



ICAO

*International Civil Aviation Organization*

The Eighth Meeting of the Asia/Pacific Wildlife Hazard Management Working Group (AP-WHM/WG/8)

*Bangkok, Thailand, 25 to 28 May 2026***Agenda Item 3: Global, Regional and National Guidance/Best Practices on Wildlife Hazard Management****THREATS POSED BY WILD ANIMALS AT ISLAMABAD INTERNATIONAL AIRPORT**

(Presented by PAKISTAN AIRPORTS AUTHORITY)

**SUMMARY**

This paper presents the hazards caused by wild animals at Islamabad International Airport (IIAP), as well as the mitigating actions taken by IIAP to address this issue. Additionally, the paper seeks to explore best practices implemented by other States in the Asia-Pacific Region on this matter.

**1. INTRODUCTION**

1.1 The presence of wildlife at and in the vicinity of airports continues to present a significant operational and safety challenge for aviation authorities and airport operators worldwide. Wildlife incursions have the potential to affect the safety and regularity of aircraft operations, particularly during critical phases of flight. In recognition of this global concern, the International Civil Aviation Organization (ICAO) has developed extensive Standards and Recommended Practices (SARPs), as well as guidance material for States aimed at the continuous assessment of wildlife hazards and the implementation of effective mitigation measures.

1.2 Wildlife hazard management requires a comprehensive and coordinated approach involving continuous monitoring, habitat management, risk assessment, reporting mechanisms, stakeholder coordination and the application of both active and passive control measures. States and airport operators employ a combination of mitigation strategies tailored to local environmental conditions and operational requirements in order to minimize wildlife-related risks while ensuring safe and efficient aircraft operations.

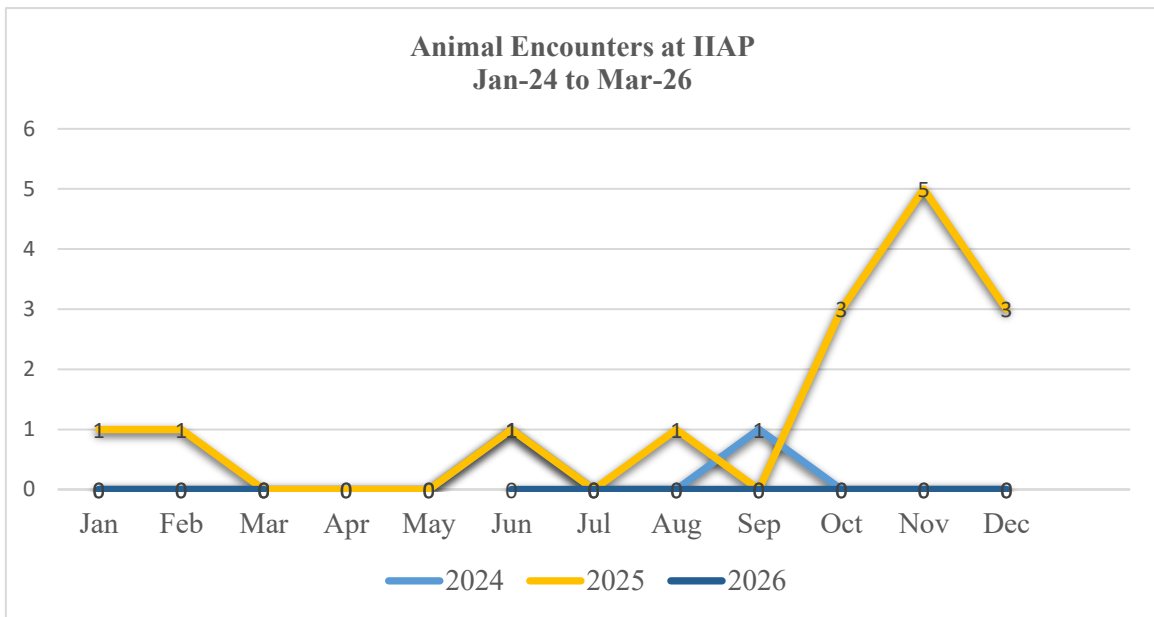
**2. DISCUSSION****Animal Hazard at Islamabad International Airport (IIAP)**

2.1 Islamabad International Airport (IIAP), inaugurated in 2018, was constructed on previously uninhabited land characterized by uneven terrain, dense vegetation and natural wildlife habitat. Despite subsequent development, the airport surrounding areas retain significant ecological features, including dense vegetation, a dam in close proximity and multiple water bodies within and outside the airport premises. These environmental conditions provide a conducive habitat for various wildlife species, particularly wild boars and other mammals, thereby increasing the potential for wildlife activity in and around the airport.

2.2 In recent years, the continued presence of wildlife within the vicinity of the aerodrome has emerged as a significant operational and flight safety concern. Multiple incidents involving animal sightings on or near the maneuvering area have resulted in flight crew alerts, go-arounds and operational disruptions, while a number of animal strike occurrences have also been reported. The recurring movement of wild boars and other mammals within the airport environment highlights the persistent wildlife hazard risk at Islamabad International Airport and underscores the need for comprehensive mitigation measures, coordinated wildlife management efforts and sustained monitoring to ensure safe aircraft operations.

2.3 The data of animal encounters at Islamabad International Airport from January 2024 to March 2026 is as follows:

Year	Jan	Feb	Mar	Apr	May	Jun	Jul	Aug	Sep	Oct	Nov	Dec	Total
2024	0	0	0	0	0	1	0	0	1	0	0	0	2
2025	1	1	0	0	0	1	0	1	0	3	5	3	9
2026	0	0	0	-	-	-	-	-	-	-	-	-	0



2.4 In August 2025, IIAP installed thermal cameras covering the maneuvering area to enhance monitoring of wildlife activity, particularly during night-time operations and periods of low visibility. Following the installation, airport management observed that the wildlife issue at IIAP Islamabad was more significant than initially assessed, with multiple animal sightings recorded through the camera feed in the subsequent months. Although timely detection and rapid response was able to prevent wildlife strikes and other adverse occurrences, the observations further highlighted the urgent need for comprehensive and sustained wildlife hazard mitigation measures at the airport.

Mitigation Measures

2.5 **Improved Detection:** Thermal imaging cameras are being utilized for monitoring wildlife activity during night hours and in low visibility conditions. The camera feeds are continuously monitored, and upon detection of wildlife movement, the wildlife control team is immediately deployed to remove the hazard from the operational area.

2.6 **Additional patrolling and surveillance:** Enhanced patrolling of the airport and surveillance of drainage channels, water bodies and undeveloped land surrounding the airport is being conducted to minimize wildlife sheltering and breeding opportunities. Additional bird / wildlife controllers have also been deployed for the purpose.

2.7 **Wildlife Survey:** Wildlife Department of Islamabad was engaged for a comprehensive survey of the airport and its surroundings.

2.8 **Installation of an Additional Fence:** Work is in progress for the installation of an additional fence with concertina wire (OLS compliant) for added protection to the maneuvering area.

2.9 **Data Analysis:** Wildlife sighting and strike data are being continuously analyzed to identify high-risk areas, seasonal trends, and operational patterns for proactive mitigation planning.

2.10 **Active Wildlife Control:** Additional wildlife deterrent equipment, including sirens and pyrotechnics, are being utilized to disperse animals from operational areas.

2.11 **Trapping and relocating animals:** Local communities and wildlife experts are being engaged alongside the airport wildlife control team for the safe capture and relocation of wild animals from airport operational areas. Several campaigns have been carried out from time to time over the past year.

2.12 **Fence Monitoring:** Increased frequency of cross-functional inspections of the aerodrome perimeter fence to identify and rectify any breaches or vulnerable areas facilitating animal entry.

2.13 **Local Authorities Support:** Coordination with environmental and municipal authorities is being pursued to ensure long-term wildlife management in areas surrounding the airport.

2.14 **Capacity Building:** Awareness sessions and training programmes are being conducted for operational personnel to enhance reporting and response procedures related to wildlife activity.

### 3. ACTION BY THE MEETING

3.1 The meeting is invited to:

- a) note the information contained in this paper;
- b) share similar experiences with animal hazard at their respective airports; and
- c) suggest measures to address the wildlife hazard at Islamabad International Airport.

-----

A black and white dog is running across a grassy field. In the background, there are several white birds, possibly egrets or herons, and a large airplane is visible on the tarmac. The scene is set at an airport.

**Threats Posed By  
Wild Animals At  
Islamabad  
International  
Airport**

# Introduction

- Wildlife presence at and around airports is a major aviation safety and operational challenge
- Wildlife incursions can impact the **safety and regularity of aircraft operations**
- Risks are particularly critical during important flight phases (takeoff, landing, taxiing)
- The **International Civil Aviation Organization (ICAO)** provides:
  - Standards and Recommended Practices (SARPs)
  - Guidance material for wildlife hazard assessment and mitigation
- Effective wildlife hazard management requires:
  - Continuous monitoring
  - Habitat management
  - Risk assessment
  - Reporting systems
  - Stakeholder coordination
  - Active and passive wildlife control measures
- Airport operators and States adopt mitigation strategies based on:
  - Local environmental conditions
  - Operational requirements
- Objective: **Minimize wildlife risks while ensuring safe and efficient aircraft operations**



# Animal Hazard at IIAP



**Islamabad International Airport was inaugurated in 2018**

**Airport constructed on previously uninhabited land with:**

Uneven terrain  
Dense vegetation  
Natural wildlife habitat

**Surrounding environment includes:**

Dense vegetation  
Nearby dam  
Multiple water bodies within and outside airport premises

**Environmental conditions support wildlife presence, especially:**

Wild boars  
Other mammals

**Wildlife activity around the airport increases operational and safety risks**

# Operational Concerns



Frequent wildlife presence near the aerodrome poses a flight safety challenge



Animal sightings near maneuvering areas have resulted in:

Flight crew alerts

Go-arounds

Operational disruptions



Multiple animal strike incidents have also been reported



Recurring movement of wild boars and mammals indicates a persistent wildlife hazard risk



Need for:

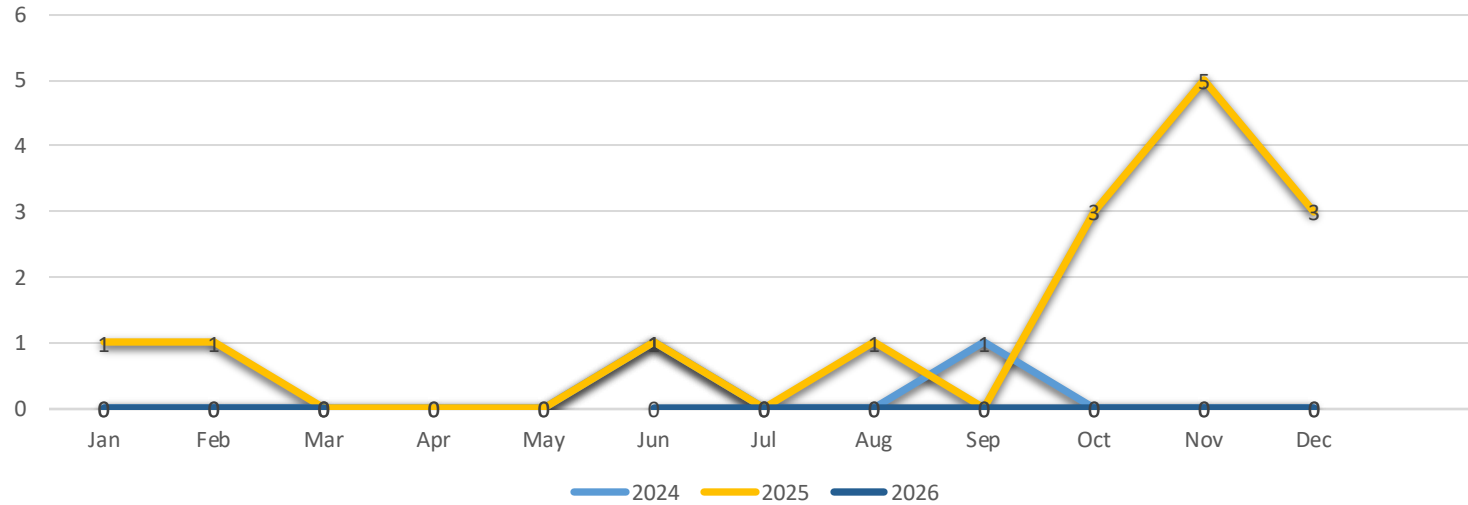
Comprehensive mitigation measures

Coordinated wildlife management

Continuous monitoring

Year	Jan	Feb	Mar	Apr	May	Jun	Jul	Aug	Sep	Oct	Nov	Dec	Total
2024	0	0	0	0	0	1	0	0	1	0	0	0	2
2025	1	1	0	0	0	1	0	1	0	3	5	3	9
2026	0	0	0	-	-	-	-	-	-	-	-	-	0

Animal Encounters at IIAP  
Jan-24 to Mar-26



# Animal Encounter Data at IIAP (Jan 2024 – Mar 2026)

# Thermal Camera Installation and Findings



In **August 2025**, IIAP installed thermal cameras covering maneuvering areas



Purpose of installation:

- Improve wildlife monitoring
- Enhance night-time surveillance
- Increase visibility during low-visibility conditions



Camera observations indicated wildlife activity was **more extensive than initially assessed**



Multiple animal sightings recorded after installation



Early detection and rapid response helped:

- Prevent wildlife strikes
- Avoid operational disruptions



Findings reinforced the need for:

- Comprehensive wildlife hazard mitigation
- Sustained monitoring systems
- Long-term wildlife management measures at IIAP

# Mitigation Measures

1

## Improved Detection

- Thermal imaging cameras used for wildlife monitoring during night and low visibility conditions
- Wildlife control teams deployed immediately upon wildlife detection

2

## Additional Patrolling and Surveillance

- Enhanced patrolling around airport operational and surrounding areas
- Additional wildlife/bird controllers deployed to strengthen monitoring

3

## Wildlife Survey

- Comprehensive wildlife survey conducted with support of wildlife authorities
- Assessment focused on airport premises and surrounding areas

4

## Installation of Additional Fence

- Additional OLS-compliant fence with concertina wire under installation
- Intended to strengthen protection of maneuvering areas

5

## Data Analysis

- Wildlife sighting and strike data continuously monitored and analyzed
- High-risk areas and operational trends identified for proactive planning

# Mitigation Measures

6

## Active Wildlife Control

- Additional deterrent equipment such as sirens and pyrotechnics utilized
- Measures aimed at dispersing wildlife from operational areas

7

## Trapping and Relocating Animals

- Collaboration with local communities and wildlife experts for animal relocation
- Multiple wildlife capture and relocation campaigns conducted

8

## Fence Monitoring

- Increased inspections of aerodrome perimeter fencing conducted
- Breaches and vulnerable entry points identified and rectified

9

## Local Authorities Support

- Coordination maintained with environmental and municipal authorities
- Long-term wildlife management around airport surroundings pursued

10

## Capacity Building

- Awareness sessions conducted for airport operational personnel
- Training provided to improve wildlife reporting and response procedures