

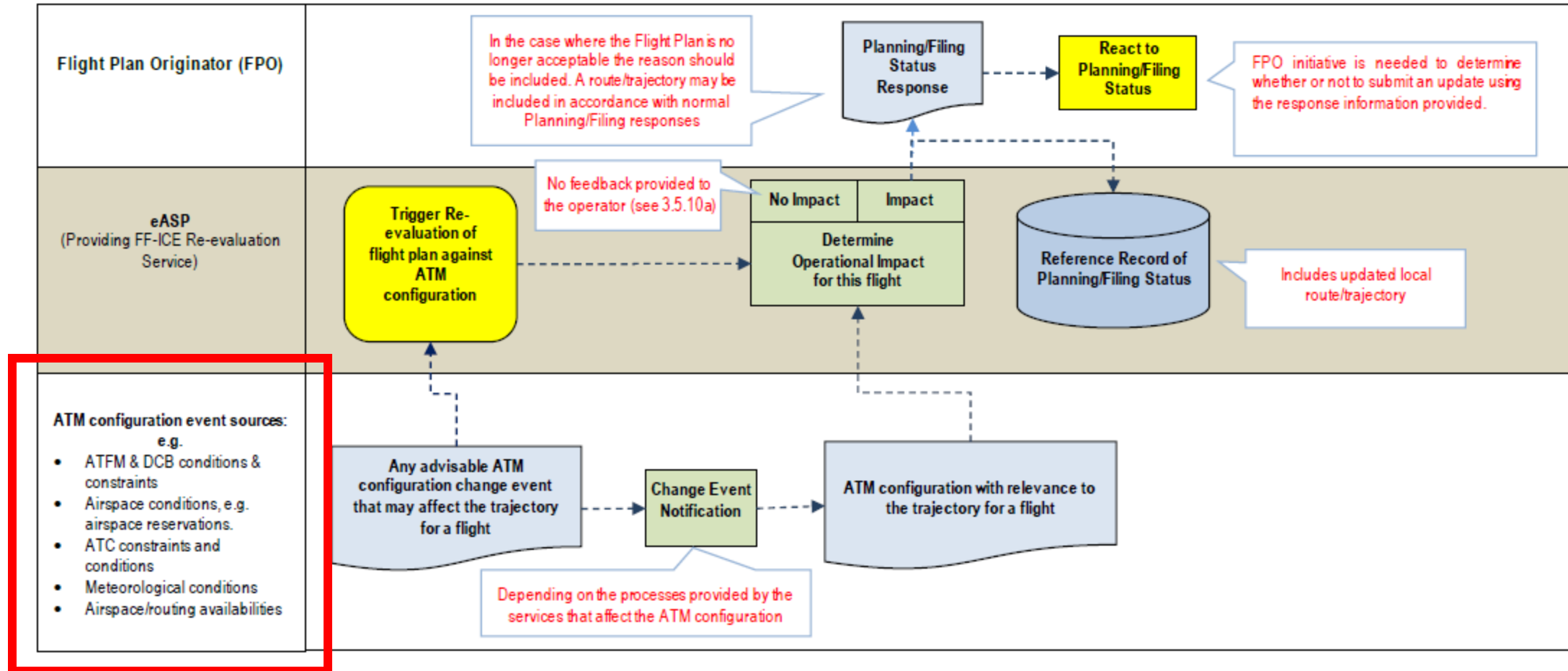
Re-evaluation Process

Re-evaluation Process – Background

- “Re-evaluation is an optional process that an eASP may perform to determine whether or not a flight plan remains in compliance with published restrictions or ATM measures that may have been applied or modified since the flight plan was last evaluated.”

If provided, the process should be applied within both the Planning and Filing services. The re-evaluation process, if provided, is advisory and does not relieve the operator of its responsibility to ensure the proposed flight remains in compliance with published restrictions and procedures.”

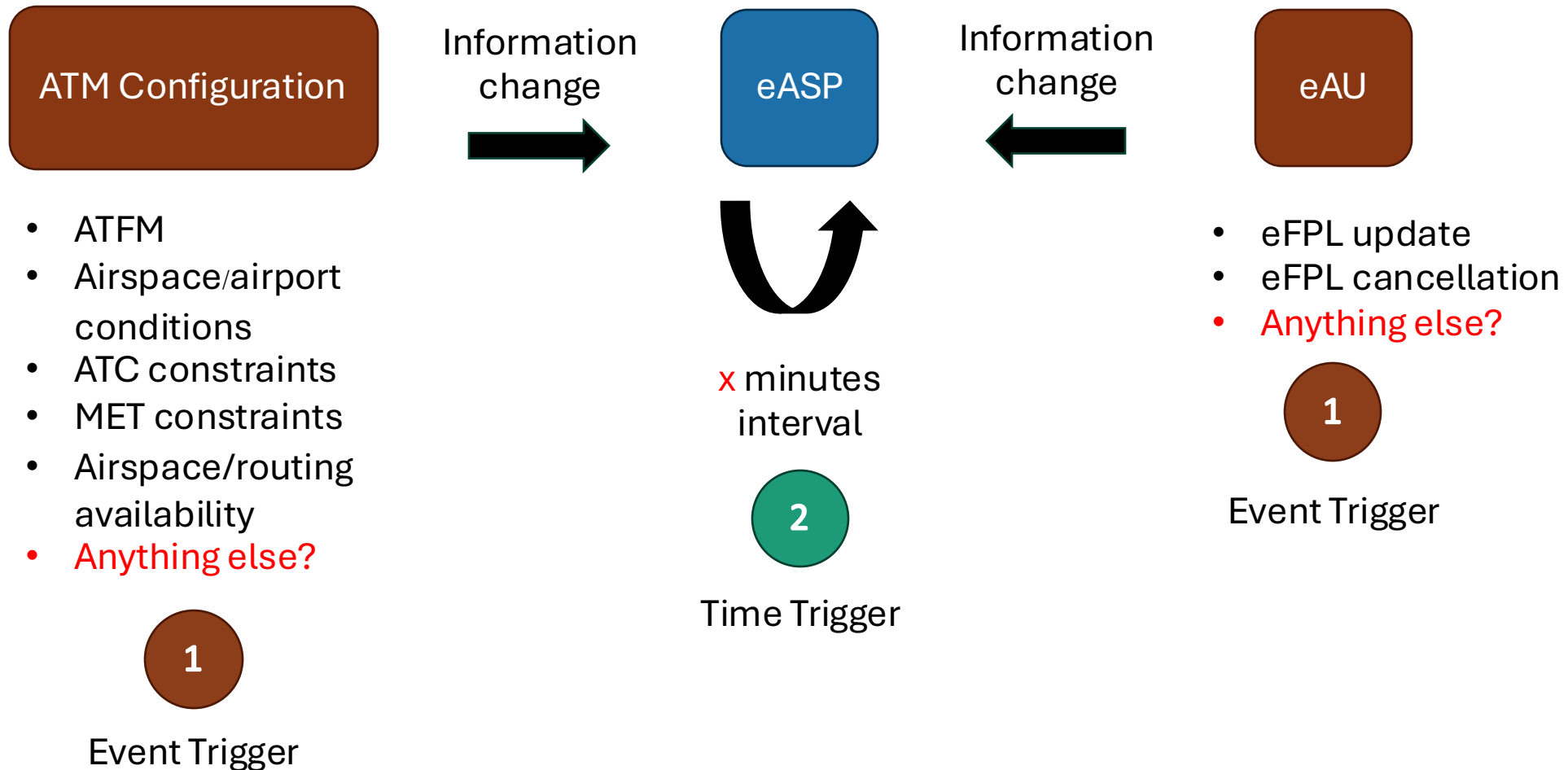
Re-evaluation Process – Background



Considerations

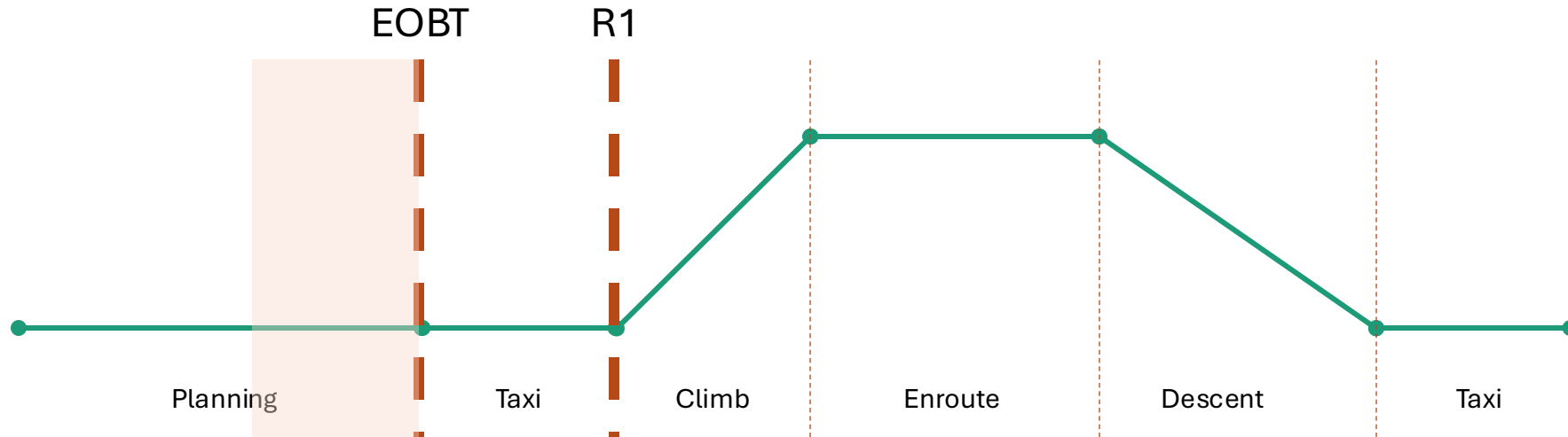
- Triggers
- Cut-off time
- eASP response time

Triggers



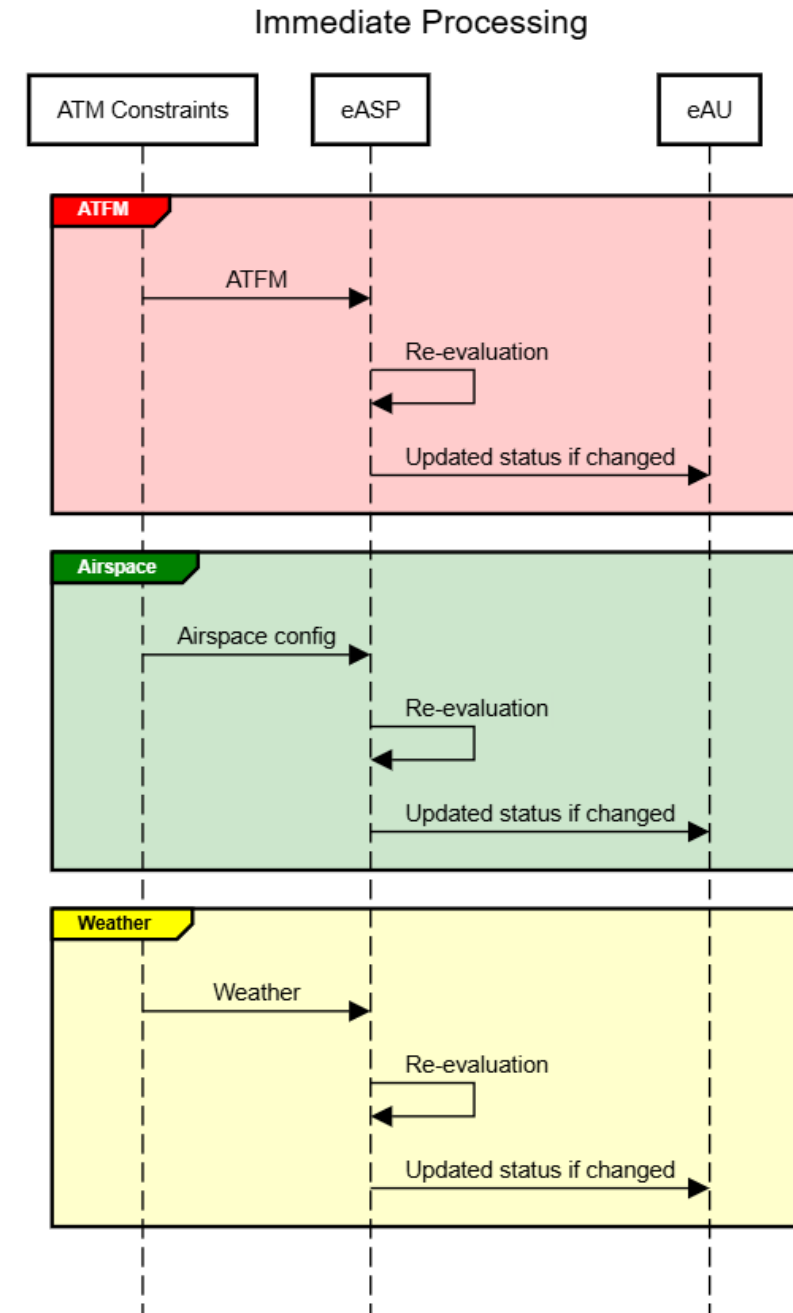
Cut-off Time

- Re-evaluation affects every flights except
 - Already departed
 - Already pushed back
 - Going to be pushed back, EOBT – x minute(s), e.g. EOBT – 60 minutes?



eASP Response Time

- eASP do re-evaluation when the trigger occurs



Re-evaluation: Discussion

- Which trigger mechanism are you likely to use?

