



ICAO



SAFE SKIES.
**SUSTAINABLE
FUTURE.**



Vaughan Hickford

Manager Enterprise Architecture and Network
Airways New Zealand

Migrating to CRV from PASNET

01

PASNet Overview

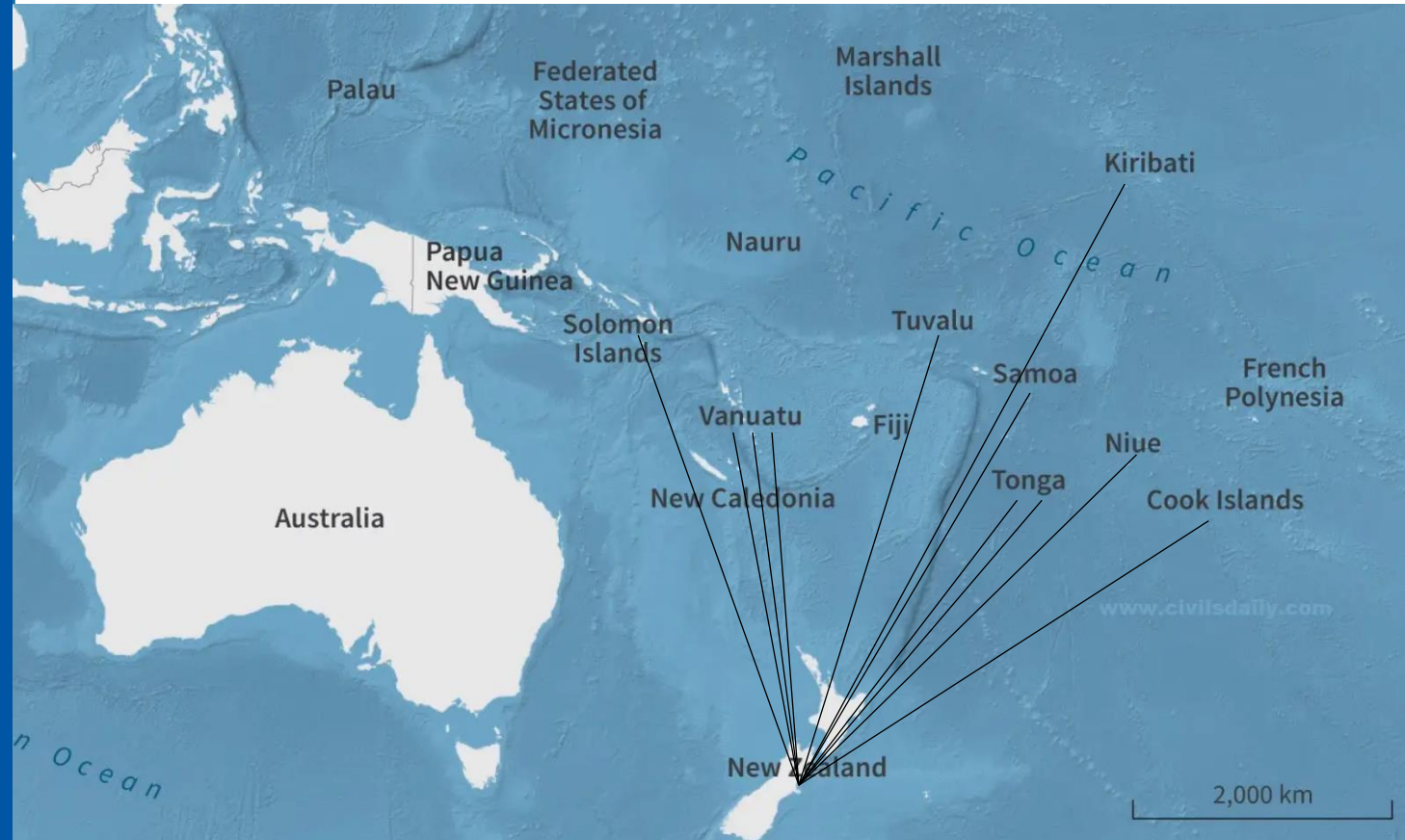
02

Migrating to CRV

03

Support

01 PASNET Overview



PASNet Overview 1/7

- ✓ PASNet was a World Bank initiative.
- ✓ Provides for VSAT connectivity with routers, switches and firewalls at each site to facilitate voice and data services.
- ✓ Each state owns the VSAT and Network equipment provided except for Fua'amotu, Tonga which is owned by Airways New Zealand.
- ✓ Airways New Zealand maintains PASNet.
- ✓ Spares are held at each location.

PASNET Overview 2/7

Delivered and operating.

Samoa – Faleolo

Kiribati - Tarawa

Cook Islands – Rarotonga.

Solomons – Honiara

Solomons - Munda

PASNet Overview 3/7

Delivered and not operating.

Tonga - Vava'u

Tonga – Tongatapu (current communications safety case issue)

Tuvalu – Funafuti

Niue – Hanan

PASNet Overview 4/7

Sites yet to be implemented

Kiribati - Kiritimati

Vanuatu – Tanna

Vanuatu – Bauerfield

Vanuatu – Santo-Pekoa

PASNet Overview 5/7

Sites without PASNet

American Samoa

Marshall Islands

Federated States of Micronesia

Nauru

Palau

Timor Leste

Wallis and Futuna

Guam

Saipan

PASNet Overview 6/7

- ✓ PASNet provides limited connectivity across the Pacific.
- ✓ Has been implemented in several phases with different equipment.
- ✓ All connections come back to the hub hosted by Airways New Zealand in Christchurch New Zealand.
- ✓ There is no connection between PASNet and CRV.
- ✓ With connectivity from the Pacific desired by other States for voice, AMHS User Terminals, ADS-B and soon SWIM and CADAS, PASNet is no longer fit for purpose.
- ✓ Need to migrate from PASNET to CRV

PASNet Overview 7/7

Typical install

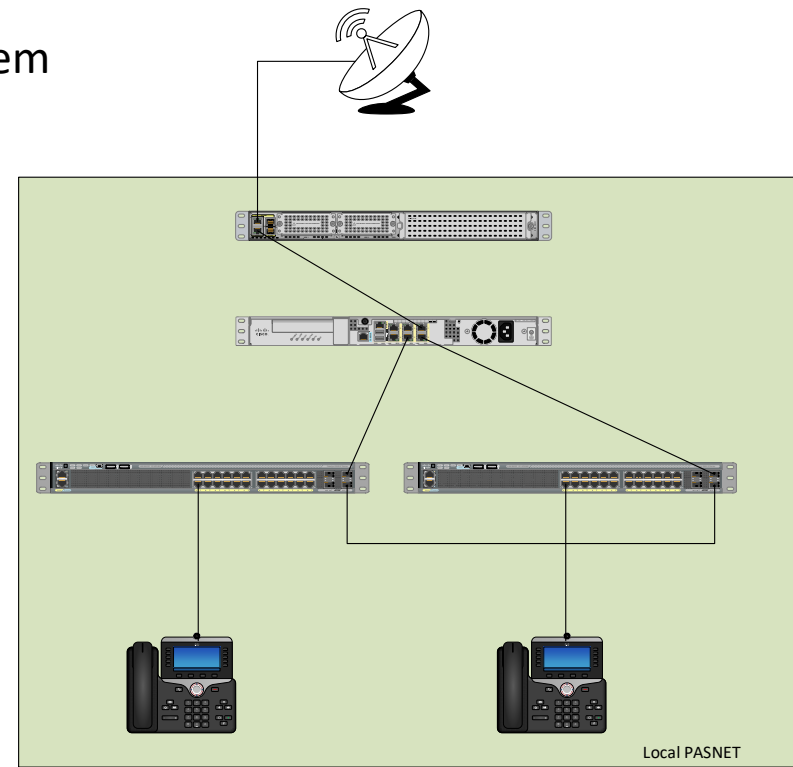
Satellite equipment – Pedestal/Dish/BUC/Modem

Router

Firewall

Switches

IP Phones



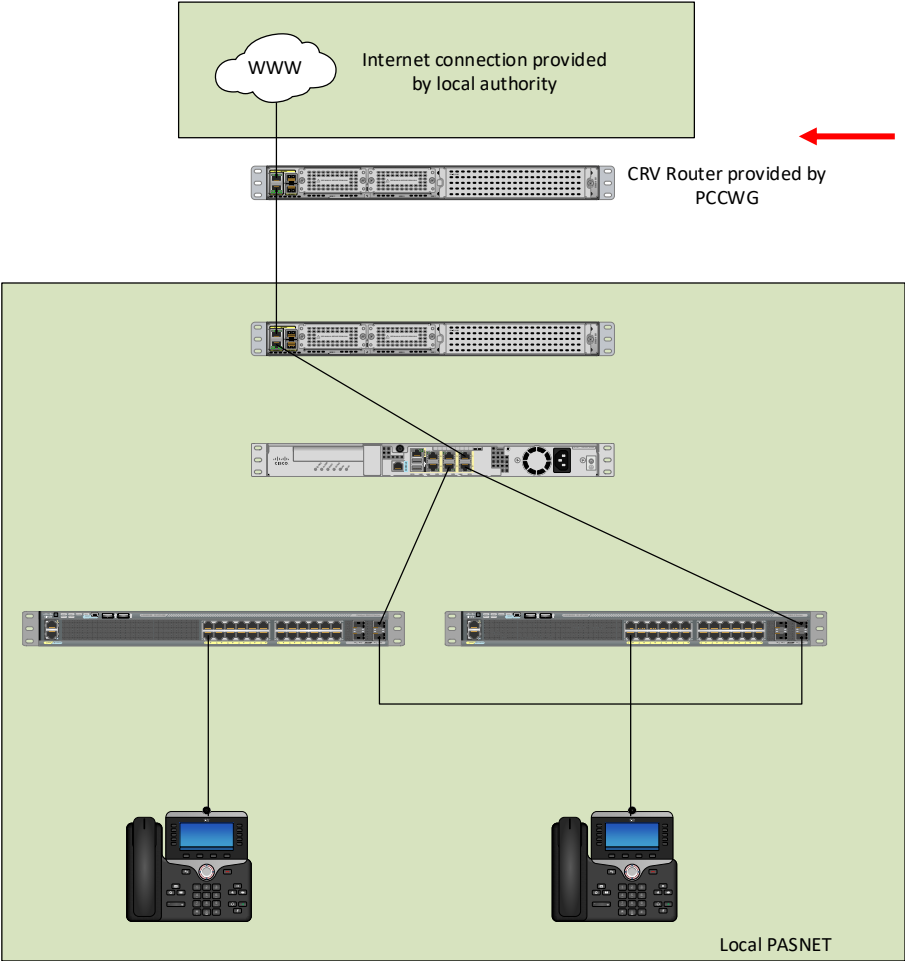
02

Migrating to CRV



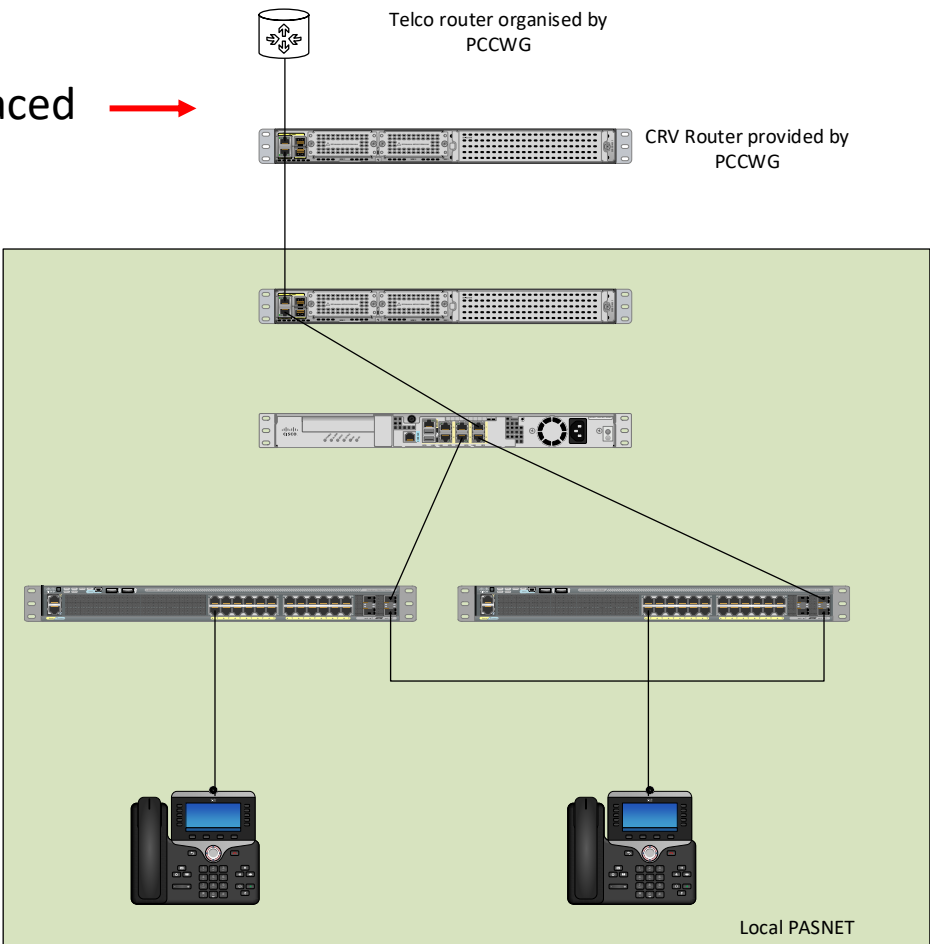
End goal

Package options



Package D Option - Internet

VSAT is replaced



Package A,B,C Option - Internet

Migrating from PASNet to CRV – 1/5

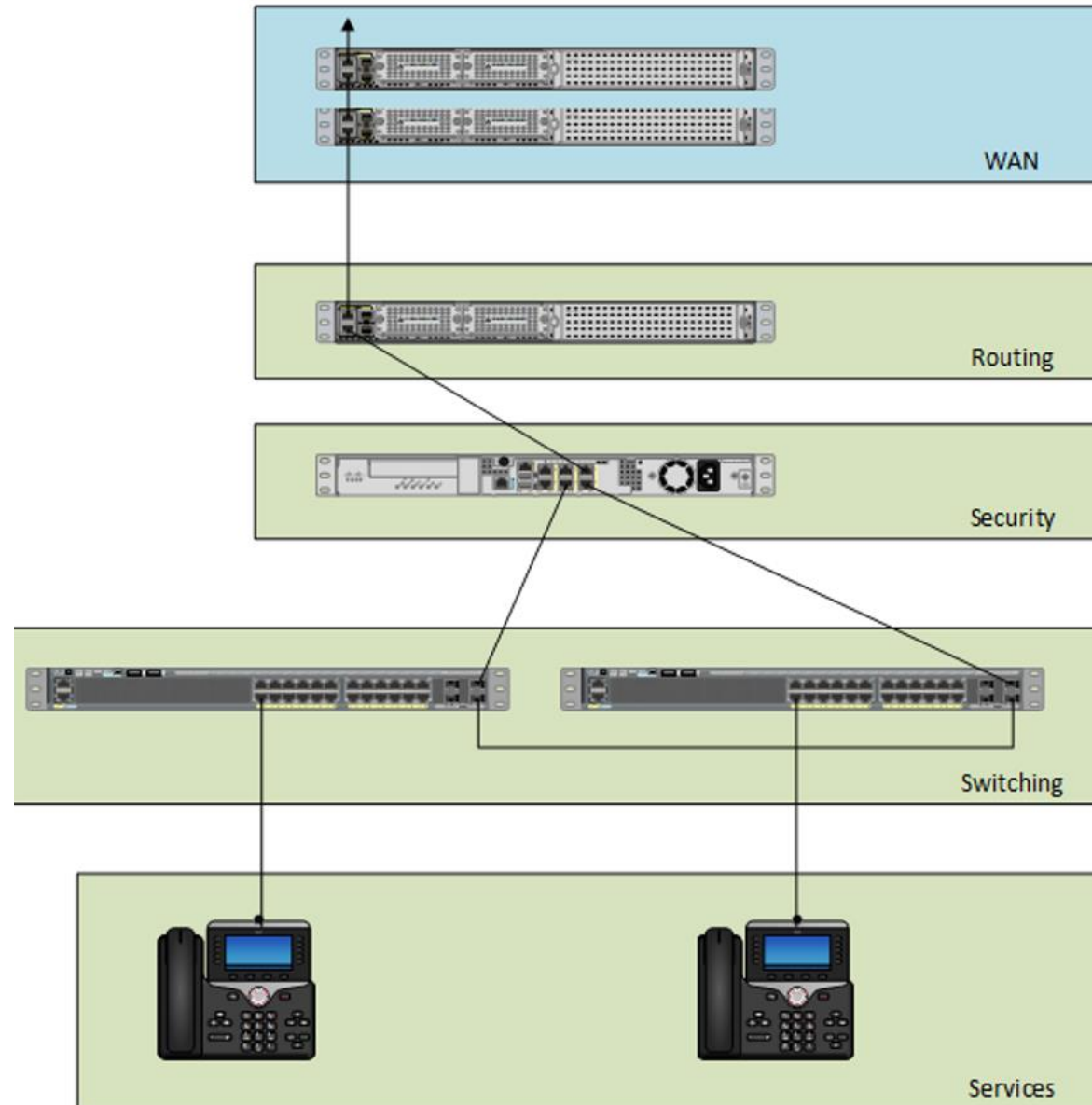
WAN is the Teclo connection as part of the last mile and the PCCWG NID

Routing is the existing PASNet Router

Security is the existing firewall.

Switching is the existing switching

Service are the existing and any new services

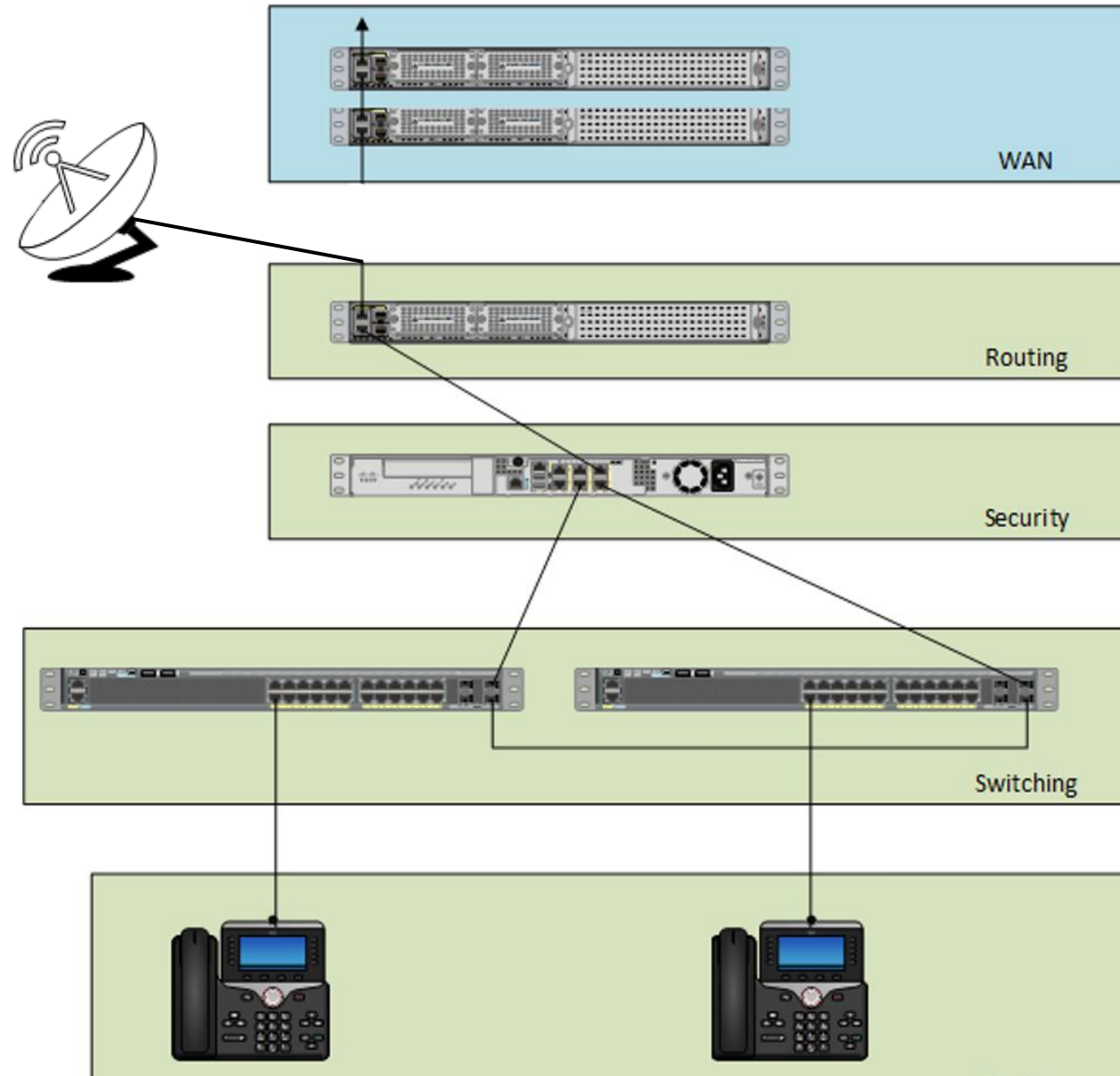


Migrating from PASNet to CRV – 2/5

15

WAN is the Teclo connection as part of the last mile and the PCCWG NID

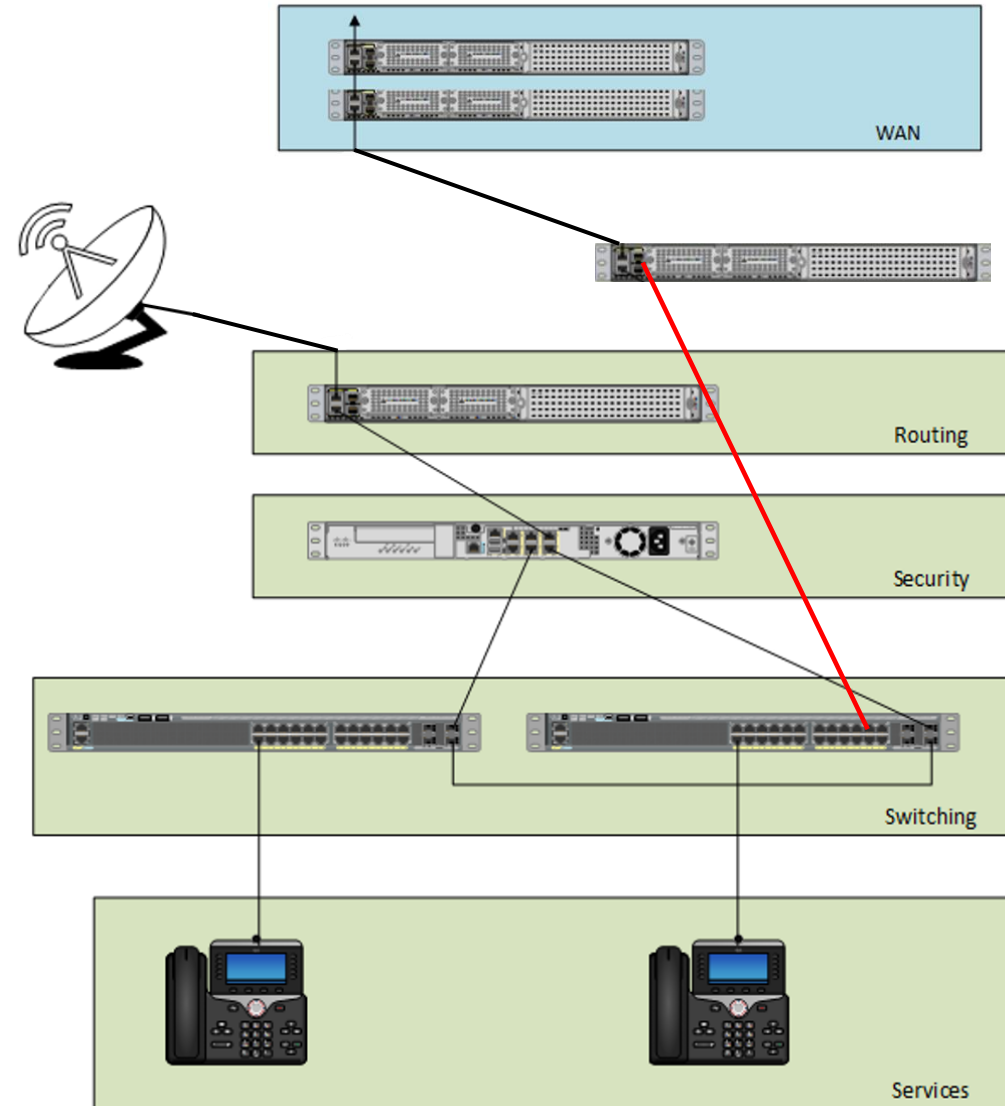
Router remains connected to the VSAT.



Migrating from PASNet to CRV – 3/5

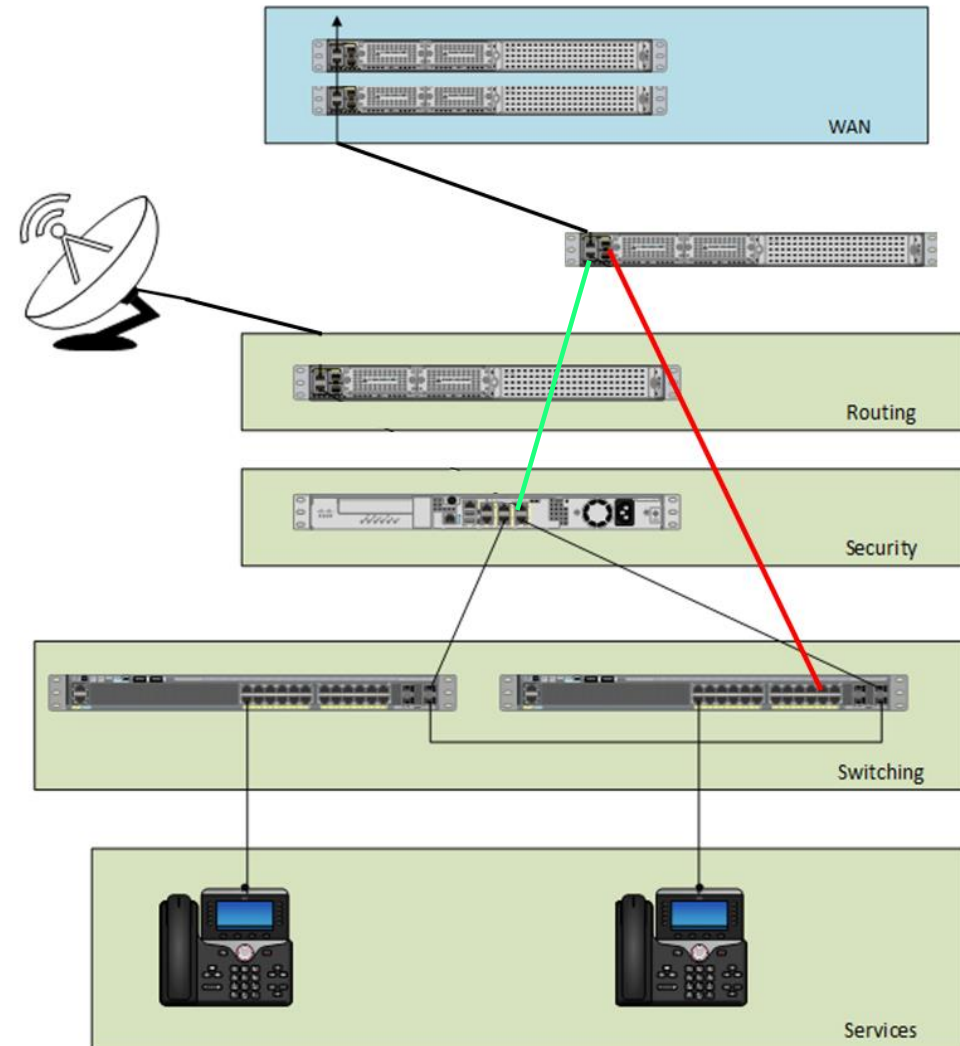
Implement a spare router to CRV and with remote access (Red line).

Routing is the existing PASNet Router



Migrating from PASNet to CRV – 4/5

Disconnect the existing PASNet Router from the firewall and connect in the spare router (Green Line)



Migrating from PASNet to CRV – 5/5

End goal achieved.

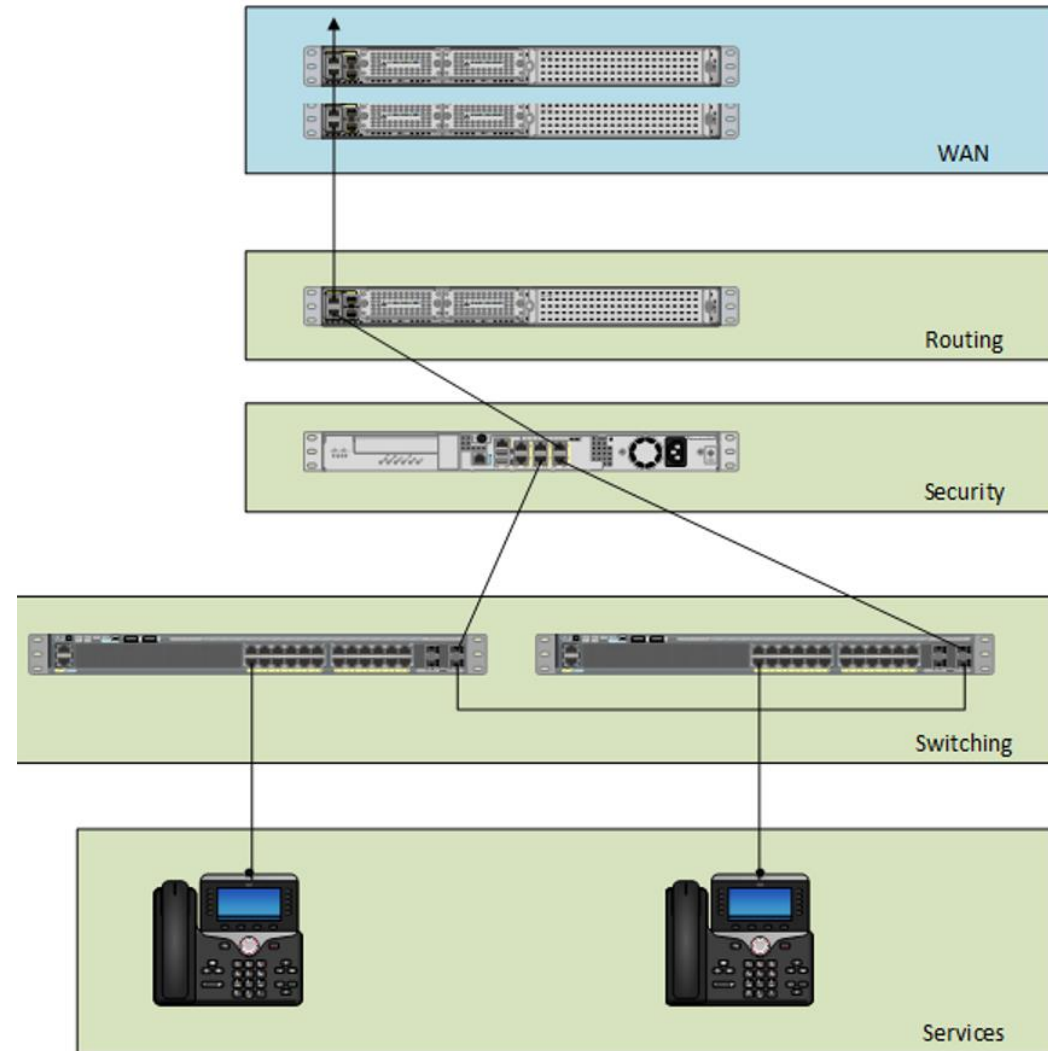
WAN is now via CRV

Routing is the existing PASNet Router

Security is the existing firewall.

Switching is the existing switching

Service are the existing and any new services



03 Support



Support

Airways Pacific Upper Airspace Services Group

- ✓ Airways International Limited (AIL) supports Niue, Tonga, Cook Islands and Samoa.
- ✓ AIL will be paying the installation costs for these sites.
- ✓ AIL will also be paying the PCCWG Monthly Recurring Costs (MRC).
- ✓ Airways Network Engineers will be supporting the migration from PASNET to CRV.

Support cont'd

Other Pacific states with PASNET

- ✓ Airways Network Engineers will look to support the migration from PASNET to CRV for those sites with PASNet already installed.
- ✓ For those sites with equipment for PASNet but have not had the equipment installed, more work is required to plan the migration.

Thank You

