

WP23 PROGRESS UPDATE ON DEVELOPMENT OF REGIONAL A-CDM IMPLEMENTATION MONITORING SCHEME

Presented by ATFM/IR/SWG

ATFM/SG/15

Development of the Regional Monitoring and Reporting Scheme

1

ATFM/SG/14

Hong Kong China (as rapporteur of ATFM/IR/SWG) reported on the development of the Regional Monitoring and Reporting Scheme for A-CDM Implementation

2

Q2 2024

Comments received on the draft monitoring and reporting scheme

3

August 2024

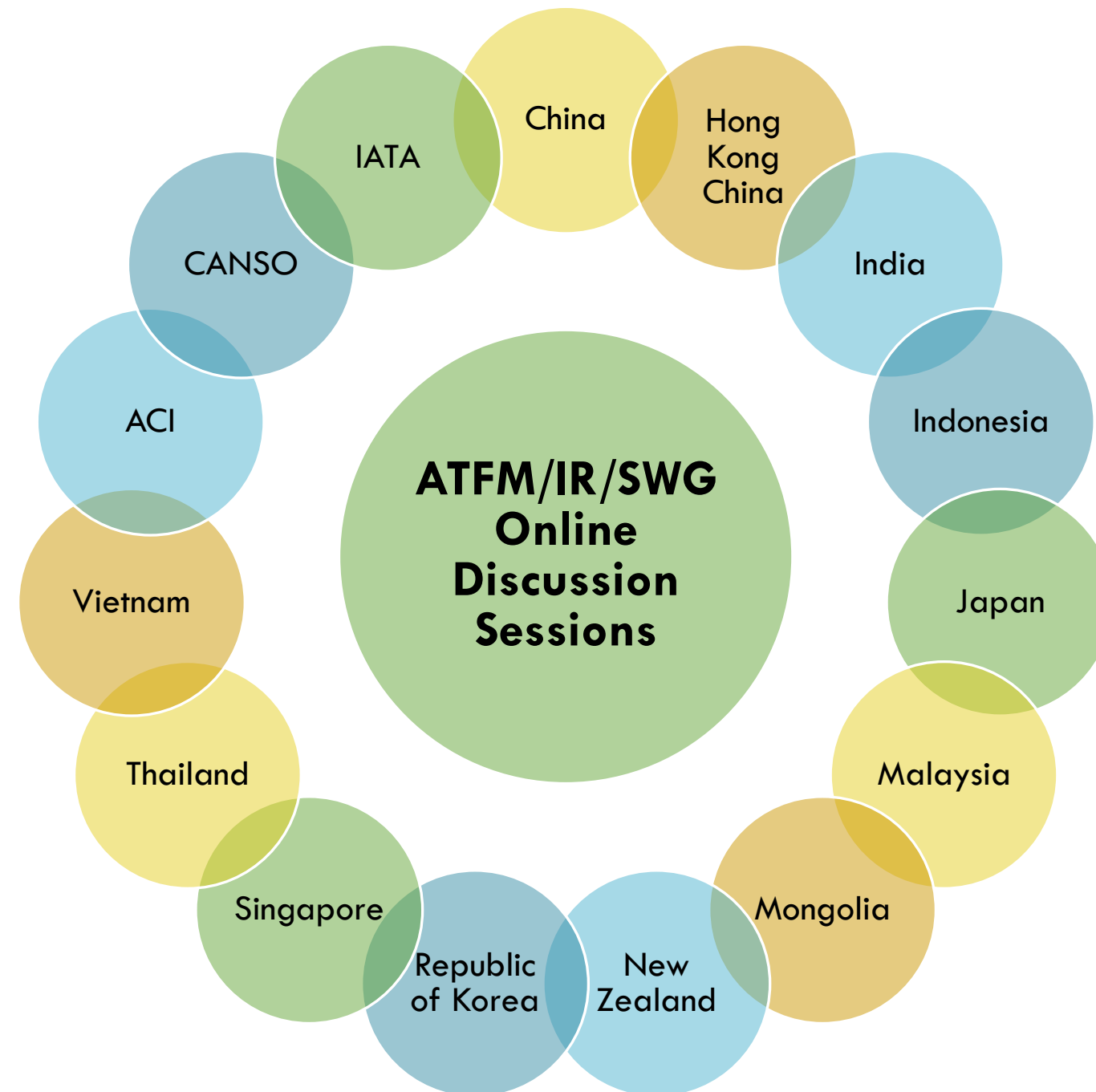
Revised draft disseminated and agreed with minor amendments in online meeting on 29 August 2024

4

ATM/SG/12

Finalised scheme reported with proposal for annual reporting date of 28 February, with 2025 as trial year

Participants of ATFM/IR/SWG Online Discussion Sessions



Trial Asia/Pacific Regional A-CDM Monitoring and Reporting Scheme (2025)

Participating States/Administrations and Airports

China	ZBAA ZBHH ZBSJ ZBTJ ZBYN ZGGG ZGHA ZGNN ZGSD ZGSZ ZHCC ZHHH ZJHK ZJSY ZLIC ZLLL ZLXY ZPPP ZSAD ZSAM ZSCN ZSFZ ZSHC ZSJJ ZSNB ZSNJ ZSOF ZSPD ZSQD ZSSS ZSWZ ZSYT ZUCK ZUGY ZUTF ZUUU ZWWW ZYCC ZYHB ZYTL ZYTX
Hong Kong China	VHHH
Fiji	NFFN NFNA
India	VAAH VABB VECC VEGT VIJP VOBL VOHS VOMM VOTV
Japan	RJAA RJCC RJTT
Malaysia	WMKK
New Zealand	NZAA NZCH NZQN NZWN
Philippines	RPLL
Singapore	WSSS
Sri Lanka	VCBI
Thailand	VTBD VTBS VTSB VTSG

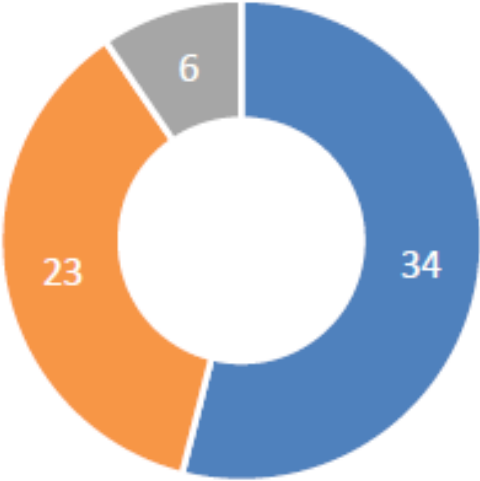
11 States or
Administrations
reported

Reporting Elements

Elements	
Traffic Density	<div>Refer to ICAO Annex 14 Vol. 1<ul style="list-style-type: none">› Light (less than 20 per hour)› Medium (20 to less than 35 per hour)› Heavy (more than 35 per hour)</div>
International/ Domestic	<div>Refer to ICAO APAC ANS Seamless Plan Ver. 3.0<ul style="list-style-type: none">› Reporting is initially required for international airports› Domestic airports are encouraged to report</div>

Traffic Density (International Airport)


■ Heavy ■ Medium ■ Light



Category	Percentage
Heavy	34
Medium	23
Light	6

Category

■ International ■ Domestic



Category	Percentage
International	68
Domestic	32

Reporting Elements

Planning for A-CDM

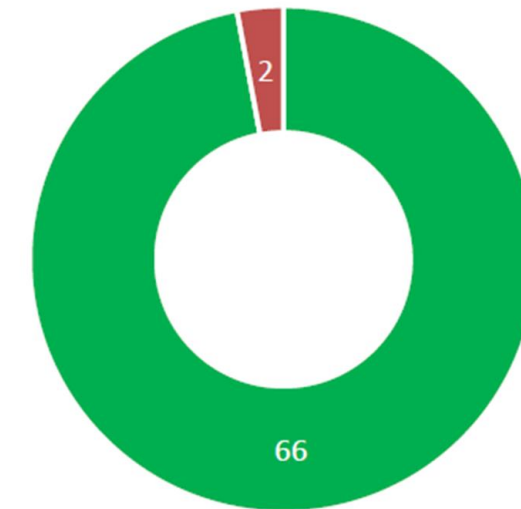
Elements

Refer to ICAO A-CDM Implementation Guidance

- › Initiation phase
- › Implementation phase
- › Operation and Monitoring Phase

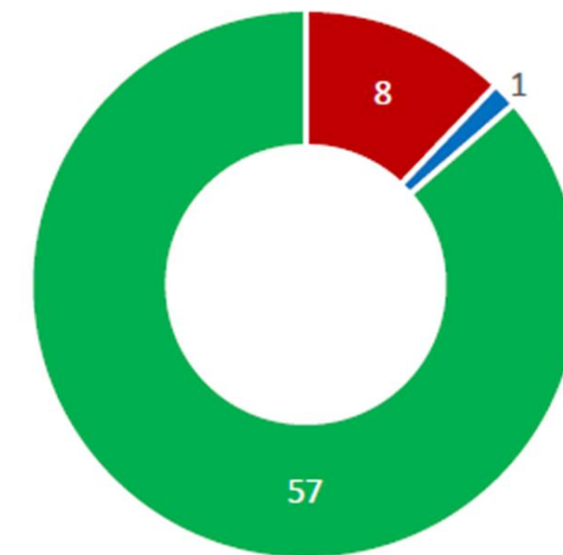
A-CDM Planned/ Implemented? (International Airport)

■ Implemented ■ Plan to Implement



Phases of Planning for A-CDM Implementation

■ Initiation Phase ■ Implementation Phase ■ Operation and Monitoring Phase



Reporting Elements

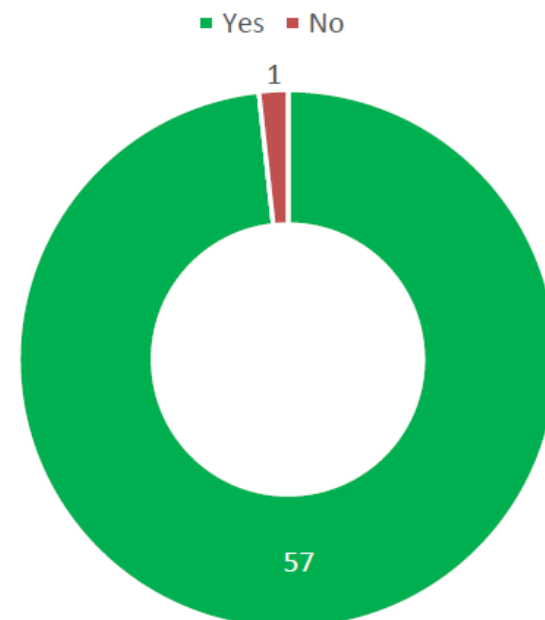
A-CDM Implementation

Elements

Refer to ICAO APAC A-CDM Implementation Plan

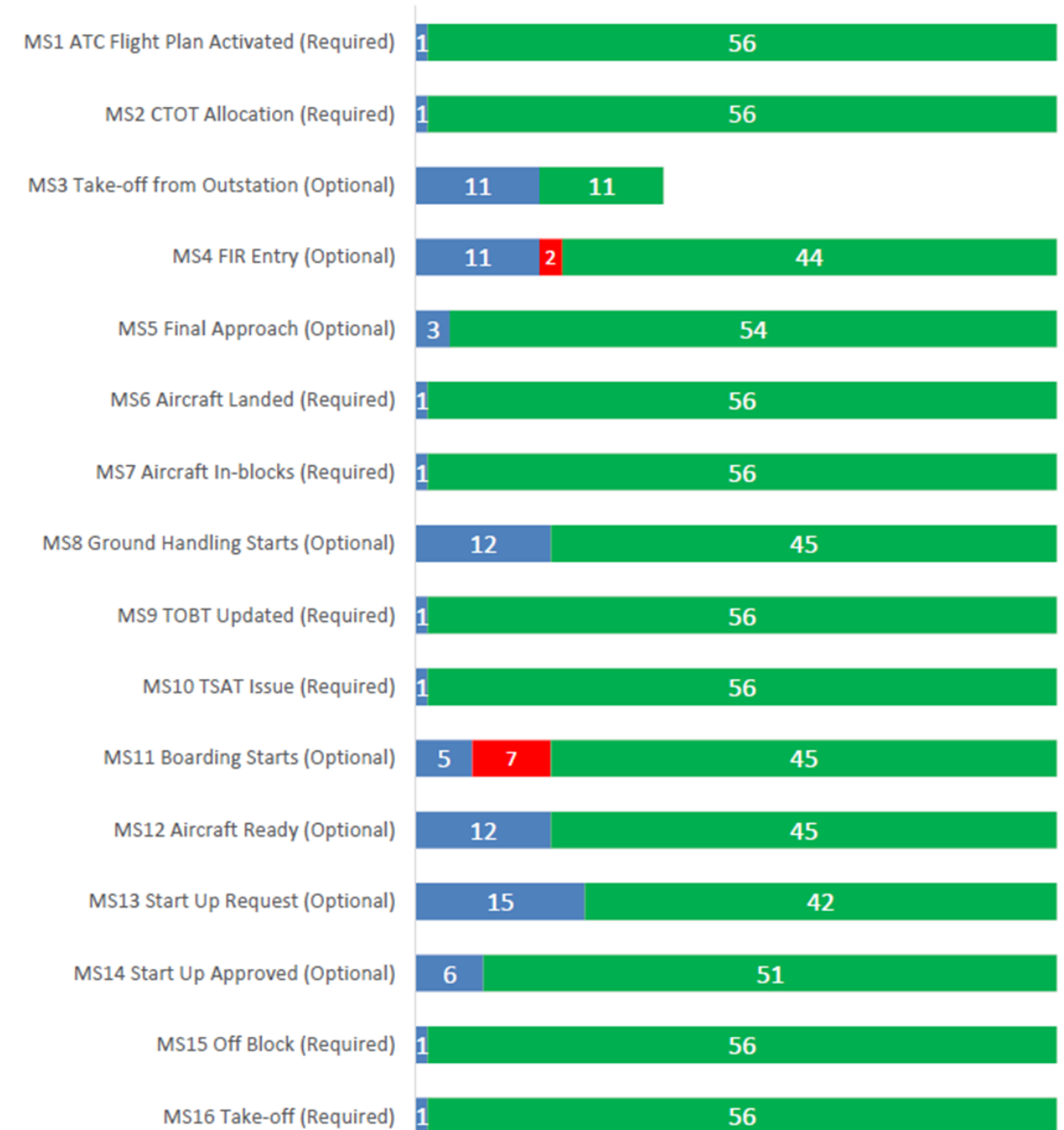
- › Information Sharing platform
- › 16 milestones in the A-CDM process (Required/Optional), with purpose, data elements, A-CDM actions, examples etc. clearly stated for each milestone

Is an A-CDM information sharing platform available?



Implementation of the 16 A-CDM Milestones

■ Not Applicable ■ Partly ■ Completed





The meeting is invited to

- a) note the information contained in this paper; and
- b) provide comment on the trial arrangement on the monitoring and reporting scheme,
- c) support the Regional A-CDM Monitoring and Reporting Scheme to be carried out annually alongside the Regional ATFM Plan Monitoring and Reporting; and
- d) discuss any relevant matters as appropriate.

Draft Conclusion/Decision ATFM/SG/15-X: Normalization of Asia/Pacific Regional A-CDM Monitoring and Reporting Scheme

What: The trial Asia/Pacific Regional A-CDM Monitoring and Reporting Scheme to be normalized as part of the annual reporting framework.

Expected impact:

- ☐ Political / Global
- ☐ Inter-regional
- ☐ Economic
- ☐ Environmental
- ☒ Ops/Technical

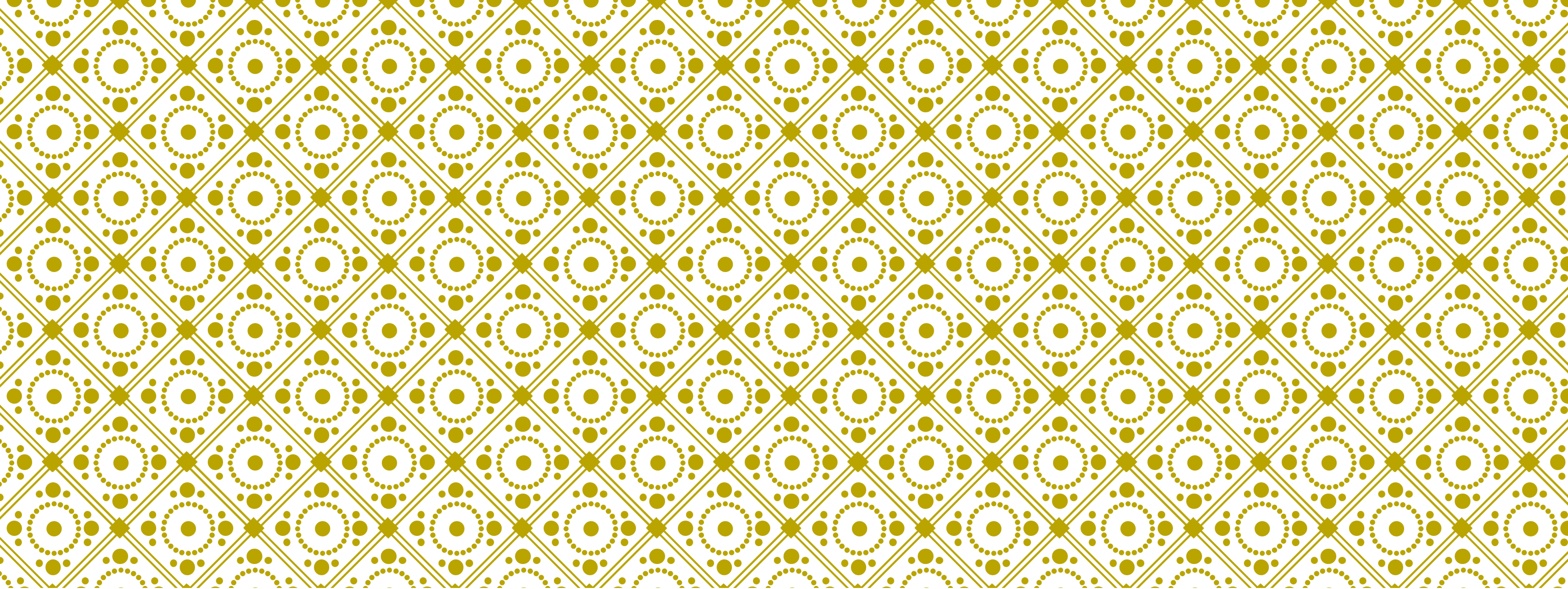
Why: To gather A-CDM implementation and operational status within the Asia/Pacific region for enhancement of common understanding of operational capability and enhancement to ATFM measures.

Follow-up: ☐ Required from States

When: 29-Aug-25

Status: Draft to be adopted by Subgroup

Who: ☒ Sub groups ☒ APAC States ☒ ICAO APAC RO ☐ ICAO HQ ☐ Other:



THANK YOU

Sample Reporting Form

ICAO Asia Pacific A-CDM Monitoring and Reporting Scheme

Reporting Year: 2025

Part A (Basic Information)

1. ICAO Airport Code(s): _____

(Airports within the same State/ Administration with same status could be reported in a single form)

2. Category

a. ☐ International Airport

b. ☐ Domestic Airport

3. Traffic Density (reference to ICAO Annex 14 Vol.1)

a. ☐ Light (less than 20 per hour)

b. ☐ Medium (20 – less than 35 per hour)

c. ☐ Heavy (more than 35 per hour)

4. A-CDM Planned/ Implemented?

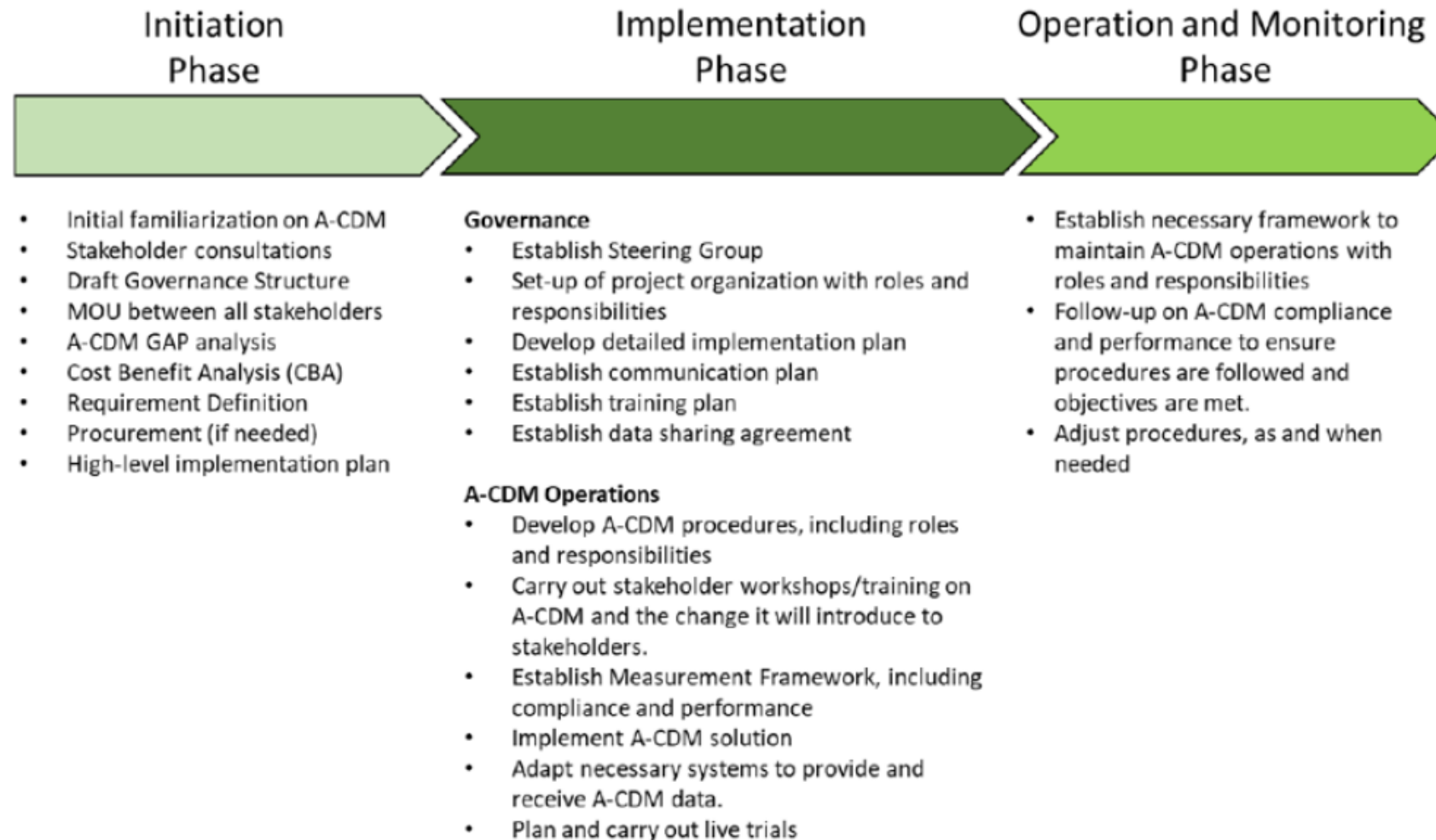
a. ☐ Yes (proceed to Part B)

b. ☐ Not Applicable (provide justification below if “International Airport” is selected for Question 2) → End of reporting
(Justification: _____)

Sample Reporting Form

Part B (Phases of Planning for A-CDM Implementation)

Select the phase according to the diagram below (extracted from ICAO A-CDM Implementation Guidance) |



5. Phases of Planning for A-CDM Implementation

- ☐ Initiation Phase → End of reporting
- ☐ Implementation Phase → Proceed to Part C
- ☐ Operation and Monitoring Phase → Proceed to Part C

Sample Reporting Form

Part C (Phases of A-CDM Implementation)

6. Is an A-CDM information sharing platform available?

- a. ☐ Yes → Proceed to Question 7
- b. ☐ No → End of reporting

7. Report the implementation status according to the 16 milestones suggested in ICAO APAC A-CDM Implementation Plan

Milestone	Required/ Optional	Implementation Status		
		Not Applicable	Partly [#]	Completed
MS1 ATC Flight Plan Activated	Required	<input type="checkbox"/> ★	<input type="checkbox"/> ★	<input type="checkbox"/>
MS2 CTOT Allocation	Required @	<input type="checkbox"/> ★	<input type="checkbox"/> ★	<input type="checkbox"/>
MS3 Take-off from Outstation	<i>Optional</i>	<input type="checkbox"/>	<input type="checkbox"/>	<input type="checkbox"/>
MS4 FIR Entry	<i>Optional</i>	<input type="checkbox"/>	<input type="checkbox"/>	<input type="checkbox"/>
MS5 Final Approach	<i>Optional</i>	<input type="checkbox"/>	<input type="checkbox"/>	<input type="checkbox"/>
MS6 Aircraft Landed	Required	<input type="checkbox"/> ★	<input type="checkbox"/> ★	<input type="checkbox"/>
MS7 Aircraft In-Blocks	Required	<input type="checkbox"/> ★	<input type="checkbox"/> ★	<input type="checkbox"/>
MS8 Ground Handling Starts	<i>Optional</i>	<input type="checkbox"/>	<input type="checkbox"/>	<input type="checkbox"/>
MS9 TOBT Updated	Required	<input type="checkbox"/> ★	<input type="checkbox"/> ★	<input type="checkbox"/>
MS10 TSAT Issue	Required	<input type="checkbox"/> ★	<input type="checkbox"/> ★	<input type="checkbox"/>
MS11 Boarding Starts	<i>Optional</i>	<input type="checkbox"/>	<input type="checkbox"/>	<input type="checkbox"/>
MS12 Aircraft Ready	<i>Optional</i>	<input type="checkbox"/>	<input type="checkbox"/>	<input type="checkbox"/>
MS13 Start Up Request	<i>Optional</i>	<input type="checkbox"/>	<input type="checkbox"/>	<input type="checkbox"/>
MS14 Start Up Approved	<i>Optional</i>	<input type="checkbox"/>	<input type="checkbox"/>	<input type="checkbox"/>
MS15 Off Block	Required	<input type="checkbox"/> ★	<input type="checkbox"/> ★	<input type="checkbox"/>
MS16 Take Off	Required	<input type="checkbox"/> ★	<input type="checkbox"/> ★	<input type="checkbox"/>

refer to "A-CDM Actions" in Table 5 of ICAO APAC A-CDM Implementation Plan (2nd Edition)

★ please provide justifications/remarks below for choosing this status

@ for fully integrated A-CDM – ATFM solution, select "Not Applicable" for a local A-CDM implementation

Justifications/Remarks:

Reporting Flow Chart

