



Volcano Hayli Gubbi Eruption on 23 November 2025 (PPT/04)

25 Nov 2025

APANPIRG/36

Hayli Gubbi

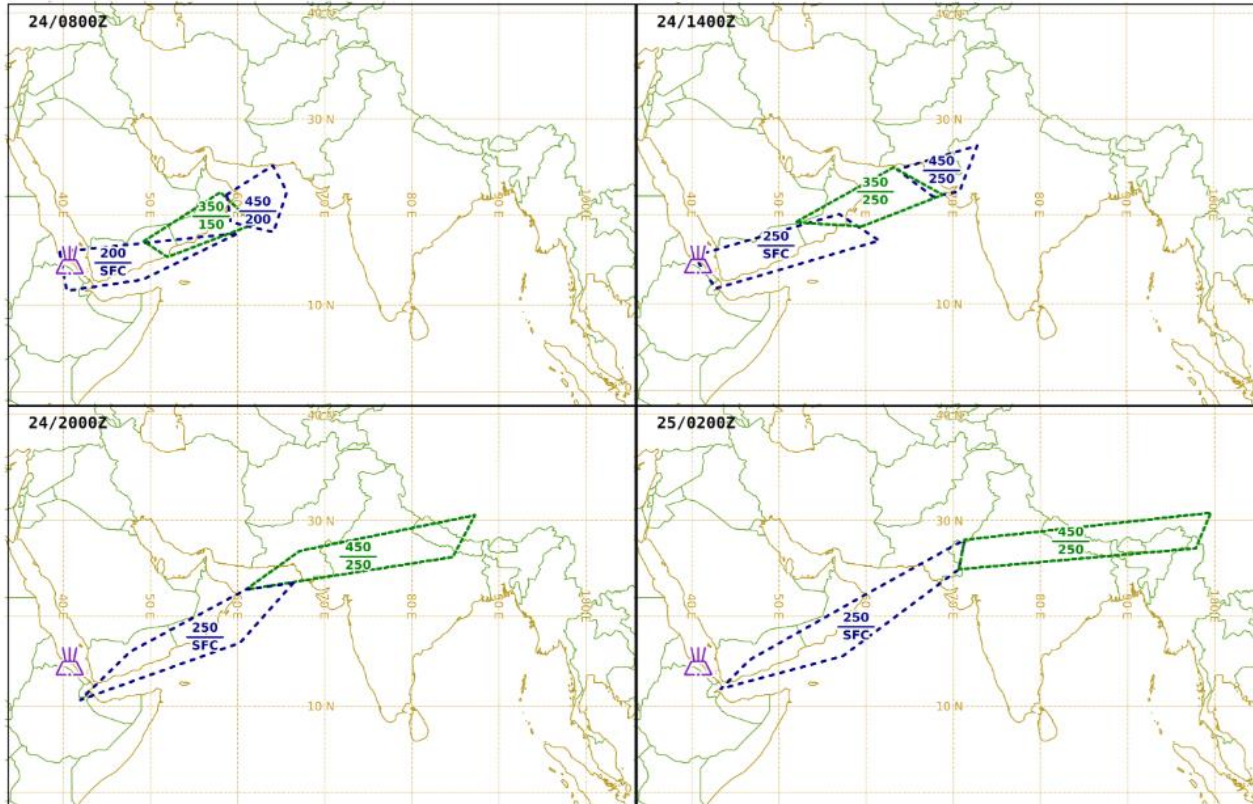
ERUPTION at 20251123/0830Z
located in the Afar Region of Ethiopia,
at approximately 13.51 N 40.72 E



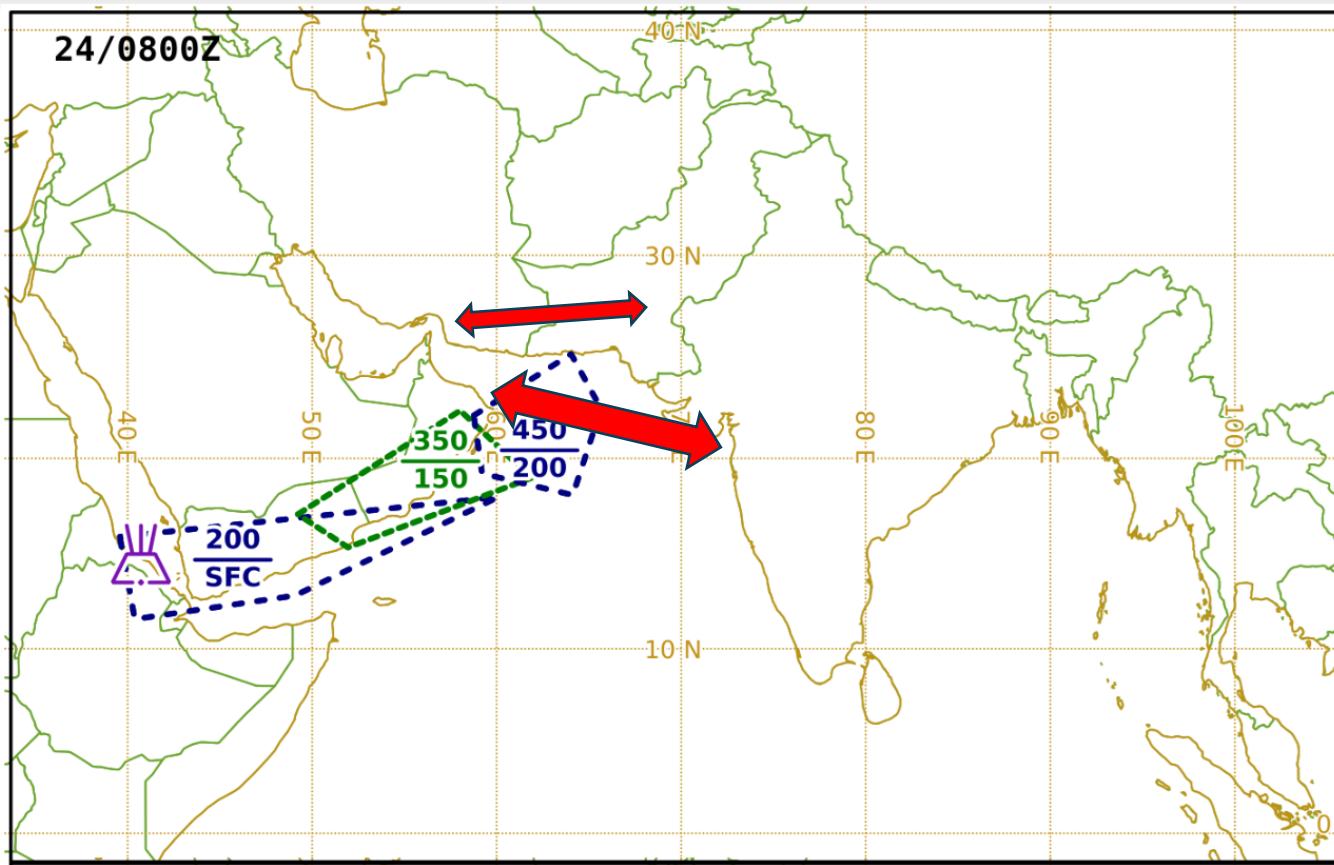
The Hayli Gubbi volcano erupted for the first time in at least 12,000 years.

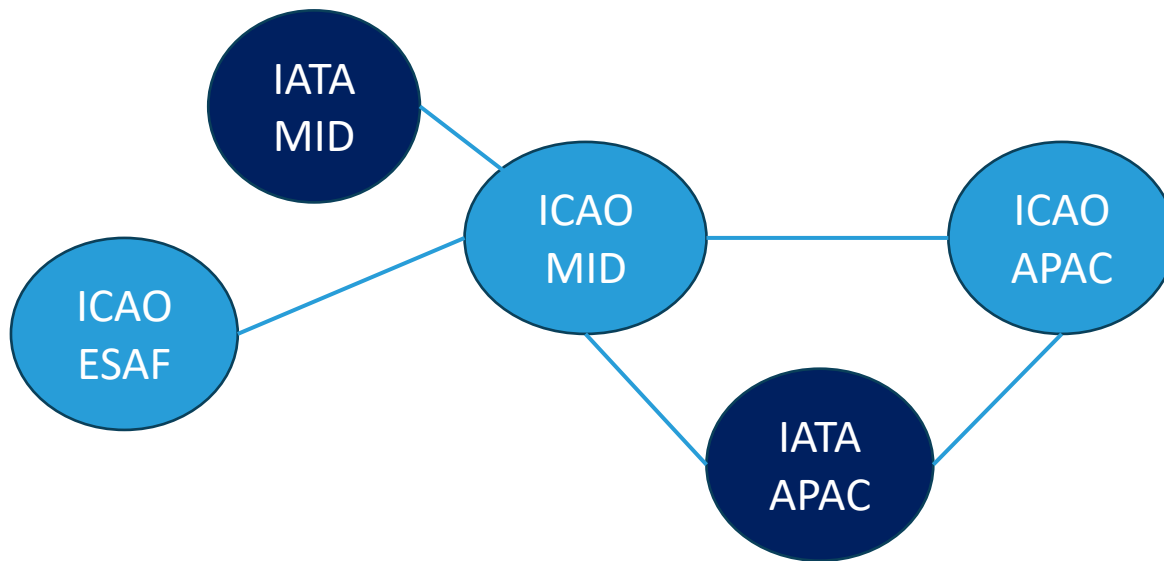
(source: ABC News)

Advisories



(source: Toulouse VAAC)

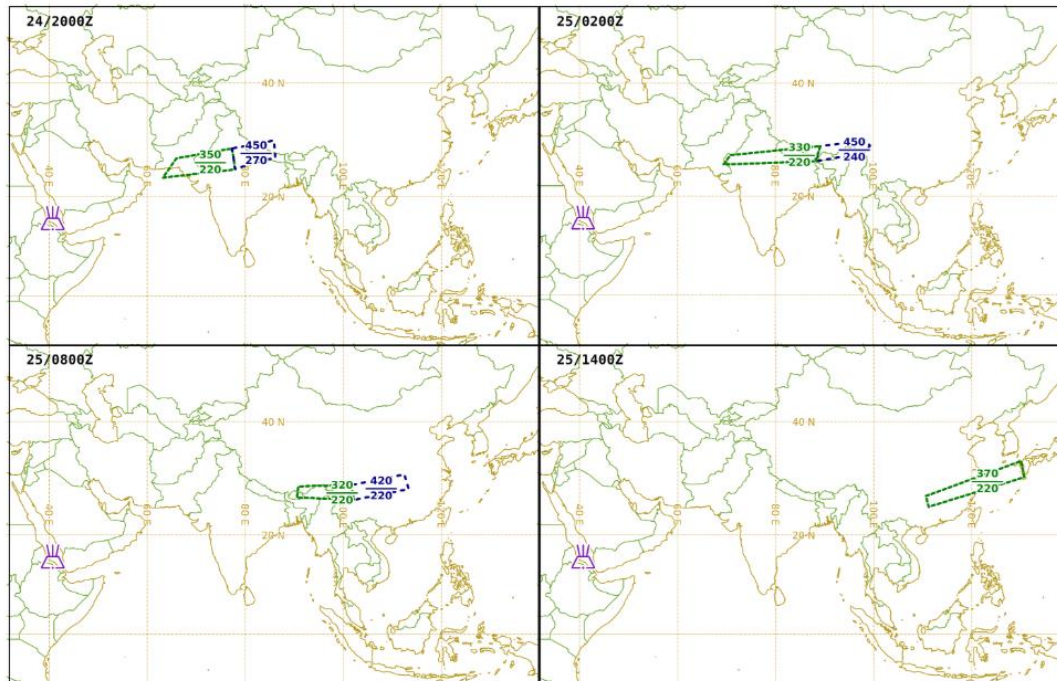




ICAO Regional Officers, ATM
ICAO Regional Officers, MET

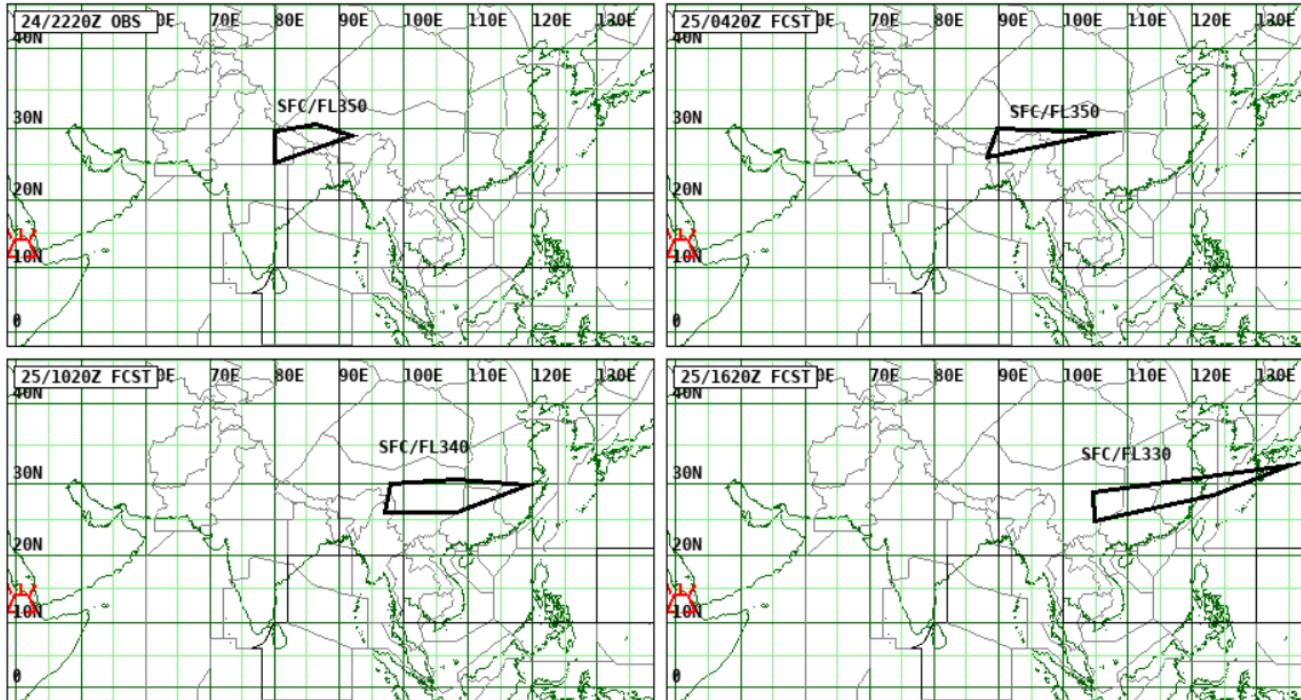
HAYLI GUBBI.12 - 2025-11-24 21:30 utc

Advisories



Eruption of Hayli Gubbi has stopped. An ash cloud is moving toward China.

Advisory NR: 2025/1



Volcanic Ash Advisory Centres

VAAC Anchorage

VAAC London

VAAC Toulouse

VAAC Buenos Aires

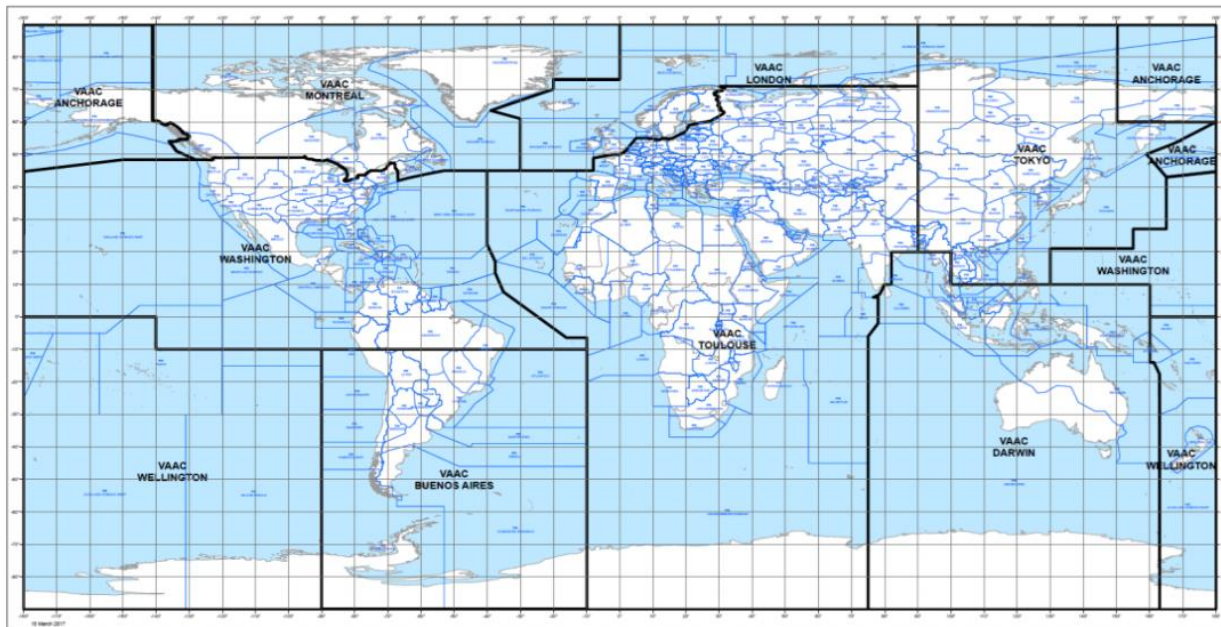
VAAC Montreal

VAAC Washington

VAAC Darwin

VAAC Tokyo

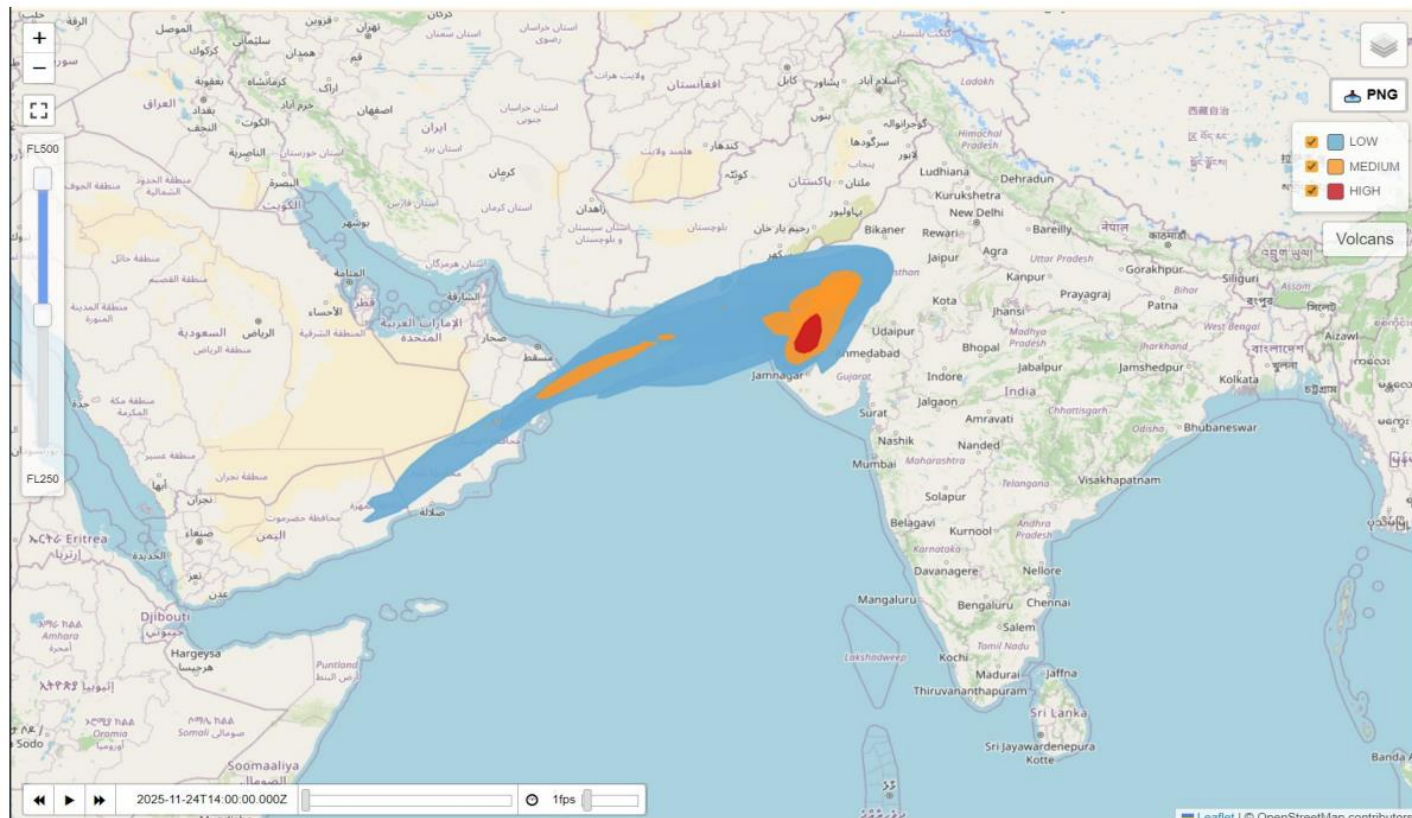
VAAC Wellington



Thank You



Image from VAAC
Toulouse on
Quantitative
Volcanic Ash
Concentration
information for
airspace users.



Deterministic QVA, user selected FL250 to FL500
2025 11 24 14z

<https://vaac.meteo.fr/>