

NGA

The logo graphic for NGA, featuring a stylized globe with orbital lines and a star.

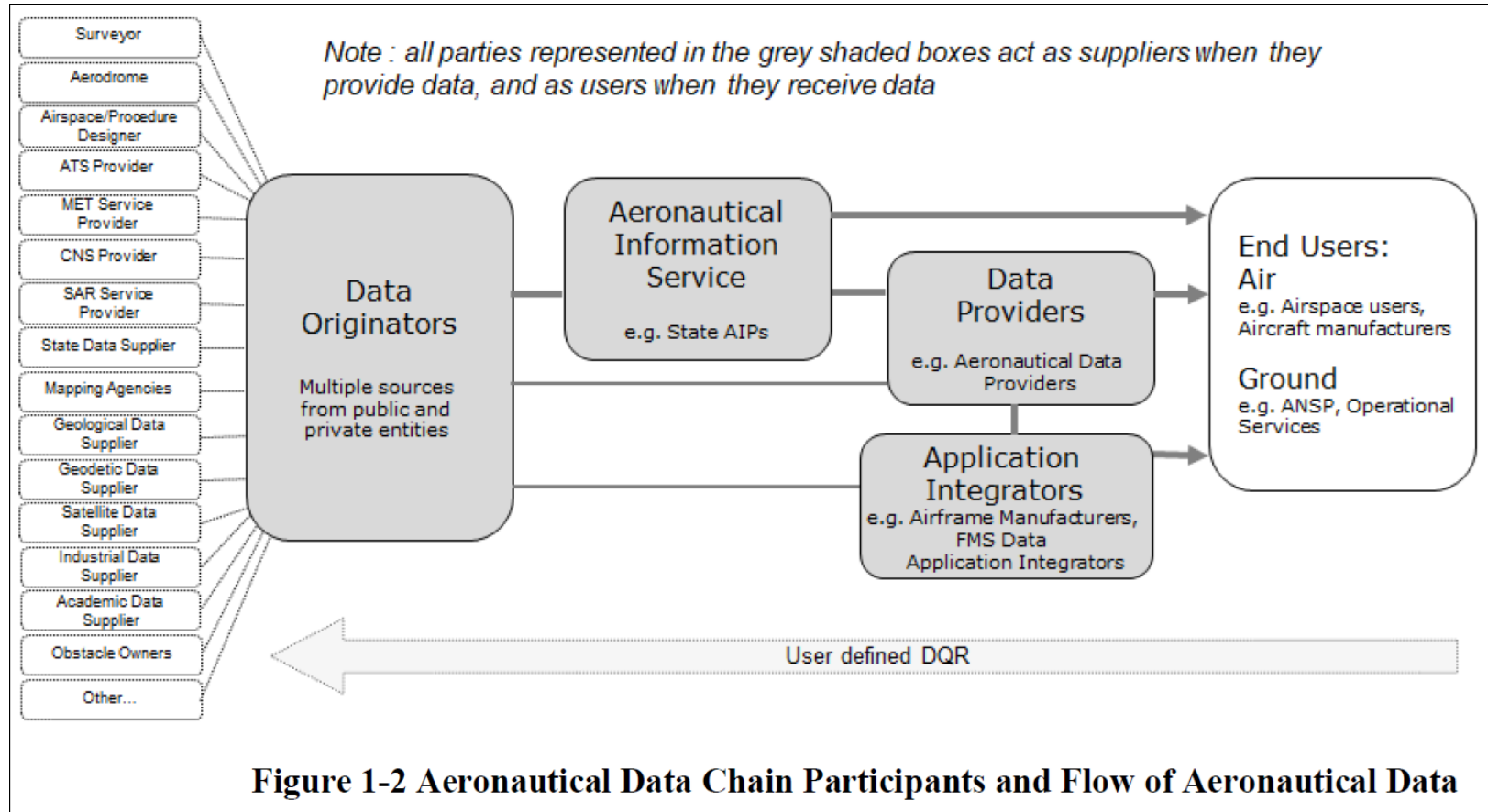
Challenges on 5LNC from Data Perspective

Jodi Brainard

JUN2025

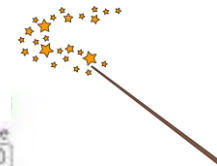
Know the World, Show the Way...from Seabed to Space

What happens to the data from when you publish....



Reference: RTCA DO-200

ARINC 424 – Data encoded



Via	Seq	Pt	Fix	Typ	F/D	TD	Mag	Crs	Alt 1	Alt 2	Vert	Angle	RNP	Speed	Limit	Distance	Time	Rec	Navaid	Update
RW08L	10	IF	DINAN																Prop	2210
RW08L	15	TF	FF101						FL240				1	300 Kt					Prop	2210
RW08L	20	TF	XERAM										1						Prop	2210
RW08L	30	TF	ENDRI	Holding									1						Prop	2210
RW08L	40	TF	DEVIM						FL130				1						Prop	2210
RW08L	50	TF	LORNI					Stwn	FL120	FL110			1						Prop	2210
RW08R	10	IF	DINAN																Prop	2210
RW08R	15	TF	FF101						FL240				1	300 Kt					Prop	2210
RW08R	20	TF	XERAM										1						Prop	2210
RW08R	30	TF	ENDRI	Holding									1						Prop	2210
RW08R	40	TF	DEVIM						FL130				1						Prop	2210
RW08R	50	TF	LORNI					Stwn	FL120	FL110			1						Prop	2210
RW09L	10	IF	DINAN																Prop	2210
RW09L	15	TF	FF101						FL240				1	300 Kt					Prop	2210
RW09L	20	TF	XERAM										1						Prop	2210
RW09L	30	TF	ENDRI	Holding									1						Prop	2210
RW09L	40	TF	DEVIM						FL130				1						Prop	2210
RW09L	50	TF	LORNI					Stwn	FL120	FL110			1						Prop	2210
RW09R	10	IF	DINAN																Prop	2210
RW09R	15	TF	FF101						FL240				1	300 Kt					Prop	2210
RW09R	20	TF	XERAM										1						Prop	2210
RW09R	30	TF	ENDRI	Holding									1						Prop	2210
RW09R	40	TF	DEVIM						FL130				1						Prop	2210
RW09R	50	TF	LORNI					Stwn	FL120	FL110			1						Prop	2210

Example: ARINC 424 encoding of STARS

The Challenge.....

Flight Management System

Can you tell what airspace these
5LNC shown are in?

What can happen if the wrong
5LNC selected?



What happens with the data.....

Waypoints are code with either ICAO Region or Country Code

Some data houses provided in a regional areas



Relies on Flight Crew and Planning Teams

Thank You