

# Management of 5LNC in Republic of Korea

2025.6.



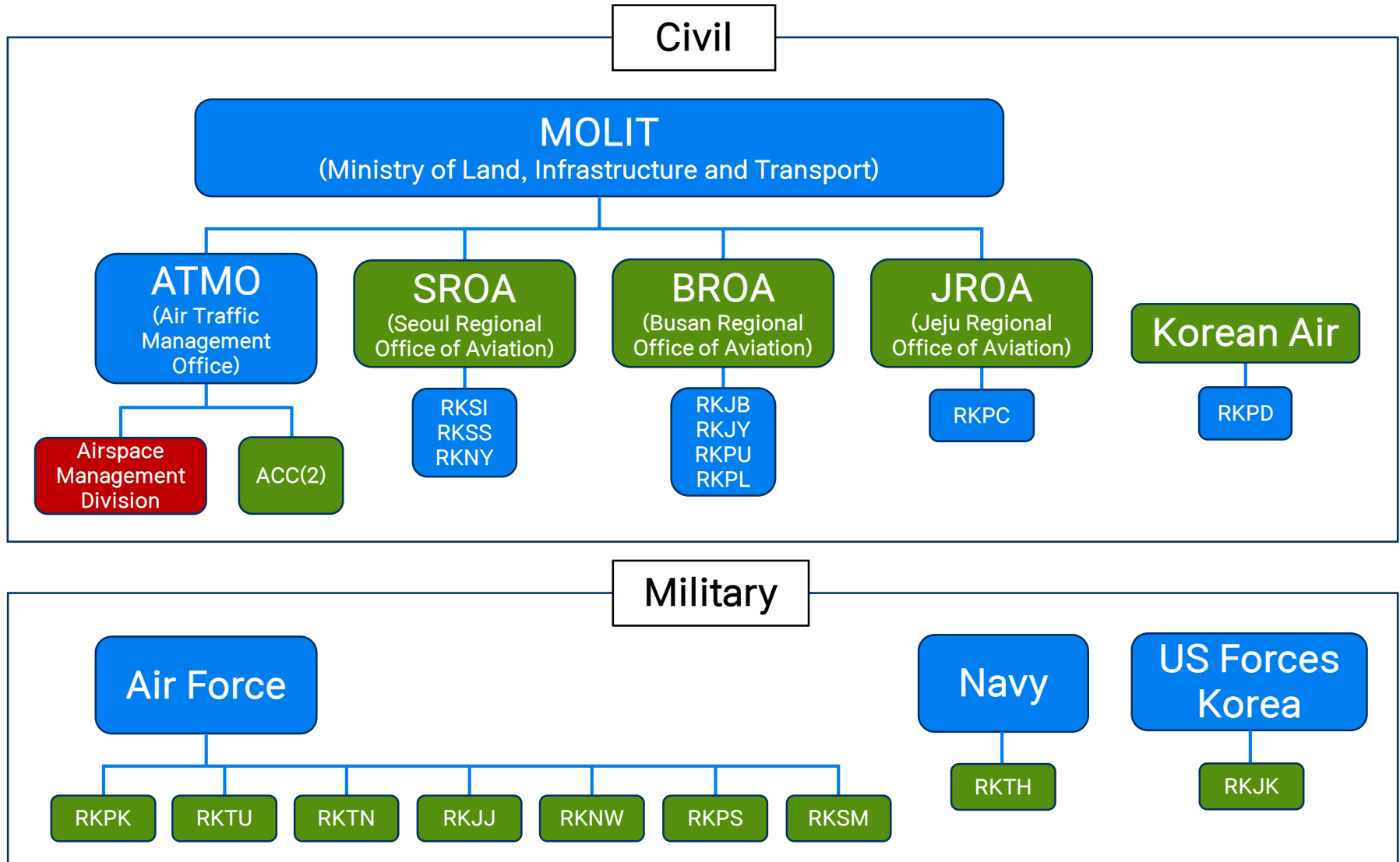
MOLIT  
Air Traffic Management Office  
Airspace Manage Division

## —• Contents

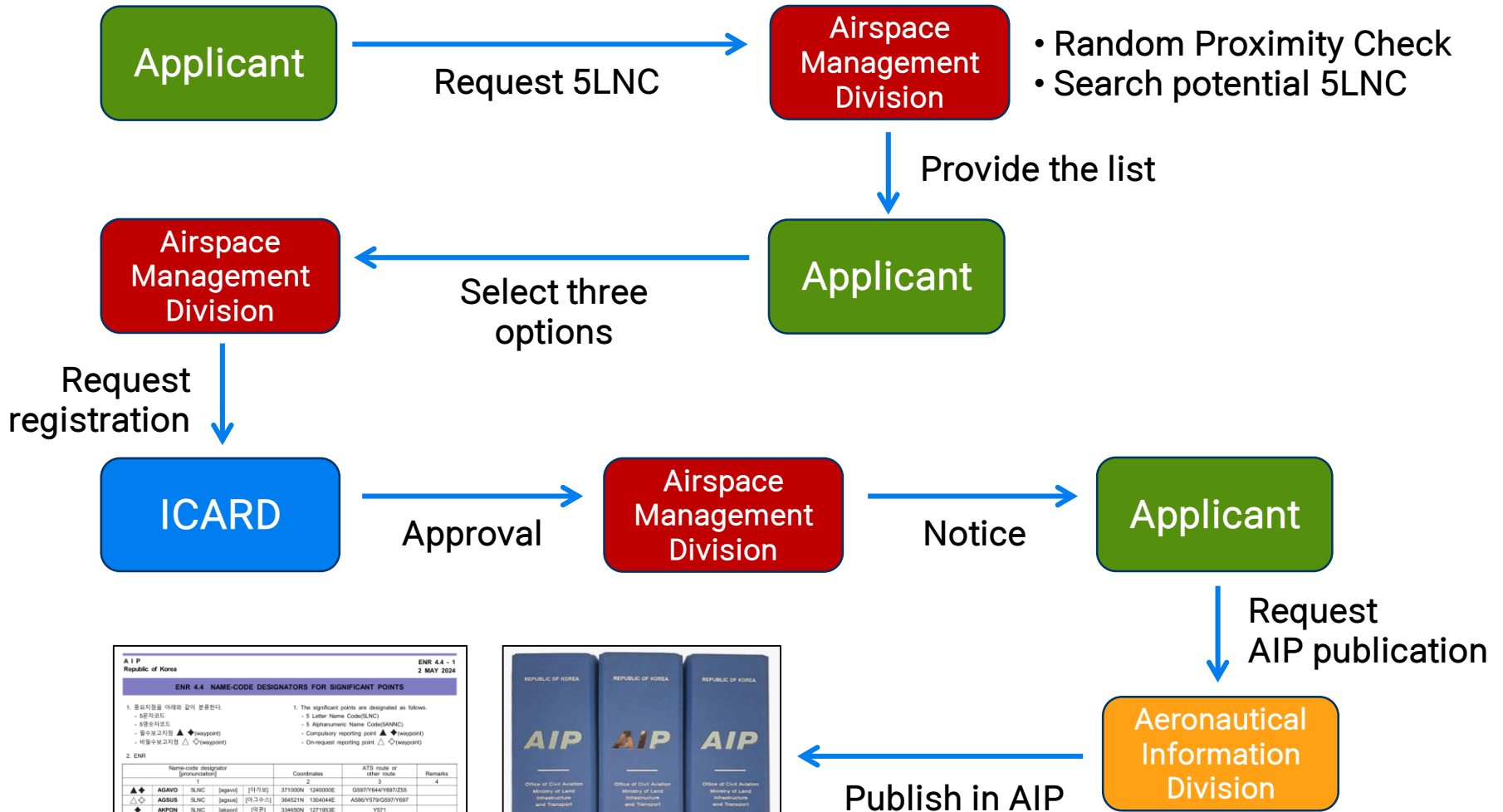
- 01 5LNC Operation in ROK
- 02 2025 Periodic Review of 5LNC
- 03 Challenge1(Sharing Information)
- 04 Challenge2 → Request2
- 05 5ANNC Operation in ROK
- 06 Discussion

# 01 5LNC Operation in ROK

## • Authorized User and Applicant of 5LNC



## Application and Registration Process



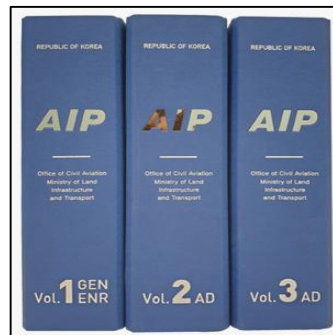
AIP  
Republic of Korea  
ENR 4.4 - 1  
2 MAY 2024

ENR 4.4 NAME-CODE DESIGNATORS FOR SIGNIFICANT POINTS

1. 중요지점을 지역의 값이 분류한다.  
- 5자리 코드  
- 5문자 코드  
- 필수보고지점 ▲ (waypoint)  
- 비필수보고지점 △ (waypoint)

2. ENR

1	Name-code designator (pronunciation)	2	Coordinates	3	ATS route or other route	Remarks
▲	AGAVD SLNC [가비드]	371000N 124000E	G597Y644Y697Z25			
△	AGRUS SLNC [가그루스]	364521N 130454E	A586Y579Y587Y187			
◆	APPOH SLNC [아포하]	334630N 127193E	Y571			
◆	ANDOL SLNC [안돌]	375958N 133000E	L512			
△	ANKUS SLNC [안쿠스]	350730N 128416E	V543Y253Y781			
◆	ANROD SLNC [안로드]	343758N 128293E	Y571283			
△	ANISM SLNC [안이스]	372220N 124000E	G597Y697			
△	ANUBA SLNC [안우바]	360146N 127352E	V543Y253			
◆	APARU SLNC [아파루]	352442N 129332E	V151Y744			
◆	APELA SLNC [아펠라]	344329N 129140E	A682Y782			
△	ATASD SLNC [아타드]	365244N 126557E	Y722			
△	ATINA SLNC [아티나]	334300N 127042E	A686			
◆	ATOTI SLNC [아토티]	300013N 120154E	B576Y722Z26			



## Registered 5LNC and Management

Page 1 of 11					
Code	Latitude	Longitude	Coord. States	Duplication	Purpose
Republic of Korea/République de Corée				KOR	
Page 2 of 11					
Code	Latitude	Longitude	Coord. States	Duplication	Purpose
Republic of Korea/République de Corée				KOR	
ADGES	343803N				TA
AGSUS	364520N				ENR
AGTEG	351335N				
AGUTI	350141N				
AISON	350723N				
AKBIN	333122N				
AKEVI	345829N				
AKLOG	350203N				
AKPET	345817N				
AKPON	334650N				
AKUBO	350737N				
ALDON	365646N				
ANBOG	373515N				
ANDOL	373958.37N				
ANJAY	344543N				
ANKEG	372807N				
ANKIB	363903N				
ANKUS	350730N				
ANOTI	373743N				
ANROD	343758N				
ANSIM	372323N				
ANUBA	350745.94N				
APAKI	364704N				
APARU	352442.13N				
APDOP	355525N				
APELA	344323.88N				
APOMO	372721N				
ARECO	351422N				
ARIMU	345004N				
AROKU	373954N				
ARUNA	372342N				
ASIDI	374013N				
ASORA	364240N				
ATASO	355343.61N				
ATIMO	332353N				
ATINA	334320.16N				
ATKON	374000N				
ATLAX	352149N				
ATNER	370616N				
ATOTI	300011.88N				
AURIO	345917N				
AVMET	342708N				
AVNIS	345339N				
AYEON	350910N				
BAHDA	345334N				
BAKJO	363320N				
BANYA	364012N				
BASEM	365037.24N				
BATAP	372055N				
#: Duplicated within the same region					

Page 2 of 11					
Code	Latitude	Longitude	Coord. States	Duplication	Purpose
Republic of Korea/République de Corée				KOR	
BAVIX	375611N	1285533E			TA
BEDAR	315401N	1262910E	Also Japan		ENR
BEDES	360904.70N	1290000E			
BEDOM	352512.66N	1290000E			
BELTU	371218N	1290000E			
BEMGA	351014N	1290000E			
BEPKO	333910N	1290000E			
BESNA	343718N	1290000E			
BEVSI	351824N	1290000E			
BEZEE	355259N	1290000E			
BIBDU	354242N	1290000E			
BIDBA	372033N	1290000E			
BIDRI	362007N	1290000E			
BIGOB	364325.43N	1290000E			
BIGTU	330930N	1290000E			
BIKLA	351059N	1290000E			
BIKSI	374032N	1290000E			
BILUM	334613N	1290000E			
BINIL	372349.23N	1290000E			
BIRIN	371438N	1290000E			
BIROM	334734N	1290000E			
BITIM	374048N	1290000E			
BITUX	361644.91N	1290000E			
BLAZZ	360924N	1290000E			
BOBIB	370532N	1290000E			
BODEK	372237N	1290000E			
BODOL	371121.56N	1290000E			
BOEUN	363221N	1290000E			
BOGAN	371240.64N	1290000E			
BONSO	302840.41N	1290000E			
BOPKI	365432N	1290000E			
BOPTA	364406.39N	1290000E			
BOREV	354011N	1290000E			
BORNU	371932N	1290000E			
BOSPI	345831N	1290000E			
BOTRU	350141N	1290000E			
BOXOL	354430N	1290000E			
BUGYO	345226N	1290000E			
BUKIL	364823N	1290000E			
BULGA	355608.63N	1290000E			
BULTI	364322.30N	1290000E			
BUMSI	371510N	1290000E			
BUNDA	373916N	1290000E			
BUPGU	350925N	1290000E			
BURIM	345952N	1290000E			
BUSKO	374033.31N	1300000E			
BUVPU	351329N	1290000E			
CASTO	373405.59N	1290000E			
CAVOI	373202N	1290000E			
CHANO	350615N	1290000E			
CHISE	373750N	1290000E			
CHUJA	335947N	1290000E			
CIKRA	354803N	1290000E			
#: Duplicated within the same region					

Page 3 of 11					
Code	Latitude	Longitude	Coord. States	Duplication	Purpose
Republic of Korea/République de Corée				KOR	
COBET	361439N	1263615E			TA
COWON	363914N	1271815E			TA
DABIK	361743.25N	1301143.49E			ENR
DAEBO	360826N	1293155E			TA
DAKPI	332412N	1255319E			TA
DALKA	371736N	1263430E			TA
DALPO	365835N	1242453E			ENR
DALSU	350731.04N	1264206.46E			ENR
DANPA	353036.27N	1242452.57E			ENR
DANTI	371805.80N	1243929.43E			ENR
DODBI	355740N	1283210E			TA
DOGDI	355336N	1291203E			TA
DOKDO	373617N	1263307E			TA
DOKPA	355016N	1293211E			TA
DOKVU	335450N	1270019E			TA
DOMKO	322847.56N	1255859.15E			ENR
DOOBU	353055N	1292130E			TA
DORTI	355922N	1293357E			TA
DOTOL	341515.44N	1263636.58E			ENR
DOVRA	350758N	1263122E			TA
DOVUR	354949N	1284622E			TA
DOWAN	350916N	1263316E			TA
DOXEL	371904N	1275309E			TA
DUBAL	372427N	1275629E			TA
DUBUN	380515N	1285214E			TA
DUHOT	372912N	1264200E			TA
DUKAL	333859N	1264539E			TA
EGOBA	372914.70N	1272245.90E			ENR
EGOMI	331225N	1263241E			TA
ELAPI	362014.13N	1285050.91E			ENR
ELGEP	314653N	1255617E			ENR
ELGUK	371959N	1254525E			TA
ELMAP	371616N	1271115E			TA
ELPEX	352222N	1265900E			TA
ELPOS	355410N	1264707E			ENR
EMROS	371604N	1261543E			TA
EMTIC	355654N	1291910E			TA
ENBUK	372331N	1263119E			TA
ENDEX	371703N	1274456E			TA
ENGOT	344834N	1282952E			ENR
ENLAR	372212N	1274828E			TA
ENPIL	370939N	1264334E			TA
ENPUB	350715N	1280621E			TA
ENSAI	365554N	1274747E			ENR
ENSUM	321302N	1244635E			ENR
ENTEL	362310.51N	1265705.16E			ENR
ESBOS	364645N	1274714E			TA
ESDEM	360151N	1282444E			TA
ESLOL	372434N	1274956E			TA
ESNEG	371014N	1295051E			ENR
EXUTO	365309N	1263729E			TA
FOKAN	350228N	1275902E			TA
#: Duplicated within the same region *: Duplicated in another region					

• Total 556 5LNC in ICARD

• Periodic Review every 5years

→ Conducted MAR~MAY,2025

# 02 2025 Periodic Review of 5LNC

## Review Method

Page 1 of 11

Code	Latitude	Longitude	Coord. States	Duplication	Purpose
Republic of Korea/République de Corée					KOR
Republic of Korea/République de Corée					KOR
ADGES	343803N	1273514E			TA
AGSUS	364520N	1304044.01E			ENR
AGTEG	351335N	1281850E			TA
AGUTI	350141N	1273134E			TA
AISON	350723N	1280610E			TA
AKBIN	333122N	1261455E			TA
AKEVI	345829N	1285748E			TA
AKLOG	350203N	1275833E			TA
AKPET	345817N	1275452E			TA
AKPON	334650N	1271953E			ENR
AKUBO	350737N	1275423E			TA
ALDON	365646N	1293523E			TA
ANBOG	373515N	1262032E			TA
ANDOL	373958.37N				ENR
ANJAY	344543N				TA
ANKEG	372807N				TA
ANKIB	363903N				TA
ANKUS	350730N				ENR
ANOTI	373743N				TA
ANROD	343758N				ENR
ANSIM	372323N				ENR
ANUBA	350745.94N	1273522.79E			ENR
APAKI	364704N	1273625E			TA
APARU	352442.13N	1290932.13E			ENR
APDOP	355525N	1263640E			TA
APELA	344323.88N	1291359.88E	Also Japan		
APOMO	372721N	1271104E			TA
ARECO	351422N	1284659E			TA
ARIMU	345004N	1264702E			TA
AROKU	373954N	1275615E			TA
ARUNA	372342N	1274614E			TA
ASIDI	374013N	1262651E			TA
ASORA	364240N	1272820E			TA
ATASO	355343.61N	1265657.01E			ENR
ATIMO	332353N	1264351E			TA
ATINA	334320.16N	1270423.24E			ENR
ATKON	374000N	1261823E			TA
ATLAX	352149N	1290430E			TA
ATNER	370616N	1261853E			TA
ATOTI	300011.88N	1251153.88E	Also Japan		
AURIO	345917N	1275325E			TA
AVMET	342708N	1274629E			TA
AVNIS	345339N	1262301E			TA
AYEON	350910N	1261232E			TA
BAHDA	345334N	1285706E			TA
BAKJO	363320N	1271420E			TA
BANYA	364012N	1294006E			TA
BASEM	365037.24N	1275709.88E			ENR
BATAP	372055N	1263317E			TA

ICARD

Compare

AIP  
Republic of Korea  
ENR 4.4 - 1  
2 MAY 2024

ENR 4.4 NAME-CODE DESIGNATORS FOR SIGNIFICANT POINTS

1. 중요지점을 아래와 같이 분류한다.  
- 5문자코드  
- 5영숫자코드  
- 필수보고지점 ▲ ◆(waypoint)  
- 비필수보고지점 △ ◇(waypoint)

1. The significant points are designated as follows.  
- 5 Letter Name Code(5LNC)  
- 5 Alphanumeric Name Code(5ANNC)  
- Compulsory reporting point ▲ ◆(waypoint)  
- On-request reporting point △ ◇(waypoint)

2. ENR

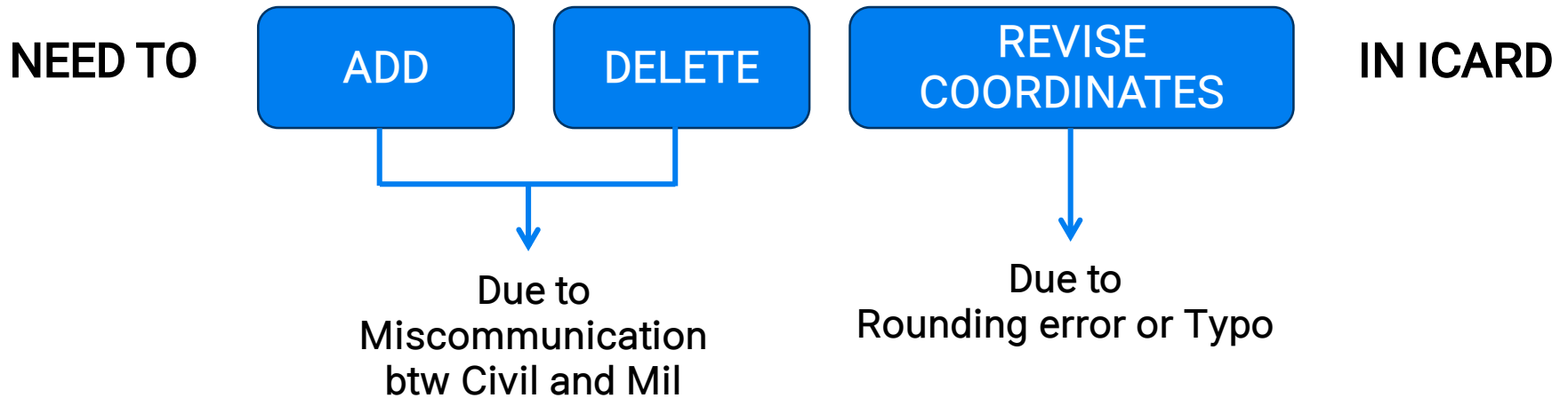
Name-code designator [pronunciation]	Coordinates	ATS route or other route	Remarks
1	2	3	4
▲◆ AGAVO 5LNC [agavo] [아가보]	371000N 1240000E	G597/Y644/Y697/Z55	
△◇ AGSUS 5LNC [agsus] [아그수스]	364521N 1304044E	A586/Y579/G597/Y697	
◆ AKPON 5LNC [akpon] [악푼]	334650N 1271953E	Y571	
◆ ANDOL 5LNC [andol] [안돌]	373958N 1330000E	L512	
△◇ ANKUS 5LNC [ankus] [안쿠스]	350730N 1284616E	V543/Y253/Y781	
◆ ANROD 5LNC		Y571/Z83	
△◇ ANSIM 5LNC		Y597/Y697	
△◇ ANUBA 5LNC		Y543/Y253	
▲◆ APARU 5LNC		Y711/Y744	
◆ APELA 5LNC		Y582/Y782	
◆ ATASO 5LNC		Y722	
△◇ ATINA 5LNC		A586	
▲◆ ATOTI 5LNC		Y672/Z286	
△◇ BASEM 5LNC [basem] [바셈]	365037N 1275710E	G585/Z53/Y685	
◆ BEDAR 5LNC [bedar] [베다르]	315401N 1262910E	Y590	
◆ BEDES 5LNC [bedes] [베데스]	360905N 1264844E	Z51/Y711	
▲◆ BEDOM 5LNC [bedom] [베돔]	352513N 1291754E	A586/Y579	
◆ BELTU 5LNC [beltu] [벨투]	371218N 1254759E	Y644	
◆ BEPKO 5LNC [bæpkɔ] [뵍코]	333910N 1265514E	Y572/HOLDING	
◆ BESNA 5LNC [besna] [베스나]	343718N 1290751E	Y781	
◆ BIDRI 5LNC [bidri] [비드리]	362007N 1242453E	Y655	
▲◆ BIGOB 5LNC [bigop] [빅곰]	364325N 1280952E	G585/Y685	
▲◆ BIKSI 5LNC [biksɪ] [빅시]	374032N 1283504E	G597/Y697	
◆ BILUM 5LNC [bilum] [빌룸]	334613N 1270439E	Y572/Z85	
▲◆ BINIL 5LNC [binil] [비닐]	372349N 1251359E	G597/Y697	
▲◆ BITUX 5LNC [bituks] [비투크스]	361645N 1280148E	A582/Z53/Y782	
◆ BODOL 5LNC [bodol] [보돌]	371122N 1244954E	Y644	
◆ BOGAN 5LNC [bogan] [보간]	371241N 1262812E	Y644	
◆ BONSO 5LNC [bonsɔ] [본소]	302840N 1250851E	Y711/Z86	
◆ BOPTA 5LNC [bopta] [보타]	364406N 1263658E	Z51	
▲◆ BULGA 5LNC [bulgɔ] [불가]	355609N 1294924E	A586/Y579/G585/Y685	
◆ BULTI 5LNC [bultɪ] [벌티]	364322N 1264930E	Y711/Z50	
△◇ BUSKO 5LNC [busko] [버스코]	374033N 1301610E	Y233/B467/Y437	
▲◆ DABIK 5LNC [dabik] [다빅]	361743N 1301143E	A586/Y579	
◆ DALPO 5LNC [dalpo] [달포]	365835N 1242453E	Z57/Y655	
△◇ DALSU 5LNC [dalsu] [달수]	350731N 1264206E	Y711/Y253/Y543	
◆ DANPA 5LNC [danpa] [단파]	353036N 1242453E	Y655	
▲ DANTI 5LNC [danti] [단티]	371806N 1243929E	G597	

AIP

Change : Establishment of BIDRI  
OFFICE OF CIVIL AVIATION

AIRAC AIP AMDT 4/24  
Effective : 1600UTC 12 JUN 2024

### • The Result



## 03 Challenge1(Sharing Information)

### Revision of ICARD 5LNC Coordinates

NEED TO

REVISE  
COORDINATES

IN ICARD

Due to  
Rounding error or Typo

ICARD : “5LNC should be changed  
if the coordinates differed by more than 1NM.”



### • Military 5LNC Management



“We want to add our 5LNC to ICARD.”



ICARD Regional Data Manager says,

- ① ICARD is for civil aviation operations
- ② They cannot be selected in the aircraft's FMS
- ③ Civil ATC would not use that 5LNC
- ④ Might be a reduction in the number of available 5LNC
- ⑤ Need to have internal management process

**Request.**

Is it possible to make a new feature in ICARD system that can compare a new 5LNC against a specific, non-registered 5LNC for sound-like checking?

## • Not Being Managed



- Flight Procedure Design designates
- Not being managed now in ROK

Question.

Any States managing 5ANNC?  
If so, how they are being managed?

Is there any potential issue that  
could arise if 5ANNC is not  
managed?

### **Request to ICAO.**

Is it possible to make a new feature in ICARD system that can compare a new 5LNC against a specific, non-registered 5LNC for sound-like checking?

### **Question to the other states.**

Any States managing 5ANNC? If so, how they are being managed?

### **Question to ICAO.**

Is there any potential issue that could arise if 5ANNC is not managed?

# Thank you

Opening the sky  
Connecting the world



MOLIT  
Air Traffic Management Office  
Airspace Manage Division