

Civil/Military ATM Cooperation and Flexible Use of Airspace Webinar

Online
20th-21st Nov 2024

This event is jointly organised with

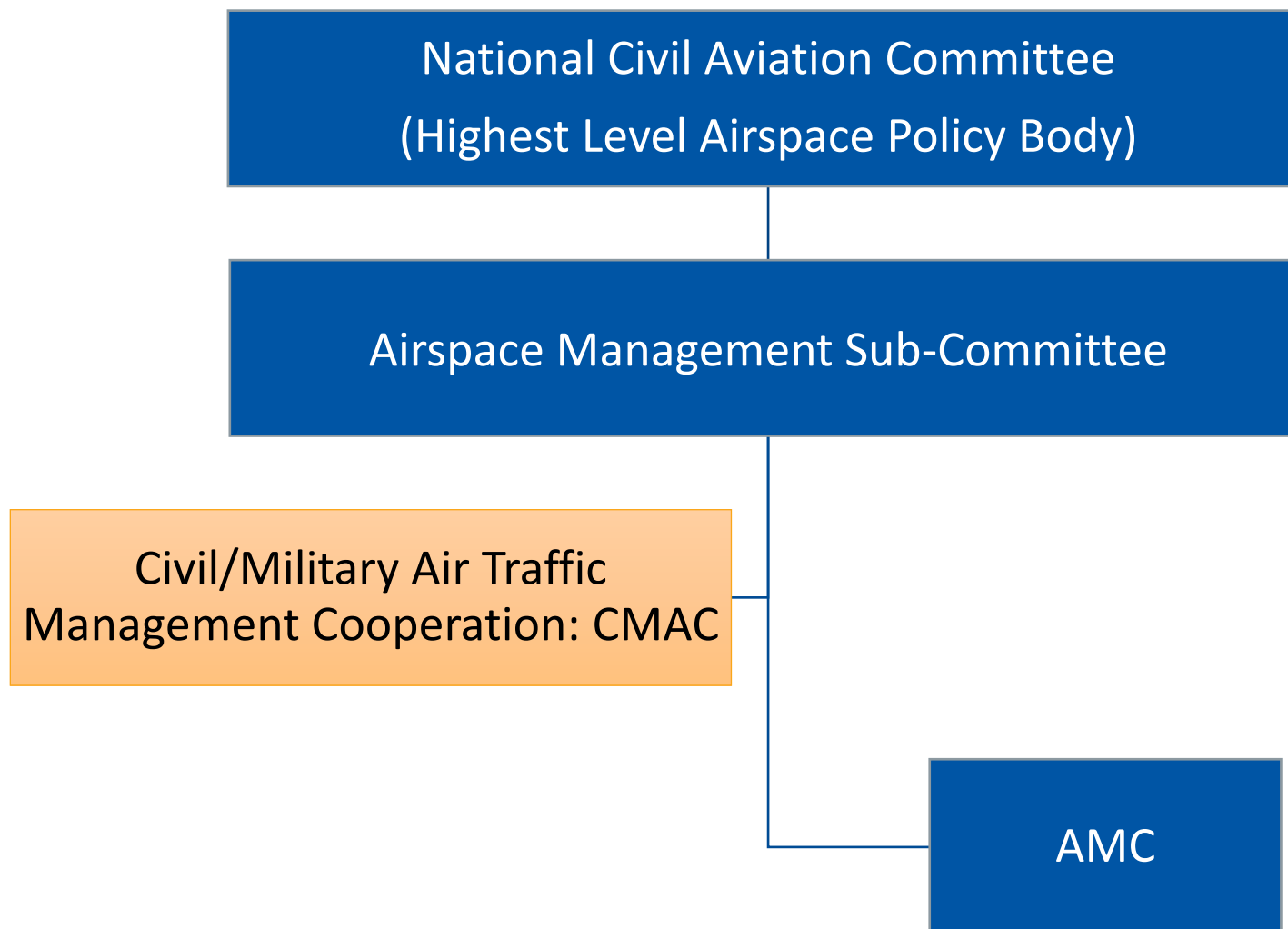


Civil & Military Cooperation in Thailand and Introduction to Airspace Management Cell (Thailand)



- **Ms. Chananya Pinkaewprasert**
- Director, Network Operations ATM Center
- Assistant Deputy Director of AMC

Policy and Regulation



Civil/Military Air Traffic Management Cooperation Committee: CMAC



กองทัพอากาศ
ROYAL THAI AIR FORCE



กองทัพเรือ
Royal Thai Navy



กองทัพบก
ROYAL THAI ARMY

2012

Coordination Body on Policy Level between Royal Thai Air Force (RTAF) and AEROTHAI, Provisional Directorate of Civil/Military ATM Coordination Committee: **P-DCMAC** was formed

Work in conjunction and close coordination with CAAT



2016

participated by Royal Thai Army and Navy



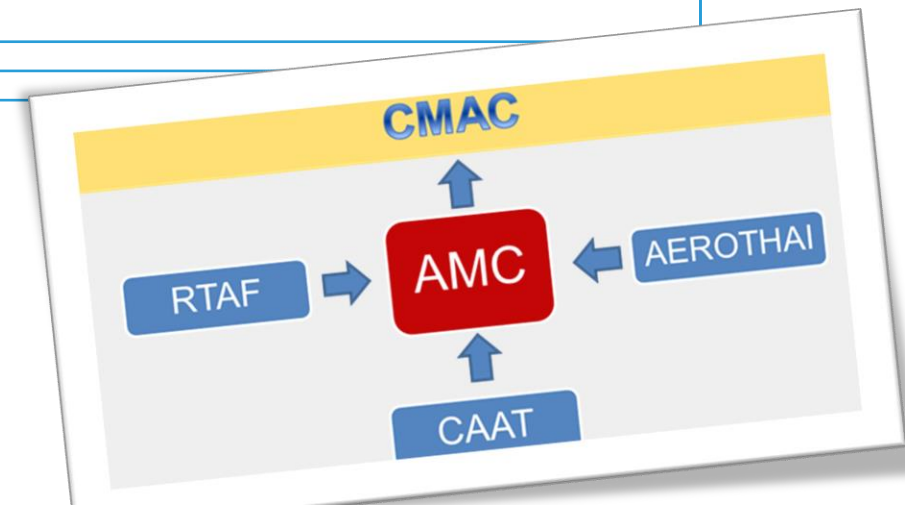
January 2021
change to CMAC

CMAC: Role and Responsibilities

Enable close discussion and expedite implementation and policies between civil & military on ATM and other civil-military cooperation issues

Specific focus on review of special use of airspace and implementation of FUA

Other consultative meetings/panels are also available Civil-Military ATM issues



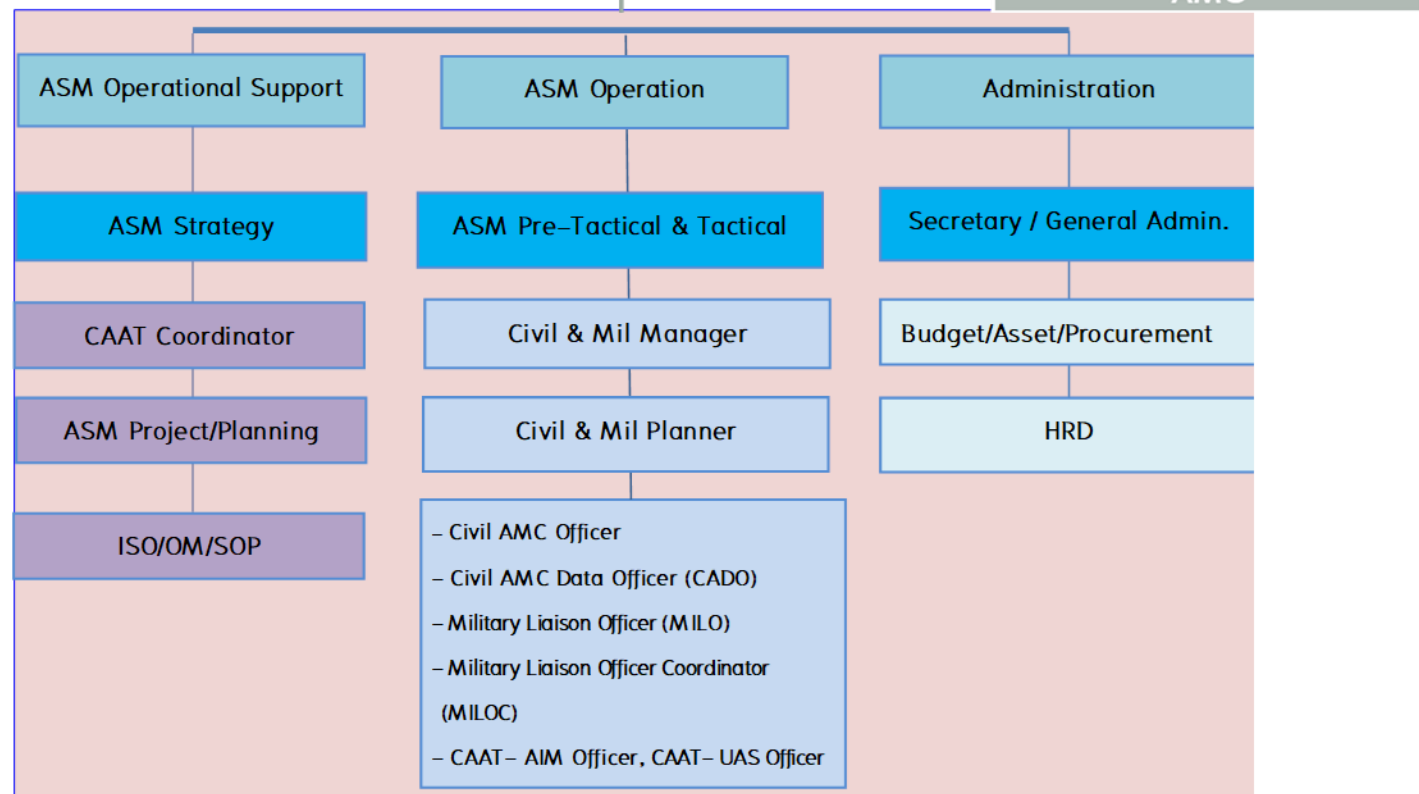
AMC Organization Structure



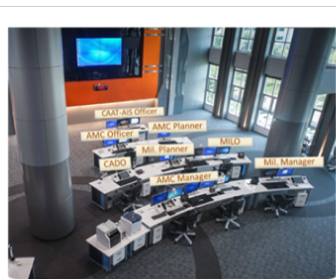
Advisor to Director of AMC

Deputy Director of AMC

Assistant Deputy Director of AMC



Airspace Management Cell



Strategic

Pre-Tactical

Tactical

History

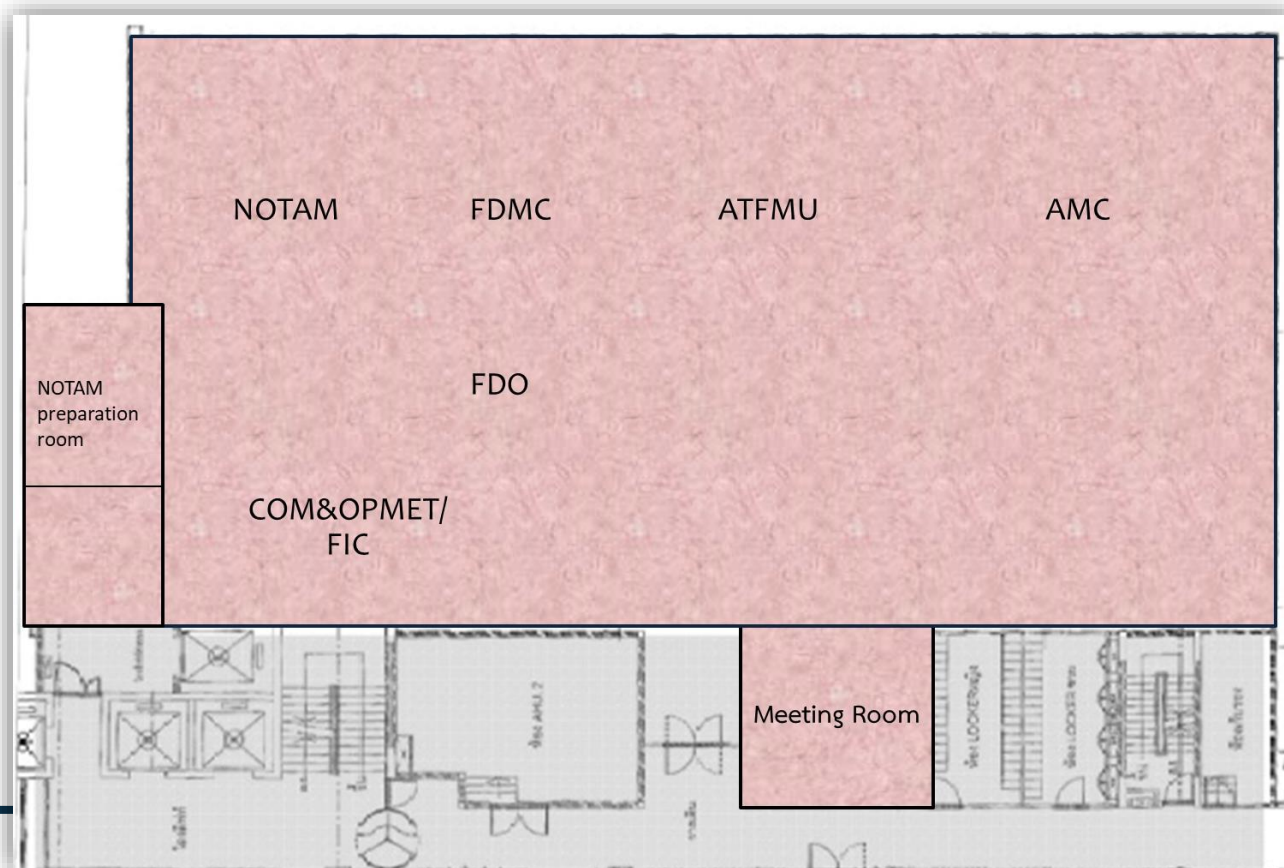
Military liaison officer assigned to Bangkok Area Control Centre to coordinate tactical/real-time use of military area to allow shortcuts, weather deviation for civil traffic

Since 2015, Joint ASM Unit has been in operational trial, Civil-Military Pre-Tactical Airspace Planning Unit (similar to Airspace Management Cell) Daily airspace plan/conditional route availability through NOTAMs

In 2018, Airspace Management Sub-Committee assigned CAAT, AEROTHAI and RTAF to established **Airspace Management Cell (AMC)(Thailand)**

Location

- Start operation in September 2019
- Located in ATM NMC Operation Room, AEROTHAI HQ



Responsibilities

Day-to-day planning and managing the airspace usage base on FUA concept.

Daily allocation of airspace usage of manageable areas (D, R, TRA)

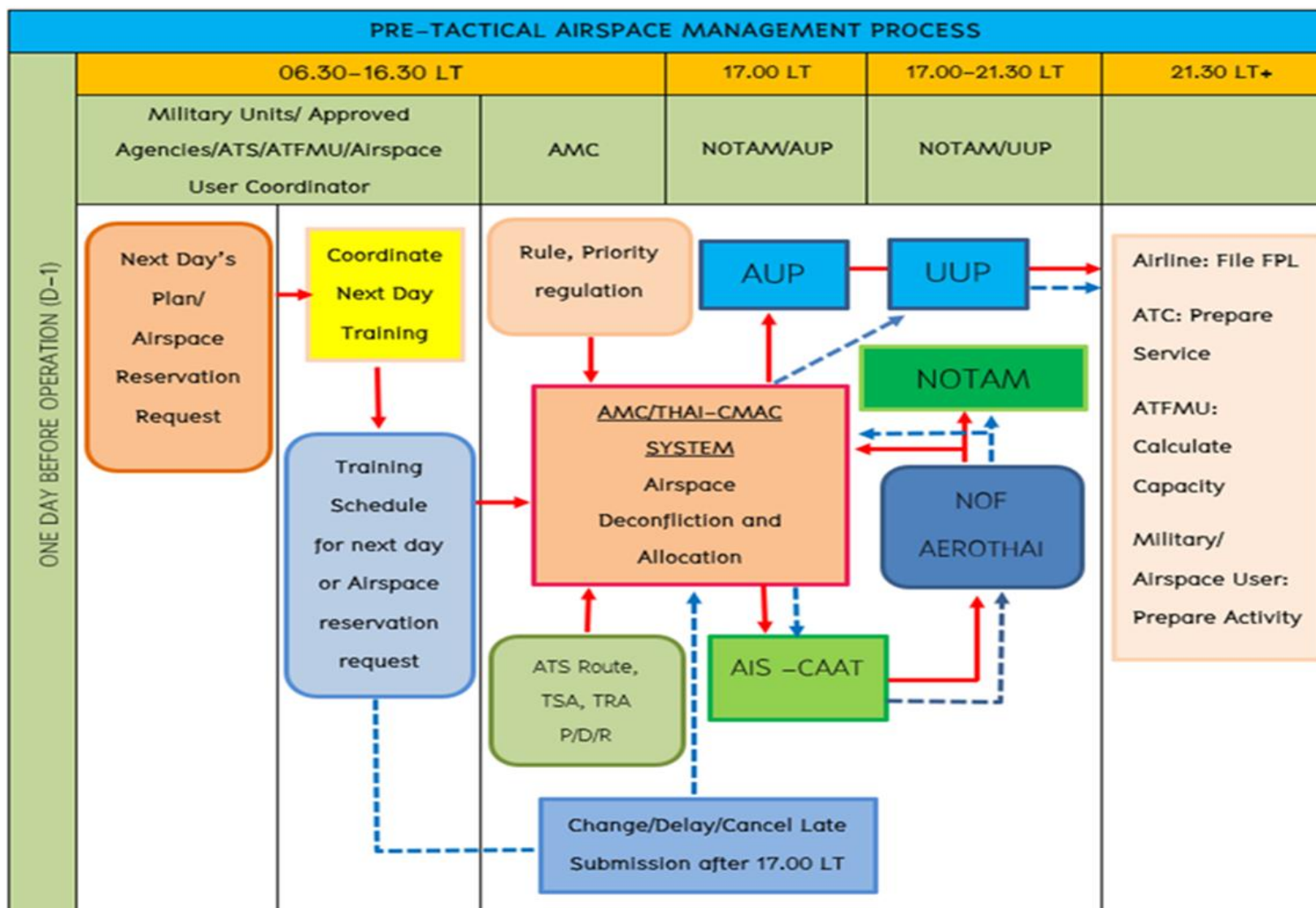
Enhance civil and military airspace coordination procedure of Flexible Use of Airspace (FUA) level 2

Coordinate military training areas in order to maximize shared use of airspace

Provide information and effective coordination with air traffic flow management unit

Airspace Usage Follow-up and evaluation to improve KPI

Airspace management process

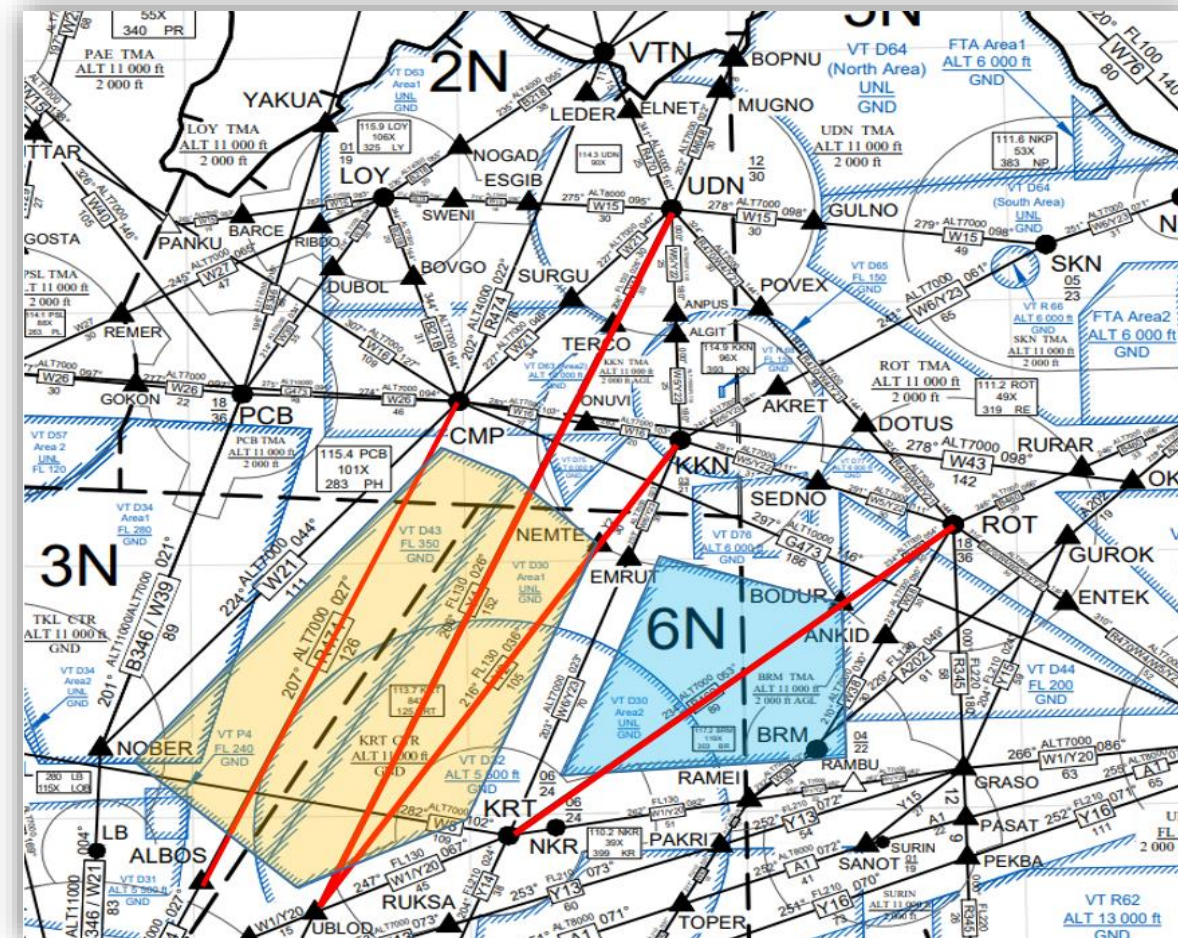


Conditional Route (CDR)

- A non-permanent ATS Route or portion thereof which is only available for flight planning and use under specified condition

- CDR1:** Permanently plannable as per conditions published in AIP

- CDR2:** non-permanently plannable, the route is allocated by AMC and published in AUP/UUP





Airspace Reservation Tool: Thai-CMAC System

www.thaicmac.aerothai.aero

THAI-CMAC

thaicmac.aerothai.aero/#/aup?id=0&date=2023-01-09T17:00:00.000Z

Home Dashboard AUP/UUP Booking Form NOTAM Application NOTAM Tactical Log Statistic Preference Link Help

Notification 0 Bancha (ส่วนควบคุม AMC) Kingbualuang Logout

Airspace Use Plan / Updated Airspace Use Plan

Date: 10-01-2023 From: 09-01-2023 17:00 UTC to: 10-01-2023 16:59 UTC | Last Update: 10-01-2023 02:30 UTC

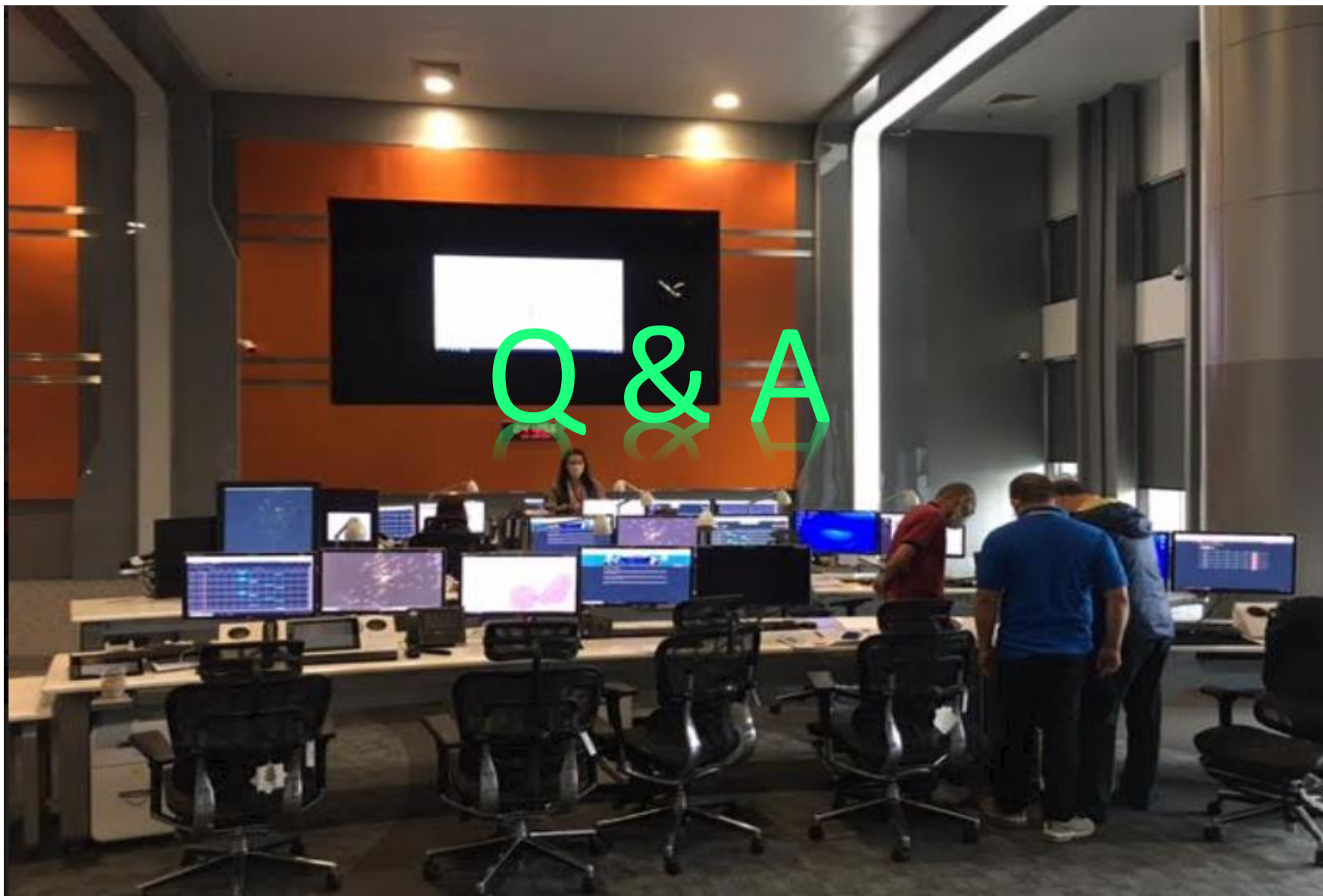
ANNOUNCEMENT

NIL

ALPHA (151)
List of available CDRs category 2 and MIL areas availability

Route	Route segment	level available	Validity period (UTC)	Remark	Last Update	Action
		From	To	From	To	
A1	SELKA-SANOT	FL190	FL250	1700	0129	Auto-Generate 09-01-2023 23:45 UTC
A1	SELKA-SANOT	FL220	FL250	0130	0230	Auto-Generate 09-01-2023 23:45 UTC
A1	SELKA-SANOT	FL190	FL250	0231	1659	Auto-Generate 09-01-2023 23:45 UTC
A334	HTY-VKB	ALT10000	FL460	1700	1659	Auto-Generate 09-01-2023 12:11 UTC
B218	CMP-LOY	ALT7000	FL460	1700	0339	Auto-Generate 09-01-2023 23:45 UTC
B218	CMP-LOY	FL220	FL460	0340	0440	Auto-Generate 09-01-2023 23:45 UTC

ALPHA
List of available CDRs category 2 and MIL area availability





Thank You