



ICAO

International Civil Aviation Organization**Fifth Meeting of the Asia/Pacific Air Traffic Management Automation System Task Force (APAC ATMAS TF/5)***Chengdu, China, 04 – 07 June 2024*

MEETING BULLETIN**1. Location & Schedule of Meeting**

1.1. The Seminar on Air Traffic Management Automation System and the Fifth Meeting of the Asia/Pacific Air Traffic Management Automation System Task Force (ATMAS TF/5) will be held from 4 to 7 June 2024 in Chengdu, China.

1.2. The venue of the Seminar and the Meeting is JoyHub Air Hotel at Shuangliu International Airport, Chengdu, China. The opening session of the events will be held at 0900 hours on Tuesday, 4 June 2024. Address and Contact Details of the venue hotel are here under:

Hotel: JoyHub Air Hotel

Address: No. 6 North 2nd Road, **Shuangliu** International Airport, Chengdu, China

Tel: +86 28 8520 8888

Fax: +86 28 8520 5577

E-mail: 465209677@qq.com

Website: <https://www.agoda.cn/chengdu-airport-hotel/hotel/chengdu-cn.html>

Notice: *There are two international airports in Chengdu, including Chengdu **Shuangliu** International Airport and Chengdu **Tianfu** International Airport, the JoyHub Air Hotel is located at **Shuangliu** International Airport.*

1.3. The daily order of business will be announced on the first day of the event.

1.4. A brief introduction about the host city

Chengdu, known as the "Land of Abundance" and "the City of Heavenly Stewards," is the capital city of Sichuan Province in southwestern China, which is the hometown of panda. With a long history dating back over 2,300 years, Chengdu is renowned for its rich cultural heritage, beautiful natural landscapes, and delectable cuisine.

Chengdu is a city that offers a unique blend of history, culture, natural beauty, and modern conveniences. Whether you're interested in exploring its rich heritage, sampling its delicious cuisine, or experiencing its vibrant modern life, Chengdu is sure to leave a lasting impression on your travel journey.

2. Registration of Delegates

2.1. Delegates are requested to register at the Registration Desk located at the lobby of the JoyHub Air Hotel from 0830 to 0900 hrs on the first day of the event. Delegates are also requested to wear the identification badge all the time during the Seminar and Meeting activities.

3. Officers and Secretariat concerned with the Meeting

3.1. Mr. Luo Yi, Regional Officer CNS of the ICAO Asia and Pacific Office will act as Secretary of the Meeting. His contact address is as follows:

Mr. Luo Yi, Regional Officer CNS

Tel: +66 (2) 537-8189 Ext. 158

Fax: +66 (2) 537-8199

E-mail: yluo@icao.int

4. Meeting Documents for distribution

4.1. All working/information papers for the Meeting will be posted on the ICAO APAC web site. It is strongly recommended that papers to the Meeting be submitted no later than two weeks prior to the Meeting date, in any case, not later than 21 May 2024. Delegates are requested to submit papers via following e-mail addresses, and download and bring all Meeting papers with them. No hard copies of papers will be distributed.

E-mail address for Meeting documents: apac@icao.int cc: yluo@icao.int and ymeefuengsart@icao.int

5. Hotel Accommodation

5.1. JoyHub Air Hotel is located near the Terminal 1 of Chengdu Shuangliu International Airport. It is recommended for delegates to stay at JoyHub Air Hotel for easy access to the Meeting.

5.2. Delegates are requested to make their own arrangements for transportation from Chengdu Shuangliu International Airport or Chengdu Tianfu International Airport to the city, and from their hotels to the venue of the Meeting. The specific details of transportation are to be provided as Appendix B of this bulletin, which will be posted at the meeting page of ICAO APAC website.

5.3. Near the JoyHub Air Hotel, there is West China Hospital (Airport) of Sichuan University (a general hospital, about 8 kilometers away, 18 minutes by car) that can provide comprehensive medical services and emergency support.

5.4. Considering the seasonal and peak festival season, it is recommended to make hotel bookings well in advance.

5.5. A list of hotels located within close proximity of the Meeting Venue is provided in **Appendix A** of this bulletin for easy reference.

6. Passport, Visa and Customs

6.1. Letter of invitation for visa

6.1.1. All foreign nationals entering China must possess valid passports. Delegates from certain countries are not required to obtain visas for a temporary visit. It is suggested that all delegates ascertain the need for and obtain visas from a Chinese Embassy or Consulate prior to arrival in China.

6.1.2. Aisa & Pacific Regional Sub-Office (APAC RSO) will issue letter of invitation for visa, if required by those nominated delegates. For assistance, please forward valid passport to the Secretary at the following address:

yluo@icao.int with cc: ymeefuengsart@icao.int

6.1.3. The following items can be brought in duty free:

- a. Personal effects such as clothing, etc.
- b. 400 cigarettes.
- c. 2 bottles of alcoholic beverages; and
- d. Perfume for personal use.

6.2. There are no restrictions on the import of foreign currency. However, when leaving China, you are not allowed to take out currency which exceeds the amounts you declared when entering.

7. Other Useful Information

7.1. Climate

Chengdu has a humid subtropical monsoon climate. In early June, the temperature is usually between 21-29°C , and sometimes there is rain.

7.2. Currencies and Credit Cards

The unit of currency is Renminbi (RMB), also called China Yuan (CNY). The current exchange rate is at USD\$1.00 \approx RMB 7.1.

Major international credit cards such as Visa, MasterCard, and China Union Pay are accepted at major hotels, department stores and restaurants.

Please ascertain with hotel which you will book if the foreign cash or the type of credit cards you will take is accepted.

7.3. Time

Time in Chengdu is 8 hours ahead of Coordinated Universal Time (UTC +8).

7.4. Electricity

Voltage is 220 volts. The majority of power sockets take two types of plugs: the two-pin parallel plug and the three-pin plug as shown below:



International socket adapters may be necessary for your appliances.

7.5. Language

The official languages are Chinese. English is widely used in young people and service industry.

8. Local Point of Contact

8.1. The delegates are expected to make their own visa / transportation / hotel accommodation arrangements. If you need local support to book the hotel of meeting venue at the negotiated price, please contact the following event assistant based in Chengdu, China. Any enquiries regarding this bulletin and the logistics arrangements for the Meeting are welcome.

Local Contact:

Mr. Zhong Jianhua

Tel: +86-28-82577872

Mobile: +86-13808201681

*E-mail: zhongjianhua@cdatc.com

(*Preferred contact means: email.)

JoyHub Air Hotel (Meeting Venue) :

Address: No. 6 North 2nd Road, Shuangliu International Airport,
Shuangliu District, Chengdu, China
Tel: +86 28 8520 8888
Fax: +86 28 8520 5577
E-mail: 465209677@qq.com
Website: <https://www.agoda.cn/chengdu-airport-hotel/hotel/chengdu-cn.html>
Rank: 5 Stars
Room Price: Deluxe King Room (with breakfast) : CNY558
Negotiated price: CNY420、CNY480(double breakfast)
Deluxe Double Room (with breakfast): CNY538
Negotiated price: CNY460

Hampton by Hilton Chengdu Shuangliu Airport:

Address: No. 32, Section 1, Lingang Road,
Shuangliu District, Chengdu, China
Tel: +86 28 8577 1999
E-mail: 1653517165@qq.com
Website: hamptonhotels.com.cn
Rank: 4 Stars
Room Price: Deluxe King Room (with breakfast): CNY598
Deluxe Double Room (with breakfast): CNY589

Holiday Inn Chengdu Airport:

Address: No.62, Airport South Fourth Road,
Shuangliu District, Chengdu, China
Tel: +86 28 6228 9999
Fax: +86 28 6228 5889
E-mail: reservation@hi-airportcd.com
Website: ihg.com.cn
Rank: 4 Stars
Room Price : Standard King Room (with breakfast) : CNY592
Standard Double Room (with breakfast): CNY592

Shangri-La Chengdu:

Address: No. 9 Binjiang East Road,
Jinjiang District, Chengdu, China
Tel: +86 28 8888 9999
Fax: +86 28 6228 5889
E-mail: reservations.slcd@shangri-la.com
Website: shangri-la.com
Rank: 5 Stars
Room Price: Deluxe King Room (with breakfast) : CNY836
Deluxe Double Room (with breakfast): CNY836

Sheraton Chengdu Lido Hotel:

Address: No. 15, Section 1, Ren Min Zhong Road,
Qingyang District, Chengdu, China
Tel: +86 28 8676 8999
E-mail: reservation.chengdu@sheraton.com
Website: marriott.com.cn
Rank: 5 Stars
Room Price: Deluxe King Room (with breakfast): CNY908

ATMAS TF/5
Appendix A to IP/01

Executive Deluxe King Room (with breakfast): CNY928

Hotel payment: All the above hotels support Visa and Master card payments.

Currency exchange locations:

(1) Bank of China, **Shuangliu** Airport Branch.(Near the JoyHub Air Hotel, about 20 minutes by walk.)

(2) The **2nd** or **4th** floors of **Terminal 1** of Chengdu **Tianfu** International Airport.

Transportation Information

JoyHub Air Hotel/ Chengdu Aggregation Airport Hotel (Meeting Venue) : 成都空港云享酒店 (双流机场店)

Departure from **Shuangliu** International Airport :

Walk: Distance of 1KM, 15 minutes.

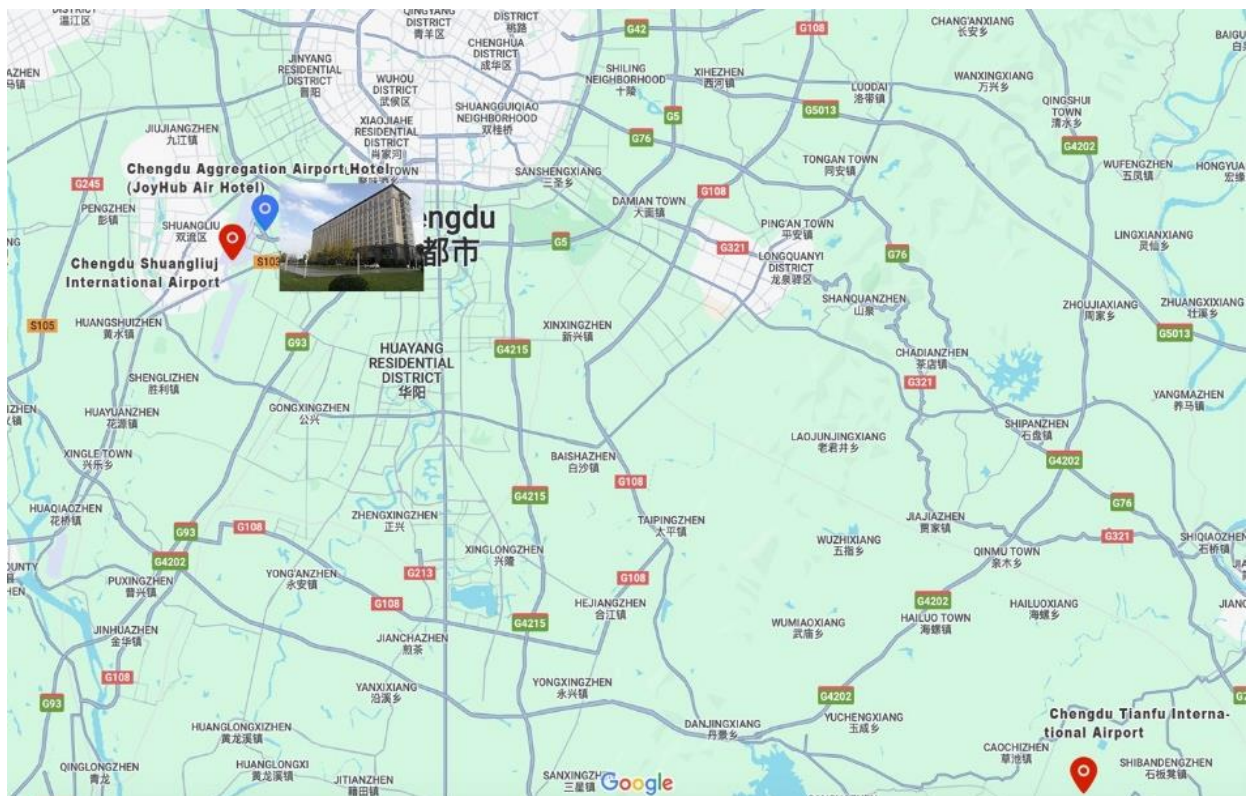
Pick-Up: Contact the hotel by phone in advance (free of charge).(Tel:+86 28 8520 8888)

Departure from **Tianfu** International Airport :

Taxi: Distance of 70KM, 1 hour taxi ride, about 250-300CNY.

Metro&Pick-Up: Take Line 19 from Terminal 1&2 of Tianfu International Airport Station to East of Terminal 2 of Shuangliu International Airport Station, and walk for 15 minutes or call for pick-up to reach the hotel.

The following map briefly illustrates the location of the hotel.



ATMAS TF/5
Appendix B to IP/01



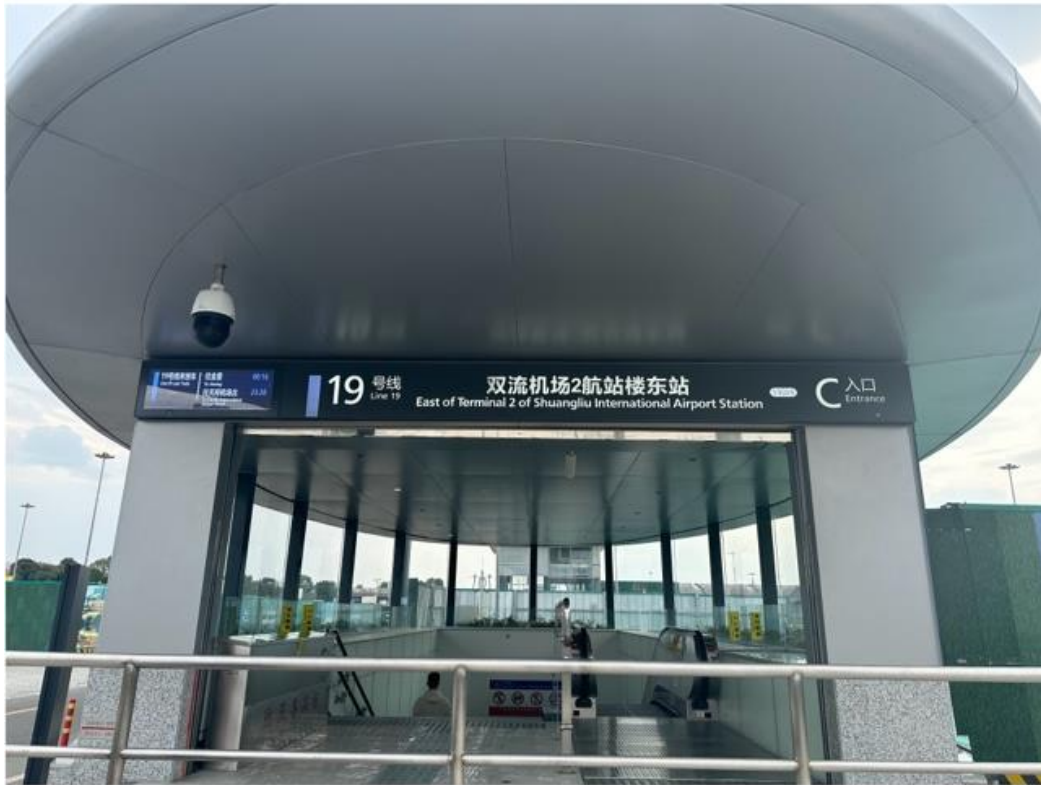
Taxi: The taxi station is outside Exit A of Terminal 2 of Shuangliu Airport.



**Pick Up : The hotel pick-up car is parked outside
Exit A of Terminal 2 of Shuangliu Airport.(Point 1/Point 2)**



**Metro: Terminal 2 of Shuangliu International Airport station
is 200m away from the airport.**



★ **The JoyHub Air Hotel (Meeting Venue)**



Hampton by Hilton Chengdu Shuangliu International Airport:
成都双流机场希尔顿欢朋酒店

Departure from **Shuangliu** International Airport :

Walk: Distance of 3KM, 40minutes

1999)

Departure from **Tianfu** International Airport :

Taxi: Distance of 70KM, 1 hour taxi ride, 250-300 CNY.

Metro&Pick-Up: Take Line 19 from Terminal 1&2 of Tianfu International Airport Station to East of Terminal 2 of Shuangliu International Airport Station, and walk for 40 minutes or call for pick-up to reach the hotel.

Departure to **Meeting Venue** (JoyHub Air Hotel) :

Walk: Distance of 2KM, 30 minutes.

Taxi: 10 minutes taxi ride, 20-50 CNY.

The following map briefly illustrates the location of the hotel.



ATMAS TF/5
Appendix B to IP/01

Holiday Inn Chengdu Airport:
成都机场假日酒店

Departure from **Shuangliu** International Airport :

Walk: Distance of 1.5KM, 25 minutes.

Pick-Up: Contact the hotel by phone in advance (free of charge).(Tel:+86 28 6228 9999)

Departure from **Tianfu** International Airport :

Taxi: Distance of 70KM, 1 hour taxi ride, 250-300 CNY.

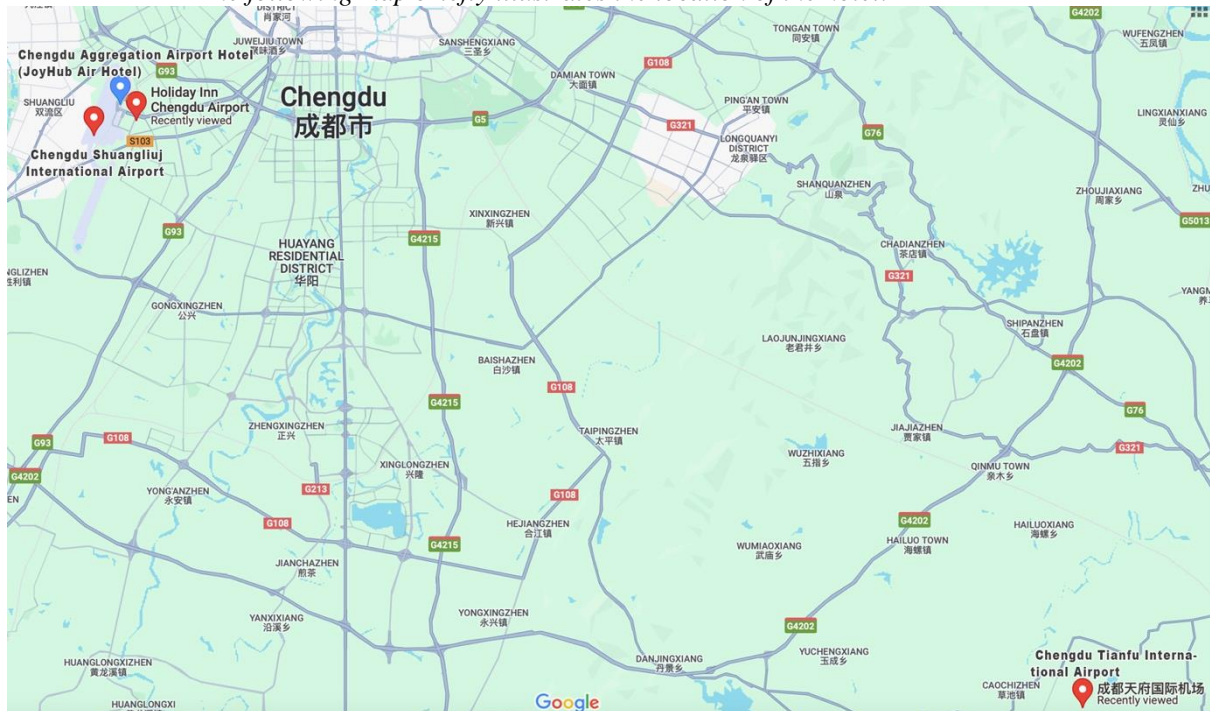
Metro&Pick-Up: Take Line 19 from Terminal 1&2 of Tianfu International Airport Station to East of Terminal 2 of Shuangliu International Airport Station, and walk for 25 minutes or call for pick-up to reach the hotel.

Departure to **Meeting Venue** (JoyHub Air Hotel) :

Walk: Distance of 1.5KM, 20 minutes.

Taxi: 8 minutes taxi ride, 20-50 CNY.

The following map briefly illustrates the location of the hotel.



Shangri-La Chengdu: 成都香格里拉大酒店

Departure from **Shuangliu** International Airport :

Taxi: Distance of 20KM, 45 minutes taxi ride, 80-100 CNY

Metro: Takes 1 hour. Take Line 10 from Terminal 2 of Shuangliu International Airport Station to Taipingyuan Station, then transfer to Line 3 and get off at Xinnanmen Station, then walk 1.3km for 20 minutes or take a taxi to the hotel.

Pick-Up: Contact the hotel by phone in advance (Pay 300-500 CNY).(Tel: +86 28 8888 9999)

Departure from **Tianfu** International Airport :

Taxi: Distance of 65KM, 1 hour taxi ride, 220-250 CNY

Metro: Takes 1 hour and 45 minutes. Take Line 18 from Terminal 1&2 of Tianfu International Airport Station to South Railway Station, then transfer to Line 1 to Tianfu Square Station, then transfer to Line 2 and get off at Dongmen Bridge Station, then walk 1.3km for 13 minutes to the hotel.

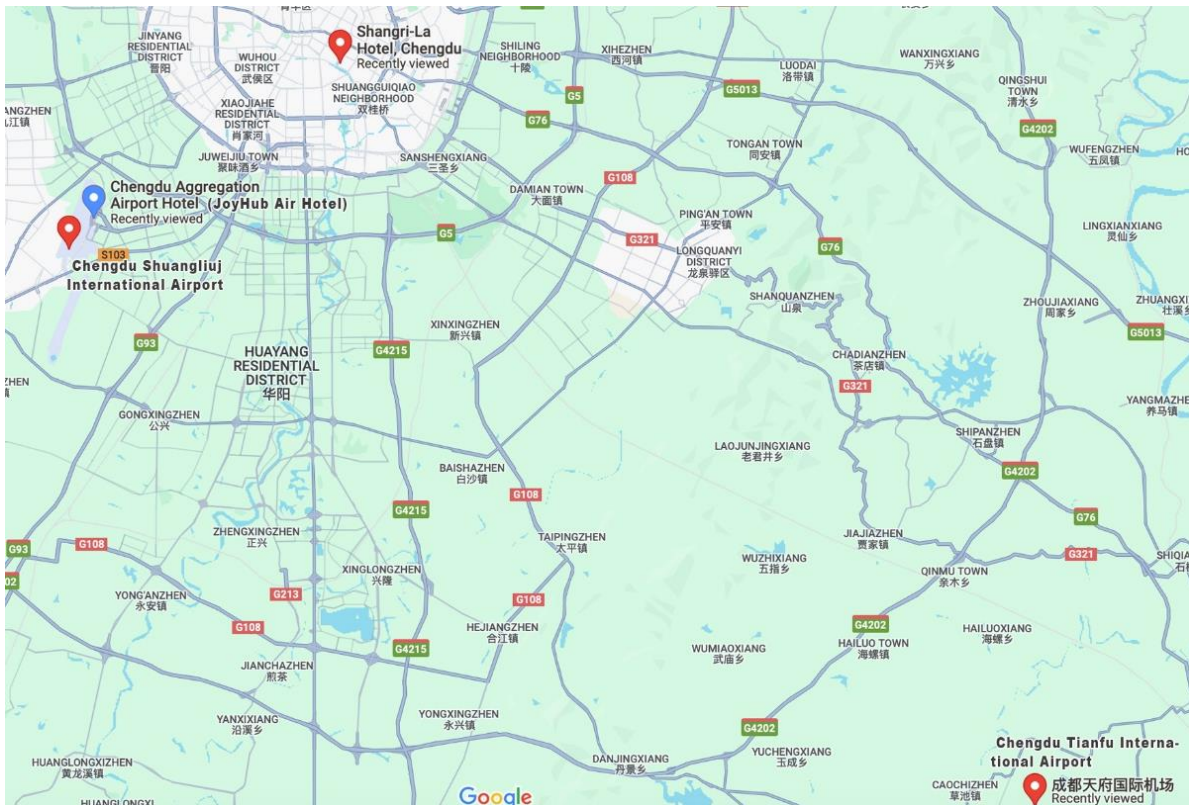
Pick-Up: Contact the hotel by phone in advance (Pay 1000-1200 CNY).(Tel: +86 28 8888 9999)

Departure to **Meeting Venue** (JoyHub Air Hotel) :

Taxi: Distance of 20KM, 45 minutes taxi ride, 80-100 CNY

Metro: Takes 1 hour and 10 minutes. Walk 19 minutes to Xinnanmen Station, take Line 3 to Taipingyuan Station, then transfer to Line 10 to Terminal 1 of Shuangliu International Airport Station, walk 800m for 12 minutes to JoyHub Air Hotel.

The following map briefly illustrates the location of the hotel.



Sheraton Chengdu Lido Hotel:
成都天府丽都喜来登饭店

Departure from **Shuangliu International Airport** :

Taxi: Distance of 20KM, 45 minutes taxi ride, 80-100 CNY

Metro: Takes 50 minutes. Take Line 10 from Terminal 2 of Shuangliu International Airport Station to Taipingyuan Station, then transfer to Line 3 and get off at Station, then transfer to Line 1 and get off at Luomashi Station, then walk 300m for 5 minutes to the hotel.

Pick-Up: Contact the hotel by phone in advance (Pay 200-300 CNY).(Tel: +86 28 8676 8999)

Departure from **Tianfu International Airport** :

Taxi: Distance of 70KM, 1 hour taxi ride, 230-260 CNY

Metro: Takes 1 hour and 15 minutes. Take Line 18 from Terminal 1&2 of Tianfu International Airport Station to South Railway Station, then transfer to Line 1 and get off at Luomashi Station, then walk 300m for 5 minutes to the hotel.

Pick-Up: Contact the hotel by phone in advance (Pay 600-700 CNY). (Tel: +86 28 8676 8999)

Departure to **Meeting Venue** (JoyHub Air Hotel) :

Taxi: Distance of 20KM, 45 minutes taxi ride, 80-100 CNY

Metro: Takes 1 hour. Walk 5 minutes to Luomashi Station, take Line 1 to Sichuan Gymnasium Station, then transfer to Line 3 to Taipingyuan Station, then transfer to Line 10 and get off at Terminal 1 of Shuangliu International Airport Station, walk 800m for 12 minutes to JoyHub Air Hotel.

The following map briefly illustrates the location of the hotel.



Car hailing service: All the above hotels can provide Car hailing service, Please make an appointment in advance.