



ICAO

International Civil Aviation Organization

The Second Meeting of the South Asia, Indian Ocean and
Southeast Asia ATM Coordination Group (SAIOSEACG/2)

Bangkok, Thailand, 20 – 24 March 2023

Agenda Item 4: Review of Current Operations and Problem Areas

APPLICATION OF ATC SEPARATION MINIMUMS

(Presented by Secretariat)

SUMMARY

This paper presents information on the Seamless ANS survey conducted to determine which Air Traffic Control (ATC) separation minimums were being applied within the Asia/Pacific Region.

1. INTRODUCTION

1.1 In an endeavour to track the effectiveness of the Seamless Air Navigation Services (ANS) element implementation related to the use of tactical (ATC surveillance-based and datalink-supported) ATC separation minimums, the ICAO Regional Office issued State Letters since 2017 subsequently supported by Conclusion ATM/SG 6-1: ATC Separations Standards Survey. On 27 January 2023, another state letter T 3/10.1 – AP019/23 (ATM), with a response date of 03 March 2023 (**Attachment A**) was sent to States to submit the survey.

1.2 The survey requested respondents to advise the minimum horizontal separation minimums authorized for use by controllers within Category R (remote), Category T (terminal operations serviced by direct ATS communications and surveillance) and Category S (surveilled by radar, Automatic Dependent Surveillance-Broadcast [ADS-B] or Multilateration [MLAT]), and the minimum horizontal spacing authorized by Air Traffic Services Letter of Agreement (ATS LOA) or other instruments on each of your Flight Information Region (FIR) inbound transfer of Control (TOC) points. Surveying the TOC points' spacing parameter is a step forward in helping to identify the 'bottleneck' FIR Boundary TOC points in the region. In addition, it was asked whether your Administration applied a Flight Level Allocation Scheme within its FIR(s) [no closer than 50NM to the FIR boundary]. The survey is at **Attachment B**.

1.3 The specific parts from the *Asia/Pacific Seamless ANS Plan* being referred to in the survey were:

7.34 *All ATC units should authorise the use of the horizontal separation minima stated in ICAO Doc 4444 (PANS ATM), or as close to the separation minima as practicable, taking into account such factors as:*

the automation of the ATM system, including automated hand-off between sectors;

a) *the capability of the ATC communications system;*

b) *the performance of the ATS surveillance system, including data-sharing or overlapping coverage at TOC points; and*

- c) *ensuring the competency of air traffic controllers to apply the full tactical capability of ATS surveillance systems.*

Note 1: the delivery of ATC services should be based primarily on the CNS/ATM capability. When using Annex 10 compliant ATS surveillance, 5NM (enroute) or 3NM (terminal) surveillance-based separations should be authorised within ATC sectors. At the TOC points in such environments, 5-10NM should be authorised with auto hand-off and surveillance data-sharing or overlapping coverage at the TOC point, and 5-20NM without auto hand-off, as determined by an appropriate safety assessment.

Note 2: the efficacy, continuity and availability of ATM services should be supported by adherence with regional planning and guidance material regarding ATM automation and ATM contingency systems (regarding ATM contingency operations, refer to the Regional ATM Contingency Plan).

7.35 *Priority for FLAS level allocations should be given to higher density ATS routes over lower density ATS routes. FLAS should comply with Annex 2, Appendix 3a unless part of an OTS. FLAS other than OTS should only be utilised for safety and efficiency reasons within:*

- a) Category R *airspace with the agreement of all ANSPs that provide services:*

- *within the airspace concerned; and*
- *within adjacent airspace which is affected by the FLAS; or*

Category S *airspace with the agreement of all ANSPs that provide services:*

- *where crossing track conflicts occur within 50NM of the FIRB; and*
- *ATS surveillance coverage does not overlap the FIRB concerned, or ATS surveillance data is not exchanged between the ATC units concerned.*

2. DISCUSSION

Survey

2.1 The survey questions circulated were expected to provide greater clarity on the separation minimums used in the region. Q1 surveyed Remote, Surveillance and Terminal airspace separations within the airspace of APAC Administrations, Q2 captured the separation minimums for only inbound flights at FIR TOC points and Q3 covered FLAS.

2.2 The latest responses from Asia/Pacific Administrations to the latest survey are provided in **Attachment C** and **Attachment D**. The data in **Attachment C** shows the responses from Q1 & Q3 of the survey, the green text indicates compliance with the *Asia/Pacific Seamless ANS Plan*'s expectations, while red text represents non-compliance. Whereas **Attachment D** shows all reported inbound TOC points from Q2 and its compliance to the Seamless ANS Plan.

2.3 As of 06 March 2023, the number of responses to the latest survey has decreased from 21 to 18 (compared to last reporting period). **Table 1** presents the list of submission by States from 2017 to 2023. Some States/Administrations did not submit any data since 2017.

State/Administration	2017	2018	2019	2020	2021	2022	2023
Afghanistan	Yes	Yes					
Australia	Yes	Yes	Yes	Yes	Yes	Yes	
Bangladesh						Yes	

State/Administration	2017	2018	2019	2020	2021	2022	2023
Bhutan			Yes				
Brunei Darussalam							
Cambodia	Yes	Yes	Yes	Yes		Yes	
China			Yes				
Cook Islands							Yes
DPR Korea							
Fiji	Yes	Yes	Yes			Yes	Yes
French Polynesia	Yes	Yes	Yes				
Hong Kong, China	Yes	Yes	Yes	Yes	Yes	Yes	Yes
India	Yes	Yes	Yes			Yes	Yes
Indonesia	Yes	Yes	Yes	Yes		Yes	Yes
Japan	Yes	Yes	Yes	Yes		Yes	Yes
Kiribati							
Lao PDR	Yes	Yes	Yes				
Macao, China				Yes	Yes	Yes	Yes
Malaysia			Yes		Yes	Yes	
Maldives			Yes		Yes	Yes	
Marshall Islands							
Micronesia							
Mongolia			Yes			Yes	Yes
Myanmar			Yes			Yes	
Nauru							
Nepal					Yes	Yes	Yes
New Caledonia							
New Zealand	Yes	Yes	Yes				Yes
Pakistan	Yes	Yes	Yes		Yes	Yes	Yes
Palau							
Papua New Guinea	Yes	Yes	Yes	Yes			
Philippines	Yes	Yes	Yes	Yes	Yes	Yes	Yes
Republic of Korea	Yes	Yes	Yes	Yes	Yes	Yes	Yes
Samoa							
Singapore	Yes	Yes	Yes	Yes	Yes	Yes	Yes
Solomon Islands							
Sri Lanka	Yes	Yes	Yes	Yes	Yes	Yes	Yes
Thailand	Yes	Yes	Yes	Yes	Yes	Yes	Yes
Timor Leste							
Tonga			Yes				
Tuvalu							
USA	Yes	Yes	Yes	Yes	Yes	Yes	Yes
Vanuatu							
Viet Nam			Yes	Yes	Yes	Yes	Yes

Table 1: Responses for ATC separation survey, 2017- 2023

2.4 States and Administrations that did not respond as at 06 March 2023 were as follows:

Afghanistan, Australia, Bangladesh, Bhutan, Brunei Darussalam, Cambodia, China, DPR Korea, French Polynesia, Kiribati, Lao PDR, Malaysia, Maldives, Marshall Islands, Micronesia (Federated State of), Nauru, New Caledonia, Palau, Papua New Guinea, Samoa, Solomon Islands, Timor-Leste, Tonga, Tuvalu and Vanuatu.

Analysis

2.5 The analysis of Q1 of the survey are presented separately for the three categories of airspaces namely Category R, Category S and Category T in **Figure 1**, **Figure 2** and **Figure 3** respectively. The figures provide an indication, as at 06 March 2023, of the efficiency of ATC spacing between aircraft at the same level as it is theoretically being applied within FIRs. The criteria used the analysis of Q1 are as follows:

- Category R - Acceptable standard: ≤ 50 NM
- Category S - Acceptable standard: 5 NM
- Category T - Acceptable standard: 5 NM

DISCLAIMER: The presentation of material in this paper does not imply the expression of any opinion whatsoever on the part of ICAO, APANPIRG, the ATM Sub-Group of APANPIRG or its contributing bodies concerning the legal status of any country, territory, city or area of its authorities, or concerning the delimitation of its frontiers or boundaries.

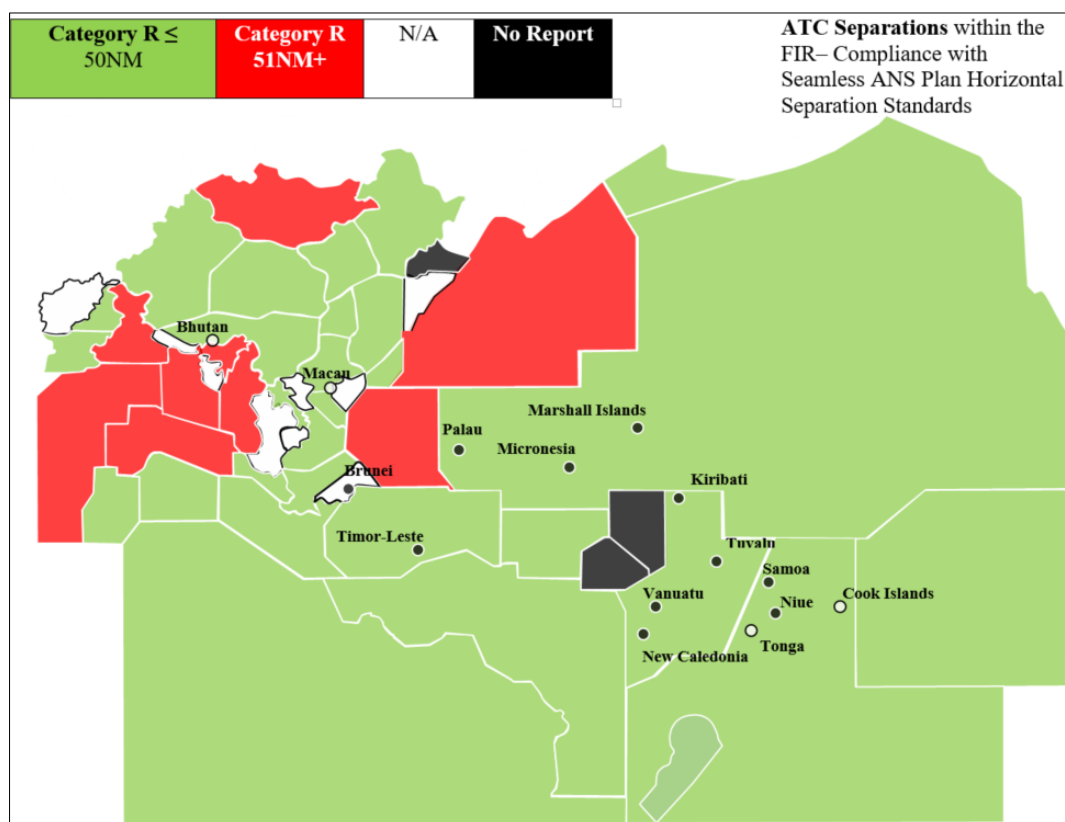


Figure 1: Category R Horizontal Separation Minimums within the FIR

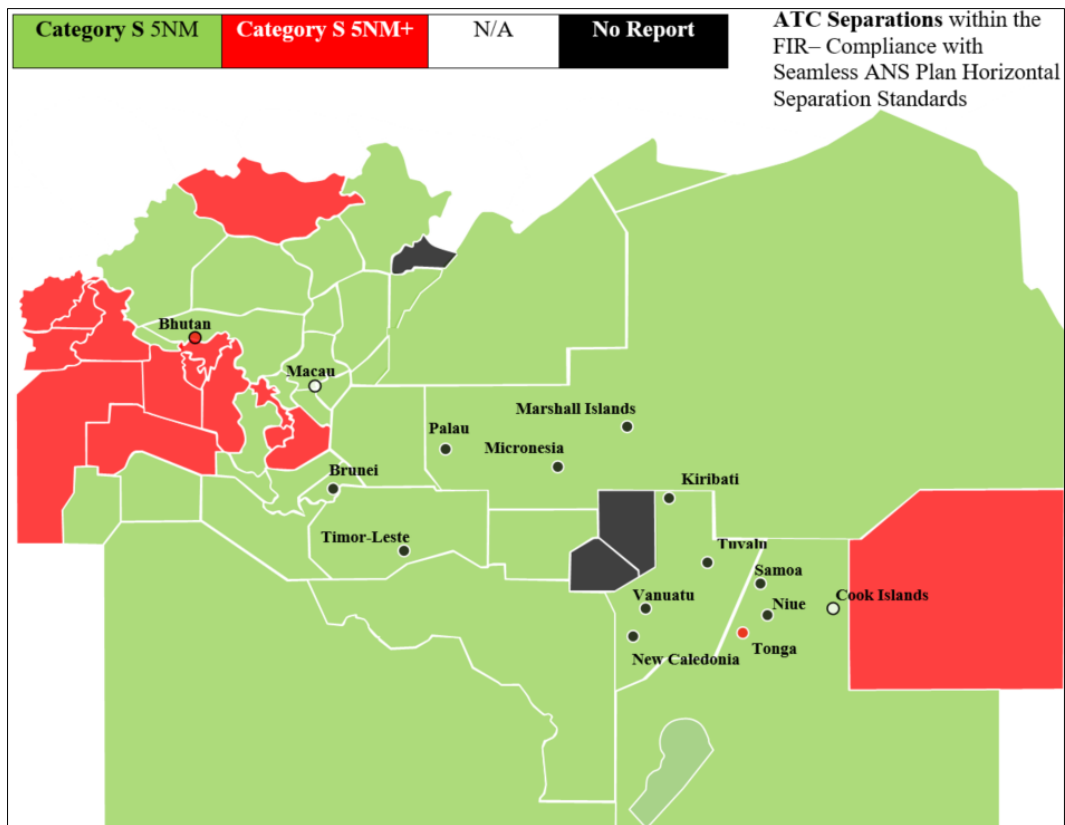


Figure 2: Category S Horizontal Separation Minimums within the FIR

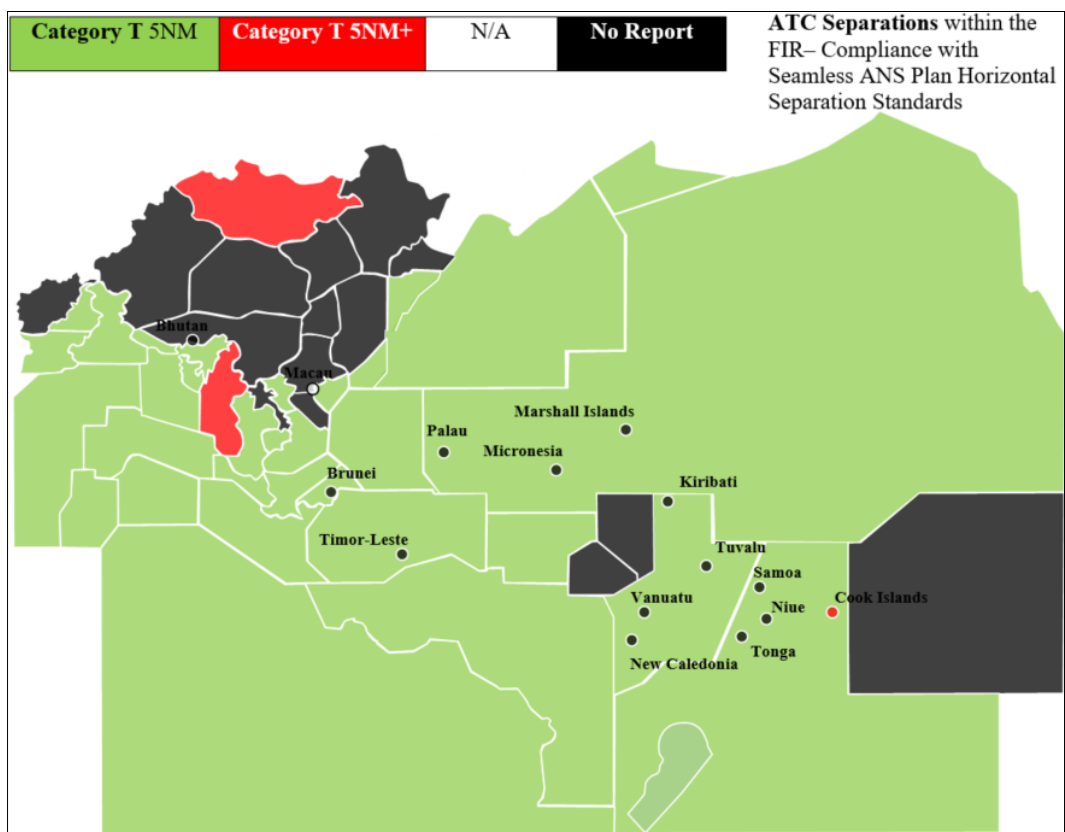


Figure 3: Category T Horizontal Separation Minimums within the FIR

2.6 Q1 requested the minimum horizontal separation standard within State/administration’s FIR namely Category R, Category S and Category T airspace. 30% (13 of 44) of APAC States and Administrations have all categories of airspace within the FIR with minimum separation compliant with the APAC Seamless ANS Plan.

2.7 States that utilize more than 5NM in Category S airspace:
Afghanistan, Bangladesh, Bhutan, Cambodia, French Polynesia, India, Lao PDR, Mongolia, Myanmar, Pakistan, Tonga, and Vietnam.

2.8 States that utilize more than 5NM in Category T airspace:
Cook Islands, Mongolia and Myanmar

2.9 Q2 of the survey looked at three of categories of separations at Inbound FIR TOC points shown below and the total number of TOC points surveyed this year. After a review, the criteria for Category R→ S TOC has been revised from 10 NM to 50NM. The analysis of Q2 of the survey are presented separately for the three categories in **Figure 4**, **Figure 5** and **Figure 6** respectively.

Q2 Criteria

- Category R/S → R TOC- Acceptable standard: ≤ 50 NM
- Category R → S TOC - Acceptable standard: ≤ 50 NM
- Category S → S TOC - Acceptable standard: ≤ 10 NM

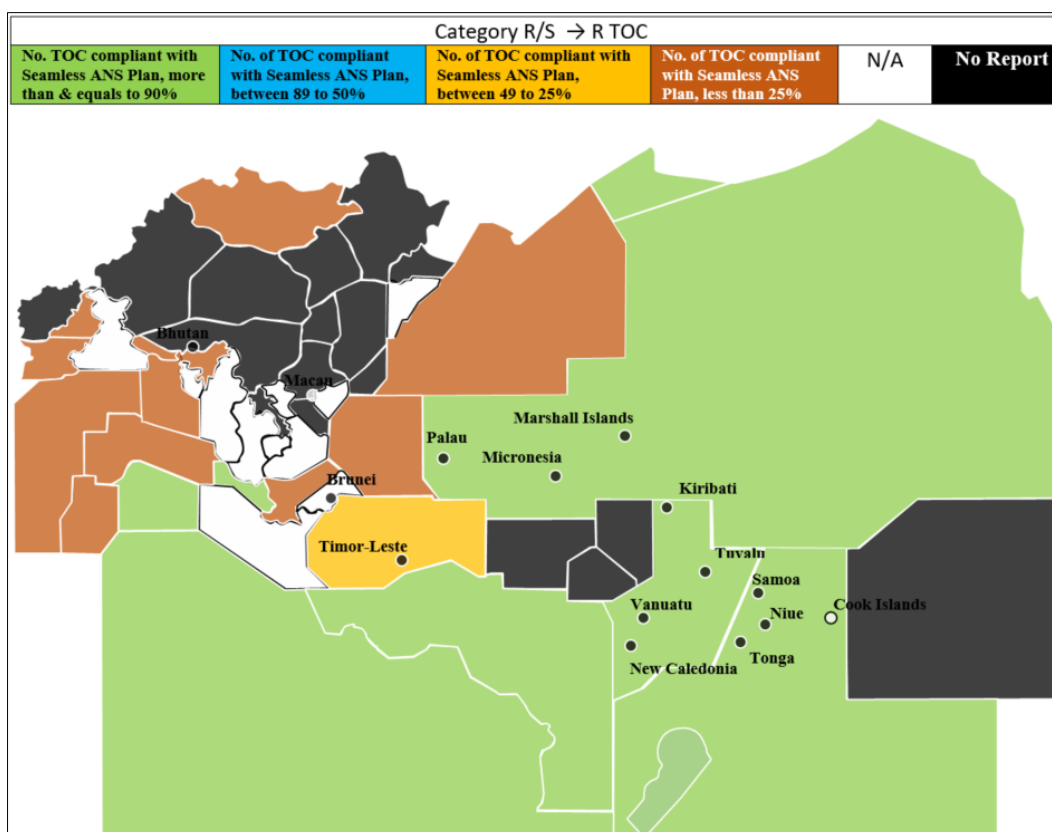


Figure 4: Category R/S → R TOC ATC Horizontal Spacing at Inbound FIR TOC points

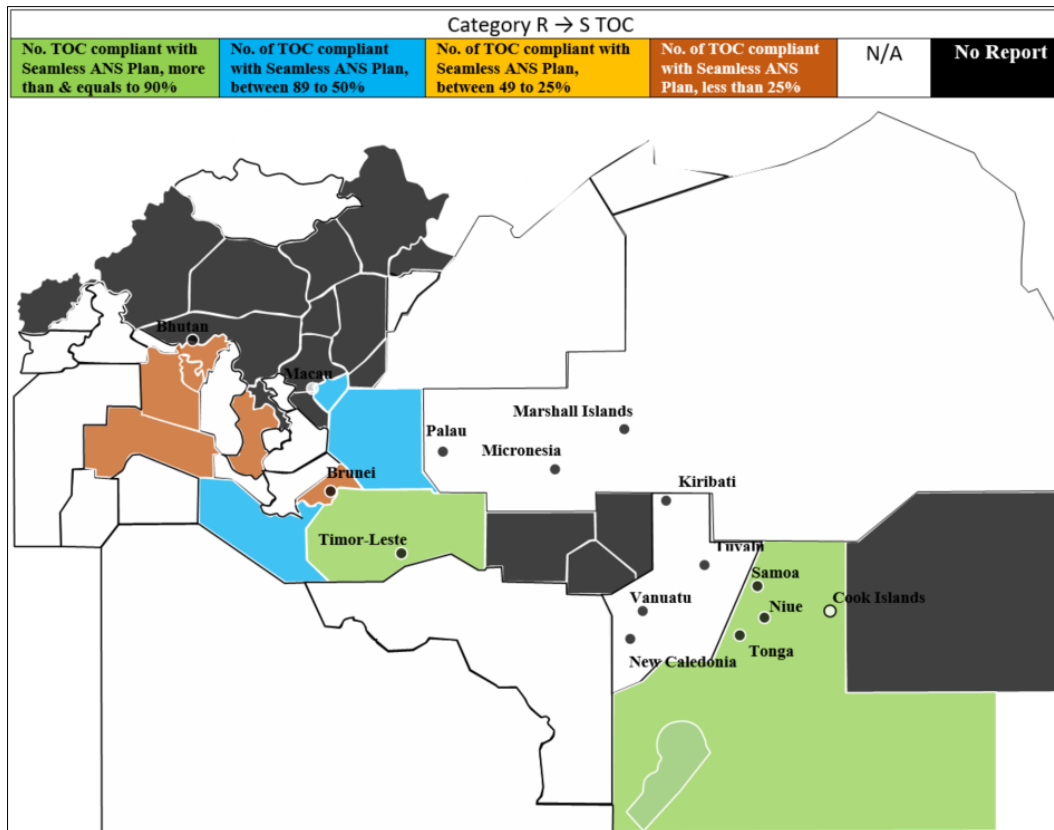


Figure 5: Category R → S TOC ATC Horizontal Spacing at Inbound FIR TOC points

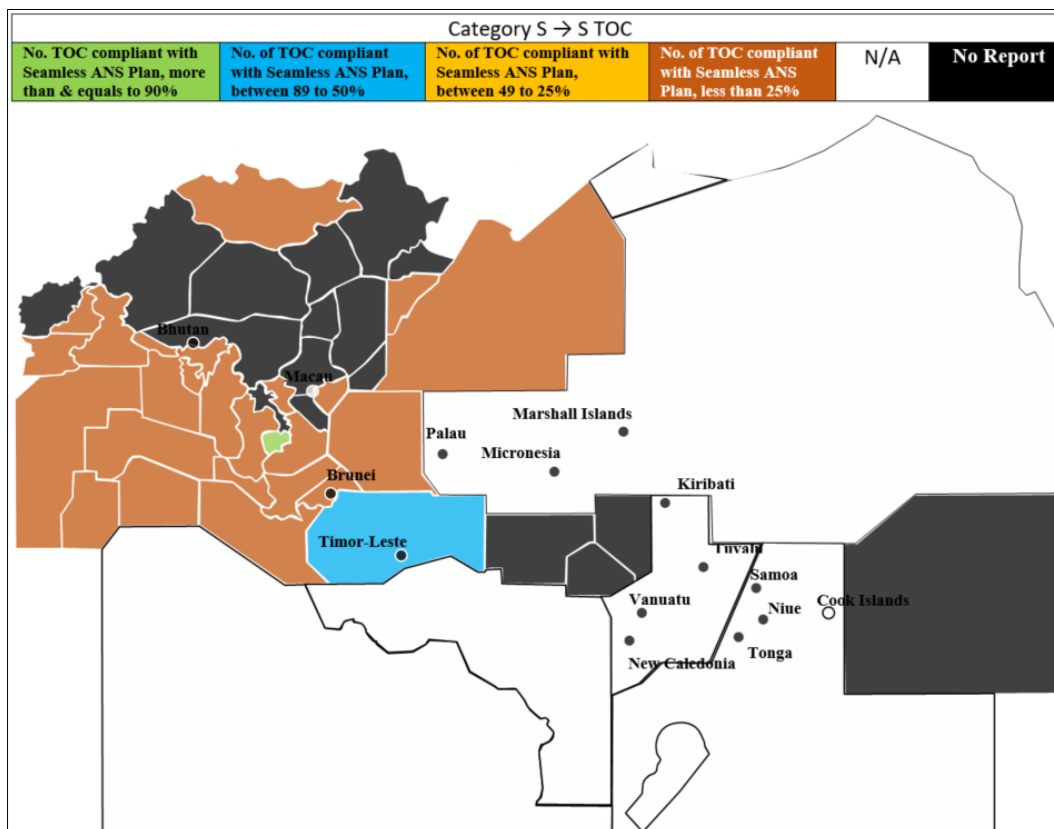


Figure 6: Category S → S TOC ATC Horizontal Spacing at Inbound FIR TOC points

2.10 Only five States/administrations achieved more than or equals to 90% of the total Inbound FIR TOC points compliant with the Seamless ANS plan for all applicable categories.

Australia, Cambodia, Fiji, New Zealand, United States

2.11 The further analysis of the compliance of the three categories of inbound TOC by States is shown in **Figure 7**.

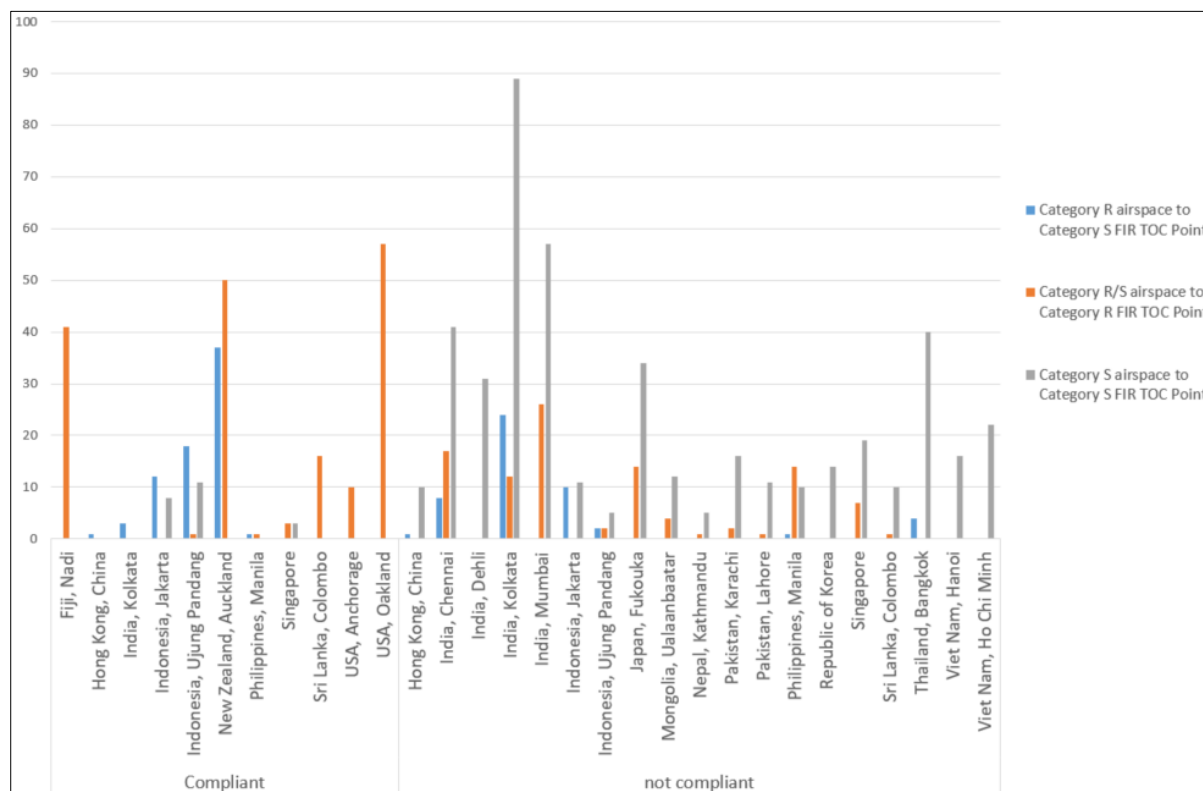


Figure 7: Analysis of Inbound TOC categories by Administration, February 2023

2.12 **Table 2** showed the comparison of Inbound TOC points, there are 179 in Category R/S airspace to Category S FIR TOC Point has the highest rate of compliance in APAC region whereas for the non-compliant TOC points, there were 453 in Category S airspace to Category S FIR TOC Points. Even with surveillance coverage, the separation minimum of more than 10NM are currently implemented at TOC points in the APAC region.

	Number of Category R airspace to Category S FIR TOC Point	Number of Category R/S airspace to Category R FIR TOC Point	Number of Category S airspace to Category S FIR TOC Point	Total
Compliant	72	179	22	273
Not compliant	50	101	453	604
Total	122	280	475	877

Table 2: Comparison of compliance of inbound TOC points

Conclusions

2.13 ICAO’s latest analyses reveal that air transport seat capacity and passenger totals globally have reached an estimated 80% of pre-pandemic levels, with passenger revenue at around 72% of its 2019 high point. The number of air passengers carried from January to August of this year increased by an estimated 55% compared to the same period in 2021. ICAO urges all APAC States and Administrations to address this key aspect of capacity and efficiency within their National Air Navigation Plans.

2.14 The ICAO Regional Office (and from a global perspective, ICAO HQ) also has a role in educating States about the human performance aspects that act as barriers to implementation of more efficient horizontal separations and aircraft spacing at TOC points, particularly those contained within the Asia/Pacific Seamless ANS Plan, E.g.: human performance-based training and procedures for operational staff providing ATS, including the application of tactical, surveillance-based ATC separation and control techniques near minimum ATC separation.

3. ACTION BY THE MEETING

3.1 The meeting is invited to:

- a) note the information contained in this paper;
- b) urge all Administrations that have not done so to implement separation minimums to improve ATC service levels and update their ATS LOAs to meet the expectations of the *Asia/Pacific Seamless ANS Plan*; and
- c) discuss any relevant matters as appropriate.

.....



International
Civil Aviation
Organization

Organisation
de l'aviation civile
internationale

Organización
de Aviación Civil
Internacional

Международная
организация
гражданской
авиации

منظمة الطيران
المدني الدولي

国际民用
航空组织

Reference: T 3/10.1 – AP019/23 (ATM)

27 January 2023

Subject: **Annual ATC Separation Standards Survey**

Action required: To complete the survey and reply no later than **03 March 2023**

Sir/Madam,

I wish to draw your attention to the outcomes of the Ninth Meeting of the Air Traffic Management Sub-Group of APANPIRG (ATM/SG/9, 01 – 05 November 2021) relating to a revised annual ATC Separation Standards survey. The original survey was initiated by the ICAO APAC Regional Office in January 2017 and has been analyzed at all subsequent meetings of the ATM/SG. It provides the means for ATM/SG, APANPIRG and the ICAO Regional Office to gauge and encourage the regional implementation of separation minimums provided in ICAO Doc 4444 *Procedures for Air Navigation Services – Air Traffic Management* (PANS-ATM), as expected by APANPIRG in accordance with the performance objectives of the *Asia/Pacific Seamless ANS Plan*.

Guidance material to assist States in the interpretation of the survey is provided in **Attachment A**. With regard to the spacing applied at Transfer of Control (TOC) points, States are reminded that this relates only to inbound flights at Flight Information Region (FIR) TOC points.

Accordingly, States are urged to submit their completed ATC Separation Standards Survey (**Attachment B**) to the ICAO Asia/Pacific Regional Office (apac@icao.int) by **no later than 03 March 2023**.

Yours sincerely,

for Tao Ma
Regional Director

Enclosures:

A – Guidance Material

B – ATC Separation Standards Survey

Asia and Pacific Office
252/1 Vibhavadi Rangsit Road
Chatuchak
Bangkok 10900
Thailand

Postal Address:
P.O. Box 11
Samyaek Ladprao
Bangkok 10901
Thailand

Tel.: +66 (2) 537-8189
Fax: +66 (2) 537-8199

www.icao.int/apac
E-mail: apac@icao.int

Guidance Material

Why is the survey necessary (including benefits if known)?

In general, some APAC Administrations were not applying ATC standards as provided in ICAO Doc 4444 – *Procedures for Air Navigation Services (PANS-ATM)*, opting instead to use larger, less efficient separations. The application of these larger separations not only affects airspace capacity and efficiency, but also affects safety due to the increased ATC workload in managing larger spacing, and more conflicts. Effectively, these States have not optimized service levels in line with PANS-ATM, the *Asia/Pacific Seamless ANS Plan*, and the capability of contemporary ATM systems

The Ninth Meeting of the APANPIRG ATM Sub-Group (ATM/SG/9, Video Teleconference, 01 – 05 November 2021) had been concerned that less than 30% of administrations had responded to the 2021 survey of ATC separation standards.

Who is affected by the survey?

The survey applies to all Asia/Pacific Administrations that have an Air Traffic Control (ATC) unit providing area (en-route) or approach control services.

What needs to be done?

State regulators should determine what horizontal separation standards are approved and/or applied in coordination with the Air Navigation Service Provider (ANSP), and in accordance with the survey attached to the State Letter. The horizontal separations include those within Category R (remote), Category S (surveilled by radar, Automatic Dependent Surveillance-Broadcast [ADS-B] or Multilateration [MLAT]) and Category T (terminal operations serviced by direct ATS communications and surveillance). Once the data is assembled to answer the survey, it should be transmitted to the ICAO Regional Office as detailed in the State Letter.

When responding to the question on spacing applied at FIR boundary Transfer of Control (TOC) points, information should be provided on the spacing at *inbound* TOC points only.

Who do you contact if you have more questions, or if you would like to offer assistance to other States on this matter?

Contact (in order of precedence):

1. Mr. Shane Sumner, Regional Officer ATM (ssumner@icao.int); or
2. ICAO Asia/Pacific Regional Office, attention ATM Section (apac@icao.int).

.....

Instructions: For each FIR administered by your State or Administration, complete the survey below:

Q1: Noting the categorization of airspace in the Asia/Pacific Seamless ANS Plan paragraph 1.4 and the performance expectation in paragraph 7.34 (link provided below) what minimum horizontal separation standard has been authorized for controllers to use within your Category R, Category S and Category T airspace?

Category R (remote) airspace: NM

Category S (surveillance) airspace: NM

Category T (terminal) airspace (international airports): NM

Remarks:

Q2: What minimum horizontal spacing has been authorized by Air Traffic Services Letter of Agreement (ATS LOA) or other instrument on each of your Flight Information Region (FIR) inbound transfer of Control (TOC) points?

Please fill in the table in Sheet 2. Example as shown:

S/No.	TOC Points	ATS Routes	Category of Airspace to FIR TOC Point (Inbound only)	Minimum horizontal separation standard	Inbound Transferring FIR	Remarks/Route Restrictions
01	ARAMA	A464	Category S airspace to Category S FIR TOC Point	10nm	Kuala Lumpur	
02	AKMON	M768	Category R/S airspace to Category R FIR TOC Point	10 minutes MNT	Ho Chi Minh / Kota Kinabalu	
03	TEGID	M767	Category R/S airspace to Category R FIR TOC Point	50nm	Manila	Based on RNP10 operations

(Note: This question only applies to inbound flights entering the FIRs. If for example your State applies 10NM inbound at the TOC point and the neighbouring State applies 30NM, then respond '10NM').

Remarks:

Q3: Noting the expectations of the Asia/Pacific Seamless ANS Plan paragraph 7.35 (link below), does your Administration apply a Flight Level Allocation Scheme within its FIR(s) [no closer than 50NM to the FIR boundary]?

If so, please provide details.

YES / NO

Details/Remarks:

The Asia/Pacific Seamless ANS Plan and this survey form (in MS Excel format for ease of use) are available on the ICAO Asia/Pacific Regional Office eDocuments web-page (ATM Section, Seamless ANS Plan Sub-Section, <https://www.icao.int/APAC/Pages/eDocs.aspx>)

States/Administration	Q1: Minimum horizontal separation standard			Q3: FLAS	FLAS remarks
	Expected standard: ≤ 50 NM	Expected standard: 5 NM	Expected standard: 5 NM	Expected standard: No	
	Category R Horizontal Separation	Category S Horizontal Separation	Category T Horizontal Separation	FLAS	
Afghanistan	N/A	50 NM	No Report	Yes	
Australia	30 NM	5 NM	3 NM	No	
Bangladesh	N/A	50 NM/10 mins	5NM	Yes	
Bhutan	N/A	50 NM	No Report	No Report	
Brunei Darussalam	No Report	No Report	No Report	No Report	
Cambodia	N/A	10 NM	5NM	Yes	
China	30NM	5 NM	No Report	Yes	
Cook Islands	N/A	N/A	10-20 NM	No	
DPR Korea	No Report	No Report	No Report	No Report	
Fiji	30 NM	5NM	5NM	No	Fiji does not apply the FLAS level allocation which indicated in para 7.35 of the Asia/Pacific Seamless ANS Plan. However Fiji still applies the requirements prescribed in Annex 2 appendix 3a without any prioritising high density ATS routes.
French Polynesia	30 NM	10-20 NM	No Report	No	
Hong Kong, China	N/A	5 NM	2.5/2.7/3/5 NM	No	While FLAS is applied at the FIR boundary, it does not apply within Hong Kong FIR.
India (Delhi)	50 NM - 10 mins	5 - 10 NM	3 - 5 NM	No	No FLAS is applicable within DELHI FIR or adjacent INDIAN FIRS.
India (Mumbai)	50 NM - 10 mins	5 - 10 NM	3 - 5 NM	Yes	The only FLAS applicable is FL330 with SANA'A, MOGADISHU and Seychelles. (FLAS not applicable with MOGADISHU and Seychelles for ADS-C/ CPDLC equipped aircraft.) (FLAS is not applicable for FLT entering Mumbai Oceanic Airspace after time 0530 and exiting Mumbai Oceanic Airspace by time 1330 UTC).
India (Kolkata)	50 NM - 10 mins	5 - 10 NM	3 - 5 NM	Yes	FLAS is applicable Over Bay of Bengal, on the following routes: N877, P628, L759, P646, L507 , L301, N895 and M770. FLAS is applicable Over continental airspace, on the following routes: A791 (CEA VOR to TASOP) and N877 (V2Z- NNP- PRA- TASOP)
India (Chennai)	50 NM - 10 mins	5 - 10 NM	3 - 5 NM	No	No FLAS is applicable within Chennai FIR or adjacent INDIAN FIRS.
Indonesia (Jakarta)	50NM	5NM	5NM	No	NO , Jakarta FIR not implemented Flight Level Allocation Scheme , but our adjacent especially in South China Sea area has implemented FLAS/FLOS so we have to implement FLAS/FLOS before entering adjacent boundary considering implementation FLAS/FLOS on its FIR
Indonesia (Ujung Pandang)	50NM	5NM	5NM	No	
Japan	10 minutes	5NM	3NM	No	
Kiribati	No Report	No Report	No Report	No Report	
Lao PDR	10 NM	10 NM	No Report	Yes	
Macao, China	N/A	N/A	N/A	N/A	
Malaysia (Kota Kinabalu)	N/A	5 NM	5 NM	Yes	
Malaysia (Kuala Lumpur)	50 NM	5 NM	3 NM	No	
Maldives	50 NM	5 NM	5 NM	No	
Marshall Islands	No Report	No Report	No Report	No Report	
Micronesia	No Report	No Report	No Report	No Report	
Mongolia	10 minutes	30KM	20KM	No	
Myanmar	80NM/10 mins MNT	80 - 50NM	20NM	Yes	
Nauru	No Report	No Report	No Report	No Report	
Nepal	N/A	5 NM	5 NM	Yes	
New Caledonia	No Report	No Report	No Report	No Report	
New Zealand	30 NM	5 NM	3 NM	No	There is no flight level allocation scheme within the NZZO and NZCC FIR as we adhere to our table of cruising levels, any IFR aircraft track from 270 to 089 MAG the altitude or flight level must be odd e.g. A110, F130, F150. Any IFR aircraft track from 090 to 269 MAG the altitude or flight level must be even e.g. A120 F160 F180.
Pakistan (Lahore FIR)	50 NM	15 NM	5 NM	Yes	Provision of ATFM For BOBCAT (Bay of Bengal Cooperative ATFM System) slot allocation on the following ATS Routes for flights transiting through Kabul FIR between time 2000 UTC to 2359 UTC:- a. ATS Route P628 TOC Point ASLUM (Lahore FIR) b. ATS Route L750 TOC Point BIROS (Lahore FIR) c. ATS Route N644 TOC Point DOBAT (Lahore FIR) d. ATS Route M875 TOC Point SITAX (Lahore FIR) e. ATS Route L509 TOC Point LAJAK (Lahore FIR)
Pakistan (Karachi FIR)	50 NM	15 NM	5 NM	Yes	Provision of ATFM For BOBCAT (Bay of Bengal Cooperative ATFM System) slot allocation on the following ATS Route for flights transiting through Kabul FIR between time 2000 UTC to 2359 UTC:- a. ATS Route N636 TOC Point SERKA (Karachi FIR)
Palau	No Report	No Report	No Report	No Report	
Papua New Guinea	30NM	5NM	5NM	No	
Philippines	80NM/10 mins MNT	5 NM	5 NM	Yes	
Republic of Korea	N/A	5NM	3NM	No	FLAS within Incheon FIR(RKRR) is operated in the area closer than 50NM from the FIR boundary.
Samoa	No Report	No Report	No Report	No Report	

Singapore	30 NM	5 NM	3 NM	Yes	The following flight level arrangements are applicable for flights entering and leaving the Western Pacific/South China Sea area: <ul style="list-style-type: none"> • Single alternate Flight Level Orientation Scheme (FLOS) [i.e. 'east odd flight levels, west even flight levels] in compliance with the Table "RVSM-FEET" of Appendix 3 of ICAO Annex 2 and in accordance with the FLOC in surrounding areas; • Special high capacity arrangements for six unidirectional parallel ATS routes (L642, M771, N892, L625, N884 and M767) that involve use of odd and even flight levels in the same direction of flight; and • An associated Flight Level Allocation Scheme (FLAS) agreed between affected ACCs to facilitate ATC 'No-PDC' operations.
Solomon Islands	No Report	No Report	No Report	No Report	
Sri Lanka	50 NM	5 NM	5 NM	Yes	As per the ICAO Table of Cruising Levels for RVSM Airspace
Thailand	N/A	5 NM	3- 5 NM	No	
Timor-Leste	No Report	No Report	No Report	No Report	
Tonga	N/A	25 NM	No Report	No	
Tuvalu	No Report	No Report	No Report	No Report	
United States (Anchorage Oceanic)	15 - 30 NM	5 NM	5 NM	Yes	There is no written FLAS for the Anchorage Oceanic FIR but controller training emphasizes airspace optimization. For example if 1 aircraft is crossing a route system with a heavy traffic flow, that aircraft would be required to cross the route system above or below the major traffic flow to optimized the overall service in the airspace. If the same aircraft was crossing the route system during a period of lighter traffic, the aircraft would not be required to avoid the primary altitudes of the route system.
United States (Oakland Oceanic)	15 - 30 NM	5 NM	3 NM	Yes	There is no written FLAS for the Oakland Oceanic FIR but controller training emphasizes airspace optimization. For example if 1 aircraft is crossing a route system with a heavy traffic flow, that aircraft would be required to cross the route system above or below the major traffic flow to optimized the overall service in the airspace. If the same aircraft was crossing the route system during a period of lighter traffic, the aircraft would not be required to avoid the primary altitudes of the route system.
Vanuatu	No Report	No Report	No Report	No Report	
Viet Nam (Ho Chi Minh FIR)	30 NM	10 NM	3 NM	Yes	Q1, Q2, W1, W2 G221, M765, N891, L628, G474, R588, R468, M755, M753, M505, N891, M510, R334, N892, N500, L625, L642, M771, M768, L644, B202
Viet Nam (Hanoi FIR)	N/A	5 NM	5 NM	Yes	A1; A202; A206; B214; B468; B465; R328; R335; R471; R474; G221; N639; W1; W2; Q1; Q2
States that responded for 2022 survey	48%				
States that responded for 2023 survey	41%				

S/No.	TOC Points	ATS Routes	Category of Airspace to FIR TOC Point (Inbound only)	Minimum horizontal separation standard	Inbound Transferring FIR	Remarks/Route Restrictions	Accepting FIR	Seamless ANS Plan compliance?
1	NOMAN	A461/M501	Category S airspace to Category S FIR TOC Point	30NM	Hong Kong	30NM spacing requires RNP4 and CPDLC	Philippines, Manila	not compliant
2	SABNO	A583	Category R/S airspace to Category R FIR TOC Point	50NM	Hong Kong	50NM spacing requires RNP10 and CPDLC	Philippines, Manila	Compliant
3	ARESI	L625	Category R/S airspace to Category R FIR TOC Point	80NM or 10 minutes MNT	HoChiMinh		Philippines, Manila	not compliant
4	ARESI	L628	Category R/S airspace to Category R FIR TOC Point	80NM or 10 minutes MNT	HoChiMinh		Philippines, Manila	not compliant
5	PANDI	M765	Category R/S airspace to Category R FIR TOC Point	80NM or 10 minutes MNT	HoChiMinh		Philippines, Manila	not compliant
6	LAXOR	N884	Category R airspace to Category S FIR TOC Point	30NM	Singapore	30NM spacing requires RNP4, ADS-C/CPDLC	Philippines, Manila	Compliant
7	LAXOR	M772	Category R/S airspace to Category R FIR TOC Point	80NM or 10 minutes MNT	Singapore		Philippines, Manila	not compliant
8	VINIK	M754	Category S airspace to Category S FIR TOC Point	80NM or 10 minutes MNT	Kota Kinabalu		Philippines, Manila	not compliant
9	OSANU	M646	Category S airspace to Category S FIR TOC Point	50NM	Kota Kinabalu	50NM spacing requires RNP10	Philippines, Manila	not compliant
10	VIMAG	A341	Category S airspace to Category S FIR TOC Point	50NM	Kota Kinabalu	50NM spacing requires RNP10	Philippines, Manila	not compliant
11	GORAI	G578	Category S airspace to Category S FIR TOC Point	50NM	Ujung Pandang	50NM spacing requires RNP10	Philippines, Manila	not compliant
12	MOLLY	A461	Category S airspace to Category S FIR TOC Point	50NM	Ujung Pandang	50NM spacing requires RNP10	Philippines, Manila	not compliant
13	SELSE	B472	Category S airspace to Category S FIR TOC Point	50NM	Ujung Pandang	50NM spacing requires RNP10	Philippines, Manila	not compliant
14	PEDNO	R590	Category S airspace to Category S FIR TOC Point	80NM or 10 minutes MNT	Ujung Pandang	50NM spacing not adopted due conflict with B472 inbound and A461 outbound	Philippines, Manila	not compliant
15	SADAN	B473	Category R/S airspace to Category R FIR TOC Point	80NM or 10 minutes MNT	Ujung Pandang		Philippines, Manila	not compliant
16	BIDOR	B462	Category R/S airspace to Category R FIR TOC Point	80NM or 10 minutes MNT	Ujung Pandang		Philippines, Manila	not compliant
17	BOLUG	A339	Category R/S airspace to Category R FIR TOC Point	80NM or 10 minutes MNT	Ujung Pandang		Philippines, Manila	not compliant
18	SHREE	A339	Category R/S airspace to Category R FIR TOC Point	80NM or 10 minutes MNT	Oakland		Philippines, Manila	not compliant
19	ISGOG	R337	Category R/S airspace to Category R FIR TOC Point	80NM or 10 minutes MNT	Oakland		Philippines, Manila	not compliant
20	ENDAX	G467	Category R/S airspace to Category R FIR TOC Point	80NM or 10 minutes MNT	Oakland		Philippines, Manila	not compliant
21	LIMLE	M501	Category R/S airspace to Category R FIR TOC Point	80NM or 10 minutes MNT	Oakland		Philippines, Manila	not compliant
22	GURAG	A590	Category R/S airspace to Category R FIR TOC Point	80NM or 10 minutes MNT	Fukuoka		Philippines, Manila	not compliant
23	GURAG	G578	Category R/S airspace to Category R FIR TOC Point	80NM or 10 minutes MNT	Fukuoka		Philippines, Manila	not compliant
24	BISIG	A582	Category R/S airspace to Category R FIR TOC Point	80NM or 10 minutes MNT	Fukuoka		Philippines, Manila	not compliant
25	MEVIN	B462	Category R airspace to Category S FIR TOC Point	80NM or 10 minutes MNT	Fukuoka		Philippines, Manila	not compliant
26	POTIB	M646	Category S airspace to Category S FIR TOC Point	30NM	Taipei	At least one aircraft in the pair will land in airport within Manila FIR or Taipei FIR	Philippines, Manila	not compliant
27	KABAM	N892	Category S airspace to Category S FIR TOC Point	80NM or 10 minutes MNT	Taipei		Philippines, Manila	not compliant
28	ALL	N/A UPRs	Category R/S airspace to Category R FIR TOC Point	30 NM	Anchorage Continental FIR	There are no routes that cross this FIR boundary. All aircraft are on User Preferred Random Routes	USA, Oakland	Compliant
29	ALL	N/A UPRs	Category R/S airspace to Category R FIR TOC Point	30 NM	Anchorage Oceanic FIR	There are no routes that cross this FIR boundary. All aircraft are on User Preferred Random Routes	USA, Oakland	Compliant
30	BEEBO	G223	Category R/S airspace to Category R FIR TOC Point	30 NM	Fukuoka Oceanic FIR		USA, Oakland	Compliant
31	ATIGO	B452	Category R/S airspace to Category R FIR TOC Point	30 NM	Fukuoka Oceanic FIR		USA, Oakland	Compliant
32	TEGOD	A337	Category R/S airspace to Category R FIR TOC Point	30 NM	Fukuoka Oceanic FIR		USA, Oakland	Compliant
33	OMLET	B586	Category R/S airspace to Category R FIR TOC Point	30 NM	Fukuoka Oceanic FIR		USA, Oakland	Compliant
34	MONPI	A597	Category R/S airspace to Category R FIR TOC Point	30 NM	Fukuoka Oceanic FIR		USA, Oakland	Compliant
35	PAKDO	G339	Category R/S airspace to Category R FIR TOC Point	30 NM	Fukuoka Oceanic FIR		USA, Oakland	Compliant
36	KEITH	A339, R584, R595	Category R/S airspace to Category R FIR TOC Point	30 NM	Fukuoka Oceanic FIR		USA, Oakland	Compliant
37	Random crossing Points	UPRs	Category R/S airspace to Category R FIR TOC Point	30 NM	Fukuoka Oceanic FIR	There are long segments of the FIR boundary without routes or waypoints on the boundary. Aircraft may flight plan optimized User Preferred Routes crossing the FIR with the 30 NM separation..	USA, Oakland	Compliant
38	LIMLE	M501	Category R/S airspace to Category R FIR TOC Point	30 NM	Manila FIR	Oakland Oceanic also accepts UPRs crossing the Manila FIR Boundary with the 30 NM separation.	USA, Oakland	Compliant
39	ENDAX	G467	Category R/S airspace to Category R FIR TOC Point	30 NM	Manila FIR	Oakland Oceanic also accepts UPRs crossing the Manila FIR Boundary	USA, Oakland	Compliant

S/No.	TOC Points	ATS Routes	Category of Airspace to FIR TOC Point (Inbound only)	Minimum horizontal separation standard	Inbound Transferring FIR	Remarks/Route Restrictions	Accepting FIR	Seamless ANS Plan compliance?
40	ISGOG	R337	Category R/S airspace to Category R FIR TOC Point	30 NM	Manila FIR	Oakland Oceanic also accepts UPRs crossing the Manila FIR Boundary with the 30 NM separation.	USA, Oakland	Compliant
41	OLBIE	M576	Category R/S airspace to Category R FIR TOC Point	30 NM	Manila FIR	Oakland Oceanic also accepts UPRs crossing the Manila FIR Boundary with the 30 NM separation.	USA, Oakland	Compliant
42	SHREE	A339, R584, R595	Category R/S airspace to Category R FIR TOC Point	30 NM	Manila FIR	Oakland Oceanic also accepts UPRs crossing the Manila FIR Boundary with the 30 NM separation.	USA, Oakland	Compliant
43	CAHYO	A450	Category R/S airspace to Category R FIR TOC Point	30 NM	Ujung Pandang FIR	Oakland Oceanic also accepts UPRs crossing the Ujung Pandang FIR Boundary with the 30 NM separation.	USA, Oakland	Compliant
44	KALIN	R204	Category R/S airspace to Category R FIR TOC Point	30 NM	Port Moresby FIR	Oakland Oceanic also accepts UPRs crossing the Port Moresby FIR Boundary with the 30 NM separation.	USA, Oakland	Compliant
45	FACED	A216	Category R/S airspace to Category R FIR TOC Point	30 NM	Port Moresby FIR	Oakland Oceanic also accepts UPRs crossing the Port Moresby FIR Boundary with the 30 NM separation.	USA, Oakland	Compliant
46	PIKOK	B586	Category R/S airspace to Category R FIR TOC Point	30 NM	Port Moresby FIR	Oakland Oceanic also accepts UPRs crossing the Port Moresby FIR Boundary with the 30 NM separation.	USA, Oakland	Compliant
47	RUTUS	G205	Category R/S airspace to Category R FIR TOC Point	30 NM	Port Moresby FIR	Oakland Oceanic also accepts UPRs crossing the Port Moresby FIR Boundary with the 30 NM separation.	USA, Oakland	Compliant
48	ADBN	A597	Category R/S airspace to Category R FIR TOC Point	30 NM	Port Moresby FIR	Oakland Oceanic also accepts UPRs crossing the Port Moresby FIR Boundary with the 30 NM separation.	USA, Oakland	Compliant
49	DOHRT	B452	Category R/S airspace to Category R FIR TOC Point	30 NM	Port Moresby FIR	Oakland Oceanic also accepts UPRs crossing the Port Moresby FIR Boundary with the 30 NM separation.	USA, Oakland	Compliant
50	FENSE	A578	Category R/S airspace to Category R FIR TOC Point	30 NM	Nauru FIR	Oakland Oceanic also accepts UPRs crossing the Nauru FIR Boundary with the 30 NM separation.	USA, Oakland	Compliant
51	MUBIT	G223	Category R/S airspace to Category R FIR TOC Point	30 NM	Nauru FIR	Oakland Oceanic also accepts UPRs crossing the Nauru FIR Boundary with the 30 NM separation.	USA, Oakland	Compliant
52	ELNUR	B589	Category R/S airspace to Category R FIR TOC Point	30 NM	Nauru FIR	Oakland Oceanic also accepts UPRs crossing the Nauru FIR Boundary with the 30 NM separation.	USA, Oakland	Compliant
53	MARTI	A598	Category R/S airspace to Category R FIR TOC Point	30 NM	Nauru FIR	Oakland Oceanic also accepts UPRs crossing the Nauru FIR Boundary with the 30 NM separation.	USA, Oakland	Compliant
54	VAVEE	R332	Category R/S airspace to Category R FIR TOC Point	30 NM	Nadi FIR	Oakland Oceanic also accepts UPRs crossing the Nadi FIR Boundary with the 30 NM separation.	USA, Oakland	Compliant
55	NIXAM	B326	Category R/S airspace to Category R FIR TOC Point	30 NM	Nadi FIR	Oakland Oceanic also accepts UPRs crossing the Nadi FIR Boundary with the 30 NM separation.	USA, Oakland	Compliant
56	ARTOP	B474	Category R/S airspace to Category R FIR TOC Point	30 NM	Nadi FIR	Oakland Oceanic also accepts UPRs crossing the Nadi FIR Boundary with the 30 NM separation.	USA, Oakland	Compliant
57	BOILS	B580	Category R/S airspace to Category R FIR TOC Point	30 NM	Nadi FIR	Oakland Oceanic also accepts UPRs crossing the Nadi FIR Boundary with the 30 NM separation.	USA, Oakland	Compliant
58	CUFFY	A579	Category R/S airspace to Category R FIR TOC Point	30 NM	Nadi FIR	Oakland Oceanic also accepts UPRs crossing the Nadi FIR Boundary with the 30 NM separation.	USA, Oakland	Compliant
59	DUNEY	G347	Category R/S airspace to Category R FIR TOC Point	30 NM	Auckland Oceanic FIR	Oakland Oceanic also accepts UPRs crossing the Auckland Oceanic FIR Boundary with the 30 NM separation.	USA, Oakland	Compliant
60	WOOPY	B581	Category R/S airspace to Category R FIR TOC Point	30 NM	Auckland Oceanic FIR	Oakland Oceanic also accepts UPRs crossing the Auckland Oceanic FIR Boundary with the 30 NM separation.	USA, Oakland	Compliant
61	ELMS	G457	Category R/S airspace to Category R FIR TOC Point	30 NM	Auckland Oceanic FIR	Oakland Oceanic also accepts UPRs crossing the Auckland Oceanic FIR Boundary with the 30 NM separation.	USA, Oakland	Compliant
62	PASSA	B577	Category R/S airspace to Category R FIR TOC Point	30 NM	Auckland Oceanic FIR	Oakland Oceanic also accepts UPRs crossing the Auckland Oceanic FIR Boundary with the 30 NM separation.	USA, Oakland	Compliant
63	RAMIZ	B596	Category R/S airspace to Category R FIR TOC Point	30 NM	Auckland Oceanic FIR	Oakland Oceanic also accepts UPRs crossing the Auckland Oceanic FIR Boundary with the 30 NM separation.	USA, Oakland	Compliant
64	TENOR	B595	Category R/S airspace to Category R FIR TOC Point	30 NM	Tahiti FIR	Oakland Oceanic also accepts UPRs crossing the Tahiti FIR Boundary with the 30 NM separation.	USA, Oakland	Compliant
65	BISOX	B200	Category R/S airspace to Category R FIR TOC Point	30 NM	Tahiti FIR	Oakland Oceanic also accepts UPRs crossing the Tahiti FIR Boundary with the 30 NM separation.	USA, Oakland	Compliant
66	UPNAR	B454	Category R/S airspace to Category R FIR TOC Point	30 NM	Tahiti FIR	Oakland Oceanic also accepts UPRs crossing the Tahiti FIR Boundary with the 30 NM separation.	USA, Oakland	Compliant
67	MAEVA	A220	Category R/S airspace to Category R FIR TOC Point	30 NM	Tahiti FIR	Oakland Oceanic also accepts UPRs crossing the Tahiti FIR Boundary with the 30 NM separation.	USA, Oakland	Compliant
68	WIBIG	G575	Category R/S airspace to Category R FIR TOC Point	30 NM	Tahiti FIR	Oakland Oceanic also accepts UPRs crossing the Tahiti FIR Boundary with the 30 NM separation.	USA, Oakland	Compliant

S/No.	TOC Points	ATS Routes	Category of Airspace to FIR TOC Point (Inbound only)	Minimum horizontal separation standard	Inbound Transferring FIR	Remarks/Route Restrictions	Accepting FIR	Seamless ANS Plan compliance?
69	Random crossing Points	UPRs	Category R/S airspace to Category R FIR TOC Point	30 NM	Mazatlan FIR	There are no routes that cross the Oakland/Mazatlan FIR boundary. Oakland Oceanic accepts UPRs crossing the FIR Boundary with the 30 NM separation.	USA, Oakland	Compliant
70	FICKY	R578,B581, B577,B200, B454,G575	Category R/S airspace to Category R FIR TOC Point	30 NM	Los Angeles FIR		USA, Oakland	Compliant
71	ELKEY	R577	Category R/S airspace to Category R FIR TOC Point	30 NM	Los Angeles FIR		USA, Oakland	Compliant
72	DINTY	R576	Category R/S airspace to Category R FIR TOC Point	30 NM	Los Angeles FIR		USA, Oakland	Compliant
73	AUDIA	R585	Category R/S airspace to Category R FIR TOC Point	30 NM	Los Angeles FIR		USA, Oakland	Compliant
74	MAFIC	A220	Category R/S airspace to Category R FIR TOC Point	30 NM	Oakland Domestic FIR		USA, Oakland	Compliant
75	CREAN	R465	Category R/S airspace to Category R FIR TOC Point	30 NM	Oakland Domestic FIR		USA, Oakland	Compliant
76	BAART	R464	Category R/S airspace to Category R FIR TOC Point	30 NM	Oakland Domestic FIR		USA, Oakland	Compliant
77	ALLBE	R463	Category R/S airspace to Category R FIR TOC Point	30 NM	Oakland Domestic FIR		USA, Oakland	Compliant
78	Random crossing Points	UPRs	Category R/S airspace to Category R FIR TOC Point	30 NM	Oakland Domestic FIR	There are many waypoints north of the CEP Routes where aircraft utilize UPRs and flexible tracks crossing the FIR. Oakland accepts the 30 NM minima for these UPRs and Flexible Tracks.	USA, Oakland	Compliant
79	Random crossing Points	UPRs	Category R/S airspace to Category R FIR TOC Point	30 NM	Seattle FIR	There are many waypoints on the Seattle FIR boundary where aircraft utilize UPRs and flexible tracks crossing the FIR. Oakland accepts the 30 NM minima for these UPRs and Flexible Tracks.	USA, Oakland	Compliant
80	HEMLO	A332	Category R/S airspace to Category R FIR TOC Point	30 NM	Seattle FIR		USA, Oakland	Compliant
81	SEDAR	A331	Category R/S airspace to Category R FIR TOC Point	30 NM	Seattle FIR		USA, Oakland	Compliant
82	KYLLE	B453	Category R/S airspace to Category R FIR TOC Point	30 NM	Seattle FIR		USA, Oakland	Compliant
83	KURTT	B453	Category R/S airspace to Category R FIR TOC Point	30 NM	Vancouver FIR		USA, Oakland	Compliant
84	Random crossing Points	UPRs	Category R/S airspace to Category R FIR TOC Point	30 NM	Vancouver FIR	There are many waypoints on the Vancouver FIR boundary where aircraft utilize UPRs and flexible tracks crossing the FIR. Oakland accepts the 30 NM minima for these UPRs and Flexible Tracks.	USA, Oakland	Compliant
85	PASRO	A590	Category R/S airspace to Category R FIR TOC Point	30 NM	Fukuoka Oceanic FIR		USA, Anchorage	Compliant
86	AKISU	UPRs	Category R/S airspace to Category R FIR TOC Point	30 NM	Fukuoka Oceanic FIR	There is no longer an ATS route over AKISU, ATS Route R591 was deleted to open more airspace for UPRs.	USA, Anchorage	Compliant
87	CUTEE	UPRs	Category R/S airspace to Category R FIR TOC Point	30 NM	Fukuoka Oceanic FIR	There is no longer an ATS route over CUTEE, ATS Route G344 was deleted to open more airspace for UPRs.	USA, Anchorage	Compliant
88	ALL	N/A UPRs	Category R/S airspace to Category R FIR TOC Point	30 NM	Oakland Oceanic FIR	There are no routes that cross this FIR boundary. All aircraft are on User Preferred Random Routes	USA, Anchorage	Compliant
89	AAMYY	R451	Category R/S airspace to Category R FIR TOC Point	30 NM	Anchorage Continental FIR	Waypoint AAMYY is close to the FIR Boundary but not on the FIR	USA, Anchorage	Compliant
90	PLADO	A590, G215	Category R/S airspace to Category R FIR TOC Point	30 NM	Anchorage Continental FIR	Waypoint PLADO is close to the FIR Boundary but not on the FIR	USA, Anchorage	Compliant
91	OPAKE	R580, A342	Category R/S airspace to Category R FIR TOC Point	30 NM	Anchorage Continental FIR		USA, Anchorage	Compliant
92	NYMPH	A342, G469	Category R/S airspace to Category R FIR TOC Point	30 NM	Anchorage Continental FIR	Waypoint NYMPH is close to the FIR Boundary but not on the FIR	USA, Anchorage	Compliant
93	KUNAD	No route in the Anchorage Oceanic FIR	Category R/S airspace to Category R FIR TOC Point	30 NM	Petropavlovsk Kamchatsky FIR	There are no routes that cross this FIR boundary. All aircraft are on User Preferred Random Routes after entering the Anchorage Oceanic FIR.	USA, Anchorage	Compliant
94	LUMES	No route in the Anchorage Oceanic FIR	Category R/S airspace to Category R FIR TOC Point	30 NM	Petropavlovsk Kamchatsky FIR	There are no routes that cross this FIR boundary. All aircraft are on User Preferred Random Routes after entering the Anchorage Oceanic FIR.	USA, Anchorage	Compliant
95	ADKOS	P753	Category R airspace to Category S FIR TOC Point	5NM	Auckland Oceanic FIR (NZZO)		New Zealand, Auckland	Compliant
96	LIBLA	P880	Category R airspace to Category S FIR TOC Point	5NM	Auckland Oceanic FIR (NZZO)		New Zealand, Auckland	Compliant
97	KABIN	L508	Category R airspace to Category S FIR TOC Point	5NM	Auckland Oceanic FIR (NZZO)		New Zealand, Auckland	Compliant
98	VANDA	N750	Category R airspace to Category S FIR TOC Point	5NM	Auckland Oceanic FIR (NZZO)		New Zealand, Auckland	Compliant
99	KABKA	L503	Category R airspace to Category S FIR TOC Point	5NM	Auckland Oceanic FIR (NZZO)		New Zealand, Auckland	Compliant
100	GOPLU	M625	Category R airspace to Category S FIR TOC Point	5NM	Auckland Oceanic FIR (NZZO)		New Zealand, Auckland	Compliant

S/No.	TOC Points	ATS Routes	Category of Airspace to FIR TOC Point (Inbound only)	Minimum horizontal separation standard	Inbound Transferring FIR	Remarks/Route Restrictions	Accepting FIR	Seamless ANS Plan compliance?
101	GOPLU	Q679	Category R airspace to Category S FIR TOC Point	5NM	Auckland Oceanic FIR (NZZO)		New Zealand, Auckland	Compliant
102	TANEN	M636	Category R airspace to Category S FIR TOC Point	5NM	Auckland Oceanic FIR (NZZO)		New Zealand, Auckland	Compliant
103	TANEN	Q559	Category R airspace to Category S FIR TOC Point	5NM	Auckland Oceanic FIR (NZZO)		New Zealand, Auckland	Compliant
104	GULUT	M639	Category R airspace to Category S FIR TOC Point	5NM	Auckland Oceanic FIR (NZZO)		New Zealand, Auckland	Compliant
105	GULUT	Q651	Category R airspace to Category S FIR TOC Point	5NM	Auckland Oceanic FIR (NZZO)		New Zealand, Auckland	Compliant
106	VELMO	L513	Category R airspace to Category S FIR TOC Point	5NM	Auckland Oceanic FIR (NZZO)		New Zealand, Auckland	Compliant
107	PEBLU	Q619	Category R airspace to Category S FIR TOC Point	5NM	Auckland Oceanic FIR (NZZO)		New Zealand, Auckland	Compliant
108	PEBLU	N759	Category R airspace to Category S FIR TOC Point	5NM	Auckland Oceanic FIR (NZZO)		New Zealand, Auckland	Compliant
109	LUNBI	Y683	Category R airspace to Category S FIR TOC Point	5NM	Auckland Oceanic FIR (NZZO)		New Zealand, Auckland	Compliant
110	LUNBI	L521	Category R airspace to Category S FIR TOC Point	5NM	Auckland Oceanic FIR (NZZO)		New Zealand, Auckland	Compliant
111	UPLAR	L326	Category R airspace to Category S FIR TOC Point	5NM	Auckland Oceanic FIR (NZZO)		New Zealand, Auckland	Compliant
112	UPLAR	Q537	Category R airspace to Category S FIR TOC Point	5NM	Auckland Oceanic FIR (NZZO)		New Zealand, Auckland	Compliant
113	UPLAR	A464	Category R airspace to Category S FIR TOC Point	5NM	Auckland Oceanic FIR (NZZO)		New Zealand, Auckland	Compliant
114	SALAG	A346	Category R airspace to Category S FIR TOC Point	5NM	Auckland Oceanic FIR (NZZO)		New Zealand, Auckland	Compliant
115	ELNOS	G591	Category R airspace to Category S FIR TOC Point	5NM	Auckland Oceanic FIR (NZZO)		New Zealand, Auckland	Compliant
116	DUGAN	A597	Category R airspace to Category S FIR TOC Point	5NM	Auckland Oceanic FIR (NZZO)		New Zealand, Auckland	Compliant
117	KALAG	A578	Category R airspace to Category S FIR TOC Point	5NM	Auckland Oceanic FIR (NZZO)		New Zealand, Auckland	Compliant
118	AGREX	A580	Category R airspace to Category S FIR TOC Point	5NM	Auckland Oceanic FIR (NZZO)		New Zealand, Auckland	Compliant
119	TARIB	G347	Category R airspace to Category S FIR TOC Point	5NM	Auckland Oceanic FIR (NZZO)		New Zealand, Auckland	Compliant
120	SELKA	B575	Category R airspace to Category S FIR TOC Point	5NM	Auckland Oceanic FIR (NZZO)		New Zealand, Auckland	Compliant
121	AGEDU	Q912	Category R airspace to Category S FIR TOC Point	5NM	Auckland Oceanic FIR (NZZO)		New Zealand, Auckland	Compliant
122	IDSEM	Q947	Category R airspace to Category S FIR TOC Point	5NM	Auckland Oceanic FIR (NZZO)		New Zealand, Auckland	Compliant
123	DABAS	Q983	Category R airspace to Category S FIR TOC Point	5NM	Auckland Oceanic FIR (NZZO)		New Zealand, Auckland	Compliant
124	AKLOM	G594	Category R airspace to Category S FIR TOC Point	5NM	Auckland Oceanic FIR (NZZO)		New Zealand, Auckland	Compliant
125	OLBEX	G599	Category R airspace to Category S FIR TOC Point	5NM	Auckland Oceanic FIR (NZZO)		New Zealand, Auckland	Compliant
126	IBESO	R327	Category R airspace to Category S FIR TOC Point	5NM	Auckland Oceanic FIR (NZZO)		New Zealand, Auckland	Compliant
127	GOKAG	Q697	Category R airspace to Category S FIR TOC Point	5NM	Auckland Oceanic FIR (NZZO)		New Zealand, Auckland	Compliant
128	NOKAK	Q712	Category R airspace to Category S FIR TOC Point	5NM	Auckland Oceanic FIR (NZZO)		New Zealand, Auckland	Compliant
129	ATABU	Q611	Category R airspace to Category S FIR TOC Point	5NM	Auckland Oceanic FIR (NZZO)		New Zealand, Auckland	Compliant
130	LALAP	Q854	Category R airspace to Category S FIR TOC Point	5NM	Auckland Oceanic FIR (NZZO)		New Zealand, Auckland	Compliant
131	HELGE	A338	Category R airspace to Category S FIR TOC Point	5NM	Auckland Oceanic FIR (NZZO)		New Zealand, Auckland	Compliant
132	BUGBA	P753	Category R/S airspace to Category R FIR TOC Point	30NM	Brisbane FIR (YBBB)	Based on RCP240 and RSP180 approval	New Zealand, Auckland	Compliant
133	ELGUN	M643	Category R/S airspace to Category R FIR TOC Point	30NM	Brisbane FIR (YBBB)	Based on RCP240 and RSP180 approval	New Zealand, Auckland	Compliant
134	OMKIN	P766	Category R/S airspace to Category R FIR TOC Point	30NM	Brisbane FIR (YBBB)	Based on RCP240 and RSP180 approval	New Zealand, Auckland	Compliant
135	OMKIN	L508	Category R/S airspace to Category R FIR TOC Point	30NM	Brisbane FIR (YBBB)	Based on RCP240 and RSP180 approval	New Zealand, Auckland	Compliant
136	TOMAR	M625	Category R/S airspace to Category R FIR TOC Point	30NM	Brisbane FIR (YBBB)	Based on RCP240 and RSP180 approval	New Zealand, Auckland	Compliant
137	MIDAT	L513	Category R/S airspace to Category R FIR TOC Point	30NM	Brisbane FIR (YBBB)	Based on RCP240 and RSP180 approval	New Zealand, Auckland	Compliant
138	SULON	N750	Category R/S airspace to Category R FIR TOC Point	30NM	Brisbane FIR (YBBB)	Based on RCP240 and RSP180 approval	New Zealand, Auckland	Compliant
139	NUMSA	P880	Category R/S airspace to Category R FIR TOC Point	30NM	Brisbane FIR (YBBB)	Based on RCP240 and RSP180 approval	New Zealand, Auckland	Compliant
140	SASRO	M636	Category R/S airspace to Category R FIR TOC Point	30NM	Brisbane FIR (YBBB)	Based on RCP240 and RSP180 approval	New Zealand, Auckland	Compliant
141	SASRO	N759	Category R/S airspace to Category R FIR TOC Point	30NM	Brisbane FIR (YBBB)	Based on RCP240 and RSP180 approval	New Zealand, Auckland	Compliant
142	LEGAN	L521	Category R/S airspace to Category R FIR TOC Point	30NM	Brisbane FIR (YBBB)	Based on RCP240 and RSP180 approval	New Zealand, Auckland	Compliant
143	RUNOD	L503	Category R/S airspace to Category R FIR TOC Point	30NM	Brisbane FIR (YBBB)	Based on RCP240 and RSP180 approval	New Zealand, Auckland	Compliant
144	VEPAS	M639	Category R/S airspace to Category R FIR TOC Point	30NM	Brisbane FIR (YBBB)	Based on RCP240 and RSP180 approval	New Zealand, Auckland	Compliant

S/No.	TOC Points	ATS Routes	Category of Airspace to FIR TOC Point (Inbound only)	Minimum horizontal separation standard	Inbound Transferring FIR	Remarks/Route Restrictions	Accepting FIR	Seamless ANS Plan compliance?
145	SARAP	G595	Category R/S airspace to Category R FIR TOC Point	30NM	Brisbane FIR (YBBB)	Based on RCP240 and RSP180 approval	New Zealand, Auckland	Compliant
146	RIGMI	A464	Category R/S airspace to Category R FIR TOC Point	30NM	Brisbane FIR (YBBB)	Based on RCP240 and RSP180 approval	New Zealand, Auckland	Compliant
147	TEKEP	A346	Category R/S airspace to Category R FIR TOC Point	30NM	Brisbane FIR (YBBB)	Based on RCP240 and RSP180 approval	New Zealand, Auckland	Compliant
148	TEKEP	B450	Category R/S airspace to Category R FIR TOC Point	30NM	Brisbane FIR (YBBB)	Based on RCP240 and RSP180 approval	New Zealand, Auckland	Compliant
149	LEBOL	B333	Category R/S airspace to Category R FIR TOC Point	30NM	Nadi FIR (NFFF)	Based on RNP4 certified aircraft meeting RCP240/RSP180	New Zealand, Auckland	Compliant
150	UBDAK	G239	Category R/S airspace to Category R FIR TOC Point	30NM	Nadi FIR (NFFF)	Based on RNP4 certified aircraft meeting RCP240/RSP180	New Zealand, Auckland	Compliant
151	OSVAR	G591	Category R/S airspace to Category R FIR TOC Point	30NM	Nadi FIR (NFFF)	Based on RNP4 certified aircraft meeting RCP240/RSP180	New Zealand, Auckland	Compliant
152	LEKAX	A597	Category R/S airspace to Category R FIR TOC Point	30NM	Nadi FIR (NFFF)	Based on RNP4 certified aircraft meeting RCP240/RSP180	New Zealand, Auckland	Compliant
153	SADIM	R599	Category R/S airspace to Category R FIR TOC Point	30NM	Nadi FIR (NFFF)	Based on RNP4 certified aircraft meeting RCP240/RSP180	New Zealand, Auckland	Compliant
154	TERUX	G224	Category R/S airspace to Category R FIR TOC Point	30NM	Nadi FIR (NFFF)	Based on RNP4 certified aircraft meeting RCP240/RSP180	New Zealand, Auckland	Compliant
155	DOLSI	B450	Category R/S airspace to Category R FIR TOC Point	30NM	Nadi FIR (NFFF)	Based on RNP4 certified aircraft meeting RCP240/RSP180	New Zealand, Auckland	Compliant
156	POREN	A578	Category R/S airspace to Category R FIR TOC Point	30NM	Nadi FIR (NFFF)	Based on RNP4 certified aircraft meeting RCP240/RSP180	New Zealand, Auckland	Compliant
157	EGATO	A580	Category R/S airspace to Category R FIR TOC Point	30NM	Nadi FIR (NFFF)	Based on RNP4 certified aircraft meeting RCP240/RSP180	New Zealand, Auckland	Compliant
158	GURDI	B578	Category R/S airspace to Category R FIR TOC Point	30NM	Nadi FIR (NFFF)	Based on RNP4 certified aircraft meeting RCP240/RSP180	New Zealand, Auckland	Compliant
159	TAXIS	B598	Category R/S airspace to Category R FIR TOC Point	30NM	Nadi FIR (NFFF)	Based on RNP4 certified aircraft meeting RCP240/RSP180	New Zealand, Auckland	Compliant
160	SOVPA	B450	Category R/S airspace to Category R FIR TOC Point	30NM	Nadi FIR (NFFF)	Based on RNP4 certified aircraft meeting RCP240/RSP180	New Zealand, Auckland	Compliant
161	ESDOX	G593	Category R/S airspace to Category R FIR TOC Point	30NM	Nadi FIR (NFFF)	Based on RNP4 certified aircraft meeting RCP240/RSP180	New Zealand, Auckland	Compliant
162	VIMEK	B599	Category R/S airspace to Category R FIR TOC Point	30NM	Nadi FIR (NFFF)	Based on RNP4 certified aircraft meeting RCP240/RSP180	New Zealand, Auckland	Compliant
163	BODER	G224	Category R/S airspace to Category R FIR TOC Point	30NM	Nadi FIR (NFFF)	Based on RNP4 certified aircraft meeting RCP240/RSP180	New Zealand, Auckland	Compliant
164	DOMAX	A580	Category R/S airspace to Category R FIR TOC Point	30NM	Nadi FIR (NFFF)	Based on RNP4 certified aircraft meeting RCP240/RSP180	New Zealand, Auckland	Compliant
165	IDNIP	R453	Category R/S airspace to Category R FIR TOC Point	30NM	Nadi FIR (NFFF)	Based on RNP4 certified aircraft meeting RCP240/RSP180	New Zealand, Auckland	Compliant
166	OVLAD	B577	Category R/S airspace to Category R FIR TOC Point	30NM	Nadi FIR (NFFF)	Based on RNP4 certified aircraft meeting RCP240/RSP180	New Zealand, Auckland	Compliant
167	KETOT	A584	Category R/S airspace to Category R FIR TOC Point	30NM	Nadi FIR (NFFF)	Based on RNP4 certified aircraft meeting RCP240/RSP180	New Zealand, Auckland	Compliant
168	GOBIN	B581	Category R/S airspace to Category R FIR TOC Point	30NM	Nadi FIR (NFFF)	Based on RNP4 certified aircraft meeting RCP240/RSP180	New Zealand, Auckland	Compliant
169	DUNEY	G347	Category R/S airspace to Category R FIR TOC Point	30NM	Oakland Oceanic FIR (KZAK)	Based on RNP4 certified aircraft meeting RCP240/RSP180	New Zealand, Auckland	Compliant
170	WOOBY	B581	Category R/S airspace to Category R FIR TOC Point	30NM	Oakland Oceanic FIR (KZAK)	Based on RNP4 certified aircraft meeting RCP240/RSP180	New Zealand, Auckland	Compliant
171	ELLMs	G457	Category R/S airspace to Category R FIR TOC Point	30NM	Oakland Oceanic FIR (KZAK)	Based on RNP4 certified aircraft meeting RCP240/RSP180	New Zealand, Auckland	Compliant
172	PASSA	B577	Category R/S airspace to Category R FIR TOC Point	30NM	Oakland Oceanic FIR (KZAK)	Based on RNP4 certified aircraft meeting RCP240/RSP180	New Zealand, Auckland	Compliant
173	RAMIZ	B596	Category R/S airspace to Category R FIR TOC Point	30NM	Oakland Oceanic FIR (KZAK)	Based on RNP4 certified aircraft meeting RCP240/RSP180	New Zealand, Auckland	Compliant
174	MEGOG	B200	Category R/S airspace to Category R FIR TOC Point	30NM	Tahiti FIR (NTTT)	Based on RNP4 certified aircraft meeting RCP240/RSP180	New Zealand, Auckland	Compliant
175	MASBU	G224	Category R/S airspace to Category R FIR TOC Point	30NM	Tahiti FIR (NTTT)	Based on RNP4 certified aircraft meeting RCP240/RSP180	New Zealand, Auckland	Compliant
176	LEMUN	B599	Category R/S airspace to Category R FIR TOC Point	30NM	Tahiti FIR (NTTT)	Based on RNP4 certified aircraft meeting RCP240/RSP180	New Zealand, Auckland	Compliant
177	GUBKA	G223	Category R/S airspace to Category R FIR TOC Point	30NM	Tahiti FIR (NTTT)	Based on RNP4 certified aircraft meeting RCP240/RSP180	New Zealand, Auckland	Compliant
178	DUMUM	B578	Category R/S airspace to Category R FIR TOC Point	30NM	Tahiti FIR (NTTT)	Based on RNP4 certified aircraft meeting RCP240/RSP180	New Zealand, Auckland	Compliant
179	KRILL	G594	Category R/S airspace to Category R FIR TOC Point	30NM	Tahiti FIR (NTTT)	Based on RNP4 certified aircraft meeting RCP240/RSP180	New Zealand, Auckland	Compliant
180	RAXER	G595	Category R/S airspace to Category R FIR TOC Point	30NM	Tahiti FIR (NTTT)	Based on RNP4 certified aircraft meeting RCP240/RSP180	New Zealand, Auckland	Compliant
181	SOSPI	G599	Category R/S airspace to Category R FIR TOC Point	30NM	Tahiti FIR (NTTT)	Based on RNP4 certified aircraft meeting RCP240/RSP180	New Zealand, Auckland	Compliant
182	DOVOM	G329	Category R/S airspace to Category R FIR TOC Point	30	YBBB	Both aircraft to be equipped RNP 4 and ADS-C	Fiji, Nadi	Compliant
183	UBLIN	A580	Category R/S airspace to Category R FIR TOC Point	30	YBBB	Both aircraft to be equipped RNP 4 and ADS-C	Fiji, Nadi	Compliant
184	RUMIX	B333	Category R/S airspace to Category R FIR TOC Point	30	YBBB	Both aircraft to be equipped RNP 4 and ADS-C	Fiji, Nadi	Compliant
185	VESUN	B580/ B601	Category R/S airspace to Category R FIR TOC Point	30	YBBB	Both aircraft to be equipped RNP 4 and ADS-C	Fiji, Nadi	Compliant
186	TEBUR	B578/ B602	Category R/S airspace to Category R FIR TOC Point	30	YBBB	Both aircraft to be equipped RNP 4 and ADS-C	Fiji, Nadi	Compliant
187	MEPAB	B474/ R587/ G591	Category R/S airspace to Category R FIR TOC Point	30	YBBB	Both aircraft to be equipped RNP 4 and ADS-C	Fiji, Nadi	Compliant

S/No.	TOC Points	ATS Routes	Category of Airspace to FIR TOC Point (Inbound only)	Minimum horizontal separation standard	Inbound Transferring FIR	Remarks/Route Restrictions	Accepting FIR	Seamless ANS Plan compliance?
188	BODEG	B586	Category R/S airspace to Category R FIR TOC Point	30	YBBB	Both aircraft to be equipped RNP 4 and ADS-C	Fiji, Nadi	Compliant
189	ENOUS	A597	Category R/S airspace to Category R FIR TOC Point	30	YBBB	Both aircraft to be equipped RNP 4 and ADS-C	Fiji, Nadi	Compliant
190	NIPER	B598	Category R/S airspace to Category R FIR TOC Point	30	YBBB	Both aircraft to be equipped RNP 4 and ADS-C	Fiji, Nadi	Compliant
191	AKNAK	R450	Category R/S airspace to Category R FIR TOC Point	30	YBBB	Both aircraft to be equipped RNP 4 and ADS-C	Fiji, Nadi	Compliant
192	LEGOT	R599/ B452	Category R/S airspace to Category R FIR TOC Point	30	YBBB	Both aircraft to be equipped RNP 4 and ADS-C	Fiji, Nadi	Compliant
193	KAPNO	B590	Category R/S airspace to Category R FIR TOC Point	30	YBBB	Both aircraft to be equipped RNP 4 and ADS-C	Fiji, Nadi	Compliant
194	BULRO	G223	Category R/S airspace to Category R FIR TOC Point	30	YBBB	Both aircraft to be equipped RNP 4 and ADS-C	Fiji, Nadi	Compliant
195	UPDIX	A584	Category R/S airspace to Category R FIR TOC Point	30	YBBB	Both aircraft to be equipped RNP 4 and ADS-C	Fiji, Nadi	Compliant
196	LEPKA	B326	Category R/S airspace to Category R FIR TOC Point	30	YBBB	Both aircraft to be equipped RNP 4 and ADS-C	Fiji, Nadi	Compliant
197	KASKU	A578	Category R/S airspace to Category R FIR TOC Point	30	YBBB	Both aircraft to be equipped RNP 4 and ADS-C	Fiji, Nadi	Compliant
198	VAVEE	R332	Category R/S airspace to Category R FIR TOC Point	30	KZAK	Both aircraft to be equipped RNP 4 and ADS-C	Fiji, Nadi	Compliant
199	NIXAM	B326	Category R/S airspace to Category R FIR TOC Point	30	KZAK	Both aircraft to be equipped RNP 4 and ADS-C	Fiji, Nadi	Compliant
200	ARTOP	B474	Category R/S airspace to Category R FIR TOC Point	30	KZAK	Both aircraft to be equipped RNP 4 and ADS-C	Fiji, Nadi	Compliant
201	BOILS	B580	Category R/S airspace to Category R FIR TOC Point	30	KZAK	Both aircraft to be equipped RNP 4 and ADS-C	Fiji, Nadi	Compliant
202	CUFFY	A579	Category R/S airspace to Category R FIR TOC Point	30	KZAK	Both aircraft to be equipped RNP 4 and ADS-C	Fiji, Nadi	Compliant
203	GOMIK	B581	Category R/S airspace to Category R FIR TOC Point	30	NZZO	Both aircraft to be equipped RNP 4 and ADS-C	Fiji, Nadi	Compliant
204	KETUS	A584	Category R/S airspace to Category R FIR TOC Point	30	NZZO	Both aircraft to be equipped RNP 4 and ADS-C	Fiji, Nadi	Compliant
205	OVLAD	B577	Category R/S airspace to Category R FIR TOC Point	30	NZZO	Both aircraft to be equipped RNP 4 and ADS-C	Fiji, Nadi	Compliant
206	IDNIP	R453	Category R/S airspace to Category R FIR TOC Point	30	NZZO	Both aircraft to be equipped RNP 4 and ADS-C	Fiji, Nadi	Compliant
207	DOMAX	A580	Category R/S airspace to Category R FIR TOC Point	30	NZZO	Both aircraft to be equipped RNP 4 and ADS-C	Fiji, Nadi	Compliant
208	BODER	G224	Category R/S airspace to Category R FIR TOC Point	30	NZZO	Both aircraft to be equipped RNP 4 and ADS-C	Fiji, Nadi	Compliant
209	VIMEK	B599	Category R/S airspace to Category R FIR TOC Point	30	NZZO	Both aircraft to be equipped RNP 4 and ADS-C	Fiji, Nadi	Compliant
210	ESDOX	G593/ G223	Category R/S airspace to Category R FIR TOC Point	30	NZZO	Both aircraft to be equipped RNP 4 and ADS-C	Fiji, Nadi	Compliant
211	SOVRA	B450	Category R/S airspace to Category R FIR TOC Point	30	NZZO	Both aircraft to be equipped RNP 4 and ADS-C	Fiji, Nadi	Compliant
212	TAXIS	B598	Category R/S airspace to Category R FIR TOC Point	30	NZZO	Both aircraft to be equipped RNP 4 and ADS-C	Fiji, Nadi	Compliant
213	GURDI	B451/ B578	Category R/S airspace to Category R FIR TOC Point	30	NZZO	Both aircraft to be equipped RNP 4 and ADS-C	Fiji, Nadi	Compliant
214	EGATO	A580	Category R/S airspace to Category R FIR TOC Point	30	NZZO	Both aircraft to be equipped RNP 4 and ADS-C	Fiji, Nadi	Compliant
215	POREN	A578	Category R/S airspace to Category R FIR TOC Point	30	NZZO	Both aircraft to be equipped RNP 4 and ADS-C	Fiji, Nadi	Compliant
216	DOLSI	B450/ B451	Category R/S airspace to Category R FIR TOC Point	30	NZZO	Both aircraft to be equipped RNP 4 and ADS-C	Fiji, Nadi	Compliant
217	TERUX	G224	Category R/S airspace to Category R FIR TOC Point	30	NZZO	Both aircraft to be equipped RNP 4 and ADS-C	Fiji, Nadi	Compliant
218	SADIM	R599	Category R/S airspace to Category R FIR TOC Point	30	NZZO	Both aircraft to be equipped RNP 4 and ADS-C	Fiji, Nadi	Compliant
219	LEKAX	A597	Category R/S airspace to Category R FIR TOC Point	30	NZZO	Both aircraft to be equipped RNP 4 and ADS-C	Fiji, Nadi	Compliant
220	OSVAR	G591	Category R/S airspace to Category R FIR TOC Point	30	NZZO	Both aircraft to be equipped RNP 4 and ADS-C	Fiji, Nadi	Compliant
221	UBDAK	G329	Category R/S airspace to Category R FIR TOC Point	30	NZZO	Both aircraft to be equipped RNP 4 and ADS-C	Fiji, Nadi	Compliant
222	LEBOL	B333	Category R/S airspace to Category R FIR TOC Point	30	NZZO	Both aircraft to be equipped RNP 4 and ADS-C	Fiji, Nadi	Compliant
223	NOMAN	A461	Category S airspace to Category S FIR TOC Point	30NM	Manila	1. RNP4 Compliant 2. CPDLC equipped 3. F290 or above 4. Distance is constant or increasing 5. 50NM/10min applies if all of the conditions above cannot be fulfilled	Hong Kong, China	not compliant
224	SABNO	A583	Category R airspace to Category S FIR TOC Point	50NM	Manila	1. RNP10 compliant 2. CPDLC equipped 3. F290 or above 4. Distance is constant or increasing 5. 10min applies if all of the conditions above cannot be fulfilled	Hong Kong, China	Compliant
225	ASOBA	M772	Category R airspace to Category S FIR TOC Point	10 mins	Manila	If preceding aircraft is faster, can apply MNT to reduce the longitudinal separation	Hong Kong, China	not compliant
226	ELATO	A1	Category S airspace to Category S FIR TOC Point	20NM	Taipei	40NM if succeeding aircraft is faster	Hong Kong, China	not compliant

S/No.	TOC Points	ATS Routes	Category of Airspace to FIR TOC Point (Inbound only)	Minimum horizontal separation standard	Inbound Transferring FIR	Remarks/Route Restrictions	Accepting FIR	Seamless ANS Plan compliance?
227	KAPLI	G86	Category S airspace to Category S FIR TOC Point	20NM	Taipei	40NM if succeeding aircraft is faster	Hong Kong, China	not compliant
228	TAMOT	B330	Category S airspace to Category S FIR TOC Point	30NM (joining different routes within HK FIR) 50NM (others)	Guangzhou		Hong Kong, China	not compliant
229	DOTMI	A470	Category S airspace to Category S FIR TOC Point	30NM (one landing at VHHH or joining different routes within HK FIR) 10 mins with MNT (others)	Shanghai / Xiamen / Shantou ATCU		Hong Kong, China	not compliant
230	LELIM	M503	Category S airspace to Category S FIR TOC Point	10 min	Shanghai		Hong Kong, China	not compliant
231	SIERA	R473	Category S airspace to Category S FIR TOC Point	16NM (one or both aircraft is/are landing at VHHH) 20NM (traffic from Zhuhai Approach) 30NM (joining different routes within HK FIR) 10 mins with MNT (others)	Guangzhou/ Zhuhai Approach		Hong Kong, China	not compliant
232	SIKOU	A202	Category S airspace to Category S FIR TOC Point	20NM	Sanya FIR / Zhangjiang ATCU	40NM if succeeding aircraft is faster	Hong Kong, China	not compliant
233	IKELA	A1/P901	Category S airspace to Category S FIR TOC Point	20NM	Sanya FIR	40NM if succeeding aircraft is faster	Hong Kong, China	not compliant
234	DOSUT	M771	Category S airspace to Category S FIR TOC Point	50NM	Sanya FIR	Distance is constant or increasing	Hong Kong, China	not compliant
235	DALAN	B579	Category S airspace to Category S FIR TOC Point	30NM	Kuala Lumpur		Thailand, Bangkok	not compliant
236	DUBAX	R325	Category S airspace to Category S FIR TOC Point	30NM or 10 minutes (Only overflights bound for Yangon FIR via Bangkok FIR on flight levels FL280, FL300 and FL340 (FL360, FL380 and FL400 available subject to coordination).	Kuala Lumpur	*FL280/300/340 Allocation for destinations beyond Bangkok FIR, other levels available subject to coordination. *Above FL200, All Westbound level available within limits of Route. *Pre-Coordinated Level FL240, departure from WMKP/WMKB/WMKA/WMKL.	Thailand, Bangkok	not compliant
237	RIGTO	M769	Category S airspace to Category S FIR TOC Point	30NM or 10 minutes (Only overflights bound for Yangon FIR via Bangkok FIR).	Kuala Lumpur	*Pre-Coordinated Level FL270 for RNAV capable flight departure from WMKP/WMKL. *Above FL200, All Westbound level available within limits of Route	Thailand, Bangkok	not compliant
238	TAMOS	A457	Category S airspace to Category S FIR TOC Point	30NM or 10 minutes (Only overflights bound for Yangon FIR via Bangkok FIR).	Kuala Lumpur	*Above FL200, All Westbound level available within limits of route. *Pre-Coordinated Level FL240, applicable for non RNAV, flights destined to VTSS and RNAV/non RNAV from WMKA or rntering BKK FIR.	Thailand, Bangkok	not compliant
239	KARMI	A464/M757	Category S airspace to Category S FIR TOC Point	30NM	Kuala Lumpur		Thailand, Bangkok	not compliant
240	PASVA	A334 /Y11/ Y24/ Y25	Category S airspace to Category S FIR TOC Point	30NM	Kuala Lumpur	*FL280/300/340 Allocation for destinations beyond Bangkok FIR, other levels available subject to coordination.	Thailand, Bangkok	not compliant
241	KADAX	M626	Category S airspace to Category S FIR TOC Point	30NM or 10 minutes (Only overflights bound for Yangon FIR via Bangkok FIR).	Kuala Lumpur	*All Westbound level available within limits of route.	Thailand, Bangkok	not compliant
242	GOLUD	M751	Category S airspace to Category S FIR TOC Point	30NM	Kuala Lumpur	*All Westbound level available within limits of route.	Thailand, Bangkok	not compliant
243	ABTOK	M644	Category S airspace to Category S FIR TOC Point	30NM	Kuala Lumpur	*All Westbound level available within limits of route.	Thailand, Bangkok	not compliant
244	SAPAM	L645	Category R airspace to Category S FIR TOC Point	10 minutes with MNT	Kuala Lumpur	*FL290 Allocation, other levels available subject to coordination (RNP10).	Thailand, Bangkok	not compliant
245	RUSET	P627	Category R airspace to Category S FIR TOC Point	10 minutes with MNT	Kuala Lumpur	*FL290 Allocation, other levels available subject to coordination (RNP10).	Thailand, Bangkok	not compliant
246	TIDAR	M904	Category S airspace to Category S FIR TOC Point	25NM (REF: Appendix 1, AIR TRAFFIC SERVICES COORDINATION PROCEDURES Ed.3)	Kuala Lumpur	*All Westbound level available within limits of route (RNP10). *Coordination for all flights on ATS route M904 shall be carried out by Kuala Lumpur ACC on behalf of Singapore ACC.	Thailand, Bangkok	not compliant
247	BASIT	R588	Category S airspace to Category S FIR TOC Point	-10 minutes - 20NM surveillance spacing (Details in Note 2)	Phnom Pehn	* Flight departs from airport within Phnom Pehn FIR or VVPQ shall be assigned FL300 or below.	Thailand, Bangkok	not compliant
248	BENSA	N891	Category S airspace to Category S FIR TOC Point	10 minutes	Phnom Pehn	*All even flight levels	Thailand, Bangkok	not compliant
249	SAKDA	R575/R334	Category S airspace to Category S FIR TOC Point	-10 minutes - 20NM surveillance spacing (Details in Note 2)	Phnom Pehn	* Flight departs from airport within Phnom Pehn FIR or VVPQ shall be assigned FL300 or below.	Thailand, Bangkok	not compliant

S/No.	TOC Points	ATS Routes	Category of Airspace to FIR TOC Point (Inbound only)	Minimum horizontal separation standard	Inbound Transferring FIR	Remarks/Route Restrictions	Accepting FIR	Seamless ANS Plan compliance?
250	VAPVU	P629	Category S airspace to Category S FIR TOC Point	- 10 minutes - 20NM surveillance spacing (Details in Note 2)	Phnom Pechn	*For flight via L301 and M502 -No PDC FL260 and 320 -PDC FL360 *Flight departing VDPP or VVTS shall be transferred FL280 and below (expect level change from BACC)	Thailand, Bangkok	not compliant
251	BOKAK	B468	Category S airspace to Category S FIR TOC Point	- 10 minutes - 20NM surveillance spacing (Details in Note 2)	Phnom Pechn	* FL240 and below	Thailand, Bangkok	not compliant
252	AGEDO	B204	Category S airspace to Category S FIR TOC Point	- 10 minutes - 20NM surveillance spacing (Details in Note 2)	Phnom Pechn		Thailand, Bangkok	not compliant
253	TUPGO	M633	Category S airspace to Category S FIR TOC Point	- 10 minutes - 20NM surveillance spacing (Details in Note 2)	Phnom Pechn	*All even flight levels *For flight via L301 and M502 -No PDC FL260 and 320 -PDC FL360 *Flight departing VDSR shall be assigned FL240 and below	Thailand, Bangkok	not compliant
254	OMURO	G474	Category S airspace to Category S FIR TOC Point	- 10 minutes - 20NM surveillance spacing (Details in Note 2)	Phnom Pechn	* FL240 and below	Thailand, Bangkok	not compliant
255	BIDEM	R345	Category S airspace to Category S FIR TOC Point	- 10 minutes - 20NM surveillance spacing (Details in Note 2)	Phnom Pechn	* Flight departs from VDSR shall be assigned FL240 or below.	Thailand, Bangkok	not compliant
256	PAK	B202	Category S airspace to Category S FIR TOC Point	- 10 minutes - 30NM surveillance spacing	Vientiane	*All even flight levels *Ubon APP applied only 10 minutes	Thailand, Bangkok	not compliant
257	BUTRA	A1	Category S airspace to Category S FIR TOC Point	- 10 minutes MNT - 20NM surveillance spacing (Details in Note 2)	Vientiane	*All even flight levels *Ubon APP applied only 10 minutes	Thailand, Bangkok	not compliant
258	SAV	B460/A202	Category S airspace to Category S FIR TOC Point	- 10 minutes MNT - 20NM surveillance spacing (Details in Note 2)	Vientiane	*All even flight levels	Thailand, Bangkok	not compliant
259	BOPNU	M648	Category S airspace to Category S FIR TOC Point	- 10 minutes - 30NM surveillance spacing - 20NM surveillance spacing (Details in Note 2)	Vientiane	*All even flight levels *Udon APP applied only 10 minutes	Thailand, Bangkok	not compliant
260	LEDER	R474/B218/R470	Category S airspace to Category S FIR TOC Point	- 10 minutes	Vientiane	*All even flight levels *Udon APP applied only 10 minutes	Thailand, Bangkok	not compliant
261	VTN	R474/B218/R470	Category S airspace to Category S FIR TOC Point	- 10 minutes (R474/B218/R470) - 40NM surveillance spacing (B218/R470) - 30NM surveillance spacing (R474) - 20NM surveillance spacing (R474) (Details in Note 2)	Vientiane	*All even flight levels *Udon APP applied only 10 minutes	Thailand, Bangkok	not compliant
262	ANBOK	R207	Category R airspace to Category S FIR TOC Point	- 10 minutes	Vientiane	*All even flight levels	Thailand, Bangkok	not compliant
263	TOMIP	R215	Category S airspace to Category S FIR TOC Point	- 10 minutes - 40NM surveillance spacing (FL300 or above) - 20NM surveillance spacing (Details in Note 2)	Vientiane	*All even flight levels	Thailand, Bangkok	not compliant
264	PONUUK	A581	Category S airspace to Category S FIR TOC Point	- 10 minutes - 40NM surveillance spacing (FL300 or above)	Vientiane	*All even flight levels *FL220 for aircraft destined VTCT	Thailand, Bangkok	not compliant
265	YAKUA	B346	Category S airspace to Category S FIR TOC Point	- 10 minutes - 40NM surveillance spacing (FL300 or above) - 20NM surveillance spacing (BKK-LPB) (Details in Note 2)	Vientiane	*All even flight levels *FL300 for flight depart VLLB	Thailand, Bangkok	not compliant
266	SISUK	R207	Category R airspace to Category S FIR TOC Point	- 10 minutes	Yangon	*All odd flight levels	Thailand, Bangkok	not compliant
267	BOMAS	A581	Category S airspace to Category S FIR TOC Point	- 10 minutes - 30NM surveillance spacing - 20NM surveillance spacing (Details in Note 2)	Yangon	*All odd flight levels	Thailand, Bangkok	not compliant
268	MAKAS	G473	Category S airspace to Category S FIR TOC Point	- 10 minutes - 30NM surveillance spacing - 20NM surveillance spacing (Details in Note 2)	Yangon	* No PDC FL350 or above and FL290 or below for overflight or flight depart VYYY	Thailand, Bangkok	not compliant

S/No.	TOC Points	ATS Routes	Category of Airspace to FIR TOC Point (Inbound only)	Minimum horizontal separation standard	Inbound Transferring FIR	Remarks/Route Restrictions	Accepting FIR	Seamless ANS Plan compliance?
269	LUDVI	L507	Category S airspace to Category S FIR TOC Point	- 10 minutes - 30NM surveillance spacing - 20NM surveillance spacing (Details in Note 2)	Yangon	*All odd flight levels * Initial FL290 shall be assigned to flight depart VYYY	Thailand, Bangkok	not compliant
270	BETNO	G463/P646	Category S airspace to Category S FIR TOC Point	- 10 minutes - 30NM surveillance spacing - 20NM surveillance spacing (Details in Note 2)	Yangon	*All odd flight levels * Initial FL290 shall be assigned to flight depart VYYY	Thailand, Bangkok	not compliant
271	NURDA	L5424	Category S airspace to Category S FIR TOC Point	- 10 minutes - 30NM surveillance spacing - 20NM surveillance spacing (Details in Note 2)	Yangon	*All odd flight levels	Thailand, Bangkok	not compliant
272	PUMOR	L877	Category S airspace to Category S FIR TOC Point	- 10 minutes - 30NM surveillance spacing - 20NM surveillance spacing (Details in Note 2)	Yangon	*All odd flight levels	Thailand, Bangkok	not compliant
273	TANEK	L301	Category S airspace to Category S FIR TOC Point	- 10 minutes - 30NM surveillance spacing - 20NM surveillance spacing (Details in Note 2)	Yangon	*All odd flight levels	Thailand, Bangkok	not compliant
274	AKATO	M502	Category S airspace to Category S FIR TOC Point	- 10 minutes - 30NM surveillance spacing - 20NM surveillance spacing (Details in Note 2)	Yangon	*All odd flight levels	Thailand, Bangkok	not compliant
275	EKAVO	M626	Category S airspace to Category S FIR TOC Point	- 10 minutes MNT - 50NM surveillance spacing for pair of aircraft on M626 destined VYYY and transiting VYYY - 7 minutes separation with no closing speed at PUT to be applied for eastbound flight	Yangon	*No PDC FL350 or above and FL290 or below	Thailand, Bangkok	not compliant
276	PADET	G331	Category S airspace to Category S FIR TOC Point	- 10 minutes MNT - 50NM surveillance spacing for pair of aircraft on M626 destined VYYY and transiting VYYY - 7 minutes separation with no closing speed at PUT to be applied for eastbound flight	Yangon	*All odd flight levels	Thailand, Bangkok	not compliant
277	IKULA	L515	Category S airspace to Category S FIR TOC Point	- 10 minutes MNT - 50NM surveillance spacing for pair of aircraft on M626 destined VYYY and transiting VYYY - 7 minutes separation with no closing speed at PUT to be applied for eastbound flight	Yangon	*All odd flight levels	Thailand, Bangkok	not compliant
278	TAVUN	L759	Category S airspace to Category S FIR TOC Point	- 10 minutes MNT - 50NM surveillance spacing for pair of aircraft on M626 destined VYYY and transiting VYYY - 7 minutes separation with no closing speed at PUT to be applied for eastbound flight	Yangon	*All odd flight levels	Thailand, Bangkok	not compliant
279	GOVKO	R581	Category S airspace to Category S FIR TOC Point	10 min	VECF		Nepal, Kathmandu	not compliant
280	BIPOB	G336	Category S airspace to Category S FIR TOC Point	10 min	VECF		Nepal, Kathmandu	not compliant
281	PARSA	G598	Category S airspace to Category S FIR TOC Point	10 min	VECF		Nepal, Kathmandu	not compliant
282	OMUPA	G590	Category S airspace to Category S FIR TOC Point	10 min	VECF		Nepal, Kathmandu	not compliant
283	METOM	G338	Category S airspace to Category S FIR TOC Point	10 min	VECF		Nepal, Kathmandu	not compliant
284	NONIM	B345	Category R/S airspace to Category R FIR TOC Point	10 min	ZPKM		Nepal, Kathmandu	not compliant

S/No.	TOC Points	ATS Routes	Category of Airspace to FIR TOC Point (Inbound only)	Minimum horizontal separation standard	Inbound Transferring FIR	Remarks/Route Restrictions	Accepting FIR	Seamless ANS Plan compliance?
285	NOPUS	Y478	Category R/S airspace to Category R FIR TOC Point	10min	UALAANBAATAR FIR		Mongolia, Ulaanbaatar	not compliant
286	NIGOR	Y962/Y683	Category R/S airspace to Category R FIR TOC Point	10min	UALAANBAATAR FIR		Mongolia, Ulaanbaatar	not compliant
287	RIPEK	R378	Category R/S airspace to Category R FIR TOC Point	10min	UALAANBAATAR FIR		Mongolia, Ulaanbaatar	not compliant
288	DARNO	Y746/A575	Category S airspace to Category S FIR TOC Point	30km	UALAANBAATAR FIR		Mongolia, Ulaanbaatar	not compliant
289	GINOM	Y/655/Y684	Category S airspace to Category S FIR TOC Point	30km	UALAANBAATAR FIR		Mongolia, Ulaanbaatar	not compliant
290	BAMUK	A937	Category S airspace to Category S FIR TOC Point	30km	UALAANBAATAR FIR		Mongolia, Ulaanbaatar	not compliant
291	LETBI	B480	Category S airspace to Category S FIR TOC Point	30km	UALAANBAATAR FIR		Mongolia, Ulaanbaatar	not compliant
292	AMUTA	R372/Y618	Category S airspace to Category S FIR TOC Point	30km	UALAANBAATAR FIR		Mongolia, Ulaanbaatar	not compliant
293	SERNA	Y345/B339	Category S airspace to Category S FIR TOC Point	30km	UALAANBAATAR FIR		Mongolia, Ulaanbaatar	not compliant
294	SULOK	Y327	Category S airspace to Category S FIR TOC Point	30km	UALAANBAATAR FIR		Mongolia, Ulaanbaatar	not compliant
295	SARUUL	G338/Y165	Category S airspace to Category S FIR TOC Point	30km	UALAANBAATAR FIR		Mongolia, Ulaanbaatar	not compliant
296	POLHO	Y345/B339/Y520/Y327	Category S airspace to Category S FIR TOC Point	30km	UALAANBAATAR FIR		Mongolia, Ulaanbaatar	not compliant
297	INTIK	Y618/A575/Y655/Y651	Category S airspace to Category S FIR TOC Point	30km	UALAANBAATAR FIR		Mongolia, Ulaanbaatar	not compliant
298	NIXAL	Y765/Y721/Y683/Y746/Y674/Z156	Category S airspace to Category S FIR TOC Point	30km	UALAANBAATAR FIR		Mongolia, Ulaanbaatar	not compliant
299	MORIT	Y478/Y962/B480/A573	Category S airspace to Category S FIR TOC Point	30km	UALAANBAATAR FIR		Mongolia, Ulaanbaatar	not compliant
300	TEBUS	G588/G401	Category R/S airspace to Category R FIR TOC Point	10min	UALAANBAATAR FIR		Mongolia, Ulaanbaatar	not compliant
301	ARAMA	A464	Category S airspace to Category S FIR TOC Point	10NM	Kuala Lumpur		Singapore	not compliant
302	DUDIS	L644	Category S airspace to Category S FIR TOC Point	10 minutes Mach Number Technique	Ho Chi Minh	Route transit multiple FIRs. Singapore able to reduce longitudinal separation at TOC point.	Singapore	not compliant
303	ESPOB	L642	Category S airspace to Category S FIR TOC Point	20NM	Ho Chi Minh		Singapore	not compliant
304	IGARI	N891	Category S airspace to Category S FIR TOC Point	10 minutes Mach Number Technique	Ho Chi Minh	Singapore able to reduce longitudinal separation at TOC point.	Singapore	not compliant
305	IGARI	M765	Category S airspace to Category S FIR TOC Point	N/A	Ho Chi Minh	Portion of M765 within the Singapore FIR delegated to Kuala Lumpur ACC for provision of ATS.	Singapore	N/A
306	IGARI	R208	Category S airspace to Category S FIR TOC Point	N/A	Ho Chi Minh	Portion of R208 within the Singapore FIR released to Kuala Lumpur ACC daily subject to coordination between Singapore ACC and Lumpur ACC.	Singapore	N/A
307	IKUKO	R208	Category S airspace to Category S FIR TOC Point	N/A	Kuala Lumpur	Portion of R208 within the Singapore FIR released to Kuala Lumpur ACC daily subject to coordination between Singapore ACC and Lumpur ACC.	Singapore	N/A
308	IPRIX	M753	Category S airspace to Category S FIR TOC Point	20NM	Ho Chi Minh		Singapore	not compliant
309	KADAR	M774	Category S airspace to Category S FIR TOC Point	50NM based on RNP10 operations	Jakarta	Singapore able to reduce longitudinal separation at TOC point.	Singapore	not compliant
310	MELAS	N892	Category S airspace to Category S FIR TOC Point	20NM	Ho Chi Minh		Singapore	not compliant
311	MIBEL	L762	Category S airspace to Category S FIR TOC Point	20NM	Jakarta		Singapore	not compliant
312	PARDI	G579	Category S airspace to Category S FIR TOC Point	20NM	Jakarta		Singapore	not compliant
313	PIDON	W22	Category S airspace to Category S FIR TOC Point	20NM	Jakarta		Singapore	not compliant
314	REKOP	A576	Category S airspace to Category S FIR TOC Point	10NM	Kuala Lumpur		Singapore	Compliant
315	SUKRI	M630	Category S airspace to Category S FIR TOC Point	10NM	Kuala Lumpur		Singapore	Compliant
316	SURGA	M635	Category S airspace to Category S FIR TOC Point	50NM based on RNP10 operations	Jakarta	Singapore able to reduce longitudinal separation at TOC point.	Singapore	not compliant
317	TAROS	R469	Category S airspace to Category S FIR TOC Point	20NM	Jakarta		Singapore	not compliant
318	TIDAR	M904	Category S airspace to Category S FIR TOC Point	10 minutes Mach Number Technique	Bangkok	Singapore able to reduce longitudinal separation at TOC point.	Singapore	not compliant
319	VPK	L629	Category S airspace to Category S FIR TOC Point	20NM	Kuala Lumpur		Singapore	not compliant
320	VPK	M758	Category S airspace to Category S FIR TOC Point	20NM	Kuala Lumpur		Singapore	not compliant
321	VPK	M761	Category S airspace to Category S FIR TOC Point	20NM	Kuala Lumpur		Singapore	not compliant
322	NUFFA	Y514	Category S airspace to Category S FIR TOC Point	40NM	Kuala Lumpur	Singapore able to reduce longitudinal separation at TOC point.	Singapore	not compliant

S/No.	TOC Points	ATS Routes	Category of Airspace to FIR TOC Point (Inbound only)	Minimum horizontal separation standard	Inbound Transferring FIR	Remarks/Route Restrictions	Accepting FIR	Seamless ANS Plan compliance?
323	108E Longitude (SABIP)	M761	Category S airspace to Category S FIR TOC Point	10 minutes Mach Number Technique	Kota Kinabalu		Singapore	not compliant
324	108E Longitude (NIMIX)	G580	Category S airspace to Category S FIR TOC Point	10 minutes Mach Number Technique	Kota Kinabalu		Singapore	not compliant
325	AKMON	M768	Category R/S airspace to Category R FIR TOC Point	10 minutes Mach Number Technique	Ho Chi Minh	Singapore able to reduce longitudinal separation at TOC point.	Singapore	not compliant
326	ARUPA	N875	Category R/S airspace to Category R FIR TOC Point	10 minutes Mach Number Technique	Jakarta		Singapore	not compliant
327	ASISU	M768	Category R/S airspace to Category R FIR TOC Point	10 minutes Mach Number Technique	Kota Kinabalu	Singapore able to reduce longitudinal separation at TOC point.	Singapore	not compliant
328	ASISU	M772	Category R/S airspace to Category R FIR TOC Point	10 minutes Mach Number Technique	Kota Kinabalu		Singapore	not compliant
329	BAVUS	L504	Category R/S airspace to Category R FIR TOC Point	10 minutes Mach Number Technique	Jakarta		Singapore	not compliant
330	DAKIX	L649	Category R/S airspace to Category R FIR TOC Point	10 minutes Mach Number Technique	Kota Kinabalu		Singapore	not compliant
331	GULIB	L517	Category R/S airspace to Category R FIR TOC Point	10 minutes Mach Number Technique	Kota Kinabalu		Singapore	Compliant
332	KAMIN	M646	Category R/S airspace to Category R FIR TOC Point	10 minutes Mach Number Technique	Kota Kinabalu		Singapore	Compliant
333	NODIN	M522	Category R/S airspace to Category R FIR TOC Point	N/A	Kota Kinabalu	Portion of M522 within Singapore FIR delegated to Kota Kinabalu ACC for provision of ATS.	Singapore	N/A
334	OLKIT	M758	Category R/S airspace to Category R FIR TOC Point	10 minutes Mach Number Technique	Kota Kinabalu		Singapore	not compliant
335	SUMLA	M754	Category R/S airspace to Category R FIR TOC Point	N/A	Kota Kinabalu	Portion of M754 within Singapore FIR delegated to Kota Kinabalu ACC for provision of ATS.	Singapore	N/A
336	TEGID	M767	Category R/S airspace to Category R FIR TOC Point	30NM based on RNP4 operations	Manila	Implemented: 21 Apr 2022.	Singapore	Compliant
337	VINIK	M754	Category R/S airspace to Category R FIR TOC Point	N/A	Ho Chi Minh	Portion of M754 within Singapore FIR delegated to Kota Kinabalu ACC for provision of ATS.	Singapore	N/A
338	ONISA	L626	Category S airspace to Category S FIR TOC Point	10 MINUTES	KATHMANDU		India, Dehli	not compliant
339	FIR Boundary	Z2, J1(CDR-2 routes)	Category S airspace to Category S FIR TOC Point	50 NM	KOLKATA		India, Dehli	not compliant
340	LKN	J20 (CDR-2 route)	Category S airspace to Category S FIR TOC Point	50NM	KOLKATA		India, Dehli	not compliant
341	LKN	Q18	Category S airspace to Category S FIR TOC Point	20 NM**/40NM*/10 MINUTES	KOLKATA	* Subject to conditions and aircraft equipage; **Trial operations	India, Dehli	not compliant
342	LKN	B345	Category S airspace to Category S FIR TOC Point	40NM*/ 10 MINUTES	KOLKATA	* Subject to conditions and aircraft equipage	India, Dehli	not compliant
343	LKN	W85	Category S airspace to Category S FIR TOC Point	40NM*/ 10 MINUTES	KOLKATA	* Subject to conditions and aircraft equipage	India, Dehli	not compliant
344	FIR Boundary	L509, M875, L759, L333	Category S airspace to Category S FIR TOC Point	50NM*/ 10 MINUTES	KOLKATA	* Subject to conditions and aircraft equipage	India, Dehli	not compliant
345	LKN	A201	Category S airspace to Category S FIR TOC Point	20 NM**/ 40NM* / 10MINUTES	KOLKATA	* Subject to conditions and aircraft equipage; **Trial operations	India, Dehli	not compliant
346	LKN	R460, R594	Category S airspace to Category S FIR TOC Point	20 NM**/ 40NM* / 50NM*/ 10MINUTES	KOLKATA	* Subject to conditions and aircraft equipage; **Trial operations	India, Dehli	not compliant
347	FIR Boundary	W33, [J37, J47, J48, J58, J98 (CDR-2 Routes)]	Category S airspace to Category S FIR TOC Point	10 MINUTES	KOLKATA		India, Dehli	not compliant
348	LKN	J39 (CDR-2 Route)	Category S airspace to Category S FIR TOC Point	10 MINUTES	KOLKATA		India, Dehli	not compliant
349	BUKLO	Q24	Category S airspace to Category S FIR TOC Point	20 NM*	MUMBAI	* Subject to conditions and aircraft equipage	India, Dehli	not compliant
350	FIR Boundary	Q3	Category S airspace to Category S FIR TOC Point	50 NM	MUMBAI		India, Dehli	not compliant
351	FIR Boundary	Z1 (CDR-2 route)	Category S airspace to Category S FIR TOC Point	50 NM	MUMBAI		India, Dehli	not compliant
352	RUPEN	Q1	Category S airspace to Category S FIR TOC Point	20NM* / 50 NM	MUMBAI	* Subject to conditions and aircraft equipage	India, Dehli	not compliant
353	BUKLO	W20	Category S airspace to Category S FIR TOC Point	40NM* / 10 MINUTES	MUMBAI	* Subject to conditions and aircraft equipage	India, Dehli	not compliant
354	IBANI	P628	Category S airspace to Category S FIR TOC Point	50NM* / 10 MINUTES	MUMBAI	* Subject to conditions and aircraft equipage	India, Dehli	not compliant
355	FIR Boundary	A347	Category S airspace to Category S FIR TOC Point	80 NM /10 MINUTES	MUMBAI		India, Dehli	not compliant
356	EPDAD	W122N	Category S airspace to Category S FIR TOC Point	10 MINUTES	MUMBAI		India, Dehli	not compliant
357	BILAN	W10	Category S airspace to Category S FIR TOC Point	10 MINUTES	MUMBAI		India, Dehli	not compliant
358	UUD	W58	Category S airspace to Category S FIR TOC Point	10 MINUTES	MUMBAI		India, Dehli	not compliant
359	FIR Boundary	J37, J50, J60, J62, Z9 (CDR-2 Routes)	Category S airspace to Category S FIR TOC Point	10 MINUTES	MUMBAI		India, Dehli	not compliant
360	POVOS	J51, Z8 (CDR-2 Routes)	Category S airspace to Category S FIR TOC Point	10 MINUTES	MUMBAI		India, Dehli	not compliant

S/No.	TOC Points	ATS Routes	Category of Airspace to FIR TOC Point (Inbound only)	Minimum horizontal separation standard	Inbound Transferring FIR	Remarks/Route Restrictions	Accepting FIR	Seamless ANS Plan compliance?
361	IBANI	J52 (CDR-2 Route)	Category S airspace to Category S FIR TOC Point	10 MINUTES	MUMBAI		India, Dehli	not compliant
362	SEKDO	Z15(CDR-2 Route)	Category S airspace to Category S FIR TOC Point	20 NM	MUMBAI		India, Dehli	not compliant
363	VIKIT	P628	Category S airspace to Category S FIR TOC Point	50NM* / 10 MINUTES	LAHORE	* Subject to conditions and aircraft equipage	India, Dehli	not compliant
364	MERUN	L333, G452	Category S airspace to Category S FIR TOC Point	50NM* / 10 MINUTES	LAHORE	* Subject to conditions and aircraft equipage	India, Dehli	not compliant
365	GUGAL	M875	Category S airspace to Category S FIR TOC Point	50NM* / 10 MINUTES	LAHORE	* Subject to conditions and aircraft equipage	India, Dehli	not compliant
366	SULOM	L509, M890	Category S airspace to Category S FIR TOC Point	50NM* / 10 MINUTES	LAHORE	* Subject to conditions and aircraft equipage	India, Dehli	not compliant
367	SULOM	A466	Category S airspace to Category S FIR TOC Point	50NM* / 5 MINUTES* / 10 MINUTES	LAHORE	* Subject to conditions and aircraft equipage	India, Dehli	not compliant
368	RABAN	A456	Category S airspace to Category S FIR TOC Point	10 MINUTES	LAHORE		India, Dehli	not compliant
369	LAROB	Q24	Category S airspace to Category S FIR TOC Point	20NM	CHENNAI	* Subject to conditions and aircraft equipage	India, Mumbai	not compliant
370	AGELA	Q8	Category S airspace to Category S FIR TOC Point	30NM* / 50NM	CHENNAI	* Subject to conditions and aircraft equipage	India, Mumbai	not compliant
371	OKILA	Q12	Category S airspace to Category S FIR TOC Point	30NM* / 50NM	CHENNAI	* Subject to conditions and aircraft equipage	India, Mumbai	not compliant
372	DUKOD	Z5	Category S airspace to Category S FIR TOC Point	20NM*	CHENNAI	* Subject to conditions and aircraft equipage	India, Mumbai	not compliant
373	LUTGU	L518	Category S airspace to Category S FIR TOC Point	50NM* / 10 MINUTES	CHENNAI	* Subject to conditions and aircraft equipage	India, Mumbai	not compliant
374	LUTGU	J107	Category S airspace to Category S FIR TOC Point	10 MINUTES	CHENNAI		India, Mumbai	not compliant
375	OMDEV	T9	Category S airspace to Category S FIR TOC Point	50NM*	CHENNAI	* Subject to conditions and aircraft equipage	India, Mumbai	not compliant
376	AGELA	W56, N571	Category S airspace to Category S FIR TOC Point	30NM* / 50NM* / 10 MINUTES	CHENNAI	* Subject to conditions and aircraft equipage	India, Mumbai	not compliant
377	EPKOS	W67	Category S airspace to Category S FIR TOC Point	30NM* / 10 MINUTES	CHENNAI	* Subject to conditions and aircraft equipage	India, Mumbai	not compliant
378	BBM	R458	Category S airspace to Category S FIR TOC Point	30NM* / 10 MINUTES	CHENNAI	* Subject to conditions and aircraft equipage	India, Mumbai	not compliant
379	OKILA	P574, R461, W17	Category S airspace to Category S FIR TOC Point	30NM* / 50NM* / 10 MINUTES	CHENNAI	* Subject to conditions and aircraft equipage	India, Mumbai	not compliant
380	GODEP	W28	Category S airspace to Category S FIR TOC Point	30NM* / 10 MINUTES	CHENNAI	* Subject to conditions and aircraft equipage	India, Mumbai	not compliant
381	GODEP	J28	Category S airspace to Category S FIR TOC Point	10 MINUTES	CHENNAI		India, Mumbai	not compliant
382	LUTGU	W19	Category S airspace to Category S FIR TOC Point	10 MINUTES	CHENNAI		India, Mumbai	not compliant
383	BUSBO	W20, W27, Q28, J3	Category S airspace to Category S FIR TOC Point	10 MINUTES	CHENNAI		India, Mumbai	not compliant
384	SUDUM	W38	Category S airspace to Category S FIR TOC Point	10 MINUTES	CHENNAI		India, Mumbai	not compliant
385	AGELA	G208	Category S airspace to Category S FIR TOC Point	50NM* / 10 MINUTES	CHENNAI	* Subject to conditions and aircraft equipage	India, Mumbai	not compliant
386	MELAX	W18, W218	Category S airspace to Category S FIR TOC Point	10MINUTES	CHENNAI		India, Mumbai	not compliant
387	MELAX	Q27/J42	Category S airspace to Category S FIR TOC Point	10 MINUTES	CHENNAI		India, Mumbai	not compliant
388	GUROG	J64	Category S airspace to Category S FIR TOC Point	10 MINUTES	CHENNAI		India, Mumbai	not compliant
389	FIR BOUNDARY	J41	Category S airspace to Category S FIR TOC Point	10 MINUTES	CHENNAI		India, Mumbai	not compliant
390	UXOGO	J65/J104	Category S airspace to Category S FIR TOC Point	10 MINUTES	CHENNAI		India, Mumbai	not compliant
391	DOTVO	J93	Category S airspace to Category S FIR TOC Point	10 MINUTES	CHENNAI		India, Mumbai	not compliant
392	LEBUS	J29	Category S airspace to Category S FIR TOC Point	10 MINUTES	CHENNAI		India, Mumbai	not compliant
393	FIR Boundary	W136, J89	Category S airspace to Category S FIR TOC Point	10 MINUTES	CHENNAI		India, Mumbai	not compliant
394	KEVIB	J36	Category S airspace to Category S FIR TOC Point	10 MINUTES	CHENNAI		India, Mumbai	not compliant
395	TANGE	J67	Category S airspace to Category S FIR TOC Point	10 MINUTES	CHENNAI		India, Mumbai	not compliant
396	TANGE	Q16	Category S airspace to Category S FIR TOC Point	20 NM* / 10 MINUTES	CHENNAI	* Subject to conditions and aircraft equipage	India, Mumbai	not compliant
397	IBANI	Q23	Category S airspace to Category S FIR TOC Point	20 NM	DELHI		India, Mumbai	not compliant
398	TMA Boundary	Z1(CDR-2 routes)	Category S airspace to Category S FIR TOC Point	50 NM	DELHI		India, Mumbai	not compliant
399	ADBUK	Q2	Category S airspace to Category S FIR TOC Point	20NM* / 50NM	DELHI	* Subject to conditions and aircraft equipage	India, Mumbai	not compliant
400	IBANI	W19	Category S airspace to Category S FIR TOC Point	40NM* / 10 MINUTES	DELHI	* Subject to conditions and aircraft equipage	India, Mumbai	not compliant
401	IBANI	P628, L510	Category S airspace to Category S FIR TOC Point	50NM* / 10 MINUTES	DELHI	* Subject to conditions and aircraft equipage	India, Mumbai	not compliant
402	BILAN	W10	Category S airspace to Category S FIR TOC Point	10 MINUTES	DELHI		India, Mumbai	not compliant
403	IDOLA	A474	Category S airspace to Category S FIR TOC Point	10 MINUTES	DELHI		India, Mumbai	not compliant

S/No.	TOC Points	ATS Routes	Category of Airspace to FIR TOC Point (Inbound only)	Minimum horizontal separation standard	Inbound Transferring FIR	Remarks/Route Restrictions	Accepting FIR	Seamless ANS Plan compliance?
404	UUD	W58, R462, Z9,J60	Category S airspace to Category S FIR TOC Point	10 MINUTES	DELHI		India, Mumbai	not compliant
405	UUD	Q5	Category S airspace to Category S FIR TOC Point	50NM WITH MNT	DELHI	* Subject to conditions and aircraft equipage	India, Mumbai	not compliant
406	MIBOG	J50, J62	Category S airspace to Category S FIR TOC Point	10 MINUTES	DELHI		India, Mumbai	not compliant
407	POVOS	J51, Z8	Category S airspace to Category S FIR TOC Point	10 MINUTES	DELHI		India, Mumbai	not compliant
408	SEKDO	Z15	Category S airspace to Category S FIR TOC Point	20 NM	DELHI		India, Mumbai	not compliant
409	FIR Boundary	J37, J52	Category S airspace to Category S FIR TOC Point	10 MINUTES	DELHI		India, Mumbai	not compliant
410	FIR Boundary	Q20	Category S airspace to Category S FIR TOC Point	20NM	KOLKATA		India, Mumbai	not compliant
411	FIR Boundary	V39	Category S airspace to Category S FIR TOC Point	30NM* / 10 MINUTES	KOLKATA	* Subject to conditions and aircraft equipage	India, Mumbai	not compliant
412	ODUMI	T1	Category S airspace to Category S FIR TOC Point	30NM* / 10 MINUTES	KOLKATA	* Subject to conditions and aircraft equipage	India, Mumbai	not compliant
413	VEMPI	W140	Category S airspace to Category S FIR TOC Point	30NM* / 10 MINUTES	KOLKATA	* Subject to conditions and aircraft equipage	India, Mumbai	not compliant
414	TEGIG	G450, V38	Category S airspace to Category S FIR TOC Point	30NM* / 10 MINUTES	KOLKATA	* Subject to conditions and aircraft equipage	India, Mumbai	not compliant
415	ASOPO	P628	Category S airspace to Category S FIR TOC Point	50NM*/ 10 MINUTES	KOLKATA	* Subject to conditions and aircraft equipage	India, Mumbai	not compliant
416	TEGIG	W108	Category S airspace to Category S FIR TOC Point	30NM*/ 10 MINUTES	KOLKATA	* Subject to conditions and aircraft equipage	India, Mumbai	not compliant
417	FIR Boundary	N895, L524, Z14	Category S airspace to Category S FIR TOC Point	50NM*/ 10 MINUTES	KOLKATA	* Subject to conditions and aircraft equipage	India, Mumbai	not compliant
418	Common Boundary	N877, L301	Category S airspace to Category S FIR TOC Point	50NM*/ 10 MINUTES	KOLKATA	* Subject to conditions and aircraft equipage	India, Mumbai	not compliant
419	ASOPO	A791	Category S airspace to Category S FIR TOC Point	30NM* / 50NM* / 10 MINUTES	KOLKATA	* Subject to conditions and aircraft equipage	India, Mumbai	not compliant
420	JJB	W99	Category S airspace to Category S FIR TOC Point	10 MINUTES	KOLKATA		India, Mumbai	not compliant
421	FIR Boundary	G472, G590, W40, W68, W139, V73, W136, V75, J4	Category S airspace to Category S FIR TOC Point	10 MINUTES	KOLKATA		India, Mumbai	not compliant
422	GUTUN	W139	Category S airspace to Category S FIR TOC Point	10 MINUTES	KOLKATA		India, Mumbai	not compliant
423	TELEM	A791, G210, N893, Z10	Category S airspace to Category S FIR TOC Point	50NM* / 10 MINUTES	KARACHI	* Subject to conditions and aircraft equipage	India, Mumbai	not compliant
424	RAMSA	R462	Category S airspace to Category S FIR TOC Point	10 MINUTES	KARACHI		India, Mumbai	not compliant
425	RAMSA	Z15	Category S airspace to Category S FIR TOC Point	20NM	KARACHI	Surveillance Required; RNP 2 & ADS-B OUT	India, Mumbai	not compliant
426	SAPNA	M638, N519	Category R/S airspace to Category R FIR TOC Point	50NM*/ 10 MINUTES	KARACHI	* Subject to conditions and aircraft equipage	India, Mumbai	not compliant
427	RASKI	L639, L301	Category R/S airspace to Category R FIR TOC Point	50NM*/ 10 MINUTES	MUSCAT	* Subject to conditions and aircraft equipage	India, Mumbai	not compliant
428	PARAR	N571	Category R/S airspace to Category R FIR TOC Point	50NM*/ 10 MINUTES	MUSCAT	* Subject to conditions and aircraft equipage	India, Mumbai	not compliant
429	TOTOX	P574	Category R/S airspace to Category R FIR TOC Point	50NM*/ 10 MINUTES	MUSCAT	* Subject to conditions and aircraft equipage	India, Mumbai	not compliant
430	REXOD	N563	Category R/S airspace to Category R FIR TOC Point	50NM*/ 10 MINUTES	MUSCAT	* Subject to conditions and aircraft equipage	India, Mumbai	not compliant
431	LOTAV	M300	Category R/S airspace to Category R FIR TOC Point	50NM*/ 10MINUTES	MUSCAT	* Subject to conditions and aircraft equipage	India, Mumbai	not compliant
432	KITAL	P570, L894, L516	Category R/S airspace to Category R FIR TOC Point	50NM*/ 10 MINUTES	MUSCAT	* Subject to conditions and aircraft equipage	India, Mumbai	not compliant
433	ASPUX	UL425	Category R/S airspace to Category R FIR TOC Point	10 MINUTES	MUSCAT		India, Mumbai	not compliant
434	ANGAL	P751, UM551	Category R/S airspace to Category R FIR TOC Point	10 MINUTES	SANA'S		India, Mumbai	not compliant
435	GIDAS	P323	Category R/S airspace to Category R FIR TOC Point	10 MINUTES	SANA'S		India, Mumbai	not compliant
436	ORLID	G450	Category R/S airspace to Category R FIR TOC Point	10 MINUTES	MOGADISHU		India, Mumbai	not compliant
437	VUTAS	G424, L875	Category R/S airspace to Category R FIR TOC Point	10 MINUTES	SEYCHELLES		India, Mumbai	not compliant
438	CLAVA	B459, L756	Category R/S airspace to Category R FIR TOC Point	10 MINUTES	SEYCHELLES		India, Mumbai	not compliant
439	OTKIR	G465	Category R/S airspace to Category R FIR TOC Point	10 MINUTES	SEYCHELLES		India, Mumbai	not compliant
440	BUSUX	N628	Category R/S airspace to Category R FIR TOC Point	10 MINUTES	SEYCHELLES		India, Mumbai	not compliant
441	MURUS	A474	Category R/S airspace to Category R FIR TOC Point	10 MINUTES	MAURITIUS		India, Mumbai	not compliant
442	LEVLU	N628	Category R/S airspace to Category R FIR TOC Point	10 MINUTES	MALE		India, Mumbai	not compliant
443	ELKEL	G465, L516	Category R/S airspace to Category R FIR TOC Point	10 MINUTES	MALE		India, Mumbai	not compliant
444	RULSA	L756	Category R/S airspace to Category R FIR TOC Point	10 MINUTES	MALE		India, Mumbai	not compliant

S/No.	TOC Points	ATS Routes	Category of Airspace to FIR TOC Point (Inbound only)	Minimum horizontal separation standard	Inbound Transferring FIR	Remarks/Route Restrictions	Accepting FIR	Seamless ANS Plan compliance?
445	BIBGO	L894	Category R/S airspace to Category R FIR TOC Point	10 MINUTES	MALE		India, Mumbai	not compliant
446	ANODA	UL425	Category R/S airspace to Category R FIR TOC Point	10 MINUTES	CHENNAI		India, Mumbai	not compliant
447	KAKIB	N563	Category R/S airspace to Category R FIR TOC Point	50NM*/ 10 MINUTES	CHENNAI	* Subject to conditions and aircraft equipage	India, Mumbai	not compliant
448	OSUPI	T5	Category R/S airspace to Category R FIR TOC Point	50NM*/ 10 MINUTES	CHENNAI	* Subject to conditions and aircraft equipage	India, Mumbai	not compliant
449	BEDIL	L875	Category R/S airspace to Category R FIR TOC Point	50NM*/ 10 MINUTES	CHENNAI	* Subject to conditions and aircraft equipage	India, Mumbai	not compliant
450	VASTU	M300	Category R/S airspace to Category R FIR TOC Point	50NM*/ 10 MINUTES	CHENNAI	* Subject to conditions and aircraft equipage	India, Mumbai	not compliant
451	POMAN	P570	Category R/S airspace to Category R FIR TOC Point	50NM*/ 10 MINUTES	CHENNAI	* Subject to conditions and aircraft equipage	India, Mumbai	not compliant
452	WAYPOINT A	N/A UPRs	Category R/S airspace to Category R FIR TOC Point		DELHI	SEPARATION NOT DEFINED, REFER NOTAM BELOW; C0143/23 NOTAMR C1493/22 Q) VAXX/QARXX/IV/BO/E/000/999/ A) VABF VIDF B) 2302030510 C) 2305030509EST E) TEMPO ATS RTE JSL NDB (VIJR) DCT WAY PT A (2521N07108E) DCT AAE VOR (VAAH) AVBL FOR FLT OPS	India, Mumbai	N/A
453	BEMAK	A462	Category R airspace to Category S FIR TOC Point	50NM* MNT	DHAKA	* Subject to conditions & aircraft equipage	India, Kolkata	Compliant
454	NOKAT	B593	Category R airspace to Category S FIR TOC Point	10 minutes	DHAKA		India, Kolkata	not compliant
455	SUMAG	B465	Category R airspace to Category S FIR TOC Point	10 minutes	DHAKA		India, Kolkata	not compliant
456	AGODA	R472	Category R airspace to Category S FIR TOC Point	50NM* MNT	DHAKA	* Subject to conditions & aircraft equipage	India, Kolkata	Compliant
457	ATOGA	R472	Category R airspace to Category S FIR TOC Point	50NM* MNT	DHAKA	* Subject to conditions & aircraft equipage	India, Kolkata	Compliant
458	IBAPA	B593	Category R airspace to Category S FIR TOC Point	10minutes	DHAKA		India, Kolkata	not compliant
459	AVNAK	B209	Category R airspace to Category S FIR TOC Point	10 minutes	DHAKA		India, Kolkata	not compliant
460	VANTU	R598	Category R airspace to Category S FIR TOC Point	10 minutes	DHAKA		India, Kolkata	not compliant
461	REDAP	R344	Category R airspace to Category S FIR TOC Point	10 minutes	DHAKA		India, Kolkata	not compliant
462	TEBID	A201	Category R airspace to Category S FIR TOC Point	10 minutes	DHAKA		India, Kolkata	not compliant
463	AAT	A201	Category R airspace to Category S FIR TOC Point	10 minutes	DHAKA		India, Kolkata	not compliant
464	TEBID	G463	Category R airspace to Category S FIR TOC Point	10 minutes	DHAKA		India, Kolkata	not compliant
465	KABEM	R325	Category R airspace to Category S FIR TOC Point	10 minutes	KATHMANDU		India, Kolkata	not compliant
466	ROMEO	R581	Category R airspace to Category S FIR TOC Point	10 minutes	KATHMANDU		India, Kolkata	not compliant
467	METOM	G348	Category R airspace to Category S FIR TOC Point	10 minutes	KATHMANDU		India, Kolkata	not compliant
468	PARSA	G598	Category R airspace to Category S FIR TOC Point	10 minutes	KATHMANDU		India, Kolkata	not compliant
469	OMUPA	G590	Category R airspace to Category S FIR TOC Point	10 minutes	KATHMANDU		India, Kolkata	not compliant
470	LUMBI	B345	Category R airspace to Category S FIR TOC Point	10 minutes	KATHMANDU		India, Kolkata	not compliant
471	BIRAT	R344	Category R airspace to Category S FIR TOC Point	10 minutes	KATHMANDU		India, Kolkata	not compliant
472	BIRAT	A467	Category R airspace to Category S FIR TOC Point	10 minutes	KATHMANDU		India, Kolkata	not compliant
473	ROMEO	G463	Category R airspace to Category S FIR TOC Point	10 minutes	KATHMANDU		India, Kolkata	not compliant
474	LALEK	G335	Category R airspace to Category S FIR TOC Point	10 minutes	KATHMANDU		India, Kolkata	not compliant
475	BIPOB	G336	Category R airspace to Category S FIR TOC Point	10 minutes	KATHMANDU		India, Kolkata	not compliant
476	SAGOD	N895	Category R/S airspace to Category R FIR TOC Point	10 minutes/80NM*/50NM* RHSM MNT	YANGOON	* Subject to conditions & aircraft equipage	India, Kolkata	not compliant
477	SAGOD	G472	Category R/S airspace to Category R FIR TOC Point	10 minutes	YANGOON		India, Kolkata	not compliant
478	MEPEL	M770	Category R/S airspace to Category R FIR TOC Point	10 minutes/80NM*/50NM* RHSM MNT	YANGOON	* Subject to conditions & aircraft equipage	India, Kolkata	not compliant
479	CHILA	A599	Category R airspace to Category S FIR TOC Point	10 minutes	YANGOON		India, Kolkata	not compliant
480	APAGO	B465	Category R airspace to Category S FIR TOC Point	10 minutes	YANGOON		India, Kolkata	not compliant
481	ANSOS	A201	Category R airspace to Category S FIR TOC Point	10 minutes	YANGOON		India, Kolkata	not compliant
482	TEBOV	L507	Category R airspace to Category S FIR TOC Point	10 minutes/80NM*/50NM* RHSM MNT	YANGOON	* Subject to conditions & aircraft equipage	India, Kolkata	not compliant

S/No.	TOC Points	ATS Routes	Category of Airspace to FIR TOC Point (Inbound only)	Minimum horizontal separation standard	Inbound Transferring FIR	Remarks/Route Restrictions	Accepting FIR	Seamless ANS Plan compliance?
483	IBITA	P646	Category R/S airspace to Category R FIR TOC Point	10 minutes/80NM*/50NM* RHSM MNT	YANGOON	* Subject to conditions & aircraft equipage	India, Kolkata	not compliant
484	BORBU	L524	Category R/S airspace to Category R FIR TOC Point	10 minutes/80NM*/50NM* RHSM MNT	YANGOON	* Subject to conditions & aircraft equipage	India, Kolkata	not compliant
485	RINDA	L301	Category R/S airspace to Category R FIR TOC Point	10 minutes/80NM*/50NM* RHSM MNT	YANGOON	* Subject to conditions & aircraft equipage	India, Kolkata	not compliant
486	MEPIP	W136	Category S airspace to Category S FIR TOC Point	10 minutes/80NM*/50NM* RHSM MNT	CHENNAI	* Subject to conditions & aircraft equipage	India, Kolkata	not compliant
487	MEPIP	J4	Category S airspace to Category S FIR TOC Point	10 minutes/30NM* MNT	CHENNAI	* Subject to conditions & aircraft equipage	India, Kolkata	not compliant
488	MEPIP	Q17	Category S airspace to Category S FIR TOC Point	10 minutes/30NM*/20NM* MNT	CHENNAI	* Subject to conditions & aircraft equipage	India, Kolkata	not compliant
489	MEPIP	V75	Category S airspace to Category S FIR TOC Point	10 minutes/30NM* MNT	CHENNAI	* Subject to conditions & aircraft equipage	India, Kolkata	not compliant
490	SAPNU	W41	Category S airspace to Category S FIR TOC Point	10 minutes/30NM* MNT	CHENNAI	* Subject to conditions & aircraft equipage	India, Kolkata	not compliant
491	AKSAN	W29	Category S airspace to Category S FIR TOC Point	10 minutes/30NM* MNT	CHENNAI	* Subject to conditions & aircraft equipage	India, Kolkata	not compliant
492	BITEM	W47	Category S airspace to Category S FIR TOC Point	10 minutes/30NM* MNT	CHENNAI	* Subject to conditions & aircraft equipage	India, Kolkata	not compliant
493	VIPAT	V009	Category S airspace to Category S FIR TOC Point	10 minutes/30NM* MNT	CHENNAI	* Subject to conditions & aircraft equipage	India, Kolkata	not compliant
494	XOPOX	A465	Category S airspace to Category S FIR TOC Point	10 minutes/30NM* MNT	CHENNAI	* Subject to conditions & aircraft equipage	India, Kolkata	not compliant
495	NODAX	Q11	Category S airspace to Category S FIR TOC Point	10 minutes/50NM*/30NM*/20NM* MNT	CHENNAI	* Subject to conditions & aircraft equipage	India, Kolkata	not compliant
496	SUPLU	Q10	Category S airspace to Category S FIR TOC Point	10 minutes/50NM*/30NM*/20NM* MNT	CHENNAI	* Subject to conditions & aircraft equipage	India, Kolkata	not compliant
497	MANPU	N877	Category R/S airspace to Category R FIR TOC Point	10 minutes	CHENNAI OCC		India, Kolkata	not compliant
498	BIDEX	L510	Category R/S airspace to Category R FIR TOC Point	10 minutes	CHENNAI OCC		India, Kolkata	not compliant
499	VATLA	P628	Category R/S airspace to Category R FIR TOC Point	10 minutes	CHENNAI OCC		India, Kolkata	not compliant
500	VATLA	W111	Category R/S airspace to Category R FIR TOC Point	10 minutes	CHENNAI OCC		India, Kolkata	not compliant
501	KIBUD	W112	Category R/S airspace to Category R FIR TOC Point	10 minutes	CHENNAI OCC		India, Kolkata	not compliant
502	LIBDI	L759	Category R/S airspace to Category R FIR TOC Point	10 minutes	CHENNAI OCC		India, Kolkata	not compliant
503	ASOPO	A791	Category S airspace to Category S FIR TOC Point	10minutes/50NM*/30NM* M*	NAGPUR	* Subject to conditions & aircraft equipage	India, Kolkata	not compliant
504	NITAG	Q19	Category S airspace to Category S FIR TOC Point	10 minutes/30NM*/20NM* MNT	NAGPUR	* Subject to conditions & aircraft equipage	India, Kolkata	not compliant
505	OSVAS	Q20	Category S airspace to Category S FIR TOC Point	10 minutes/30NM*/20NM* MNT	NAGPUR	* Subject to conditions & aircraft equipage	India, Kolkata	not compliant
506	TEGIG	G450	Category S airspace to Category S FIR TOC Point	10 minutes/30NM*	NAGPUR	* Subject to conditions & aircraft equipage	India, Kolkata	not compliant
507	VEMPI	W140	Category S airspace to Category S FIR TOC Point	10 minutes/30NM*	NAGPUR	* Subject to conditions & aircraft equipage	India, Kolkata	not compliant
508	SADEV	J67	Category S airspace to Category S FIR TOC Point	10 minutes/30NM*	NAGPUR	* Subject to conditions & aircraft equipage	India, Kolkata	not compliant
509	SADEV	Q16	Category S airspace to Category S FIR TOC Point	10 minutes/30NM*/20NM* MNT	NAGPUR	* Subject to conditions & aircraft equipage	India, Kolkata	not compliant
510	OSVAS	Z14	Category S airspace to Category S FIR TOC Point	10minutes/50NM* RHSM/30NM* MNT	NAGPUR	* Subject to conditions & aircraft equipage	India, Kolkata	not compliant
511	TEGIG	W108	Category S airspace to Category S FIR TOC Point	10 minutes/30NM*	NAGPUR	* Subject to conditions & aircraft equipage	India, Kolkata	not compliant
512	SADEV	N895	Category S airspace to Category S FIR TOC Point	10minutes/50NM* RHSM/30NM* MNT	NAGPUR	* Subject to conditions & aircraft equipage	India, Kolkata	not compliant
513	DOVIR	L524	Category S airspace to Category S FIR TOC Point	10minutes/50NM* RHSM/30NM* MNT	NAGPUR	* Subject to conditions & aircraft equipage	India, Kolkata	not compliant
514	UXENA	N877	Category S airspace to Category S FIR TOC Point	10minutes/50NM* RHSM/30NM* MNT	NAGPUR	* Subject to conditions & aircraft equipage	India, Kolkata	not compliant
515	MEPIP	L301	Category S airspace to Category S FIR TOC Point	10minutes/50NM* RHSM/30NM* MNT	NAGPUR	* Subject to conditions & aircraft equipage	India, Kolkata	not compliant
516	AKSIX	V15	Category S airspace to Category S FIR TOC Point	10 minutes/30NM*	NAGPUR	* Subject to conditions & aircraft equipage	India, Kolkata	not compliant
517	ASOPO	P628	Category S airspace to Category S FIR TOC Point	10minutes/50NM* RHSM/30NM* MNT	NAGPUR	* Subject to conditions & aircraft equipage	India, Kolkata	not compliant
518	ODUMI	T1	Category S airspace to Category S FIR TOC Point	10 minutes/30NM*	NAGPUR	* Subject to conditions & aircraft equipage	India, Kolkata	not compliant
519	RUXAL	Q29	Category S airspace to Category S FIR TOC Point	10 minutes/30NM*	NAGPUR	* Subject to conditions & aircraft equipage	India, Kolkata	not compliant
520	TEGIG	L510	Category S airspace to Category S FIR TOC Point	10minutes/50NM RHSM*/30NM MNT*	NAGPUR	* Subject to conditions & aircraft equipage	India, Kolkata	not compliant
521	RUXAL	V39	Category S airspace to Category S FIR TOC Point	10 minutes/30NM*	NAGPUR	* Subject to conditions & aircraft equipage	India, Kolkata	not compliant

S/No.	TOC Points	ATS Routes	Category of Airspace to FIR TOC Point (Inbound only)	Minimum horizontal separation standard	Inbound Transferring FIR	Remarks/Route Restrictions	Accepting FIR	Seamless ANS Plan compliance?
522	KKJ	G590	Category S airspace to Category S FIR TOC Point	10 minutes	NAGPUR		India, Kolkata	not compliant
523	KKJ	W40	Category S airspace to Category S FIR TOC Point	10 minutes	NAGPUR		India, Kolkata	not compliant
524	KKJ	W68	Category S airspace to Category S FIR TOC Point	10 minutes	NAGPUR		India, Kolkata	not compliant
525	KKJ	W139	Category S airspace to Category S FIR TOC Point	10 minutes	NAGPUR		India, Kolkata	not compliant
526	JJB	W99	Category S airspace to Category S FIR TOC Point	10 minutes	NAGPUR		India, Kolkata	not compliant
527	KKJ	Q14	Category S airspace to Category S FIR TOC Point	20NM*	NAGPUR	* Subject to conditions & aircraft equipage	India, Kolkata	not compliant
528	KKJ	Q15	Category S airspace to Category S FIR TOC Point	20NM*	NAGPUR	* Subject to conditions & aircraft equipage	India, Kolkata	not compliant
529	AKSIX	V15	Category S airspace to Category S FIR TOC Point	10 minutes	NAGPUR		India, Kolkata	not compliant
530	SADEV	G472	Category S airspace to Category S FIR TOC Point	10 minutes/30NM*	NAGPUR	* Subject to conditions & aircraft equipage	India, Kolkata	not compliant
531	UXENA	V92	Category S airspace to Category S FIR TOC Point	10 minutes/30NM*	NAGPUR	* Subject to conditions & aircraft equipage	India, Kolkata	not compliant
532	KALRI	V73	Category S airspace to Category S FIR TOC Point	10 minutes/30NM*	NAGPUR	* Subject to conditions & aircraft equipage	India, Kolkata	not compliant
533	DOVIR	W136(below FL255)	Category S airspace to Category S FIR TOC Point	10 minutes/30NM*	NAGPUR	* Subject to conditions & aircraft equipage	India, Kolkata	not compliant
534	VEKRA	J4(below FL255)	Category S airspace to Category S FIR TOC Point	10 minutes/30NM*	NAGPUR	* Subject to conditions & aircraft equipage	India, Kolkata	not compliant
535	KALRI	V75(below FL255)	Category S airspace to Category S FIR TOC Point	10 minutes/30NM*	NAGPUR	* Subject to conditions & aircraft equipage	India, Kolkata	not compliant
536	ASOPO	W66	Category S airspace to Category S FIR TOC Point	10 minutes	VARANASI		India, Kolkata	not compliant
537	BEGUM	W138	Category S airspace to Category S FIR TOC Point	10 minutes	VARANASI		India, Kolkata	not compliant
538	IBUDA	L759	Category S airspace to Category S FIR TOC Point	10 minutes/50NM*	VARANASI	* Subject to conditions & aircraft equipage	India, Kolkata	not compliant
539	IBUDA	W49	Category S airspace to Category S FIR TOC Point	10 minutes	VARANASI		India, Kolkata	not compliant
540	FIR BOUNDARY	W86	Category S airspace to Category S FIR TOC Point	10 minutes	VARANASI		India, Kolkata	not compliant
541	LAPAN	W50	Category S airspace to Category S FIR TOC Point	10 minutes	VARANASI		India, Kolkata	not compliant
542	LAPAN	M875	Category S airspace to Category S FIR TOC Point	10 minutes/ 50NM*	VARANASI	* Subject to conditions & aircraft equipage	India, Kolkata	not compliant
543	LAPAN	B209	Category S airspace to Category S FIR TOC Point	10 minutes	VARANASI		India, Kolkata	not compliant
544	ATALI	W109	Category S airspace to Category S FIR TOC Point	10 minutes	VARANASI		India, Kolkata	not compliant
545	FIR BOUNDARY	W73	Category S airspace to Category S FIR TOC Point	10 minutes	VARANASI		India, Kolkata	not compliant
546	PUPAM	P646	Category S airspace to Category S FIR TOC Point	10 minutes	VARANASI		India, Kolkata	not compliant
547	GGC	R460	Category S airspace to Category S FIR TOC Point	10 minutes/ 20NM*	VARANASI	* Subject to conditions & aircraft equipage	India, Kolkata	not compliant
548	PPT	A201	Category S airspace to Category S FIR TOC Point	10 minutes/ 20NM*	VARANASI	* Subject to conditions & aircraft equipage	India, Kolkata	not compliant
549	PPT	Q18	Category S airspace to Category S FIR TOC Point	10 minutes/ 20NM*	VARANASI	* Subject to conditions & aircraft equipage	India, Kolkata	not compliant
550	FIR BOUNDARY	Z13	Category S airspace to Category S FIR TOC Point	10minutes/50NM*	VARANASI	* Subject to conditions & aircraft equipage	India, Kolkata	not compliant
551	IPLAS	Z2	Category S airspace to Category S FIR TOC Point	10minutes/50NM*	VARANASI	* Subject to conditions & aircraft equipage	India, Kolkata	not compliant
552	LAPAN	V77	Category S airspace to Category S FIR TOC Point	10 minutes	VARANASI		India, Kolkata	not compliant
553	FIR BOUNDARY	L509	Category S airspace to Category S FIR TOC Point	10 minutes/50NM*	DELHI	* Subject to conditions & aircraft equipage	India, Kolkata	not compliant
554	FIR BOUNDARY	L333	Category S airspace to Category S FIR TOC Point	10 minutes/50NM*	DELHI	* Subject to conditions & aircraft equipage	India, Kolkata	not compliant
555	FIR BOUNDARY	W33	Category S airspace to Category S FIR TOC Point	10 minutes/50NM*	DELHI	* Subject to conditions & aircraft equipage	India, Kolkata	not compliant
556	FIR BOUNDARY	J48	Category S airspace to Category S FIR TOC Point	10 minutes	DELHI		India, Kolkata	not compliant
557	FIR BOUNDARY	J1	Category S airspace to Category S FIR TOC Point	10 minutes	DELHI		India, Kolkata	not compliant
558	FIR BOUNDARY	J71	Category S airspace to Category S FIR TOC Point	10 minutes	DELHI		India, Kolkata	not compliant
559	FIR BOUNDARY	J37	Category S airspace to Category S FIR TOC Point	10 minutes	DELHI		India, Kolkata	not compliant

S/No.	TOC Points	ATS Routes	Category of Airspace to FIR TOC Point (Inbound only)	Minimum horizontal separation standard	Inbound Transferring FIR	Remarks/Route Restrictions	Accepting FIR	Seamless ANS Plan compliance?
560	FIR BOUNDARY	J47	Category S airspace to Category S FIR TOC Point	10 minutes	DELHI		India, Kolkata	not compliant
561	IGONA	J30	Category S airspace to Category S FIR TOC Point	10 minutes	DELHI		India, Kolkata	not compliant
562	FIR BOUNDARY	J73	Category S airspace to Category S FIR TOC Point	10 minutes	DELHI		India, Kolkata	not compliant
563	LKN	W40	Category S airspace to Category S FIR TOC Point	10 minutes	DELHI		India, Kolkata	not compliant
564	LKN	M890	Category S airspace to Category S FIR TOC Point	10 minutes/50NM*	DELHI	* Subject to conditions & aircraft equipage	India, Kolkata	not compliant
565	LKN	R460(E/B)	Category S airspace to Category S FIR TOC Point	10 minutes/50NM*	DELHI	* Subject to conditions & aircraft equipage	India, Kolkata	not compliant
566	LKN	R460(W/B)	Category S airspace to Category S FIR TOC Point	10 minutes/50NM*	DELHI	* Subject to conditions & aircraft equipage	India, Kolkata	not compliant
567	LKN	R594	Category S airspace to Category S FIR TOC Point	10 minutes with MNT	DELHI		India, Kolkata	not compliant
568	LKN	G598	Category S airspace to Category S FIR TOC Point	10 minutes	DELHI		India, Kolkata	not compliant
569	FIR BOUNDARY	M875	Category S airspace to Category S FIR TOC Point	10 minutes/50NM*	DELHI	* Subject to conditions & aircraft equipage	India, Kolkata	not compliant
570	KKJ	L759	Category S airspace to Category S FIR TOC Point	10 minutes/50NM*	DELHI	* Subject to conditions & aircraft equipage	India, Kolkata	not compliant
571	FIR BOUNDARY	B209	Category S airspace to Category S FIR TOC Point	10 minutes with MNT	DELHI		India, Kolkata	not compliant
572	FIR BOUNDARY	Z2	Category S airspace to Category S FIR TOC Point	50NM*	DELHI	* Subject to conditions & aircraft equipage	India, Kolkata	not compliant
573	LKN	Q18	Category S airspace to Category S FIR TOC Point	10 minutes/50NM*	DELHI	* Subject to conditions & aircraft equipage	India, Kolkata	not compliant
574	LKN	A201	Category S airspace to Category S FIR TOC Point	10 minutes/50NM*	DELHI	* Subject to conditions & aircraft equipage	India, Kolkata	not compliant
575	FIR BOUNDARY	J59	Category S airspace to Category S FIR TOC Point	10 minutes	DELHI		India, Kolkata	not compliant
576	FIR BOUNDARY	J83	Category S airspace to Category S FIR TOC Point	10 minutes	DELHI		India, Kolkata	not compliant
577	LKN	J20	Category S airspace to Category S FIR TOC Point	50NM	DELHI		India, Kolkata	not compliant
578	LKN	J39	Category S airspace to Category S FIR TOC Point	10 minutes	DELHI		India, Kolkata	not compliant
579	LKN	J82	Category S airspace to Category S FIR TOC Point	10 minutes	DELHI		India, Kolkata	not compliant
580	LKN	W85	Category S airspace to Category S FIR TOC Point	10 minutes	DELHI		India, Kolkata	not compliant
581	NUSRU	Q23	Category S airspace to Category S FIR TOC Point	20NM	MUMBAI		India, Chennai	not compliant
582	VIKAS	Q9	Category S airspace to Category S FIR TOC Point	30NM*/ 50NM	MUMBAI	* Subject to conditions and aircraft equipage	India, Chennai	not compliant
583	GULUP	Q13	Category S airspace to Category S FIR TOC Point	30NM*/ 50NM	MUMBAI	* Subject to conditions and aircraft equipage	India, Chennai	not compliant
584	AGELA	N571	Category S airspace to Category S FIR TOC Point	30NM*/50NM*/ 10 MINUTES	MUMBAI	* Subject to conditions and aircraft equipage	India, Chennai	not compliant
585	LUTGU	L518	Category S airspace to Category S FIR TOC Point	50NM*/ 10 MINUTES	MUMBAI	* Subject to conditions and aircraft equipage	India, Chennai	not compliant
586	OMDEV	T9	Category S airspace to Category S FIR TOC Point	50NM*/ 10 MINUTES	MUMBAI	* Subject to conditions and aircraft equipage	India, Chennai	not compliant
587	OKILA	P574	Category S airspace to Category S FIR TOC Point	30NM*/ 50NM*/ 10 MINUTES	MUMBAI	* Subject to conditions and aircraft equipage	India, Chennai	not compliant
588	EPKOS	W67	Category S airspace to Category S FIR TOC Point	30NM*/ 50NM*/ 10 MINUTES	MUMBAI	* Subject to conditions and aircraft equipage	India, Chennai	not compliant
589	BBM	R458	Category S airspace to Category S FIR TOC Point	30NM*/ 50NM*/ 10 MINUTES	MUMBAI	* Subject to conditions and aircraft equipage	India, Chennai	not compliant
590	GODEP	W28	Category S airspace to Category S FIR TOC Point	30NM*/ 50NM*/ 10 MINUTES	MUMBAI	* Subject to conditions and aircraft equipage	India, Chennai	not compliant
591	IGMAR	B211	Category S airspace to Category S FIR TOC Point	30NM*/ 50NM*/ 10 MINUTES	MUMBAI	* Subject to conditions and aircraft equipage	India, Chennai	not compliant
592	MEPIP	W136	Category S airspace to Category S FIR TOC Point	10 MINUTES	MUMBAI		India, Chennai	not compliant
593	LUTGU	W19	Category S airspace to Category S FIR TOC Point	40NM*/10 MINUTES	MUMBAI	* Subject to conditions and aircraft equipage	India, Chennai	not compliant
594	BUSBO	W20	Category S airspace to Category S FIR TOC Point	40NM*/10 MINUTES	MUMBAI		India, Chennai	not compliant
595	BUSBO	W27	Category S airspace to Category S FIR TOC Point	10 MINUTES	MUMBAI		India, Chennai	not compliant
596	SUDUM	W38	Category S airspace to Category S FIR TOC Point	10 MINUTES	MUMBAI		India, Chennai	not compliant
597	MELAX	W218, W18	Category S airspace to Category S FIR TOC Point	10 MINUTES	MUMBAI		India, Chennai	not compliant
598	MELAX/COMMON BOUNDARY	Q27, J42	Category S airspace to Category S FIR TOC Point	10 MINUTES	MUMBAI		India, Chennai	not compliant

S/No.	TOC Points	ATS Routes	Category of Airspace to FIR TOC Point (Inbound only)	Minimum horizontal separation standard	Inbound Transferring FIR	Remarks/Route Restrictions	Accepting FIR	Seamless ANS Plan compliance?
599	GUROG	J64	Category S airspace to Category S FIR TOC Point	10 MINUTES	MUMBAI		India, Chennai	not compliant
600	COMMON BOUNDARY	J89, J41, J36, J3, J93	Category S airspace to Category S FIR TOC Point	10 MINUTES	MUMBAI		India, Chennai	not compliant
601	BUSBO	Q28	Category S airspace to Category S FIR TOC Point	10 MINUTES	MUMBAI		India, Chennai	not compliant
602	TANGE	J67	Category S airspace to Category S FIR TOC Point	10 MINUTES	MUMBAI		India, Chennai	not compliant
603	COMMON BOUNDARY	J28, J29 (CDR 3 Routes)	Category S airspace to Category S FIR TOC Point	10 MINUTES	MUMBAI		India, Chennai	not compliant
604	AGELA	J104	Category S airspace to Category S FIR TOC Point	10 MINUTES	MUMBAI		India, Chennai	not compliant
605	UXOGO	J65	Category S airspace to Category S FIR TOC Point	10 MINUTES	MUMBAI		India, Chennai	not compliant
606	PEGBO	J5	Category S airspace to Category S FIR TOC Point	50NM*/10 MINUTES	MUMBAI	* Subject to conditions and aircraft equipage	India, Chennai	not compliant
607	NODAX	Q11	Category S airspace to Category S FIR TOC Point	20NM**	KOLKATA	**Trial operations	India, Chennai	not compliant
608	MEPIP	W136, J4	Category S airspace to Category S FIR TOC Point	30NM*/ 10 MINUTES	KOLKATA	* Subject to conditions and aircraft equipage	India, Chennai	not compliant
609	SAPNU	W41	Category S airspace to Category S FIR TOC Point	30NM*/ 10 MINUTES	KOLKATA	* Subject to conditions and aircraft equipage	India, Chennai	not compliant
610	AKSAN	W29	Category S airspace to Category S FIR TOC Point	30NM*/ 10 MINUTES	KOLKATA	* Subject to conditions and aircraft equipage	India, Chennai	not compliant
611	BITEM (above FL255)	W47	Category S airspace to Category S FIR TOC Point	30NM*/ 10 MINUTES	KOLKATA	* Subject to conditions and aircraft equipage	India, Chennai	not compliant
612	VIPAT (above FL255)	V009	Category S airspace to Category S FIR TOC Point	30NM*/ 10 MINUTES	KOLKATA	* Subject to conditions and aircraft equipage	India, Chennai	not compliant
613	XOPOX (above FL255)	A465	Category S airspace to Category S FIR TOC Point	30NM*/ 10 MINUTES	KOLKATA	* Subject to conditions and aircraft equipage	India, Chennai	not compliant
614	MANPU	N877	Category R/S airspace to Category R FIR TOC Point	30NM*/50NM*/80NM*/ 10 MINUTES	KOLKATA	* Subject to conditions and aircraft equipage	India, Chennai	not compliant
615	BASUR	P570	Category S airspace to Category S FIR TOC Point	30NM*/50NM*/10 MINUTES	COLOMBO	* Subject to conditions and aircraft equipage	India, Chennai	not compliant
616	ATETA	M300	Category S airspace to Category S FIR TOC Point	50NM*/ 10 MINUTES	COLOMBO	* Subject to conditions and aircraft equipage	India, Chennai	not compliant
617	IDIBI	G325	Category S airspace to Category S FIR TOC Point	10 MINUTES	COLOMBO		India, Chennai	not compliant
618	SAGOR	A465	Category S airspace to Category S FIR TOC Point	30NM*/10 MINUTES	COLOMBO	* Subject to conditions and aircraft equipage	India, Chennai	not compliant
619	DEMON	R461	Category S airspace to Category S FIR TOC Point	30NM*/ 50NM*/10 MINUTES	COLOMBO	* Subject to conditions and aircraft equipage	India, Chennai	not compliant
620	ANODA	UL425	Category R airspace to Category S FIR TOC Point	50NM*/ 10 MINUTES	MUMBAI	* Subject to conditions and aircraft equipage	India, Chennai	not compliant
621	OSUPI	T5	Category R airspace to Category S FIR TOC Point	50NM*/ 10 MINUTES	MUMBAI	* Subject to conditions and aircraft equipage	India, Chennai	not compliant
622	BEDIL	L875	Category R airspace to Category S FIR TOC Point	50NM*/ 10 MINUTES	MUMBAI	* Subject to conditions and aircraft equipage	India, Chennai	not compliant
623	KAKIB	N563	Category R airspace to Category S FIR TOC Point	50NM*/ 10 MINUTES	MUMBAI	* Subject to conditions and aircraft equipage	India, Chennai	not compliant
624	POMAN	P570	Category R airspace to Category S FIR TOC Point	30NM*/ 50NM*/ 10 MINUTES	MUMBAI	* Subject to conditions and aircraft equipage	India, Chennai	not compliant
625	VASTU	M300	Category R airspace to Category S FIR TOC Point	30NM*/ 50NM*/ 10 MINUTES	MUMBAI	* Subject to conditions and aircraft equipage	India, Chennai	not compliant
626	LULDA	P762	Category R airspace to Category S FIR TOC Point	50NM*/ 80NM*/ 10 MINUTES	YANGON	* Subject to conditions and aircraft equipage	India, Chennai	not compliant
627	VATLA	W111	Category R/S airspace to Category R FIR TOC Point	15 MINUTES	KOLKATA		India, Chennai	not compliant
628	KIBUD	W112	Category R/S airspace to Category R FIR TOC Point	15 MINUTES	KOLKATA		India, Chennai	not compliant
629	MEMAK	N563	Category R/S airspace to Category R FIR TOC Point	50NM*/ 80NM*/ 10 MINUTES	JAKARTA	* Subject to conditions and aircraft equipage	India, Chennai	not compliant
630	DUGOS	P762	Category R/S airspace to Category R FIR TOC Point	50NM*/ 80NM*/ 10 MINUTES	COLOMBO	* Subject to conditions and aircraft equipage	India, Chennai	not compliant
631	SULTO	L645	Category R/S airspace to Category R FIR TOC Point	50NM*/ 10 MINUTES	COLOMBO	* Subject to conditions and aircraft equipage	India, Chennai	not compliant
632	DUGOS	L896, N564	Category R/S airspace to Category R FIR TOC Point	10 MINUTES	COLOMBO		India, Chennai	not compliant
633	IGOGU	N571	Category R/S airspace to Category R FIR TOC Point	50NM*/ 10 MINUTES	KUALALUMPUR	* Subject to conditions and aircraft equipage	India, Chennai	not compliant
634	IGREX	P628	Category R/S airspace to Category R FIR TOC Point	50NM*/ 10 MINUTES	KUALALUMPUR	* Subject to conditions and aircraft equipage	India, Chennai	not compliant
635	NOPEK	P574	Category R/S airspace to Category R FIR TOC Point	50NM*/ 10 MINUTES	KUALALUMPUR	* Subject to conditions and aircraft equipage	India, Chennai	not compliant
636	ANOKO	B466	Category R/S airspace to Category R FIR TOC Point	10 MINUTES	KUALALUMPUR		India, Chennai	not compliant
637	POXOD	R329	Category R/S airspace to Category R FIR TOC Point	15 MINUTES	MALE		India, Chennai	not compliant
638	OSERA	R457	Category R/S airspace to Category R FIR TOC Point	10 MINUTES	MALE		India, Chennai	not compliant
639	TELAR	L899	Category R/S airspace to Category R FIR TOC Point	10 MINUTES	MALE		India, Chennai	not compliant

S/No.	TOC Points	ATS Routes	Category of Airspace to FIR TOC Point (Inbound only)	Minimum horizontal separation standard	Inbound Transferring FIR	Remarks/Route Restrictions	Accepting FIR	Seamless ANS Plan compliance?
640	MEPIP	Q17	Category S airspace to Category S FIR TOC Point	20NM	KOLKATA	*Subject to conditions and aircraft equipage	India, Chennai	not compliant
641	BIDEX	L510	Category R/S airspace to Category R FIR TOC Point	50NM*/ 10 MINUTES	KOLKATA	*Subject to conditions and aircraft equipage	India, Chennai	not compliant
642	LIBDI	L759	Category R/S airspace to Category R FIR TOC Point	50NM*/ 10 MINUTES	KOLKATA	*Subject to conditions and aircraft equipage	India, Chennai	not compliant
643	SAMAK	L645	Category R/S airspace to Category R FIR TOC Point	50NM*/ 10 MINUTES	KUALALUMPUR	* Subject to conditions and aircraft equipage	India, Chennai	not compliant
644	UDULO	W17,W15	Category S airspace to Category S FIR TOC Point	30NM*/ 50NM*/ 10 MINUTES	MUMBAI	* Subject to conditions and aircraft equipage	India, Chennai	not compliant
645	MIPAK	L759	Category R airspace to Category S FIR TOC Point	50NM*/ 80NM*/ 10 MINUTES	YANGON	* Subject to conditions and aircraft equipage	India, Chennai	not compliant
646	COMMON BOUNDARY	W78,W126,W128	Category S airspace to Category S FIR TOC Point	10 MINUTES	MUMBAI		India, Chennai	not compliant
647	KANSU	Y233,B467, Y437,Z56,B332	Category S airspace to Category S FIR TOC Point	17NM or 30KM	PYONGYANG FIR		Republic of Korea	not compliant
648	ANDOL	L512	Category S airspace to Category S FIR TOC Point	15*30NM	FUKUOKA FIR		Republic of Korea	not compliant
649	IGRAS	Z56,B332	Category S airspace to Category S FIR TOC Point	15*30NM	FUKUOKA FIR		Republic of Korea	not compliant
650	LANAT	G597,Y697	Category S airspace to Category S FIR TOC Point	15*30NM	FUKUOKA FIR		Republic of Korea	not compliant
651	SAPRA	G585,Y685	Category S airspace to Category S FIR TOC Point	15*30NM	FUKUOKA FIR		Republic of Korea	not compliant
652	KALEK	Z84	Category S airspace to Category S FIR TOC Point	15*20NM	FUKUOKA FIR		Republic of Korea	not compliant
653	INVOK	Z91,G339	Category S airspace to Category S FIR TOC Point	15*20NM	FUKUOKA FIR		Republic of Korea	not compliant
654	APELA	A582,Y782	Category S airspace to Category S FIR TOC Point	15*20NM	FUKUOKA FIR		Republic of Korea	not compliant
655	SAMDO	A595,Y677	Category S airspace to Category S FIR TOC Point	15*20NM	FUKUOKA FIR		Republic of Korea	not compliant
656	RUGMA	A586,Y579, Z85	Category S airspace to Category S FIR TOC Point	15*20NM	FUKUOKA FIR		Republic of Korea	not compliant
657	ONIKU	A593	Category S airspace to Category S FIR TOC Point	20NM	FUKUOKA FIR		Republic of Korea	not compliant
658	ATOTI	B576,Y722	Category S airspace to Category S FIR TOC Point	30NM	FUKUOKA FIR		Republic of Korea	not compliant
659	LAMEN	A593	Category S airspace to Category S FIR TOC Point	20NM or 10min.	SHANGHAI FIR		Republic of Korea	not compliant
660	AGAVO	Y644	Category S airspace to Category S FIR TOC Point	20NM	SHANGHAI FIR		Republic of Korea	not compliant
661	GUGAL	M875	Category S airspace to Category S FIR TOC Point	50NM	Delhi	Based on RNP10 Operation	Pakistan, Lahore	not compliant
662	SULOM	A466/L509 /T400	Category S airspace to Category S FIR TOC Point	50NM	Delhi	Based on RNP10 Operation on Route L509/T400	Pakistan, Lahore	not compliant
663	RABAN	A456	Category S airspace to Category S FIR TOC Point	10 minutes	Delhi		Pakistan, Lahore	not compliant
664	PURPA	G325/G206	Category R/S airspace to Category R FIR TOC Point	10 Minutes	Urumqi (China)	From TOC Point PURPA on route G206 80NM and on route G325 30NM category R thereafter Category S in Lahore FIR	Pakistan, Lahore	not compliant
665	MOTMO	P500	Category S airspace to Category S FIR TOC Point	10 Minutes	Kabul		Pakistan, Lahore	not compliant
666	DUGIN	G206	Category S airspace to Category S FIR TOC Point	10 Minutes	Kabul	From TOC Point DUGIN on route G206 124NM Category S thereafter Category R in Lahore FIR upto TOC Point PURPA	Pakistan, Lahore	not compliant
667	LAJAK	L509/M881	Category S airspace to Category S FIR TOC Point	7 Minutes or 50NM	Kabul	Based on RNP10 Operation	Pakistan, Lahore	not compliant
668	SITAX	M875/A466	Category S airspace to Category S FIR TOC Point	50NM	Kabul	Based on RNP10 Operation on route M875	Pakistan, Lahore	not compliant
669	DOBAT	N644	Category S airspace to Category S FIR TOC Point	7 Minutes or 50NM	Kabul	Based on RNP10 Operation	Pakistan, Lahore	not compliant
670	BIROS	L750	Category S airspace to Category S FIR TOC Point	7 Minutes or 50NM	Kabul	Based on RNP10 Operation	Pakistan, Lahore	not compliant
671	RIMPA	G202	Category S airspace to Category S FIR TOC Point	10 minutes	Kabul		Pakistan, Lahore	not compliant
672	ASLUM	P628	Category S airspace to Category S FIR TOC Point	7 Minutes or 50NM	Kabul	Based on RNP10 Operation	Pakistan, Lahore	not compliant
673	KABIM	P518	Category S airspace to Category S FIR TOC Point	50NM	Mumbai	Based on RNP10 Operation	Pakistan, Karachi	not compliant
674	SAPNA	M638/N519	Category S airspace to Category S FIR TOC Point	50NM	Mumbai	Based on RNP10 Operation	Pakistan, Karachi	not compliant
675	PARTY	G208	Category S airspace to Category S FIR TOC Point	50NM	Mumbai		Pakistan, Karachi	not compliant
676	TASOP	A325/B210	Category S airspace to Category S FIR TOC Point	50NM	Mumbai		Pakistan, Karachi	not compliant
677	RAMSA	R462	Category S airspace to Category S FIR TOC Point	50NM	Delhi		Pakistan, Karachi	not compliant
678	VIKIT	P628	Category S airspace to Category S FIR TOC Point	50NM	Delhi	Based on RNP10 Operation	Pakistan, Karachi	not compliant
679	MERUN	G202/R471 /G452/L750	Category S airspace to Category S FIR TOC Point	50NM	Delhi	Based on RNP10 Operation on Route L750	Pakistan, Karachi	not compliant

S/No.	TOC Points	ATS Routes	Category of Airspace to FIR TOC Point (Inbound only)	Minimum horizontal separation standard	Inbound Transferring FIR	Remarks/Route Restrictions	Accepting FIR	Seamless ANS Plan compliance?
680	SERKA	N636/B466	Category S airspace to Category S FIR TOC Point	7 Minutes or 50NM	Kabul	Based on RNP10 Operation on route N636	Pakistan, Karachi	not compliant
681	GADER	A453	Category R/S airspace to Category R FIR TOC Point	10 minutes	Kabul		Pakistan, Karachi	not compliant
682	PIRAN	A453	Category R/S airspace to Category R FIR TOC Point	10 minutes	Tehran		Pakistan, Karachi	not compliant
683	DERBO	G452	Category S airspace to Category S FIR TOC Point	50NM	Tehran	Based on RNP10 Operation	Pakistan, Karachi	not compliant
684	KEBUD	L124/G208	Category S airspace to Category S FIR TOC Point	50NM	Tehran	Based on RNAV5 Operation on route L124	Pakistan, Karachi	not compliant
685	ASVIB	G665	Category S airspace to Category S FIR TOC Point	50NM	Tehran		Pakistan, Karachi	not compliant
686	EGRON	A791	Category S airspace to Category S FIR TOC Point	50 NM	Tehran		Pakistan, Karachi	not compliant
687	METBI	R462	Category S airspace to Category S FIR TOC Point	50NM	Tehran		Pakistan, Karachi	not compliant
688	ALPOR	M504	Category S airspace to Category S FIR TOC Point	5 Minutes or 50NM	Muscat	Based on RNAV5 Operation on route	Pakistan, Karachi	not compliant
689	APELO	B505	Category S airspace to Category S FIR TOC Point	5 Minutes or 50NM	Muscat		Pakistan, Karachi	not compliant
690	ALPOR	G216	Category S airspace to Category S FIR TOC Point	5 Minutes	Muscat		Pakistan, Karachi	not compliant
691	BOMPA	B202	Category S airspace to Category S FIR TOC Point	20NM	VIENTIANE		Viet Nam, Ho Chi Minh	not compliant
692	EXOTO	L642	Category S airspace to Category S FIR TOC Point	50NM	SANYA		Viet Nam, Ho Chi Minh	not compliant
693	MIGUG	N892	Category S airspace to Category S FIR TOC Point	30NM	MANILA		Viet Nam, Ho Chi Minh	not compliant
694	ARESI	L628	Category S airspace to Category S FIR TOC Point	30NM			Viet Nam, Ho Chi Minh	not compliant
695	PANDI	M765,N500	Category S airspace to Category S FIR TOC Point	30NM	MANILA		Viet Nam, Ho Chi Minh	not compliant
696	AKMON	L625	Category S airspace to Category S FIR TOC Point	30NM	SINGAPORE		Viet Nam, Ho Chi Minh	not compliant
697	DUDIS	M771	Category S airspace to Category S FIR TOC Point	30NM	SINGAPORE		Viet Nam, Ho Chi Minh	not compliant
698	IPRIX	M753	Category S airspace to Category S FIR TOC Point	30NM	SINGAPORE		Viet Nam, Ho Chi Minh	not compliant
699	IGARI	M765	Category S airspace to Category S FIR TOC Point	20NM	SINGAPORE	Delegation of the responsibility for the provision of ATS by Kuala Lumpur ACC	Viet Nam, Ho Chi Minh	not compliant
700	DADEM	M510	Category S airspace to Category S FIR TOC Point	20NM	PHNOMPENH		Viet Nam, Ho Chi Minh	not compliant
701	MULAD	M505	Category S airspace to Category S FIR TOC Point	20NM	PHNOMPENH		Viet Nam, Ho Chi Minh	not compliant
702	NUMDI	R334	Category S airspace to Category S FIR TOC Point	20NM	PHNOMPENH		Viet Nam, Ho Chi Minh	not compliant
703	XONAN	N891	Category S airspace to Category S FIR TOC Point	20NM	PHNOMPENH		Viet Nam, Ho Chi Minh	not compliant
704	OSOTA	M753	Category S airspace to Category S FIR TOC Point	20NM	PHNOMPENH		Viet Nam, Ho Chi Minh	not compliant
705	KISAN	M755	Category S airspace to Category S FIR TOC Point	20NM	PHNOMPENH		Viet Nam, Ho Chi Minh	not compliant
706	SAPEN	R468	Category S airspace to Category S FIR TOC Point	20NM	PHNOMPENH		Viet Nam, Ho Chi Minh	not compliant
707	GONLY	R588	Category S airspace to Category S FIR TOC Point	20NM	PHNOMPENH		Viet Nam, Ho Chi Minh	not compliant
708	ANINA	G474	Category S airspace to Category S FIR TOC Point	20NM	PHNOMPENH		Viet Nam, Ho Chi Minh	not compliant
709	SADIN	Q1	Category S airspace to Category S FIR TOC Point	20NM	HOCHIMINH	Delegation of the responsibility for the provision of ATS by HA NOI ACC	Viet Nam, Ho Chi Minh	not compliant
710	VILOT	W1	Category S airspace to Category S FIR TOC Point	20NM	HOCHIMINH	Delegation of the responsibility for the provision of ATS by HA NOI ACC	Viet Nam, Ho Chi Minh	not compliant
711	CQ	W2	Category S airspace to Category S FIR TOC Point	20NM	HOCHIMINH	Delegation of the responsibility for the provision of ATS by HA NOI ACC	Viet Nam, Ho Chi Minh	not compliant
712	ASUKU	G221	Category S airspace to Category S FIR TOC Point	20NM	HOCHIMINH	Delegation of the responsibility for the provision of ATS by HA NOI ACC	Viet Nam, Ho Chi Minh	not compliant
713	PAPRA	A1	Category S airspace to Category S FIR TOC Point	20NM	Vientiane		Viet Nam, Hanoi	not compliant
714	BUNTA	A1/G221	Category S airspace to Category S FIR TOC Point	20NM	Sanya		Viet Nam, Hanoi	not compliant
715	VILAO	A202/N639	Category S airspace to Category S FIR TOC Point	20NM	Vientiane		Viet Nam, Hanoi	not compliant
716	ASSAD	A202/A206	Category S airspace to Category S FIR TOC Point	20NM	Sanya		Viet Nam, Hanoi	not compliant
717	NALAO	A206	Category S airspace to Category S FIR TOC Point	20NM	Vientiane		Viet Nam, Hanoi	not compliant
718	LADON	B214	Category S airspace to Category S FIR TOC Point	20NM	Vientiane		Viet Nam, Hanoi	not compliant
719	LAPON	B465	Category S airspace to Category S FIR TOC Point	20NM	Vientiane		Viet Nam, Hanoi	not compliant
720	TORED	R328	Category S airspace to Category S FIR TOC Point	20NM	Vientiane		Viet Nam, Hanoi	not compliant
721	IDOTA	R335	Category S airspace to Category S FIR TOC Point	20NM	Vientiane		Viet Nam, Hanoi	not compliant
722	KATBO	R471	Category S airspace to Category S FIR TOC Point	20NM	Kunming		Viet Nam, Hanoi	not compliant
723	LAVOS	R474	Category S airspace to Category S FIR TOC Point	20NM	Vientiane		Viet Nam, Hanoi	not compliant

S/No.	TOC Points	ATS Routes	Category of Airspace to FIR TOC Point (Inbound only)	Minimum horizontal separation standard	Inbound Transferring FIR	Remarks/Route Restrictions	Accepting FIR	Seamless ANS Plan compliance?
724	TEBAK	R474	Category S airspace to Category S FIR TOC Point	20NM	Nanning		Viet Nam, Hanoi	not compliant
725	LATOM	Q2	Category S airspace to Category S FIR TOC Point	20NM	HoChiMinh		Viet Nam, Hanoi	not compliant
726	CQ	W2	Category S airspace to Category S FIR TOC Point	20NM	HoChiMinh		Viet Nam, Hanoi	not compliant
727	VILOT	W1	Category S airspace to Category S FIR TOC Point	20NM	HoChiMinh		Viet Nam, Hanoi	not compliant
728	ASUKU	G221	Category S airspace to Category S FIR TOC Point	20NM	HoChiMinh		Viet Nam, Hanoi	not compliant
729	MEMAK	N563	Category R airspace to Category S FIR TOC Point	50 NM	Chennai	Based on RNP10 operations	Indonesia, Jakarta	Compliant
730	TOPIN	M300	Category S airspace to Category S FIR TOC Point	50 NM	Colombo	Based on RNAV 10 operations	Indonesia, Jakarta	not compliant
731	NIXUL	P627,P570	Category S airspace to Category S FIR TOC Point	50 NM	Colombo	Based on RNAV 10 operations	Indonesia, Jakarta	not compliant
732	NISOK	P756,L896	Category R airspace to Category S FIR TOC Point	50 NM	Colombo	Based on RNAV 10 operations	Indonesia, Jakarta	Compliant
733	SELSU	M766	Category R airspace to Category S FIR TOC Point	50 NM	Colombo	Based on RNAV 10 operations	Indonesia, Jakarta	Compliant
734	KETIV	L744,N628,L897	Category R airspace to Category S FIR TOC Point	50 NM	Colombo	Based on RNAV 10 operations	Indonesia, Jakarta	Compliant
735	POSOD	N663	Category R airspace to Category S FIR TOC Point	10 Minute MNT	Melbourne		Indonesia, Jakarta	not compliant
736	AKUKO	B325	Category R airspace to Category S FIR TOC Point	10 Minute MNT	Melbourne		Indonesia, Jakarta	not compliant
737	XXM	L897,G337,G209,R206	Category R airspace to Category S FIR TOC Point	50 NM	Melbourne	Based on RNP10 operations	Indonesia, Jakarta	Compliant
738	ATMAL	N646,N752	Category R airspace to Category S FIR TOC Point	50 NM	Melbourne	Based on RNP10 operations	Indonesia, Jakarta	Compliant
739	LAMOB	B469,L764	Category R airspace to Category S FIR TOC Point	50 NM	Melbourne	Based on RNP10 operations	Indonesia, Jakarta	Compliant
740	SAPDA	L896,A585,L895	Category R airspace to Category S FIR TOC Point	50 NM	Melbourne	Based on RNP10 operations	Indonesia, Jakarta	Compliant
741	MADIN	M766,W16,W13	Category S airspace to Category S FIR TOC Point	10 NM	Ujung Pandang		Indonesia, Jakarta	Compliant
742	KALUT	T6	Category S airspace to Category S FIR TOC Point	10 NM	Ujung Pandang		Indonesia, Jakarta	Compliant
743	SPIKO	W18	Category S airspace to Category S FIR TOC Point	10 NM	Ujung Pandang		Indonesia, Jakarta	Compliant
744	TAVIP	W15,M635	Category S airspace to Category S FIR TOC Point	10 NM	Ujung Pandang		Indonesia, Jakarta	Compliant
745	TANUR	M766	Category S airspace to Category S FIR TOC Point	10 NM	Ujung Pandang		Indonesia, Jakarta	Compliant
746	SUGIK	G464	Category S airspace to Category S FIR TOC Point	10 NM	Ujung Pandang		Indonesia, Jakarta	Compliant
747	NOMAD	W35	Category S airspace to Category S FIR TOC Point	10 NM	Ujung Pandang		Indonesia, Jakarta	Compliant
748	OSRUT	L504	Category S airspace to Category S FIR TOC Point	10 NM	Ujung Pandang		Indonesia, Jakarta	Compliant
749	ARUPA	N875	Category R airspace to Category S FIR TOC Point	10 Minute MNT	Singapore		Indonesia, Jakarta	not compliant
750	BAVUS	L504	Category R airspace to Category S FIR TOC Point	10 Minute MNT	Singapore		Indonesia, Jakarta	not compliant
751	KADAR	M744	Category R airspace to Category S FIR TOC Point	50 NM	Singapore	Based on RNP10 operations	Indonesia, Jakarta	Compliant
752	KIKOR	L644	Category R airspace to Category S FIR TOC Point	10 Minute MNT	Singapore		Indonesia, Jakarta	not compliant
753	SURGA	M635	Category R airspace to Category S FIR TOC Point	50 NM	Singapore	Based on RNP10 operations	Indonesia, Jakarta	Compliant
754	KIRDA	W26	Category S airspace to Category S FIR TOC Point	20 NM	Singapore		Indonesia, Jakarta	not compliant
755	ANITO	B470	Category S airspace to Category S FIR TOC Point	20 NM	Singapore		Indonesia, Jakarta	not compliant
756	NE	W24,B469	Category S airspace to Category S FIR TOC Point	20 NM	Singapore		Indonesia, Jakarta	not compliant
757	TUSNU	W22	Category S airspace to Category S FIR TOC Point	20 NM	Singapore		Indonesia, Jakarta	not compliant
758	TAROS	R469	Category S airspace to Category S FIR TOC Point	20 NM	Singapore		Indonesia, Jakarta	not compliant
759	MIBEL	L762	Category S airspace to Category S FIR TOC Point	50 NM	Singapore	Based on RNP10 operations	Indonesia, Jakarta	not compliant
760	OKADA	P468	Category R airspace to Category S FIR TOC Point	10 Minute MNT	Kota Kinabalu		Indonesia, Jakarta	not compliant
761	ANIPU	M772	Category R airspace to Category S FIR TOC Point	80 NM	Kota Kinabalu	Based on RNAV 10 operations	Indonesia, Jakarta	not compliant
762	PAPSA	R455	Category S airspace to Category S FIR TOC Point	10 Minute MNT	Kota Kinabalu		Indonesia, Jakarta	not compliant
763	SALAX	N633,M300,N563	Category S airspace to Category S FIR TOC Point	20 NM	Kuala Lumpur		Indonesia, Jakarta	not compliant
764	PUGER	R461	Category S airspace to Category S FIR TOC Point	20 NM	Kuala Lumpur		Indonesia, Jakarta	not compliant
765	GOTLA	G468	Category R airspace to Category S FIR TOC Point	20 NM	Kuala Lumpur		Indonesia, Jakarta	Compliant
766	TASEK	B466	Category R airspace to Category S FIR TOC Point	10 Minute MNT	Kuala Lumpur		Indonesia, Jakarta	not compliant
767	TOSOK	B466	Category R airspace to Category S FIR TOC Point	10 Minute MNT	Kuala Lumpur		Indonesia, Jakarta	not compliant

S/No.	TOC Points	ATS Routes	Category of Airspace to FIR TOC Point (Inbound only)	Minimum horizontal separation standard	Inbound Transferring FIR	Remarks/Route Restrictions	Accepting FIR	Seamless ANS Plan compliance?
768	ANSAX	P574,L762	Category R airspace to Category S FIR TOC Point	50 NM	Kuala Lumpur	Based on RNP10 operations	Indonesia, Jakarta	Compliant
769	POVUS	P627	Category R airspace to Category S FIR TOC Point	10 Minute MNT	Kuala Lumpur		Indonesia, Jakarta	not compliant
770	VANKA	B456	Category S airspace to Category S FIR TOC Point	50NM	Port Moresby		Indonesia, Ujung Pandang	not compliant
771	KADAB	B462	Category S airspace to Category S FIR TOC Point	50NM	Port Moresby		Indonesia, Ujung Pandang	not compliant
772	OSERO	A215	Category S airspace to Category S FIR TOC Point	50NM	Port Moresby		Indonesia, Ujung Pandang	not compliant
773	BEGMI	G459	Category R airspace to Category S FIR TOC Point	50NM	Brisbane		Indonesia, Ujung Pandang	Compliant
774	OPABA	B473/B588	Category R airspace to Category S FIR TOC Point	50NM	Brisbane		Indonesia, Ujung Pandang	Compliant
775	TOREX	B472	Category R airspace to Category S FIR TOC Point	50NM	Brisbane		Indonesia, Ujung Pandang	Compliant
776	GUTEV	R340	Category R airspace to Category S FIR TOC Point	50NM	Brisbane		Indonesia, Ujung Pandang	Compliant
777	BUTPA	A461	Category R airspace to Category S FIR TOC Point	50NM	Brisbane		Indonesia, Ujung Pandang	Compliant
778	ELBIS	M768/A339	Category R airspace to Category S FIR TOC Point	50NM	Brisbane		Indonesia, Ujung Pandang	Compliant
779	KIKEM	A464/M774	Category R airspace to Category S FIR TOC Point	50NM	Brisbane		Indonesia, Ujung Pandang	Compliant
780	SPRIG	J199	Category R airspace to Category S FIR TOC Point	50NM	Brisbane		Indonesia, Ujung Pandang	Compliant
781	ALEGO	A458	Category R airspace to Category S FIR TOC Point	50NM	Brisbane		Indonesia, Ujung Pandang	Compliant
782	SATNA	M766	Category R airspace to Category S FIR TOC Point	50NM	Brisbane		Indonesia, Ujung Pandang	Compliant
783	ANOXA	A587/G426	Category R airspace to Category S FIR TOC Point	50NM	Brisbane		Indonesia, Ujung Pandang	Compliant
784	ATMAP	A576/M635	Category R airspace to Category S FIR TOC Point	50NM	Brisbane		Indonesia, Ujung Pandang	Compliant
785	EGATU	G578	Category R airspace to Category S FIR TOC Point	50NM	Brisbane		Indonesia, Ujung Pandang	Compliant
786	TARUN	T20/B349	Category R airspace to Category S FIR TOC Point	50NM	Brisbane		Indonesia, Ujung Pandang	Compliant
787	PUPIT	R592	Category R airspace to Category S FIR TOC Point	50NM	Brisbane		Indonesia, Ujung Pandang	Compliant
788	PROGO	T1	Category S airspace to Category S FIR TOC Point	10NM	Jakarta		Indonesia, Ujung Pandang	Compliant
789	ANY	W45/T3	Category S airspace to Category S FIR TOC Point	10NM	Jakarta		Indonesia, Ujung Pandang	Compliant
790	TELET	T5	Category S airspace to Category S FIR TOC Point	10NM	Jakarta		Indonesia, Ujung Pandang	Compliant
791	MADIN	W16/M766	Category S airspace to Category S FIR TOC Point	10NM	Jakarta		Indonesia, Ujung Pandang	Compliant
792	RUPKA	L511	Category S airspace to Category S FIR TOC Point	10NM	Jakarta		Indonesia, Ujung Pandang	Compliant
793	SPIKO	W18	Category S airspace to Category S FIR TOC Point	10NM	Jakarta		Indonesia, Ujung Pandang	Compliant
794	TAVIP	W15/M635	Category S airspace to Category S FIR TOC Point	10NM	Jakarta		Indonesia, Ujung Pandang	Compliant
795	TANUR	M774	Category S airspace to Category S FIR TOC Point	10NM	Jakarta		Indonesia, Ujung Pandang	Compliant
796	SUGIK	G464	Category S airspace to Category S FIR TOC Point	10NM	Jakarta		Indonesia, Ujung Pandang	Compliant
797	NOMAD	W35	Category S airspace to Category S FIR TOC Point	10NM	Jakarta		Indonesia, Ujung Pandang	Compliant
798	OSRUD	W36/L504	Category S airspace to Category S FIR TOC Point	10NM	Jakarta		Indonesia, Ujung Pandang	Compliant
799	AGSON	R223	Category S airspace to Category S FIR TOC Point	10 Minutes (MNT)	Kinabalu		Indonesia, Ujung Pandang	not compliant
800	MAMOK	M522/M768	Category S airspace to Category S FIR TOC Point	10 Minutes (MNT)	Kinabalu		Indonesia, Ujung Pandang	not compliant
801	GORAI	G578	Category R airspace to Category S FIR TOC Point	50 NM	Manila		Indonesia, Ujung Pandang	Compliant
802	MOLLY	A461	Category R airspace to Category S FIR TOC Point	50 NM	Manila		Indonesia, Ujung Pandang	Compliant
803	PEDNO	R342/R590	Category R airspace to Category S FIR TOC Point	10 Minutes (MNT)	Manila		Indonesia, Ujung Pandang	not compliant
804	SELSE	B472	Category R airspace to Category S FIR TOC Point	50 NM	Manila		Indonesia, Ujung Pandang	Compliant
805	SADAN	B473	Category R airspace to Category S FIR TOC Point	10 Minutes (MNT)	Manila		Indonesia, Ujung Pandang	not compliant
806	BOLUG	A339	Category R/S airspace to Category R FIR TOC Point	10 Minutes (MNT)	Manila		Indonesia, Ujung Pandang	not compliant
807	BIDOR	B462	Category R/S airspace to Category R FIR TOC Point	10 Minutes (MNT)	Manila		Indonesia, Ujung Pandang	not compliant
808	CAHYO	A450	Category R/S airspace to Category R FIR TOC Point	50 NM	Oakland Sec.5		Indonesia, Ujung Pandang	Compliant
809	AKSUN	A204/Y104	Category S airspace to Category S FIR TOC Point	10 minutes	Khabarovsk		Japan, Fukouka	not compliant
810	LUMIN	Y10/B223	Category S airspace to Category S FIR TOC Point	10 minutes	Khabarovsk		Japan, Fukouka	not compliant
811	ODERI	B932	Category S airspace to Category S FIR TOC Point	10 minutes	Khabarovsk		Japan, Fukouka	not compliant

S/No.	TOC Points	ATS Routes	Category of Airspace to FIR TOC Point (Inbound only)	Minimum horizontal separation standard	Inbound Transferring FIR	Remarks/Route Restrictions	Accepting FIR	Seamless ANS Plan compliance?
812	BISIV	G583/Y116	Category S airspace to Category S FIR TOC Point	20nm	Khabarovsk		Japan, Fukouka	not compliant
813	ANIMO	B337/Y114	Category S airspace to Category S FIR TOC Point	20nm	Khabarovsk		Japan, Fukouka	not compliant
814	IGROD	Y301/Y304/ Y347/Y377/ B451	Category S airspace to Category S FIR TOC Point	15nm	Khabarovsk		Japan, Fukouka	not compliant
815	SAPRA	G585/Y16/Y 38/Y599(Y 685)	Category S airspace to Category S FIR TOC Point	20nm	Incheon		Japan, Fukouka	not compliant
816	LANAT	G597/Y51/Y 597/Y71(Y 697)	Category S airspace to Category S FIR TOC Point	20nm	Incheon		Japan, Fukouka	not compliant
817	IGRAS	B332/Y332(/Z56)	Category S airspace to Category S FIR TOC Point	20nm	Incheon		Japan, Fukouka	not compliant
818	ANDOL	L512	Category S airspace to Category S FIR TOC Point	20nm	Incheon		Japan, Fukouka	not compliant
819	MEVIN	B462	Category S airspace to Category S FIR TOC Point	15 minutes	Manila	Category R/S airspace to Category R/S FIR TOC Point Inbound(northeast bound) altitudes are FL290, FL310, FL320, FL350, FL360, FL390 and FL400 due to FLAS in Manila FIR.	Japan, Fukouka	not compliant
820	BISIG	A582	Category S airspace to Category S FIR TOC Point	15 minutes	Manila	Category R/S airspace to Category R/S FIR TOC Point	Japan, Fukouka	not compliant
821	LEBIX	N884	Category S airspace to Category S FIR TOC Point	15 minutes	Manila	Category R/S airspace to Category R/S FIR TOC Point	Japan, Fukouka	not compliant
822	KALEK	Y206	Category S airspace to Category S FIR TOC Point	20nm	Incheon		Japan, Fukouka	not compliant
823	INVOK	G339/Y208	Category S airspace to Category S FIR TOC Point	20nm	Incheon		Japan, Fukouka	not compliant
824	APELA	A582	Category S airspace to Category S FIR TOC Point	20nm	Incheon		Japan, Fukouka	not compliant
825	BESNA	Y209	Category S airspace to Category S FIR TOC Point	20nm	Incheon		Japan, Fukouka	not compliant
826	RUGMA	A586/Y579	Category S airspace to Category S FIR TOC Point	20nm	Incheon		Japan, Fukouka	not compliant
827	ONIKU	A593/Y592	Category S airspace to Category S FIR TOC Point	20nm	Incheon		Japan, Fukouka	not compliant
828	BEDAR	Y591	Category S airspace to Category S FIR TOC Point	20nm	Incheon	Inbound(east bound) altitudes are FL250, FL290, FL310 and FL390 due to FLAS in the AKARA-FUKUE corridor of Incheon FIR.	Japan, Fukouka	not compliant
829	SAMDO	A595	Category S airspace to Category S FIR TOC Point	20nm	Incheon		Japan, Fukouka	not compliant
830	ATOTI	Y741/B576	Category S airspace to Category S FIR TOC Point	30nm	Incheon		Japan, Fukouka	not compliant
831	ATOTI	Y741/B576	Category S airspace to Category S FIR TOC Point	60nm	Incheon		Japan, Fukouka	not compliant
832	MUGUS	Y742	Category S airspace to Category S FIR TOC Point	30nm	Incheon		Japan, Fukouka	not compliant
833	APITO	AKARA- APITO- MIKES	Category S airspace to Category S FIR TOC Point	15 minutes	Shanghai		Japan, Fukouka	not compliant
834	BULAN	A1/Y751	Category S airspace to Category S FIR TOC Point	20 or 60nm depending on the destination	Taipei		Japan, Fukouka	not compliant
835	MOLKA	M750	Category S airspace to Category S FIR TOC Point	20nm	Taipei		Japan, Fukouka	not compliant
836	SALMI	B576/Y742/ Y743	Category S airspace to Category S FIR TOC Point	30nm	Taipei		Japan, Fukouka	not compliant
837	LIPLO	Y741	Category S airspace to Category S FIR TOC Point	30nm	Taipei		Japan, Fukouka	not compliant
838	BULAN	A1/Y751	Category S airspace to Category S FIR TOC Point	60nm	Taipei		Japan, Fukouka	not compliant
839	SALMI	B576/Y742/ Y743	Category S airspace to Category S FIR TOC Point	20 or 60nm depending on the destination	Taipei		Japan, Fukouka	not compliant
840	NIPPI	R220	Category S airspace to Category S FIR TOC Point	10 minutes/30 or 50nm for PBCS aircraft	Anchorage		Japan, Fukouka	not compliant
841	OMOTO	R580	Category S airspace to Category S FIR TOC Point	10 minutes/30 or 50nm for PBCS aircraft	Anchorage		Japan, Fukouka	not compliant
842	AKISU	R591	Category S airspace to Category S FIR TOC Point	10 minutes/30 or 50nm for PBCS aircraft	Anchorage		Japan, Fukouka	not compliant
843	CUTEE	G344	Category R/S airspace to Category R FIR TOC Point	10 minutes/30 or 50nm for PBCS aircraft	Anchorage		Japan, Fukouka	not compliant
844	EMNAK		Category R/S airspace to Category R FIR TOC Point	10 minutes/30 or 50nm for PBCS aircraft	Oakland		Japan, Fukouka	not compliant
845	DEWOP		Category R/S airspace to Category R FIR TOC Point	10 minutes/30 or 50nm for PBCS aircraft	Oakland		Japan, Fukouka	not compliant
846	GNOSS		Category R/S airspace to Category R FIR TOC Point	10 minutes/30 or 50nm for PBCS aircraft	Oakland		Japan, Fukouka	not compliant
847	VILEY		Category R/S airspace to Category R FIR TOC Point	10 minutes/30 or 50nm for PBCS aircraft	Oakland		Japan, Fukouka	not compliant
848	CANOE		Category R/S airspace to Category R FIR TOC Point	10 minutes/30 or 50nm for PBCS aircraft	Oakland		Japan, Fukouka	not compliant
849	BEEBO	G223	Category R/S airspace to Category R FIR TOC Point	10 minutes/30 or 50nm for PBCS aircraft	Oakland		Japan, Fukouka	not compliant
850	ATIGO	B452	Category R/S airspace to Category R FIR TOC Point	10 minutes/30 or 50nm for PBCS aircraft	Oakland		Japan, Fukouka	not compliant

S/No.	TOC Points	ATS Routes	Category of Airspace to FIR TOC Point (Inbound only)	Minimum horizontal separation standard	Inbound Transferring FIR	Remarks/Route Restrictions	Accepting FIR	Seamless ANS Plan compliance?
851	TEGOD	A337	Category R/S airspace to Category R FIR TOC Point	10 minutes/30 or 50nm for PBCS aircraft	Oakland		Japan, Fukouka	not compliant
852	OMLET	B586	Category R/S airspace to Category R FIR TOC Point	10 minutes/30 or 50nm for PBCS aircraft	Oakland		Japan, Fukouka	not compliant
853	MONPI	A597	Category R/S airspace to Category R FIR TOC Point	10 minutes/30 or 50nm for PBCS aircraft	Oakland		Japan, Fukouka	not compliant
854	PAKDO	G339	Category R/S airspace to Category R FIR TOC Point	10 minutes/30 or 50nm for PBCS aircraft	Oakland		Japan, Fukouka	not compliant
855	KEITH	R584/R595/	Category R/S airspace to Category R FIR TOC Point	10 minutes/30 or 50nm for PBCS aircraft	Oakland		Japan, Fukouka	not compliant
856	GURAG	A590	Category R/S airspace to Category R FIR TOC Point	10 minutes MNT	Manila		Japan, Fukouka	not compliant
857	BIKOK	N640/M641	Category S airspace to Category S FIR TOC Point	50NM/30NM*	Chennai	RNP10 aircraft, prior coordination *30NM for TFC landing at Sri Lanka,	Sri Lanka, Colombo	not compliant
858	IDIBI	G325	Category S airspace to Category S FIR TOC Point	50NM	Chennai	RNP10 aircraft, prior coordination	Sri Lanka, Colombo	not compliant
859	ATETA	M300	Category S airspace to Category S FIR TOC Point	50NM	Chennai	RNP10 aircraft, prior coordination	Sri Lanka, Colombo	not compliant
860	SAGOR	A465	Category S airspace to Category S FIR TOC Point	50NM/30NM*	Chennai	RNP10 aircraft, prior coordination *30NM for TFC landing at Sri Lanka,	Sri Lanka, Colombo	not compliant
861	DUGOS	P762	Category S airspace to Category S FIR TOC Point	50NM	Chennai	RNP10 aircraft, prior coordination	Sri Lanka, Colombo	not compliant
862	SULTO	L645	Category R/S airspace to Category R FIR TOC Point	50NM	Chennai	RNP10 aircraft, prior coordination	Sri Lanka, Colombo	Compliant
863	SEBLO	G465	Category S airspace to Category S FIR TOC Point	50NM/30NM*	Male	prior coordination*30NM for TFC landing	Sri Lanka, Colombo	not compliant
864	ANIVE	M512	Category S airspace to Category S FIR TOC Point	50NM/30NM*	Male	prior coordination*30NM for TFC landing	Sri Lanka, Colombo	not compliant
865	PADLA	G454	Category S airspace to Category S FIR TOC Point	50NM/30NM*	Male	prior coordination*30NM for TFC landing	Sri Lanka, Colombo	not compliant
866	MANRU	M513	Category S airspace to Category S FIR TOC Point	50NM/30NM*	Male	prior coordination*30NM for TFC landing	Sri Lanka, Colombo	not compliant
867	UBKIN	P756	Category S airspace to Category S FIR TOC Point	50NM	Male	RNP10 aircraft, prior coordination	Sri Lanka, Colombo	not compliant
868	TOPIN	M300	Category R/S airspace to Category R FIR TOC Point	50NM	Jakarta	RNP10 aircraft, prior coordination	Sri Lanka, Colombo	Compliant
869	NIXUL	P627	Category R/S airspace to Category R FIR TOC Point	50NM	Jakarta	RNP10 aircraft, prior coordination	Sri Lanka, Colombo	Compliant
870	NIXUL	P570	Category R/S airspace to Category R FIR TOC Point	50NM	Jakarta	RNP10 aircraft, prior coordination	Sri Lanka, Colombo	Compliant
871	NISOK	P756	Category R/S airspace to Category R FIR TOC Point	50NM	Jakarta	RNP10 aircraft, prior coordination	Sri Lanka, Colombo	Compliant
872	NISOK	L896	Category R/S airspace to Category R FIR TOC Point	50NM	Jakarta	RNP10 aircraft, prior coordination	Sri Lanka, Colombo	Compliant
873	SELSU	M766	Category R/S airspace to Category R FIR TOC Point	50NM	Jakarta	RNP10 aircraft, prior coordination	Sri Lanka, Colombo	Compliant
874	KETIV	L897	Category R/S airspace to Category R FIR TOC Point	50NM	Jakarta	RNP10 aircraft, prior coordination	Sri Lanka, Colombo	Compliant
875	KETIV	N628	Category R/S airspace to Category R FIR TOC Point	50NM	Jakarta	RNP10 aircraft, prior coordination	Sri Lanka, Colombo	Compliant
876	KETIV	L774	Category R/S airspace to Category R FIR TOC Point	50NM	Jakarta	RNP10 aircraft, prior coordination	Sri Lanka, Colombo	Compliant
877	ELATI	N640	Category R/S airspace to Category R FIR TOC Point	50NM	Melbourne	RNP10 aircraft, prior coordination	Sri Lanka, Colombo	Compliant
878	ELATI	L774	Category R/S airspace to Category R FIR TOC Point	50NM	Melbourne	RNP10 aircraft, prior coordination	Sri Lanka, Colombo	Compliant
879	DOGAR	M641	Category R/S airspace to Category R FIR TOC Point	50NM	Melbourne	RNP10 aircraft, prior coordination	Sri Lanka, Colombo	Compliant
880	KADAP	P627	Category R/S airspace to Category R FIR TOC Point	50NM	Melbourne	RNP10 aircraft, prior coordination	Sri Lanka, Colombo	Compliant
881	DADAR	N628	Category R/S airspace to Category R FIR TOC Point	50NM	Melbourne	RNP10 aircraft, prior coordination	Sri Lanka, Colombo	Compliant
882	DADAR	L894	Category R/S airspace to Category R FIR TOC Point	50NM	Melbourne	RNP10 aircraft, prior coordination	Sri Lanka, Colombo	Compliant
883	SUNAN	L894	Category R/S airspace to Category R FIR TOC Point	10 MNT	Male		Sri Lanka, Colombo	not compliant