



Noida  
International Airport

# Masterplan

---

A company of

**Zurich Airport  
International**

Greenfield airport development in the National Capital Region of Delhi NCR,  
India

**Anurag Shandilya – Head of Airport Operations**

**Kelvin Amernath – Senior Master Planner**

ICAO – ACI Aerodrome Seminar, 29<sup>th</sup> June 2023

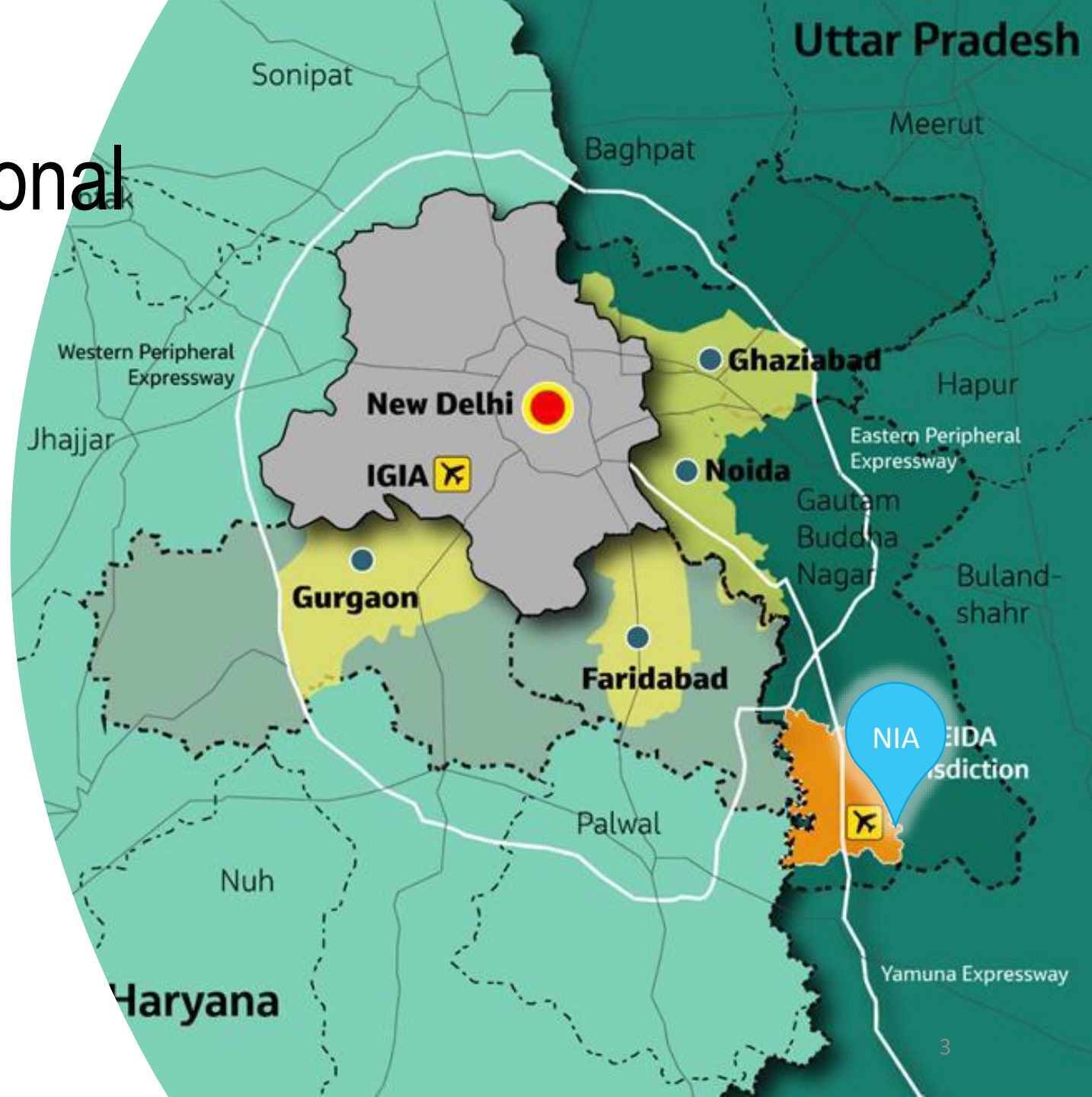
# Noida International Airport (NIA)

A unique new gateway to the world, to the city of Delhi and to the state of Uttar Pradesh



# About Noida International Airport

- A second airport for Indian National Capital Region (NCR)
- India's First Multi Airport System in a metro
- 70km South-East of New Delhi
- Opening end of 2024



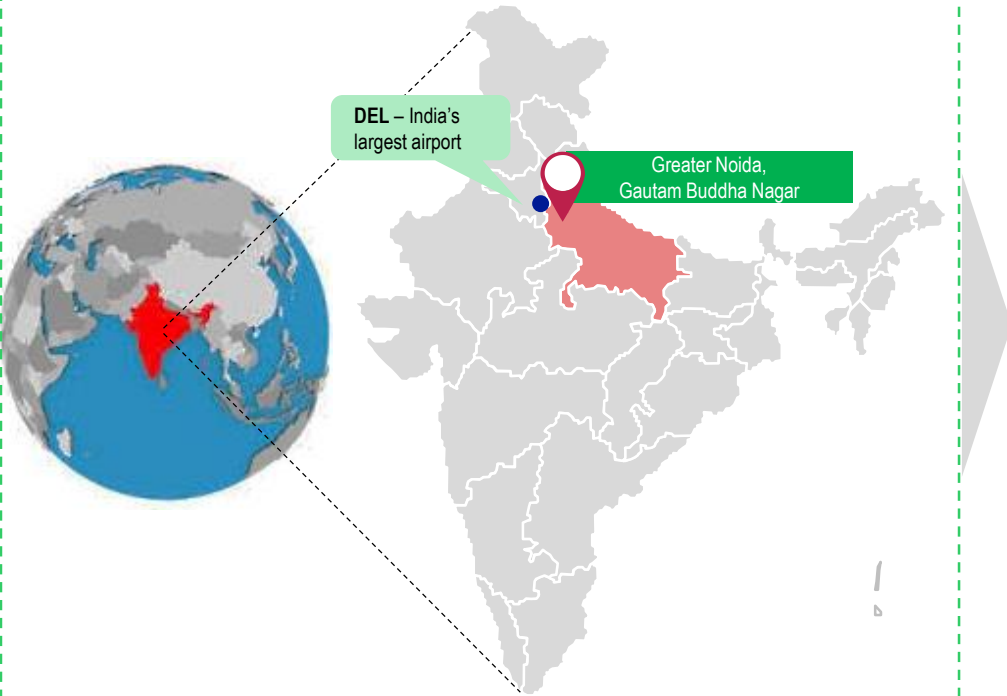
# Project Introduction



# Upcoming greenfield airport in India's fastest growing region

## Location of Noida International Airport (NIA)

Strategically located with seamless access to East, West and Central India



Greater Noida region offers world class amenities, excellent physical and social infrastructure and is seamless connected

## WHAT DOES THE REGION OFFER?

### Uttar Pradesh - One of the Largest economies

India's 3<sup>rd</sup> largest economy with >8% contribution to India's GDP

### Close to India's largest & fastest region

<2 hours away from India's largest & fastest growing DEL - NCR

### Abundance of land area

Abundance of land ensures unconstrained expansion based on passenger demand

### The largest consumer market in India

UP is the most populous state in India with population of 240 Mn

### Significant contributor to India's largest airport

DEL's ~1/3<sup>rd</sup> of pax traffic and 40-50% of cargo comes from Uttar Pradesh

### Seamlessly connecting UP to the World

Well connected to major cities (Delhi, Noida, Agra etc.) through rail, road and expressways

# Noida International Airport (NIA) The greenfield airport site in 2020...



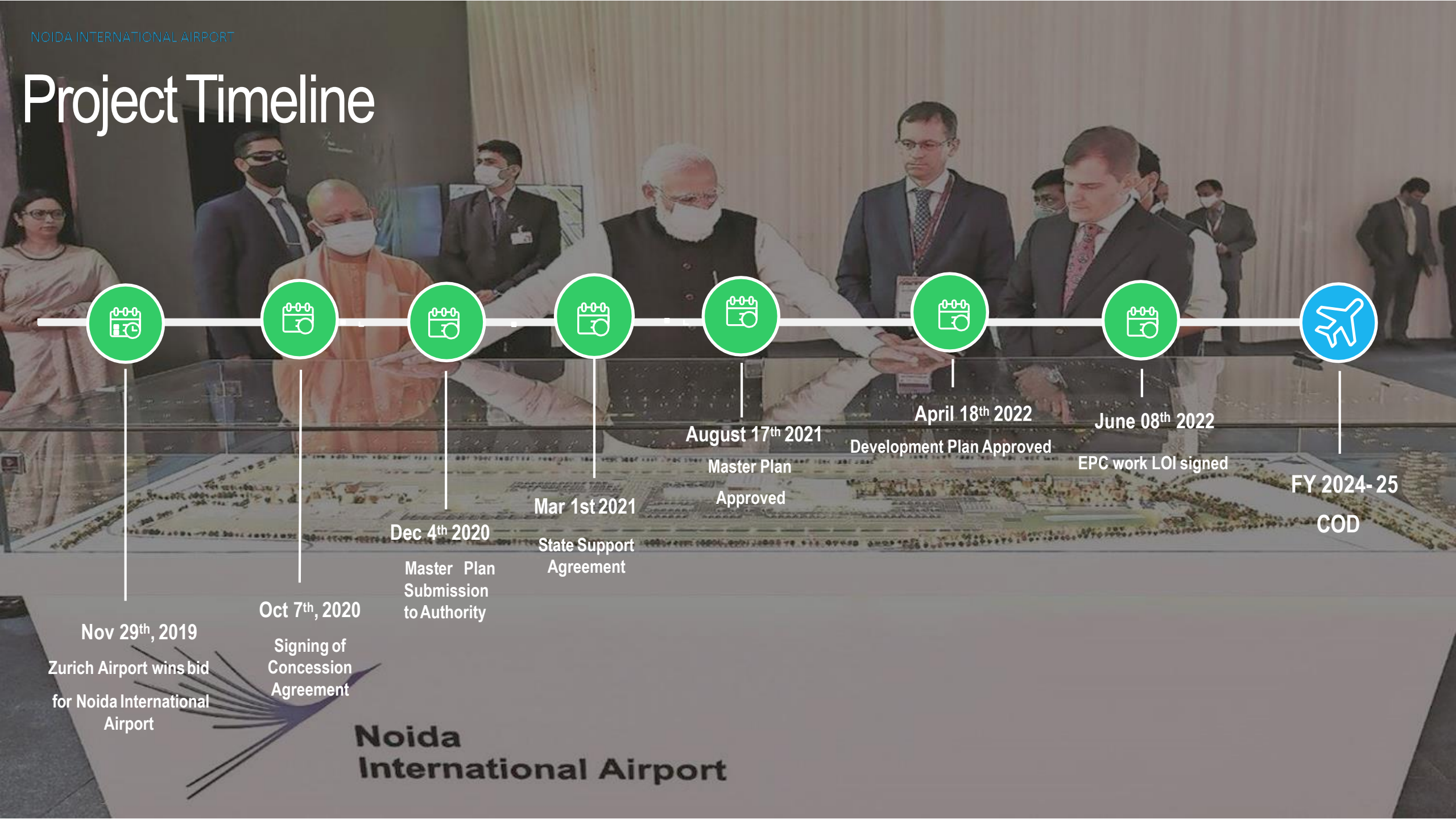
...the site in January 2023...



# ....the airport in January 2025



# Project Timeline



Nov 29<sup>th</sup>, 2019  
Zurich Airport wins bid  
for Noida International  
Airport

Oct 7<sup>th</sup>, 2020  
Signing of  
Concession  
Agreement

Dec 4<sup>th</sup> 2020  
Master Plan  
Submission  
to Authority

Mar 1<sup>st</sup> 2021  
State Support  
Agreement

August 17<sup>th</sup> 2021  
Master Plan  
Approved

April 18<sup>th</sup> 2022  
Development Plan Approved

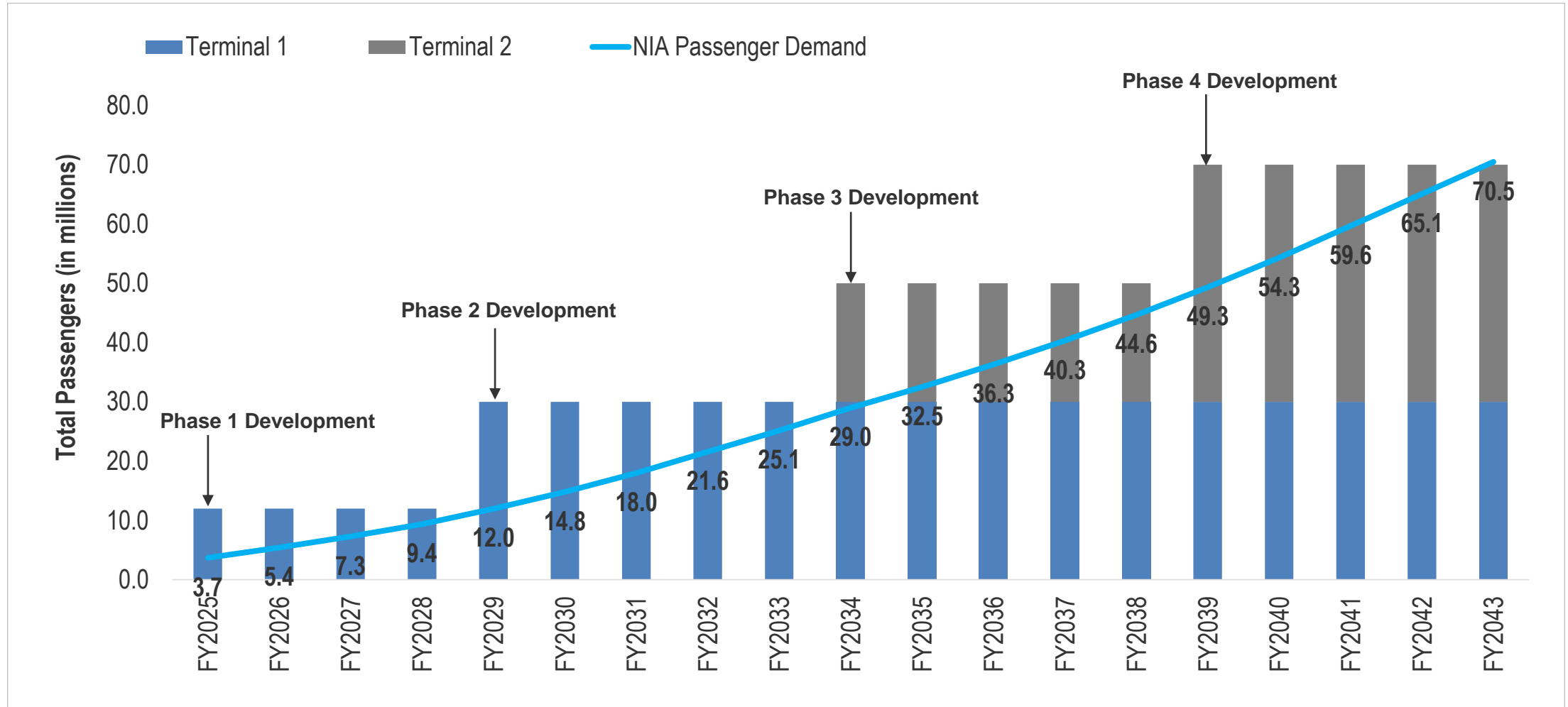
June 08<sup>th</sup> 2022  
EPC work LOI signed

FY 2024-25  
COD

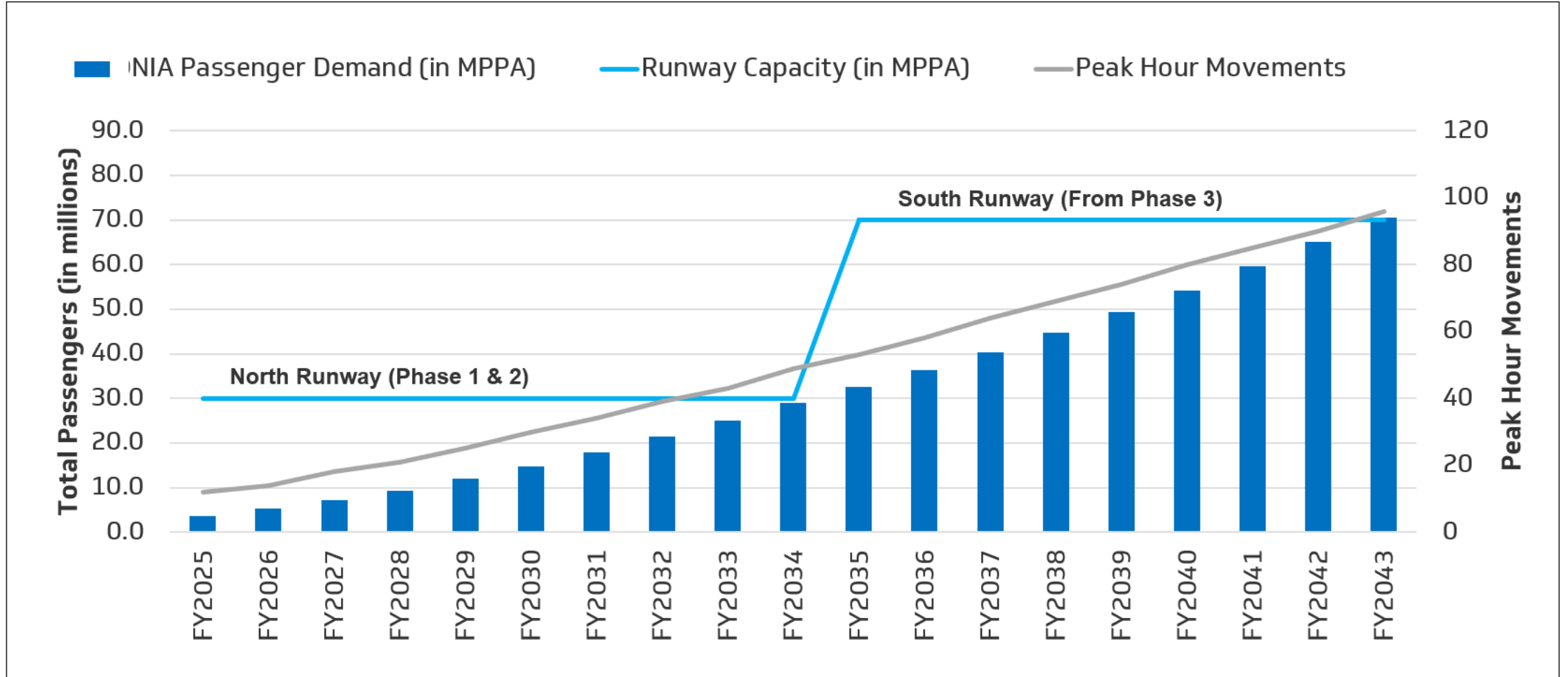


**Noida  
International Airport**

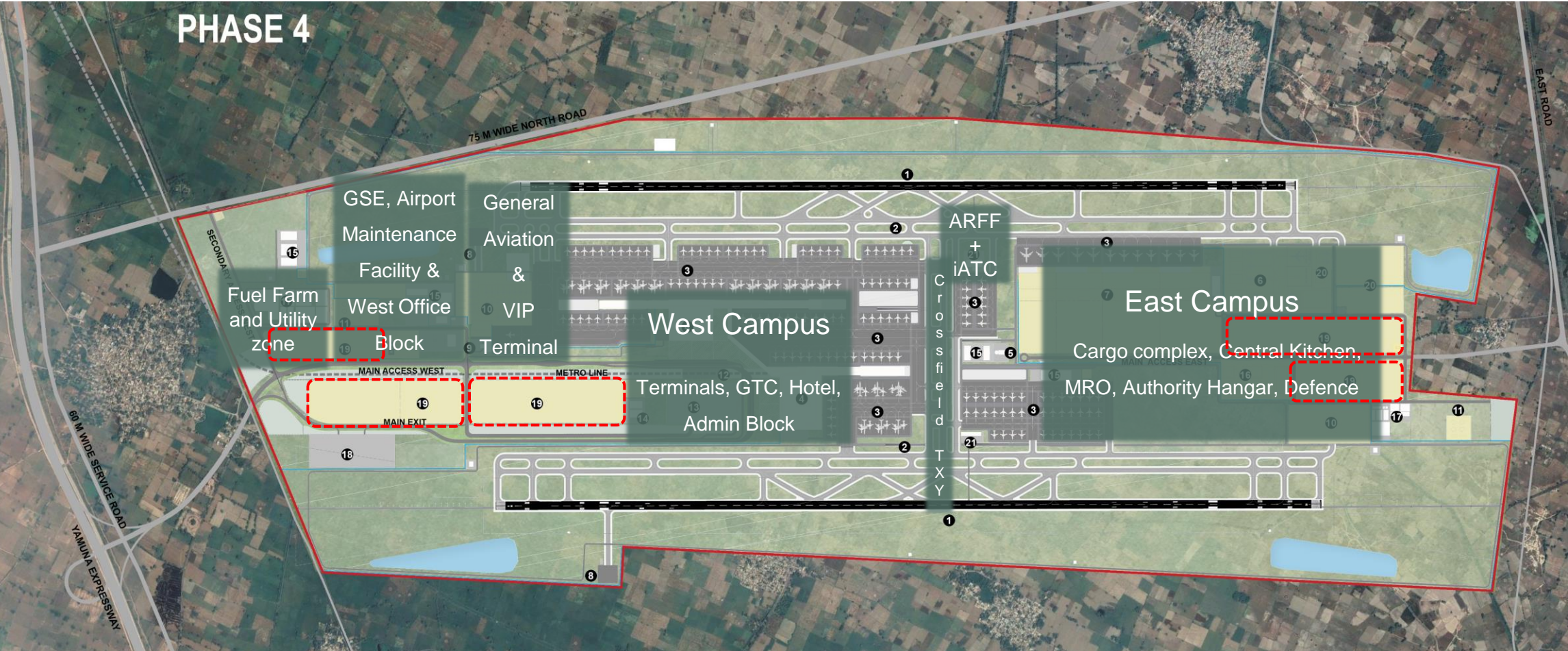
# Forecast and Terminal Development Strategy



# Forecast & Runway Development



# Airport Master Plan Phase 4 (70 MPPA)



- |                           |                    |                     |                   |                          |                              |                                     |
|---------------------------|--------------------|---------------------|-------------------|--------------------------|------------------------------|-------------------------------------|
| 1 Runway                  | 2 Taxiway          | 3 Apron             | 4 Terminal        | 5 ATC                    | 6 MRO                        | 7 Cargo                             |
| 8 Isolation Bay           | 9 VIP Terminal     | 10 General Aviation | 11 Fuel Farm      | 12 Metro Station         | 13 GTC                       | 14 Airport & Airline Administration |
| 15 Maintenance Facilities | 16 Flight Catering | 17 Utilities Zone   | 18 Remote Staging | 19 City Side Development | 20 MoD and Authority Reserve | 21 ARFF                             |



Phase I  
12 mppa



Phase II  
30 mppa

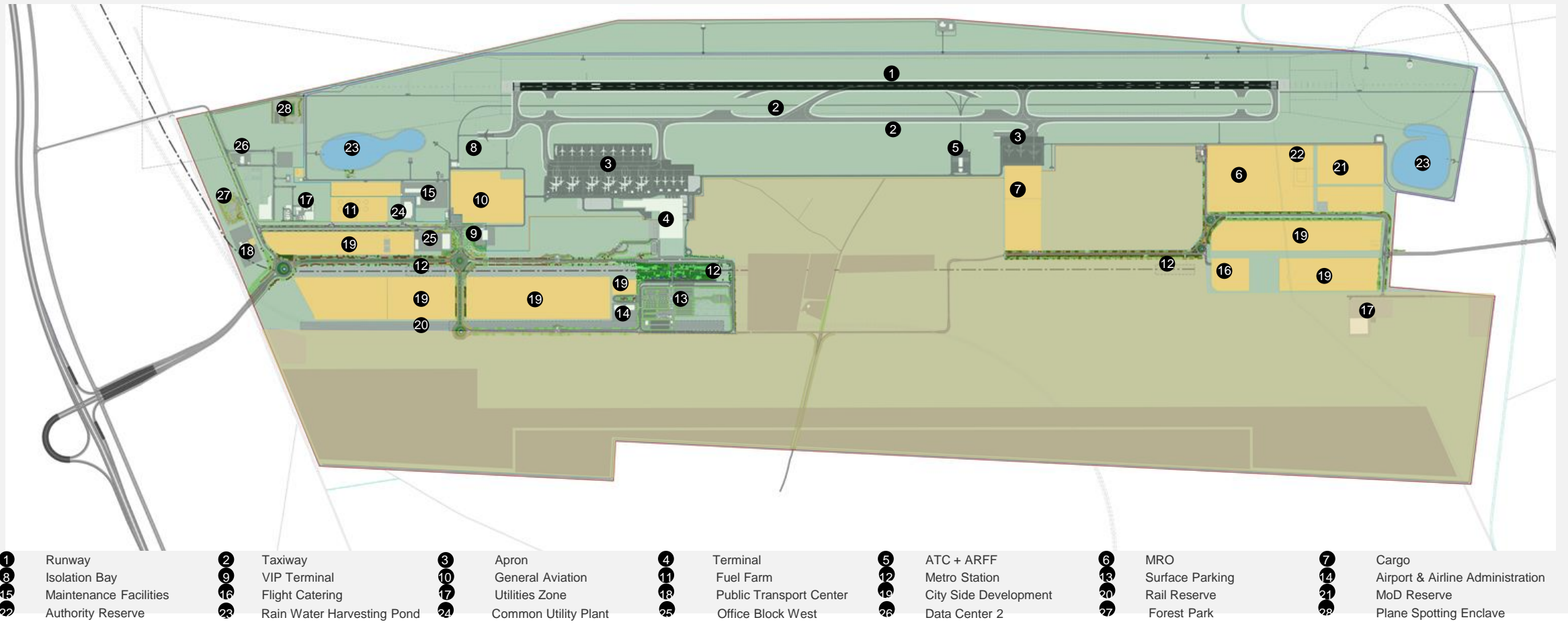


Phase III  
50 mppa

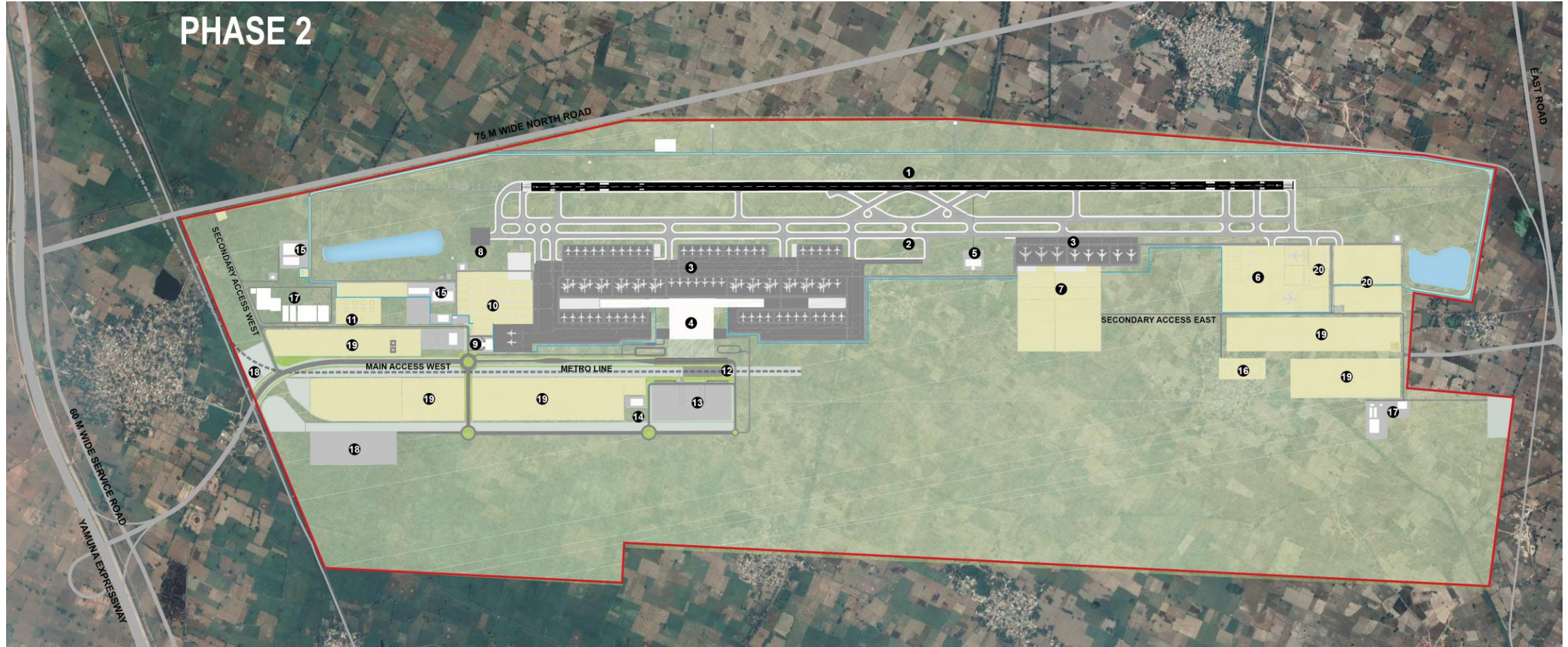


Phase IV  
70 mppa

# Airport Master Plan Phase 1 (12 MPPA)

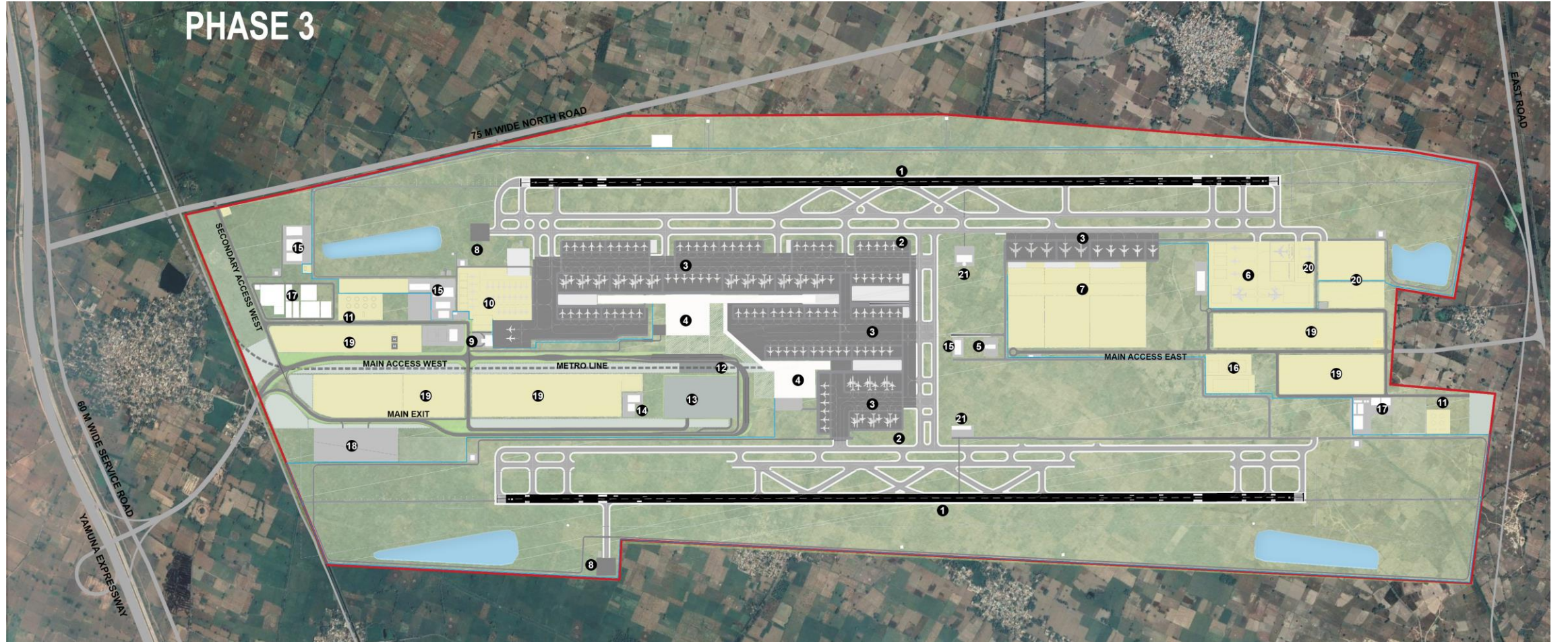


# Airport Master Plan Phase 2



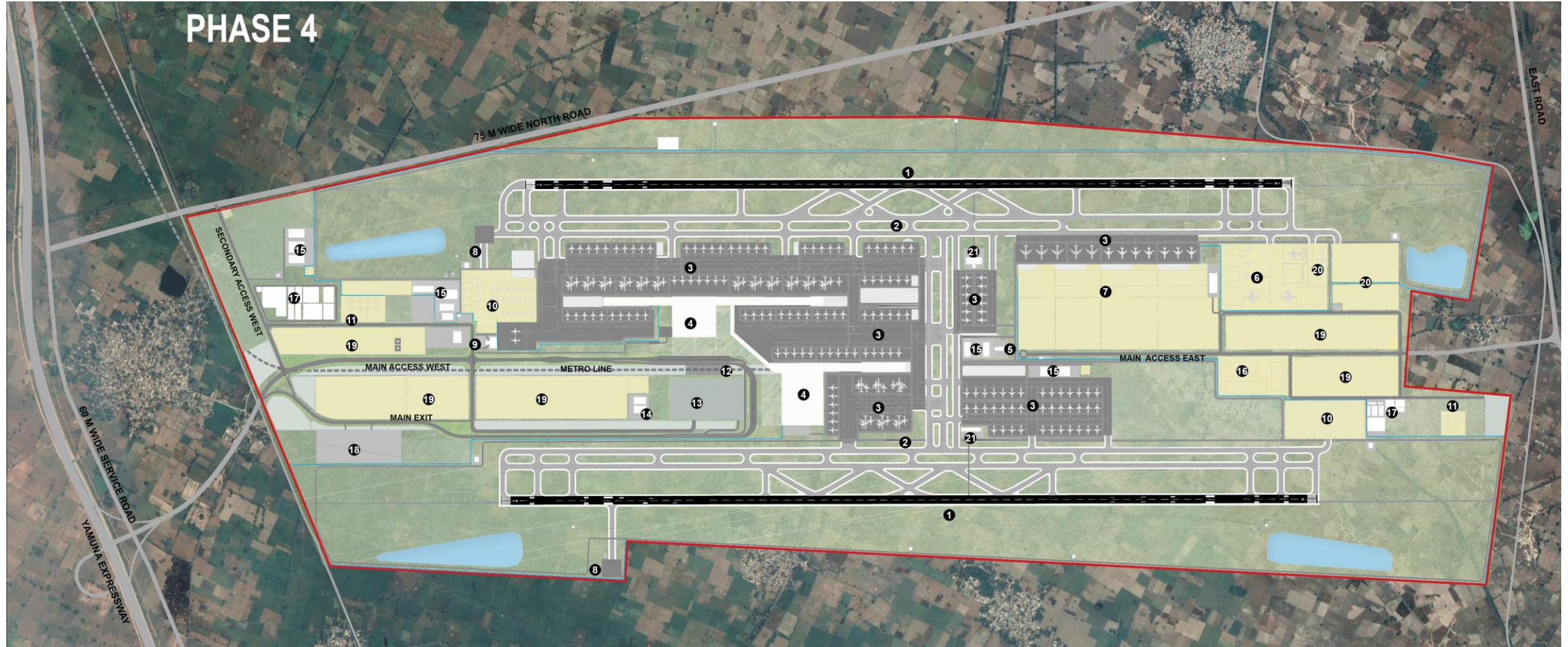
- |    |                       |    |                                  |    |                        |    |                   |    |                    |                |
|----|-----------------------|----|----------------------------------|----|------------------------|----|-------------------|----|--------------------|----------------|
| 1  | Runway                | 2  | Taxiway                          | 3  | Apron                  | 4  | Terminal          | 5  | Interim ATC + ARFF | MRO            |
| 7  | Cargo                 | 8  | Isolation Bay                    | 9  | VIP Terminal           | 10 | General Aviation  | 11 | Fuel Farm          | Metro Station  |
| 13 | Surface Parking       | 14 | Airport & Airline Administration | 15 | Maintenance Facilities | 16 | Flight Catering   | 17 | Utilities Zone     | Remote Staging |
| 16 | City Side Development | 20 | Rail Reserve                     | 21 | MoD Reserve            | 22 | Authority Reserve |    |                    |                |

# Airport Master Plan Phase 3



- |    |                        |    |                 |    |                  |    |                |    |                       |    |                           |    |                                  |
|----|------------------------|----|-----------------|----|------------------|----|----------------|----|-----------------------|----|---------------------------|----|----------------------------------|
| 1  | Runway                 | 2  | Taxiway         | 3  | Apron            | 4  | Terminal       | 5  | ATC                   | 6  | MRO                       | 7  | Cargo                            |
| 8  | Isolation Bay          | 9  | VIP Terminal    | 10 | General Aviation | 11 | Fuel Farm      | 12 | Metro Station         | 13 | GTC                       | 14 | Airport & Airline Administration |
| 15 | Maintenance Facilities | 16 | Flight Catering | 17 | Utilities Zone   | 18 | Remote Staging | 19 | City Side Development | 20 | MoD and Authority Reserve | 21 | ARFF                             |

# Airport Master Plan Phase 4 (70 MPPA)

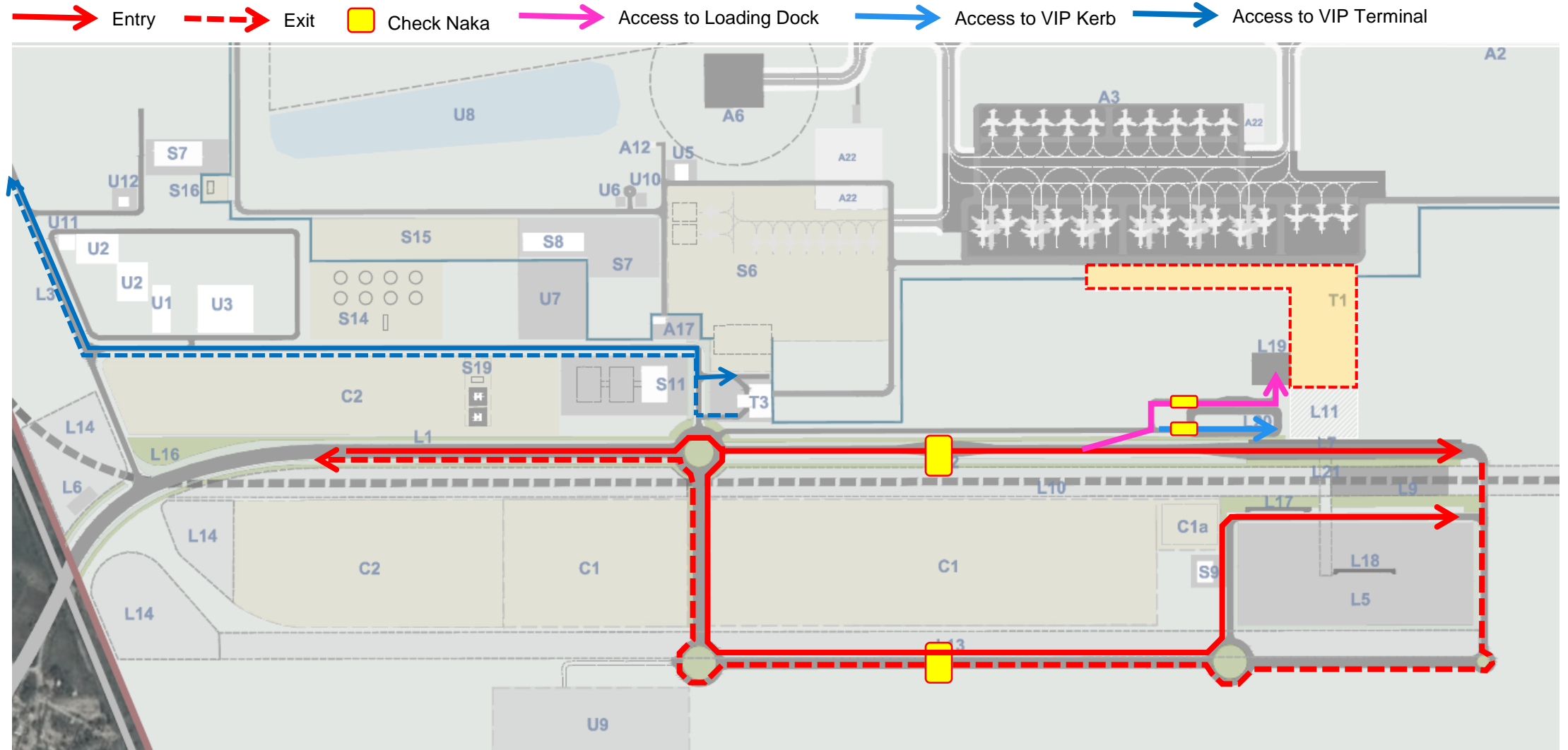


- |                          |                   |                    |                  |                         |                             |                                    |
|--------------------------|-------------------|--------------------|------------------|-------------------------|-----------------------------|------------------------------------|
| ① Runway                 | ② Taxiway         | ③ Apron            | ④ Terminal       | ⑤ ATC                   | ⑥ MRO                       | ⑦ Cargo                            |
| ⑧ Isolation Bay          | ⑨ VIP Terminal    | ⑩ General Aviation | ⑪ Fuel Farm      | ⑫ Metro Station         | ⑬ GTC                       | ⑭ Airport & Airline Administration |
| ⑮ Maintenance Facilities | ⑯ Flight Catering | ⑰ Utilities Zone   | ⑱ Remote Staging | ⑲ City Side Development | ⑳ MoD and Authority Reserve | ㉑ ARFF                             |

# Salient Features

Project details	Phase I	Phase IV
Passenger Capacity	12 mppa	70 mppa
Air Traffic Movements	96,400	489,700
Cargo (Tonnage)	249,600	1,129,400
Cargo & Logistics (sqm)	79,700	407,000
Runway (CAT III & Code F compliant)	North runway 3900m	North & South runways 3900m & 4150m respectively
Apron	28 Stands	186 Stands
Passenger Terminal Building	T1 Terminal (Phase I) 101,590 sqm	T1 and T2 Terminals 488,000 sqm
Fuel Farm	3 x 3300 cu.m 37,000 sqm	8 x 6000 cu.m 56,000 sqm
General Aviation	100,400 sqm	180,700 sqm
Maintenance Repair & Overhaul	40 acres	
Real Estate Development	167 acres	

# Terminal Landside Departure Access (Phase 1)



# Seamless Connectivity

Future proof



Terminal Metro Station  
(Ground Transportation Centre)

High speed Rail station

Metro Station

Helipad

Road Connectivity

Road Connectivity

Public Transportation Centre

# Multi-Modal Cargo Hub

Cargo Gateway to North India



# Construction

- 95% Digitalization of the documentation/design/etc.
- Nano Gen CE -> Reduction of the carbon emissions of the concrete
- Fuel Hydrant connecting all aircraft stands
- The Passenger Terminal Building has Flexible Design for the future

# Project Management

- No barriers to communication (Contractor, Employer, PMC and suppliers use the same information/files cloud)
- Personnel management: No 'corporate' structure with departments and responsibilities, but maintain a 'One Team / One Project' spirit
- Project control: Timelapse capable cameras capturing all the work fronts of the Project



# Operations

- Electric vehicles + EV charging stations
- Efficient operations with mixed stand rotation
- Power in power out remote apron. Reduced taxiing on apron taxi lane
- The forecourt: Mitigate the harshness of the climate and help users enjoy the time before the travel
- Zero emissions approach (energy, waste, water)
- Contactless travel / digital airport

# Project Progress

---

TERMINAL BUILDING



**TERMINAL BUILDING**



**RUNWAY**





ARFF CLSM/PCC and Waterproofing Works



ATC Concreting, Scaffolding and Shuttering, substation earthworks

# NIA at a glance!



# Thank you

