



PUBLIC HEALTH EMERGENCY PREPAREDNESS

**VELANA INTERNATIONAL AIRPORT
MALDIVES AIRPORTS COMPANY LIMITED**

PRESENTER



Azina Abdul Matheen
General Manager, Airport Emergency & Business Continuity
Airport Emergency Services
Maldives Airports Company Limited
15 Years in Aviation Industry

Academic Background:

- Bachelors of Arts in Business Administration – University of Bedfordshire
- Associate Degree in Business Management – Pearson
- Disaster Management (1Year) – TATA Institute of Social Sciences
- Diploma In Airside Operations - ACI

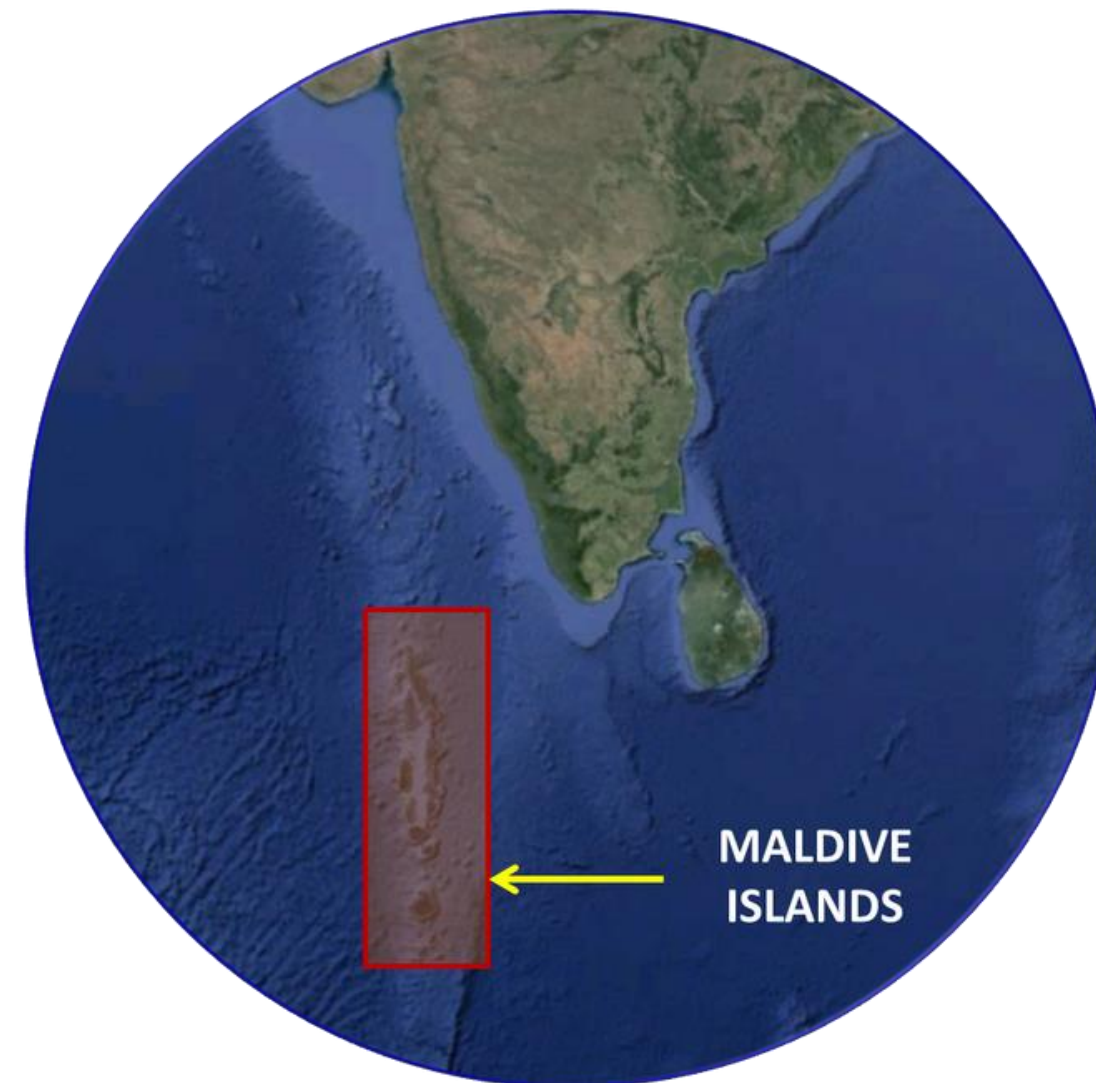
Professional Trainings:

- Certificate in Airport Rescue and Fire Fighting – ACI
- Lead Auditor – ISO9001:2015 Quality Management
- SMS Trainer – IATA/ACI
- Certificate of WORC (The world of Red Cross & Red Crescent)
- Emergency Management – ICAO/SAA
- Health Emergency Risk Compliance Management – EIFEC
- Emergency & Crisis Management – Ciconia Aviation Services
- Aircraft Recovery – KUNZ
- Root cause Analysis – IATA
- Document Control System – IATA
- Overview of ICAO ASM Part7:Airport Emergency Plan – Malaysia Airports
- Aerodrome Emergency Exercise Design – Malaysia Airports
- ICAO Crisis Management

MALDIVES



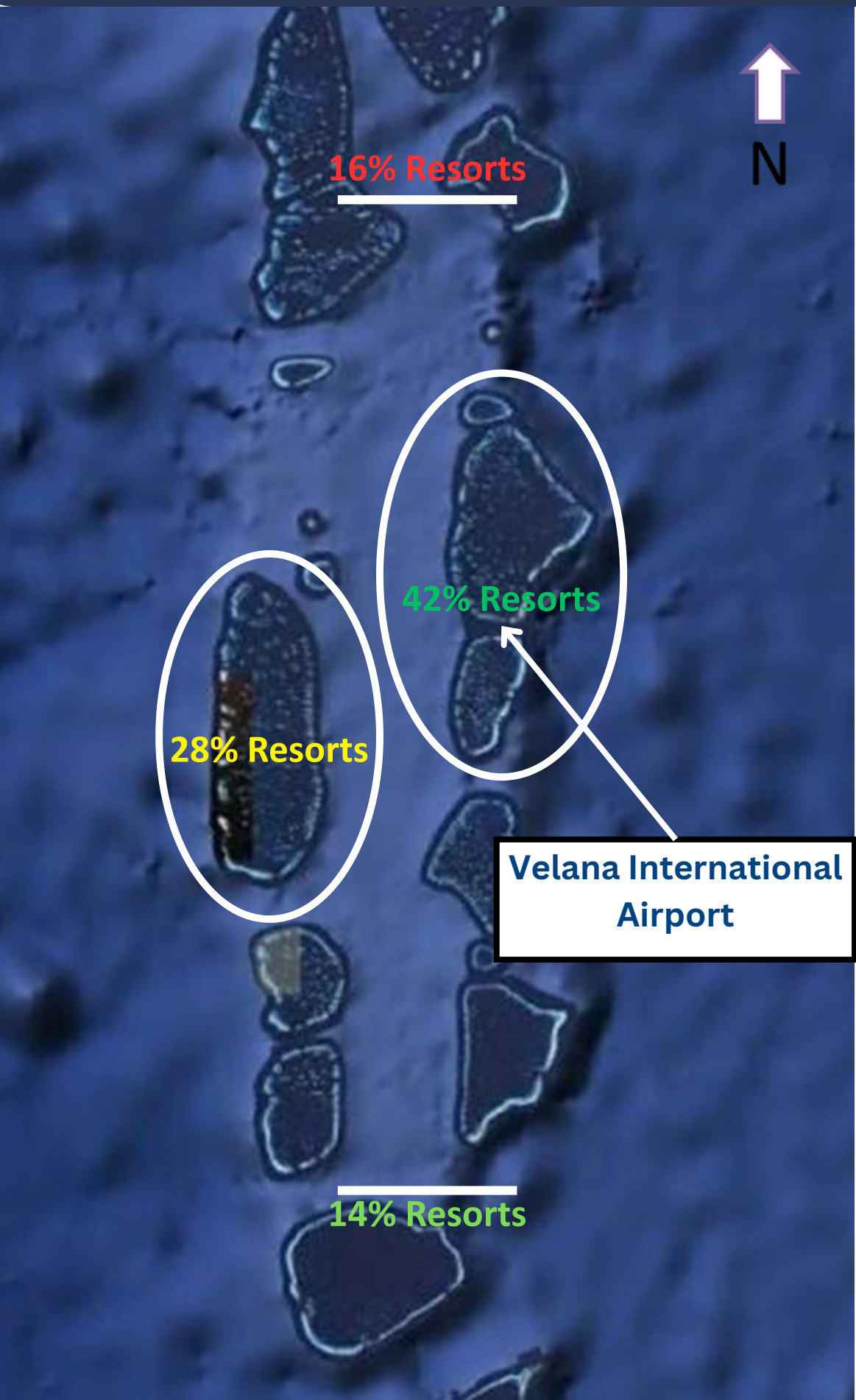
The Republic of the Maldives is a chain of around 1200 islands stretching 750km across the Indian Ocean with the northernmost island at 7°06" N and the southernmost island just crossing the Equator at 0° 42" S.



Made up of:

- 99% Water
- 1% Land

MALDIVES



Islands	1192
Inhabited Islands	200
Tourist Resorts	102
International Airports	05
Domestic Airports	14
Platforms for Seaplane Operations	100+
Population	436,330

Tourist Resort Distribution within the Maldives	
Male' Atoll (Around the Capital City Male')	42%
Ari Atoll (West of Capital)	28%
Northern Atolls	16%
Southern Atolls	14%

MALDIVES AIRPORTS COMPANY LIMITED

**Operator of Velana International
Airport and Ground Handling Agent**

**100% government owned limited
liability company governed by
board of directors appointed by
the President of Maldives.**

Services:

- Operational services
- Subsidiary Company – MNATS
(Air Navigation Services)
- Fuel Services
- Emergency Services
- Commercial (Aero / Non-Aero)



VELANA INTERNATIONAL AIRPORT (VIA)



VIA is the leading International Airport. On an average (daily) it handles:

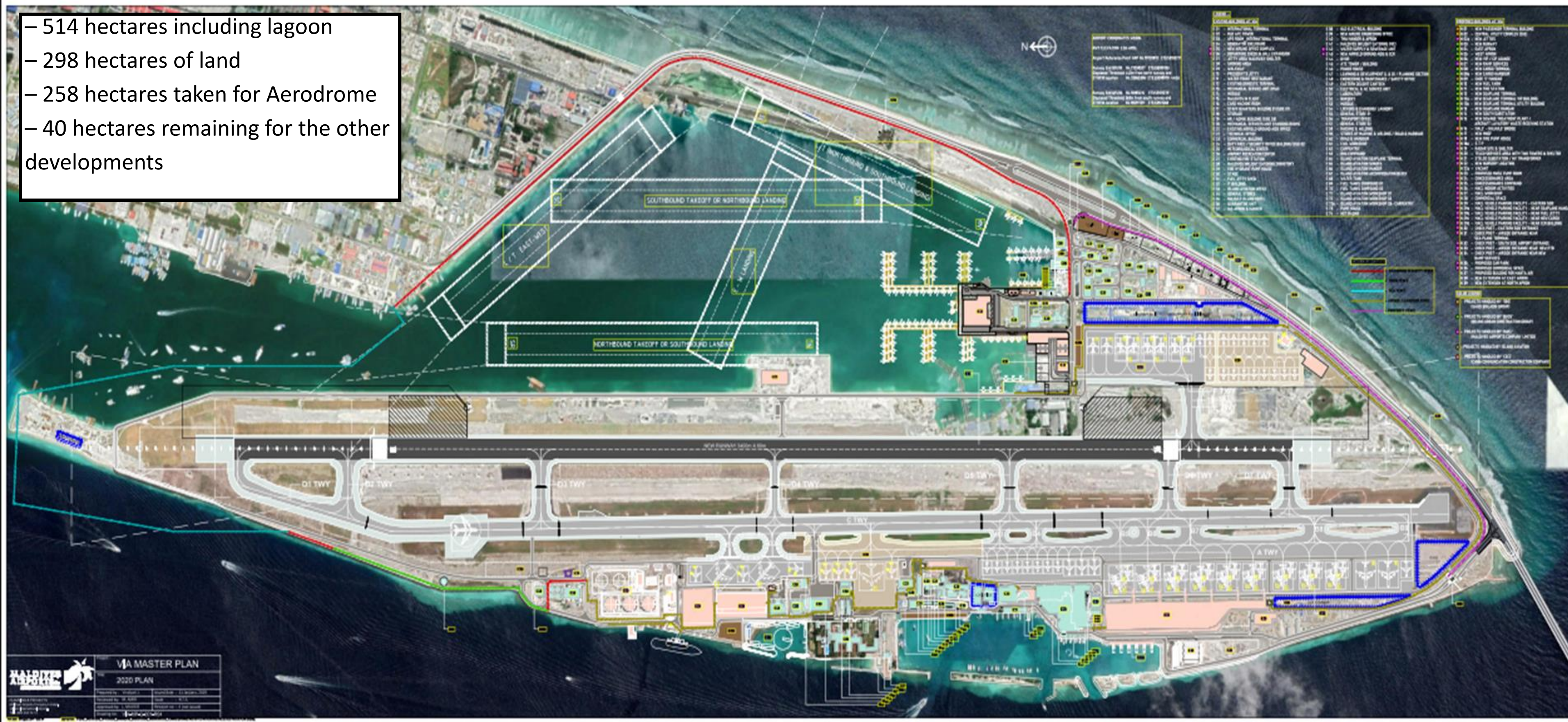
- 85 International Movements
- 85 Domestic Movements
- 400 Seaplane Movements

- 62% of the tourists arriving VIA travel to the Resorts on seaplanes.
- Seaplanes carry more that **1,000,000** passengers annually.



VELANA INTERNATIONAL AIRPORT - ONGOING DEVELOPMENTS

- 514 hectares including lagoon
- 298 hectares of land
- 258 hectares taken for Aerodrome
- 40 hectares remaining for the other developments



VELANA INTERNATIONAL AIRPORT - ONGOING DEVELOPMENTS

Code F Runway

Apron (2F, 12E, 6C upper, 8C (12 MARS))

PTB

Fuel Farm

Cargo

Seaplane Terminal (75 docks)

Maintenance Facilities

Water Runways

VIP / CIP

Fire Station

Security Fence

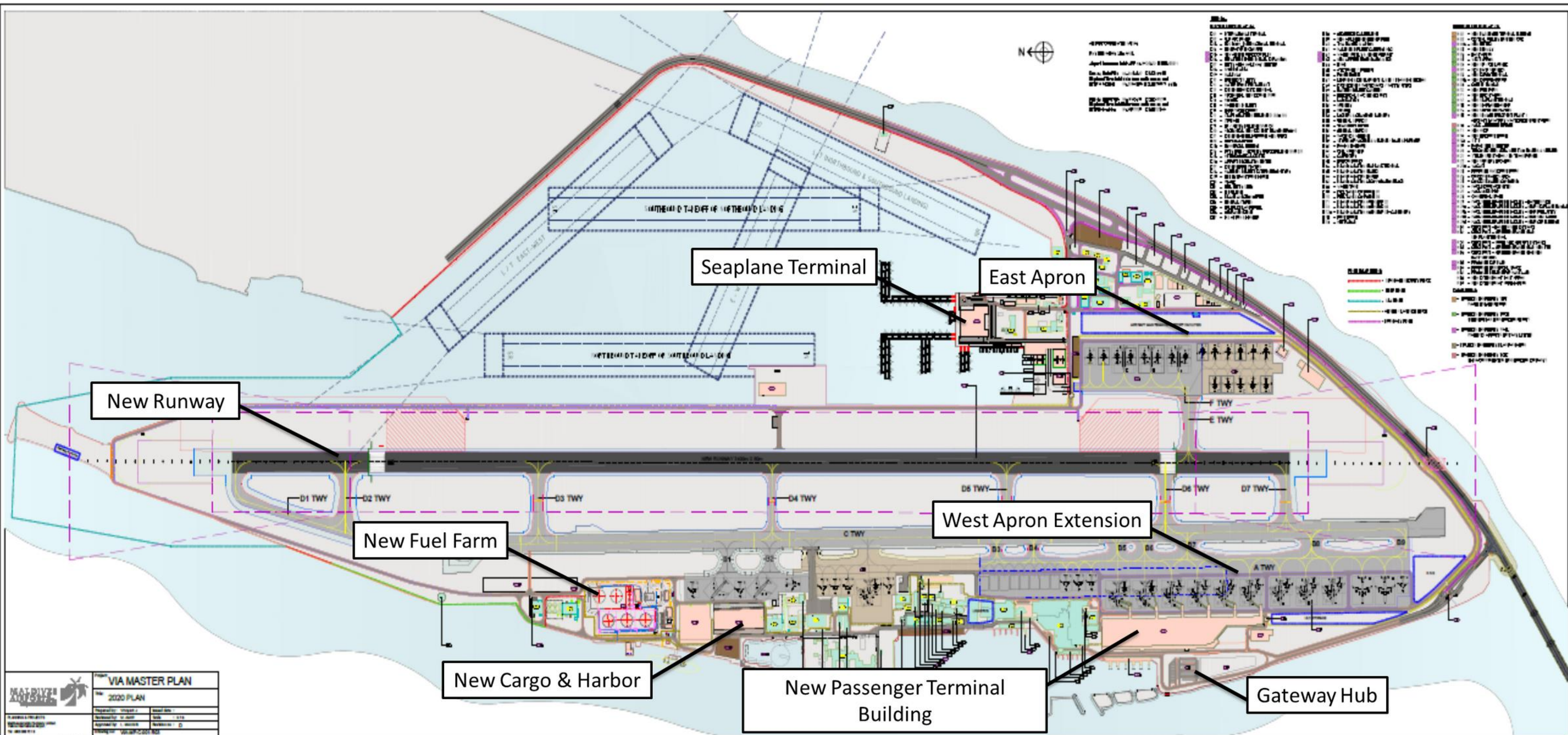
Other Facilities

**Aprons (1F, 2E, 7C upper, 16C (12 MARS)
(3F, 14E, 13C upper, 24C (12 MARS))**

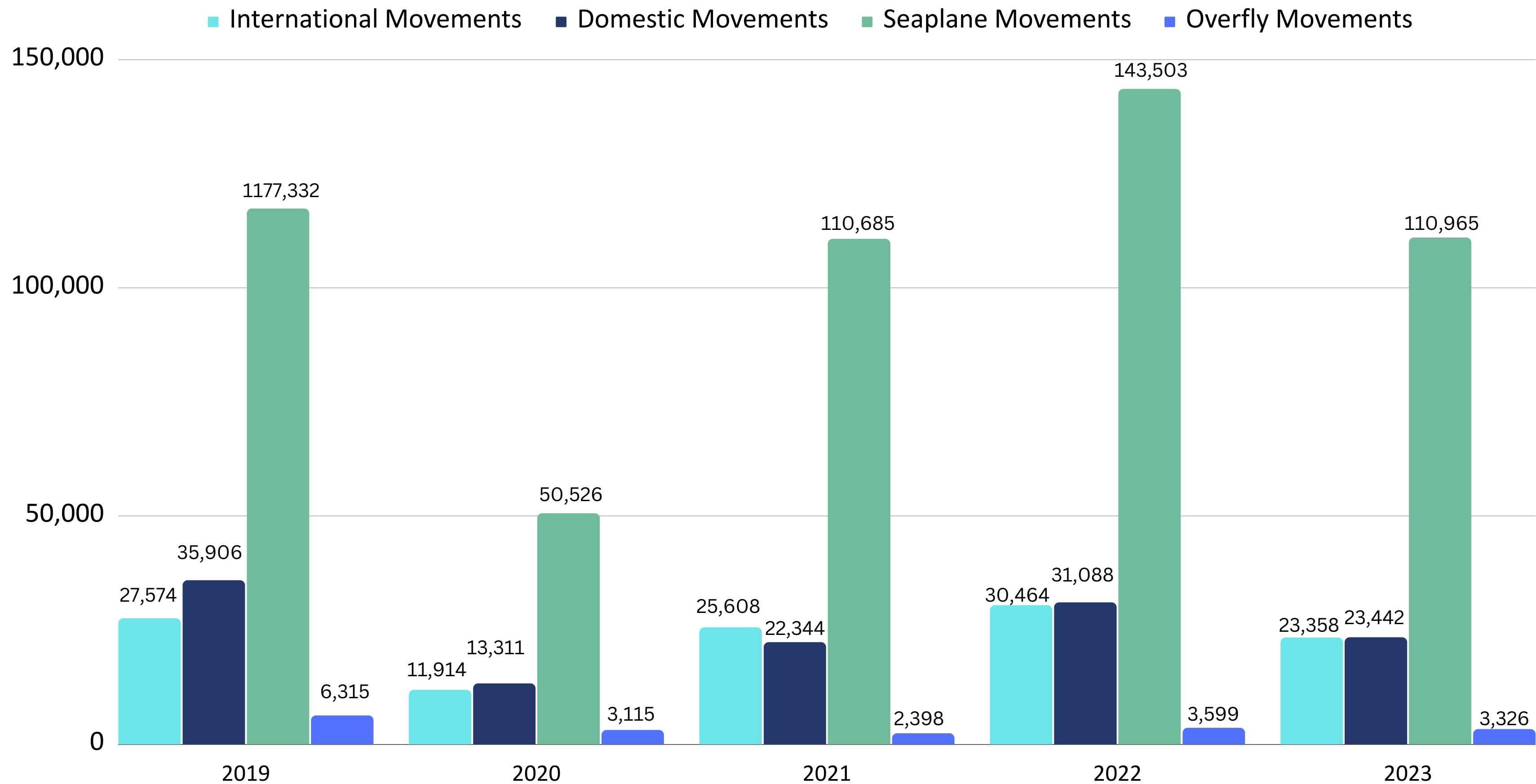
PTB expansion to north and south (including domestic)

Cargo to West and North

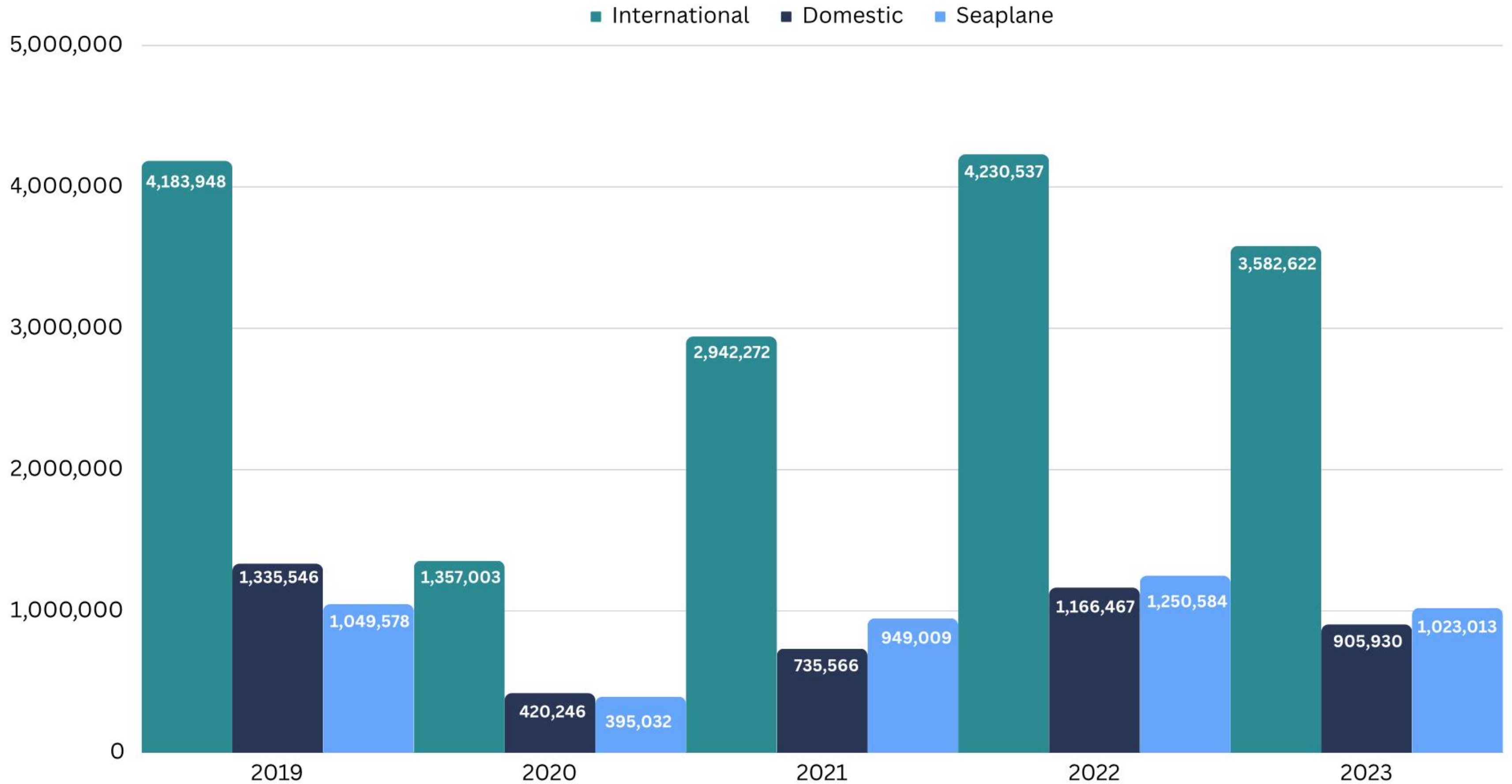
ONGOING DEVELOPMENTS MAJOR PROJECTS AND FACILITIES



AIRCRAFT MOVEMENT - AS OF SEPTEMBER 2023

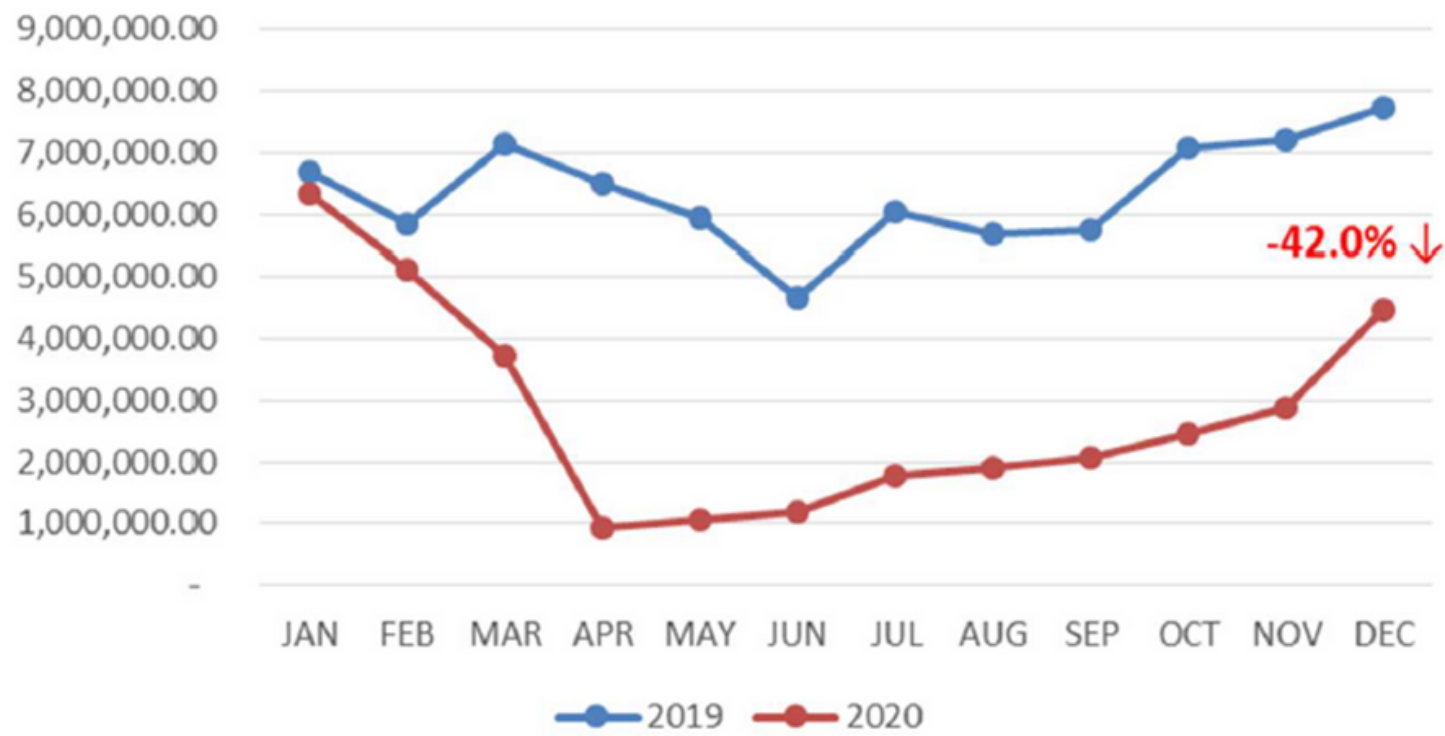


PASSENGER MOVEMENT - AS OF SEPTEMBER 2023

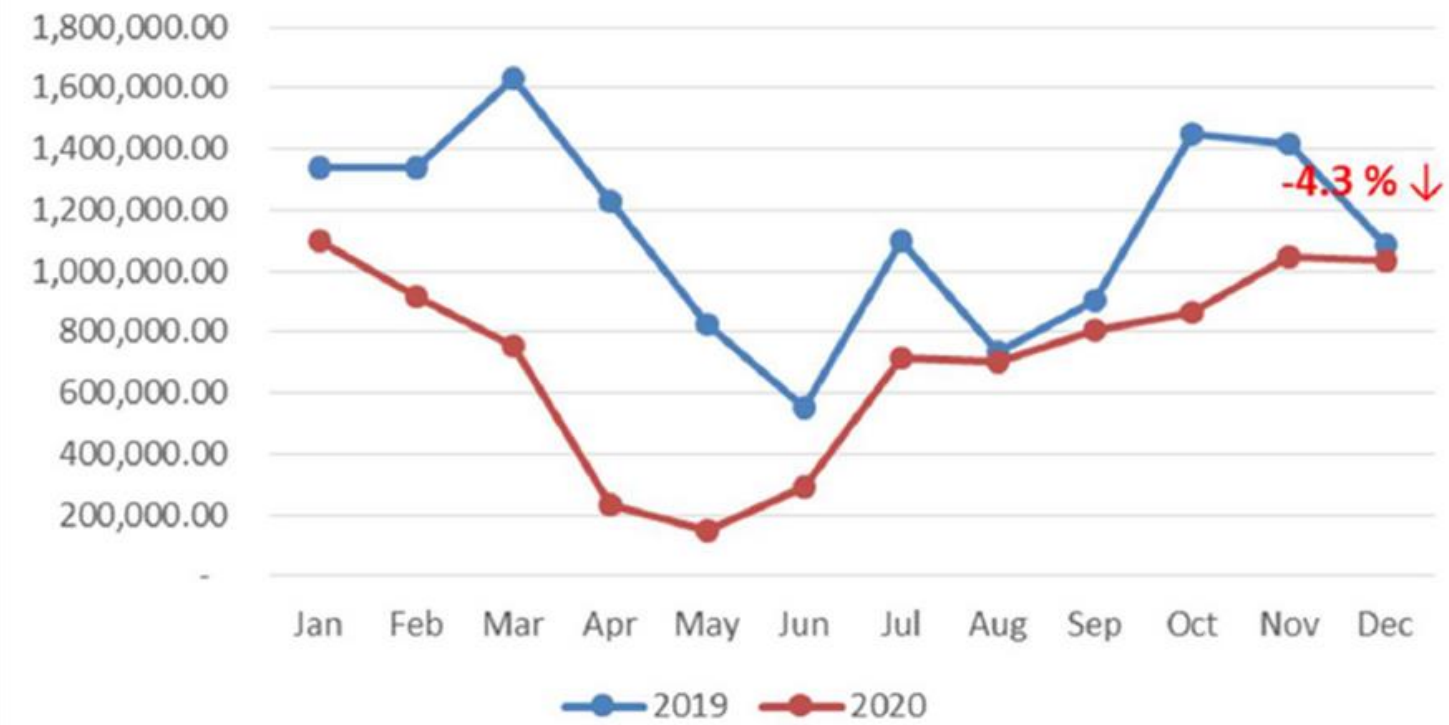


CARGO STATISTICS

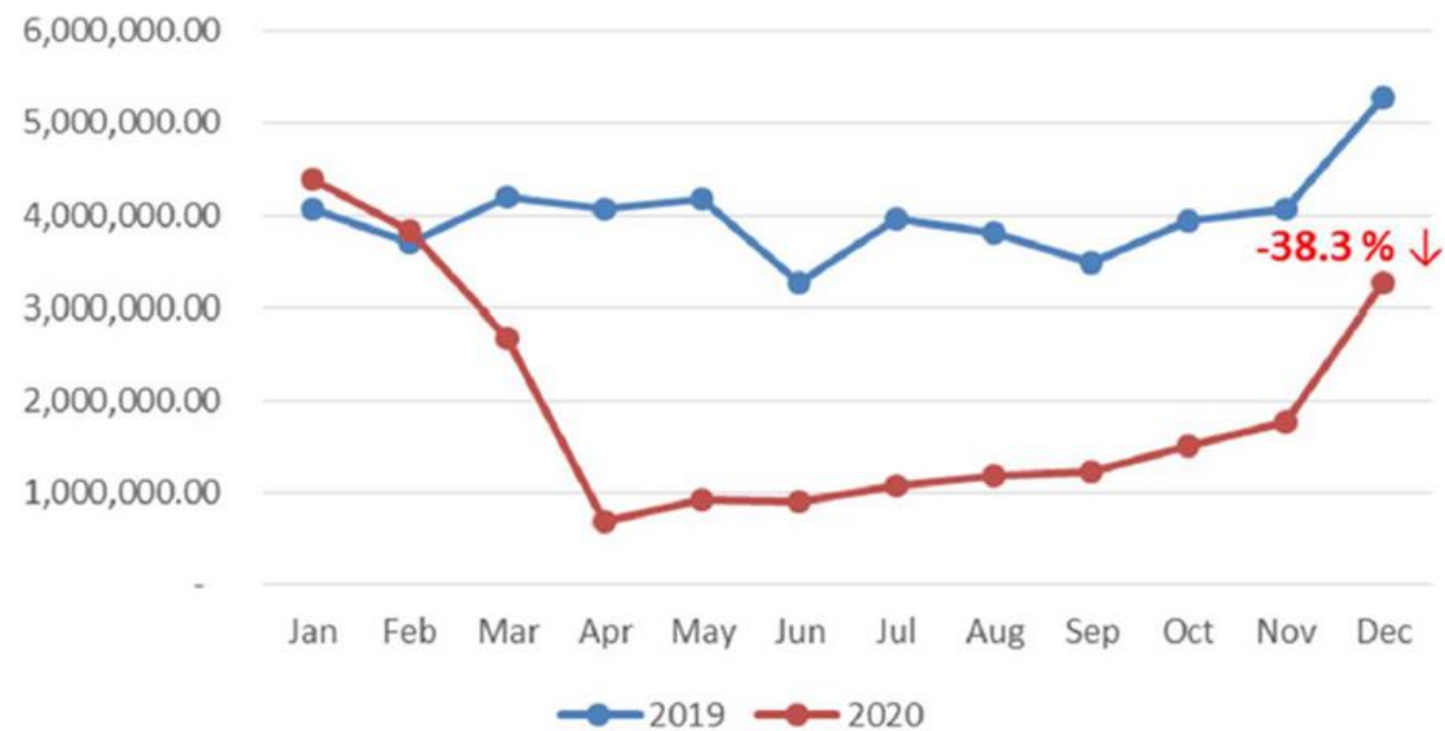
Total Throughput (Kgs)



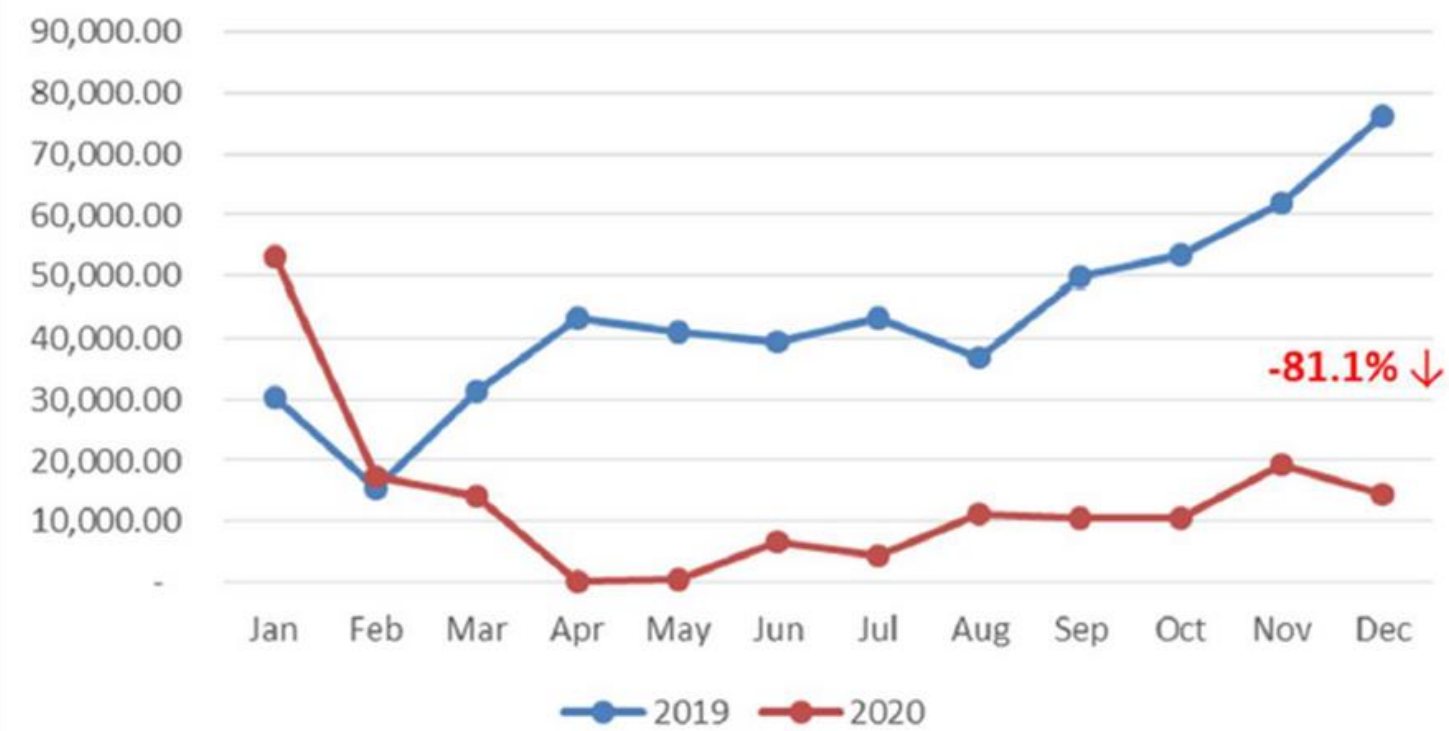
Export (Kgs)



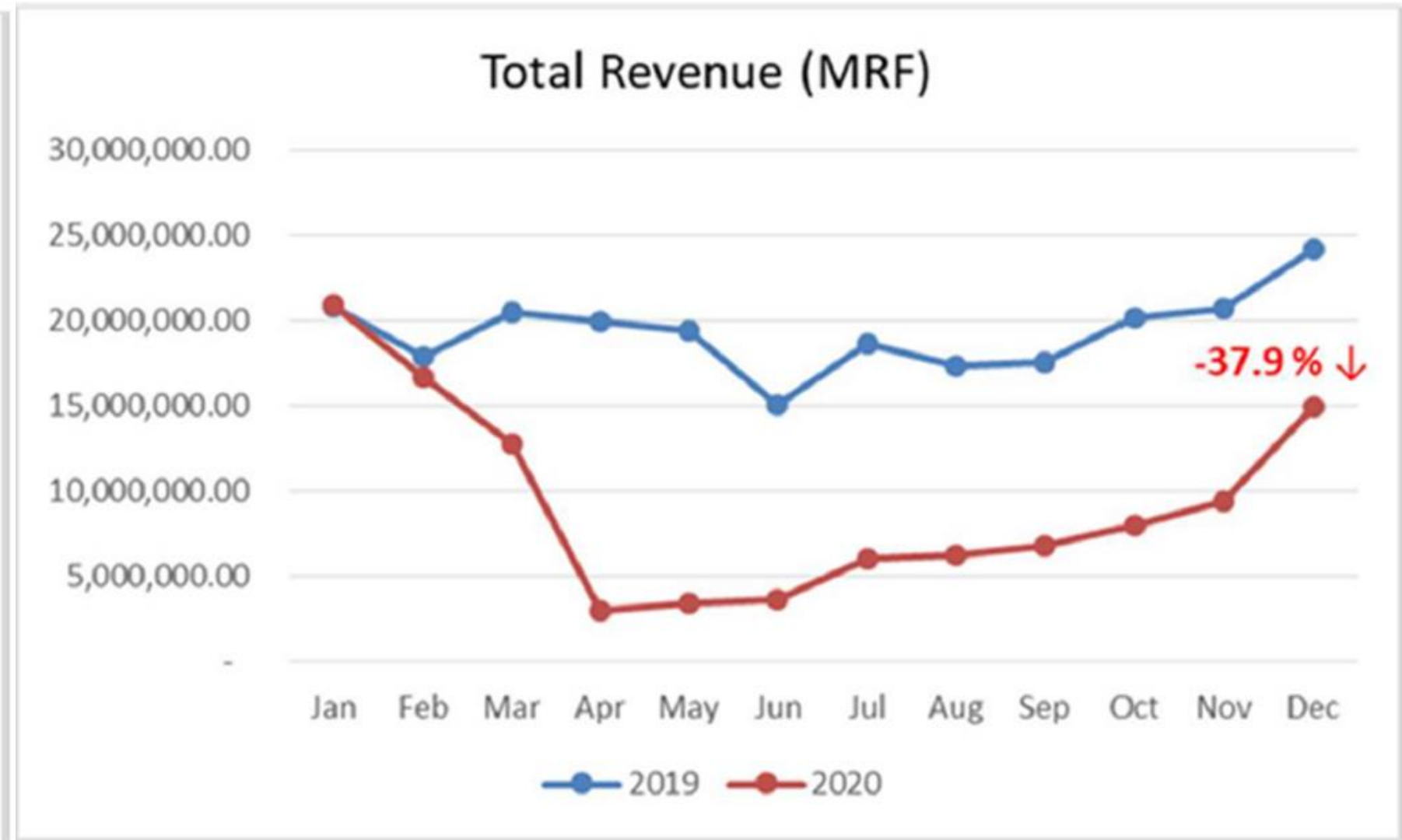
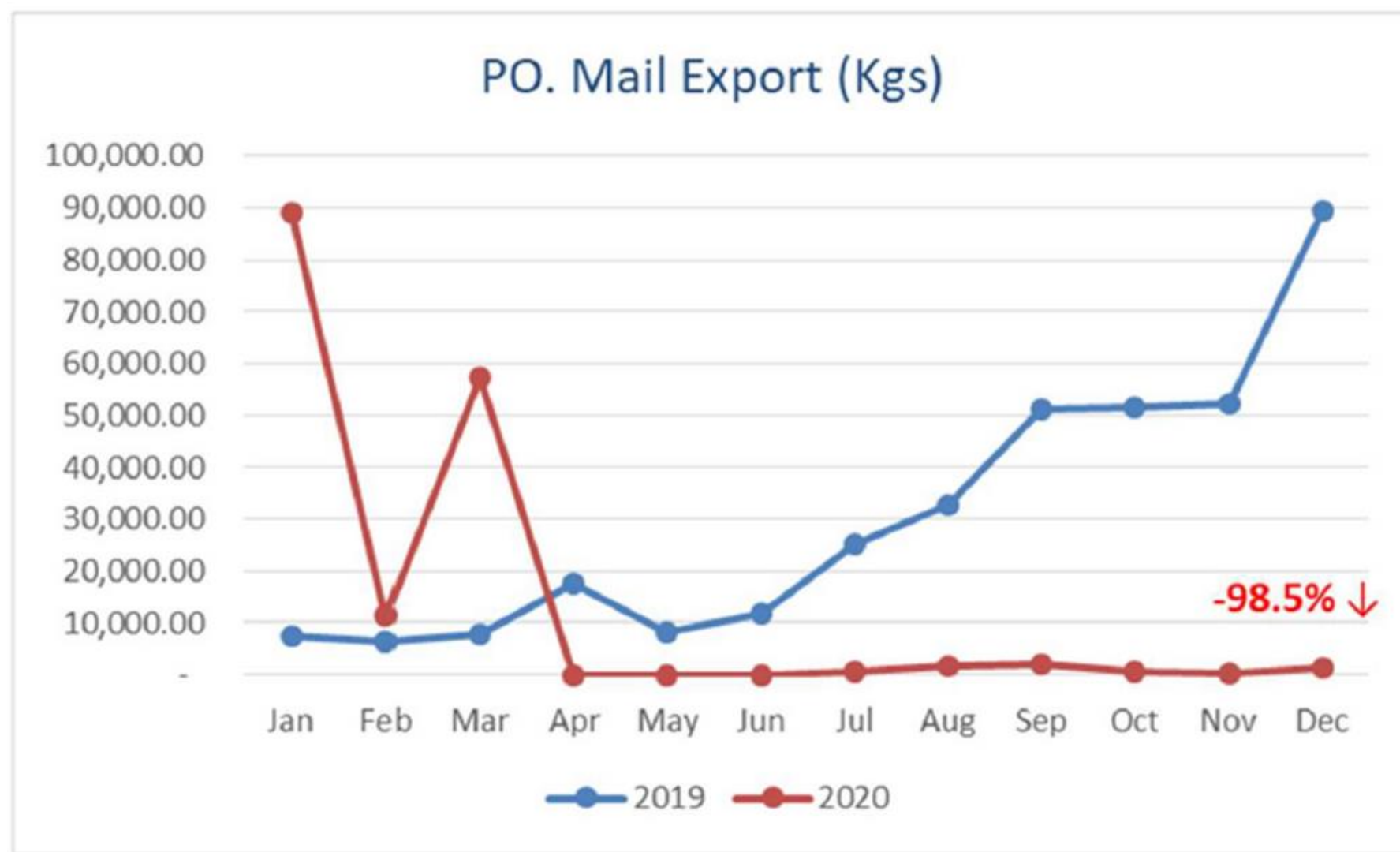
Imports (Kgs)



PO. Mail Import (Kgs)



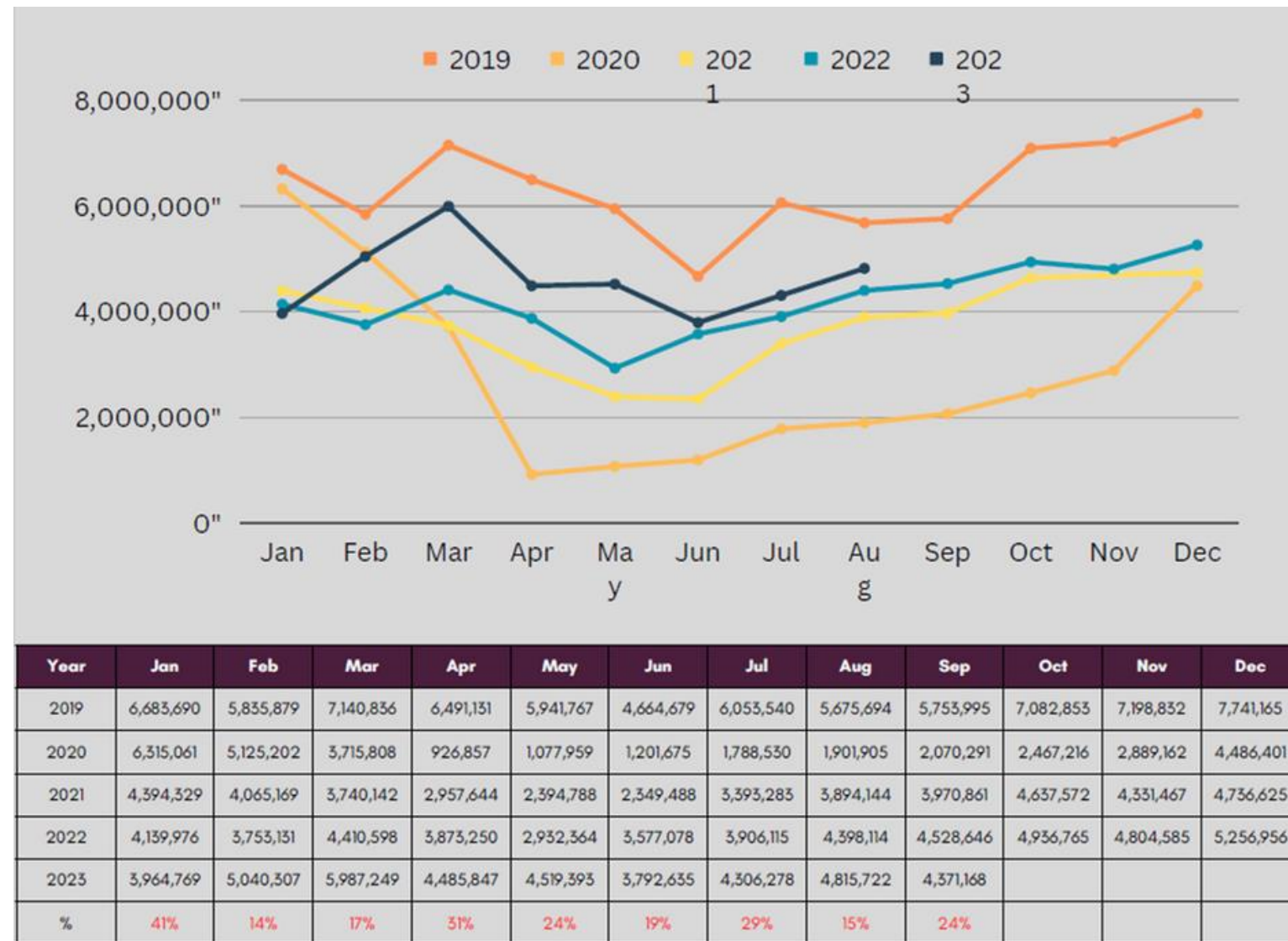
CARGO STATISTICS



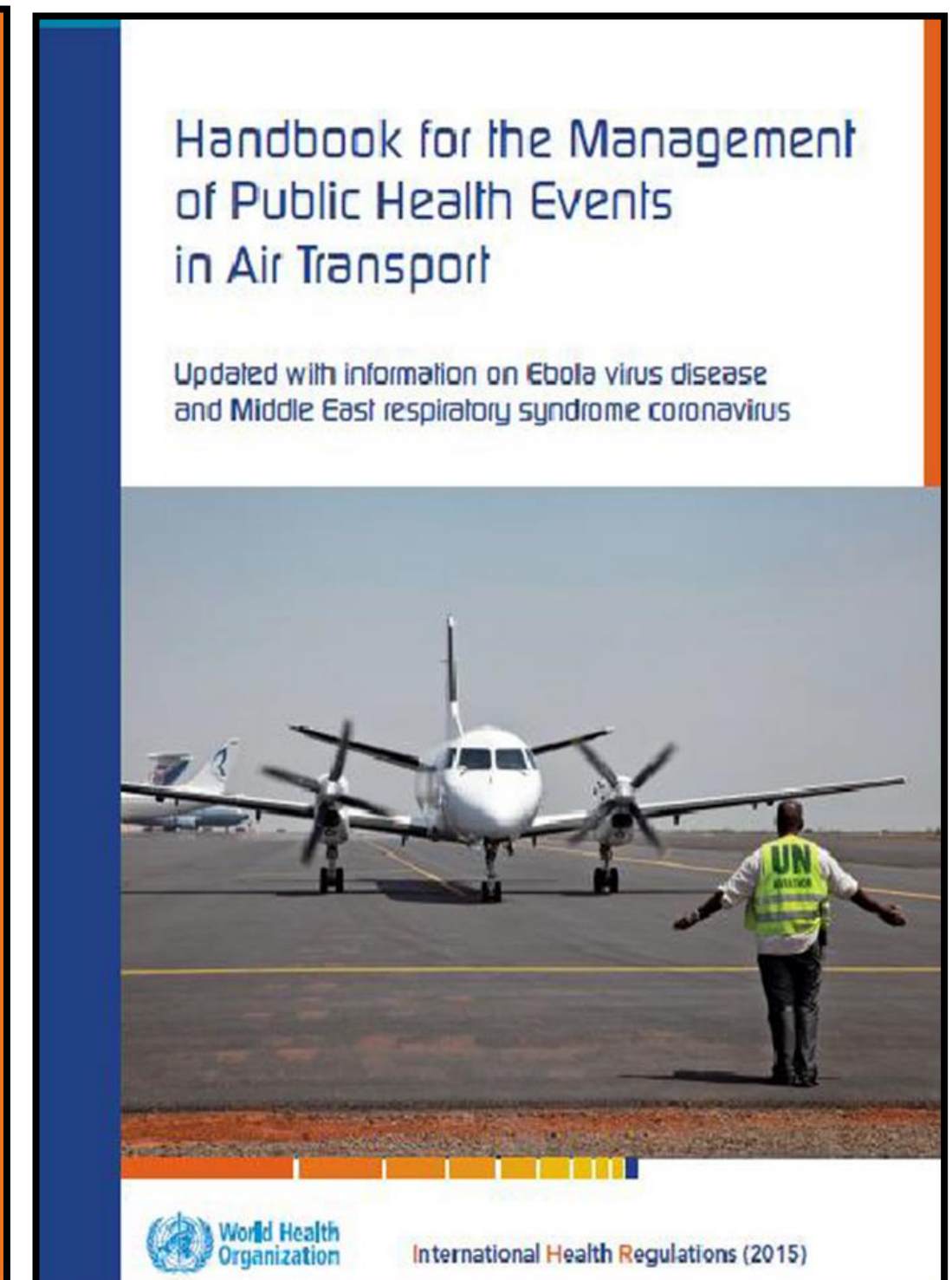
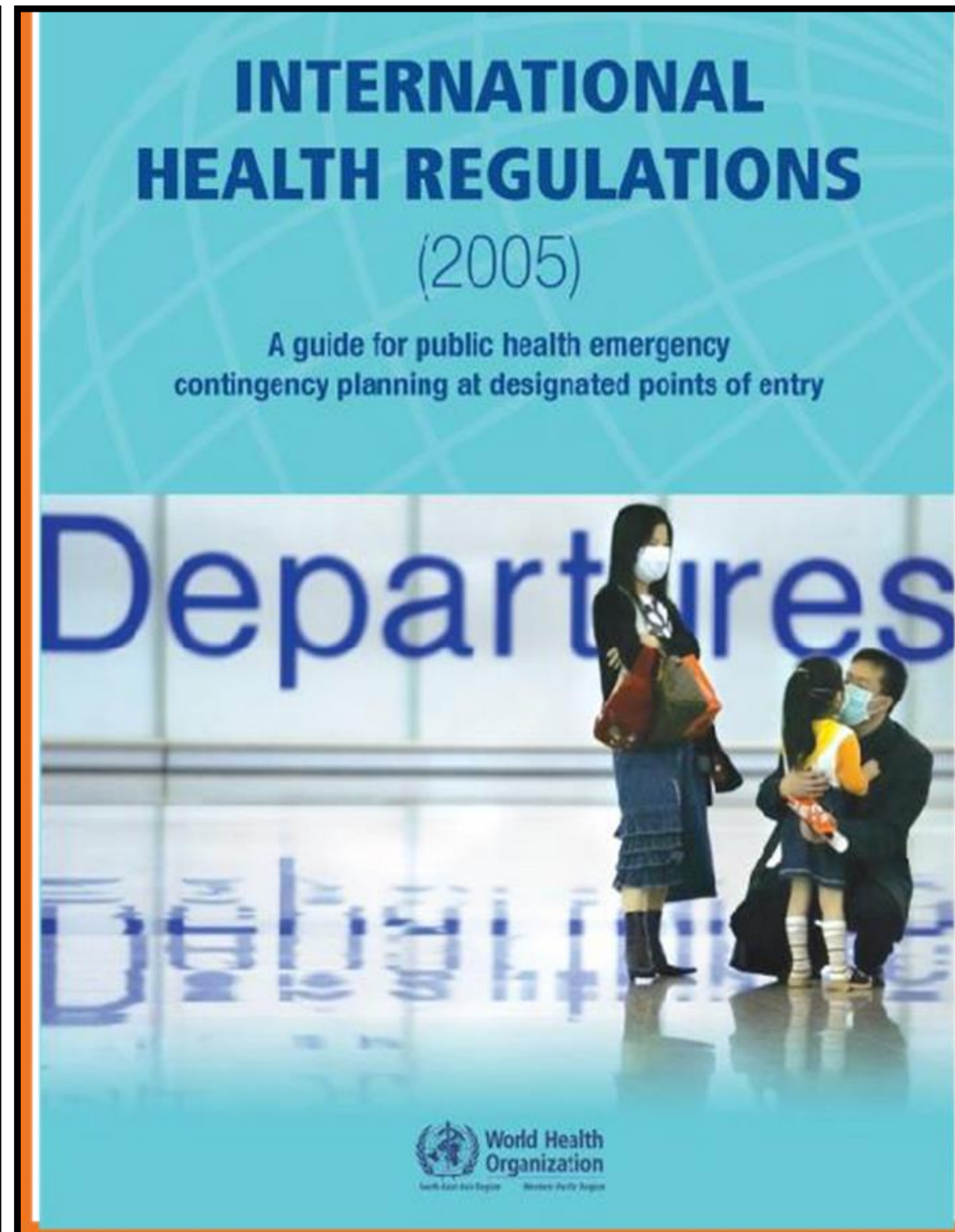
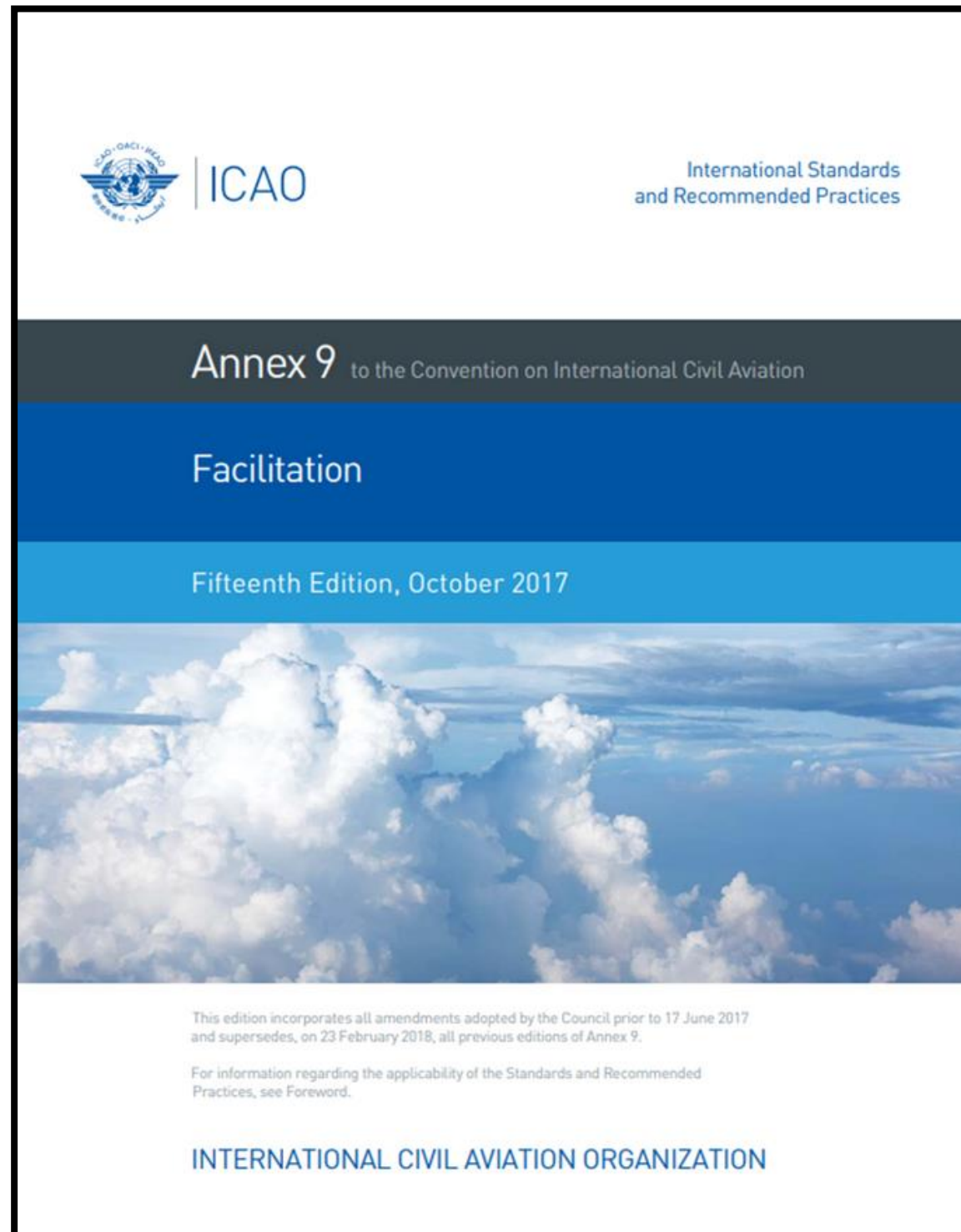
MACL Special Assistance to COVID-19 - CARGO

Charges Waved Off on Government request to Covid related shipments											
Type	Mar	Apr	May	June	July	August	September	October	November	December	Total
Government	31,965.20	610,674.78	48,603.00	614,380.00	2,539.40	83,752.00	25,991.00	88,378.41	213,826.46	115,526.06	1,835,636.31
Demurrages	-	-	2,371,623.00	3,013,339.00	-	-	-	-	-	-	5,384,962.00
Total	31,965.20	610,674.78	2,420,226.00	3,627,719.00	2,539.40	83,752.00	25,991.00	88,378.41	213,826.46	115,526.06	7,220,598.31

CARGO STATISTICS - AS OF SEPTEMBER 2023



PUBLIC HEALTH EMERGENCY PREPAREDNESS - REGULATORY COMPLIANCE



PUBLIC HEALTH EMERGENCY PREPAREDNESS - REGULATORY COMPLIANCE



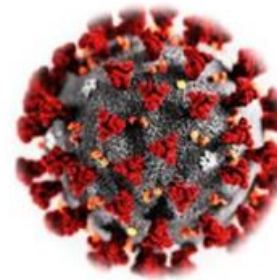
International Civil Aviation Organization

Council Aviation Recovery Task Force (CART)

**Take-off: Guidance for Air Travel
through the COVID-19 Public Health Crisis
Fourth Edition**

Montréal, Canada, 5 October 2021

Version 10
30th June 2020



**COVID-19 Quick Reference
Guidelines**

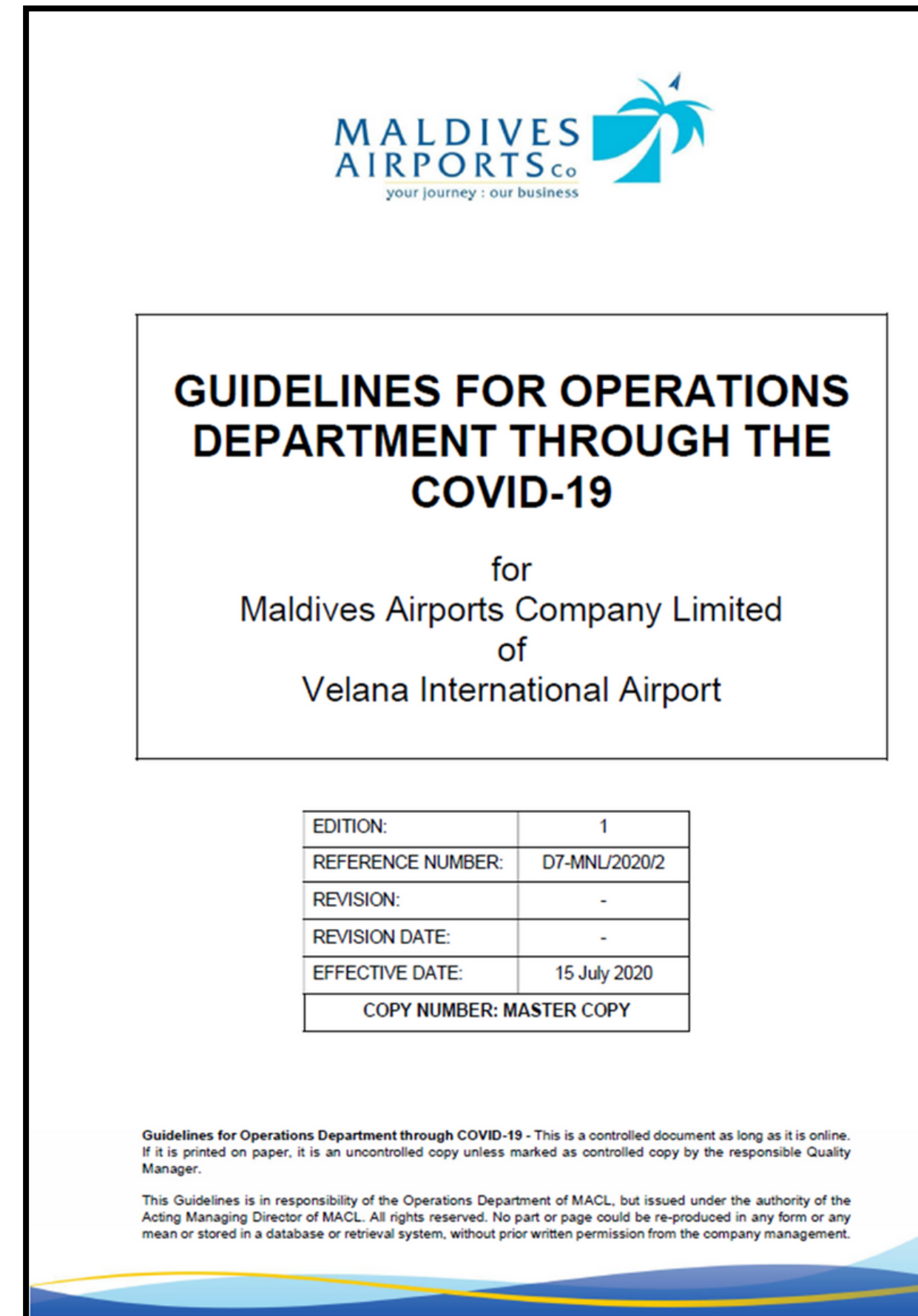


Jan 01, 2021

**Response
Guideline for the
Points of Entry**

Health protection Agency
Ministry of Health
Maldives

PUBLIC HEALTH EMERGENCY PREPAREDNESS - LOCAL PLANS



PUBLIC HEALTH EMERGENCY PREPAREDNESS - LOCAL PLANS



MALDIVES AIRPORTS COMPANY LIMITED

GUIDELINE FOR DURING AND POST COVID-19

VELANA INTERNATIONAL AIRPORT

EDITION:	1
REFERENCE NUMBER:	116-M./MIS//2020/43
REVISION:	1
REVISION DATE:	04 th March 2021
EFFECTIVE DATE:	07 th March 2021
COPY NUMBER: MASTER COPY	

THE INFORMATION CONTAINED IN THIS PUBLICATION IS SUBJECT TO CONSTANT REVIEW IN THE
LIGHT OF CHANGING GOVERNMENT REQUIREMENTS AND INTERNATIONAL REGULATIONS

Airport Emergency Planning
Crisis Management
Airport Emergency Services



STANDARD OPERATING PROCEDURE FOR COVID-19 REPATRIATION MOVEMENTS AT VIA

1. INTRODUCTION

With the prolongation of Health Emergency in Maldives following exposure of COVID-19 infections across the country, MACL is subjected to carryout COVID-19 repatriation movements at VIA.

Such movements include departure of positive / primary contacts after obtaining special permits from their destination hub via Ministry of Foreign Affairs and approval of departure from the Health Protection Agency (HPA).

2. PURPOSE OF THE SOP

The purpose of this SOP is to streamline the departure process of COVID repatriation movements.

3. SCOPE OF SOP

The repatriation movement involves the below internal and external agencies.

3.1 Internal Agency - MACL

1. Airport Emergency Services
2. Terminal Services
3. Transport Section
4. Ramp Services

3.2 External Agencies

1. Health Protection Agency
2. Maldives Immigration
3. Maldives Customs
4. Aviation Security Command
5. Airport Police
6. Resort Operator
7. Aircraft Handling Agent
8. Seaplane Operator



PREPARATION

This part of the presentation highlights the actions taken by MACL in collaboration with HPA to prepare Velana International Airport to combat with the global pandemic.

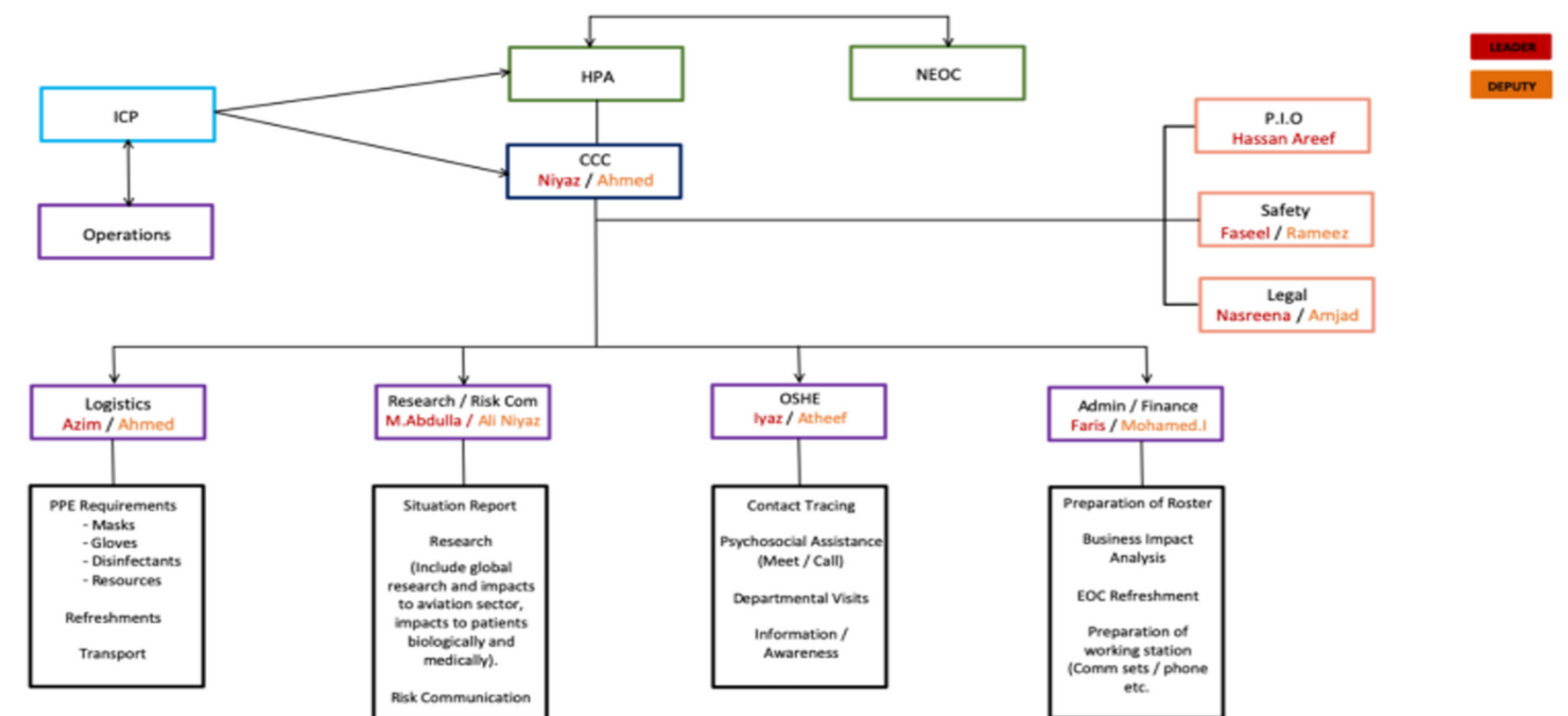
PUBLIC HEALTH EMERGENCY PREPAREDNESS

24th January 2020

A response team was formulated amongst the senior management of MACL



CCC Structure



PRE-ACTIONS

28 AUGUST 2019

A table-top exercise was conducted, initiated by HPA to prepare airport for public health emergencies. AEP and other response mechanisms were tested.

24 JANUARY 2020

A Covid-19 response team was formulated amongst the senior management of MACL

26 JANUARY 2020

Entry screening was established in collaboration with HPA at arrivals

26 JANUARY 2020

MACL Senior Management attended a table-top exercise conducted by HPA. Involved all relevant stakeholders

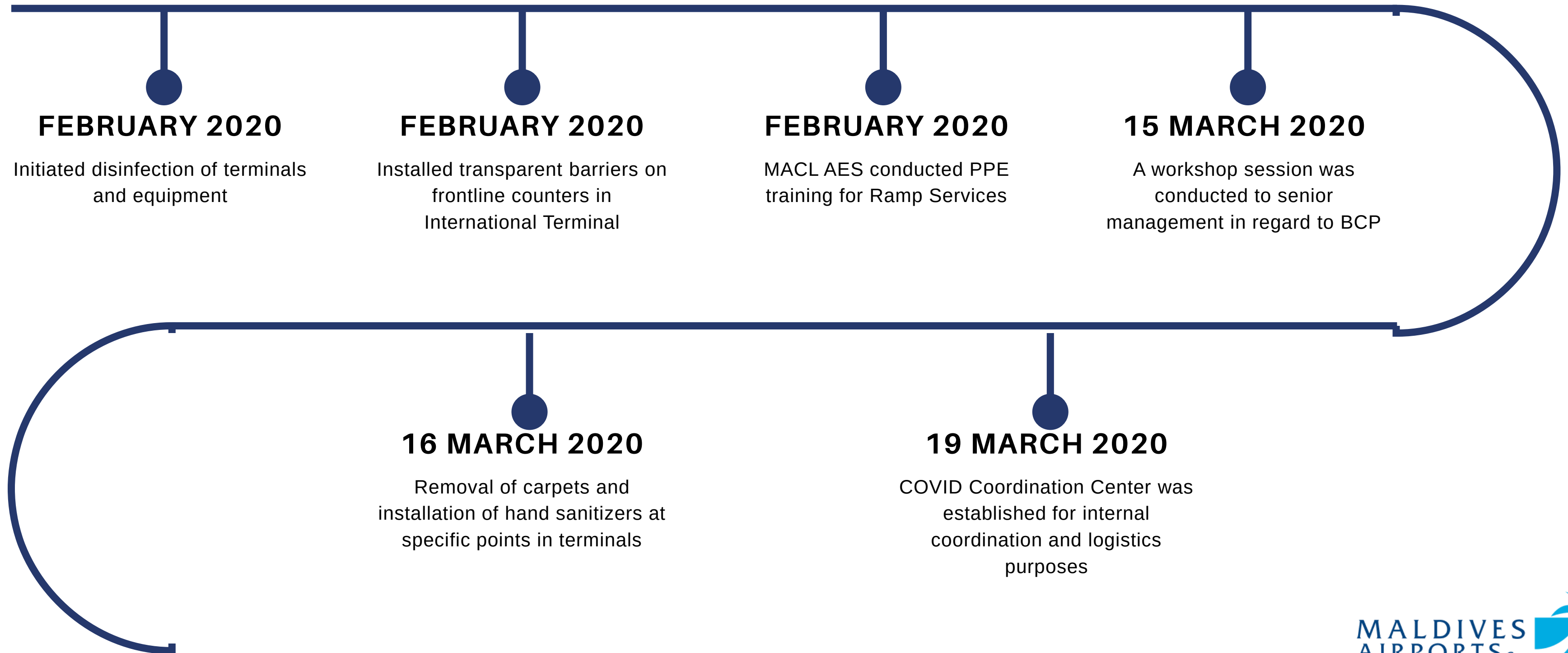
27 JANUARY 2020

Attended Multi-Agency meetings in collaboration with HPA and Ministry of Tourism

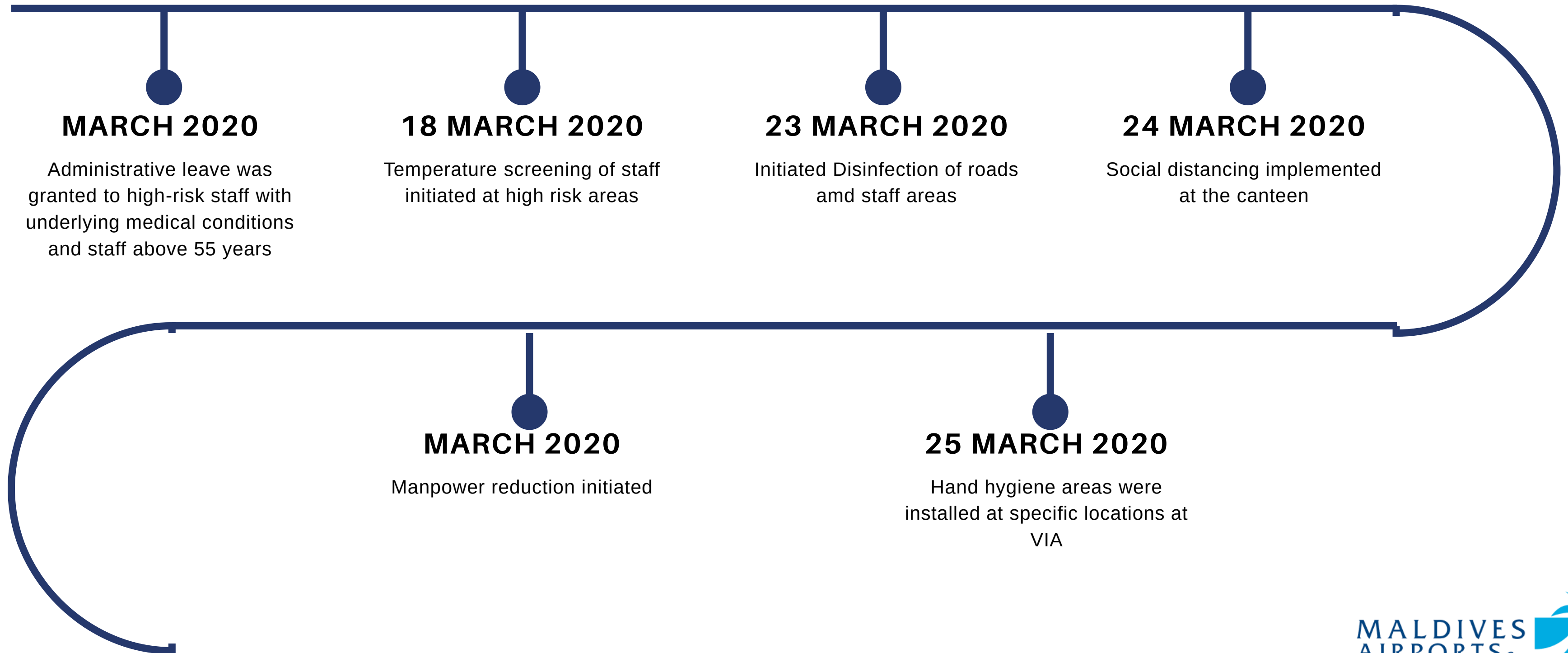
28 JANUARY 2020

MACL conducted awareness sessions. Total 1073 personnel trained

PRE-ACTIONS



PRE-ACTIONS





PREPARATION

Built 02 portable decontamination chambers

Prepared PPE kits to combat with COVID-19

Health Declaration forms were prepared and distributed to be filled by all passenger arriving to Maldives.

Installed awareness posters.

Temporary Isolation facility was established at the airport with all necessary amenities.



CLOSURE OF BORDER

Public Health Emergency was declared on 12th March 2020 and remained in force until 13th March 2022.

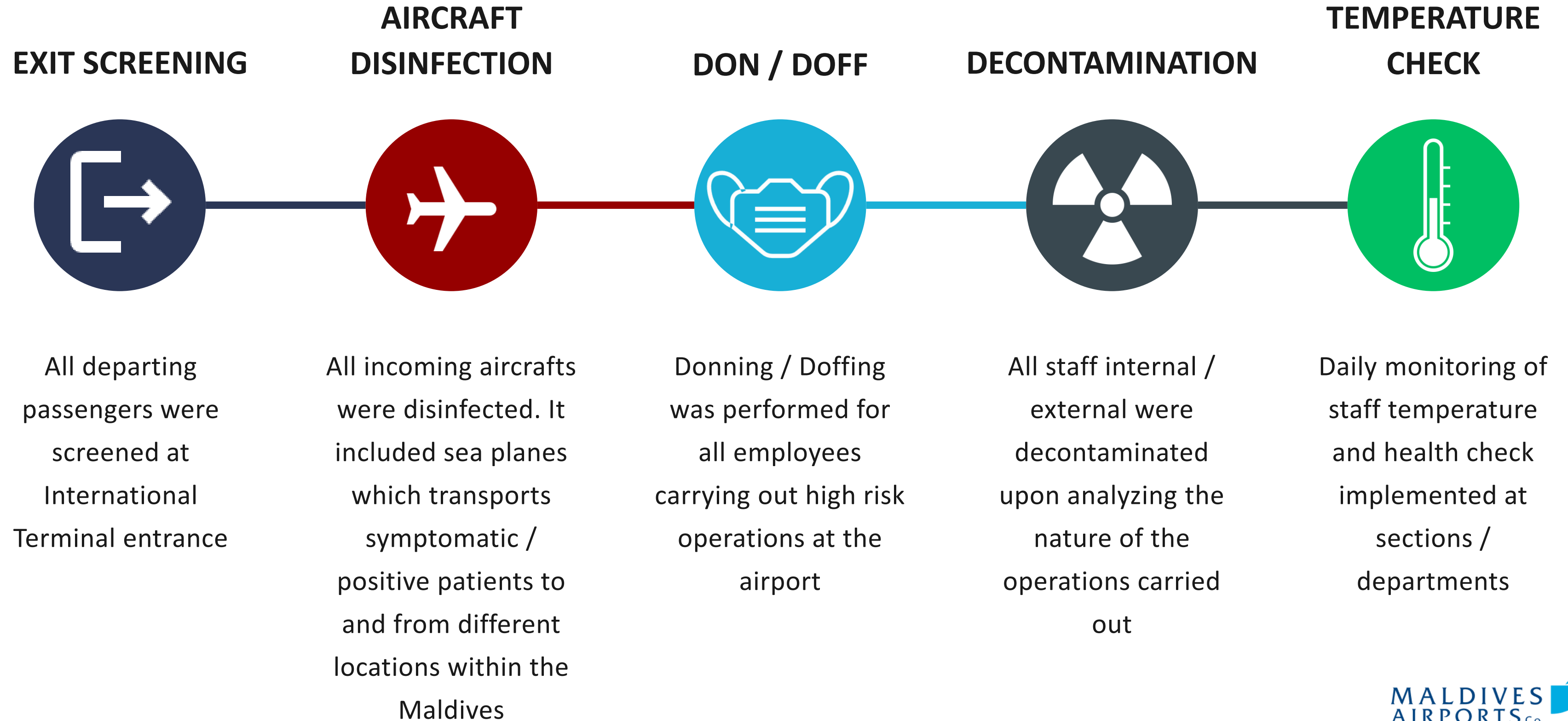
The Maldives closed its air and sea borders to tourist arrivals from March 27 – July 15, 2020.

Throughout Pandemic

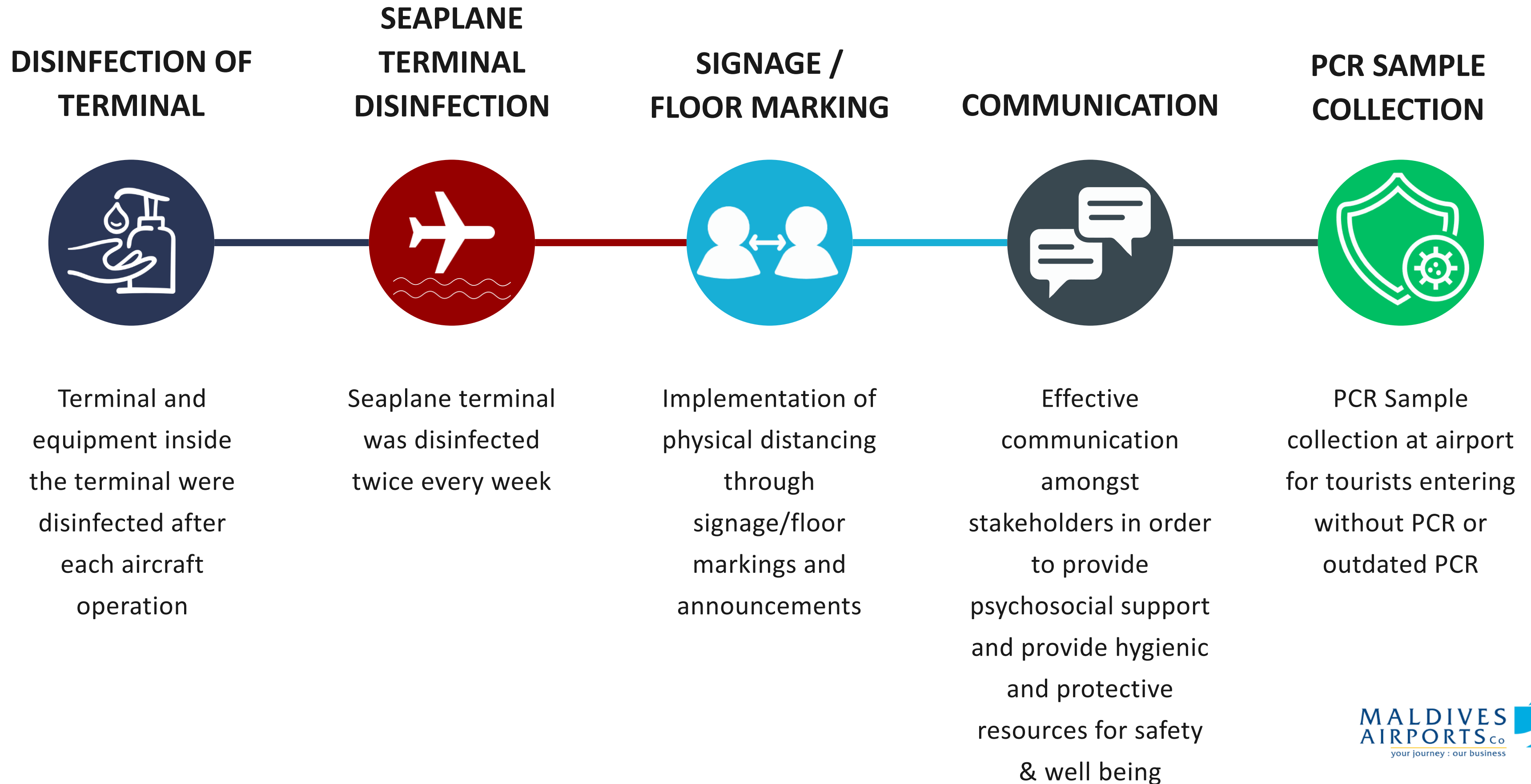
- This part of the presentation highlights the actions taken by MACL during the declaration of lockdown and throughout pandemic.



THROUGHOUT PANDEMIC



THROUGHOUT PANDEMIC



THROUGHOUT PANDEMIC

REDUCE TERMINAL SEATING



In order to ensure social distancing terminal seating was rearranged and reduced

USAGE OF PPE AT AIRPORT



All employees working at airport were required to wear masks and gloves at all times

CONTACT TRACING



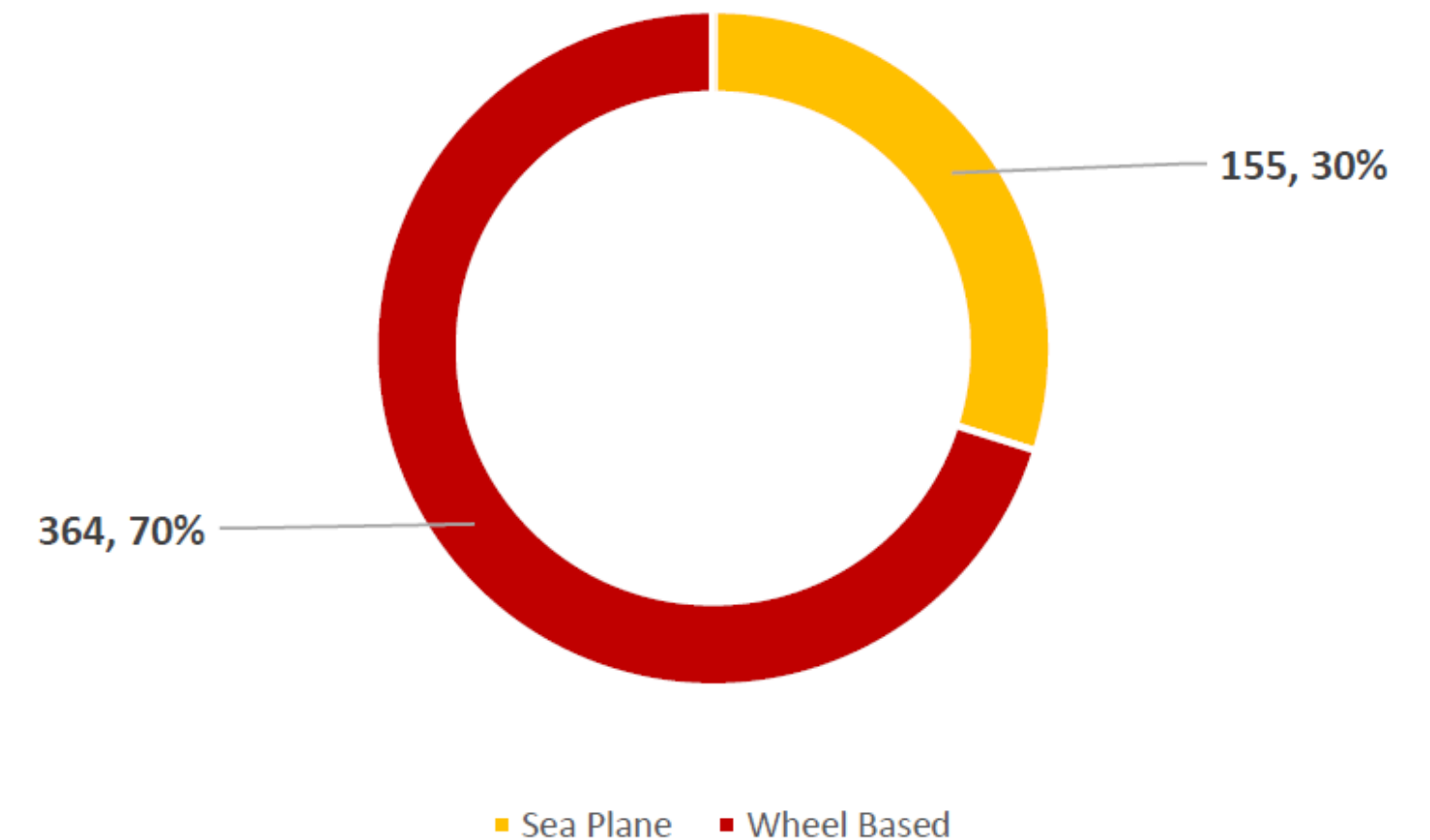
Pre-contact tracing implemented for each aircraft operation

AIRCRAFT DISINFECTION

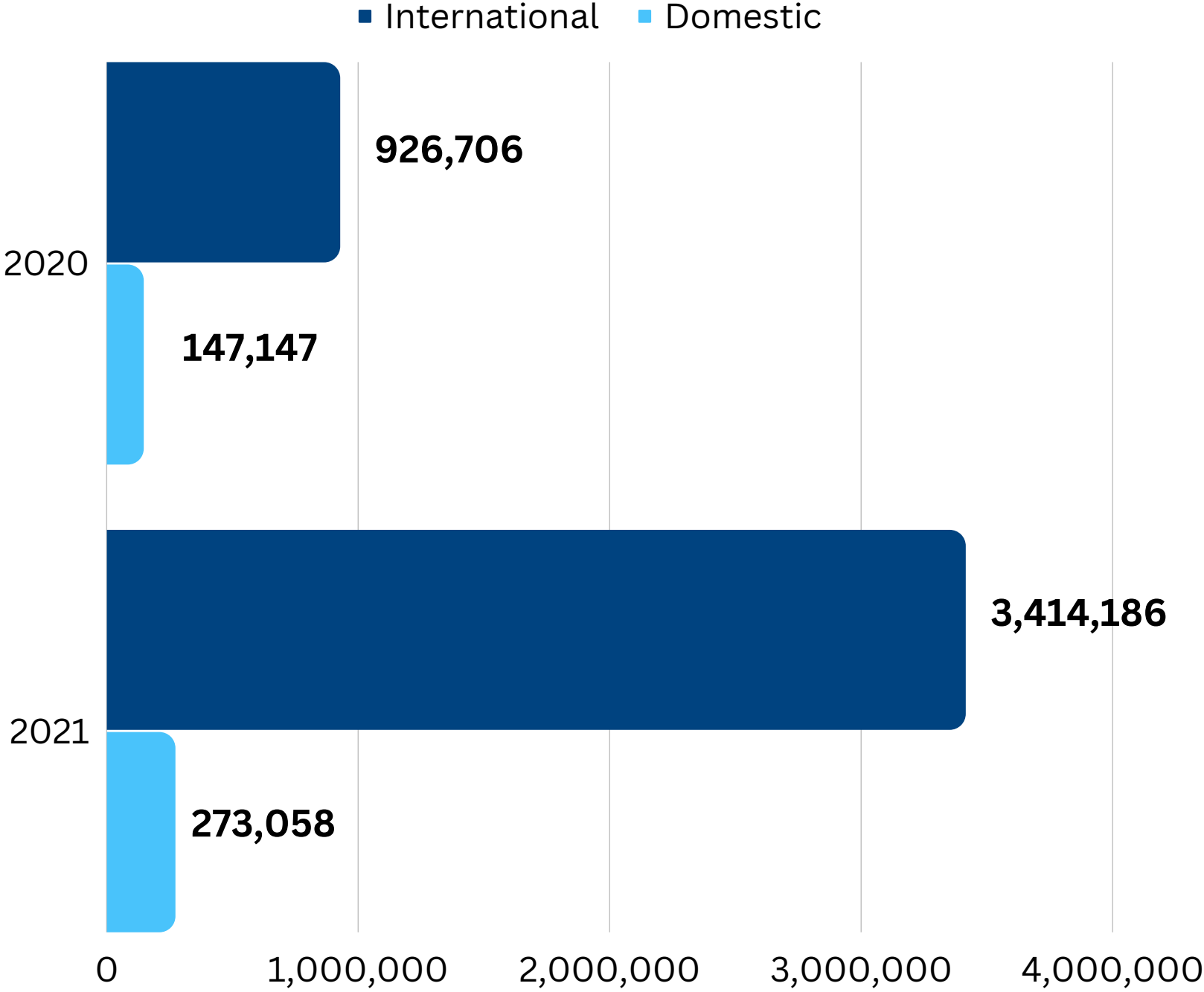


A total of **519** aircrafts were disinfected during border closure.

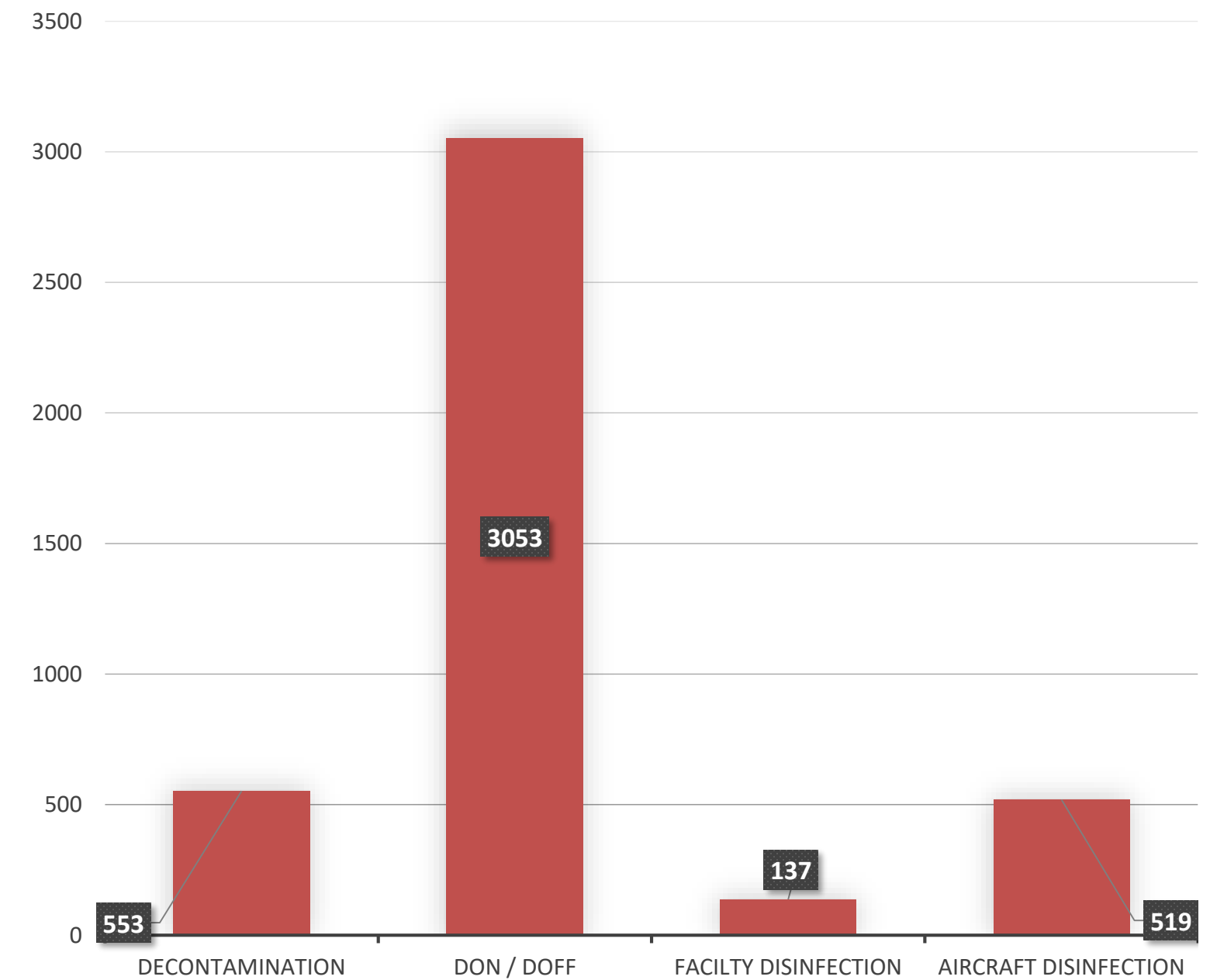
TYPES OF AIRCRAFTS



THERMAL SCREENING



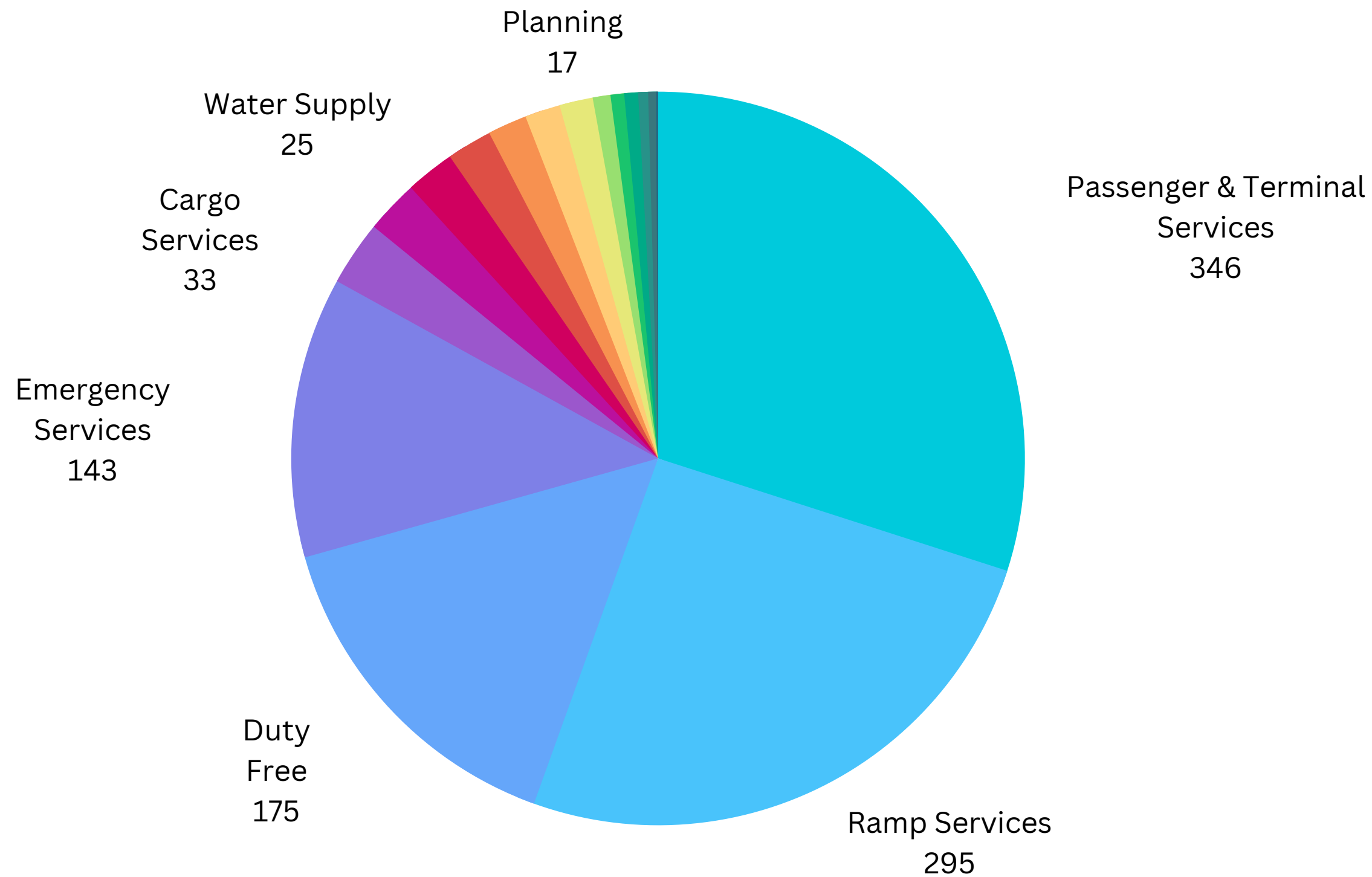
FACILITY DISINFECTION / DON-DOFF / DECON



AWARENESS SESSIONS



AWARENESS SESSIONS



Department	No. of Participants
Passenger & Terminal Services	346
Ramp Services	295
Duty Free	175
Emergency Services	143
Cargo Services	33
Air Traffic Management	27
Water Supply	25
Mechanical Services	23
Immigration	20
Aerodrome & Ground Aids	18
Planning	17
Electrical	9
Corporate Affairs & HR	14
Others (IT, SSC, etc)	10

INSPECTION STATISTICS

22 inspections were conducted on critical infrastructures to ensure the Business Continuity of Velana International Airport



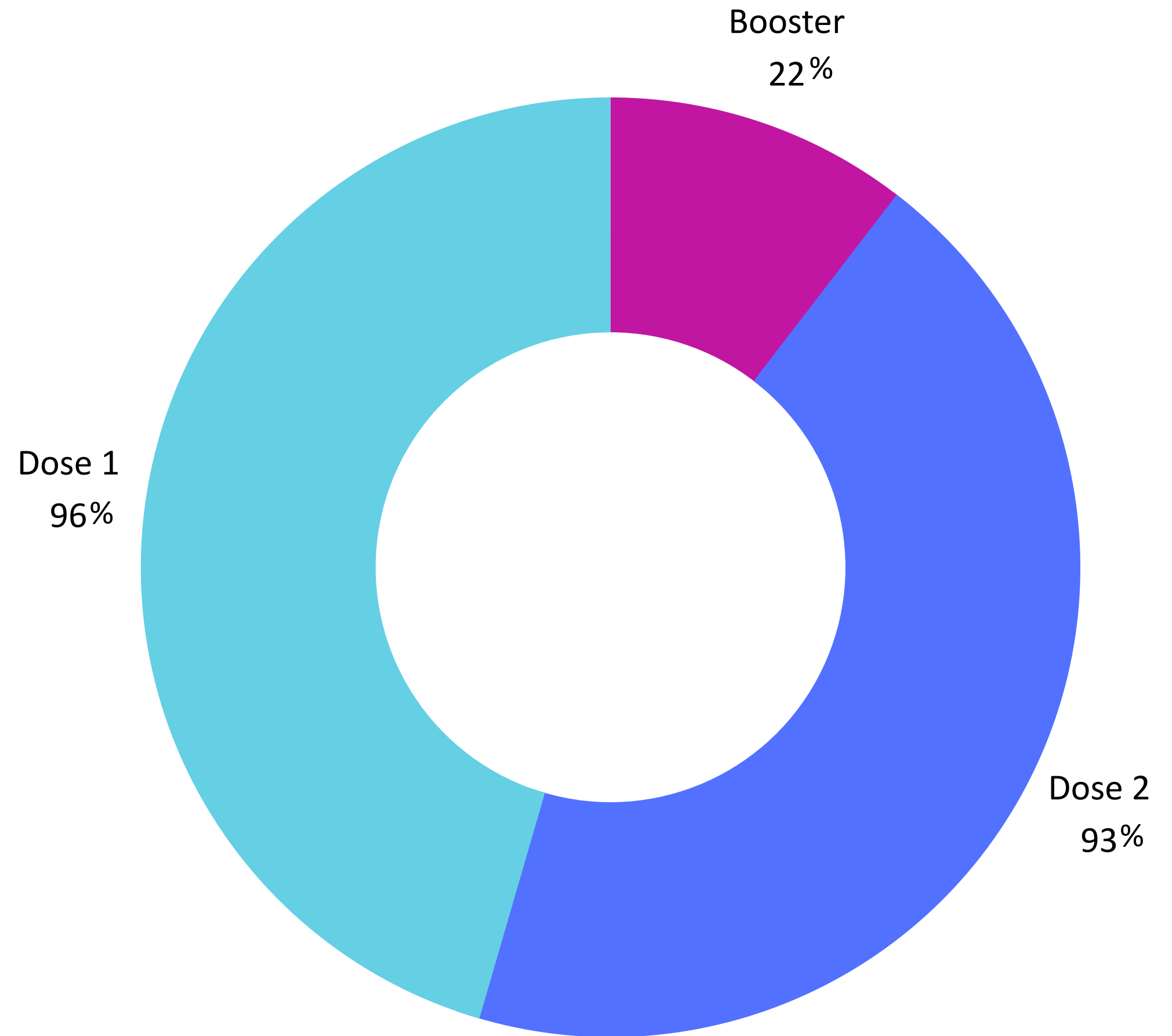
VACCINATION CAMPAIGN



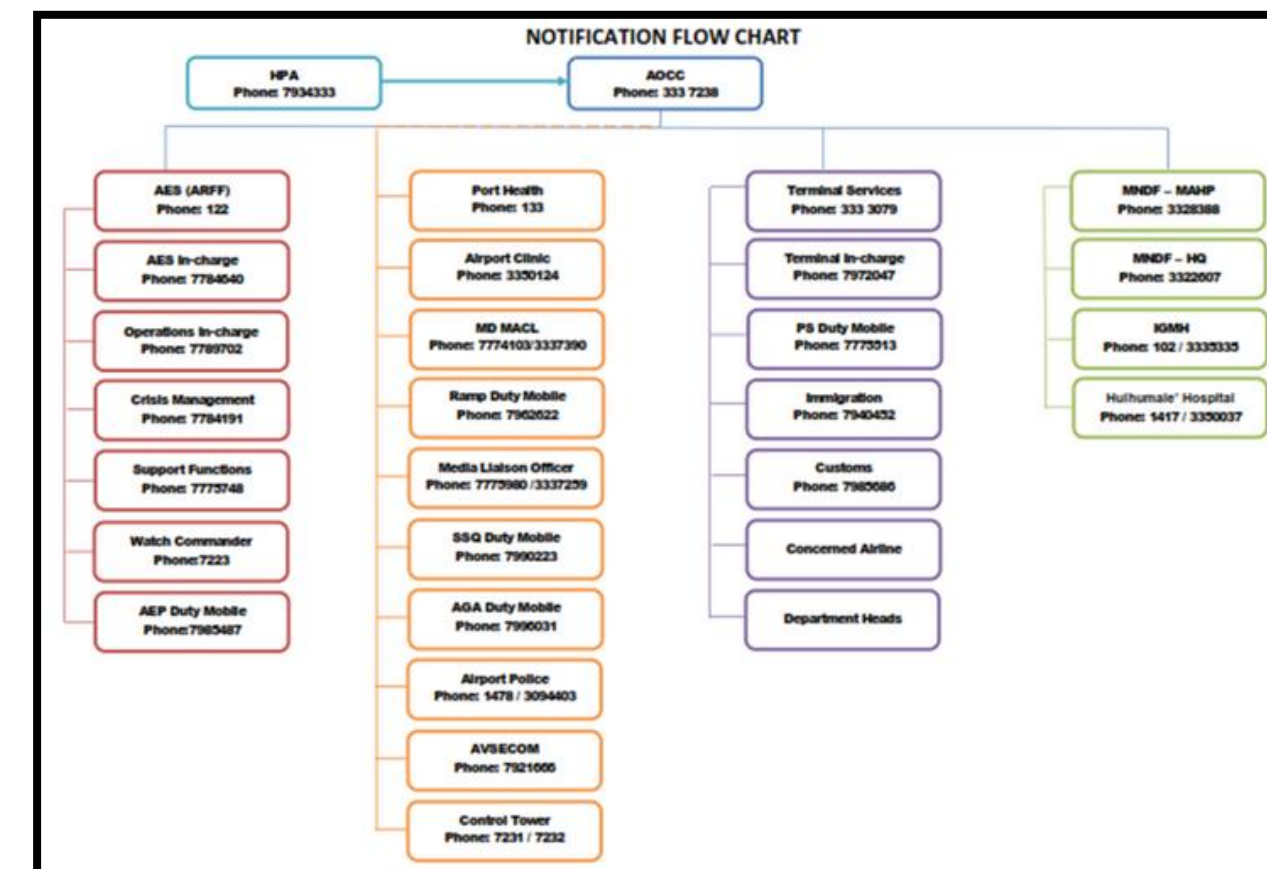
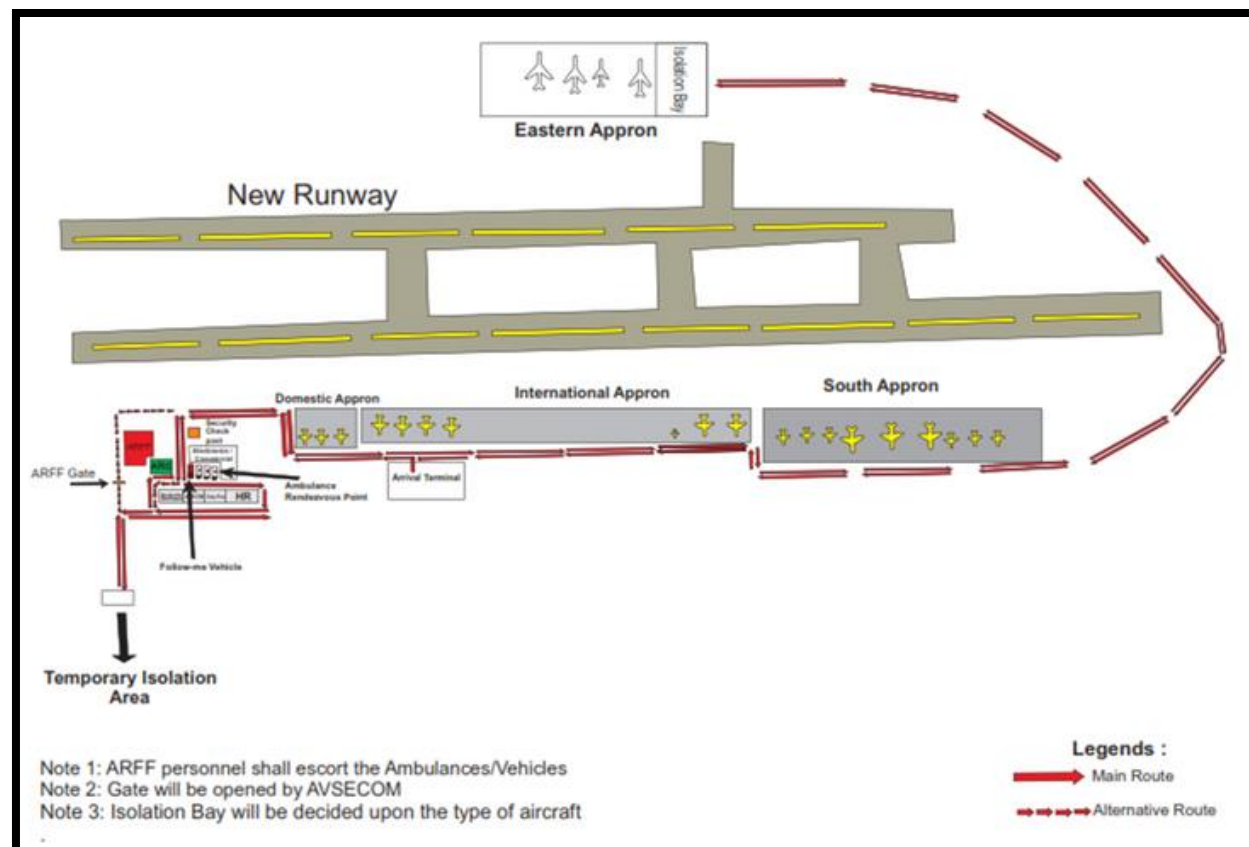
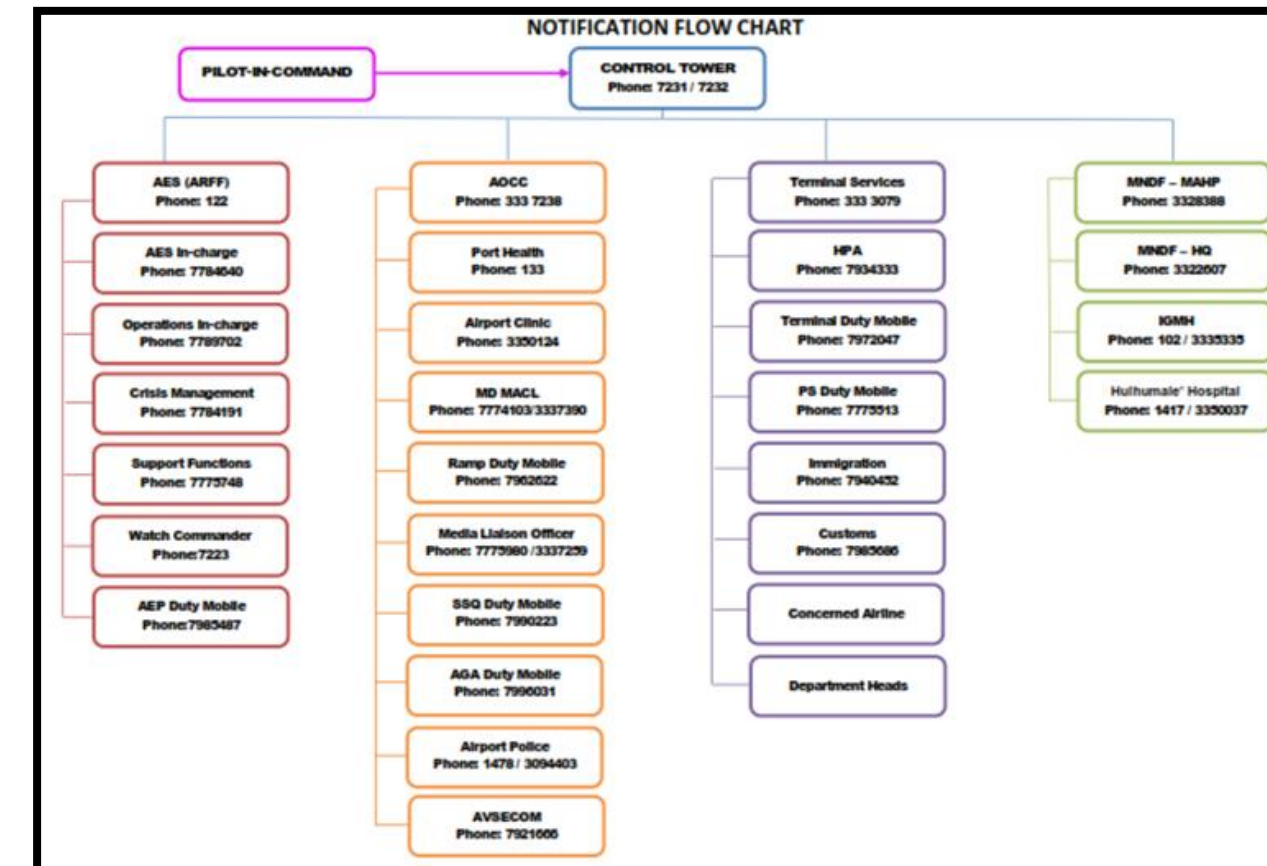
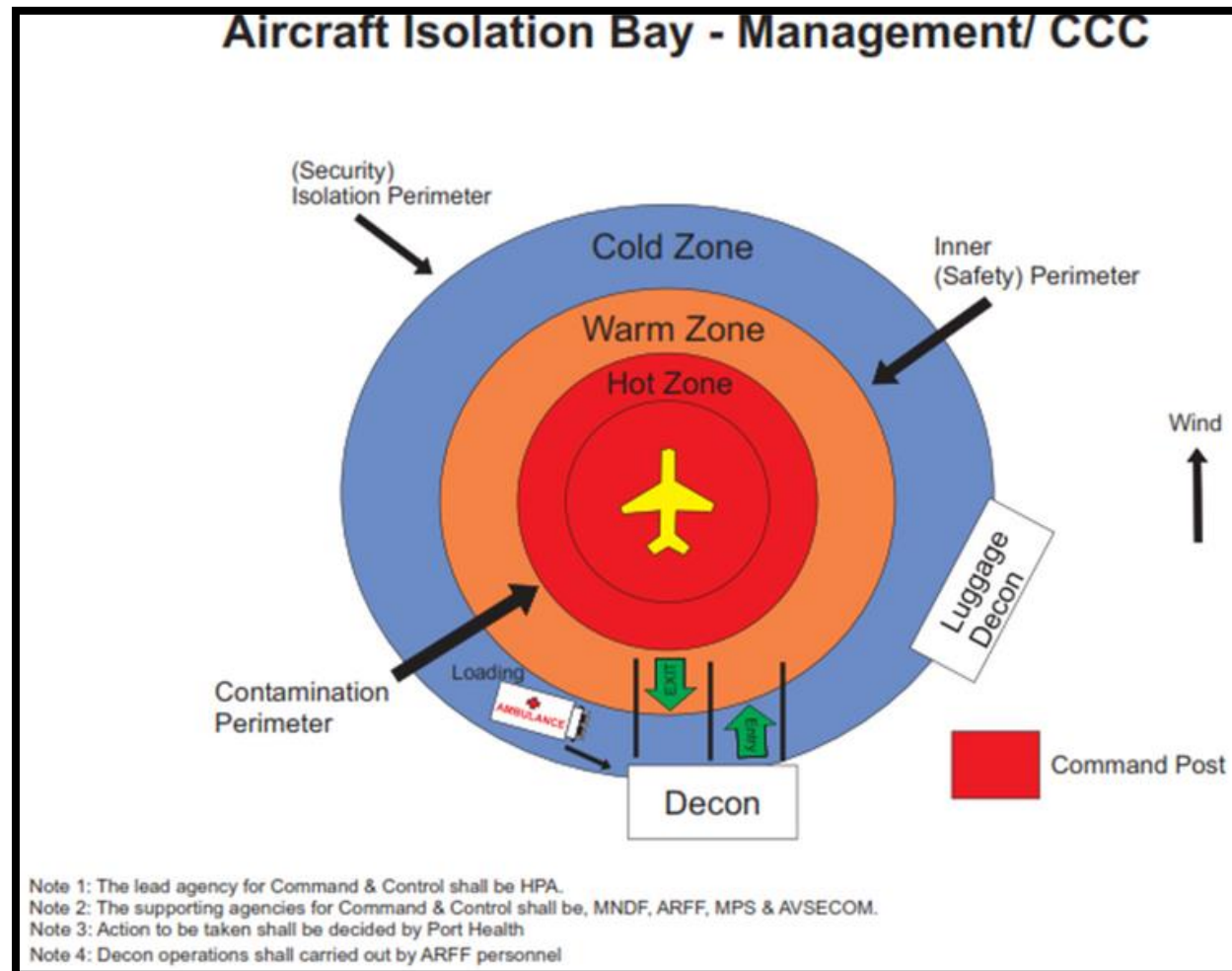
COVID-19 DHIFAAU CAMPAIGN

Initiated at Velana International
Airport on 01st March 2021.

Vaccination Center was
established at the airport to
administer vaccine to all
employees working at the
airport.

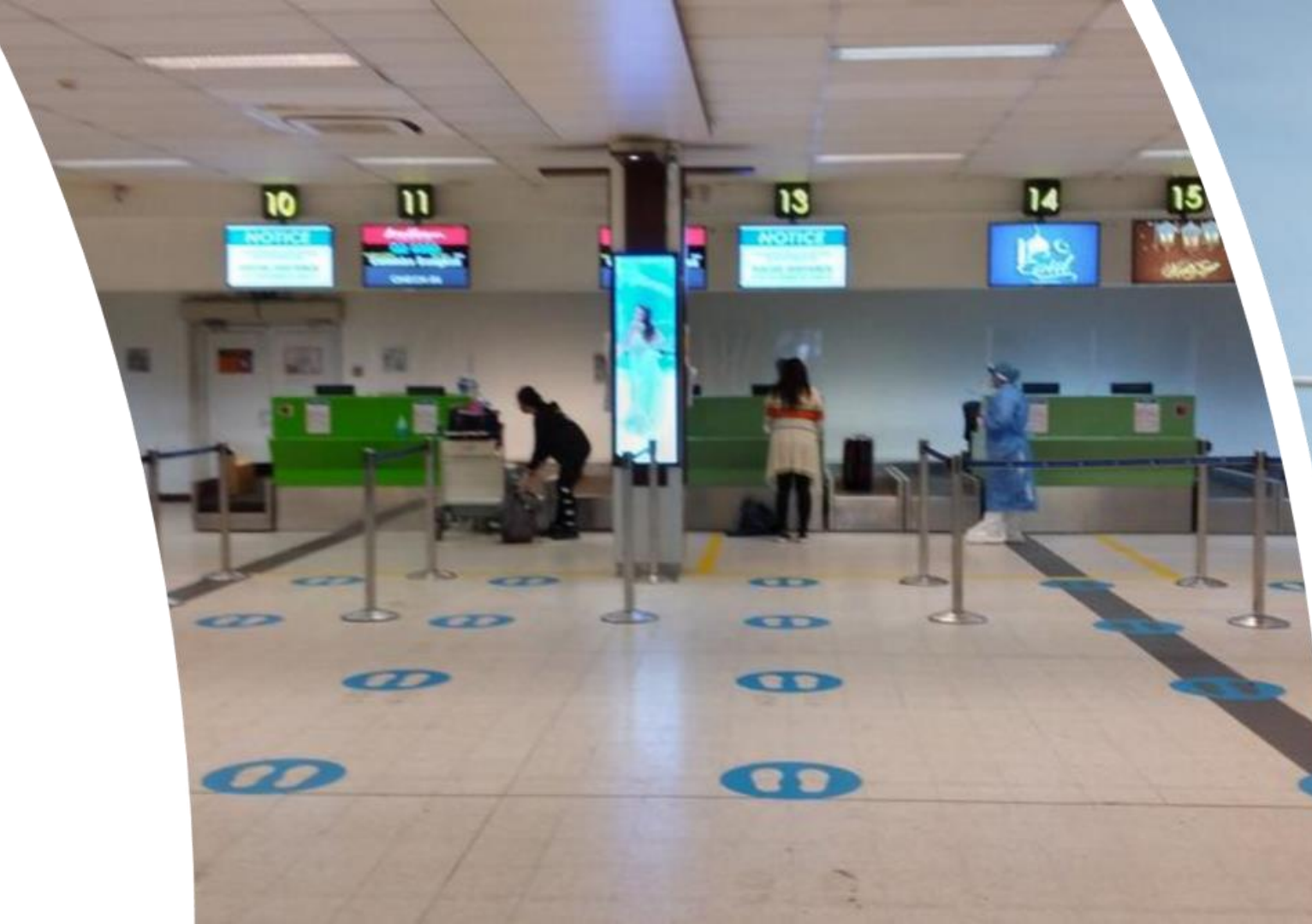


AIRPORT EMERGENCY PLAN - REVISION

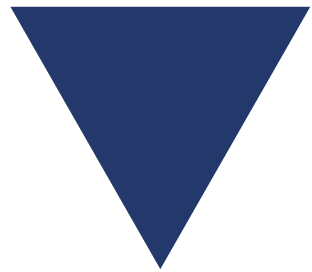


CONTINUED ACTIVITIES

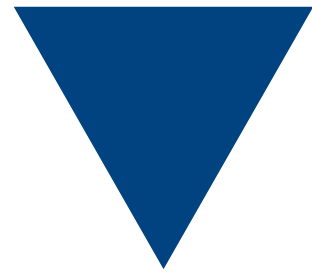
This part of the presentation highlights the **KEY EFFORTS** taken by MACL to open the borders and **RECOVER**



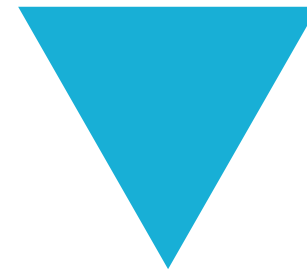
CONTINUED ACTIVITIES



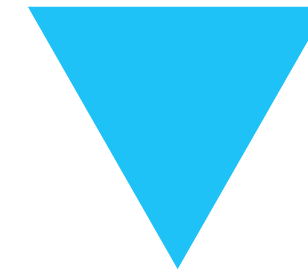
Continued monitoring of the quarantine staff and release of them



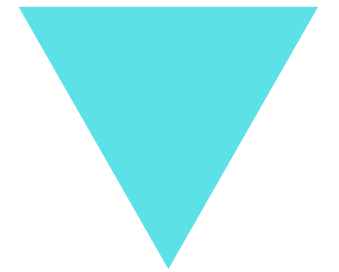
All employees are reminded to adhere to the health guidelines to minimize exposure. Awareness sessions and workshop conducted frequently



Administration of COVID-19 Vaccine to overcome the global crisis



Inspections were continued for the critical infrastructures of the airport in accordance with ICAO Cart



Maldives Immigration implemented IMUGA Portal for Health Declarations

**BCP
IMPLEMENTATION**

**PROMOTING
HEALTH CULTURE**

VACCINATION

**FACILITY
INSPECTION**

**IMUGA
IMPLEMENTATION**

KEY CHALLENGES

LOGISTICS



MACL faced challenges in obtaining PPE from offshore suppliers as the global supply chain was drastically implemented

HUMAN RESOURCE



Increased number of suspected / confirmed cases impacted the airport operations

INFRASTRUCTURE



Capacity constraints to implement social distancing

FINANCIAL



High investment with decreased revenue to ensure that employees, passengers and airport populace were protected from risk of exposure to COVID-19

KEY ACHIEVEMENTS

- ACI Health Accreditation Certificate was awarded in September 2020. Velana International Airport was the second airport from Asia Pacific and the 12th from the world to acquire the ACI Health Accreditation
- Velana International Airport received Voice of Customer Award recognizing the efforts to safe keep the passengers in 2021
- Amongst the first South Asian countries to open the borders for tourism.

One tiny country, however, decided to take a different path.

On July 15, the Indian Ocean archipelago of Maldives threw open its borders to everyone.

The Maldives is now open to all global tourists.
Here's how they're doing it

By Karla Cripps, CNN
Updated 8:45 PM EDT, Wed July 15, 2020



19 devastates tourism

Maldives introduces one of the most open border policies in the world as COVID-19 hits lucrative tourism sector.



At Amillafushi in Baa Atoll, guests are required to undergo a second COVID-19 test on arrival, so they can enjoy a mask-free holiday [Courtesy of Amillafushi]



DID WE LEARN THE LESSON?



Build resilience to overcome unexpected business disruptions and recover to acceptable continuing operations



ARE YOU READY FOR THE NEXT PHE?

MACL collaborated with International Organization for Migration to strengthen its core capacities in accordance with the International Health Regulation. As such IOM entered into a cooperation agreement with Government of Japan (GOJ) on 17th October 2022 to implement the project titled “**Strengthening Capacity of Border Management for Responding to Infectious Disease in Southeast Asia**” to strengthen the overall government and management of capacity in Maldives to prevent the spread of infection diseases that would impede the revitalization of cross-boarder mobility.

Project scope is distributed to **Velana International Airport and Gan International Airport**.

OBJECTIVES ACHIEVED: streamline the boarder management operations at the POE in compliance with the IHR2005 which contribute to revitalization of International travel and return to pre-pandemic levels of cross border mobility.

On 15th August 2023, the POE assessment at the airport was conducted. And below baseline activities have initiated

1. Upgrade the biometric-based staff access control system at VIA
2. Design, Supply and Install fixed temperature screening camera system
3. Supply and installation of TD verified for Immigration
4. Supply of one fully equipped ambulance
5. Upgrade of Isolation Facility
6. Upgrade of healthcare facilities with required equipment.



ARE YOU READY FOR THE NEXT PHE?

It is important to apply a risk-based approach for response to PHE at an airport and address on the business continuity aspects to ensure operationalization of the airport.

1) Health Emergency Risk Early Warning System (HER-EWS) (Actors: MACL, IMUGA ...)



Health Emergency Risk Compliance
in epidemic context

Compliance Management System Manual

(HER-CMS)

of

Maldives Airports Company Limited (MACL) for

Velana International Airport (MLE)

Republic of Maldives

(Standard EIFEC ES2001.06:HBV/HER)

EDITION:	1
ISSUE DATE:	XX May 2021
REFERENCE NUMBER	M.-MNL/2021/XX
REVISION:	0
REVISION DATE:	-
EFFECTIVE DATE:	XX May 2021
COPY NUMBER: MASTER COPY	

Health Emergency Risk Compliance Management System Manual (HER-CMS) © MACL - This is a controlled document as long as it is online. Printed copies of this document are UNCONTROLLED unless marked as controlled copy by the MACL HER Compliance Officer.

This Manual is a responsibility of the HER-CMS of MACL but issued under the authority of the Managing Director of MACL. All rights reserved. This Manual should not be copied, distributed, or reproduced in whole or in part in any form or by any mean or stored in a database or retrieval system without written permission from the company management.



Brief analysis of critical likely non-compliance risks
and recommended remedies / risk mitigation measures
A risk-based approach perspective for MACL Operations

Executive Summary

Epidemic outbreaks of communicable diseases, such as the current COVID-19 pandemic, require an **urgent and nationally coordinated response** to address the huge economic and social consequences.

We need to build **fully resilient Maldives** from an economic, social and institutional perspective, and therefore it is critical to strengthen MACL's role in the Maldives health security framework, since it is the **Gatekeeper** of this "islands nation" against epidemic assaults through the **Velana International Airport** (the key infrastructure hub for travelers moving in and out of the country).

Through an **enhanced collaboration between MACL and the main country stakeholders** (such as IMUGA, HPA, MoH and others to be identified, if any) it is possible to build **stronger capacities and reinforced multisectoral cooperation**, thus enabling a **more rapid, integrated and effective global response to any outbreaks**.

Moving from the external and internal Context, this risk-based approach analysis:

- assesses **MACL's Compliance risks/controls**
- checks reality to identify both **inherent Risk/Compliance risk areas** (mainly, the difficulty of maintaining the respect of physical distancing and the lack of separation of risks) and **main Risk Contact Points** (Arrivals and Baggage Claim area), and
- proposes proper **enhancements and remedies** to fill the existing Compliance gaps.

In particular, together with a **reorganization of airport facilities**, the document proposes to MACL the creation of **two main proactive risk mitigation mechanisms**, to be shared and agreed upon in advance with the competent authorities:

1. **Health Emergency Risk Early Warning System (HER-EWS)**, which similarly to a Tsunami Early Warning System aims to **forecast the potential arrival of new epidemic waves in the country and their relevant negative consequences** not only on the airport but also on the whole country and (at least potentially) on every nation connected by the available air routes, and to **classify each arriving passenger according to a risk level coding**;
2. **Emergency Break Mechanism (EBM)**, based on the HER-EWS tool and capable of allowing MACL to **urgently adopt temporary restrictions** on all incoming travelers classified (or re-classified) under an **"extreme risk" level**.

Both of them could be developed and implemented **within a timeframe of a couple of months**, and EIFEC remains of course available to discuss ways to make its experts available should you need any support to create these mechanisms.

We believe that the adoption of the measures and enhancements proposed in this document would allow Malé International Airport to become **one of the safest and most efficient airport facilities in the world** in terms of health emergency risk control and management in times of epidemics.

MOU SIGNED BETWEEN MACL AND
EIFEC TO IMPLEMENT THE HEALTH
EMERGENCY RISK COMPLIANCE
MANAGEMENT SYSTEM AT VIA.

10 Mar 2021



WHAT MALDIVES COULD OFFER TO STRENGTHEN CAPSCA WITHIN APAC REGION

The Maldives stands out as one of the rare island national that effectively managed the COVID-19 Pandemic, swiftly opening its borders to the outside world in cooperation with both the local stakeholders and international partners. Moreover, the Maldives has established and put into action strong protocols to safeguard against any potential future pandemics.

In this context, the Maldives is eager to welcome and support other island states that wishes to visit and gain insight from our experiences. However, it is essential to note that the Maldives is currently in the process of recovering from financial repercussions of the COVID-19 Crises. As a result, we are unable to commit to any voluntary contributions at this critical stage of economic recovery.

An aerial photograph of a modern architectural complex. A large, multi-story building with a white facade and a grid of windows is the central focus. To its left is a large swimming pool with a wooden deck and several small boats. To its right is a parking lot with several cars. The entire scene is framed by a white, hand-drawn border. The text "THANK YOU" is overlaid in the center of the image.

THANK YOU