



| ICAO

INTERNATIONAL CIVIL AVIATION ORGANIZATION

A UN SPECIALIZED AGENCY

PHE preparedness tools
November 2023

Presentation Overview

01

Transmission of
disease

04

Pandemic tools

02

Other PHE

05

Post-pandemic tools

03

Pre-pandemic tools

06

Next steps

Public health emergencies

Transmission of disease

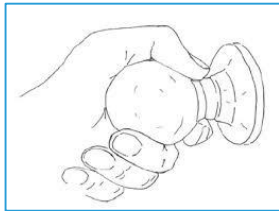
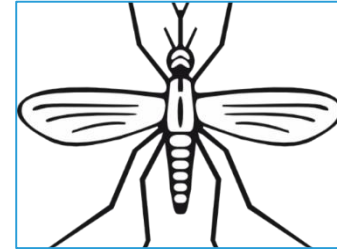
Direct contact



By air



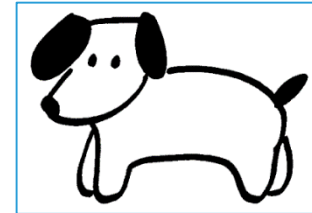
Vectors



Indirect contact

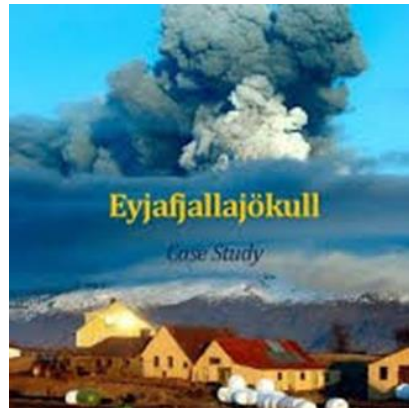
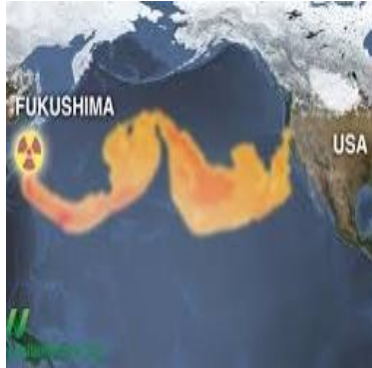


Eating & drinking

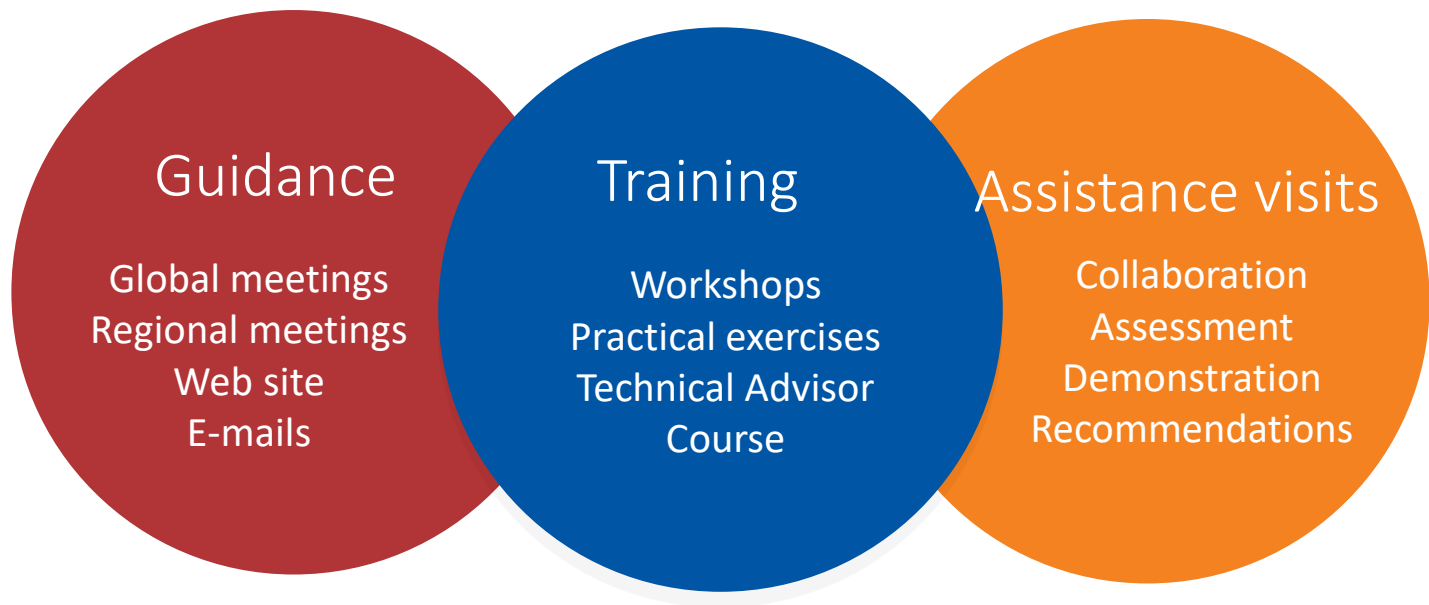


Animals

Other PHE



Pre-pandemic tools





Objectives

- Promote and facilitate communication, coordination and collaboration between the civil aviation and public health sectors.
- Awareness training on ICAO and WHO Public Health Emergency (PHE) requirements for the aviation sector.
- Evaluate existing PHE provisions in the aviation system – gap analysis.
- Assist States by providing expert, technical advice.

CAPSCA arranges joint ICAO/WHO assistance visits to States and international airports, with a team of experts in aviation and public health to evaluate current capacity, identify areas which need strengthening, key priority actions and to facilitate training for aviation and health professionals who are involved in public health event planning in the aviation sector.

The visit usually takes two days and undertake a gap analysis of national/local preparedness plans against the relevant ICAO SARPs, the WHO International Health Regulations (2005), and associated guidance material to ensure that harmonised and relevant policies, training and communication procedures are in place. A confidential report is provided that helps the State to develop and improve its preparedness plan.

The visit is arranged upon request and on a cost-recovery basis. To date, approximately 80 Assistance Visits have been undertaken globally.

All States and international airports are invited to request an assistance visit to make sure that their preparedness level is up-to-date to manage public health events in aviation especially in view of the fact that disease outbreaks are occurring more often and spreading more faster, imposing significant costs on human life and the global economy.

www.icao.int/capsc

Assistance Visit Scope

- PHE planning & preparedness in the civil aviation system
- All stakeholders involved in a response to a PHE in the aviation system
- Not an audit nor certification
- Voluntary and confidential



Airport Visit Methodology

Visit shall not affect normal airport operations

The visit should demonstrate preparedness for management of a PHE

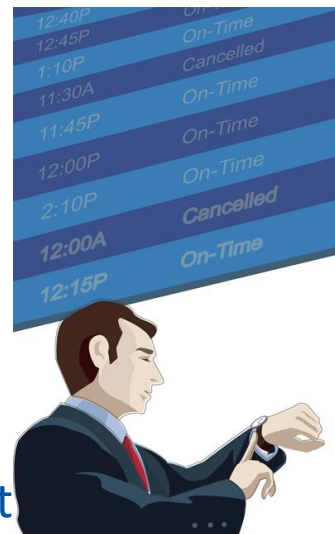
Scenario: Public health risk, national, on board an aircraft or in the vicinity of the airport

Walkthrough observations and interviews

Recommendations for improvements

Assistance Visit Activities

- 2 days
 - Day 1
 - Meeting/Briefings
 - Day 2 - am
 - Airport visit
 - Exercise demonstration (optional)
 - Day 2 - pm
 - De-briefing meeting to discuss the visit result



Historical flight data origin airports

Airports in DRC

No of departing passengers
Year 2018

Same breakdown for destination
airports and passenger transfers

Airport	Airport name	Domestic pax	Intl pax	Total pax	Total %
FIH	Ndjili - Kinshasa	250,478	298,672	549,150	49.8%
FBM	Lubumbashi	119,760	85,496	205,256	18.6%
GOM	Goma	110,306	16,431	126,737	11.5%
MJM	Mbuji Mayi	43,992	7,977	51,969	4.7%
FKI	Bangoka - Kisangani	40,215	1,058	41,273	3.7%
KND	Kindu	26,862	-	26,862	2.4%
KGA	Kananga	17,189	-	17,189	1.6%
FMI	Kalemie	15,560	-	15,560	1.4%
BKY	Bukavu Kavumu	15,114	-	15,114	1.4%
BUX	Bunia	14,608	-	14,608	1.3%
MDK	Mbandaka	14,249	-	14,249	1.3%
GMA	Gemena	12,109	-	12,109	1.1%
BNC	Beni	6,915	-	6,915	0.6%
IRP	Matari	3,593	-	3,593	0.3%
LJA	Lodja	2,385	-	2,385	0.2%
KWZ	Kolwezi	261	-	261	0.0%
BMB	Bumbar	224	-	224	0.0%
LIQ	Lisala	172	-	172	0.0%

Flight connection data

List of Connected State or Territory

Show entries

State or Territory	Flights Number
Ethiopia	32
South African Rep	17
Congo, Rep Of	14
Kenya	14
Belgium	12
Togo	11
Gabon	9
Uganda	7
France	5
Morocco	4

Showing 1 to 10 of 14 entries

Previous 2 Next

highcharts.com

List of Connected Airport

Show entries

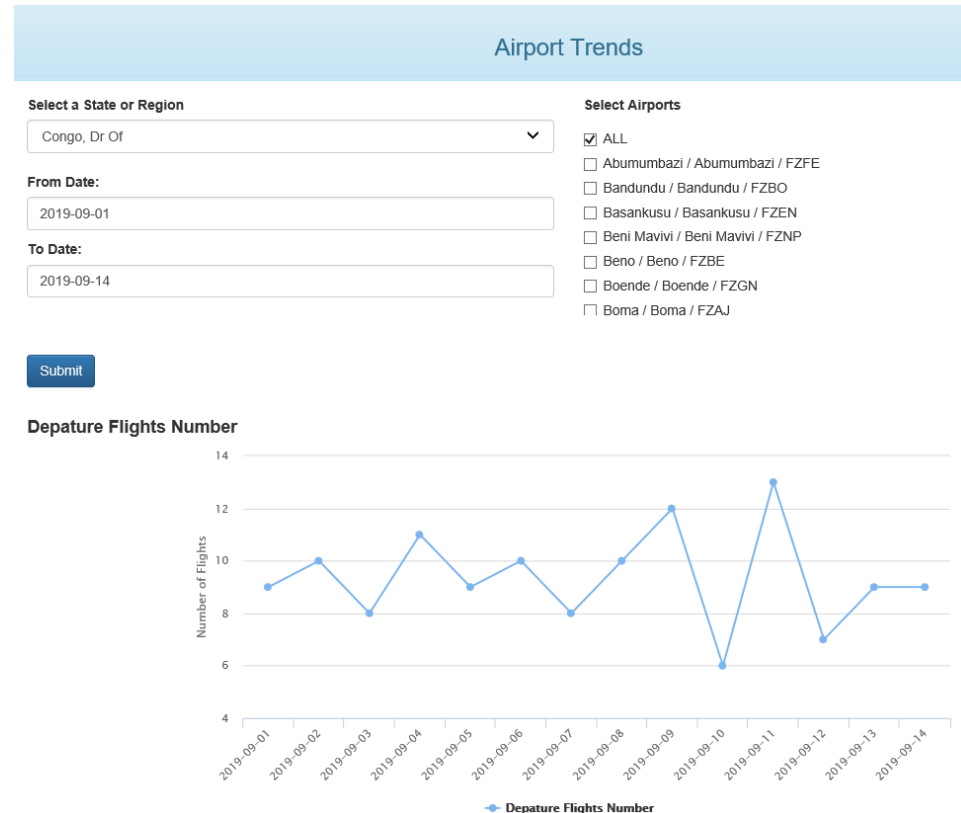
Airport	Flights Number
HAAB / Bole Intl / Ethiopia	32
FAOR / O.R. Tambo Intl / South African Rep	17
HKJK / Jomo Kenyatta Intl / Kenya	14
EBBR / Brussels National / Belgium	12
DXXX / Gnassingbe Eyadema / Togo	11
FOOL / Leon M'BA / Gabon	9
FCBB / Maya-Maya / Congo, Rep Of	8
HUEN / Entebbe Intl / Uganda	7
FCPP / Antonio Agostinho Neto / Congo, Rep Of	6
LFPG / Charles-De-Gaulle / France	5

Showing 1 to 10 of 15 entries

Previous 2 Next

Real-time flight data and NOTAMS

- Select the State, the airport and time period
- Provides number of international departures, destination countries and destination airports
- Can compare trends



Airport vector control

- Spraying, trapping etc. of insects or animals
- Vector free area within 400 meters of airport perimeter
- ICAO vector control register

Tutorial

Request credential verification and access to register an airport

Map Satellite

Show 10 entries

Search:

Airport Code	Name/City	Country	Register Entry Created
CYYZ	Lester B Pearson Intl - Toronto	Canada	9/22/2016 8:52:50
DNBE	Benin - Benin	Nigeria	10/10/2016 16:08:02

Aviation decision making tool

Scientifically based risk assessment model for aircraft disinsection

- Vector distribution maps
- Pathogen epidemiology and transmission
- Airport vector control measures
- Aircraft routes and disinsection methods

Vector: Please select...

Month: Please select...

Region: Please select...

Departure Airport: Please select...

Arrival Airport: Please select...

Airline: Please select...

Submit

Pandemic tools

Public Health Corridor Application (PHC App)

- Online tool to facilitate the conclusion of PHC between States (bilateral/multilateral)
- On the CRRIC Website
- Contains:
 - PHC Arrangement template (suggested best practices for provisions to be included)
 - Appendix A: Scope of the PHC (flights, capacity, etc.)
 - Appendix B: Disease Translocator Risk Level (traffic light categorization)
 - Appendix C: Measures of a mutually agreed Multi-layer Risk Management Strategy
- Highly-customizable; generates arrangement for print or further editing

Select a State or Region:

APAC

Add State(s)

[Clear all](#)

Public Health Corridor

Partner List:

General Provisions

Background

In response to the criticality of the COVID-19 pandemic, the Government/Administration of [State A] and the Government/Administration of [State B] (hereinafter, "the Parties") have agreed to establish a Public Health Corridor (herein referred to as "PHC") outlining a framework of commonly agreed measures for safe air travel between the Parties.

[Read more/less](#)

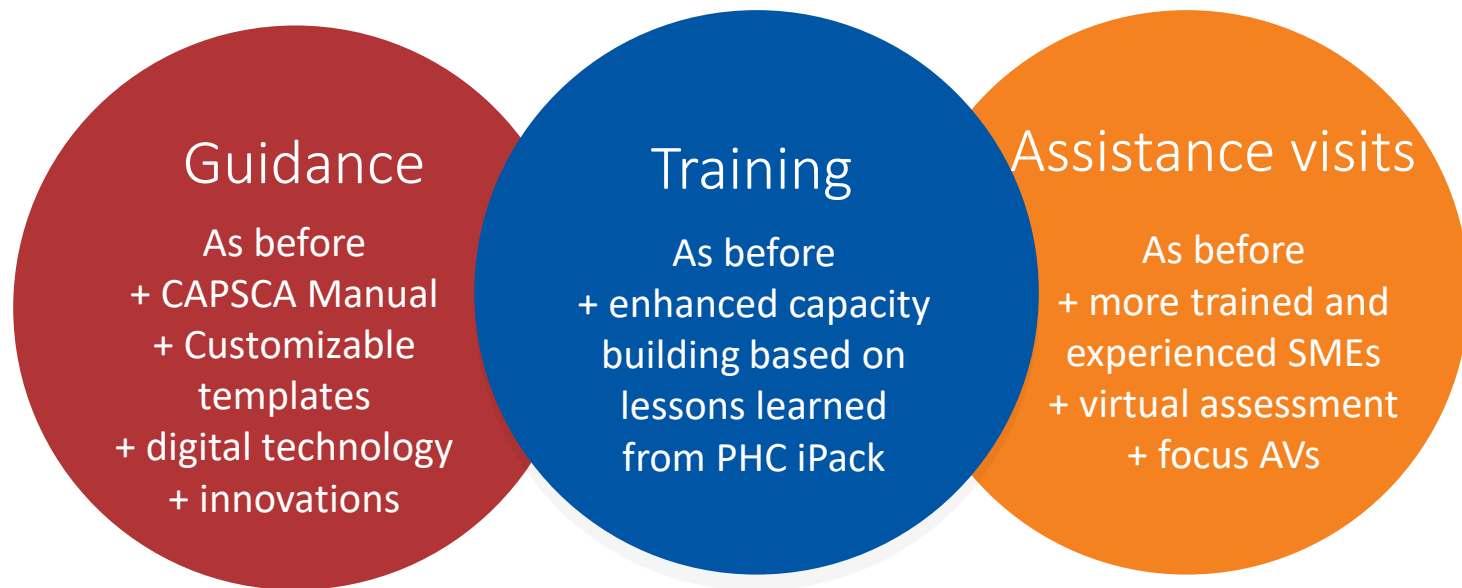
Appendix A - Routes

In order to start your arrangement, please input the operators and airport information in order to identify the routes to be established.

This arrangement is applicable to the following operators and routes as applicable.

Operator Name and code	From Airport Name and Code	To Airport Name and Code	Weekly passenger capacity
<input type="text" value="Any"/>	<input type="text" value="Any"/>	<input type="text" value="Any"/>	<input type="text" value="Any"/>
<div>Add</div>			

Post-pandemic tools



Next Steps



Thank You