

# CTO trial operation within Fukuoka FIR

---

ATFM/SG/13

Apr 3rd-7th 2023

Japan

- ▶ Only GDP for flights to RJTT

Delays are assigned to domestic flights only.

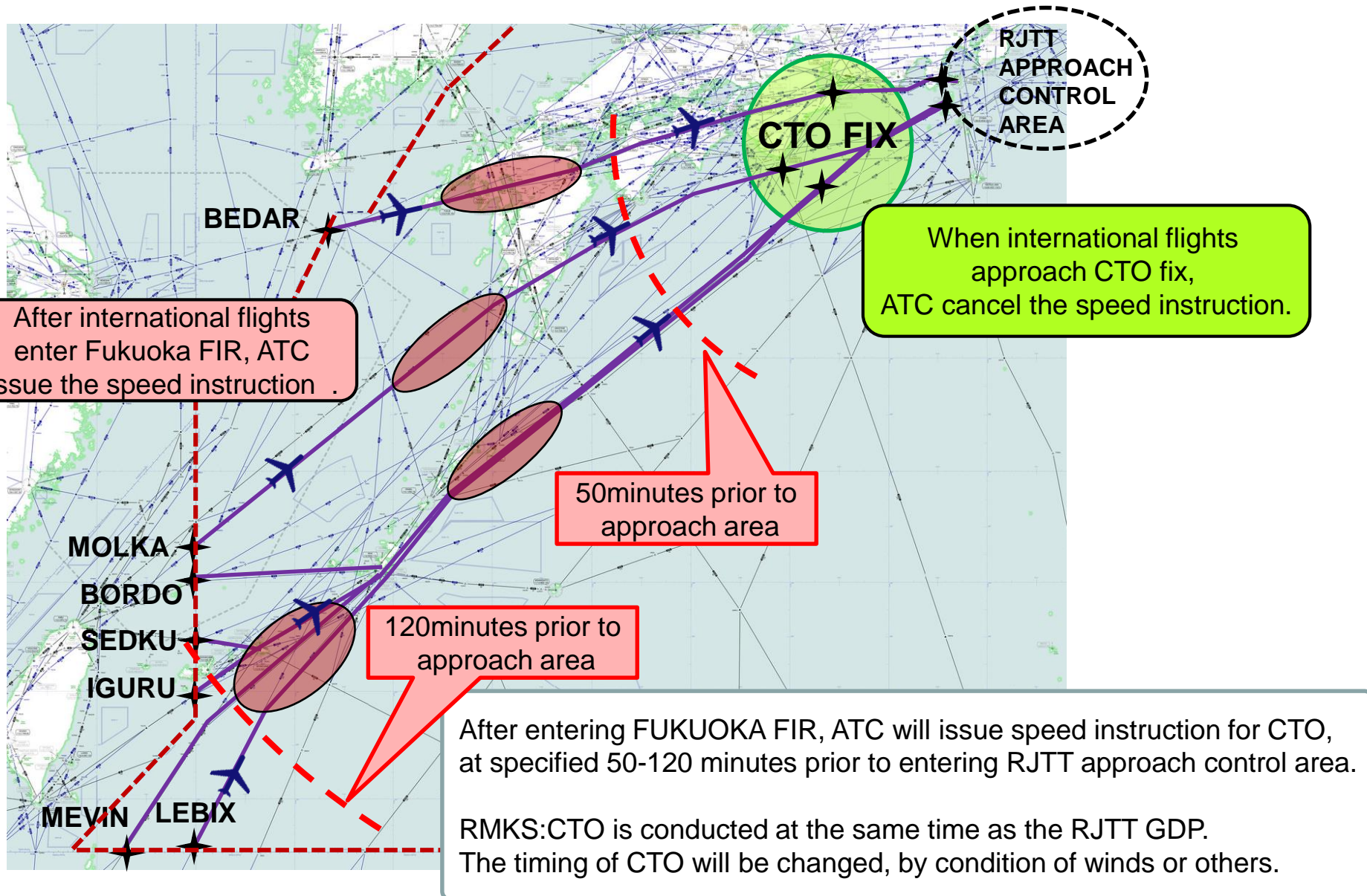
- ▶ CTO conducted at the same time as the RJTT GDP

Delays are distributed

between domestic and international flights.

Japan conducted the first CTO trial at the Fukuoka FIR to verify the above benefits. (August 2011 - September 2014)

However, it was suspended due to CTO assigned logic.



## Benefits of CTO

- ▶ Only GDP for flights to RJTT

Delays are assigned to domestic flights only.

- ▶ CTO conducted at the same time as the RJTT GDP

Delays are distributed

between domestic and international flights.

*Japan will conduct CTO trials to verify that it can achieve the above benefits of long-haul flights entering other FIRs, even within Fukuoka FIR, and will establish the basis for considering Long-Range ATFM.*