



ICAO

International Civil Aviation Organization

Eighth Meeting of the ICAO Asia/Pacific Search and Rescue Working Group (APSAR/WG/8)

Bangkok, Thailand, 22 – 25 May 2023

Agenda Item 4: Asia/Pacific and inter-regional SAR planning, coordination and cooperation

REGIONAL AIR NAVIGATION PLAN UPDATE

(Presented by Secretariat)

SUMMARY

This paper presents an update on the Asia/Pacific Regional Air Navigation Plan (ANP). Meeting participants are invited to review the data affecting their administration and provide feedback to ICAO on the data's accuracy.

1. INTRODUCTION

1.1 The Asia/Pacific Regional Air Navigation Plan (ANP - State letters Ref.: T 11/2.1 – AP034/16 and T 11/2.1 – AP051/16 referred), adopted a common, new ANP template, which was approved by the ICAO Council for use by all ICAO Regions. The ANP Volumes I, II and III are available on the ICAO Asia/Pacific Regional Office website at:

<https://www.icao.int/APAC/Pages/APAC-eANP.aspx>

2. DISCUSSION

Background

2.1 The development of the new Asia/Pacific Regional Air Navigation Plan (ANP), replacing ICAO Doc. 9673 – *Asia and Pacific Regions Regional Air Navigation Plan*, has been discussed since 2017. Proposals for Amendment (PfAs) for Flight Information Regions (FIR) and Search and Rescue Regions (SRR) data in ANP Volume I require approval of the Council of ICAO. States should note that, since Doc. 9673 did not provide a legal description of the FIRs in the first place, it is very important for States to understand that this process of checking, alignment and validation is crucial if they would like a formal basis for their FIRs. Furthermore, submission of a PfA for SRR data would enable the establishment by States of SRRs under the provisions of Annex 12.

2.2 To facilitate the PfA process, ICAO urged States to urgently review the FIR/SRR data of those FIRs and SRRs related to their administration that were not yet included in the ANP Volume I Tables ATM I-1 and SAR I-1 and provide feedback to the Regional Office on the data's accuracy.

2.3 As Flight Information Regions (FIRs) were considerably more difficult to establish than Search and Rescue Regions (SRRs) with issues such as air navigation charges and the establishment of Special Use Airspace (SUA) being factors for States, the review of FIRs was being conducted first. In addition, many SRRs were of dimensions similar to their associated FIRs, so this would be an easier task if the FIR dimensions were already established.

2.4 The exercise to review the ANP with FIR & SSR coordinates should be based on ICAO historical records and not new proposal for changes. Some States have submitted major amendments to their FIRs during the review process. These will only be considered if the change only affects the national airspace and not the neighbouring airspace, or if all parties agreed with the change proposal before submission to ICAO.

PfA Process

2.5 The Proposal for Amendment (PfA) process for FIRs and SRRs are now the same process of approval in the ANP Volume I (approval of the Council). The flow diagram detailing the verification steps before entry into the ANP can be found in **Attachment A**. A Proposal for Amendment (PfA) Template is provided on the ICAO Asia/Pacific website at:

<https://www.icao.int/APAC/Pages/APAC-eANP.aspx>

2.6 States should note that PfAs for either the ANP or the Regional Supplementary Procedures (Document 7030) should include in the distribution list all the States of Registry of any airspace or airport or facility user that may be affected by the items proposed for amendment.

2.7 Four State Letters were issued on this matter and all States/Administrations have responded. The overall feedback from the consultation by State Letters is summarized at **Attachment B**.

2.8 The draft eANP Table SAR I-1 is at **Attachment C**.

2.9 **Attachment D** provides details of the historical data available at the Regional Office for each amendment that was approved, either by a Regional Air Navigation (RAN) meeting or by a PfA to the Regional Air Navigation Plan.

2.10 Once published, States will need to file a PfA for any change to the Air Navigation Plan. Moreover, those States that have not had their FIRs/SRRs published in the ANP should note that ICAO cannot confirm the legal status of these FIRs/SRRs until such time in the future when they have been approved by the ICAO Council.

2.11 The following States PfAs concerning SRRs have been approved by the council and incorporated into the APAC ANP.

- Lao PDR;
- Maldives;
- Nauru;
- Nepal;
- Papua New Guinea;
- Mongolia

2.12 The following States SRRs PfAs are awaiting submission to ICAO council

- Australia
- China (Beijing, Lanzhou, Sanya & Wuhan)
- Malaysia (Kuala Lumpur & Kota Kinabalu)
- Philippines
- Singapore

2.13 SRRs PfAs submitted by following States that require further follow-up with adjacent states

- New Zealand
- Republic of Korea

2.14 The current status of SRR verifications is indicated in **Figure 1**:

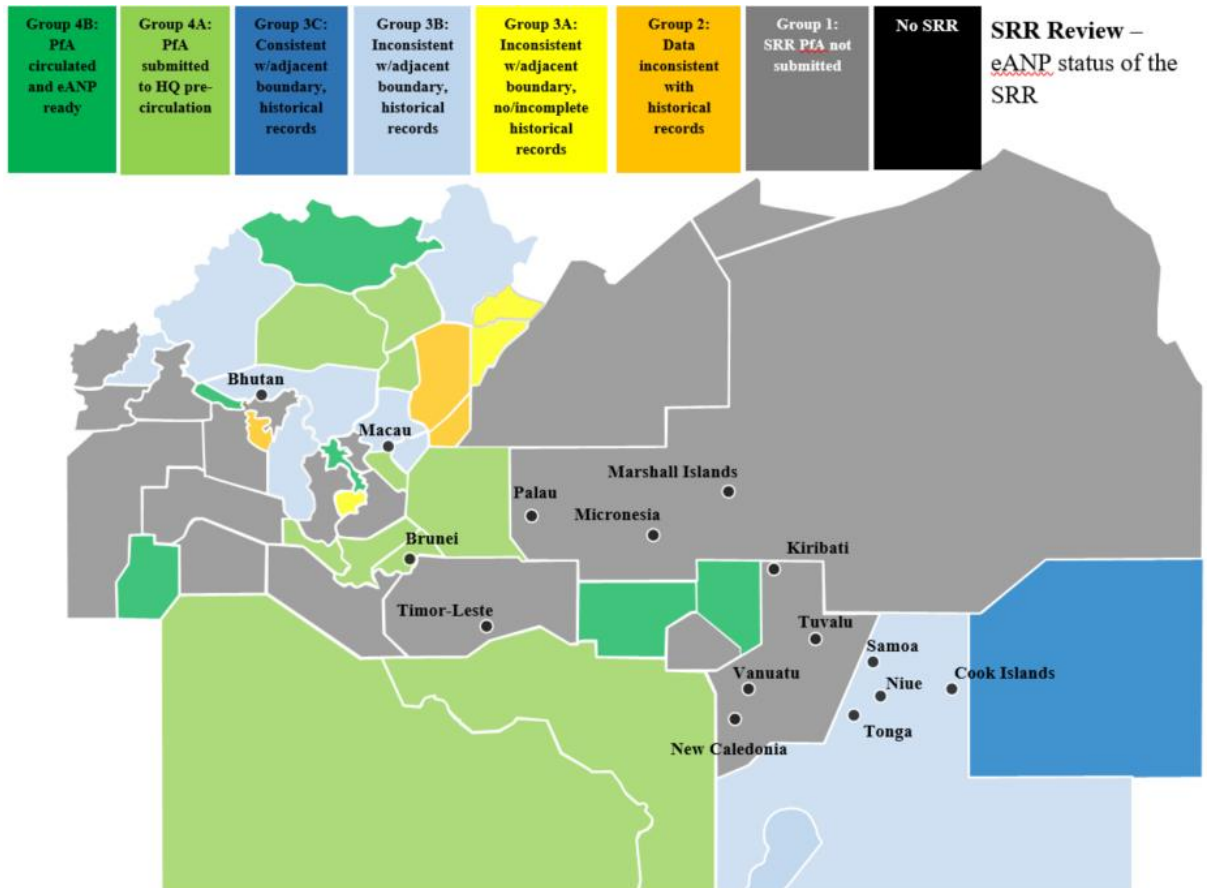


Figure 1: SRR Verification Status, as at May 2023

DISCLAIMER: The presentation of material in this paper does not imply the expression of any opinion whatsoever on the part of ICAO, APANPIRG the ATM Sub-Group of APANPIRG or APSAR/WG concerning the legal status of any country, territory, city or area of its authorities, or concerning the delimitation of its frontiers or boundaries.

Other ANP Provisions

2.15 APSAR/WG/8 is reminded that the Regional ANP Volume II Part I Section 3 (**Attachment E** to this paper) contains special provisions for the establishment and maintenance of a National Air Navigation Plan (NANP) that contains Basic Planning Elements (BPEs), which align with the ANP. These NANP requirements include SAR planning as part of a whole-of-government approach, to ensure an integrated and harmonized planning in accordance with the national priorities of State governments.

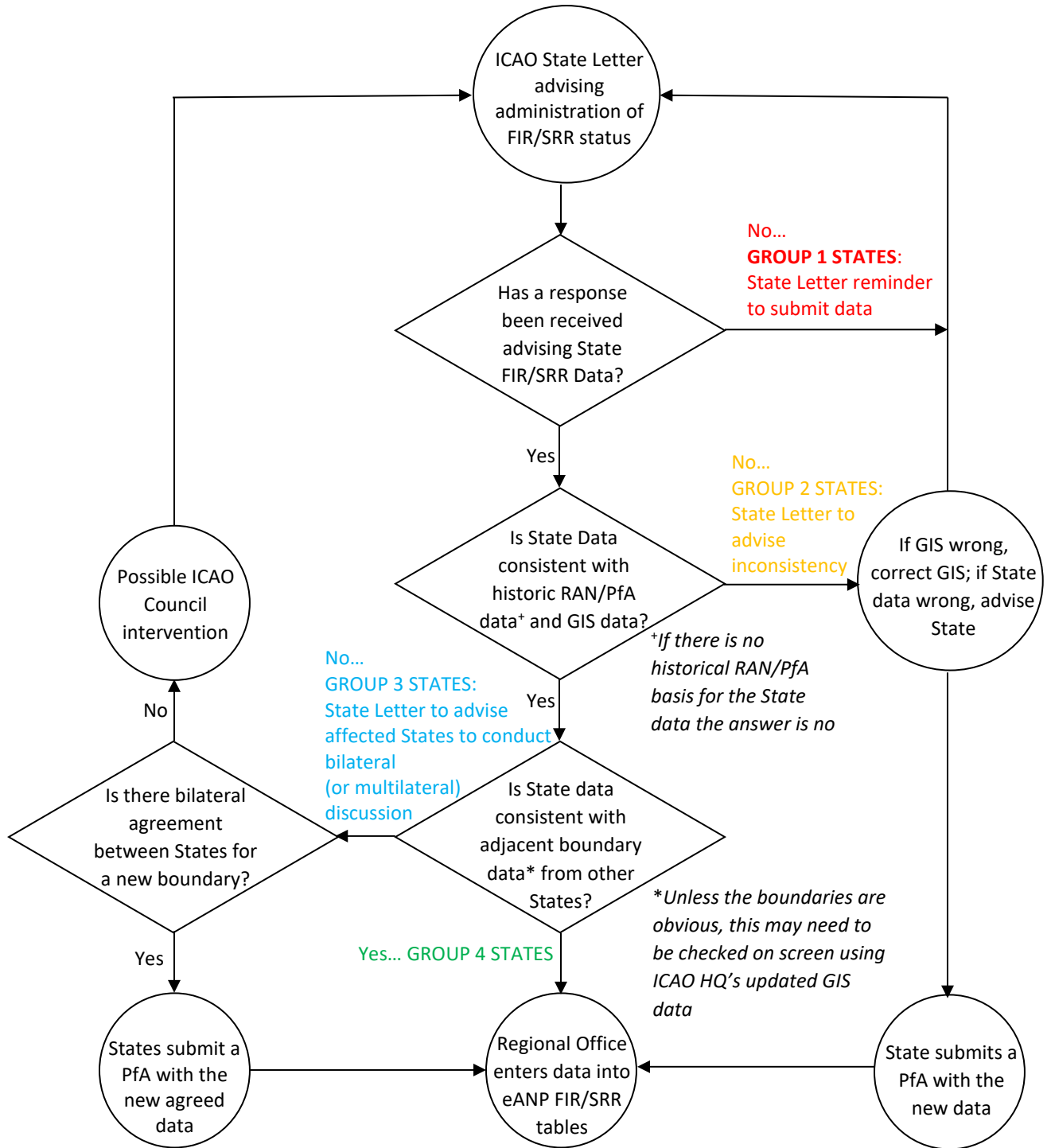
3. ACTION BY THE MEETING

3.1 The meeting is invited to:

- a) note the information contained in this paper;
- b) review the SRR data, including its alignment with relevant FIR data, related to their administration to be included in draft Table SAR I-1 (**Attachment C**) and provide feedback to ICAO on the data's accuracy;
- c) where the data has been verified, to submit the proposal for amendment to ICAO accordingly; and
- d) discuss any relevant matters as appropriate.

.....

Attachment A - eANP FIR/SRR Review Process Flow Diagram



FIR/SRR Review Consultation

STATE (in grey, no response)	FIR Name	Location Indicator	1st round response to SL ref.: T 3/10.1.3 – AP043/15 (ATM)	2nd round response to SL ref.: T 3/3.7 – AP153/15 (ATM)	3rd round response to SL ref.: T 3/3.7 – AP039/16 (ATM)	4th round response to SL ref.: T 3/3.6, T 3/3.7, T 3/3.8 – AP105/18 (ATM)	SRR Name	1st round response to SL ref.: T 3/3.7 – AP153/15 (ATM)	2nd round response to SL ref.: T 3/3.7 – AP039/16 (ATM)	3rd round response to SL ref.: T 3/3.6, T 3/3.7, T 3/3.8 – AP105/18 (ATM)	4th round response to SL ref: T 3/3.6, T 3/3.7, T 3/3.8 – AP128/19 (ATM)
Afghanistan	KABUL	OAKX	No	No	No	Yes	KABUL	No	No	Yes	Yes
Australia	BRISBANE	YBBB	Yes	Yes	Yes	Yes	AUSTRALIA	Yes	Yes	Yes	Yes
Australia	MELBOURNE	YMMM	Yes	Yes	Yes	Yes	--	--	--	--	--
Bangladesh	DHAKA	VGFR	Yes	No	Yes	Yes	DHAKA	No	Yes	Yes	Yes
Cambodia	PHNOM PENH	VDPP	No	No	No	Yes	PHNOM PENH	No	No	Yes	Yes
China	BEIJING	ZBPE	Yes	No	Yes	Yes	BEIJING	No	Yes	Yes	Yes
China	GUANGZHOU	ZGZU	Yes	No	Yes	Yes	GUANGZHOU	No	Yes	Yes	Yes
China	HONG KONG	VHHK	Yes	Yes	Yes	Yes	HONG KONG	Yes	Yes	Yes	Yes
China	KUNMING	ZPKM	Yes	No	Yes	Yes	KUNMING	No	Yes	Yes	Yes
China	LANZHOU	ZLHW	Yes	No	Yes	Yes	LANZHOU	No	Yes	Yes	Yes
China	SANYA	ZJSA	Yes	No	Yes	Yes	SANYA	No	Yes	Yes	Yes
China	SHANGHAI	ZYSH	Yes	No	Yes	Yes	SHANGHAI	No	Yes	Yes	Yes
China	SHENYANG	ZYSH	Yes	No	Yes	Yes	SHENYANG	No	Yes	Yes	Yes
China	URUMQI	ZWUQ	Yes	No	Yes	Yes	URUMQI	No	Yes	Yes	Yes
China	WUHAN	ZHWH	Yes	No	Yes	Yes	WUHAN	No	Yes	Yes	Yes
China	TAIBEI	RCAA	No	No	No	Yes	TAIBEI	No	No	Yes	Yes
DPR Korea	PYONGYANG	ZKKP	No	No	Yes	No	PYONGYANG	No	Yes	No	No
French Polynesia (France)	TAHITI	NTTT	No	No	Yes	Yes	TAHITI	No	Yes	Yes	Yes
India	CHENNAI	VOMF	Yes	No	Yes	Yes	CHENNAI	No	Yes	Yes	Yes
India	DELHI	VIDF	Yes	No	Yes	Yes	DELHI	No	Yes	Yes	Yes
India	KOLKATA	VECF	Yes	No	Yes	Yes	KOLKATA	No	Yes	Yes	Yes
India	MUMBAI	VABF	Yes	No	Yes	Yes	MUMBAI	No	Yes	Yes	Yes
Indonesia	JAKARTA	WIIF	No	No	No	Yes	JAKARTA	No		Yes	Yes
Indonesia	UJUNG PANDANG	WAAF	No	No	No	Yes	UJUNG PANDANG	No	No	Yes	Yes
Indonesia	--	--	--	--	--	--	BALI	No	No	--	Yes
Indonesia	--	--	--	--	--	--	BLAK	No	No	--	Yes
Fiji	NADI	NFFF			Yes	Yes	NADI	No	Yes	Yes	Yes
Japan	FUKUOKA	RJJJ	Yes	Yes	Yes	Yes	TOKYO	Yes	Yes	Yes	Yes
Japan	--	--	--	--	--	--	NAHA	No	No	--	Yes
Lao PDR	VIENTIANE	VLAO	No	No	No	Yes	VIENTIANE	No	No	Yes	Yes

STATE (in grey, no response)	FIR Name	Location Indicator	1 st round response to SL ref.: T 3/10.1.3 – AP043/15 (ATM)	2 nd round response to SL ref.: T 3/3.7 – AP153/15 (ATM)	3 rd round response to SL ref.: T 3/3.7 – AP039/16 (ATM)	4 th round response to SL ref.: T 3/3.6, T 3/3.7, T 3/3.8 – AP105/18 (ATM)	SRR Name	1 st round response to SL ref.: T 3/3.7 – AP153/15 (ATM)	2 nd round response to SL ref.: T 3/3.7 – AP039/16 (ATM)	3 rd round response to SL ref.: T 3/3.6, T 3/3.7, T 3/3.8 – AP105/18 (ATM)	4 th round response to SL ref.: T 3/3.6, T 3/3.7, T 3/3.8 – AP128/19 (ATM)
Malaysia	KOTA KINABALU	WBFC	No	No	Yes	Yes	KOTA KINABALU	No	No	Yes	Yes
Malaysia	KUALA LUMPUR	WMFC	No	No	Yes	Yes	KUALA LUMPUR			Yes	Yes
Maldives	MALE	VRMF	No	Yes	Yes	Yes	MALE	Yes	Yes	Yes	Yes
Mongolia	ULAANBAATAR	ZMUB	No	No	No	Yes	ULAANBAATAR	No	No	Yes	Yes
Myanmar	YANGON	VYYY	No	No	Yes	Yes	YANGON	No	No	Yes	Yes
Nauru	NAURU	ANAU	No	No	Yes	Yes	NAURU	No	Yes	No	Yes
Nepal	KATHMANDU	VNSM	No	No	Yes	Yes	KATHMANDU	No	Yes	Yes	Yes
New Zealand	AUCKLAND OCEANIC	NZZO	Yes	Yes	Yes	Yes	NEW ZEALAND	Yes	Yes	Yes	Yes
New Zealand	NEW ZEALAND	NZZC	Yes	Yes	Yes	Yes		--	--	--	--
Pakistan	KARACHI	OPKR	No	No	Yes	Yes	KARACHI	No	Yes	Yes	Yes
Pakistan	LAHORE	OPLR	No	No	Yes	Yes	LAHORE	No	Yes	Yes	Yes
Papua New Guinea	PORT MORESBY	AYPM	No	No	No	Yes	PORT MORESBY	No	No	Yes	Yes
Philippines	MANILA	RPHI	No	Yes	Yes	Yes	MANILA	Yes	Yes	Yes	Yes
Republic of Korea	INCHEON	RKRR	No	Yes	No	Yes	INCHEON	Yes	No	Yes	Yes
Singapore	SINGAPORE	WSJC	Yes	Yes	Yes	Yes	SINGAPORE	Yes	Yes	Yes	Yes
Solomon Islands	HONIARA	AGGG	No	No	No	Yes	HONIARA			No	Yes
Sri Lanka	COLOMBO	VCCF	No	No	Yes	Yes	COLOMBO		Yes	Yes	Yes
Thailand	BANGKOK	VTBB	Yes	No	Yes	Yes	BANGKOK	Yes		Yes	Yes
United States of America	ANCHORAGE OCEANIC	PAZA	Yes	Yes	Yes	Yes	HONOLULU	Yes	Yes	Yes	Yes
United States of America	OAKLAND OCEANIC	KZAK	Yes	Yes	Yes	Yes	JUNEAU	Yes	Yes	Yes	Yes
United States of America	--	--	--	--	--	--	ELMENDORF	No	No	--	Yes
United States of America	--	--	--	--	--	--	SAN FRANCISCO	No	No	--	Yes
Viet Nam	HANOI	VVVV	Yes	No	No	Yes	HANOI	Yes	No	Yes	Yes
Viet Nam	HO CHI MINH	VVTS	Yes	No	No	Yes	HO CHI MINH	Yes	No	Yes	Yes

Follow up action:

S/No.	STATE	FIR	Remarks
01	Afghanistan	Kabul	FIR PfA 19/25-ATM approved by President of the Council. Incorporated in ANP. SSR – PfA not submitted to ICAO APAC Regional Office.
02	Australia	Melbourne Brisbane	FIR PfA 19/36-ATM (Melbourne) approved by President of the Council. Incorporated in ANP. FIR PfA 20/17-ATM (Brisbane) approved by President of the Council. Incorporated in ANP. SRR - PfA 21/22-ATM approved by HQ. PfA circulated to States on 23 Nov 2021. Awaiting submission to Council
03	Bangladesh	Dhaka	FIR & SRR PfA submitted to APRO. Coordination with India and Myanmar required.
04	Cambodia	Phnom Penh	FIR & SRR PfA submitted to APRO. Coordination with Viet Nam and Thailand required.
05	China	Beijing, Guangzhou, Hong Kong, Kunming, Lanzhou, Sanya, Shanghai, Shenyang, Urumqi, Wuhan, Taibei	PfA 20/13-ATM (Sanya) approved by President of the Council. Incorporated in ANP. PfA 20/14 (Wuhan) approved by President of the Council. Incorporated in ANP. PfA 20/15-ATM (Beijing) and PfA 20/16-ATM (Lanzhou) approved by President of the Council. Incorporated in ANP. PfA 20/12-ATM (Hong Kong) is on hold. The boundary between Guangzhou and Hong Kong FIRs is being further enhanced. SRR – PfA 21/18 ATM (Beijing), 21/19 ATM (Lanzhou), 21/20 ATM (Sanya), 21/21 ATM (Wuhan), Awaiting submission to Council
06	DPR Korea	Pyongyang	No FIR data provided. SSR – PfA submitted on 23 March 2023, pending processing.
07	French Polynesia	Tahiti	FIR PfA 19/10-ATM circulated to HQ on 10 Jun 2019. PfA on hold due to possible extension of FIR. SRR PfA subject to further coordination
08	India	Chennai, Delhi, Mumbai Kolkata	FIR PfA 19/32-ATM (Mumbai), FIR PfA 19/33-ATM (Chennai) and FIR PfA 19/34 – ATM (Delhi) approved by President of the Council. Incorporated in ANP. Kolkata FIR PfA submitted to APRO. Coordination with Bangladesh and Bhutan required. SSR – PfA not submitted to ICAO APRO
09	Indonesia	Jakarta Ujung Pandang	FIR PfA 20/32-ATM (Jakarta) and PfA 20/33-ATM (Ujung Pandang) approved by President of the Council. Incorporated in ANP. SSR – PfA not submitted to ICAO APRO
10	Fiji	Nadi	FIR PfA 19/11-ATM approved by President of the Council. Incorporated in ANP. SSR – PfA not submitted to ICAO APRO

S/No.	STATE	FIR	Remarks
11	Japan	Fukuoka	FIR PfA 19/35-ATM circulated to HQ. PfA on hold due to discrepancies with Russia/Khabarovsk FIR. SSR – PfA not submitted to ICAO APRO subject to FIR PfA.
12	Lao PDR	Vientiane	FIR PfA 20/44-ATM approved by President of the Council. Incorporated in ANP. SRR - PfA 21/05-ATM approved by President of Council. SRR data incorporated into ANP.
13	Malaysia	Kuala Lumpur Kota Kinabalu	FIR PfA 20/34-ATM (Kuala Lumpur) and PfA 20/35-ATM (Kota Kinabalu) approved by President of the Council. Incorporated in ANP. SRR - 21/16 ATM (Kuala Lumpur), 21/17 ATM (Kota Kinabalu), Awaiting submission to Council
14	Maldives	Male	FIR PfA 19/09-ATM approved by President of the Council. Incorporated in ANP. SRR - PfA 21/04-ATM approved by President of Council. SRR data incorporated into ANP.
15	Mongolia	Ulaanbaatar	FIR PfA 19/21-ATM approved by President of the Council. Incorporated in ANP. SRR - PfA 21/09-ATM approved by President of Council. SRR data incorporated into ANP.
16	Myanmar	Yangon	FIR SRR PfA submitted to APRO. Coordination with Thailand and Bangladesh required.
17	Nauru	Nauru	FIR PfA 20/45-ATM approved by President of the Council. Incorporated in ANP. SRR - PfA 21/10-ATM approved by President of Council. SRR data incorporated into ANP.
18	Nepal	Kathmandu	FIR PfA 20/37-ATM approved by President of the Council. Incorporated in ANP. SRR - PfA 21/03-ATM approved by President of Council. SRR data incorporated into ANP.
19	New Zealand	New Zealand Auckland Oceanic	FIR PfA 19/26-ATM (New Zealand) and 19/27-ATM (Auckland Oceanic) approved by President of the Council. Incorporated in ANP. SRR PfA submitted to ICAO APRO and subject to further coordination
20	Pakistan	Karachi Lahore	FIR PfA 19/15-ATM (Lahore FIR) approved by HQ. PfAs circulated to States on 12 March 2020. PfA on hold and subject to further coordination. SRR PfA submitted to ICAO APRO and subject to further coordination.
21	Papua New Guinea	Port Moresby	FIR PfA 20/19-ATM (Port Moresby) approved by President of the Council. Incorporated in ANP. SRR - PfA 21/06-ATM approved by President of Council. SRR data incorporated into ANP.
22	Philippines	Manila	FIR PfA 19/12-ATM approved by President of the Council. FIR data incorporated into ANP. SRR - PfA 21/11-ATM approved by HQ. Awaiting submission to Council
23	Republic of Korea	Incheon	FIR PfA 19/07-ATM circulated to HQ on 19 Apr 2019. PfA on hold and subject to further coordination. SRR PfA submitted to ICAO APAC and subject to further coordination
24	Singapore	Singapore	FIR PfA 20/36-ATM approved by President of the Council. Incorporated in ANP.

S/No.	STATE	FIR	Remarks
			SRR - PfA 21/14-ATM approved by HQ. Awaiting submission to Council
25	Solomon Islands	Honiara	PfA 20/18-ATM approved by President of the Council. Incorporated in ANP. SSR – PfA not submitted to ICAO APRO
26	Sri Lanka	Colombo	PfA 19/31 ATM approved by President of the Council. Incorporated in ANP. SSR – PfA not submitted to ICAO APRO
27	Thailand	Bangkok	FIR PfA submitted to APRO. Coordination with Viet Nam and Cambodia required. SSR – PfA not submitted to ICAO APRO
28	USA	Oakland Oceanic Anchorage Oceanic	FIR PfA 19/29-ATM (Anchorage Oceanic) and 19/30-ATM (Oakland Oceanic) approved by President of the Council. Incorporated in ANP. SSR – PfA not submitted to ICAO APRO
29	Viet Nam	Ha Noi Ho Chi Minh	FIR PfA submitted to APRO. Coordination with Cambodia and Thailand required. SSR – PfA not submitted to ICAO APRO

Legend

- PfA approved by President of Council and entered into ~~eANP~~
- PfA circulated to ICAO HQ, justification/coordination required
- PfA submitted to Regional Office, yet to be processed
- No response to FIR/SRR review

SEARCH AND RESCUE REGIONS (SRR) IN THE ASIA/PACIFIC REGIONS – WORKING DRAFT

EXPLANATION OF THE TABLE

- Column 1. Name of the SRR.
- Column 2. Description of SRR lateral limits.
- Column 3. Remarks — additional information, if necessary.

Name of SRR	Lateral limits coordinates	Remarks
1	2	3
Australia SRR	140000S 1611500E 174000S 1630000E 450000S 1630000E 900000S 0000000W/E (South Pole) 060000S 0750000E 020000S 0780000E 020000S 0920000E 120000S 1070000E 120000S 1232000E 092000S 1265000E 070000S 1350000E 095000S 1394000E 095000S 1410000E 093700S 1410200E 091542S 1420330E 091248S 1420624E 091154S 1420836E 091200S 1421018E 091124S 1421254E 091136S 1421406E 091354S 1421624E 091606S 1422042E 092206S 1422942E 092148S 1423130E 092236S 1423330E 092124S 1423530E 092024S 1424142E 092018S 1424354E 091924S 1424818E 090800S 1435230E 092400S 1441400E 095634S 1440521E 100515S 1435852E 100850S 1435711E	

	101751S 1435445E 102244S 1435525E 102638S 1435424E 103110S 1435441E 103457S 1435536E 104114S 1435810E 104641S 1435959E 105205S 1440046E 105900S 1440200E 110224S 1440233E 110637S 1440351E 111107S 1440421E 111413S 1440338E 111510S 1440307E 112935S 1440131E 113000S 1440136E 114330S 1440420E 120000S 1440000E 120000S 1550000E 140000S 1550000E 140000S 1611500E.	
--	---	--

Comments:

- a. SRR - PfA 21/22-ATM approved by HQ. PfA circulated to States on 23 Nov 2021. Awaiting submission to Council.

Name of SRR	Lateral limits coordinates	Remarks
1	2	3
Bali SRR	No information on record, not all coordinates available on ICAO GIS.	

Comments:

- a. Ujung Pandang FIR and Bali SRR data not aligned. SSR – PfA not submitted to ICAO APAC Regional Office.

Name of SRR	Lateral limits coordinates	Remarks
1	2	3
Bangkok SRR	113900N 1025430E 100000N 1021500E 070000N 1030000E 064500N 1024000E 061500N 1021500E thence following the national boundary to 063000N 0993000E 071500N 0980000E 100000N 0963000E 095600N 0983300E thence following the national boundary to 113900N 1025430E.	

Comments:

- a. Pending confirmation of FIR data. SSR – PfA not submitted to ICAO APAC Regional Office.

Name of SRR	Lateral limits coordinates	Remarks
1	2	3
<p>Beijing SRR</p>	<p>A line joining 452317N 1152115E 431442N 1173100E 421500N 1180500E 395400N 1192100E 393000N 1195200E 381500N 1200000E 380700N 1193300E 372912N 1173000E 364000N 1152400E 361900N 1143000E 360400N 1134836E 343200N 1101500E 353200N 1101800E 372800N 1104400E 382200N 1103600E 384400N 1094100E 392600N 1083000E 401842N 1070012E 404300N 1055500E 414451N 1051345E thence following the national boundary of the People’s Republic of China to 452317N 1152115E.</p>	

Comments:

- a. SRR – PfA 21/18 ATM (Beijing), Awaiting submission to Council.

Name of SRR	Lateral limits coordinates	Remarks
1	2	3
Biak SRR	No information on record, not all coordinates available on ICAO GIS.	

Comments:

- a. Ujung Pandang FIR and Bali SRR data not aligned. SSR – PfA not submitted to ICAO APAC Regional Office.

Name of SRR	Lateral limits coordinates	Remarks
1	2	3
Bombay SRR	<p>A line joining 250001N 0790455E 231049N 0800334E 222850N 0802116E 213009N 0803537E 184300N 0820000E 194300N 0771000E 191900N 0760000E 180000N 0760000E 164000N 0760000E 163600N 0752800E 162600N 0741100E 162200N 0733400E 161700N 0730000E 150000N 0733500E 150000N 0720000E 073000N 0720000E 073000N 0700000E 030500N 0700000E 000000N 0680000E 060000S 0680000E 060000S 0600000E 194800N 0600000E 233000N 0643000E then eastwards along 233000N parallel until it meets the Indian coastline at 233000N 682300E then northwards along the coastline to 234000N 0681000E then along the common border between India and Pakistan to 250000N 0705500E 250001N 0790455E.</p>	

Comments:

- a. SSR – PfA not submitted to ICAO APAC Regional Office.

Name of SRR	Lateral limits coordinates	Remarks
1	2	3
Calcutta SRR	A line joining 210000N 0920000E 140000N 0920000E 154200N 0855400E 184100N 0824900E 184300N 0820000E 213009N 0803537E 222850N 0802116E 231049N 0800334E 250001N 0790455E 250801N 0785955E 253601N 0793554E 251701N 0794954E 262401N 0801154E 264531N 0805340E 270922N 0813300E 273424N 0824443E thence following the national boundary to 213800N 0891000E a line joining 213800N 0891000E 210000N 0920000E.	

Comments:

- a. Pending confirmation of FIR data. SSR – PfA not submitted to ICAO APAC Regional Office.

Name of SRR	Lateral limits coordinates	Remarks
1	2	3
Colombo SRR	A line joining 060000N 0920000E 020000S 0920000E 020000S 0780000E 060000N 0780000E 100000N 0800000E 100000N 0820000E 060000N 0920000E.	

Comments:

- a. Draft SRR PfA forwarded to Sri Lanka. SSR – PfA not submitted to ICAO APAC Regional Office.

Name of SRR	Lateral limits coordinates	Remarks
1	2	3
Delhi SRR	A line joining 273424N 0824443E 270922N 0813300E 264531N 0805340E 262401N 0801154E 251701N 0794954E 253601N 0793554E 250801N 0785955E 250001N 0790455E 250000N 0705500E thence following the national boundary to 273424N 0824443E.	

Comments:

- a. Draft SRR PfA forwarded to India. SSR – PfA not submitted to ICAO APAC Regional Office.

Name of SRR	Lateral limits coordinates	Remarks
1	2	3
Dhaka SRR	A straight line joining N 20 22 46.1, E 092 24 09.1; to N 21 26 43.6, E 089 10 59.2 ; then to N 21 38 40.2, E 089 09 20.0; Thence following the national boundary line to N 20 22 46.1, E 092 24 09.1	

Comments:

- a. Pending confirmation of FIR data. SRR PFA submitted to ICAO APRO and subject to further coordination.

Name of SRR	Lateral limits coordinates	Remarks
1	2	3
Guangzhou SRR	<p>A line joining 290200N 1143400E 264200N 1135700E 260300N 1140700E 254600N 1145224E 250530N 1152500E 244024N 1152430E 242200N 1164200E 234200N 1171100E 233000N 1173000E 230000N 1173000E 222430N 1154000E 222430N 1143000E thence following the Hong Kong Special Administrative Region boundary to 222130N 1135200E a line joining 222130N 1135200E 193000N 1113000E 203000N 1113000E 203000N 1080300E 211235N 1081231E thence following the national boundary of the People’s Republic of China to 231145N 1053230E a line joining 231145N 1053230E 243900N 1054800E 254200N 1073900E 263500N 1091900E 284700N 1092300E 293100N 1092400E 292300N 1130712E</p>	

	290200N 1143400E.	
--	-------------------	--

Comments:

- a. SRR PfA submitted to ICAO APRO and subject to further coordination. Pending confirmation of FIR data.

Name of SRR	Lateral limits coordinates	Remarks
1	2	3
Ha Noi SRR	211235N 1081231E 203000N 1080300E 195733N 1075547E 191604N 1071123E 182028N 1074053E 172510N 1084437E 171300N 1080000E 170000N 1071800E 170000N 1063258E thence following national boundary to 212812.5N 1080604.3E 212801.7N 1080601.6E 212750.1N 1080557.7E 212739.5N 1080551.5E 212728.2N 1080539.9E 212723.1N 1080538.8E 212708.2N 1080543.7E 211632N 1080805E 211235N 1081231E.	

Comments:

- a. Pending confirmation of FIR data. SSR – PfA not submitted to ICAO APAC Regional Office.

Name of SRR	Lateral limits coordinates	Remarks
1	2	3
Ho Chi Minh SRR	143000N 1140000E 103000N 1140000E 070000N 1080000E 070000N 1030000E 090000N 1024000E 102200N 1034400E thence following national boundary to 170000N 1063258E 171300N 1080000E 170000N 1071800E 172510N 1084437E 143000N 1120000E 143000N 1140000E.	

Comments:

- a. Pending confirmation of FIR data. SSR – PfA not submitted to ICAO APAC Regional Office.

Name of SRR	Lateral limits coordinates	Remarks
1	2	3
Hong Kong SRR	A line joining 230000N 1173000E 210000N 1173000E 164000N 1140000E 193000N 1113000E 222130N 1135200E thence following the Hong Kong Special Administrative Region boundary to 222430N 1143000E a line joining 222430N 1143000E 222430N 1154000E 230000N 1173000E.	

Comments:

- a. SRR PfA submitted. Pending confirmation of FIR data. SRR PfA submitted to ICAO APRO and subject to further coordination.

Name of SRR	Lateral limits coordinates	Remarks
1	2	3
Honiara SRR	103000S 1664500E 114800S 1665200E 140000S 1630000E 140000S 1550000E 071900S 1550000E 065533S 1553808E 065533S 1554137E 065050S 1555523E 064104S 1560136E 063950S 1560223E 063300S 1560209E 045000S 1590000E 045000S 1600000E 103000S 1664500E.	

Comments:

- a. Draft SRR PfA forwarded to Solomon Islands. SSR – PfA not submitted to ICAO APAC Regional Office.

Name of SRR	Lateral limits coordinates	Remarks
1	2	3
Honolulu SRR	A line joining 524300N 135000W 510000N 1334500W 482000N 1280000W 450000N 1263000W 405900N 1265400W 405000N 1270000W 373023N 1270000W 362743N 1265600W 353000N 1255000W 360000N 1241200W 343000N 1231500W 304500N 1205000W 300000N 1200000W 033000N 1200000W 033000N 1450000W 050000S 1550000W 050000S 1800000W/E 033000N 1800000W/E 033000N 1600000E 000000N/S 1600000E 000000N/S 1410000E 033000N 1410000E 033000N 1330000E 070000N 1300000E 210000N 1300000E 210000N 1550000E 270000N 1550000E 270000N 1650000E 430000N 1650000E 454200N 1625500E 500800N 1763400W 512400N 1674900W 533000N 1600000W 560000N 1530000W	

	564542N 1514500W 532203N 1370000W 524300N 1350000W.	
--	---	--

Comments:

- a. Draft SRR PfA forwarded to United States. SSR – PfA not submitted to ICAO APAC Regional Office.

Name of SRR	Lateral limits coordinates	Remarks
1	2	3
<p>Jakarta SRR</p>	<p>011300N 1133500E 030000S 1102300E 082000S 1102300E 120000S 1143000E 120000S 1070000E 020000S 0920000E 060000N 0920000E 060000N 0973000E 013900N 1021000E thence following the arc of a circle radius 100NM center at 012136N 1034825E anticlockwise to 000000N/S 1044600E 000000N/S 1051000E 005000S 1060000E 000000N/S 1080000E 000000N/S 1090000E 001500N 1090000E thence along Kalimantan west coast to the national boundary with Malaysia until 011300N 1133500E.</p>	

Comments:

- a. Draft SRR PfA forwarded to Indonesia. SSR – PfA not submitted to ICAO APAC Regional Office.

Name of SRR	Lateral limits coordinates	Remarks
1	2	3
Kabul SRR	371105N 0674723E thence following the national boundary to 371105N 0674723E.	

Comments:

- a. Draft SRR PfA forwarded to Afghanistan. SSR – PfA not submitted to ICAO APAC Regional Office.

Name of SRR	Lateral limits coordinates	Remarks
1	2	3
Juneau SRR	A line joining 544009N 1700000E 513000N 1700000E 510500N 1734400E 500800N 1763400W 454200N 1625500E 500500N 1590000E 540000N 1690000E 544009N 1700000E.	

Comments:

- a. Draft SRR PfA forwarded to United States. SSR – PfA not submitted to ICAO APAC Regional Office.

Name of SRR	Lateral limits coordinates	Remarks
1	2	3
Karachi SRR	300000N 0733500E thence following the national boundary to 234000N 0681000E 233000N 0682300E 233000N 0643000E 233000N 0612000E 244000N 0612000E 251040N 0613550E thence following the national boundary to 300000N 0661900E 300000N 0733500E.	

Comments:

- a. Draft SRR PfA forwarded to Pakistan. SSR – PfA not submitted to ICAO APAC Regional Office.

Name of SRR	Lateral limits coordinates	Remarks
1	2	3
Kathmandu SRR	302645N 0813744E thence following the national boundary to 302645N 0813744E.	

Comments:

- a. PfA APAC-I 21/03 circulated to ICAO HQ. Approved and incorporated into the ANP.

Name of SRR	Lateral limits coordinates	Remarks
1	2	3
Kota Kinabalu SRR	082500N 1163000E 073000N 1173000E 040000N 1200000E 040000N 1180000E thence along the national boundary of Malaysia and Indonesia to 010000N 1085400E 010000N 1083000E 021500N 1083000E 082500N 1163000E.	

Comments:

- a. SRR – PfA 21/17 ATM (Kota Kinabalu), Awaiting submission to Council.

Name of SRR	Lateral limits coordinates	Remarks
1	2	3
Kuala Lumpur SRR	064500N 1024000E 045000N 1034400E 034000N 1034000E 023600N 1044500E 012000N 1042000E thence along 012000N to the national boundary of Malaysia/Singapore; thence along the national boundary of Malaysia/Singapore to 011700N 1033600E 011300N 1033000E 013900N 1021000E 060000N 0973000E 060000N 0942500E 100000N 0942500E 100000N 0963000E 071500N 0980000E 063000N 0993000E thence along the national boundary of Malaysia/Thailand to 061500N 1021500E 064500N 1024000E.	

Comments:

- a. SRR - PfA 21/16 ATM (Kuala Lumpur), Awaiting submission to Council.

Name of SRR	Lateral limits coordinates	Remarks
1	2	3
Kunming SRR	A line joining 315400N 1093100E 293100N 1092400E 284700N 1092300E 263500N 1091900E 254200N 1073900E 243900N 1054800E 231145N 1053230E thence following the national boundary of the People’s Republic of China to 302630N 0813730E; a line joining 302630N 0813730E 321806N 0840318E 362500N 0872300E 360200N 0890100E 325200N 0915500E 320600N 0970000E 314900N 0983500E 325500N 1014200E 333500N 1035300E 322700N 1054900E 321400N 1072400E 315400N 1093100E.	

Comments:

- a. SRR PfA submitted to ICAO APRO and subject to further coordination.

Name of SRR	Lateral limits coordinates	Remarks
1	2	3
Lahore SRR	A line joining 300000N 0733500E 300000N 0661900E thence following the national boundary to 300000N 0733500E.	

Comments:

- a. SRR PfA submitted to ICAO APRO and subject to further coordination.

Name of SRR	Lateral limits coordinates	Remarks
1	2	3
Lanzhou SRR	A line joining 414451N 1051345E 404300N 1055500E 401842N 1070012E 392600N 1083000E 384400N 1094100E 382200N 1103600E 372800N 1104400E 353200N 1101800E 343200N 1101500E 340500N 1102900E 333200N 1105200E 315400N 1093100E 321400N 1072400E 322700N 1054900E 333500N 1035300E 325500N 1014200E 314900N 0983500E 320600N 0970000E 325200N 0915500E 360200N 0890100E 362500N 0872300E 382100N 0901300E 414800N 0950800E 425500N 0962014E thence following the national boundary of the People’s Republic of China to 414451N 1051345E.	

Comments:

- a. SRR PfA – 21/19 ATM (Lanzhou), Awaiting submission to Council

Name of SRR	Lateral limits coordinates	Remarks
1	2	3
Madras SRR	A line joining 133000N 0942500E 060000N 0942500E 060000N 0920000E 100000N 0820000E 100000N 0800000E 060000N 0780000E 060000N 0740000E 073000N 0740000E 073000N 0720000E 150000N 0720000E 150000N 0733500E 161700N 0730000E 162200N 0733400E 162600N 0741100E 163600N 0752800E 164000N 0760000E 180000N 0760000E 191900N 0760000E 194300N 0771000E 184300N 0820000E 184100N 0824900E 154200N 0855400E 140000N 0920000E 133000N 0942500E.	

Comments:

- a. Draft SRR PfA forwarded to India. SSR – PfA not submitted to ICAO APAC Regional Office.

Name of SRR	Lateral limits coordinates	Remarks
1	2	3
Male SRR	A line joining 060000N 0780000E 020000S 0780000E 060000S 0750000E 060000S 0680000E 000000N/S 0680000E 030500N 0700000E 073000N 0700000E 073000N 0720000E 073000N 0740000E 060000N 0740000E 060000N 0780000E.	

Comments:

- a. PfA APAC-I 21/04 circulated to ICAO HQ. Approved and incorporated into the ANP.

Name of SRR	Lateral limits coordinates	Remarks
1	2	3
Manila SRR	A line joining 210000N 130000E 070000N 130000E 040000N 1323200E 040000N 120000E 073000N 1173000E 082500N 1163000E 103000N 114000E 164000N 114000E 210000N 1173000E 210000N 130000E.	

Comments:

- a. SRR - PfA 21/11-ATM approved by HQ. Awaiting submission to Council.

Name of SRR	Lateral limits coordinates	Remarks
1	2	3
Nadi SRR	A line joining 033000N 180000E 050000S 180000W 050000S 171000W 153245.1S 1754031.2W 250000S 180000E 250000S 171250E 280000S 168000E 300000S 163000E 174000S 163000E 140000S 161150E 140000S 163000E 100000S 170000E 033000N 170000E 033000N 180000E.	

Comments:

- a. Draft SRR PfA forwarded to Fiji. SSR – PfA not submitted to ICAO APAC Regional Office.

Name of SRR	Lateral limits coordinates	Remarks
1	2	3
Nauru SRR	033000N 1700000E 100000S 1700000E 114800S 1665200E 103000S 1664500E 045000S 1600000E 033000N 1600000E 033000N 1700000E.	

Comments:

- a. Pfa APAC-1 21/10 circulated to ICAO HQ. Approved and incorporated into the ANP.

Name of SRR	Lateral limits coordinates	Remarks
1	2	3
New Zealand SRR	300000S 1310000W 900000S 0000000E 300000S 1630000E 280000S 1680000E 250000S 1712500E 250000S 1800000E 153245.1S 1754031.2W 050000S 1710000W 050000S 1570000W 300000S 1570000W 300000S 1310000W.	

Comments:

- a. Submitted PfA subject to further coordination.

Name of SRR	Lateral limits coordinates	Remarks
1	2	3
Phnom Penh SRR	102200N 1034400E 090000N 1024000E 070000N 1030000E 100000N 1021500E 113900N 1025430E thence following the national boundary to 102200N 1034400E.	

Comments:

- a. Pending confirmation of FIR data.

Name of SRR	Lateral limits coordinates	Remarks
1	2	3
Port Moresby SRR	000000N/S 1600000E 045000S 1600000E 045000S 1590000E 063300S 1560209E 063950S 1560223E 064104S 1560136E 065050S 1555523E 065533S 1554137E 065533S 1553808E 071900S 1550000E 120000S 1550000E 120000S 1440000E 114330S 1440420E 113000S 1440136E 112935S 1440131E 111510S 1440307E 111413S 1440338E 111107S 1440421E 110637S 1440351E 110224S 1440233E 105900S 1440200E 105205S 1440046E 104641S 1435959E 104114S 1435810E 103457S 1435536E 103110S 1435441E 102638S 1435424E 102244S 1435525E 101751S 1435445E 100850S 1435711E 100515S 1435852E 095634S 1440521E 092400S 1441400E 090800S 1435230E 091924S 1424818E 092018S 1424354E	

	092024S 1424142E 092124S 1423530E 092236S 1423330E 092148S 1423130E 092206S 1422942E 091606S 1422042E 091354S 1421624E 091136S 1421406E 091124S 1421254E 091200S 1421018E 091154S 1420836E 091248S 1420624E 091542S 1420330E 093700S 1410200E 065334S 1410106E thence following the Fly River to 061914S 1410000E 000000N/S 1410000E 000000N/S 1600000E.	
--	--	--

Comments:

- a. PfA APAC-I 21/06 circulated to ICAO HQ. Approved and incorporated into the ANP.

Name of SRR	Lateral limits coordinates	Remarks
1	2	3
Pyongyang SRR	403000N 1355600E 383800N 1333900E 383800N 1282200E thence following the national boundary to 380000N 1245100E 38 0000N 1240000E 395100N 1240000E thence following the national boundary to 422500N 1303600E 420900N 1305300E 414000N 1313100E 403000N 1355600E.	

Comments:

- a. Pending confirmation of FIR data and SRR PfA submitted to ICAO APAC office pending processing.

Name of SRR	Lateral limits coordinates	Remarks
1	2	3
Sanya SRR	A line joining 203000N 1113000E 193000N 1113000E 164000N 1140000E 143000N 1140000E 143000N 1120000E 182028N 1074053E 191604N 1071123E 195733N 1075547E 203000N 1080300E 203000N 1113000E.	

Comments:

- a. SRR PfA 21/20 ATM (Sanya), Awaiting submission to Council.

Name of SRR	Lateral limits coordinates	Remarks
1	2	3
Shanghai SRR	A line joining 380000N 1240000E 323000N 1240000E 323000N 1265000E 290000N 1254900E 290000N 1240000E 262908N 1212656E 250000N 1200000E 230000N 1173000E 233000N 1173000E 234200N 1171100E 242200N 1164200E 244024N 1152430E 250530N 1152500E 254600N 1145224E 260300N 1140700E 264200N 1135700E 290200N 1143400E 300500N 1155600E 325430N 1154848E 343100N 1155430E 351448N 1152700E 364000N 1152400E 372912N 1173000E 380700N 1193300E 381500N 1200000E 381500N 1230000E 380000N 1240000E.	

Comments:

- a. SRR PfA submitted to Regional Office and subject to further coordination. Pending confirmation of FIR data.

Name of SRR	Lateral limits coordinates	Remarks
1	2	3
Shenyang SRR	394941N 1241006E 380000N 1240000E 381500N 1230000E 381500N 1200000E 393000N 1195200E 395400N 1192100E 421500N 1180500E 431442N 1173100E 452317N 1152115E thence following the national boundary of the People’s Republic of China to 394941N 1241006E.	

Comments:

- a. SRR PfA submitted to Regional Office and subject to further coordination. Pending confirmation of FIR data.

Name of SRR	Lateral limits coordinates	Remarks
1	2	3
Singapore SRR	082500N 1163000E 021500N 1083000E 010000N 1083000E 010000N 1085400E thence along Kalimantan west coast to 001500N 1090000E to 000000N/S 1090000E 000000N/S 1080000E 005000S 1060000E 000000N/S 1051000E 000000N/S 1044600E thence following the arc of a circle radius 100NM centred on Singapore Island 012136N 1034825E clockwise to 013900N 1021000E 011300N 1033000E 011700N 1033600E thence east along the national boundary of Singapore/Malaysia, thence along 012000N to 012000N 1042000E 023600N 1044500E 034000N 1034000E 045000N 1034400E 064500N 1024000E 070000N 1030000E 070000N 1080000E 103000N 1140000E 082500N 1163000E.	

Comments:

- a. SRR - PfA 21/11-ATM approved by HQ. Awaiting submission to Council.

Name of SRR	Lateral limits coordinates	Remarks
1	2	3
Taegu Incheon SRR	383800N 1333900E 380000N 1330000E 373000N 1330000E 344000N 1291000E 323000N 1273000E 323000N 1265000E 300000N 1252500E 300000N 1240000E 380000N 1240000E 380000N 1245100E following the national boundary from 380000N 1245100E to 383800N 1282200E a line joining 383800N 1282200E 383800N 1333900E	

Comments:

- a. Pending confirmation of FIR data and submitted PfA subject to further coordination.

Name of SRR	Lateral limits coordinates	Remarks
1	2	3
Tahiti SRR	033000N 120000W 300000S 120000W 300000S 157000W 050000S 157000W 050000S 155000W 033000N 145000W 033000N 120000W.	

Comments:

- a. Pending confirmation of FIR data.

Name of SRR	Lateral limits coordinates	Remarks
1	2	3
Taibei SRR	A line joining 290000N 1240000E 290000N 1254900E 260000N 1250000E 253000N 1240000E 233000N 1240000E 210000N 1213000E 210000N 1173000E 230000N 1173000E 250000N 1200000E 262908N 1212656E 290000N 1240000E	

Comments:

- a. SRR PfA submitted to Regional Office and subject to further coordination. Pending confirmation of FIR data.

Name of SRR	Lateral limits coordinates	Remarks
1	2	3
Tokyo SRR	500500N 1590000E 454200N 1625500E 430000N 1650000E 270000N 1650000E 270000N 1550000E 210000N 1550000E 210000N 1213000E 233000N 1240000E 300000N 1240000E 300000N 1252500E 323000N 1265000E 323000N 1273000E 344000N 1291000E 373000N 1330000E 380000N 1330000E 383800N 1333900E 403000N 1355600E 454500N 1400000E 454500N 1420000E 443000N 1454000E then between Hokkaido and Kunashiri Islands from 443000N 1454000E to 432000N 1455000E 430000N 1465000E 450000N 1500000E 500500N 1590000E.	

Comments:

- a. Pending confirmation of FIR data. SSR – PfA not submitted to ICAO APAC Regional Office.

Name of SRR	Lateral limits coordinates	Remarks
1	2	3
Ulaanbaatar SRR	495044.4N 1164249.3E thence following the national boundary to 495044.4N 1164249.3E.	

Comments:

- a. PfA APAC-I 21/09 circulated to ICAO HQ. Approved incorporated into the ANP.

Name of SRR	Lateral limits coordinates	Remarks
1	2	3
Urumqi SRR	A line joining 425500N 0962014E 414800N 0950800E 382100N 0901300E 362500N 0872300E 321806N 0840318E 302630N 0813730E thence following the national boundary of the People’s Republic of China to N425500N 0962014E.	

Comments:

- a. SRR PfA submitted to Regional Office and subject to further coordination. Pending confirmation of FIR data.

Name of SRR	Lateral limits coordinates	Remarks
1	2	3
Vientiane SRR	170000N 1063258E thence following the national boundary to 170000N 1063258E.	

Comments:

- a. PfA APAC-I 21/05 circulated to ICAO HQ. Approved incorporated into the ANP.

Name of SRR	Lateral limits coordinates	Remarks
1	2	3
Wuhan SRR	A line joining 364000N 1152400E 351448N 1152700E 343100N 1155430E 325430N 1154848E 300500N 1155600E 290200N 1143400E 292300N 1130712E 293100N 1092400E 315400N 1093100E 333200N 1105200E 340500N 1102900E 343200N 1101500E 360400N 1134836E 361900N 1143000E 364000N 1152400E.	

Comments:

- a. SRR –21/21 ATM (Wuhan), Awaiting submission to Council.

Name of SRR	Lateral limits coordinates	Remarks
1	2	3
Yangon SRR	A line joining 100000N 0983000E 100000N 0942500E 133000N 0942500E 140000N 0920000E 210000N 0920000E 215700N 0923200E thence following the national boundary to 100000N 0983000E.	

Comments:

- a. Pending confirmation of FIR data. SSR – PfA not submitted to ICAO APAC Regional Office.

AERONAUTICAL SEARCH AND RESCUE REGIONS (SRR) OF THE ASIA AND PACIFIC REGIONS HISTORY DATA RECORDS

State	SRR	Lastest RAN Meeting or PfA Number	Lateral limits coordinates in record	Remarks
Afghanistan	Kabul SRR	No record		SSR – PfA not submitted to ICAO APAC Regional Office.
Australia	Australia SRR	PfA 21/22-ATM	<p><i>Add, Australia SRR</i> boundary dimensions as follows:</p> <p>14000S 1611500E 174000S 1630000E 450000S 1630000E 900000S 0000000W/E (South Pole) 060000S 0750000E 020000S 0780000E 020000S 0920000E 120000S 1070000E 120000S 1232000E 092000S 1265000E 070000S 1350000E 095000S 1394000E 095000S 1410000E 093700S 1410200E 091542S 1420330E 091248S 1420624E 091154S 1420836E 091200S 1421018E 091124S 1421254E 091136S 1421406E 091354S 1421624E 091606S 1422042E 092206S 1422942E 092148S 1423130E</p>	SRR - PfA 21/22-ATM approved by HQ. PfA circulated to States on 23 Nov 2021. Awaiting submission to Council

			<p>092236S 1423330E 092124S 1423530E 092024S 1424142E 092018S 1424354E 091924S 1424818E 090800S 1435230E 092400S 1441400E 095634S 1440521E 100515S 1435852E 100850S 1435711E 101751S 1435445E 102244S 1435525E 102638S 1435424E 103110S 1435441E 103457S 1435536E 104114S 1435810E 104641S 1435959E 105205S 1440046E 105900S 1440200E 110224S 1440233E 110637S 1440351E 111107S 1440421E 111413S 1440338E 111510S 1440307E 112935S 1440131E 113000S 1440136E 114330S 1440420E 120000S 1440000E 120000S 1550000E 140000S 1550000E 140000S 1611500E.</p> <p>Vertical limits: SFC to UNL</p>	
Bangladesh	Dhaka SRR	RAN/3	Amend the southern boundary of Dhaka SRR as follows:	SRR PfA submitted to

AERONAUTICAL SEARCH AND RESCUE REGIONS (SRR) OF THE ASIA AND PACIFIC REGIONS HISTORY DATA RECORDS

			2138N 08910E to 2000N 09200E to 2100N 09200E to 2157N 09232E.	ICAO APRO and subject to further coordination.
Cambodia	Phnom Penh SRR	No record		SRR PfA submitted to ICAO APRO and subject to further coordination.
China	Beijing SRR	RAN/2	Amend the boundaries of existing SRRs over China to the accord with the amended FIR boundaries in recommendation 2.1/6 c). Amend Beijing FIR as follows: From N3815 E12000, N3930 E11952, N3954 E11921, N4315 E11731, a point on Sino-Mongolian border, N452317 E1152112, along Sino-Mongolian border line, N414451 E1051345, N4043 E10555, N4020 E10701, N3906 E10759, N3844 E10941, N3822 E11036, N3728 E11044, N3532 E11018, N3432 E11015, N3405 E11029, N3454 E11247, N3606 E11421, N3621 E11455, N3632 E11518, N3729 E11730, N3815 E12000.	SRR – PfA 21/18 ATM (Beijing), Awaiting submission to Council
China	Guangzhou SRR	RAN/2	Amend the boundaries of existing SRRs over China to the accord with the amended FIR boundaries in recommendation 2.1/6 j). Amend the boundaries of Guangzhou FIR as follows: From N2310 E11730, N2330 E11730, N2342 E11711, N2422 E11642, N2446 E11501, N2507 E11418,	SRR PfA submitted to ICAO APRO and subject to further coordination.

			N2603 E11407, N2642 E11357, N2902 E11434, N2923 E11306, N2931 E10924, N2753 E10919, N2641 E10912, N2525 E10753, N2439 E10548, a point over sino-VietNameese border N231145 E1053230, along Sino-VietNameese border line, N213252 E10800, N1713 E10800, N1740 E10940, N1930 E11130, N2125 E11130, along the territorial limits of China to N2310 E11730.	
China	Hong Kong SRR	No record		SRR PfA submitted to ICAO APRO and subject to further coordination.
China	Kunming SRR	RAN/2	Amend the boundaries of existing SRRs over China to the accord with the amended FIR boundaries in recommendation 2.1/6 g). Amend the boundaries of Kunming FIR as follows: From a point on Sino-Nepalese border, N302630 E813730, alog Sino-Nepalese, Sino-Sikkim, Sino-Bhutan, Sino-Indian, Sino-Burmese, Sino-Laos and Sino-VietNam border lines, N231145 E1053230, N2439 E10548 N2525 E10753, N2641 E10912, N2753 E10919, N2931 E10924, N3017 E10929, N3154 E10931, N3214 E10724, N3227 E10549, N3255 E10142, N3149 E9835, N3200 E9700, N3252 E9155, N3236 E9000, N302630 E813730	SRR PfA submitted to ICAO APRO and subject to further coordination.
China	Lanzhou SRR	RAN/2	Amend the boundaries of existing SRRs over China to the accord with the amended FIR boundaries in recommendation 2.1/6 e). Amend the boundaries of Lanzhou FIR as follows:	SRR –21/19 ATM (Lanzhou), Awaiting submission to Council

AERONAUTICAL SEARCH AND RESCUE REGIONS (SRR) OF THE ASIA AND PACIFIC REGIONS HISTORY DATA RECORDS

			From a point on Sino-Mongolian border, N414451 E1053145 along Sino-Mongolia border line N4255 E962014, N4145 E9508, N3821 E9013, N3236 E9000, N3252 E9155, N3200 E9700, N3149 E9835, N3255 E10142, N3227 E10549, N3214 E10724, N3154 E10931, N3332 E11052, N3405 E11029, N3424 E11015, N3532 E11018, N3728 E11044, N3822 E11036, N3844 E10941, N3906 E10759, N4020 E10701, N4043 E10555, N414451 E1051345	
China	Shanghai SRR	RAN/2	Amend the boundaries of existing SRRs over China to the accord with the amended FIR boundaries in recommendation 2.1/6 h). From N3800 E12400, N3815 E12000, N3729 E11730, N3632 E11518, N3621 E11455, N3542 E11501, N3515 E11527, N3431 E11555, N3254 E11547, N3005 E11556, N2902 E11434, N2642 E11357, N2603 E11407, N2507 E11418, N2446 E11501, N2422 E11642, N2342 E11711, N2330 E11730, N2300 E11730, N2500 E12000, N2900 E12400, N3800 E12400.	SRR PfA submitted to ICAO APRO and subject to further coordination.
China	Shenyang SRR	RAN/2	Insert Shenyang SRR with boundary co-incident with new FIR proposed From N3800 E12400, N3815 E12000, N3729 E11730, N3632 E11518, N3621 E11455, N3542 E11501, N3515 E11527, N3431 E11555, N3254 E11547, N3005 E11556, N2902 E11434, N2642 E11357, N2603 E11407, N2507 E11418, N2446 E11501, N2422 E11642, N2342 E11711, N2330 E11730,	SRR PfA submitted to ICAO APRO and subject to further coordination.

			N2300 E11730, N2500 E12000, N2900 E12400, N3800 E12400.	
China	Taibei SRR	RAN/2	<p>Amend the boundaries of existing SRRs over China to the accord with the amended FIR boundaries in recommendation 2.1/6 i).</p> <p>Amend the boundaries of Taibei FIR as follow;</p> <p>From N2100 E12130, N2100 E11730, N2300 E11730, N2500 E12000, N2900 E12400, N2330 E12400, N2100 E12130.</p>	SRR PfA submitted to ICAO APRO and subject to further coordination.
China	Urumqi SRR	RAN/2	<p>Amend the boundaries of existing SRRs over China to the accord with the amended FIR boundaries in recommendation 2.1/6 f).</p> <p>Amend the boundaries of Urumqi FIR as follow:</p> <p>From a point on Sino-Mongolian border N4255 E962014, along Sino-Mongolia, Sino-Soviet, Sino-Afghanistan, Sino-Pakistani, Sino-Indian and Sino-Nepalese border lines, N302630 E813730, N3236 E9000, N3821 E9013, N4148 E95085, N4255 E962014.</p>	SRR PfA submitted to ICAO APRO and subject to further coordination.
China	Wuhan SRR	RAN/2	<p>Amend the boundaries of SRR Wuhan as follow;</p> <p>From N3621 E14455, N3606 E11421, N3454 E12247, N3405 E11029, N3332 E11052, N3154 E10931, N3017 E10929, N2931 E10924, N2923 E11306, N2902 E11434, N3005 E11556, N3254 E11547, N3431 E11555, N3515 E11527, N3542 E11501, N3621 E11455</p>	SRR –21/21 ATM (Wuhan), Awaiting submission to Council.

AERONAUTICAL SEARCH AND RESCUE REGIONS (SRR) OF THE ASIA AND PACIFIC REGIONS HISTORY DATA RECORDS

Democratic People's Republic of Korea	Pyongyang SRR	No records		SSR – PfA submitted on March 2023, pending processing
French Polynesia (France)	Tahiti SRR	RAN/1	Amend the western boundary of the SRR Tahiti as follows: 0500S 15500W, 0500S 17500W, 3000S 15700W, 03000S 14200W.	SSR PfA submitted to ICAO APRO and subject to further coordination.
India	Bombay SRR	Incomplete records RAN/1 RAN/2	Amend the southern and eastern boundaries of the SRR Bombay as follows: 1200N 0600E, 0500N 6000E, 500N 7120E, 0600N 7200E, 1500N 7200E, 1500N 7600E, 1800N 7600E, 1800N 8100E 1715N 8200E, 2500N 8200E. Amend the southern boundary of the SRR Bombay so as to include the airspace between: N0500 E6000, S0600 E6000, S0600 E6800, Equator E6800, N0500 E7120.	SSR – PfA not submitted to ICAO APAC Regional Office.
India	Calcutta SRR	RAN/3	Amend the Calcutta SRR boundary as follows: Beginning of the intersection of the E08340 meridian with the common border of India/Nepal, then East along the border of India/Nepal to the point on common border of Nepal/China/India, then along the border of India/China to the point on common border of India/China/Myanmar, then	SSR – PfA not submitted to ICAO APAC Regional Office.

			along the border of India/Myanmar to 2157N 09232E, then North along the common border of India/Bangladesh to 2138N 08910E to 2000N 09200E then South along 09200E meridian to 1400N 09200E to 1630N 08300E to 1715N 08200E to 2500N 08200E to 2500N 08300E to 2710N 08300E to 2715N 08340E, then along the 08340E meridian to its intersection with the common border of India/Nepal.	
India	Delhi SRR	No record		SSR – PfA not submitted to ICAO APAC Regional Office.
India	Madras SRR	Incomplete records RAN/3	Amend the eastern boundary of Madras SRR as follows: From 0600N 09425E to 1000N 09425E to 1000N 09600E to 1100N 09425E to 1330N 09425E. Amend the common boundary between Colombo and Madras SRRs as follows: From N0900 E07930 to N0700 E07830 to N0600 E07630	SSR – PfA not submitted to ICAO APAC Regional Office.
Indonesia	Bali SRR	No record		SSR – PfA not submitted to ICAO APAC Regional Office.
Indonesia	Biak SRR	RAN/1	Amend the eastern boundary of the Biak SRR as follows: 0330N 14100E, Equator 14100E, along the territorial border of Indonesia/Papua New Guinea to 0937S 14102E, 0950S 14100E, 0950S 14000E.	SSR – PfA not submitted to ICAO APAC Regional Office.
Indonesia	Jakarta SRR	RAN/1	Amend the boundaries of the Jakarta SRR as follows: 0600N 9200E, 0600N 9730E, 0200N 10215E,	SSR – PfA not submitted to

AERONAUTICAL SEARCH AND RESCUE REGIONS (SRR) OF THE ASIA AND PACIFIC REGIONS HISTORY DATA RECORDS

			then anti clockwise along a circle of 100NM radius centered at Singapore to 0000 10446E, 0000 10510E, 0050S 10600E, 0000 10800E, 0000 10900E, then north along the coast line of West Kalimantan to its intersection with the border line between Indonesia and Sarawak then along the Indonesian national boundaries until 0113N 11335E then to 0300S 11023E, 1200S 11023E, 1200S 10700E, 0200S 9200E to 0600N 9200E.	ICAO APAC Regional Office.
Indonesia	Ujung Pandang SRR	RAN/1	Rename the Makassar SRR as the Ujung Pandang SRR and amend the boundaries as follows: 0400N 12115E, 0400N 12910E, 0200S 12910E, 0520S 13500E, 0700S 13500E, 0920S 12650E, 0700S 12430E, 0700S 12100E, 0530S 11800E, 0400S 11800E then to 0400N 12115E.	SSR – PfA not submitted to ICAO APAC Regional Office.
Indonesia	Surabaya SRR	RAN/1	Amend the boundaries of the Surabaya SRR as follows: 0400N 12115E, 0400S 11800E, 0530S 11800E, 0700S 12100E, 0700S 12434E, 0920S 12715E, 1200S 12320E, 1200S 11023E, 0300S 11023E, 0113N 11335E then along the Indonesian national boundaries to 0400N 11800E then to 0400N 12115E	SSR – PfA not submitted to ICAO APAC Regional Office.
Fiji	Nadi SRR	RAN/1	Amend the Fiji SRR as the Nandi SRR and amend the lateral limits of the Nandi and Auckland SRRs as follows: Equator 16000E, Equator 17000E, 0330N 17000E, 0330N 18000E, 0500S 18000E, 0500S 15700W, 2000S 15700W, 2000S 16700E, 2500S 17500W, 2500S 17730E, 3100S 16940E, 3200S 16300E,	SSR – PfA not submitted to ICAO APAC Regional Office.

			1400S 16300E, 1400S 15500E, 1200S 15500E, along the amended eastern boundary of Port Moresby FIR to Equator 16000E.	
Japan	Tokyo SRR	RAN/1	Amend the northern boundary of the Tokyo SRR as follows: 4300N 14650E, 4500N 15000E, 5005N 15900E, 4300N 16500E. Amend the south western boundary of the Tokyo SRR to include the Okinawa SRR in its entirety.	SSR – PfA not submitted to ICAO APAC Regional Office.
Lao PDR	Vientiane SRR	No record		SRR - PfA 21/05-ATM approved by President of Council. SRR data incorporated into ANP.
Malaysia	Kota Kinabalu SRR	RAN/1	0825N 11630E, 0730N 11730E, 0400N 12000E, 0400N 11800E, then along the national boundary of East Malaysia and Indonesia to a point 0100N 10854E then 0100N 10830E, 0215N 10830E, 0825N 11630E.	SRR – PfA 21/17 ATM (Kota Kinabalu), Awaiting submission to Council.
Malaysia	Kuala Lumpur SRR	RAN/1	0645N 10240E, 0450N 10344E, 0340N 10340E, 0236N 10445E, 0120N 10420E, along 0120N to the Malaysia national boundary, then along the Malaysia nation boundary to 0117N 10336E, 0113N 10330E, 0200N 10215E, 0600N 9730E, 1000N 9425E, 1000N 9630E, 0715N 9800E, 0630N 9930E, then along the northern border of West Malaysia to 0615N 10215E, 0645N 10240E.	SRR - PfA 21/16 ATM (Kuala Lumpur), Awaiting submission to Council.
Maldives	Male SRR	RAN/2	Insert a new SRR Male with boundaries as follows:	SRR - PfA 21/04-ATM approved

AERONAUTICAL SEARCH AND RESCUE REGIONS (SRR) OF THE ASIA AND PACIFIC REGIONS HISTORY DATA RECORDS

			N0600 E7800, N0600 E7200, Equator E6800, S0600 E6800, S0600 E7500, S0200 E7800, N0600 E7800.	by President of Council. SRR data incorporated into ANP.
Mongolia	Ulaanbaatar SRR (former name Ulan Nator)	RAN/1	national borders of Mongolia	SRR PfA 21/09 ATM approved by President of the Council. Incorporated into ANP
Myanmar	Yangon SRR (Rangoon)	RAN/3	Amend the Yangon SRR boundary as follows: Straight lines joining 2100N 09200E, 2157N 09232E, thence North along the border of India/Myanmar to the point on common border of China/India/Myanmar, then along the border of China/Myanmar to the point of common border of China/India/Myanmar, then along border of China/Myanmar to the point of common border of China/Laos PDR/Myanmar, then along the border of Laos PDR/Myanmar to the point of common border of Laos PDR/Myanmar/Thailand, then along the border of Myanmar/Thailand to 1000N 09830E to 1000N 09600E to 1100N 09425E to 1330N 09425E to 1400N 09200E to 2100N 09200E.	SRR PfA submitted to ICAO APRO and subject to further coordination.
Nauru	Nauru SRR	No record		SRR - PfA 21/10-ATM approved by President of Council. SRR data incorporated into ANP.
Nepal	Kathmandu SRR	No record		SRR - PfA 21/03-ATM approved by President of

				Council. SRR data incorporated into ANP.
New Zealand	New Zealand SRR	No record		SRR PfA submitted to ICAO APRO and subject to further coordination.
Pakistan	Karachi SRR	No record		SSR – PfA not submitted to ICAO APAC Regional Office.
Pakistan	Lahore SRR	No record		SRR PfA submitted to ICAO APRO and subject to further coordination.
Papua New Guinea	Port Moresby SRR	RAN/1	Amend the boundaries of the Port Moresby SRR as follows: Equator 14100E, Equator 16000E, 0450S 16000E, 0450S 15900E along the Papua New Guinea territorial border to 0800S 15400E, 0800S 15500E, 1200S 15500E 1200S 14400E along the Papua New Guinea territorial border to 0937S 14102E then along the territorial border to Equator 14100E.	PfA 21/06-ATM approved by President of the Council. Incorporated into ANP.
Philippines	Manila SRR	RAN/1 RAN/2	Amend the western boundary of the Manila SRR as follows: 1030N 11400E, 1000N 11430E, 0730N 11520E, 0825N 11630E, 0730N 11730E, 0400N 12000E. Amend the common boundary between Manila and Singapore FIR as follows:	SRR - PfA 21/11-ATM approved by HQ. Awaiting submission to Council.

AERONAUTICAL SEARCH AND RESCUE REGIONS (SRR) OF THE ASIA AND PACIFIC REGIONS HISTORY DATA RECORDS

		RAN/3	<p>1030N 11400E to 0825N 11630E</p> <p>Amend the eastern boundary of Manila SRR as follows:</p> <p>2100N 13000E – 0700N 13000E – 0330N 13300E – 0330N 13200E – 0400N 13200E</p> <p>Amend the boundary between Manila SRR and Oakland Oceanic SRR as follows:</p> <p>2100N 13000E – 0700N 13000E – 0330N 13300E.</p>	
Republic of Korea	Incheon Taegu SRR	Incomplete records RAN/1	<p>Amend the Taegu SRR as the Osan SRR and amend the northern boundary as follows:</p> <p>3800N 12400E, 3800N 12405E, then along the armistice line to 3838N 12822E, then to 3838N 13339E.</p>	SRR PfA submitted to ICAO APAC and subject to further coordination.
Singapore	Singapore SRR	RAN/1	<p>Amend the boundaries of the Singapore SRR as follows:</p> <p>0645N 10240E, 0700N 10300E, 0700N 10800E, 1030N 11400E, 1000N 11430E, 0730N 11520E, 0215N 10830E, 0100N 10830E, 0100N 10854E, then along the national boundary of Indonesia to 0015N 10900E, then to Equator 10900E, Equator 10800E, 0050S 10600E, Equator 10510E, Equator 10446E, then around an arc 100 NM radius from Singapore International Airport to 0200N 10215E, 0113N 10330E, 0117N 10336E,</p>	SRR - PfA 21/11-ATM approved by HQ. Awaiting submission to Council.

			then along the Singapore national boundary to 0120N 10406E, 0120N 10420E, 0236N 10445E, 0340N 10340E, 0450N 10344E, 0645N 10240E.	
Solomon Islands	Honiara SRR	No record		SSR – PfA not submitted to ICAO APAC Regional Office.
Sri Lanka	Colombo SRR	Incomplete records RAN/1 RAN/2 RAN/3	Amend the western boundary of the Colombo SRR as follows: 1000N 8000E, 0600N 7800E, 0600N 7200E, 0500N 7120E, 0500N 6000E, 0600S 6000E, Amend the western boundary of the Colombo FIR as follows: N0600 E7800, S0200 E7800. Amend the common boundary between Colombo and Madras SRR as follows: From N0900 E07930 to N0700 E07830 to N0600 E07630.	SSR – PfA not submitted to ICAO APAC Regional Office.
Thailand	Bangkok SRR	No record		SSR – PfA not submitted to ICAO APAC Regional Office.
United States	Juneau SRR	RAN/1	Amend the boundaries of Juneau SRR as follows: North Pole, 6500N 16900W, 6000N 18000, 5400N 16900E, 5120N 16200E, 5005N 15900E,	SSR – PfA not submitted to ICAO APAC Regional Office.

AERONAUTICAL SEARCH AND RESCUE REGIONS (SRR) OF THE ASIA AND PACIFIC REGIONS HISTORY DATA RECORDS

			4300N 16500E, 4000N 16500E, 4000N 15000W, 5440N 14000W, 5440N 13600W, 5400N 13600W, thence along the northern boundary of the Vancouver FIR to 5413N 13457W, 543945N 1324100W to the coast at 5442.5N 13036.5W thence along the U.S./Canadian border to its intersection with 141W, thence westward along such coastline to its intersection with 58N, thence due west to the coastline, thence northerly to 141W, thence north to the point of origin.	
United States	Honolulu SRR	RAN/1	Amend the boundaries of Honolulu SRR as follows: 0330N 12000W, 0710N 12000W, 4000N 15000W, 4000N 16500E, 2700N 16500E, 2700N 16000E, Equator 16000E, Equator 17000E, 0330N 17000E, 0330N 18000, 0500S 18000, 0500S 15500W, 0330N 14500W, 0330N 12000W	SSR – PfA not submitted to ICAO APAC Regional Office.
Viet Nam	Hanoi SRR	RAN/1	Lateral limits delineated by the Kunming, Canton, Saigon and Vietniane FIRs.	SSR – PfA not submitted to ICAO APAC Regional Office.
Viet Nam	Ho Chi Minh SRR	No record		SSR – PfA not submitted to ICAO APAC Regional Office.

APAC ANP, VOLUME II

PART I – GENERAL PLANNING ASPECTS (GEN)

1. INTRODUCTION

1.1. The material in this part of Volume II of ANP is applicable to one or more parts of the ANP. It should be taken into consideration in the overall planning process for the Asia and Pacific Regions.

2. GENERAL REGIONAL REQUIREMENTS

2.1. To facilitate air navigation systems planning and implementation, homogenous ATM areas and/or major traffic flows/routing areas have been defined for the Regions. While these areas of routing do not encompass all movements in the Regions, they include the major routes. This includes the domestic flights in that particular area of routing.

Homogeneous ATM area

2.2. A homogeneous ATM area is an airspace with a common ATM interest, based on similar characteristics of traffic density, complexity, air navigation system infrastructure requirements or other specified considerations. In such an ATM area a common detailed plan will foster the implementation of interoperable ATM systems. Homogeneous ATM areas may extend over States, specific portions of States, or groupings of States. They may also extend over large oceanic and continental areas. They are considered areas of shared interest and requirements.

2.3. The method of identifying homogeneous ATM areas involves consideration of the varying degrees of complexity and diversity of the worldwide air navigation infrastructure. Based on these considerations, planning could best be achieved at the global level if it was organized based on ATM areas of common requirements and interest, taking into account traffic density and the level of sophistication required.

Major traffic flows/routing areas

2.4. A major traffic flow refers to a concentration of significant volumes of air traffic on the same or proximate flight trajectories. Major traffic flows may cross several homogeneous ATM areas with different characteristics.

2.5. A routing area encompasses one or more major traffic flows, defined for the purpose of developing a detailed plan for the implementation of ATM systems and procedures. A routing area may cross several homogeneous ATM areas with different characteristics. A routing area specifies common interests and requirements of underlying homogeneous areas, for which a detailed plan for the implementation of ATM systems and procedures either for airspace or aircraft will be specified.

2.6. The homogeneous ATM areas and major traffic flows/routing areas identified are given in [Table GEN II-1](#).

3. SPECIFIC REGIONAL REQUIREMENTS

3.1. States shall establish and maintain a National Air Navigation Plan (NANP) that supports implementation of the Global Air Navigation Plan and regional air navigation planning. The NANP shall be accessible to key stakeholders, including ICAO; however, specific details related to national security may be withheld from public release.

The NANP should detail the State's assessment of its requirements and the implementation process for applicable global and regional air navigation planning elements.

States shall report their implementation progress and status of the applicable global and regional air navigation planning elements at least once each year (preferably prior to 01 April) to support:

- global and regional plans (including the Seamless Air Traffic Management Plan and the Regional Air Navigation Plan Volume III); and
- specific plans for aerodromes, Aeronautical Information Management (AIM), Air Traffic Flow Management (ATFM), Air Traffic Management (ATM) contingency and Search and Rescue (SAR).

Note: a 'robust' status plan that is not subject to consideration as an APANPIRG Deficiency is one that is evaluated as achieving 90% or more implementation of the planning elements.

The NANP should include the following Basic Planning Elements:

Background – a brief introduction aimed at high level decision-makers that describes the need for the plan with benefits and costs, including the necessity for global and regional harmonization and interoperability:

- a) general (not necessarily quantitative) description of the Plan's benefits;
- b) general description of the costs*; and
- c) details of how the State Plan connects to the global and regional planning hierarchy.

**Note 1: this is a matter for the State to determine, and could be in terms of quantitative, qualitative, cost of implementation or cost of not implementing.*

**Note 2: ICAO do not require details of costs from States, as this is for the State's benefit.*

Stakeholder Consultation – high level descriptions and statements:

- a) of the process used to consult with stakeholders, including the military; and
- b) from key stakeholders (such as Heads of CAAs, ANSPs, military organisations, etc.) endorsing the State Plan.

Analysis – Information on the State's analysis of:

- a) all applicable ASBU and regional elements deemed to be applicable, including a statement of the State's priorities* for implementation; and
- b) elements that are deemed to be not applicable, and how these were determined.

**Note: this assessment should be guided by the priorities determined by APANPIRG*

Planning – descriptions of:

- a) the implementation process, such as how the different stakeholders will work together, design systems and provide feedback on implementation; and
- b) each applicable global and regional element's implementation managers (those responsible for execution of the implementation) and timelines.

Progress – details in the State Plan as to the progress of implementation against the planning timelines.

Note 1: this also provides an indication that the Plan is a 'living document' subject to periodic review and update.

Note 2: ICAO would not normally be interested in the details of the Plan (except where specific need is identified at APANPIRG Contributory bodies). The NANP will need to address the BPEs at a high level and States should send detailed information only when requested by ICAO.

3.2. The homogeneous ATM areas and major traffic flows/routing areas identified in the Asia and Pacific Regions are shown in [Chart GEN II APAC-1](#).
