

Benefits of Digital NOTAM

Present

Temporary information (NOTAM)

```

RJTT
! 1436-20 FROM 20/02/19 20:29 TO 20/02/17 21:00
E) SALS FOR RWY 14R-PARTIAL U/S DUE TO TROUBLE
RWY/AVEL APCH LGT LEV 470M
1417-20 FROM 20/02/19 23:00 TO 20/02/29 05:00
...

```

Difficult to locate from latitude/longitude

Unable to reference directly



Permanent information (AIP)

RJFF - FUKUOKA

RJFF AD 2.1 AERODROME LOCATION INDICATOR AND NAME

RJFF AD 2.2 AERODROME GEOGRAPHICAL AND ADMINISTRATIVE DATA

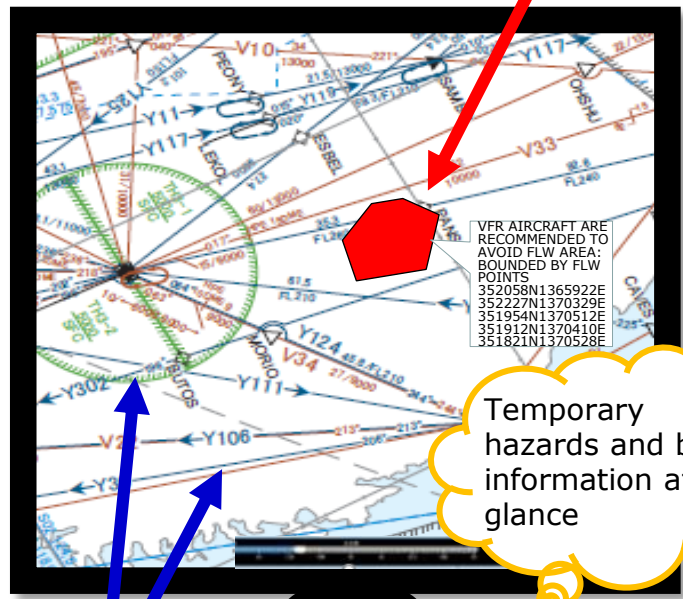
1. AIP coordinates and site #IAD 333000N130700E 19111.58m from RWY 16 Thr
2. Direction and distance from IOTY 1.5km E Osaka railway station
3. Elevation Reference temperature RJFF 14°C (50.8°F)
4. Depot unslatation at AD ELEV 107FT

Difficult to know if there's a temporary change



Future (Digital data)

- Integrated process of temporary information and permanent information
 - Overlay on the map
 - Filter by time-frame



Temporary information (Digital NOTAM)

Temporary hazards and basic information at a glance

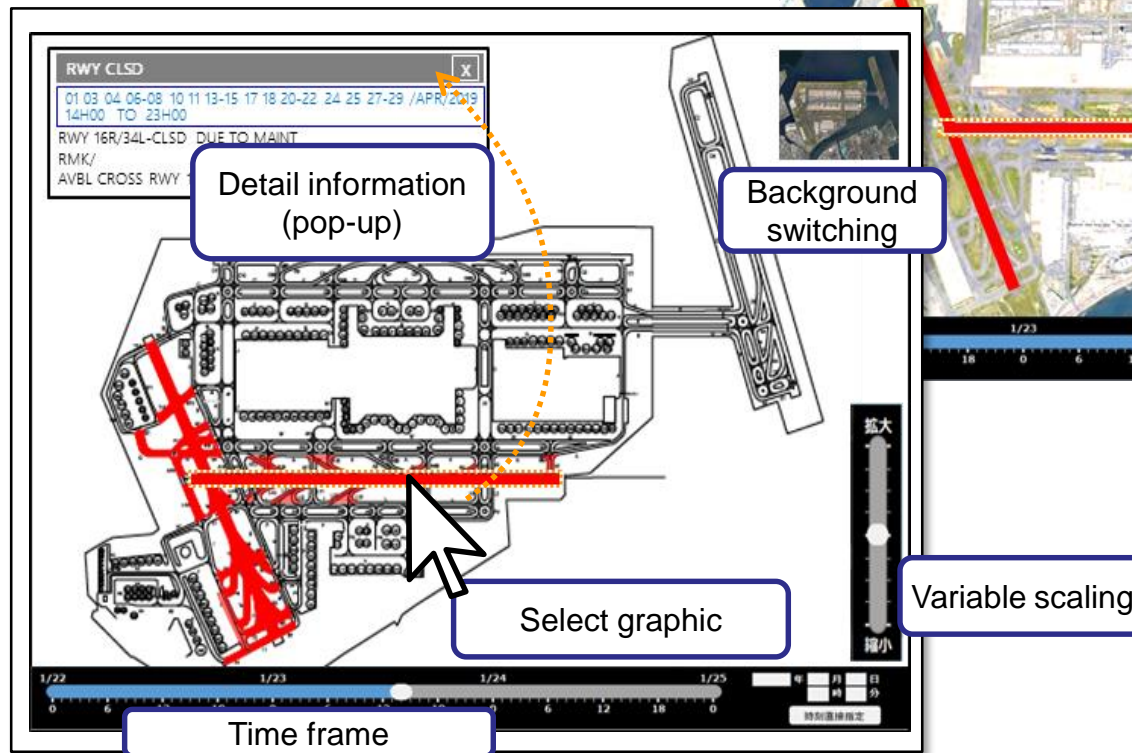
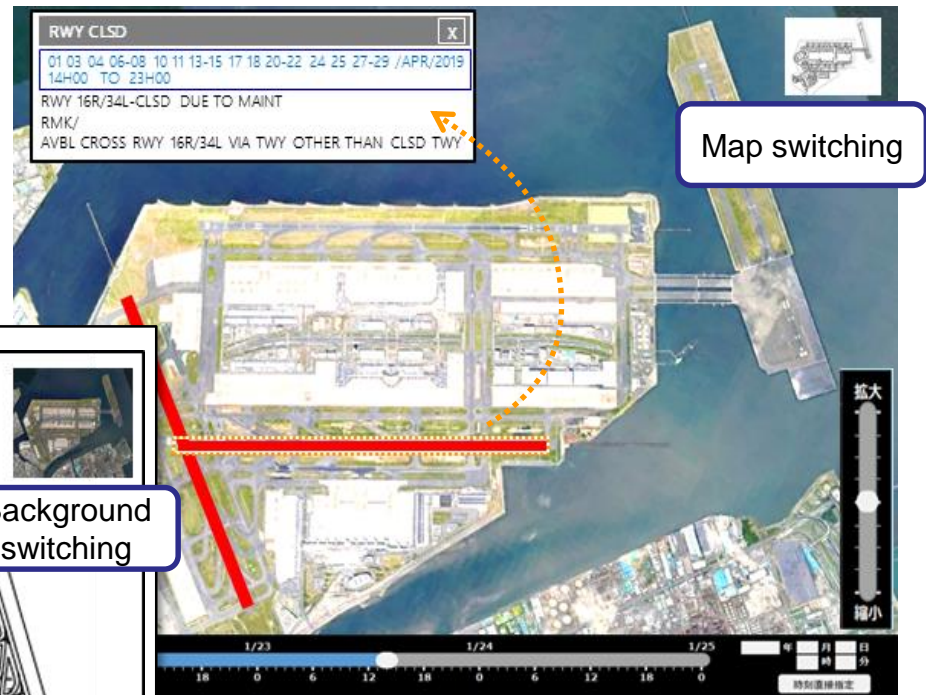
Permanent information (AIP dataset)
Route, Airspace, Nav aids...



What is Digital NOTAM ?

➤ Integrated aeronautical information(AIP and NOTAM) to allow for comprehensive review

- Computers analyze machine-readable digital data
- Automatically draw graphics on map
- Human interpretation of the content from computer-analyzed results



What is Digital NOTAM ?

Visualization of airspace (En-route)



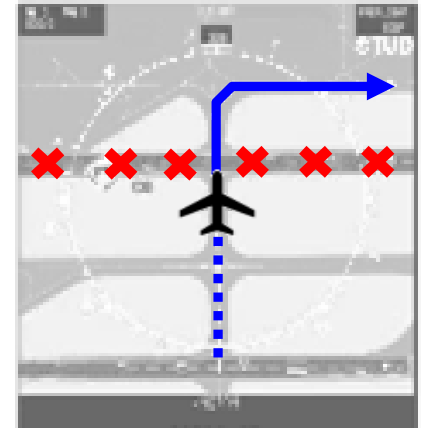
Improve airspace safety

Visualization of closed areas etc. (Airport)



Avoid Runway incursions

Display on onboard avionics



Increase system-use compatibility

Improve Situational Awareness of ATM stakeholders

AIM as SWIM Service

Display on-demand
(Meet the needs of each operation)

Improve real-time performance