



ICAO

UNITING AVIATION

Economic Impact of COVID-19 on Civil Aviation

Sijia Chen

Air Transport Officer, Economic Development

ICAO Headquarters

sjiachen@icao.int





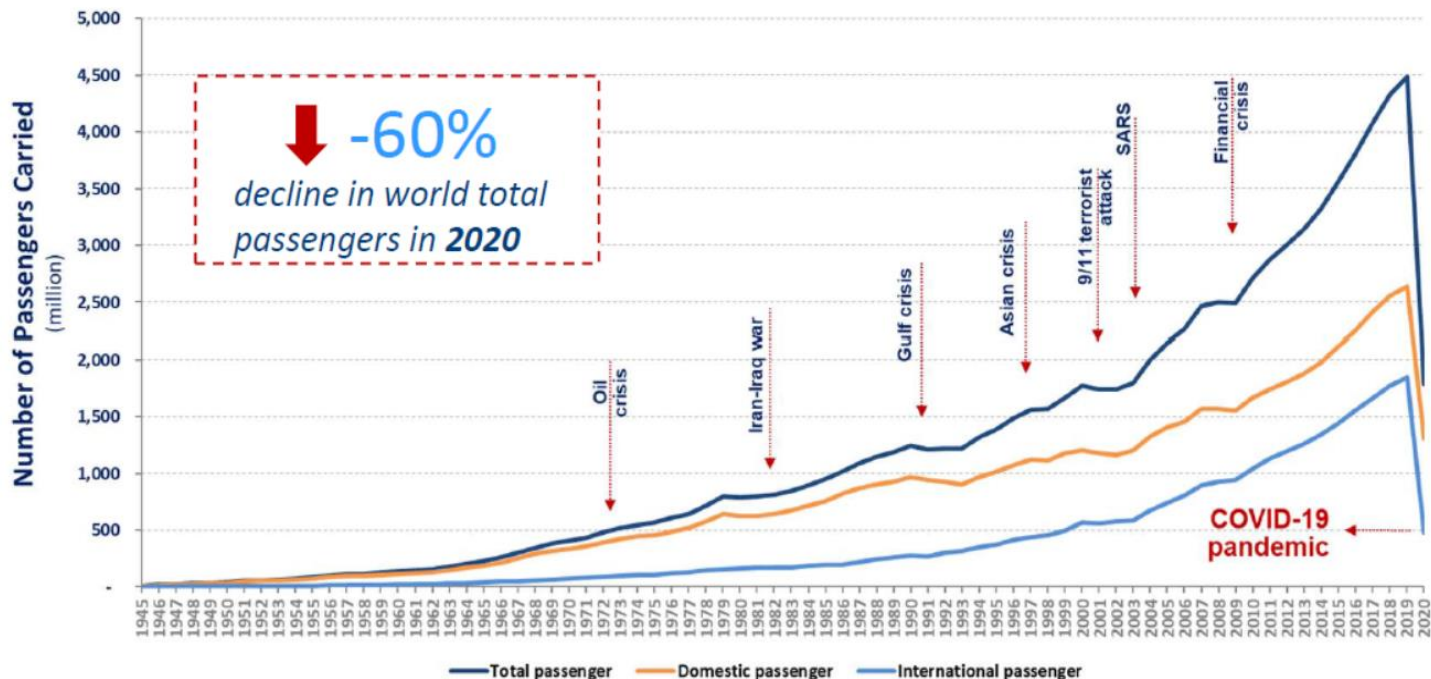
ICAO

UNITING AVIATION

Global and Regional Overview

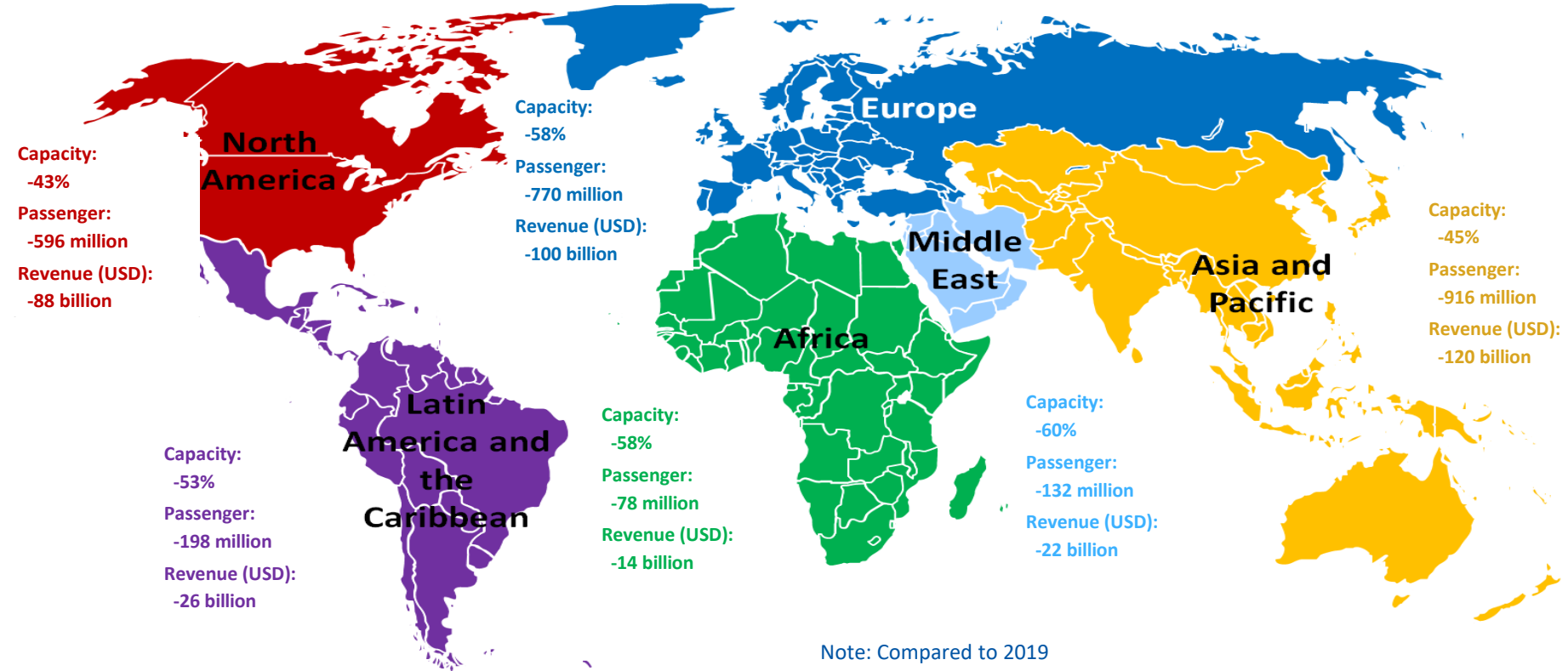
World passenger traffic collapses with unprecedented decline in history

World passenger traffic evolution 1945 – 2020*





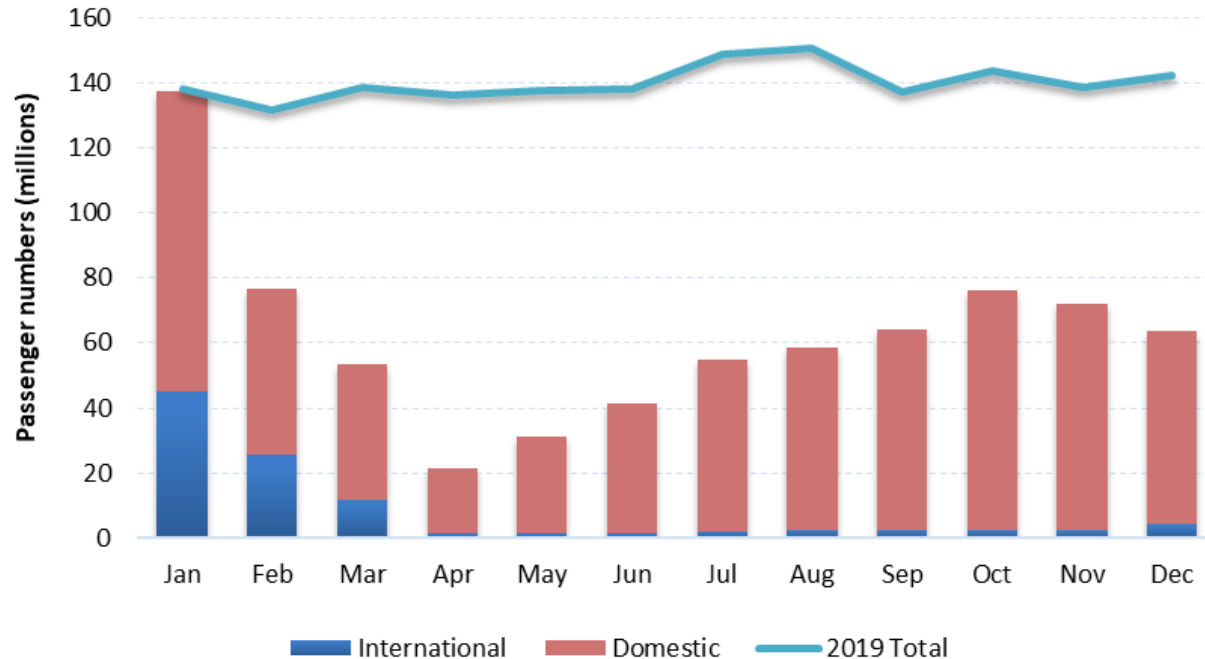
Estimated impact on passenger traffic and revenues by region for 2020



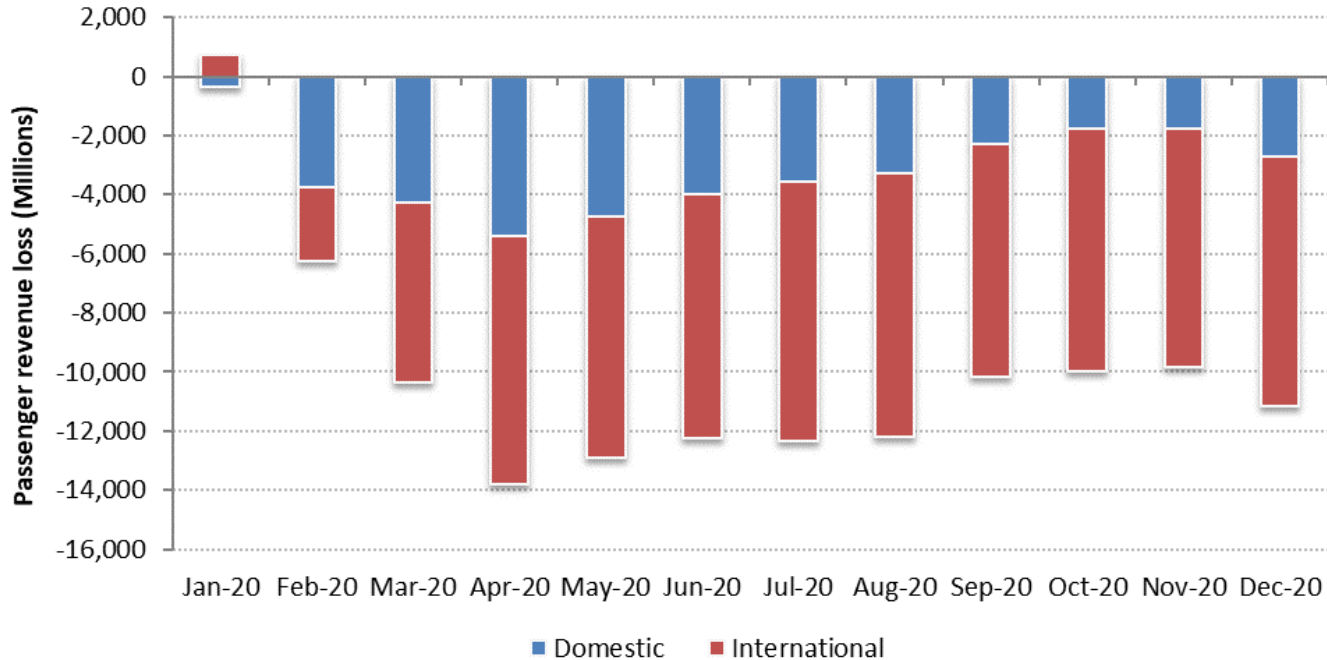
Note: Compared to 2019

Significant decline in passenger numbers with marginal improvements

Evolution of Passenger Numbers - Asia and Pacific -



Loss in airline passenger revenues by month in 2020

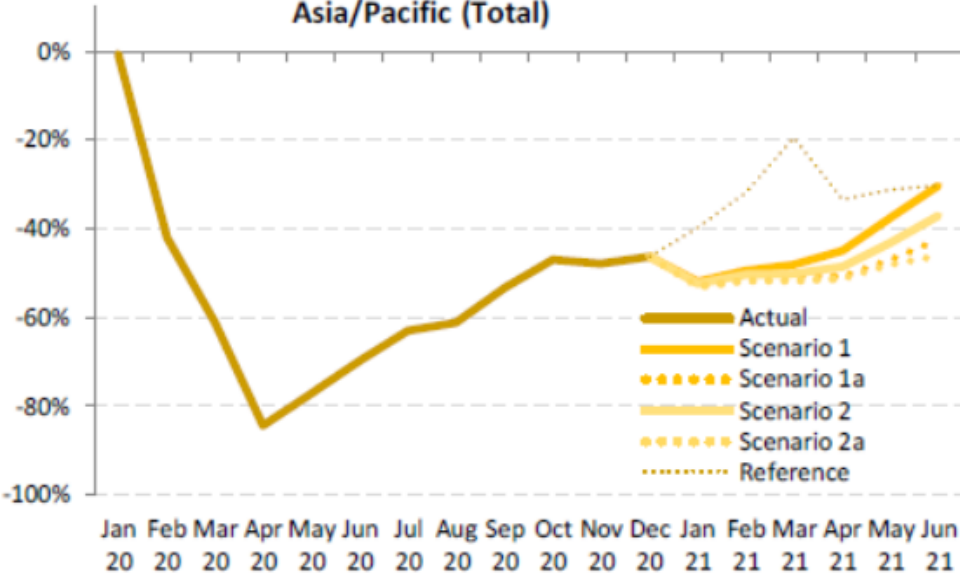




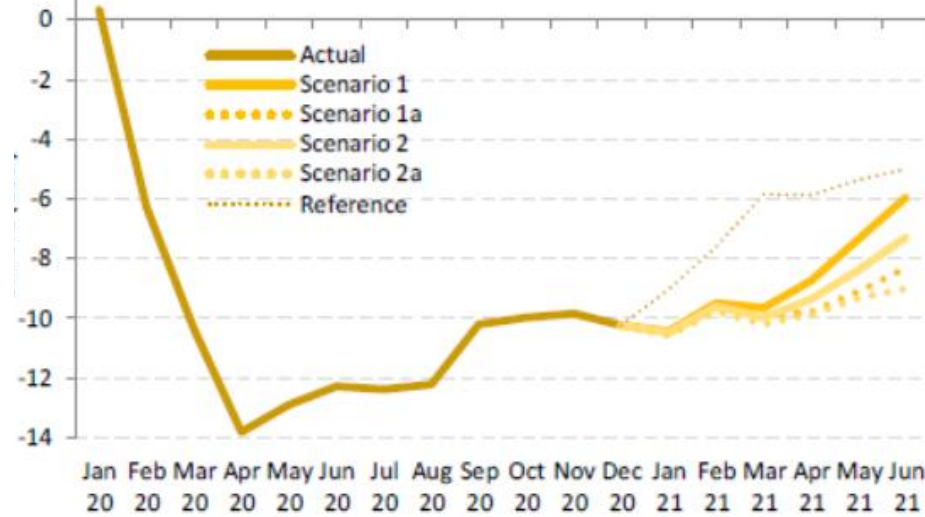
Projection of decline in passenger numbers

Projection of decline in passenger revenues

Asia/Pacific (Total)



Asia/Pacific (Total)





Mitigate Financial Stress: Economic and Financial Measures



ICAO

UNITING AVIATION

CART Recommendation 10 Economic and Financial Measures

Council Aviation Recovery Task Force (CART) Recommendation on Economic and Financial Measures

***CART Recommendation 10** - Member States should consider appropriate extraordinary emergency measures to support financial viability and to maintain an adequate level of safe, secure and efficient operations, which should be inclusive, targeted, proportionate, transparent, temporary and consistent with ICAO's policies, while striking an appropriate balance among the respective interests without prejudice to fair competition and compromising safety, security and environmental performance.*



ICAO Guidance on Economic and Financial Measures

Guidance on Economic and Financial Measures summarizes a range of possible measures that can be explored by States and the aviation companies to cope with the economic fallout of the pandemic.

State financial and regulatory support



Industry financial and operational measures



<https://www.icao.int/sustainability/Pages/Economic-and-financial-measures.aspx>



Economic Impact Analysis of COVID-19:

<https://www.icao.int/sustainability/Pages/Economic-Impacts-of-COVID-19.aspx>

COVID-19 Air Traffic Dashboards:

<https://www.icao.int/sustainability/Pages/COVID-19-Air-Traffic-Dashboard.aspx>

Guidance on Economic and Financial Measures:

<https://www.icao.int/sustainability/Pages/Economic-and-financial-measures.aspx>



Operational impact



Aircraft utilization



Country-pair traffic



Economic impact - Air carriers



ECONOMIC IMPACT - AIRPORTS



ECONOMIC IMPACT - ANSPS





ICAO

UNITING AVIATION



ICAO

North American
Central American
and Caribbean
(NACC) Office
Mexico City

South American
(SAM) Office
Lima

ICAO
Headquarters
Montréal

Western and
Central African
(WACAF) Office
Dakar

European and
North Atlantic
(EUR/NAT) Office
Paris

Middle East
(MID) Office
Cairo

Eastern and
Southern African
(ESAF) Office
Nairobi

Asia and Pacific
(APAC) Sub-office
Beijing

Asia and Pacific
(APAC) Office
Bangkok



THANK YOU