



BMKG

PREPARATION OF TAILORED MET-ATM IMPLEMENTATION IN INDONESIA

Presented by : Indonesia

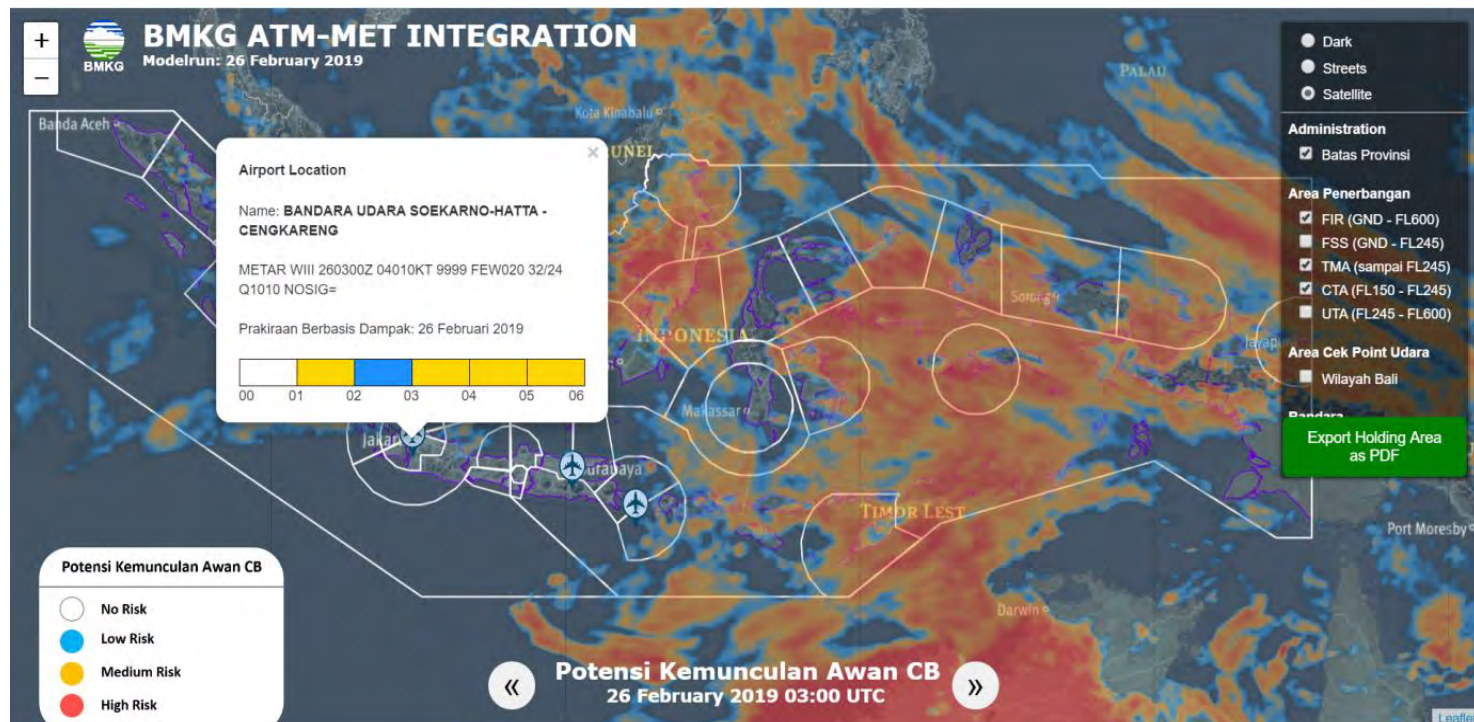
INTRODUCTION

- Developing meteorological information services to support effective and efficient air traffic management services;
- BMKG has been participating in National ATFM Task Force, and involved in Collaboration Decision Making (ATFM/A-CDM) process, to determine the flight operation



DISCUSSION

- BMKG created Tailored MET-ATM System, shows graphical information meteorological forecast in the air space;
- Impact-based forecast at aerodrome and holding area surround the airport



DISCUSSION

- Impact-based forecast according to aerodrome forecast and warnings in each airport;
- Forecast information in Holding area consistt of temperature, wind direction and speed, also forecast development and spread of Cumulunimbus

PRAKIRAAN KONDISI CUACA HOLDING AREA
 WILAYAH BANDAR UDARA I GUSTI NGURAH RAI - DENPASAR
 26 Februari 2019 00 - 02 UTC

LOKASI	00.00 UTC					01.00 UTC					02.00 UTC				
	Arah Angin	Kecepatan Angin	Suhu	Cuaca	Awan CB	Arah Angin	Kecepatan Angin	Suhu	Cuaca	Awan CB	Arah Angin	Kecepatan Angin	Suhu	Cuaca	Awan CB
KASAP (FL 050 - 100)	selatan	5 knot	23 °C	clear sky		selatan	9 knot	25 °C	cerah		tenggara	10 knot	25 °C	hujan ringan	
SINGA (FL 050 - 100)	tenggara	9 knot	23 °C	clear sky		tenggara	10 knot	23 °C	clear sky		tenggara	9 knot	24 °C	hujan ringan	
KATAK (FL 050 - 100)	tenggara	14 knot	23 °C	clear sky		tenggara	12 knot	23 °C	hujan ringan		tenggara	8 knot	24 °C	clear sky	
TIKUS (FL 050 - 100)	tenggara	14 knot	24 °C	clear sky		tenggara	16 knot	24 °C	clear sky		tenggara	13 knot	25 °C	clear sky	
KOBRA (FL 050 - 100)	timur	6 knot	23 °C	clear sky		tenggara	9 knot	25 °C	hujan ringan		selatan	7 knot	25 °C	hujan ringan	
KEPIK (FL 050 - 100)	selatan	15 knot	24 °C	clear sky		selatan	13 knot	25 °C	clear sky		selatan	16 knot	26 °C	clear sky	

Model: ECMWF
 Valid Until: 26 Februari 2019 12.00 UTC
 Issued by : Forecaster Stasiun Meteorologi Bali

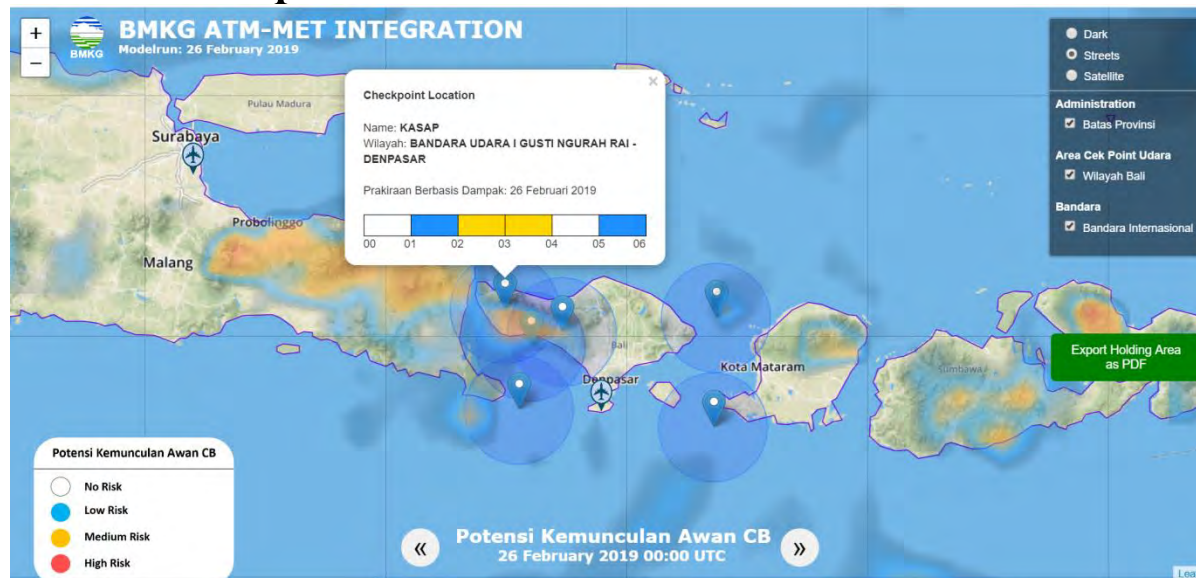
PRAKIRAAN KONDISI CUACA HOLDING AREA
 WILAYAH BANDAR UDARA I GUSTI NGURAH RAI - DENPASAR
 26 Februari 2019 03 - 05 UTC

LOKASI	03.00 UTC					04.00 UTC					05.00 UTC				
	Arah Angin	Kecepatan Angin	Suhu	Cuaca	Awan CB	Arah Angin	Kecepatan Angin	Suhu	Cuaca	Awan CB	Arah Angin	Kecepatan Angin	Suhu	Cuaca	Awan CB
KASAP (FL 050 - 100)	tenggara	8 knot	25 °C	hujan ringan		selatan	8 knot	23 °C	clear sky		selatan	8 knot	23 °C	cerah	
SINGA (FL 050 - 100)	tenggara	10 knot	24 °C	clear sky		tenggara	12 knot	24 °C	clear sky		tenggara	11 knot	23 °C	clear sky	
KATAK (FL 050 - 100)	tenggara	10 knot	24 °C	clear sky		tenggara	11 knot	24 °C	clear sky		tenggara	12 knot	23 °C	clear sky	
TIKUS (FL 050 - 100)	tenggara	12 knot	25 °C	clear sky		tenggara	12 knot	25 °C	clear sky		tenggara	15 knot	24 °C	clear sky	
KOBRA (FL 050 - 100)	selatan	7 knot	25 °C	hujan ringan		tenggara	7 knot	24 °C	clear sky		tenggara	7 knot	23 °C	cerah	
KEPIK (FL 050 - 100)	selatan	15 knot	26 °C	clear sky		selatan	17 knot	25 °C	clear sky		selatan	17 knot	24 °C	clear sky	

Model: ECMWF
 Valid Until: 26 Februari 2019 12.00 UTC
 Issued by : Forecaster Stasiun Meteorologi Bali

DISCUSSION

- Categorization of impact-based is determined according to the weather condition which will affect the reduction of capacity both of the airport and the air space managed by air navigation service provider;
- The categorization has been made based on mutual-understanding between meteorological services provider and ANSPs in each airport



ACTION BY THE MEETING

The meeting is invited to provide input on matters that need to be developed in tailored meteorological services and information to needs of flight operations

THANK YOU

**AERONAUTICAL METEOROLOGICAL CENTER
METEOROLOGICAL, CLIMATOLOGICAL AND GEOPHYSICAL AGENCY OF REPUBLIC INDONESIA**

Detailed information: www.bmkg.go.id, mobile application: **Info BMKG**
twitter: [@infoBMKG](https://twitter.com/infoBMKG), facebook: www.bmkg.go.id
instagram: **Infobmkg**