



ICAO BANGKOK | UNITING AVIATION

IWXXM Request and Reply service

Kentaro TSUBOI

*Japan Meteorological Agency
RODB Tokyo*

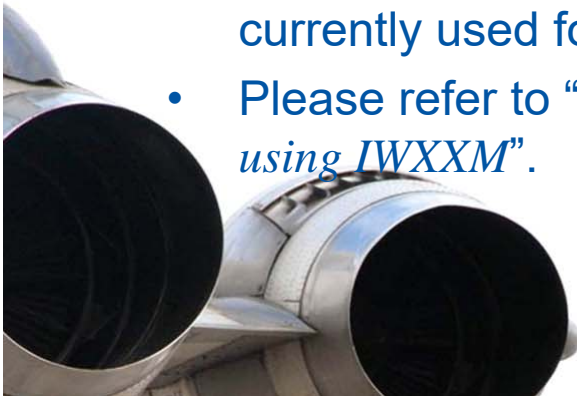
Webinar on the implementation of the ICAO Meteorological Information Exchange Model (IWXXM), 27 to 29 October 2020





Request and Reply service for OPMET

- The RODBs provide a request and reply facility to allow users to request OPMET on a non-regular or occasional basis.
- Guidance on the interrogation procedures is provided in *Appendix H, APAC ROBEX Handbook (13th edition, March 2019)*.
- Procedure of Request and Reply for IWXXM data is the same way as currently used for TAC data.
- Please refer to “*Guidelines for the Implementation of OPMET Data Exchange using IWXXM*”.





Format of Request message

```

GG xxxxYZYX
YYGGgg yyyyyyyy
RQM/TTCCCC,(report(s)).../TTAAii, (bulletin(s))...=
RQM/TTCCCC,(report(s)).../TTAAii, (bulletin(s))...=
...

```

GG Priority Indicator

xxxxYZYX AFTN address of the databank

YYGGgg date-time group specifying the filing time of the request message

yyyyyyyy AFTN address of the originator of the request

RQM/ indicates the start of a data request line → **RQX/** for **IWXXM**

TT WMO data type identifier

CCCC 4-letter location indicator

or

AAii bulletin identifier (WMO manual 386, table C1 for AA)

= indicator of the end of a request line

Example

TAC request:

```

RQM/SARJAA=
RQM/SAJP31=
RQM/SARJAA/FTRJGG=
RQM/FTRJAA,RJBB,RJGG,RJTT=

```

IWXXM request:

```

RQX/LARJAA=
RQX/LAJP31=
RQX/LARJAA/LTRJGG=
RQX/LTRJAA,RJBB,RJGG,RJTT=

```

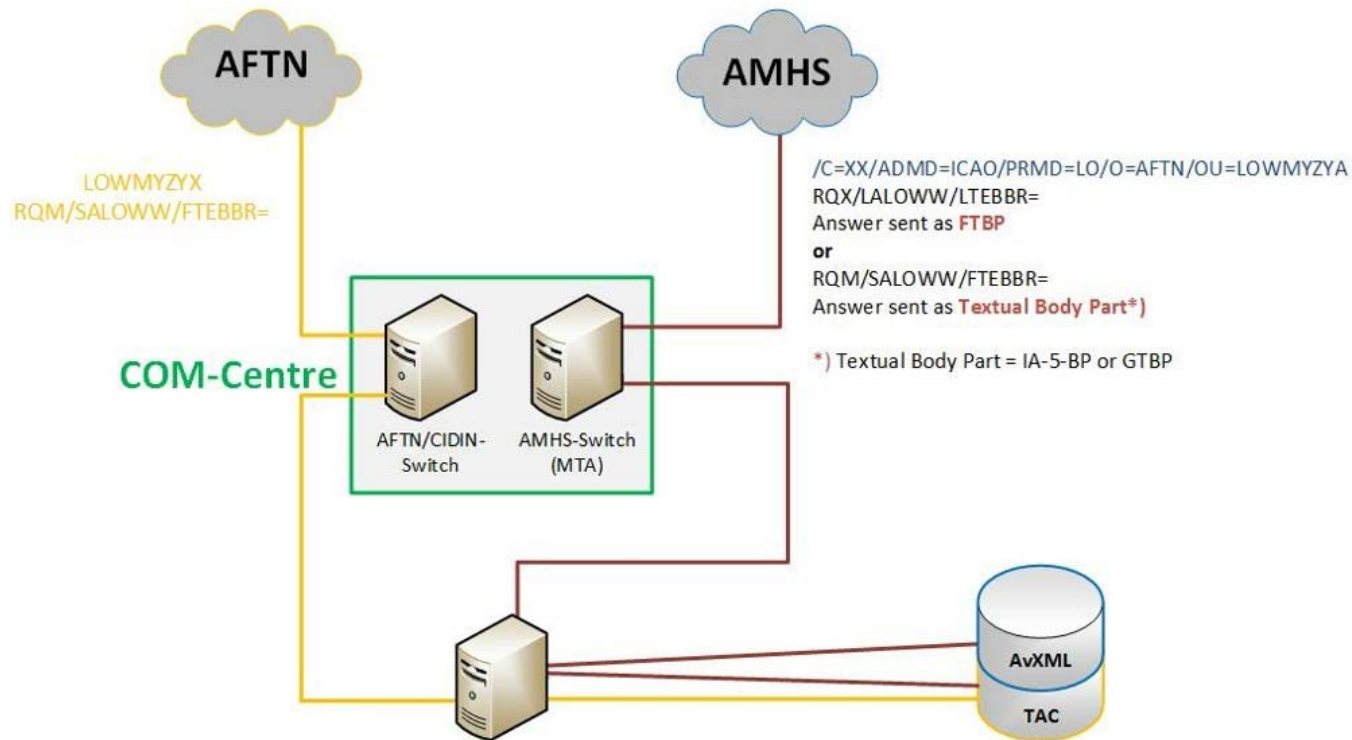


TAC & IWXXM Databank

	IWXXM	TAC
Data Request	Textual Body Part (AMHS)	IA5 text (AFTN/AMHS)
	“ RQX /” is used as the start of the query	“ RQM /” is used as the start of the query
	T ₁ T ₂ = "LA","LP", "LT", ...	T ₁ T ₂ = "SA","SP", "FT", ...
Data Reply	File Transfer Body Part (AMHS with FTBP)	IA5 text (AFTN/AMHS)
	Reply heading : LAXX99, LTXX99, ...	Reply heading : SAXX99, FTXX99, ...



TAC & IWXXM Databank



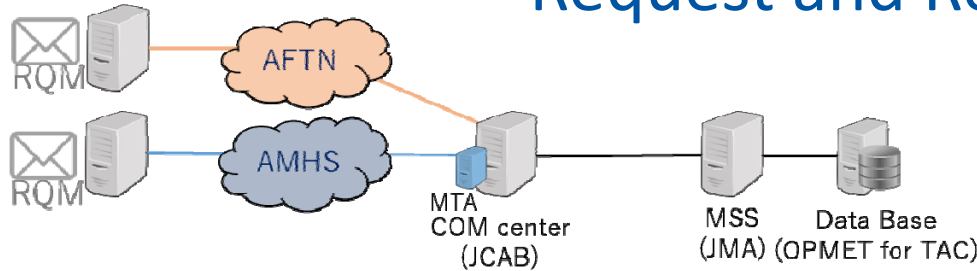


IWXXM Request and Reply service in APAC

RODB	Status of Request and Reply service for IWXXM
Bangkok	Bangkok's RQX service will start in November 2020 (at least IWXXM METAR/TAF/SIGMET Data of Thailand)
Brisbane	Planned but not prior to late 2022
Singapore	Singapore has implemented the functionality on IWXXM messages request
Tokyo	Tokyo's RQX service will start in March 2021
Nadi	Planned but not prior to late 2022



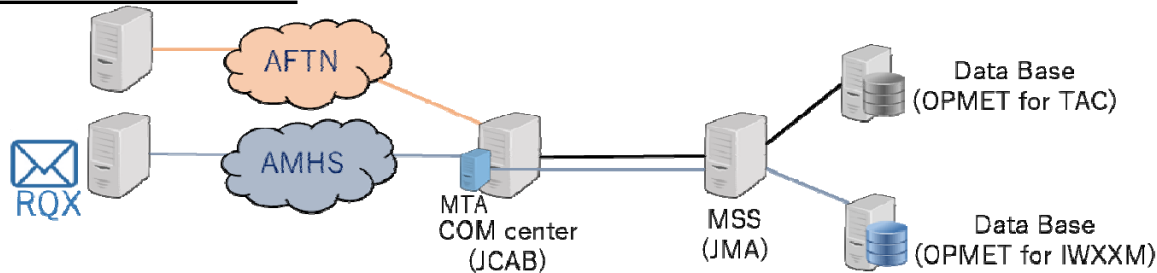
Request for TAC



Request and Reply of RODB Tokyo

AFTN address for TAC : RJTDZYX
AMHS address for TAC : C=XX/A=ICAO/P=RJ/O=AFTN/OU1=RJTD/CN=RJTDZYX

Request for IWXXM



AMHS address for IWXXM :
C=XX/A=ICAO/P=RJ/O=AFTN/OU1=RJTD/CN=RJTDZYX



ICAO BANGKOK | UNITING AVIATION



ICAO

- North American Central American and Caribbean (NACC) Office
Mexico City
- South American (SAM) Office
Lima
- ICAO Headquarters
Montréal
- Western and Central African (WACAF) Office
Dakar
- European and North Atlantic (EUR/NAT) Office
Paris
- Middle East (MID) Office
Cairo
- Eastern and Southern African (ESAF) Office
Nairobi
- Asia and Pacific (APAC) Sub-office
Beijing
- Asia and Pacific (APAC) Office
Bangkok



THANK YOU