



MINISTRY OF INTERIOR
AND NATIONAL
ADMINISTRATION

Overview of the National Disaster Operations Centre(NDOC)

**NATIONAL DISASTER
RISK MANAGEMENT STRATEGY
2024-2030**

Participant
for Stakeholders

Presented on 24th June 2025
ICAO/KCAA REGIONAL SEMINAR ON
AWARENESS OF RISK ASSESSMENT PROCESSES
AND ON DOC 10084- NAIROBI

By I K GULEID, MBS.



MINISTRY OF INTERIOR
AND NATIONAL
ADMINISTRATION

NATIONAL DISASTER RISK MANAGEMENT STRATEGY 2024-2030

Participant
for Stakeholders

The Kenya National Disaster Operations Centre (NDOC) is the primary entity responsible for coordinating disaster response and management in Kenya

Its core functions include:

- **Monitoring disasters**
- **Mobilizing national resources**
- **Coordinating disaster response activities**
- **Collaborating with various stakeholders**

❖ **The NDOC also plays a crucial role in public awareness, education, promoting disaster risk reduction strategies**



MINISTRY OF INTERIOR
AND NATIONAL
ADMINISTRATION

REPUBLIC OF KENYA

Specific Activities:

- 1. Disaster Response: Overseeing disaster response operations, directing resources for swift action during crises**
- 2. Engaging the Kenya Defence Forces: Utilizing the KDF to ensure essential supplies reach affected areas**
- 3. Tracking Potential Hazards: Continuously monitoring and tracking potential hazards and risks**
- 4. Evacuation and Refuge: Organizing evacuations and providing safe refuge for displaced individuals**
- 5. Public Safety Education: Educating the public on safety measures and disaster prevention techniques**

NATIONAL DISASTER
RISK MANAGEMENT STRATEGY

2024-2030

Participatory
for Stakeholders

Specific Activities Contd' :

6. Long-Term Resilience: Focusing on long-term resilience to prevent future disasters

7. Supporting County Governments: Assisting county governments in developing evacuation plans and providing shelter for internally displaced persons (IDPs)

8. Facilitating International Aid: Assisting with the clearance of aircraft, ships, customs, and visas for international disaster responders

In essence, the NDOC is the central hub for all disaster-related activities in Kenya, working to minimize the impact of disasters and build a more resilient nation

Why Strategy?

1. **Aligns with international, regional, and national frameworks, eg, Priority 2 of the Sendai Framework 2015-2030 on DR Governance**
2. **Address compliance gaps, eg the provisions of Sections 11 & 12 of the Public Service Commission (Performance Management) Regulations**
3. **Shifts from reactive to proactive DRM – Integrating risk reduction into development**



Strategic Objectives

01

**Strengthen Governance
(Legal and Institutional
Framework)**

02

**Enhance the capacities of
DRM Institutions**

03

**Improve disaster
information management**

04

**Build Resilience at
National and County
Levels**

05

**Mainstream proactive
DRM in all sectors –
Climate, urban planning,
Health etc**

Guiding Principles



Humanity

**Protect
Vulnerable
Groups (CoK
2010 Art 43)**



**Shared
Responsibility**

**National
Government,
County
Governments,
and
Stakeholders**



Inclusivity

**Gender,
Disability and
Marginalized
Groups**



**Multi-
Hazards
Approach**

**Natural,
Technological,
and human-
induced risks**



**Evidence-
based DRM**

**Data-driven
decision making**

8 Strategic Pillars



National DRM Strategy

Institutional Legal
Framework

County-Level
Customization

Institutional capacity
building

Information Management

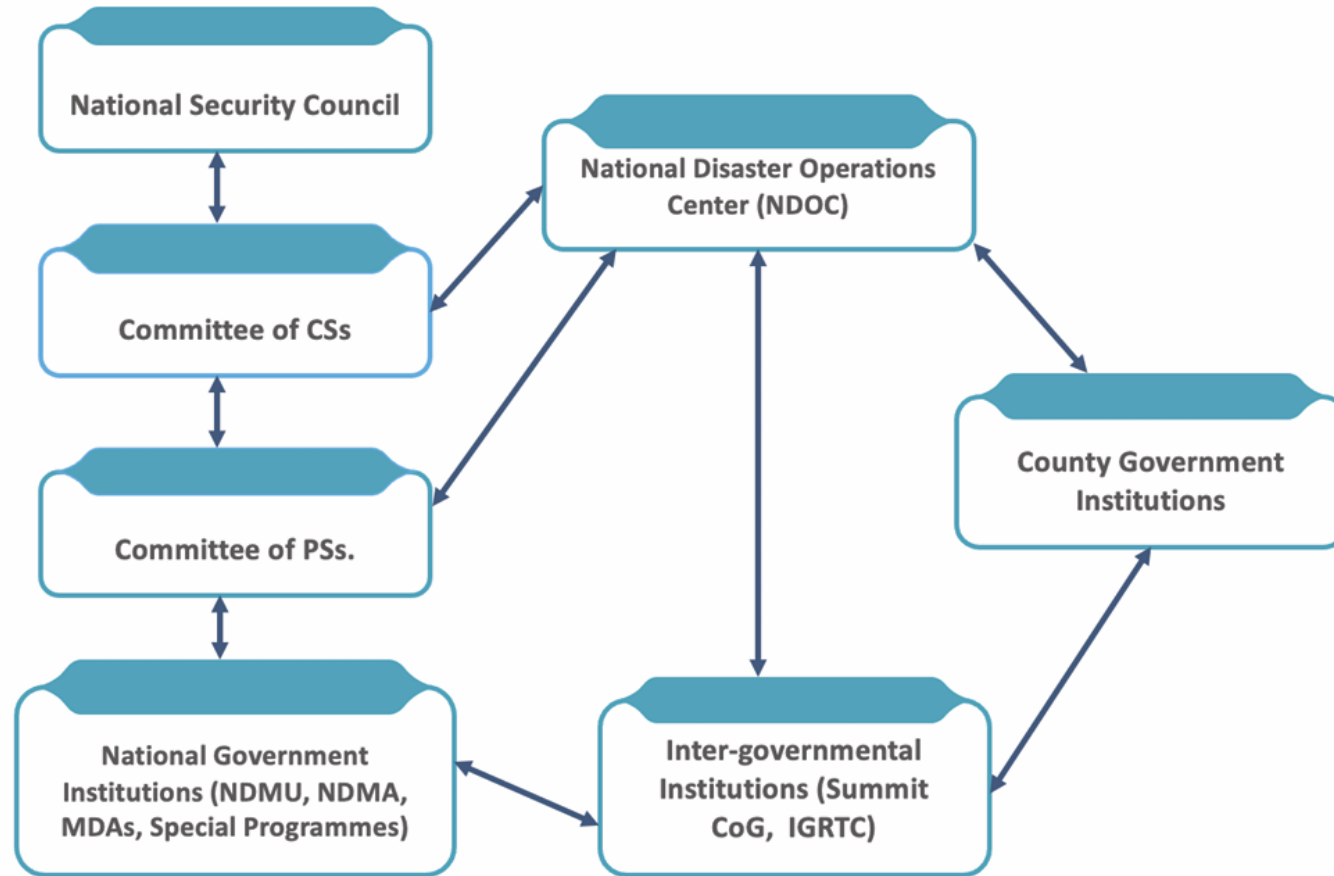
Resilience Enhancement

Mainstreaming DRM

Anticipatory Action

Indigenous Knowledge
Integration

Governance Structure



Implementation and Financing

- **Budget allocations – Mainstreamed into CIDPs and MTP-IV**
- **Reserve Funds – eg, County Emergency Funds,**
- **Partnerships – UN agencies, Private Sector, CSOs**





Monitoring, Evaluation and Learning Framework

- **Early Warning Systems – Regular Updates**
- **DRM Intervention Reviews – Efficiency/Impact**
- **Integration with NIMES/CIMES – National and County ME&L systems**
- **Key Metrics:**
 - **#of Counties with multi-hazard risk profiles**
 - **# of Trained DRM personnel**