

# CORSIA AT A GLANCE SERIES

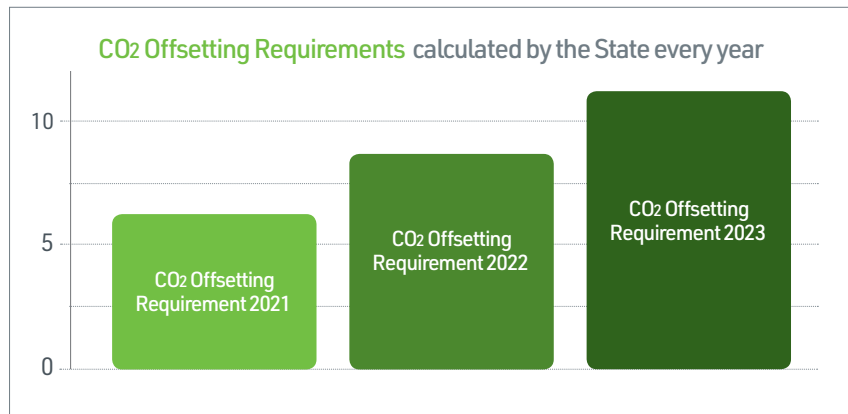
## CORSIA OFFSETTING REQUIREMENT STEPS

- 1** The State calculates the offsetting requirements attributed to an aeroplane operator.

$$\text{Operator's annual emissions} \times \text{Growth Factor} = \text{CO}_2 \text{ offsetting requirements}$$

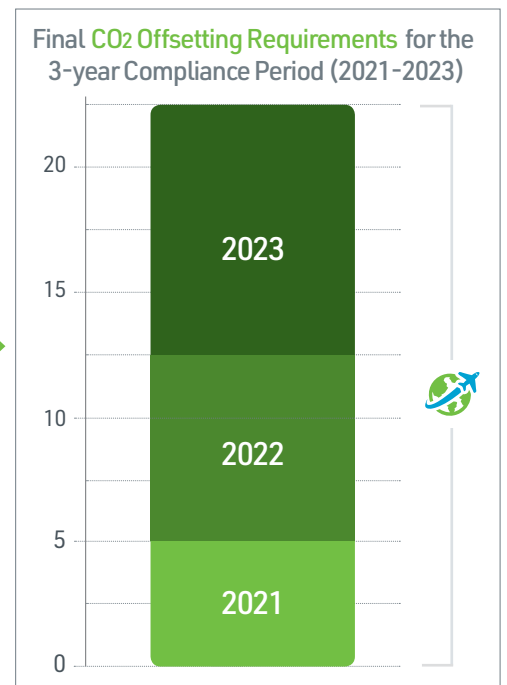
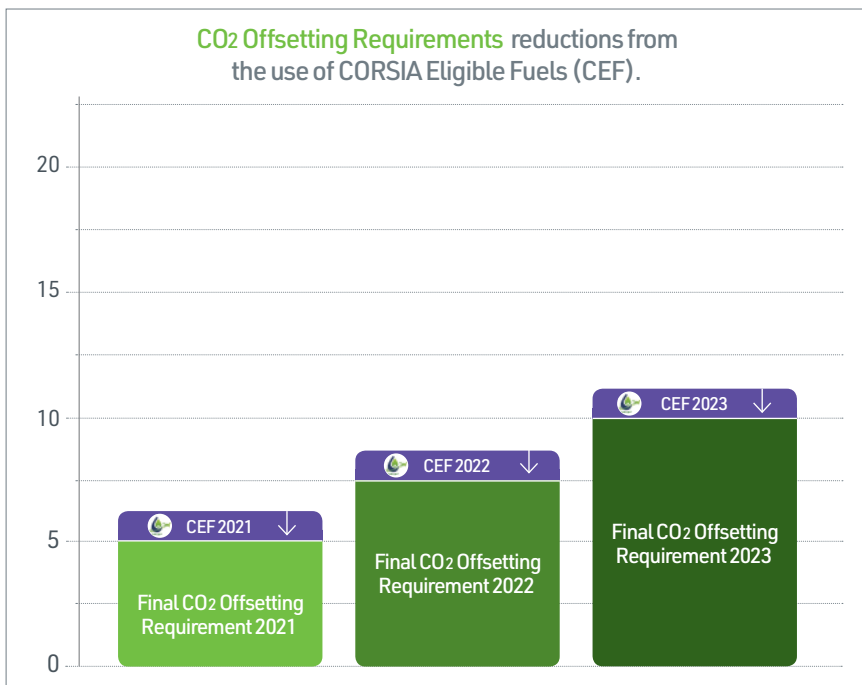
In a given year from 2021, the **Growth Factor** is the percent increase in the amount of emissions from the baseline, and is calculated by ICAO.

The **Growth Factor** changes every year taking into account both the sector's and the individual operator's emissions growth.



- 2** The operator reports the use of CORSIA Eligible Fuels (CEF) for a 3-year compliance period.

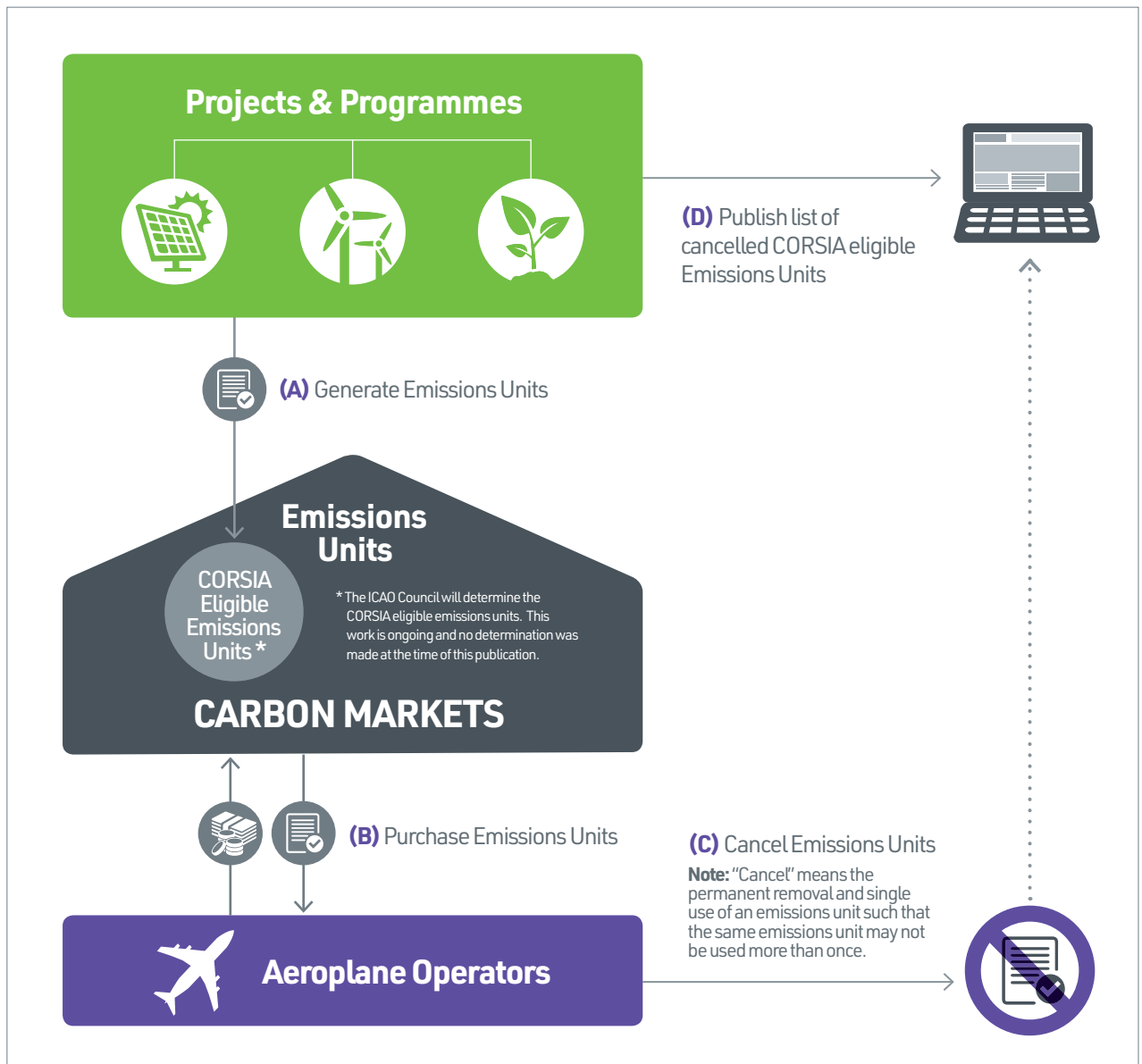
- 3** The State accounts for the benefits from the use of CEF and informs the operator of its final CO<sub>2</sub> offsetting requirements for a 3-year compliance period.



# 4

## The operator purchases and cancels eligible emissions units equivalent to its final CO<sub>2</sub> offsetting requirements for the compliance period.

- **(A) Generate:** Emissions reduction projects generate emissions units.
- **(B) Purchase:** Emissions units are purchased in carbon markets on a per-tonne basis, where **1 Emissions Unit = 1 Tonne of CO<sub>2</sub>**.
- **(C) Cancel:** Operators cancel CORSIA eligible emissions units. Cancellation takes place within a registry designated by a CORSIA Eligible Emissions Unit Program.
- **(D) Publish:** Operators request each CORSIA Eligible Emissions Unit Program Registry to make visible the cancellation information on the registry's public website.



# 5

## The operator provides a verified Emissions Units Cancellation Report to the State, who checks the Report and informs ICAO.