



OACI

L'AVIATION UNIE

Atelier USOAP sur la méthode de surveillance continue (CMA)

Module 4

Comment effectuer une auto-évaluation
à partir des PQ et
soumettre/actualiser les
plans d'actions correctrices (CAP)

Emplacement/date



L'objectif de ce module est d'expliquer :

- Comment effectuer une auto-évaluation à partir des PQ ; et
- Comment soumettre et actualiser les plans d'actions correctrices (CAP)



Aperçu

- Comment effectuer une auto-évaluation à partir des PQ.
- Comment soumettre les CAP.
- Comment actualiser les CAP.





Comment effectuer une auto-évaluation à partir des PQ

Auto-évaluation à partir des PQ

- *L'auto-évaluation à partir des PQ* signifie essentiellement que les États répondent aux questions de protocole (PQ) au moyen du cadre en ligne (OLF) de la CMA afin d'évaluer la situation de leurs systèmes de supervision de la sécurité de l'aviation civile.
- En particulier, les États :
 - évaluent le “**niveau de mise en œuvre**” de chaque PQ (soit satisfaisant, non satisfaisant ou non applicable) ;
 - présentent leurs “**observations**” pour justifier le “**niveau**”
 - joignent les “**preuves**” justificatives.

Self-Assessment



Auto-évaluation à partir des PQ (suite)

- Avant de s'auto-évaluer à partir de l'OLF, les États devraient mettre en œuvre leurs CAP et actualiser le niveau de mise en œuvre pour chaque constatation de PQ.
- L'outil “**Self-Assessment**” (**Auto-évaluation**) de l'OLF permet aux États :
 - d'indiquer/d'actualiser le niveau de mise en œuvre de chaque PQ ;
 - de présenter les preuves justificatives ;
 - d'effectuer des audits internes ;
 - de se préparer pour les activités de l'USOAP CMA ; et
 - de surveiller leurs propres systèmes de supervision de la sécurité de l'aviation civile.

Auto-évaluation à partir des PQ (suite)

Les États doivent procéder à une auto-évaluation en priorité :

- a) à partir des PQ qui ont révélé une situation “non satisfaisante” lors d’une activité précédente de l’USOAP ;
- b) à partir des PQ créées suite à des modifications de PQ dont l’état correspondant est jugé “indéterminé” ;
- c) à partir des PQ modifiées, si les modifications ont une incidence sur l’état correspondant ;
- d) à partir des PQ dont le niveau de mise en œuvre a changé suite à des modifications apportées à leur système aéronautique, leurs règlements et/ou leurs procédures.

Après l'auto-évaluation

- L' OACI utilise les résultats des auto-évaluations des États pour se préparer pour les activités de la CMA.
- Au moyen de ces activités, l'OACI examine et valide l'auto-évaluation d'un État pour déterminer *le plus récent* niveau de mise en œuvre effective (EI) de sa capacité de supervision de la sécurité.
- L'OACI révisera régulièrement les PQ afin de tenir compte des modifications apportées aux documents de référence.
- Il est important que les États se réfèrent toujours aux versions citées dans les documents de référence.

Comment effectuer une auto-évaluation à partir des PQ

- Accédez au site web du cadre en ligne (OLF) de l'USOAP CMA : www.icao.int/usoap.
- Cliquez sur l'icône **“Self-assessment”** (Auto-évaluation).

Self-Assessment





Auto-évaluation à partir des PQ

Language

State

ICAO CMA Training site - Any data updates are temporary and for practice only !!!

Welcome:Futureland NCMC [Logout](#) [Home](#) [Help](#)

State Dashboard **Protocol Question (PQ)** Finding & Recommendation (F&R) Corrective Action Plan (CAP) User Management

Protocol Question (PQ) / Manage State Self-Assessment

Status of Implementation Audit Area Audit Area Group Critical Element Critical Element Group
 SSC New Protocol Status PQ/Finding No. [Clear](#)

Choisissez les bonnes options sur la barre d'outils pour obtenir les renseignements souhaités, tel qu'indiqué ci-dessous.

PQ No.	Show/Hide Extended Columns	Question	Status of Implementation by ICAO	CMA Protocols as of May 2013
1.001 LEG CE-1 S		Has the State developed and implemented procedures for the amendment of its specific regulations taking into consideration ICAO provisions and their amendments?		
1.005 LEG CE-1 S		Does the primary aviation legislation provide for the introduction/adoption and subsequent promulgation of civil aviation regulations?		
1.007 LEG CE-2 S		Does the State's rule-making process ensure the timely promulgation of specific operating regulations in compliance with the Annexes?		
1.009 LEG CE-2 N/S		Has the State developed and implemented procedures for the amendment of its specific regulations taking into consideration ICAO provisions and their amendments?		
1.011 LEG CE-2 S		Are the primary aviation legislation and the associated operating regulations available to the public?		
1.013 LEG CE-1 S		Does the primary aviation legislation provide for the establishment of a civil aviation organization(s) and the appointment of a Director General (DG)/Chief Executive Officer (CEO)?		
1.015 LEG		Does the State's primary aviation legislation clearly delegate authority to the Director		

Results of State Assessment--"Read/Write" Draft Copy

Reply to Protocol Question Status of Implementation

Last Modified [Click To View CAP](#)

Remarks:

1.The State has NOW amended regulations included aerodromes with the provisions of the LATEST ICAO Annex amendment.
 2.Procedure ABC revised to verify all regulation(include aerodromes)remain up to date.
 3.AIP revised and published with all significant differences included aerodromes.

Evidence:

1. www.futureland.com/regulations/aerodromes; Gazette N°1
 2. Regulation ABC page 4 (List Effective Page), 5 (Record of rAerodrome regulations page 3, 4 and 5; Annexes) and 10 (procedure).

Auto-évaluation à partir des PQ – ICVM

Language: State: **ICAO CMA Training site - Any data updates are temporary and for practice only !!!** Welcome: Futureland NCMC [Logout](#) [Home](#) [Help](#)

State Dashboard **Protocol Question (PQ)** Finding & Recommendation (F&R) Corrective Action Plan (CAP) User Management

Protocol Question (PQ) / Manage State Self-Assessment

Status of Implementation: Audit Area: Audit Area Group: Critical Element: Critical Element Group:
SSC: PQ/Finding No.: [Clear](#)

Status of Implementation by ICAO CMA Protocols as of May 2013

Reply to Protocol Question: Status of Implementation: CSA Audit Finding: SSC:

PQ No.	Show/Hide Question	Status of Implementation by ICAO
1.001 LEG CE-1 S	Has the State's rule-making process ensure the timely promulgation of specific operating regulations in compliance with the Annexes?	Not satisfacti...
1.005 LEG CE-1 S	Does the State's rule-making process ensure the timely promulgation of specific operating regulations in compliance with the Annexes?	Not satisfacti...
1.007 LEG CE-2 S	Does the State's rule-making process ensure the timely promulgation of specific operating regulations in compliance with the Annexes?	Not satisfacti...
1.009 LEG CE-2 N/S	Has the State's rule-making process ensure the timely promulgation of specific operating regulations in compliance with the Annexes?	Not satisfacti...
1.011 LEG CE-2 S	Are the primary aviation legislation and the associated operating regulations available to the public?	Satisfactory
1.013 LEG CE-1 S	Does the primary aviation legislation provide for the establishment of a civil aviation organization(s) and the appointment of a Director General (DG)/Chief Executive Officer (CEO)?	Satisfactory
1.015 LEG	Does the State's primary aviation legislation clearly delegate authority to the Director	Satisfactory

Les États qui se préparent pour une ICVM devront effectuer une auto-évaluation à partir de toutes les PQ "non satisfaisantes" dans le(s) domaine(s) d'audit choisi(s).

Choisissez l'option "Non satisfaisante" pour consulter la liste complète des PQ "non satisfaisantes" dans le domaine d'audit choisi.

[Draft Copy](#)

Auto-évaluation à partir des PQ – Audit

Language State **ICAO CMA Training site - Any data updates are temporary and for practice only !!!** Welcome: Futureland NCMC [Logout](#) [Home](#) [Help](#)

State Dashboard Protocol Question (PQ) Finding & Recommendation (F&R) Corrective Action Plan (CAP) User Management

Protocol Question (PQ) / Manage State Self-Assessment

Status of Implementation Audit Area Audit Area Group Critical Element Critical Element Group

SSC PQ/Finding No. [Clear](#)

Status of Implementation by ICAO CMA Protocols as of May 2013

Reply to Protocol Question Status of Implementation CSA Audit Finding SSC

Progress Documented:

Results of State Assessment -- "Read/Write" Draft Copy

Reply to Protocol Question Status of Implementation

Last Modified [Click To View CAP](#)

Remarks:

- 1.The State has NOW amended regulations included aerodromes with the provisions of the LATEST ICAO Annex amendment.
- 2.Procedure ABC revised to verify all regulation(include aerodromes)remain up to date.
- 3.AIP revised and published with all significant differences included aerodromes.

Evidence:

1. www.futureland.com/regulations/aerodromes; Gazette N°1
2. Regulation ABC page 4 (List Effective Page), 5 (Record of rAerodrome regulations page 3, 4 and 5; ...)

PQ No.	Show/Hide Question	Has the State...
1.001 LEG CE-1 S		Has the State developed and implemented procedures for the amendment of its specific regulations taking into consideration ICAO provisions and their amendments?
1.005 LEG CE-1 S		Does the State's primary aviation legislation clearly delegate authority to the Director
1.007 LEG CE-2 S		Does the State's primary aviation legislation clearly delegate authority to the Director
1.009 LEG CE-2 N/S		Does the State's primary aviation legislation clearly delegate authority to the Director
1.011 LEG CE-2 S		Does the State's primary aviation legislation clearly delegate authority to the Director
1.013 LEG CE-1 S		Does the State's primary aviation legislation clearly delegate authority to the Director
1.015 LEG		Does the State's primary aviation legislation clearly delegate authority to the Director

Les États qui se préparent pour un audit devront effectuer une auto-évaluation à partir de toutes les PQ.

Choisissez l'option "All" (Toutes) pour consulter toutes les PQ.



Auto-évaluation à partir des PQ (suite)

Language English State Futureland ICAO CMA Training site - Any data updates are temporary and for practice only !!!

Welcome:Futureland NCMC Logout Home Help

State Dashboard Protocol Question (PQ) Finding & Recommendation (F&R) Corrective Action Plan (CAP) User Management

Protocol Question (PQ) / Manage State Self-Assessment

Status of Implementation All Audit Area LEG Audit Area Group All Critical Element All Critical Element Group All

SSC All New Protocol Status All PQ/Finding No. Clear

PQ No.	Show/Hide Extended Columns Question
1.001 LEG CE-1 S	Has the State promulgated primary aviation legislation (including civil aviation acts, laws, decrees, resolutions, etc.) to enable it to address its obligations as a signatory to the Chicago Convention?
1.005 LEG CE-1 S	Does the primary aviation legislation provide for the introduction/adoption and subsequent promulgation of civil aviation regulations?
1.007 LEG CE-2 S	Does the State's rule-making process ensure the timely promulgation of specific operating regulations in compliance with the Annexes?
1.009 LEG CE-2 N/S	Has the State developed and implemented procedures for the amendment of its specific regulations taking into consideration ICAO provisions and their amendments?
1.011 LEG CE-2 S	Are the primary aviation legislation and the associated operating regulations available to the public?
1.013 LEG CE-1 S	Does the primary aviation legislation provide for the establishment of a civil aviation organization(s) and the appointment of a Director General (DG)/Chief Executive Officer (CEO)?
1.015 LEG	Does the State's primary aviation legislation clearly delegate authority to the Director

1.009
LEG
CE-2
N/S

Has the State developed and implemented procedures for the amendment of its specific regulations taking into consideration ICAO provisions and their amendments?

Sélectionnez la PQ souhaitée.

Status of Implementation by ICAO **CMA Protocols as of May 2013**

Reply to Protocol Question Status of Implementation Not satisfact CSA Audit Finding LEG/01 SSC

Activity CSA Audit Start Date 05/05/2008 End Date 16/05/2008 Report Publication Date 15/06/2008

Description: Translate

The Ministry for Transport of Futureland recently established a general procedure for reviewing ICAO State letters, amending its regulations as needed, and notifying ICAO of differences with the ICAO SARPs. However:

Progress Documented: Translate

Evidence: Translate

Results of State Assessment--"Read/Write" **Draft Copy**

Reply to Protocol Question Yes Status of Implementation Satisfactory

Last Modified 09/07/2013 Click To View CAP

Remarks:

- The State has NOW amended regulations included aerodromes with the provisions of the LATEST ICAO Annex amendment.
- Procedure ABC revised to verify all regulation(include aerodromes)remain up to date.
- AIP revised and published with all significant differences included aerodromes.

Evidence:

- www.futureland.com/regulations/aerodromes; Gazette N°1
- Regulation ABC page 4 (List Effective Page), 5 (Record of rAerodrome regulations page 3, 4 and 5; ouision) and 10(procedure);



Auto-évaluation à partir des PQ (suite)

Language English State Futureland ICAO CMA Training site - Any data updates are temporary and for practice only !!! Welcome:Futureland NCMC Logout Home Help

State Dashboard Protocol Question (PQ) Finding & Recommendation (F&R) Corrective Action Plan (CAP) User Management

Protocol Question (PQ) / Manage State Self-Assessment

Status of Implementation All Audit Area LEG Audit Area Group All Critical Element All Critical Element Group All

SSC All New Protocol Status All PQ/Finding No. Clear

PQ No.	Show/Hide Extended Columns Question
1.001 LEG CE-1 S	Has the State promulgated primary aviation legislation (including civil aviation acts, laws, decrees, resolutions, etc.) to enable it to address its obligations as a signatory to the Chicago Convention?
1.005 LEG CE-1 S	Does the primary aviation legislation provide for the introduction/adoptio and subsequent promulgation of civil aviation regulations?
1.007 LEG CE-2 S	Does the State's rule-making process ensure the timely promulgation of specific operating regulations in compliance with the Annexes?
1.009 LEG CE-2 N/S	Has the State developed and implemented procedures for the amendment of its specific regulations taking into consideration ICAO provisions and their amendments?
1.011 LEG CE-2 S	Are the primary aviation legislation and the associated operating regulations available to the public?
1.013 LEG CE-1 S	Does the primary aviation legislation provide for the establishment of a civil aviation organization(s) and the appointment of a Director General (DG)/Chief Executive Officer (CEO)?
1.015 LEG	Does the State's primary aviation legislation clearly delegate authority to the Director

Status of Implementation by ICAO CMA Protocols as of May 2013

Reply to Protocol Question Status of Implementation Not satisfact CSA Audit Finding LEG/01 SSC

Activity CSA Audit Start Date 05/05/2008 End Date 16/05/2008 Report Publication Date 15/06/2008

Description
 The Ministry of Transport of Futureland recently established a general procedure for reviewing ICAO State letters, amending its regulations as needed, and notifying ICAO of differences with the ICAO SARPs. However:

Progress Documented:
 in the field of operation there has not been a systematic and timely amendment of the

Evidence:

Results of State Assessment--"Read/Write" Draft Copy

En effectuant l'auto-évaluation, référez-vous d'abord aux observations de l'OACI du rapport de la dernière activité.

3. NIP revised and published with all significant differences included aerodromes

Cliquez sur l'icône "Translate" (Traduire) pour obtenir la traduction du texte dans la langue de l'OACI souhaitée.

Traduction du texte

Status of Implementation by ICAO CMA Protocols as of May 2013

Reply to Protocol Question Status of Implementation CSA Audit Finding SSC

Activity Start Date End Date Report Publication Date

Description:

English	Français	Español	Русский	العربية	中文
---------	----------	---------	---------	---------	----

les lettres de l'État de l'OACI, la modification des règlements, au besoin, et d'informer l'OACI des différences avec les SARP de l'OACI. Toutefois: a) dans le domaine des aéroports, il n'ya pas eu une modification systématique et rapide des réglementations nationales pour assurer l'application des dispositions énoncées dans les annexes de l'OACI; b) des différences existantes n'ont pas encore été

The Ministry for Transport of Futureland recently established a general procedure for reviewing ICAO State letters, amending its regulations as needed, and notifying ICAO of differences with the ICAO SARPs. However:

Progress Documented:

Evid

Cliquez pour choisir la langue souhaitée.

Le texte traduit apparaîtra dans l'encadré du haut alors que le texte dans la langue d'origine apparaîtra dans l'encadré du bas.

Utilisez la barre de défilement pour vous déplacer de haut en bas dans les encadrés.

Comment consulter les directives et les références

Language State

ICAO CMA Training site - Any data updates are temporary and for practice only !!!

Welcome:Futureland NCMC [Logout](#) [Home](#) [Help](#)

State Dashboard Protocol Question (PQ) Finding & Recommendation (F&R) Corrective Action Plan (CAP) User Management

Protocol Question (PQ) / Manage State Self-Assessment

Status of Implementation Audit Area Audit Area Group Critical Element Critical Element Group

SSC New Protocol State

PQ No.	Show/Hide Extended Color	Question
1.001 LEG CE-1 S		Has the State promulgated legislation (including laws, decrees, resolutions, orders, etc.) to address its obligations under the Chicago Convention?
1.005 LEG CE-1 S		Does the primary aviation legislation provide for the introduction/adopt subsequent promulgation of other regulations?
1.007 LEG CE-2 S		Does the State's rules and regulations ensure the timely promulgation of specific operating regulations in accordance with the Annexes?
1.009 LEG CE-2 N/S		Has the State developed and implemented...

Review Evidence & Reference

Review Evidence:

- 1) Verify implementation of operations inspectors' procedures as part of the certification process. 2) Sample air operator's training manuals. 3) Sample ACAS training programme and records to confirm implementation.

Reference:

STD A6 Part I App. 2, 2.1.31 GM Doc 8168 Vol I A6 Part III Sec. 3 C3 Att. A

State Assessment--"Read/Write" Draft Copy

Protocol Question Status of Implementation

Modified [Click To View CAP](#)

State has NOW amended regulations included aerodromes with the provisions of the LATEST ICAO amendment.

State ABC revised to verify all regulation (include aerodromes) remain up to date.

Revised and published with all significant differences included aerodromes.

futureland.com/regulations/aerodromes; Gazette N°1
ation ABC page 4 (List Effective Page), 5 (Record of rAerodrome regulations page 3, 4 and 5;
and 10 (procedure):

Pour consulter les directives et les références de la PQ sélectionnée, cliquez deux fois sur le numéro de la PQ (première colonne à votre gauche) et la fenêtre "Review Evidence & References" (Examiner les preuves et références) apparaîtra.

Exemple

n° de PQ	Question
4.223 OPS ÉC-6	L'organisme responsable de l'exploitation technique des aéronefs s'assure-t-il que l'exploitant a établi pour ses pilotes un programme de formation ACAS à bord des aéronefs équipés d'un système ACAS ?

Examiner les preuves :

- 1) Vérifier la mise en œuvre des procédures des inspecteurs de l'exploitation dans le cadre du processus de certification.
- 2) Examiner par échantillonnage les manuels de formation de l'exploitant.
- 3) Examiner par échantillonnage les dossiers et le programme de formation ACAS pour confirmer la mise en œuvre.

Références :

STD: A6, 1^{re} Partie, App. 2, 2.1.31
A6, 3^e Partie, Sect. 3, C3, Suppl. A
GM: Doc 8168, Vol. I

Review Evidence & Reference



Review Evidence:

1) Verify implementation of operations inspectors' procedures as part of the certification process. 2) Sample air operator's training manuals. 3) Sample ACAS training programme and records to confirm implementation.

Reference:

STD A6 Part I App. 2, 2.1.31 GM Doc 8168 Vol I A6 Part III Sec. 3 C3 Att. A

Auto-évaluation à partir des PQ (suite)

Pour les PQ “non satisfaisantes”, examinez le texte qui figure dans les encadrés “Description” et “Progress Documented” (Progrès documentés) dans la barre d’outils “Status of Implementation by ICAO” (Niveau de mise en œuvre établi par l’OACI).

Note.— Les PQ “satisfaisantes” ne contiennent pas ces renseignements.

PQ No.	Show/Hide Extended Columns Question
1.001 LEG CE-1 S	Has the State promulgated primary aviation legislation (including civil aviation acts, laws, decrees, resolutions, etc.) to enable it to address its obligations as a signatory to the Chicago Convention?
1.005 LEG CE-1 S	Does the primary aviation legislation provide for the introduction/adoption and subsequent promulgation of civil aviation regulations?
1.007 LEG CE-2 S	Does the State's rule-making process ensure the timely promulgation of specific operating regulations in compliance with the Annexes?
1.009 LEG CE-2 N/S	Has the State developed and implemented procedures for the amendment of its specific regulations taking into consideration ICAO provisions and their amendments?
1.011 LEG CE-2 S	Are the primary aviation legislation and the associated operating regulations available to the public?
1.013 LEG CE-1 S	Does the primary aviation legislation provide for the establishment of a civil aviation organization(s) and the appointment of a Director General (DG)/Chief Executive Officer (CEO)?
1.015 LEG	Does the State's primary aviation legislation clearly delegate authority to the Director

Status of Implementation by ICAO CMA Protocols as of May 2013

Reply to Protocol Question Status of Implementation CSA Audit Finding SSC

Activity Start Date End Date Report Publication Date

Description:

The Ministry for Transport of Futureland recently established a general procedure for reviewing ICAO State letters, amending its regulations as needed, and notifying ICAO of differences with the ICAO SARPs. However:

in the field of aerodromes, there has not been a systematic and timely amendment of the

Progress Documented:

Evidence:

Results of State Assessment--"Read/Write" Draft Copy

Reply to Protocol Question Status of Implementation

Last Modified [Click To View CAP](#)

Remarks:

- 1.The State has NOW amended regulations included aerodromes with the provisions of the LATEST ICAO Annex amendment.
- 2.Procedure ABC revised to verify all regulation(include aerodromes)remain up to date.
- 3.AIP revised and published with all significant differences included aerodromes.

Evidence:

1. www.futureland.com/regulations/aerodromes; Gazette N°1
2. Regulation ABC page 4 (List Effective Page), 5 (Record of rAerodrome regulations page 3, 4 and 5; (previous) and 10 (procedure):

Comment consulter les CAP

Pour consulter le CAP de la PQ connexe, cliquez sur le lien **“Click To View CAP”** à droite. *OU BIEN*

009 G E-2 S	Has the State developed and implemented procedures for the amendment of its specific regulations taking into consideration ICAO provisions and their amendments?	Evidence: Translate
011 G E-2	Are the primary aviation legislation and the associated operating regulations available to the public?	Results of State Assessment--"Read/Write" Draft Copy <input checked="" type="checkbox"/> Reply to Protocol Question <input type="text" value="Yes"/> Status of Implementation <input type="text" value="Satisfactory"/> Last Modified <input type="text" value="09/07/2013"/> Click To View CAP
013 G E-1	Does the primary aviation legislation provide for the establishment of a civil aviation organization(s) and the appointment of a Director General (DG)/Chief Executive Officer (CEO)?	Remarks: 1.The State has NOW amended regulations included aerodromes with the provisions of the LATEST ICAO Annex amendment. 2.Procedure ABC revised to verify all regulation(include aerodromes)remain up to date. 3.AIP revised and published with all significant differences included aerodromes.
015	Does the State's primary aviation legislation	Evidence: 1. www.futureland.com/regulations/aerodromes; Gazette N°1 2. Regulation ABC page 4 (List Effective Date) 5 (Record of aerodrome regulations page 3, 4 and 5.

Défilez vers le bas de la page pour consulter le CAP dans l'encadré **“Corrective Action Plan”**.

1.019 LEG CE-1 S	If the State has transferred safety oversight tasks and/or responsibilities to a State/regional or supranational organization, is there a legal basis for this transfer?	Attach evidence (e.g. PDF or XPS), limited to 10 files and maximum of 10 MB per file Add amendment.pdf 37,058 bytes Delete reg_Aerodrome.pdf 22,905 bytes Delete approval-page-proced_ABC.pdf 33,475 bytes Delete reg_Aerodrome.pdf 22,905 bytes Delete approval-page-proced_ABC.pdf 33,475 bytes Delete AIP.pdf 13,597 bytes Delete Arrêté N°22MTANAC du 18 mai 2012.pdf 918,039 bytes Delete Essai 1.pdf 5,822 bytes Delete decision_0831.pdf 80,774 bytes Delete Upload File
Page size: <input type="text" value="8"/> Displaying page 1 of 3, items 1 to 8 of 23 Page: <input type="text" value="1"/> of 3		Corrective Action Plan

Auto-évaluation à partir des PQ (suite)

Results of State Assessment--"Read/Write" Draft Copy

Reply to Protocol Question **Yes** Status of Implementation **Satisfactory**

Last Modified 03/02/2013 [Click To View CAP](#)

Remarks:

- CAA-AC
- Inspector
- The Air Operator Certification Manual Chapter 10, and Checklist in Appendix 1, detail the certification process

Evidence:

- CA
- Opera
- The A

Attach ev

Select

Upload

[Appendix](#)

bytes

bytes

Sélectionnez "Oui" ou "Non" à "Reply to Protocol Question" selon que l'État a répondu ou non à la PQ pertinente.

Indiquez le niveau de mise en œuvre établi par l'État pour ladite PQ.

- "Satisfaisant" signifie que l'État a donné suite à toutes les exigences figurant dans les directives de la PQ.
- "Non satisfaisant" s'applique lorsque l'État n'a pas donné suite entièrement à l'une des exigences figurant dans les directives de la PQ.
- "Non applicable" signifie que la PQ n'est pas applicable dans l'État (p. ex. lorsque la PQ est liée à un bureau régional et que l'État n'en a aucun).
- "EN BLANC" signifie que la PQ est indéterminée, normalement lorsqu'il s'agit d'une nouvelle PQ qui n'a pas fait l'objet d'un audit.



Présentation des commentaires

Language English

State Futureland

ICAO CMA Training site - Any data updates are temporary and for practice only !!!

Welcome:Futureland NCMC Logout Home Help

State Dashboard Protocol Question (PQ) Finding & Recommendation (F&R) Corrective Action Plan (CAP) User Management

Protocol Question (PQ) / Manage State Self-Assessment

Status of Implementation All Audit Area LEG Audit Area Group All Critical Element All Critical Element Group All

SSC All New Protocol Status All PQ/Finding No. Clear

Table header: PQ No., Show/Hide Extended Columns, Status of Implementation by ICAO, CMA Protocols as of May 2013

Consultez d'abord les directives figurant dans l'encadré "Review Evidence & References" afin de rédiger vos commentaires dans l'encadré "Remarks" pour expliquer le niveau de mise en œuvre ("Status of implementation").

Dans l'encadré "Remarks", fournissez une phrase qui décrit les progrès de la mise en œuvre de chaque élément énoncé dans l'encadré "Review Evidence & References".

1.001 LEG CE-1 S	
1.005 LEG CE-1 S	
1.007 LEG CE-2 S	
1.009 LEG CE-2 N/S	specific regulations taking into consideration ICAO provisions and their amendments?
1.011 LEG CE-2 S	Are the primary aviation legislation and the associated operating regulations available to the public?
1.013 LEG CE-1 S	Does the primary aviation legislation provide for the establishment of a civil aviation organization(s) and the appointment of a Director General (DG)/Chief Executive Officer (CEO)?
1.015 LEG	Does the State's primary aviation legislation clearly delegate authority to the Director

Results of State Assessment--"Read/Write"

Draft Copy

Reply to Protocol Question Yes Status of Implementation Satisfactory

Last Modified 09/07/2013 Click To View CAP

Remarks:

- 1.The State has NOW amended regulations included aerodromes with the provisions of the LATEST ICAO Annex amendment.
- 2.Procedure ABC revised to verify all regulation(include aerodromes)remain up to date.
- 3.AIP revised and published with all significant differences included aerodromes.

Evidence:

1. www.futureland.com/regulations/aerodromes; Gazette N°1
2. Regulation ABC page 4 (List Effective Page), 5 (Record of rAerodrome regulations page 3, 4 and 5; ...)

Présentation des commentaires (suite)

Voici les points à garder à l'esprit lors de la présentation des commentaires (“**Remarks**”) :

- L'État devrait présenter des commentaires pour expliquer la raison de l'état correspondant à la mise en œuvre (satisfaisant/non satisfaisant/non applicable) de la PQ pertinente.
- Les commentaires devraient répondre, point par point et en une seule phrase, à chacun des éléments correspondants des directives qui figurent dans l'encadré “**Review Evidence & References**”.
- Si les preuves justificatives sont jointes, l'État devrait fournir des références détaillées, telles que le chapitre, la page, le paragraphe, etc.



Présentation des preuves

State Dashboard Protocol Question (PQ) Finding & Recommendation (F&R) Corrective Action Plan (CAP) User Management

Protocol Question (PQ) / Manage State Self-Assessment

Status of Implementation All Audit Area LEG Audit Area Group All Critical Element All Critical Element Group All

SSC All

PQ No.	Description	Status
1.001 LEG CE-1 S		
1.005 LEG CE-1 S		
1.007 LEG CE-2 S		
1.009 LEG CE-2 N/S	Has the State developed and implemented procedures for the amendment of its specific regulations taking into consideration ICAO provisions and their amendments?	
1.011 LEG CE-2 S	Are the primary aviation legislation and the associated operating regulations available to the public?	
1.013 LEG CE-1 S	Does the primary aviation legislation provide for the establishment of a civil aviation organization(s) and the appointment of a Director General (DG)/Chief Executive Officer (CEO)?	
1.015 LEG	Does the State's primary aviation legislation clearly delegate authority to the Director	

Results of State Assessment--"Read/Write" Draft Copy

Reply to Protocol Question Yes Status of Implementation Satisfactory

Last Modified 09/07/2013 Click To View CAP

Remarks:

- 1.The State has NOW amended regulations included aerodromes with the provisions of the LATEST ICAO Annex amendment.
- 2.Procedure ABC revised to verify all regulation(include aerodromes)remain up to date.
- 3.AIP revised and published with all significant differences included aerodromes.

Evidence:

1. www.futureland.com/regulations/aerodromes; Gazette N°1
2. Regulation ABC page 4 (List Effective Page), 5 (Record of rAerodrome regulations page 3, 4 and 5;

Au besoin, fournissez/joignez les preuves qui appuient les commentaires correspondants et les éléments des directives.

Incluez le nom du document et les références spécifiques. Les références aux longs documents devront être détaillées et inclure les chapitres, sections, pages, etc.

Remplir l'auto-évaluation à partir des PQ

Results of State Assessment--"Read/Write" Draft Copy

Reply to Protocol Question Status of Implementation

Last Modified [Click To View CAP](#)

Remarks:

- CAA-AC-OPS050 Contents of an Operations Manual Section 9.3.2(f)
- Inspector guidance is detailed in Operation inspector Manual, chapter 4, section 2
- The Air Operator Certification Manual Chapter 10, and checklist in Appendix 1, detail the certification process

Evidence:

- CAA-AC-OPS050 Contents of an Operations Manual Section 9.3.2(f) includes the CAA requirements.
- Operation inspector manual, chapter 4, section 2
- The Air Operator Certification Manual Chapter 10, and checklist in Appendix 1

Attach evidence

[Manual Chapter 10, and checklist in appendix](#)

[CAA-AC-OPS050_Ops Manual Section 9.3.2 - Copy.pdf 526.056 bytes](#)

Joignez des copies des références pour chaque élément des preuves.

Cliquez sur "Select" pour ouvrir la fenêtre et sélectionnez un dossier pour le télécharger.

Cliquez sur "Upload Files" pour télécharger le dossier.

Jusqu'à ce que l'auto-évaluation soit achevée, sauvegardez votre travail en cours en utilisant le bouton "Save as Draft".

Une fois l'auto-évaluation achevée, cliquez sur "Submit to ICAO" (Envoyez à l'OACI).

Exemple d'une auto-évaluation achevée

Results of State Assessment--"Read/Write" Draft Copy

Reply to Protocol Question Status of Implementation

Last Modified [Click To View CAP](#)

Remarks:

- CAA-AC
- Inspector
- The Air C

Evidence:

- CAA-AC
- Operatio
- The Air C

Attach evidence

[Air Operator Certification Manual Chapter 10, and checklist in appendix 1.pdf](#) 536,056 bytes
[Delete](#)
[CAA-AC-OPS050 Ops Manual Section 9.3.2 - Copy.pdf](#) 536,056 bytes
[Delete](#)
[Ops Inspector manual, Chapter 4, section 2 - Copy.pdf](#) 536,056 bytes
[Delete](#)

Conseils utiles pour réviser/actualiser les commentaires ("Remarks") :

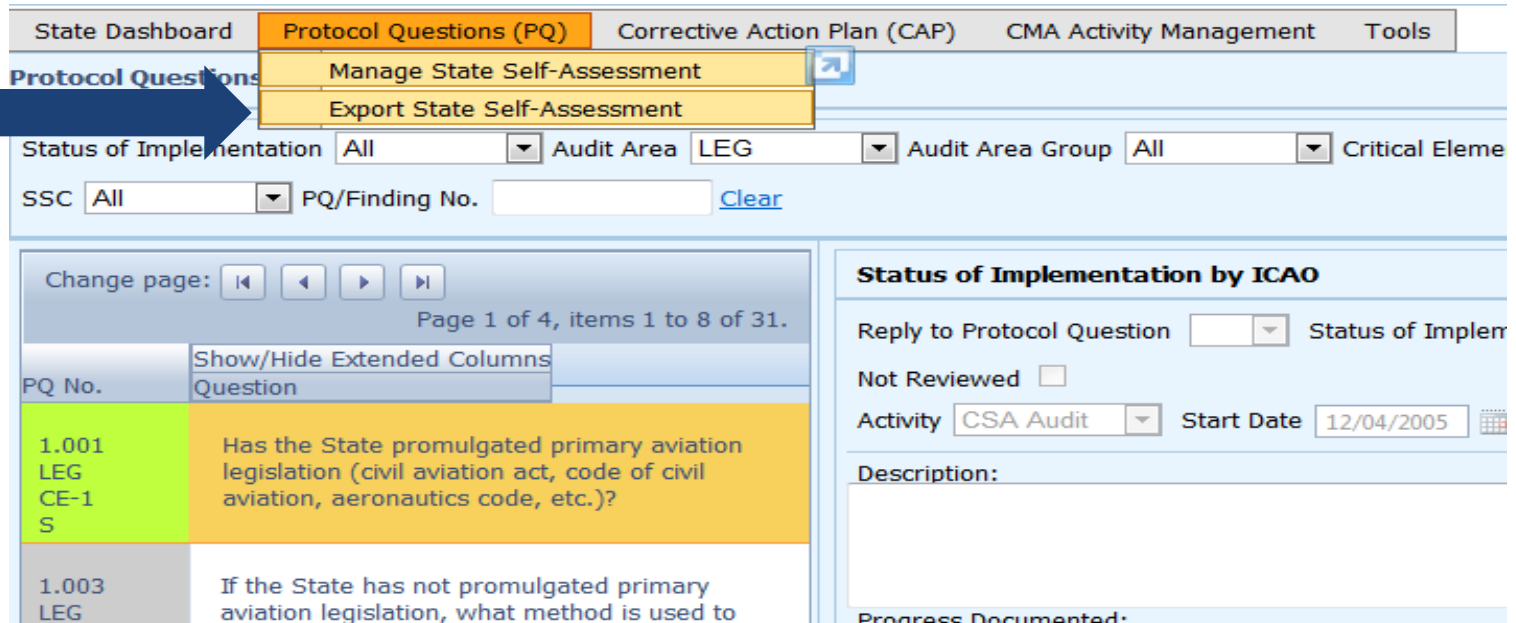
- 1) Copiez le texte d'origine qui figure dans l'encadré "Remarks" et collez-le dans un document en format WORD.
- 2) Révisez/actualisez le texte d'origine selon les besoins.
- 3) Ajoutez la date d'envoi dans l'encadré "Remarks".
- 4) Sous la date, ajoutez le sujet en lettres MAJUSCULES.
- 5) Copiez et collez le texte révisé/actualisé dans l'encadré "Remarks".
- 6) Cliquez sur "Save as Draft" pour sauvegarder votre travail en cours.



Conseils
utiles

Exportation de la liste de vérification de l'auto-évaluation

Sous l'onglet “Protocol Question (PQ)”, défilez vers le bas et sélectionnez “Export State Self-Assessment”(Exportez l'auto-évaluation de l'État).



The screenshot displays the ICAO OACI website interface. The top navigation bar includes tabs for "State Dashboard", "Protocol Questions (PQ)", "Corrective Action Plan (CAP)", "CMA Activity Management", and "Tools". The "Protocol Questions (PQ)" tab is active, and a dropdown menu is open, showing options for "Manage State Self-Assessment" and "Export State Self-Assessment". A blue arrow points to the "Export State Self-Assessment" option. Below the navigation bar, there are filters for "Status of Implementation" (set to "All"), "Audit Area" (set to "LEG"), "Audit Area Group" (set to "All"), and "Critical Elements". There is also a search field for "PQ/Finding No." with a "Clear" button. The main content area shows a table of Protocol Questions (PQ) with columns for "PQ No." and "Question". The first row is highlighted in green and yellow, showing "1.001 LEG CE-1 S" and the question "Has the State promulgated primary aviation legislation (civil aviation act, code of civil aviation, aeronautics code, etc.)?". The second row is highlighted in grey and yellow, showing "1.003 LEG" and the question "If the State has not promulgated primary aviation legislation, what method is used to". To the right of the table, there is a section titled "Status of Implementation by ICAO" with a dropdown for "Reply to Protocol Question", a checkbox for "Not Reviewed", a dropdown for "Activity" (set to "CSA Audit"), and a date field for "Start Date" (set to "12/04/2005").

State Dashboard Protocol Questions (PQ) Corrective Action Plan (CAP) CMA Activity Management Tools

Protocol Questions

Manage State Self-Assessment

Export State Self-Assessment

Status of Implementation All Audit Area LEG Audit Area Group All Critical Elements

SSC All PQ/Finding No. Clear

Change page: Page 1 of 4, items 1 to 8 of 31.

PQ No.	Question
1.001 LEG CE-1 S	Has the State promulgated primary aviation legislation (civil aviation act, code of civil aviation, aeronautics code, etc.)?
1.003 LEG	If the State has not promulgated primary aviation legislation, what method is used to

Status of Implementation by ICAO

Reply to Protocol Question Status of Implern

Not Reviewed

Activity CSA Audit Start Date 12/04/2005

Description:

Progress Documented*



Exportation de la liste de vérification de l'auto-évaluation — “All protocols” (Tous les protocoles)

Pour consulter toutes les PQ, cliquez sur “All Protocols”.

State Dashboard Protocol Questions (PQ) Corrective Action Plan (CAP) CMA Activity Management Tools

Protocol Questions (PQ) / Export State Self-Assessment

**This export feature is utilized for the completion of the protocol questions offline.
The exported file should be not merged or deleted.**

All Protocols Only Not satisfactory Protocols

	Code	Description	Is Locked By State
<input type="checkbox"/>	LEG	primary aviation legislation and civil aviation regulations	<input type="checkbox"/>
<input type="checkbox"/>	ORG	civil aviation organization	<input type="checkbox"/>
<input type="checkbox"/>	PEL	personnel licensing and training	<input type="checkbox"/>
<input type="checkbox"/>	OPS	aircraft operations	<input type="checkbox"/>
<input type="checkbox"/>	AIR	airworthiness of aircraft	<input type="checkbox"/>
<input type="checkbox"/>	AIG	aircraft accident and incident investigation	<input type="checkbox"/>
<input type="checkbox"/>	ANS	air navigation services	<input type="checkbox"/>
<input type="checkbox"/>	AGA	aerodromes and ground aids	<input type="checkbox"/>

Refresh Submit



Exportation de la liste de vérification de l'auto-évaluation — “Only Not Satisfactory Protocols” (Uniquement les protocoles non satisfaisants)

Pour consulter uniquement les PQ “non satisfaisantes”, cliquez sur “Only Not Satisfactory Protocols”.

State Dashboard Protocol Questions (PQ) Corrective Action Plan (CAP) CMA Activity Management Tools

Protocol Questions (PQ) / Export State Self-Assessment

**This export feature is utilized for the completion of the protocol questions offline.
The exported file should be not merged or deleted.**

All Protocols Only Not satisfactory Protocols

	Code	Description	Is Locked By State
<input type="checkbox"/>	LEG	primary aviation legislation and civil aviation regulations	<input type="checkbox"/>
<input type="checkbox"/>	ORG	civil aviation organization	<input type="checkbox"/>
<input type="checkbox"/>	PEL	personnel licensing and training	<input type="checkbox"/>
<input type="checkbox"/>	OPS	aircraft operations	<input type="checkbox"/>
<input type="checkbox"/>	AIR	airworthiness of aircraft	<input type="checkbox"/>
<input type="checkbox"/>	AIG	aircraft accident and incident investigation	<input type="checkbox"/>
<input type="checkbox"/>	ANS	air navigation services	<input type="checkbox"/>
<input type="checkbox"/>	AGA	aerodromes and ground aids	<input type="checkbox"/>

Refresh Submit

Exportation de la liste de vérification de l'auto-évaluation — PQ sélectionnées

Pour consulter les PQ d'un domaine d'audit spécifique (un domaine à la fois), cochez la case à côté du domaine d'audit sélectionné.

State Dashboard Protocol Questions (PQ) Corrective Action Plan (CAP) CMA Activity Management Tools

Protocol Questions (PQ) / Export State Self-Assessment

**This export feature is utilized for the completion of the protocol questions offline.
The exported file should be not merged or deleted.**

All Protocols Only Not satisfactory Protocols

	Code	Description	Is Locked By State
<input type="checkbox"/>	LEG	primary aviation legislation and civil aviation regulations	<input type="checkbox"/>
<input checked="" type="checkbox"/>	ORG	civil aviation organization	<input type="checkbox"/>
<input type="checkbox"/>	PEL	personnel licensing and training	<input type="checkbox"/>
<input type="checkbox"/>	OPS	aircraft operations	<input type="checkbox"/>
<input type="checkbox"/>	AIR	airworthiness of aircraft	<input type="checkbox"/>
<input type="checkbox"/>	AIG	aircraft accident and incident investigation	<input type="checkbox"/>
<input type="checkbox"/>	ANS	air navigation services	<input type="checkbox"/>
<input type="checkbox"/>	AGA	aerodromes and ground aids	<input type="checkbox"/>

Refresh Submit

Exportation de la liste de vérification de l'auto-évaluation (suite)

Une fois la PQ sélectionnée, cliquez sur “**Submit**” pour télécharger le dossier.

State Dashboard Protocol Questions (PQ) Corrective Action Plan (CAP) CMA Activity Management Tools

Protocol Questions (PQ) / Export State Self-Assessment

**This export feature is utilized for the completion of the protocol questions offline.
The exported file should be not merged or deleted.**

All Protocols Only Not satisfactory Protocols

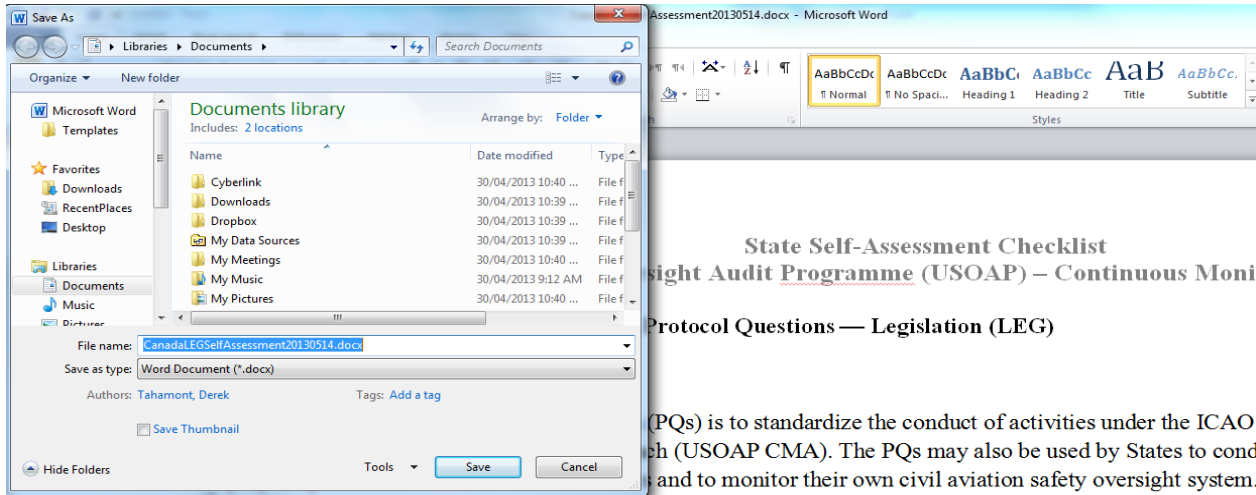
	Code	Description	Is Locked By State
<input type="checkbox"/>	LEG	primary aviation legislation and civil aviation regulations	<input type="checkbox"/>
<input checked="" type="checkbox"/>	ORG	civil aviation organization	<input type="checkbox"/>
<input type="checkbox"/>	PEL	personnel licensing and training	<input type="checkbox"/>
<input type="checkbox"/>	OPS	aircraft operations	<input type="checkbox"/>
<input type="checkbox"/>	AIR	airworthiness of aircraft	<input type="checkbox"/>
<input type="checkbox"/>	AIG	aircraft accident and incident investigation	<input type="checkbox"/>
<input type="checkbox"/>	ANS	air navigation services	<input type="checkbox"/>

Refresh Submit

!!! Attendez quelques secondes pour le téléchargement du dossier, selon la vitesse de la connexion Internet. NE PAS appuyer deux fois sur “**Submit**” (Envoyez).

Exportation de la liste de vérification de l'auto-évaluation (suite)

Sauvegardez le dossier dans le répertoire souhaité prêt à être utilisé.



PQs will be subject to periodic revision by ICAO in order to reflect amendments made to the referenced docu always refer to the latest version of the referenced documents.

When developing the “corrective action plan,” the State should consider all elements of the “not satisfactory”

Exportation de la liste de vérification de l'auto-évaluation (suite)

Protocol Question (PQ) / Export Protocol Self-Assessment Checklist

 The export feature is utilized for the completion of the self-assessment protocol questions offline.

 **Warning:** The Unlock feature should only be used to unlock the self-assessment when the original exported document has been lost or there is no need to import the document back into the OLF. The result of unlocking an exported document causes the exported file to become obsolete and cannot be imported into the OLF.

 The exported document requires Microsoft Word 2010 on a Windows based platform. Please ensure the document remains in its native ".docx" file format when saving. The exported file should not be merged or modified.

 All Protocols Not satisfactory Protocols based on last ICAO activity
 Include SSP Protocols

	Code	Description	Is Locked	Export	Imported User Email
<input checked="" type="checkbox"/>	LEG	Primary aviation legislation and civil aviation regulations	<input type="checkbox"/>		
<input checked="" type="checkbox"/>	ORG	Civil aviation organization	<input checked="" type="checkbox"/> Unlock		
<input checked="" type="checkbox"/>	PEL	Personnel licensing and training	<input checked="" type="checkbox"/> Unlock		
<input checked="" type="checkbox"/>	OPS	Aircraft operations	<input checked="" type="checkbox"/> Unlock		
<input checked="" type="checkbox"/>	AIR	Airworthiness of aircraft	<input checked="" type="checkbox"/> Unlock		
<input checked="" type="checkbox"/>	AIG	Aircraft accident and Incident Investigation	<input checked="" type="checkbox"/> Unlock		
<input checked="" type="checkbox"/>	ANS	Air navigation services	<input checked="" type="checkbox"/> Unlock		
<input checked="" type="checkbox"/>	AGA	Aerodromes and ground aids	<input checked="" type="checkbox"/> Unlock		

“Unlock” (Déverrouillez) les exportations qui ne seront pas ré-importées dans le système.

Refresh

Importation de la liste de vérification de l'auto-évaluation

Sous l'onglet “**Protocol Question (PQ)**”, défilez vers le bas et sélectionnez “**Import Protocol Self-Assessment Checklist**”.

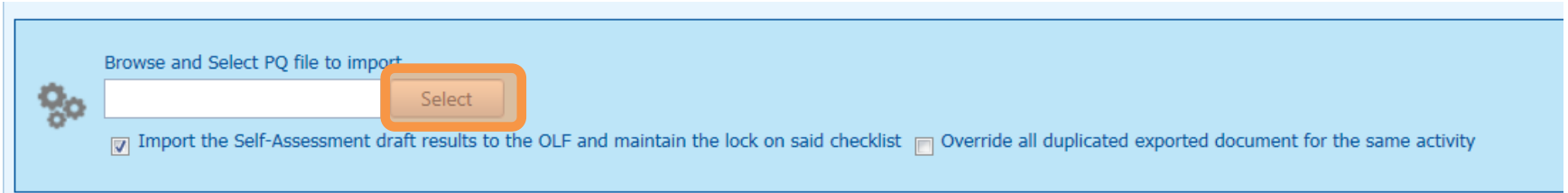
The screenshot shows the OACI IHO interface with the following elements:

- Navigation tabs: State Dashboard, **Protocol Question (PQ)**, Finding & Recommendation (F&R), Corrective Action Plan (CAP), User Management.
- Dropdown menu under Protocol Question (PQ):
 - Manage State Self-Assessment
 - Export Protocol Self-Assessment Checklist
 - Import Protocol Self-Assessment Checklist** (highlighted by a blue arrow)
- Filters: Audit Area Group (All), Critical Element (All).
- Table of Protocol Questions (PQ):

PQ No.	Show/Hide Extended Columns	Question
1.001 LEG CE-1 S		Has the State promulgated primary aviation legislation (civil aviation act, code of civil aviation, aeronautics code, etc.)?
1.003 LEG CE-1 S		If the State has not promulgated primary aviation legislation, what method is used to meet its obligations as a signatory of the Chicago Convention?
1.005		Does the primary aviation legislation provide
- Form titled "Status of Implementation by ICAO" with fields for:
 - Reply to Protocol Question
 - Status of Implementation (Satisfactory)
 - Activity (CSA Audit)
 - Start Date (13/05/2008)
 - End Date (22/05/2008)
 - Description:
 - Progress Documented:
 - Evidence:

Importation de la liste de vérification de l'auto-évaluation (suite)

Cliquez sur **“Select”** pour ouvrir la fenêtre et sélectionnez le dossier à importer.



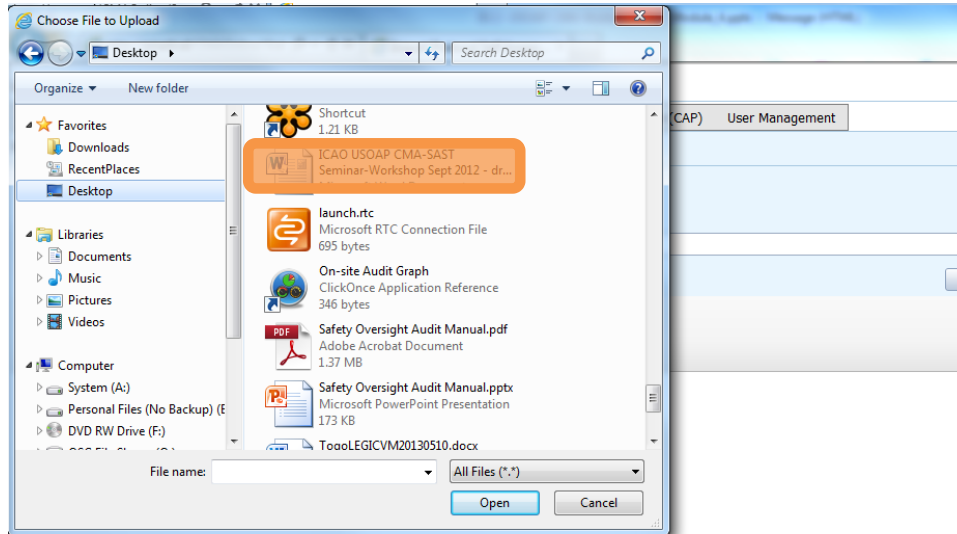
Browse and Select PQ file to import

Select

Import the Self-Assessment draft results to the OLF and maintain the lock on said checklist Override all duplicated exported document for the same activity

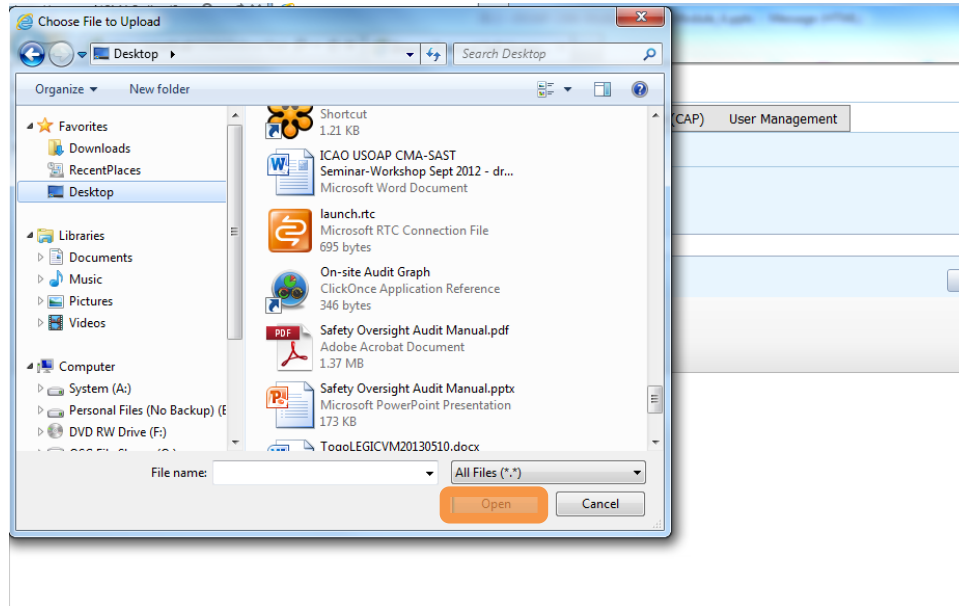
Importation de la liste de vérification de l'auto-évaluation (suite)

Sélectionnez le dossier à importer et fermez la fenêtre.



Importation de la liste de vérification de l'auto-évaluation (suite)

Cliquez sur “Open” pour importer le dossier.



Importation de la liste de vérification de l'auto-évaluation (suite)

Protocol Question (PQ) / Import Protocol Self-Assessment Checklist



The Import feature is utilized to import Self-Assessment protocol questions that have been documented offline, if you select the 'Import the Self-Assessment draft results to the OLF and maintain the lock on said checklist' option, the audit area will be kept locked for future imports.

Only Audit Area marked as 'Is Locked' can be imported.



The exported document should have only been edited using Microsoft Word 2010 on a Windows based platform. Please ensure the document remains in its native ".docx" file format when saving. The exported file should not be merged or modified.

Code	Description	Is Locked
LEG	Primary aviation legislation and civil aviation regulations	<input type="checkbox"/>
ORG	Civil aviation organization	<input type="checkbox"/>
PEL	Personnel licensing and training	<input type="checkbox"/>
OPS	Aircraft operations	<input type="checkbox"/>
AIR	Airworthiness of aircraft	<input type="checkbox"/>
AIG	Aircraft accident and incident investigation	<input type="checkbox"/>
ANS	Air navigation services	<input type="checkbox"/>
AGA	Aerodromes and ground aids	<input type="checkbox"/>

Déverrouillez les dossiers en les important de nouveau dans le système.

Browse and Select PQ file to import



Select

Import the Self-Assessment draft results to the OLF and maintain the lock on said checklist

Override all duplicated exported document for the same activity

Submit

Importation de la liste de vérification de l'auto-évaluation (suite)

Une fois que le nom du dossier apparaît dans le champ “Select”, cliquez sur “**Submit**” (Envoyez).

Browse and Select PQ file to import



ANB Telephone Directory.docx

Select

Import the Self-Assessment draft results to the OLF and maintain the lock on said checklist Override all duplicated exported document for the same activity

Exportation/Importation de la liste de vérification de l'auto-évaluation

Voici les points à garder à l'esprit lors de l'*exportation/importation* des dossiers :

- Si les dossiers exportés sont utilisés uniquement à titre indicatif, assurez-vous de déverrouiller (“Unlock”) le dossier après son exportation.
- N'apportez AUCUNE modification dans la structure du document, indiquez les renseignements UNIQUEMENT dans les espaces prévus.



Toute modification dans la structure du document vous empêchera d'importer de nouveau le document dans l'OLF.

- NE modifiez PAS le nom du document.
- Une fois votre travail terminé, assurez-vous de décocher la case **“Import the Self-Assessment draft results to the OLF and maintain the lock on said checklist”**.



Comment soumettre les CAP

Comment soumettre les CAP

Pourquoi est-ce important pour les États de soumettre des CAP et mises à jour de CAP efficaces ?

- Le protocole d'accord l'exige.
- Cela permet de s'assurer que les États remédient entièrement aux constatations de PQ.
- Les mises à jour de CAP permettent aux États de rendre compte du niveau des progrès réalisés.
- Cela permet à l'OACI de déterminer la prochaine marche à suivre.

Responsabilité de l'État

L'État est tenu de :

- présenter un CAP qui remédie pleinement à la constatation de PQ (voir les “six critères pour élaborer un CAP approprié (PEDSRC) à la diapo n° 44);
- soumettre à l'OACI les progrès réalisés dans la mise en œuvre de chaque CAP ; et
- joindre les preuves pertinentes, une fois le CAP entièrement mis en œuvre.

Responsabilité de l'OACI

L'OACI est tenue de :

- rapporter la situation du CAP présenté (c.-à-d. “le CAP ne répond pas à la constatation”, “le CAP ne répond que partiellement à la constatation”, “le CAP remédie pleinement à la constatation”, etc.) ;
- présenter la situation sur l'examen du CAP (c.-à-d. “non entamé” ou “en cours” ou “complété”) ; et
- vérifier si le CAP complété et présenté répond bien aux trois critères de validation.

Six critères pour élaborer un CAP approprié (“PEDSRC”)

- 1) **Pertinent** : le CAP traite des *questions* et *exigences* relatives à la constatation et à la PQ et l’EC correspondants.
- 2) **Exhaustif** : le CAP est *complet* et inclut *tous les éléments ou aspects* associés à la constatation.
- 3) **Détaillé** : le CAP décrit *pas à pas* le processus de mise en œuvre.
- 4) **Spécifique** : le CAP identifie *qui fera quoi et quand*, et en coordination avec les autres entités, le cas échéant.
- 5) **Réaliste** : en matière de *contenu* et *dates de mise en œuvre*.
- 6) **Cohérent** : en accord avec les *autres CAP* et *l’auto-évaluation de l’État*.

Comment soumettre les CAP (suite)

- Accédez au site web du cadre en ligne (OLF) de l'USOAP CMA par ce lien : www.icao.int/usoap.
- Cliquez sur l'icône "**CAP**".

CAP



Comment soumettre les CAP (suite)

Les États sont tenus de soumettre :

- des CAP efficaces;
- des rapports d'avancement réguliers sur la mise en œuvre des CAP, comme l'exige le protocole d'accord.

Comment soumettre les CAP (suite)

Les États devraient veiller à ce que les CAP soumis :

- donnent suite entièrement aux constatations de PQ; ;
- soient pertinents, clairs, détaillés et exhaustifs ;
- aient des dates prévues de mise en œuvre réalistes ; et
- traitent systématiquement de la mise en œuvre des actions correctrices.

Comment soumettre les CAP (suite)

Language: English State: Futureland

Welcome: Futureland Student [Logout](#) [Home](#) [Help](#)

State Dashboard Protocol Question (PQ) Finding & Recommendation (F&R) **Corrective Action Plan (CAP)** User Management

Corrective Action Plan (CAP) / Manage Corrective Action Plan

View Mode: **Live mode - Pub** Audit Area: LEG

Preview mode - NCMC only

Live mode - Public Clear

List of PQs

PQ No.	Question	Progress Documented
1.009 LEG CE-2 CAP: 33.33% CAP fully addresses the finding.	Has the State established procedures for the amendment of its specific regulations taking into consideration existing ICAO provisions and future amendments to ICAO Annexes?	Progress Documented: in the field of procedures, there has not been a substantive and timely amendment of the
1.025 LEG CE-2 CAP: 33.33% CAP fully addresses the finding.	Has the State established and implemented procedures for identifying and notifying differences, if any, to ICAO?	
1.027 LEG CE-2 CAP: 0% CAP fully addresses the finding.	Does the legislation and/or regulations provide for the issuance of exemptions and has the State established a policy and procedures for their issuance?	
1.055 LEG CE-1 CAP: 100% CAP fully addresses the finding.	Has the State established a policy and procedures for enforcement?	
1.105 LEG CE-3 CAP: 100% CAP fully addresses the finding.	Has the State established official inspectorate staff credentials?	

Submit to ICAO

Corrective Action Plan, Action Items: 31/12/2012

+ Add new record		Step	Proposed Action	Action Office	Evidence Reference	Est. Imp. Date	Rev. Imp. Date	Date of Completion	Progress
Edit	Delete	1	The procedure "National consultation Process for International Regulations" has been revised and approved.	Ministry of Transport	National consultation Process for International Regulations	30/07/2010	31/07/2012	23/10/2008	Completed
Edit	Delete	2	In order to improve understanding and awareness by all persons involved in identifying and reporting	Ministry of Transport	Instruction on National	23/10/2008	23/10/2008		Completed

Examinez le texte figurant dans les encadrés “Description” et “Progress Documented” (Progrès documentés) des PQ pertinentes de l’activité USOAP précédente.

Sélectionnez “Preview mode” (prévisualisation) ou “Live mode” (mode en temps réel).

Comment soumettre les CAP (suite)

Language English State Futureland

Welcome: Futureland Student Logout Home Help

State Dashboard Protocol Question (PQ) Finding & Recommendation (F&R) **Corrective Action Plan (CAP)** User Management

Sélectionnez l'onglet "Corrective Action Plan (CAP)" (Plan d'actions correctrices).

Corrective Action Plan (CAP) / Manage Corrective Action Plan

View Mode Live mode - Pub Audit Area LEG Audit Area Group All

SSC All PQ/Finding No. Clear

List Of Not Satisfactory PQs

Change page: Page 1 of 2, Items 1 to 5 of 8.

PQ No.	Question
1.009 LEG CE-2 CAP: 33,33% CAP fully addresses the finding.	Has the State established procedures for the amendment of its specific regulations taking into consideration existing ICAO provisions and future amendments to ICAO Annexes?
1.025	Has the State established and implemented procedures

Protocol Finding

Reply to Protocol Question Status of Implementation Not satisfact CSA Audit Finding LEG/01 SSC

Activity CSA Audit Start Date 05/05/2008 End Date 16/05/2008 Report Publication Date 15/02/2008

Description:
The Ministry for Transport of Futureland recently established a general procedure for reviewing ICAO

Consultez les directives et les références de la PQ sélectionnée. Cliquez deux fois sur le numéro de la PQ (première colonne à votre gauche) et la fenêtre "Review Evidence & References" (Examiner les preuves et références) apparaîtra.

Review Evidence & Reference

Review Evidence:

- 1) Verify implementation of operations inspectors' procedures as part of the certification process.
- 2) Sample air operator's training manuals.
- 3) Sample ACAS training programme and records to confirm implementation.

Reference:

STD A6 Part I App. 2, 2.1.31 GM Doc 8168 Vol I A6 Part III Sec. 3 C3 Att. A

Submit to ICAO

Corrective Action Plan, Action Items: 31/12/2012

+ Add new record Refresh

	Step	Proposed Action	Action Office	Evidence Reference	Est.Imp.Date	Rev. Imp. Date	Date of Completion	Progress
Edit	Delete	1 The procedure "National consultation Process for International Regulations" has been revised and approved.	Ministry of Transport	National consultation Process for International Regulations	30/07/2010	31/07/2012	23/10/2008	Completed
Edit	Delete	2 In order to improve understanding and awareness by all persons involved in identifying and reporting	Ministry of Transport	Instruction on National	23/10/2008	23/10/2008		Completed

100% CAP fully

Comment soumettre les CAP (suite)

Language English State Futureland Welcome:Futureland Student Logout Home Help

State Dashboard Protocol Question (PQ)

Corrective Action Plan (CAP) / Manage Corro

View Mode Live mode - Pub Audit Area

SSC All PQ/Finding No.

List Of Not Satisfactory PQs

Change page: Show/Hide Extended Columns

PQ No. Question

1.009 LEG CE-2 CAP: 33.33% CAP fully addresses the finding. Has the State established proced amendment of its specific regul consideration existing ICAO pre amendments to ICAO Annexes

1.025 LEG CE-2 CAP: 33.33% CAP fully addresses the finding. Has the State established and consideration existing ICAO pre amendments to ICAO?

1.027 LEG CE-2 CAP: 0% CAP fully addresses the finding. Does the legislation and/or reg issuance of exemptions and has the State established a policy and procedures for their issuance?

1.055 LEG CE-1 CAP: 100% CAP fully addresses the finding. Has the State established a policy and procedures for enforcement?

1.105 LEG CE-3 CAP: 100% CAP fully addresses the finding. Has the State established official inspectorate staff credentials?

Progress Documented:

Corrective Action Plan, Action Items: 31/12/2012

		Step	Proposed Action	Action Office	Evidence Reference	Est.Imp.Date	Rev. Imp. Date	Date of Completion	Progress
Edit	Delete	1	The procedure "National consultation Process for International Regulations" has been revised and approved.	Ministry of Transport	National consultation Process for International Regulations	30/07/2010	31/07/2012	23/10/2008	Completed
Edit	Delete	2	In order to improve understanding and awareness by all persons involved in identifying and reporting	Ministry of Transport	Instruction on National	23/10/2008	23/10/2008		Completed

Présentez une date prévue de mise en œuvre (EID) qui soit réaliste pour chaque étape du CAP.

Indiquez la date d'achèvement lorsque le CAP est complété.

Indiquez le CAP étape par étape, en décrivant de manière claire et concise la mesure et le bureau assigné pour chaque étape .

Comment soumettre les CAP (suite)

Language: English State: Futureland

Welcome: Futureland Student [Logout](#) [Home](#) [Help](#)

State Dashboard Protocol Question (PQ) Finding & Recommendation (FSR) **Corrective Action Plan (CAP)** User Management

Corrective Action Plan (CAP) / Manage Corrective Action Plan

View Mode: Live mode - Pub Audit Area: LEG Audit Area Group: All Critical Element: All CAP Review Result: All CAP Review Status: All

SSC: All PQ/Finding No.: Clear

List Of Not Satisfactory PQs

Change page: Page 1 of 2, Items 1 to 5 of 8.

PQ No.	Question	Progress
1.009 LEG CE-2 CAP: <input checked="" type="checkbox"/> 33.33% CAP fully addresses the finding.	Has the State amendment consider also amendments	
1.025 LEG CE-2 CAP: <input checked="" type="checkbox"/> 33.33% CAP fully addresses the finding.	Has the State for identifying ICAO?	
1.027 LEG CE-2 CAP: <input checked="" type="checkbox"/> 0% CAP fully addresses the finding.	Does the legislation and/or regulations provide for the issuance of exemptions and has the State established a policy and procedures for their issuance?	
1.055 LEG CE-1 CAP: <input checked="" type="checkbox"/> 100% CAP fully addresses the finding.	Has the State established a policy and procedures for enforcement?	
1.105 LEG CE-3 CAP: <input checked="" type="checkbox"/> 100% CAP fully	Has the State established official inspectorate staff credentials?	

Protocol Finding

Reply to Protocol Question: Status of Implementation: Not satisfact CSA Audit Finding: LEG/01 SSC:

Indiquez vos observations relatives au CAP ou à la mise à jour du CAP dans l'encadré "State comments" (Observations de l'État), au besoin. Cet encadré est facultatif.

Corrective Action Plan

Est. Imp. Date: 31/07/2010 Rev. Imp. Date: 31/07/2012 Date Of Completion: 23/10/2008 Progress Status: 33.3% Draft Copy

State Comment (CAP Update from IState): 31/12/2012 [Save As Draft](#) [Click to Update PQ Status or Attach Evidence](#)

[Submit to ICAO](#)

Corrective Action Plan, Action Items: 31/12/2012

+ Add new record		Step	Proposed Action	Action Office	Evidence Reference	Est. Imp. Date	Rev. Imp. Date	Date of Completion	Progress
Edit	Delete	1	The procedure "National consultation Process for International Regulations" has been revised and approved.	Ministry of Transport	National consultation Process for International Regulations	30/07/2010	31/07/2012	23/10/2008	Completed
Edit	Delete	2	In order to improve understanding and awareness by all persons involved in identifying and reporting	Ministry of Transport	Instruction on National	23/10/2008	23/10/2008		Completed

Comment soumettre les CAP (suite)

Language: English State: Futureland

Welcome: Futureland Student [Logout](#) [Home](#) [Help](#)

State Dashboard Protocol Question (PQ) Finding & Recommendation (F&R) **Corrective Action Plan (CAP)** User Management

Corrective Action Plan (CAP) / Manage Corrective Action Plan

View Mode: Live mode - Pub Audit Area: LEG Audit Area: LEG

SSC: All PQ/Finding No. Clear

List Of Not Satisfactory PQs

Change page: Page 1 of 2, items 1 to 5

PQ No.	Question	Description:
1.009 LEG CE-2 CAP: <input checked="" type="checkbox"/> 33.33% CAP fully addresses the finding.	Has the State established procedures for the amendment of its specific regulations taking into consideration existing ICAO provisions and future amendments to ICAO Annexes?	
1.025 LEG	Has the State established and implemented procedures for identifying and notifying differences, if any, to	

Comments by ICAO HQ:
The corrective action plan submitted by the State does not fully addresses this ICAO finding and recommendation. Jerome

Page size: 6 Displaying page 1 of 2, items 1 to 6 of 7
Page: 1 of 2

Self-Assessment ←

Défilez vers le bas de la page et cliquez sur “**Self-Assessment**” (Auto-évaluation) pour accéder à cet encadré (en lecture seule).

Soumettez à l'OACI même si l'action n'est pas menée à bien à 100% pour permettre à l'OACI de suivre les progrès.

Submit to ICAO

Corrective Action Plan, Action Items: 31/12/2012

+ Add new record

		Step	Proposed Action	Action Office	Evidence Reference	Est.Imp.Date	Rev. Imp. Date	Date of Completion	Progress
Edit	Delete	1	The procedure "National consultation Process for International Regulations" has been revised and approved.	Ministry of Transport	National consultation Process for International Regulations	30/07/2010	31/07/2012	23/10/2008	Completed
Edit	Delete	2	In order to improve understanding and awareness by all persons involved in identifying and reporting	Ministry of Transport	Instruction on National	23/10/2008	23/10/2008		Completed

Exemple

Language: English State: Futureland

Welcome: Futureland Student Logout Home Help

State Dashboard Protocol Question (PQ) Finding & Recommendation (F&R) **Corrective Action Plan (CAP)** User Management

Corrective Action Plan (CAP) / Manage Corrective Action Plan

View Mode: Live mode - Pub Audit Area: LEG Audit Area Group: All

SSC: All PQ/Finding No. Clear

List Of Not Satisfactory PQs

PQ No.	Question
1.009	Has the State established procedures for the amendment of its specific regulations taking into consideration existing ICAO provisions and future amendments to ICAO Annexes?
CE-2	
CAP: 33.33%	
CAP fully addresses the finding.	
1.025	Has the State established and implemented procedures regarding transfe...

Exemple
PQ 5.453 (ÉC-8)
 Si les renseignements issus de la surveillance de la fiabilité indiquent un niveau de sécurité dégradé, la DIMV procède-t-elle à une évaluation spéciale ou impose-t-elle des restrictions d'exploitation particulières ?

Directives
 Examiner des exemples de mesures prises.
 Note. — L'état correspondant à une PQ sera automatiquement indiqué comme "Non satisfaisant" lorsqu'aucune supervision des programmes de fiabilité n'est assurée.

Référence
 GM Doc 9760

Submit to ICAO

Rev. Date	Imp. Date	Date of Completion	Progress
0	31/07/2012	23/10/2008	Completed
8	23/10/2008		Completed

Page 2 of 2, items 6 to 8 of 8.

Exemple (suite)

“Description” et “Progress Documented” (Progrès documentés) par l’OACI :
“L’AAC ne procède pas à une évaluation spéciale ou n’impose pas de restrictions d’exploitation particulières si les renseignements issus de la surveillance de la fiabilité indiquent un niveau de sécurité dégradé.”

Progress Documented:

Corrective Action Plan Draft Copy

Est.Imp.Date: 31/07/2010 Rev. Imp. Date: 31/07/2012 Date Of Completion: 23/10/2008 Progress Status: 33.3%

State Comment (CAP update from IStare): 31/12/2012 [Save As Draft](#) [Click to Update PQ Status or Attach Evidence](#)

Corrective Action Plan, Action Items: 31/12/2012 [Submit to ICAO](#)

+ Add new record		Step	Proposed Action	Action Office	Evidence Reference	Est.Imp.Date	Rev. Imp. Date	Date of Completion	Progress
Edit	Delete	1	The procedure "National consultation Process for International Regulations" has been revised and approved.	Ministry of Transport	National consultation Process for International Regulations	30/07/2010	31/07/2012	23/10/2008	Completed
Edit	Delete	2	In order to improve understanding and awareness by all persons involved in identifying and reporting	Ministry of Transport	Instruction on National	23/10/2008	23/10/2008		Completed

Exemple d'un CAP complété

Language: English State: Futureland Welcome: Futureland Student Logout Home Help

State Dashboard Corrective Action Plan

View Mode: SSC All

List Of Not Started

Change page size

PQ No.

1.009 LEG CE-2 CAP: 33.33% CAP fully addresses the finding.

1.025 LEG CE-2 CAP: 33.33% CAP fully addresses the finding.

1.027 LEG CE-2 CAP: 0% CAP fully addresses the finding.

1.055 LEG CE-1 CAP: 100% CAP fully addresses the finding.

1.105 LEG CE-3 CAP: 100% CAP fully addresses the finding.

Plan d'actions correctrices, mesures à prendre : 31/12/2012

Step	Proposed Action	Action Office	Evidence Reference	Est. Imp. Date	Rev. Imp. Date	Date of Completion	Progress
1	Prévoir la participation AIR à toutes les futures réunions des exploitants aériens relatives à la fiabilité.	DIMV		25/6/2013			Complété
2	Recueillir et analyser les rapports existants relatifs à la surveillance de la fiabilité.	DIMV		13/7/2013			Complété
3	Établir un processus pour s'assurer que l'on procède à une évaluation spéciale ou que l'on impose des restrictions d'exploitation dans le cas d'un niveau de sécurité dégradé.	DIMV		11/10/2013			25%
4	Définir les éventuelles restrictions d'exploitation à prendre.	DIMV		11/10/2013			Non débuté

Submit to ICAO

Corrective Action Plan, Action Items: 31/12/2012

+ Add new record

Edit	Delete	Step	Proposed Action	Action Office	Evidence Reference	Est. Imp. Date	Rev. Imp. Date	Date of Completion	Progress
Edit	Delete	1	The procedure "National consultation Process for International Regulations" has been revised and approved.	Ministry of Transport	National consultation Process for International Regulations	30/07/2010	31/07/2012	23/10/2008	Completed
Edit	Delete	2	In order to improve understanding and awareness by all persons involved in identifying and reporting	Ministry of Transport	Instruction on National	23/10/2008	23/10/2008		Completed

Refresh

Comment ajouter de nouveaux CAP

PQ No.	Show/Hide Extended Columns	Question
5.001 AIR CE-2 N/S		Has the State promulgated airworthiness regulations to enable the State to implement the airworthiness-related provisions of ICAO Annexes 6, 7, 8 and 16?
5.003 AIR CE-2 S		Has the State issued a comprehensive and detailed national code of airworthiness or adopted and promulgated the code of another State, containing the full scope and extent of details necessary as the basis for the certification/acceptance of individual aircraft?
5.005 AIR CE-2 N/S		Has the State developed and implemented procedures for the amendment of its enabling regulations and national standards?
5.007 AIR CE-2 N/S		Has the State developed and implemented a procedure for identifying and notifying differences, if any, to ICAO?
5.009 AIR CE-2 N/A		If the State has adopted airworthiness regulations from another State, has it established and implemented a procedure for ensuring that these regulations comply with relevant ICAO Annexes initially and on an ongoing basis subsequent to an Annex amendment or an amendment by the originating State?
5.011 AIR CE-2 S		Are copies of the airworthiness enabling regulations (including directives, orders, circulars, publications, etc.) applicable in the State readily available to the public?

1 – Sélectionnez la PQ liée au CAP à ajouter.

2 – Cliquez sur “Add new record”.

Corrective Action Plan, Action Items:

+ Add new record Refresh

Step	Proposed Action	Action Office	Evidence Reference	Est.Imp.Date	Rev. Imp. Date	Date of Completion	Progress
No records to display.							

Corrective Action Plan Draft Copy

Est.Imp.Date Rev. Imp. Date Date Of Completion Progress Status 0%

State Comment: 16/12/2011 Save As Draft [Click to Update PQ Status or Attach Evidence](#)

Submit to ICAO

Comment ajouter de nouveaux CAP (suite)

Remplissez les champs suivants :

- **Numéro de l'étape** : Un CAP peut contenir plusieurs étapes selon la complexité des mesures à prendre. Pour faciliter l'évaluation et la validation du CAP, chaque mesure doit correspondre à une étape différente.
- **Date prévue de mise en œuvre** : La date prévue de mise en œuvre correspond à la date à laquelle il est prévu que la mesure soit entièrement mise en œuvre.
- **Niveau de progrès réalisés**
- **Le bureau chargé des mesures à prendre** est le bureau responsable de mener à bien cette étape.

Corrective Action Plan, Action Items:

+ Add new record Refresh

Step	Proposed Action	Action Office	Evidence Reference	Est.Imp.Date	Rev. Imp. Date	Date of Completion	Progress
Step Number *				Est, Imp. Date *			Progress Status
Rev. Imp. Date							Not started
Action Office *							
Proposed Action *	<div style="border: 1px solid #ccc; padding: 5px;"><p>Rich text editor toolbar: Undo, Redo, Bold, Italic, Underline, Copy, Paste, Print, Save, Undo, Redo, Bold, Italic, Underline</p></div>						
Evidence Reference:	<div style="border: 1px solid #ccc; padding: 5px;"><p>Rich text editor toolbar: Undo, Redo, Bold, Italic, Underline, Copy, Paste, Print, Save, Undo, Redo, Bold, Italic, Underline</p></div>						

Save As Draft Close

No records to display.

Comment ajouter de nouveaux CAP (suite)

Remplissez les champs suivants :

- **“Proposed Action” (Mesure proposée)** : Assurez-vous de soumettre une mesure proposée pour chaque étape correspondante.
- **“Evidence Reference” (Référence pour la preuve)** : Chaque référence devrait être clairement indiquée (c.-à-d. chapitre, section, paragraphe, etc.).
- Cliquez sur **“Save as draft” (Sauvegarder comme projet)**
- Cliquez sur **“Close” (Fermer)** : Pour accéder à la page précédente et pour ajouter les étapes suivantes.

Corrective Action Plan, Action Items:

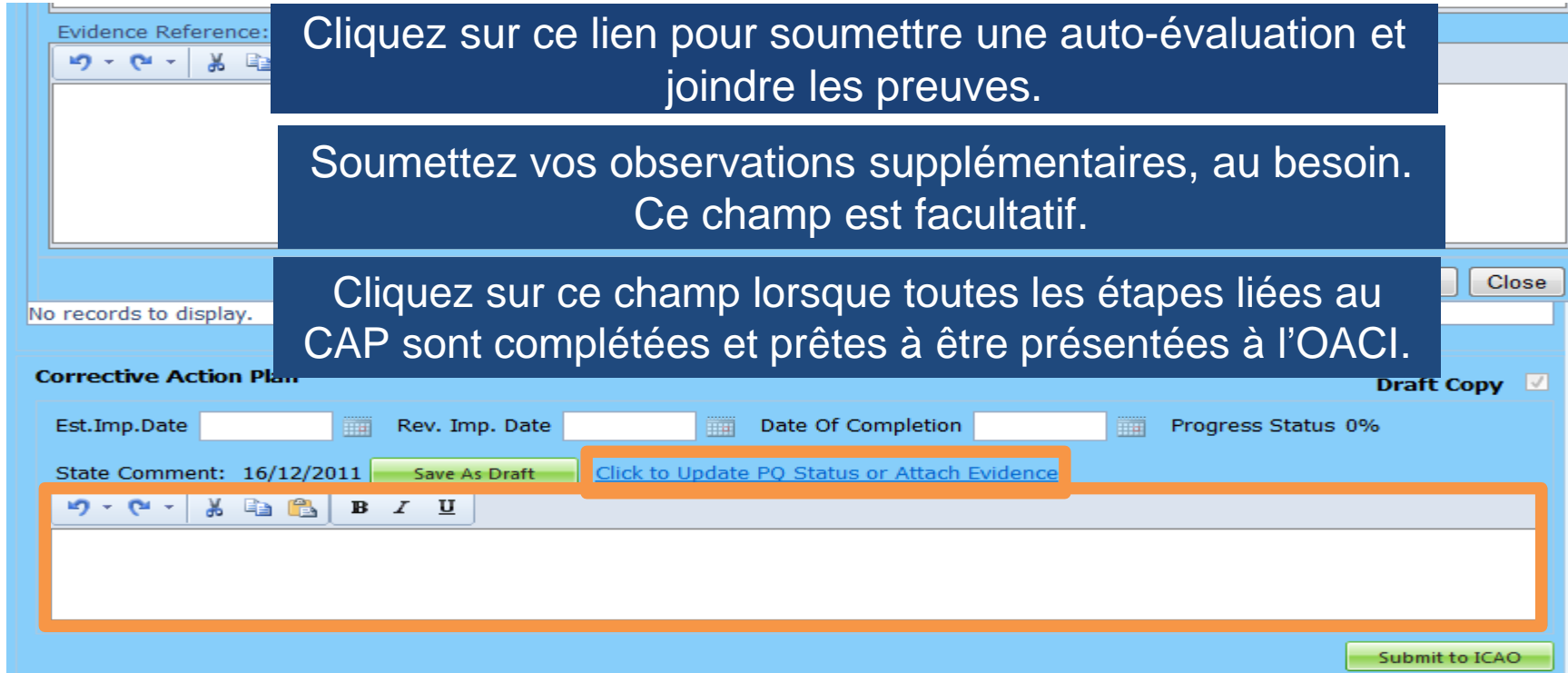
+ Add new record Refresh

Step	Proposed Action	Action Office	Evidence Reference	Est.Imp.Date	Rev. Imp. Date	Date of Completion	Progress
Step Number *	<input type="text"/>	Est, Imp. Date *	<input type="text"/>	<input type="text"/>	Rev. Imp. Date	Date Of Completion	Progress Status
					<input type="text"/>	<input type="text"/>	Not started
Action Office *:							
Proposed Action *:							
<div style="border: 1px solid orange; height: 100px;"></div>							
Evidence Reference:							
<div style="border: 1px solid orange; height: 100px;"></div>							

Save As Draft Close

No records to display.

Comment ajouter de nouveaux CAP (suite)



Evidence Reference:

Cliquez sur ce lien pour soumettre une auto-évaluation et joindre les preuves.

Soumettez vos observations supplémentaires, au besoin. Ce champ est facultatif.

Cliquez sur ce champ lorsque toutes les étapes liées au CAP sont complétées et prêtes à être présentées à l'OACI.

Close

No records to display.

Corrective Action Plan Draft Copy

Est.Imp.Date Rev. Imp. Date Date Of Completion Progress Status 0%

State Comment: 16/12/2011 Save As Draft [Click to Update PQ Status or Attach Evidence](#)

Submit to ICAO



Comment actualiser les CAP

Comment actualiser les CAP

Cliquez sur "Edit" pour réviser ou actualiser les CAP.

- 5.005
AIR
CE-2
CAP:

0%
CAP
fully
addresses
the
finding.

Has the State developed and implemented procedures for the amendment of its e regulations and national standards?
- 5.007
AIR
CE-2
CAP:

0%
CAP
fully
addresses
the
finding.

Has the State developed and implemented a procedure for identifying and notifying differences, if any, to ICAO?
- 5.123
AIR
CE-2
CAP:

0%
CAP
fully
addresses
the
finding.

Do the regulations dictate the type, location and measurements of the nationality, common and registration marks to be used on heavier than air aircraft registered in the State?
- 5.153
AIR
CE-2
CAP:

0%
CAP
fully
addresses
the
finding.

Has the State promulgated regulations for operations-derived equipment which are not part of the type certification of aircraft?

+ Add new record		Step	Proposed Action	Action Office	Evidence Reference	Est.Imp.Date	Rev. Imp. Date	Date of Completion	Progress
Edit	Delete	1	Verify compliance of regulations with Annexes - Action office: SACAA/DOT/ SAWS - Estimated Implementation Date: 31 May 2008 Amend regulations to incorporate the						Not started
<p>amend procedures to ensure effectiveness. - Action office: DOT & Agencies - Estimated Implementation Date: Completed Review liaison with all agencies (SACAA, ATNS, ACSA, SAWS, ICASA, SAR) for the identification and notification of differences and amend procedures to ensure effectiveness. - Action office: DOT & Agencies Estimated Implementation Date: 30 April 2008 Identify regional differences in Regional Supplementary Procedures and incorporate into South African regulations. - Action office: SACAA, ATNS - Estimated Implementation Date: 31 December 2008 Publish existing significant differences with the Annexes in the AIP. - Action office: SACAA - Estimated Implementation Date: Completed</p>									

Sélectionnez la PQ dont le CAP est à réviser ou à actualiser.

Corrective Action Plan Draft Copy

Est.Imp.Date Rev. Imp. Date Date Of Completion Progress Status 0%

State Comment: 16/12/2011 [Save As Draft](#) [Click to Update PQ Status or Attach Evidence](#)

[Submit to ICAO](#)

Comment actualiser les CAP (suite)

Remplissez les champs suivants :

- **Numéro de l'étape** : Un CAP peut contenir plusieurs étapes selon la complexité des mesures à prendre. Pour faciliter l'évaluation et la validation du CAP, chaque mesure doit correspondre à une étape différente.
- **Date révisée de mise en œuvre** : Selon la mise à jour du CAP, si l'EID n'est plus réaliste, une date révisée de mise en œuvre devrait être indiquée.
- **Date d'achèvement** : La date à laquelle la mesure a été menée à bien devrait être indiquée.
- **Niveau de progrès réalisés**
- **Le bureau chargé des mesures à prendre**

Corrective Action Plan, Action Items: 16/12/2011

Step	Proposed Action	Action Office	Evidence Reference	Est. Imp. Date	Rev. Imp. Date	Date of Completion	Progress
1	1. Develop procedure to ensure allocation of aircraft registration like ZS-PAN/SOS etc are not allocated - Action office: GM:AS - Estimated Implementation Date: Completed 2. Amend MOP - Action office: GM:AS - Estimated Implementation Date: Completed 3. MOP Approval - Action office: GM:AS - Estimated Implementation Date: Completed 4. Negotiate allocation of new registration marks iro ZS-PAN - Action office: GM:AS - Estimated Implementation Date: Completed 5. Negotiate allocation of new registration marks iro ZS-SOS - Action office: GM:ASO - Estimated Implementation Date: 3 April 2008						Not started

Step Number * 1 Est. Imp. Date * Rev. Imp. Date Date Of Completion

Progress Status: Not started

Action Office *

1. Develop procedure to ensure allocation of aircraft registration like ZS-PAN/SOS etc are not allocated - Action office: GM:AS - Estimated Implementation Date: Completed 2. Amend MOP - Action office: GM:AS - Estimated Implementation Date: Completed 3. MOP Approval - Action office: GM:AS - Estimated Implementation Date: Completed 4. Negotiate allocation of new registration marks iro ZS-PAN - Action office: GM:AS - Estimated Implementation Date: Completed 5. Negotiate allocation of new registration marks iro ZS-SOS - Action office: GM:ASO - Estimated Implementation Date: 3 April 2008

Evidence Reference:

Save As Draft Close

Corrective Action Plan Draft Copy

Est. Imp. Date Rev. Imp. Date Date Of Completion Progress Status 0%

State Comment: 16/12/2011 Save As Draft Click to Update PQ Status or Attach Evidence

Submit to SCAD

Comment actualiser les CAP (suite)

Remplissez les champs suivants :

- **“Updated Proposed Action” (Mesure proposée actualisée)** : Assurez-vous de présenter une mesure proposée pour chaque étape correspondante.
- **“Evidence Reference” (Référence pour la preuve)** : Chaque référence devrait être précise et détaillée (c.-à-d. chapitre, section, paragraphe, etc.).
- **“Save as draft” (Sauvegarder comme projet)**
- **“Close” (Fermer)** : Pour retourner à la page précédente et réviser les autres étapes.
- **“Submit to ICAO” (Présenter à l’OACI)** : Lorsque toutes les étapes ont été révisées et sont prêtes pour envoi.

Corrective Action Plan, Action Items: 16/12/2011

+ Add new record

	Step	Proposed Action	Action Office	Evidence Reference	Est.Imp.Date	Rev. Imp. Date	Date of Completion	Progress
Edit	Delete 1	1. Develop procedure to ensure allocation of aircraft registration like ZS-PAN/SOS etc are not allocated - Action office: GM:AS - Estimated Implementation Date: Completed 2. Amend MOP - Action office: GM:AS - Estimated Implementation Date: Completed 3. MOP Approval - Action office: GM:AS - Estimated Implementation Date: Completed 4. Negotiate allocation of new registration marks iro ZS-PAN - Action office: GM:AS - Estimated Implementation Date: Completed 5. Negotiate allocation of new registration marks iro ZS-SOS - Action office: GM:ASO - Estimated Implementation Date: 3 April 2008						Not started

Step Number * 1 Est. Imp. Date * Rev. Imp. Date Date Of Completion

Progress Status Not started

Proposed Action *:

1. Develop procedure to ensure allocation of aircraft registration like ZS-PAN/SOS etc are not allocated - Action office: GM:AS - Estimated Implementation Date: Completed 2. Amend MOP - Action office: GM:AS - Estimated Implementation Date: Completed 3. MOP Approval - Action office: GM:AS - Estimated Implementation Date: Completed 4. Negotiate allocation of new registration marks iro ZS-PAN - Action office: GM:AS - Estimated Implementation Date: Completed 5. Negotiate allocation of new registration marks iro ZS-SOS - Action office: GM:ASO - Estimated Implementation Date: 3 April 2008

Evidence Reference:

Note. — Pour joindre les preuves, référez-vous aux instructions décrites précédemment.

Save As Draft Close

Corrective Action Plan

Est.Imp.Date Rev. Imp. Date Date Of Completion Progress Status 0%

Draft Copy

State Comment: 16/12/2011 Save As Draft Click to Update PO Status or Attach Evidence

Submit to ICAO

Bilan

- Comment effectuer une auto-évaluation à partir des PQ.
- Comment soumettre les CAP.
- Comment actualiser les CAP.

Le système évolue.
Le retour d'information et les suggestions des utilisateurs sont essentiels pour l'avancement du système !



ICAO

North American
Central American
and Caribbean
(NACC) Office
Mexico City

South American
(SAM) Office
Lima

ICAO
Headquarters
Montréal

Western and
Central African
(WACAF) Office
Dakar

European and
North Atlantic
(EUR/NAT) Office
Paris

Middle East
(MID) Office
Cairo

Eastern and
Southern African
(ESAF) Office
Nairobi

Asia and Pacific
(APAC) Sub-office
Beijing

Asia and Pacific
(APAC) Office
Bangkok



MERCI