

## APPENDIX – C: AIR TRAFFIC STATISTICS OF THE EUR-SAM CORRIDOR 2017

June 2018

### Scope



- The necessary flight plan information to perform this study is obtained from PALESTRA (ENAIRe's data base):
  - this flight plan data contains initial flight plan information that is updated by radar and controllers with pilot position reports.
  - the air traffic movements reflected in this study are:
    - all traffics using UN741, UN866, UN873 and UN857 whose flight plans contains information about EDUMO, TENPA, IPERA and GUNET waypoints.
    - traffic using the random route.
  - this study does not reflect:
    - traffic not overflying Canaries FIR/UIR.
    - data from east-west flows crossing the EUR-SAM corridor.
    - southbound traffic to/ from Cape Verde.

[enaire.es](http://enaire.es)

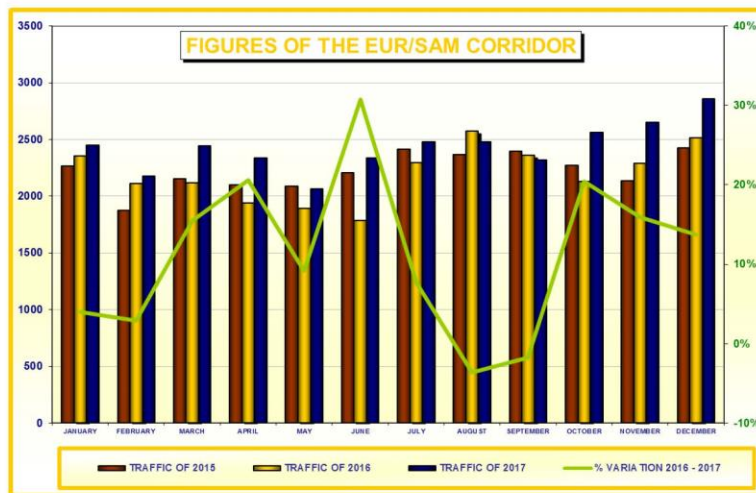
1

## Global figures of the EUR/SAM corridor



MONTH	SOUTHBOUND		NORTHBOUND		TOTAL TRAFFIC IN THE CORRIDOR						% VARIATION	% VARIATION
	2016	2017	2016	2017	2015	DAILY	2016	DAILY	2017	DAILY	2015 - 2016	2016 - 2017
JANUARY	1188	1098	1167	1351	2264	73	2355	76	2449	79	4%	4%
FEBRUARY	918	1012	1195	1163	1874	67	2113	73	2175	78	13%	3%
MARCH	908	1073	1209	1373	2151	69	2117	68	2446	79	-2%	16%
APRIL	916	1088	1021	1247	2099	70	1937	65	2335	78	-8%	21%
MAY	790	1010	1101	1055	2086	67	1891	61	2065	67	-9%	9%
JUNE	852	1025	935	1312	2205	74	1787	62	2337	78	-19%	31%
JULY	1139	1112	1159	1364	2415	78	2298	74	2476	80	-5%	8%
AUGUST	1217	1202	1358	1279	2368	76	2575	83	2481	80	9%	-4%
SEPTEMBER	1104	1121	1254	1196	2393	80	2358	79	2317	77	-1%	-2%
OCTOBER	1013	1339	1114	1222	2269	73	2127	69	2561	83	-6%	20%
NOVEMBER	969	1190	1319	1463	2134	71	2288	76	2653	88	7%	16%
DECEMBER	1144	1337	1369	1522	2423	78	2513	81	2859	92	4%	14%
AVERAGE	1013	1134	1183	1296	2223	73	2197	72	2430	80	-1%	11%

## Global figures of the EUR/SAM corridor

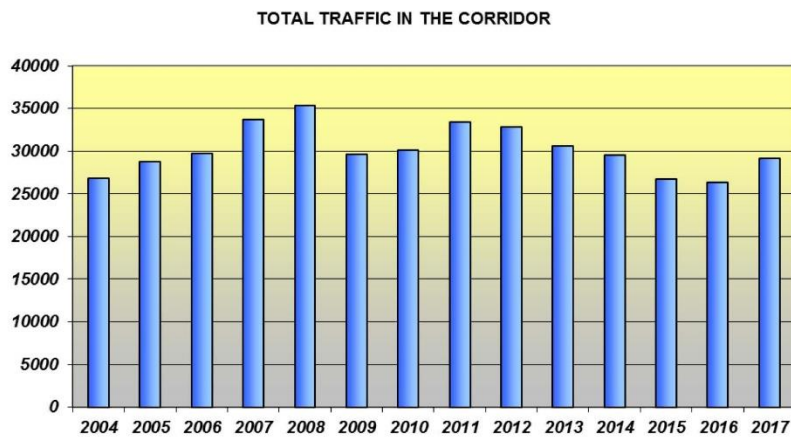


## Number of movements

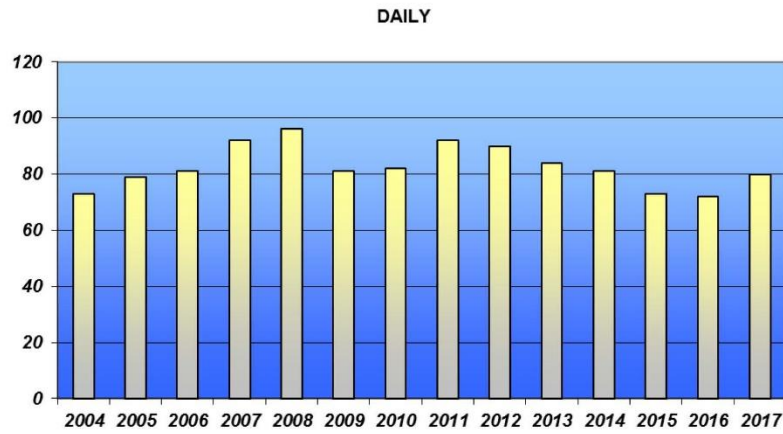


FIGURES OF	SOUTHBOUND	NORTHBOUND	TOTAL TRAFFIC IN THE CORRIDOR	MONTHLY	DAILY
2004	13108	13685	26793	2233	73
2005	14088	14674	28762	2397	79
2006	14651	15036	29687	2474	81
2007	16704	17004	33708	2809	92
2008	17024	18295	35319	2943	96
2009	14256	15366	29622	2468	81
2010	14083	16019	30102	2508	82
2011	15426	17988	33414	2784	92
2012	15245	17624	32869	2739	90
2013	14778	15867	30645	2554	84
2014	13469	16113	29582	2465	81
2015	11613	15068	26681	2223	73
2016	12158	14201	26359	2197	72
2017	13607	15547	29154	2430	80

## Number of movements



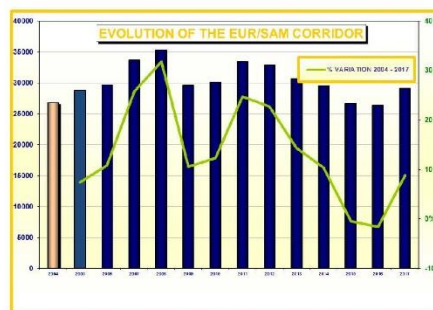
## Average daily traffic



## EUR/SAM corridor evolution



FIGURES OF	SOUTH-BOUND	NORTH-BOUND	TOTAL TRAFFIC IN THE CORRIDOR	% INCREASE FROM 2004
2004	13108	13685	26793	-
2005	14088	14674	28762	7.3%
2006	14651	15036	29687	10.8%
2007	16704	17004	33708	25.8%
2008	17024	18295	35319	31.62%
2009	14256	15368	29622	-10.56%
2010	14083	16019	30102	-12.35%
2011	15426	17908	33414	24.71%
2012	15245	17624	32869	22.68%
2013	14778	15567	30645	14.38%
2014	13469	16113	29582	10.41%
2015	11613	15068	26681	-0.42%
2016	12158	14201	26359	-1.62%
2017	13607	15547	29154	8.81%

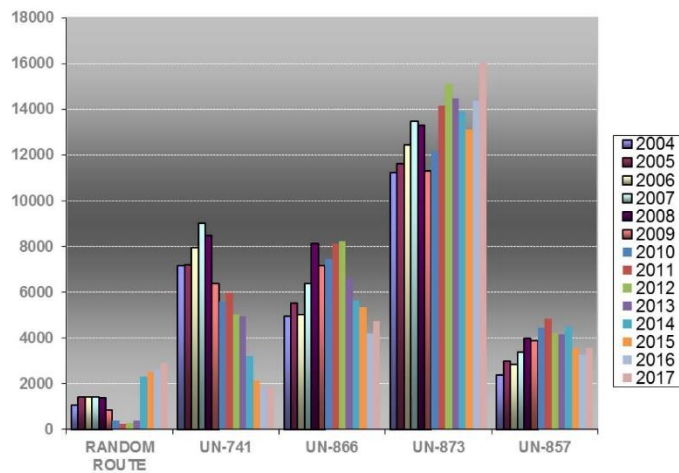


## Traffic per ATS route



	TOTAL	RANDOM ROUTE	UN-741	UN-866	UN-873	UN-857
2004	26793	1052	7179	4960	11219	2383
2005	28762	1413	7220	5534	11609	2986
2006	29687	1429	7935	5037	12442	2844
2007	33708	1424	9039	6389	13484	3372
2008	35319	1399	8486	8113	13314	4007
2009	29622	845	6383	7173	11320	3901
2010	30102	399	5605	7466	12170	4462
2011	33414	261	5999	8129	14172	4853
2012	32869	292	5009	8237	15129	4202
2013	30645	388	4968	6634	14477	4178
2014	29582	2310	3204	5650	13919	4499
2015	26681	2529	2121	5330	13134	3567
2016	26359	2643	1840	4201	14383	3292
2017	29154	2933	1843	4745	16053	3580

## Traffic per ATS route



## Daily traffic

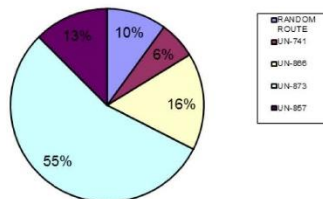


	TOTAL CORREDOR	RANDOM ROUTE		UN-741		UN-866		UN-873		UN-857	
		DAILY	%	DAILY	%	DAILY	%	DAILY	%	DAILY	%
2004	73	3	4%	20	27%	14	19%	31	42%	7	10%
2005	79	4	5%	20	25%	15	19%	32	41%	8	10%
2006	81	4	5%	22	27%	14	17%	34	42%	8	10%
2007	92	4	4%	25	27%	18	20%	37	40%	9	10%
2008	97	4	4%	23	24%	22	23%	36	37%	11	11%
2009	81	2	2%	17	21%	20	25%	31	38%	11	14%
2010	82	1	1%	15	18%	20	24%	33	40%	12	15%
2011	92	1	1%	16	17%	22	24%	39	42%	13	14%
2012	91	1	1%	14	15%	23	25%	42	46%	12	13%
2013	84	1	1%	14	17%	18	21%	40	48%	11	13%
2014	81	6	7%	9	11%	15	19%	38	47%	12	15%
2015	73	7	10%	6	8%	15	21%	36	49%	10	14%
2016	72	7	10%	5	7%	12	17%	39	54%	9	13%
2017	80	8	10%	5	6%	13	16%	44	55%	10	13%

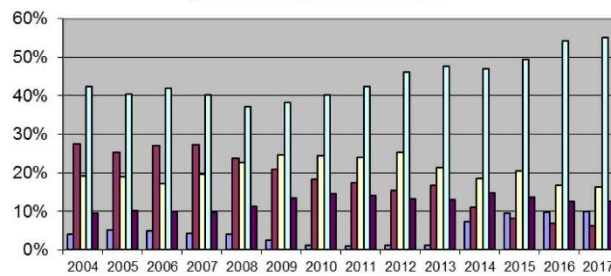
## Daily traffic



% OCCUPANCY 2017



% OCCUPANCY BY YEAR

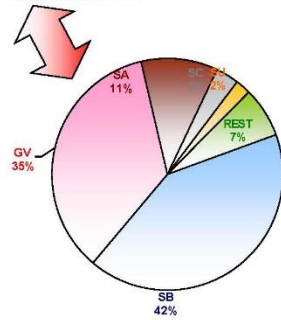


## Main flows



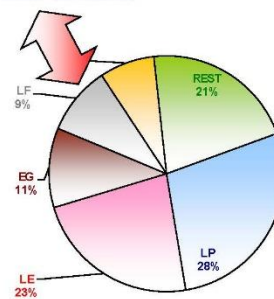
COUNTRY *	2016	2017	VAR %
SB	11296	12158	8%
GV	9195	10254	12%
SA	2716	3133	15%
SC	746	942	26%
SU	587	624	6%
REST	1829	2043	12%

\* ORIGIN / DESTINATION



COUNTRY *	2016	2017	VAR %
LP	6773	8143	20%
LE	5985	6703	12%
EG	2691	3181	18%
LF	2995	2746	-8%
ED	2068	2209	7%
REST	5849	6172	6%

\* ORIGIN / DESTINATION



## Main airports



MAIN AIRPORT: <b>L PPT</b>	ATS ROUTE	SOUTHBOUND	NORTHBOUND	TOTAL	PER ROUTE
% CORRIDOR: <b>0.0000</b>	RANDOM	14	87	101	1%
	UN-741	312		312	4%
	UN-866	1	1477	1478	19%
	UN-873	2938	2223	5161	68%
	UN-857	300	236	536	7%
	TOTAL	3565	4023	7588	

MAIN AIRPORT: <b>L BMD</b>	ATS ROUTE	SOUTHBOUND	NORTHBOUND	TOTAL	PER ROUTE
% CORRIDOR: <b>0.0000</b>	RANDOM	509	435	954	16%
	UN-741	599		599	10%
	UN-866		1194	1194	20%
	UN-873	1174	1326	2500	42%
	UN-857	475	278	754	13%
	TOTAL	2757	3254	6011	

MAIN AIRPORT: <b>SBGR</b>	ATS ROUTE	SOUTHBOUND	NORTHBOUND	TOTAL	PER ROUTE
% CORRIDOR: <b>0.0000</b>	RANDOM	120	161	281	5%
	UN-741	363		363	6%
	UN-866		1474	1474	26%
	UN-873	1479	1544	3023	52%
	UN-857	458	166	624	11%
	TOTAL	2420	3345	5765	



## Main airports



MAIN AIRPORT: <b>GVAG</b>	ATS ROUTE	SOUTHBOUND	NORTHBOUND	TOTAL	USER ROUTE
% CORRIDOR: <b>####</b>	RANDOM	18	29	47	1%
	UN-741	138	3	141	3%
	UN-866	3	308	312	6%
	UN-873	1800	2414	4214	78%
	UN-857	158	527	686	13%
	<b>TOTAL</b>	<b>2118</b>	<b>3282</b>	<b>5400</b>	

MAIN AIRPORT: <b>SEAZ</b>	ATS ROUTE	SOUTHBOUND	NORTHBOUND	TOTAL	USER ROUTE
% CORRIDOR: <b>####</b>	RANDOM	346	312	658	21%
	UN-741	304		304	10%
	UN-866		465	465	15%
	UN-873	648	838	1286	42%
	UN-857	204	161	365	12%
	<b>TOTAL</b>	<b>1502</b>	<b>1576</b>	<b>3078</b>	

MAIN AIRPORT: <b>GVAR</b>	ATS ROUTE	SOUTHBOUND	NORTHBOUND	TOTAL	USER ROUTE
% CORRIDOR: <b>####</b>	RANDOM	18		18	1%
	UN-741		26	26	1%
	UN-866				
	UN-873	1312	579	1891	82%
	UN-857	346	21	367	16%
	<b>TOTAL</b>	<b>1676</b>	<b>606</b>	<b>2302</b>	

## Main airports



MAIN AIRPORT: <b>SEGL</b>	ATS ROUTE	SOUTHBOUND	NORTHBOUND	TOTAL	USER ROUTE
% CORRIDOR: <b>7.90%</b>	RANDOM	42	41	83	4%
	UN-741	77		77	4%
	UN-866		669	669	31%
	UN-873	292	354	646	30%
	UN-857	462	238	690	32%
	<b>TOTAL</b>	<b>873</b>	<b>1194</b>	<b>2165</b>	

MAIN AIRPORT: <b>LEPG</b>	ATS ROUTE	SOUTHBOUND	NORTHBOUND	TOTAL	USER ROUTE
% CORRIDOR: <b>7.43%</b>	RANDOM	54	128	182	9%
	UN-741	243		243	11%
	UN-866		432	432	20%
	UN-873	468	631	1039	49%
	UN-857	166	93	229	11%
	<b>TOTAL</b>	<b>851</b>	<b>1214</b>	<b>2125</b>	

MAIN AIRPORT: <b>GVMP</b>	ATS ROUTE	SOUTHBOUND	NORTHBOUND	TOTAL	USER ROUTE
% CORRIDOR: <b>7.29%</b>	RANDOM				
	UN-741	66	1	67	4%
	UN-866		33	33	2%
	UN-873	723	780	1503	79%
	UN-857	223	67	290	15%
	<b>TOTAL</b>	<b>1012</b>	<b>881</b>	<b>1893</b>	

MAIN AIRPORT: <b>ELXF</b>	ATS ROUTE	SOUTHBOUND	NORTHBOUND	TOTAL	USER ROUTE
% CORRIDOR: <b>6.49%</b>	RANDOM	107	80	187	11%
	UN-741	151		151	9%
	UN-866		276	276	17%
	UN-873	344	385	730	45%
	UN-857	196	87	283	17%
	<b>TOTAL</b>	<b>798</b>	<b>828</b>	<b>1627</b>	



June 2018

## Main city-pair



CITY PAIR	TOTAL	% TOTAL
SBGR <-> LEMD	1772	6.1%
SAEZ <-> LEMD	1622	5.6%
GVNP <-> LPPT	1403	4.8%
SBGR <-> LPPT	951	3.3%
GVAC <-> LPPT	883	3.0%
SBGR <-> LFPG	842	2.9%
SBGL <-> LPPT	674	2.3%
SBKP <-> LPPT	630	2.2%
SBGR <-> EDDF	603	2.1%
SBRF <-> LPPT	603	2.1%
SUMU <-> LEMD	602	2.1%
SLVR <-> LEMD	534	1.8%
GVSU <-> LPPT	499	1.7%
GVAC <-> EHAM	487	1.7%
SBSV <-> LPPT	443	1.5%
SCEL <-> LEMD	429	1.5%
SBGR <-> EGLL	376	1.3%
GVAC <-> EGKK	365	1.3%
SBCF <-> LPPT	341	1.2%
GVAC <-> EGCC	341	1.2%
REST	14754	50.6%

enaire.es

16

June 2018

## Evolution of AO's



AIRCRAFT OPERATOR	2016	2017	VARIATION
TAP	5463	6422	17.6%
IBE	2682	2667	-0.6%
AEA	1684	2010	19.4%
TOM	1338	1689	26.2%
AFR	1917	1528	-20.3%
TAM	813	1350	66.1%
DLH	924	922	-0.2%
BAW	851	848	-0.4%
TUI	671	700	4.3%
KLM	560	657	17.3%
REST	9456	10361	9.6%

enaire.es

17

## 2018 traffic evolution



MONTH	SOUTHBOUND		NORTHBOUND		TOTAL TRAFFIC IN THE CORRIDOR						% VARIATION	
	2017	2018	2017	2018	2016	DAILY	2017	DAILY	2018	DAILY	2016 - 2017	2017 - 2018
JANUARY	1098	1292	1351	1354	2355	76	2449	79	2646	88	4%	8%
FEBRUARY	1012	1157	1163	1412	2113	73	2175	78	2569	92	3%	18%
MARCH	1073	1372	1373	1438	2117	68	2446	79	2810	91	16%	15%
AVERAGE	1134	1274	1296	1401	2197	72	2430	80	2675	90	11%	14%

