



INTERNATIONAL CIVIL AVIATION ORGANIZATION WESTERN AND CENTRAL AFRICA OFFICE

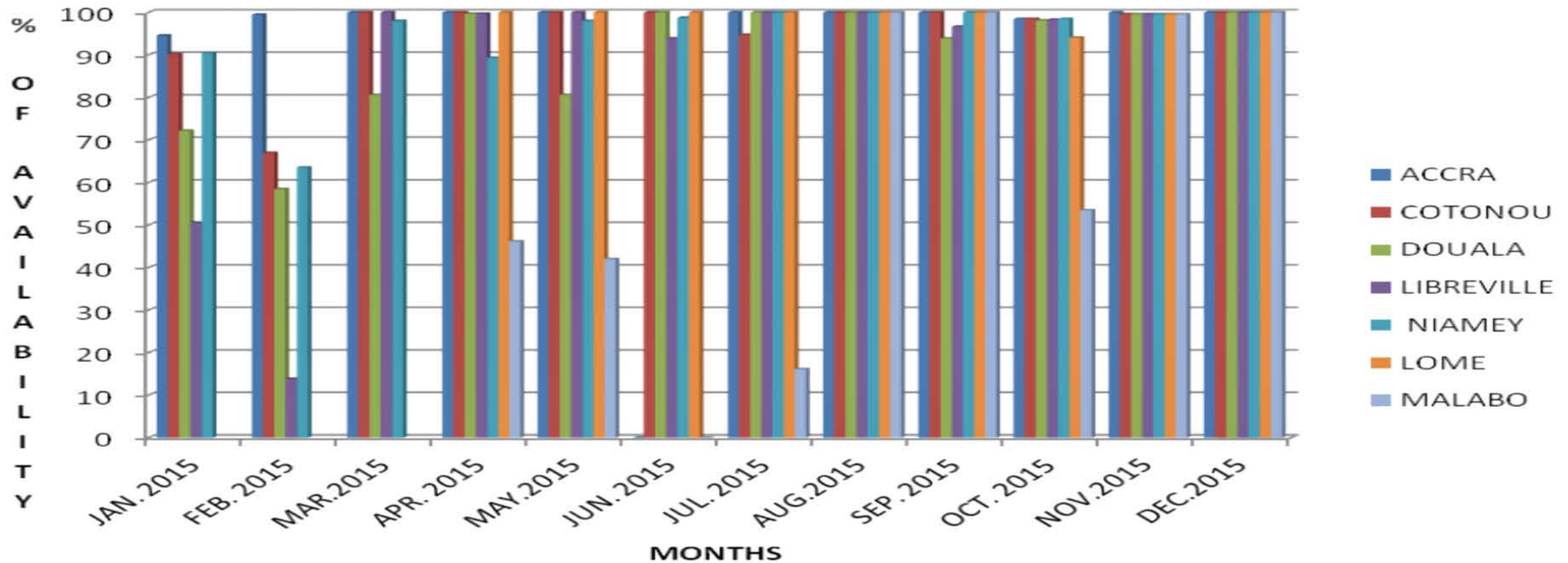
**Twenty-third Meeting of the AFI Satellite Network Management Committee
(SNMC/23)
(Accra, Ghana, 15-19 February 2016)**

**AFTN CIRCUIT AVAILABILITY STATISTICS FOR KANO FLIGHT
INFORMATION REGION**



PLOT

% OF AVAILABILITY OF INTERNATIONAL CIRCUITS PLOTTED AGAINST MONTHS FOR THE YEAR 2015





COMMENT ON THE STATISTICS



- ❖ Accra failed throughout June, 2016. This was due to faulty VSAT MODEM. Which GCAA fixed by the end of June
- ❖ Douala performed below ICAO recommended figure of 97% in Jan., Feb., May and Sept.
- ❖ Malabo circuit started operation in April 2015. Availability was below 97% in April, May, June, July and October. This was due to configuration on the new AMHS in Malabo which has been perfected.



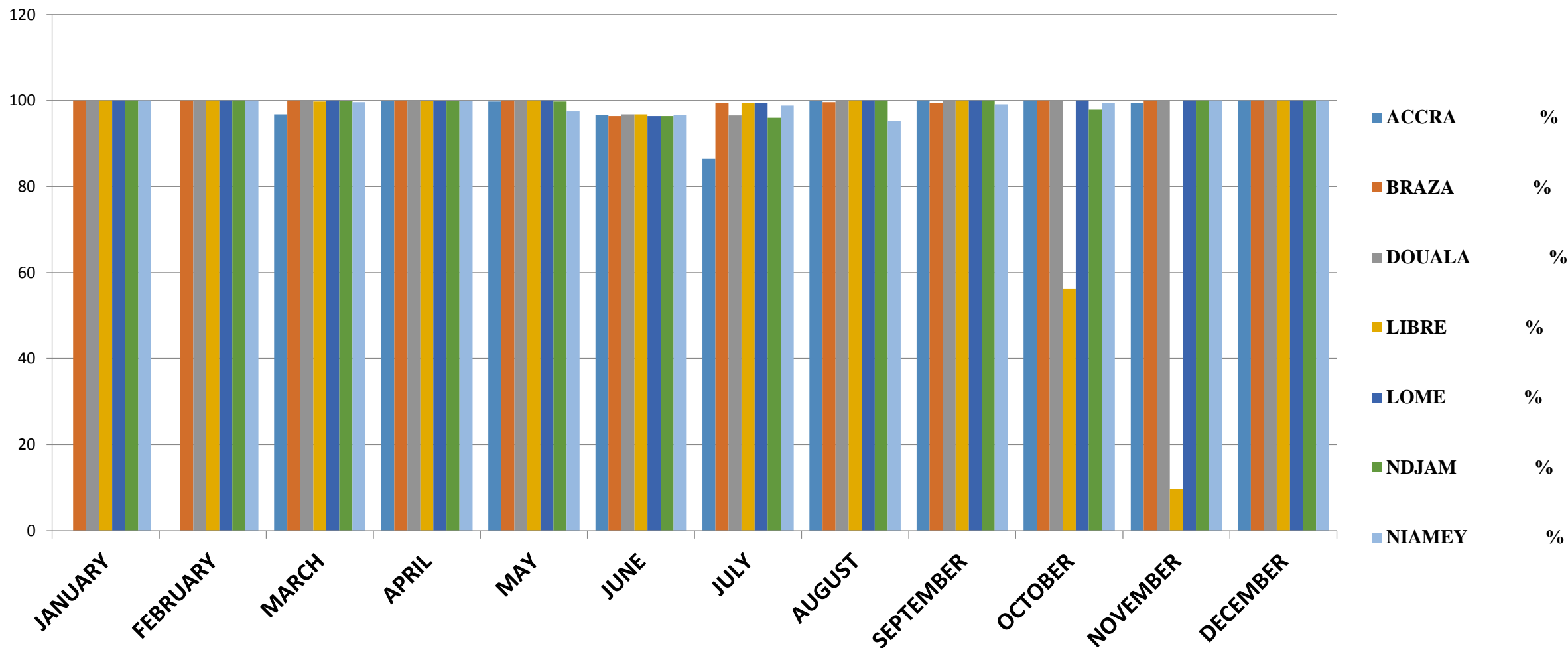
KANO CENTER

AFTN CIRCUIT AVAILABILITY FROM JANUARY TO DECEMBER 2015

stations	Accra	Brazzaville	Doula	Libreville	Lome	Ndjamena	Niamey
Month	%	%	%	%	%	%	%
Jan. '15	0	100	100	100	100	99.19	100
Feb. '15	0	100	100	100	100	100	100
Mar. '15	96.91	100	100	99.73	100	100	99.6
Apr. '15	99.86	100	99.86	99.86	99.86	99.72	99.86
May '15	98.93	99.42	99.2	99.06	99.06	99.06	98.92
June '15	91.81	95.14	94.31	94.03	94.71	95.06	95.14
July '15	93.82	97.31	97.31	97.31	97.31	97.31	97.31
Aug. '15	97.85	97.85	99.85	97.85	97.85	97.85	94.36
Sep. '15	99.58	98.61	99.58	99.58	99.58	99.58	96.25
Oct. '15	100	100	99.86	56.67	100	97.84	100
Nov. '15	99.4	100	100	9.57	100	100	100
Dec. '15	100	100	100	0	100	100	100



GRAPH OF ATS/DS CIRCUIT AVAILABILITY





COMMENT ON THE STATISTICS

- ❖ Accra circuit failed in January and February 2015. This was due to problem on the MOL2P in Kano
- ❖ In June all the circuits recorded percentage availability below ICAO recommended 97%. This was due to failure of the RF unit of the earth station in Kano that lasted for one week.
- ❖ Libreville's availability percentage decreased steadily from October, November and December. This circuit is till not stable.



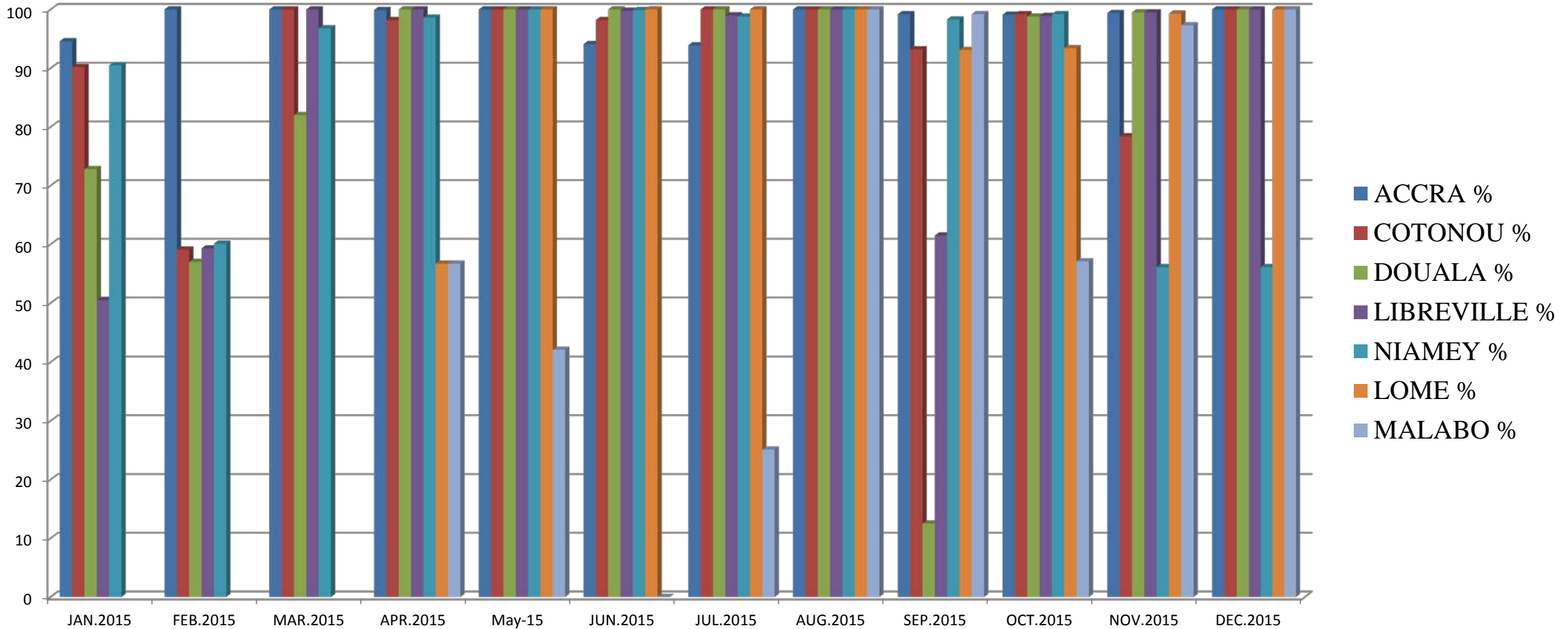
LAGOS CENTER

ATS/DS CIRCUIT AVAILABILITY FROM JANUARY TO DECEMBER 2015.

STATION	ACCRA	COTONOU	DOUALA	LIBREVILLE	NIAMEY	LOME	MALABO
MONTH	%	%	%	%	%	%	%
JAN. 2015	94.6	90.2	72.8	50.5	90.5	N/A	N/A
FEB. 2015	100	59.1	57	59.3	60.1	N/A	N/A
MAR.2015	100	100	82	100	96.8	N/A	N/A
APR. 2015	99.9	98.2	100	100	98.6	56.7	56.7
MAY.2015	100	100	100	100	100	100	42.1
JUN. 2015	94.1	98.2	100	99.8	99.9	100	0
JUL. 2015	93.9	100	100	99	98.8	100	25.1
AUG.2015	100	100	100	100	100	100	100
SEP. 2015	99.2	93.2	12.5	61.5	98.3	93.1	99.2
OCT. 2015	99.1	99.2	98.8	98.9	99.2	93.4	57.1
NOV.2015	99.4	78.4	99.5	99.5	56.1	99.3	97.2
DEC.2015	100	100	100	100	56.1	100	100



PLOT



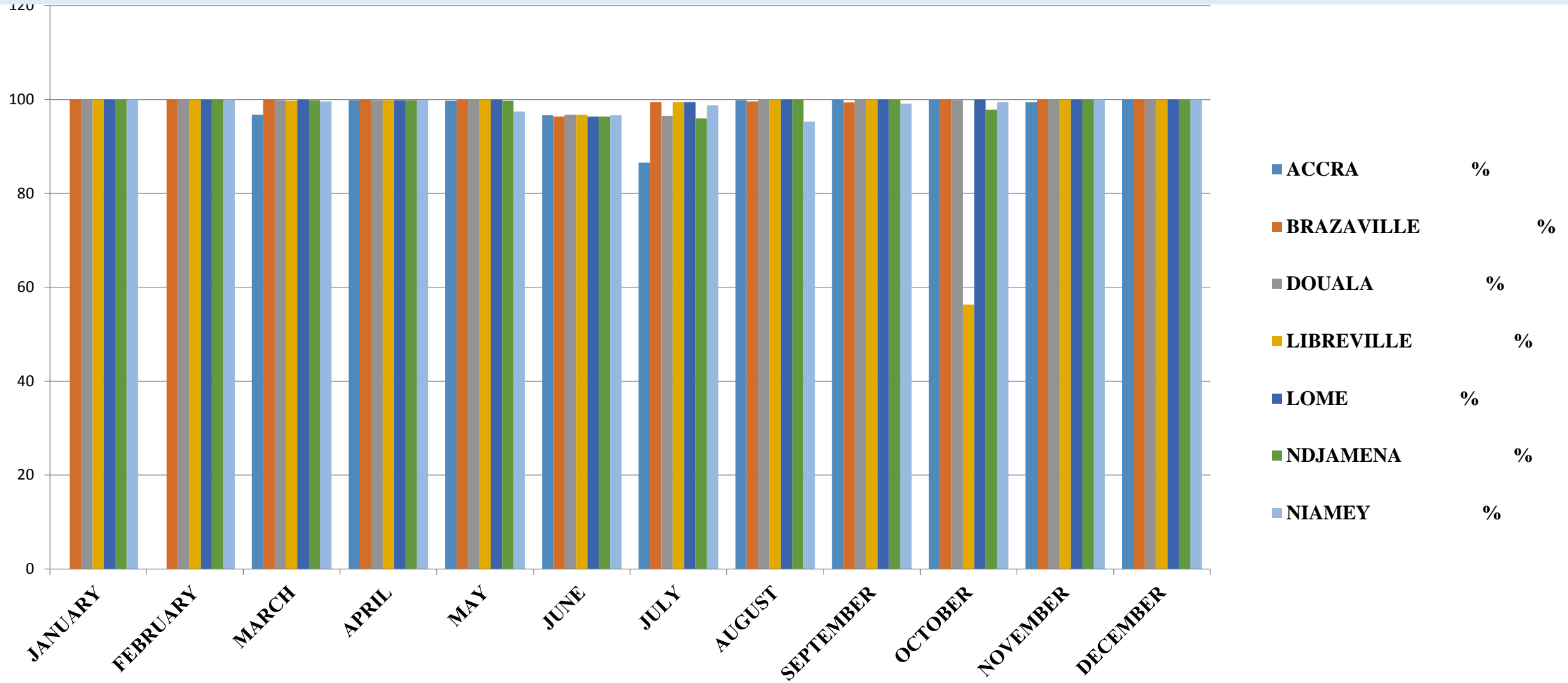


COMMENT ON THE STATISTICS

- ❖ Circuits with extremely low percentage availability are in orange colour in the table
- ❖ Circuits with availability above 70% but below the ICAO recommended figure of 97% are shown in blue on the table.
- ❖ Circuits shown in black have percentage availability above 97%



PLOT



COMMENT ON THE STATISTICS

- ❖ Circuits with extremely low percentage availability are in orange colour in the table
- ❖ Circuits with availability above 70% but below the ICAO recommended figure of 97% are shown in blue in the table.
- ❖ Circuits shown in black have percentage availability above 97%



ACTION BY THE MEETING



The meeting is invited to

- Note the statistical information contained in the paper
- Take actions to resolve problems of circuits that are not working well
- Come up with resolution on how to prevent long period of circuit failure.



THANK YOU FOR YOUR ATTENTION

