



INTERNATIONAL CIVIL AVIATION ORGANIZATION

A United Nations Specialized Agency

PQ export/import



ICAO

Uniting Aviation on
Safety | Security | Environment



STATE OPTIONS

(Select a State) ▼

State Dashboard



SAAQ



Self-Assessment



CC / EFOD



Access Control



CAP



PQ Findings



E-Supplements



Significant Safety Concerns



USOAP Reports



USOAP Live Charts



MOU



Language English

State Futureland

ICAO CMA Tr

State Dashboard **Protocol Question (PQ)** Finding & Recommendation (F&R)

Protocol Question

Activity All

Audit Area Group All Critical Element All

[Manage State Self-Assessment](#) ←
[Export Protocol Self-Assessment Checklist](#)
[Import Protocol Self-Assessment Checklist](#)

PQ No.	Show/Hide Extended Columns Question	Language	Status
1.001 LEG CE-1 S	Has the State promulgated primary aviation legislation (civil aviation act, code of civil aviation, aeronautics code, etc.)?	English Español Français	<input type="checkbox"/> A Descrip <input type="checkbox"/> Tra Progres
1.003 LEG CE-1 N/A	If the State has not promulgated primary aviation legislation, what method is used to meet its obligations as a signatory of the Chicago Convention?	English Español Français	
1.005	Does the primary aviation legislation	English	

Select area then click submit



Language State [Logout Home](#)

State Dashboard **Protocol Questions (PQ)** Corrective Action Plan (CAP) Mandatory Information Requests (MIR) CMA Activity Management User Management Tools Reports Quality Management System Administration

Protocol Questions (PQ) / Export State Self-Assessment

i The auditor export feature is utilized for viewing offline the work done by the state on the state self-assessment protocol questions. The exported file is not intended to be re-imported on the OLF afterwards, the self-assessment work is only performed by the state.

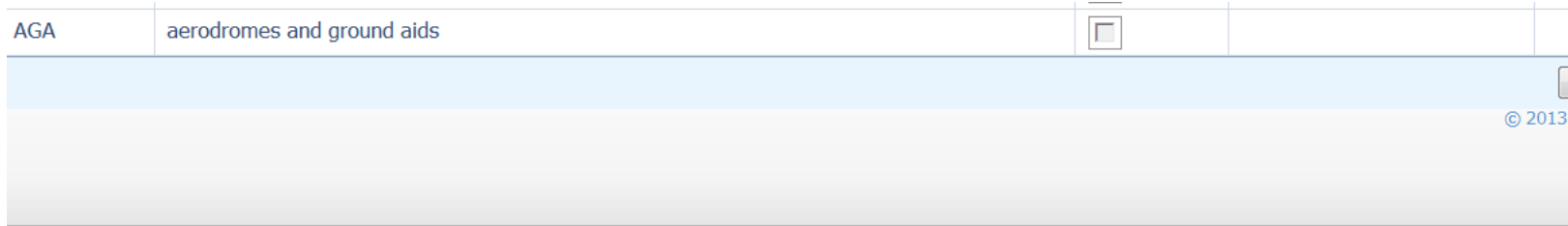
! The exported document requires Microsoft Word 2010 on a Windows based platform. Please ensure the document remains in its native "docx" file format when saving. The exported file should not be merged or modified.

gears All Protocols Not satisfactory Protocols based on last ICAO activity
 Include SSP Protocols

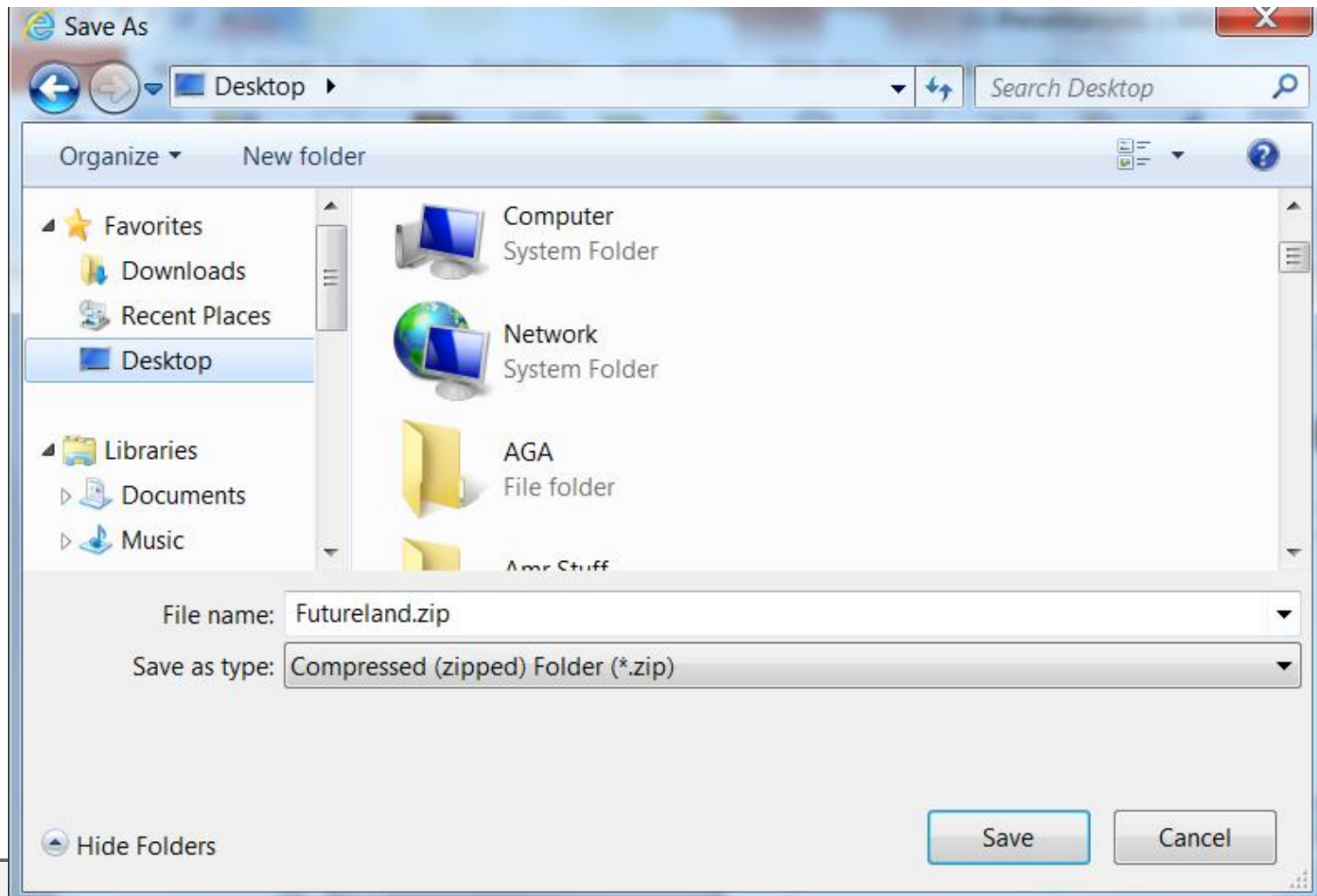
	Code	Description	Is Locked	Export User	Exported User Email	Export Date	Last Imported File Name	Last Imported On	Last Imported By	Imported User Email
<input type="checkbox"/>	LEG	Primary aviation legislation and civil aviation regulations	<input type="checkbox"/>							
<input type="checkbox"/>	ORG	Civil aviation organization	<input type="checkbox"/>							
<input type="checkbox"/>	PEL	Personnel licensing and training	<input type="checkbox"/>							
<input type="checkbox"/>	OPS	Aircraft operations	<input type="checkbox"/>							
<input type="checkbox"/>	AIR	Airworthiness of aircraft	<input type="checkbox"/>							
<input type="checkbox"/>	AIG	Aircraft accident and incident investigation	<input type="checkbox"/>							
<input type="checkbox"/>	ANS	Air navigation services	<input type="checkbox"/>							
<input type="checkbox"/>	AGA	Aerodromes and ground aids	<input type="checkbox"/>							



Save as



Save the document on the drive (outside the zip folder)



Once work complete import back the word document



ICAO CRM Training Site - Any data updates are temporary

Dashboard Protocol Question (PQ) Finding & Recommendation (F&R) Corrective Action Plan (CAP) User Management

Protocol Question

- Manage State Self-Assessment
- Export Protocol Self-Assessment Checklist
- Import Protocol Self-Assessment Checklist

on of the self-assessment protocol questions offline.

The exported document requires Microsoft Word 2010 on a Windows based platform. Please ensure the exported file should not be merged or modified.

All Protocols Not satisfactory Protocols based on last ICAO activity

	Code	Description
<input type="checkbox"/>	LEG	primary aviation legislation and civil aviation regulations
<input type="checkbox"/>	ORG	civil aviation organization
<input type="checkbox"/>	PEL	personnel licensing and training
<input checked="" type="checkbox"/>	OPS	aircraft operations
<input type="checkbox"/>	AIR	airworthiness of aircraft
<input type="checkbox"/>	AIG	aircraft accident and incident investigation
<input type="checkbox"/>	ANS	air navigation services
<input type="checkbox"/>	AGA	aerodromes and ground aids

Click on select to browse the document then press open



Edit view Favorites Tools
WarWheels.Net-Fast Attac... Suggested Sites Web Slice Gallery Free Hotmail

language English State Futureland
ICAO CMA Training site - Any data updates are temporary and for practice
State Dashboard Protocol Question (PQ) Finding & Recommendation (F&R) Corrective Action Plan (CAP) User Management Reports

Protocol Question (PQ) / Import Protocol Self-Assessment Checklist

	Code	Description
<input type="checkbox"/>	LEG	primary aviation
<input type="checkbox"/>	ORG	civil aviation org
<input type="checkbox"/>	PEL	personnel licens
<input type="checkbox"/>	OPS	aircraft operati
<input type="checkbox"/>	AIR	airworthiness o
<input type="checkbox"/>	AIG	aircraft accident
<input type="checkbox"/>	ANS	air navigation s
<input type="checkbox"/>	AGA	aerodromes and

Choose File to Upload
Desktop
Organize New folder
Favorites Downloads Recent Places Desktop
Libraries Documents Music Pictures Videos
Computer
Libraries System Folder
Beg, Wajahat System Folder
Computer System Folder
Network System Folder
AADB AADB Release 2 Checklist
File name: All Files (*.*)
Open Cancel

The Import feature is utilized to import Self-Assessment Checklist. When you click on 'Import Protocol Self-Assessment Checklist' option, the audit area will be kept locked.

Only Audit Area marked as 'Is Locked' can be imported.

The exported document should have only been used for reference. The exported file should not be merged or modified.

Browse and Select PQ file to import

Select

Import the Self-Assessment draft results to the OLF and maintain the lock on said checklist

Once loaded, select the area, uncheck the “lock” option and click on submit



State Dashboard Protocol Question (PQ) Finding & Recommendation (F&R) Corrective Action Plan (CAP) Mandatory Information Requests (MIR) Reports

Protocol Question (PQ) Manage State Self-Assessment Export Protocol Self-Assessment Checklist Import Protocol Self-Assessment Checklist

The Import feature is utilized to import Self-Assessment protocol questions that have been documented offline, if you select the 'Import the Self-Assessment draft results to the OLF and maintain the lock on said checklist' option, the audit area will be kept locked for future imports.
Only Audit Area marked as 'Is Locked' can be imported.

The exported document should have only been edited using Microsoft Word 2010 on a Windows based platform. Please ensure the document remains in its native "docx" file format when saving. The exported file should not be merged or modified.

Code	Description	Is Locked	Export	Export Date	Last Imported On	Last Imported By
LEG	Primary aviation legislation and civil aviation regulations	<input type="checkbox"/>				
ORG	Civil aviation organization	<input type="checkbox"/>				
PEL	Personnel licensing and training	<input type="checkbox"/>				
OPS	Aircraft operations	<input type="checkbox"/>				
AIR	Airworthiness of aircraft	<input type="checkbox"/>				
AIG	Aircraft accident and incident investigation	<input type="checkbox"/>				
ANS	Air navigation services	<input type="checkbox"/>				
AGA	Aerodromes and ground aids	<input type="checkbox"/>				

Browse and Select PQ file to import

Import the Self-Assessment draft results to the OLF and maintain the lock on said checklist Override all duplicated exported document for the same activity

Submit