



**Agenda Item 5: Assessment of operational requirements to decide on the implementation of improvements to communication, navigation and surveillance (CNS) capabilities for en-route and terminal area operations**

**FOLLOW-UP ON ACTIVITIES OF PROJECT AIR NAVIGATION SYSTEMS  
IN SUPPORT OF PBN**

(Presented by the Secretariat)

**SUMMARY**

This working paper presents the status of implementation of the activities under Project “Air Navigation Systems in support of PBN”.

**REFERENCES**

- SAM/IG/7 meeting report (Lima, Peru, 23-27 May 2011);
- SAM/IG/8 meeting report (Lima, Peru, 10-14 October 2011);
- SAM/IG/9 meeting report (Lima, Peru, 14-18 May 2012);
- Sixth Coordination Meeting of Project RLA/06/901 (Lima, Peru, 19-22 October 2010); and
- Twelfth Air Navigation Conference (Montreal, Canada, 19-30 November 2012).

**1. Introduction**

1.1

1.2 In order to support PBN in the SAM Region, the SAM/IG has been working on the following tasks:

- a) Drafting of a practical guide for the implementation of GBAS systems;
- b) Analysis of DME/DME coverage in support of PBN procedures; and
- c) Implementation of a RAIM availability prediction service.

1.3 The aforementioned tasks are contemplated in Project A2 – *Air navigation systems in support of PBN* of the GREPECAS PBN Programme, as shown in **Appendix A** to this working paper.

**2. Discussion**

**Drafting of a practical guide for the implementation of GBAS systems**

2.1 The practical guide for the implementation of GBAS systems was presented at the SAM/IG/8 meeting. The meeting considered that the aforementioned guide was a preliminary document and that it should include a series of details concerning the impact of the ionosphere on GPS systems supporting GBAS. The SAM/IG/9 meeting was presented with the required information, which was included in the guiding document, as shown in **Appendix B** to this working paper.

### **Analysis of DME/DME coverage to support PBN procedures**

2.2 The analysis of DME/DME coverage to support en-route PBN procedures (RNAV 5) was presented and reviewed at the SAM/IG/7 meeting. The coverage analysis was prepared using the EMACS tool and the results were delivered in a KMZ file, which permits the display of DME/DME coverage over the geographical map of the SAM Region through Google Earth.

2.3 The SAM/IG/8 meeting then revised the DME/DME analysis in light of updated DME information for the Region. The States of the Region must report any domestic changes in DME condition so that the DME coverage study for the Region may be updated (*Conclusion SAM/IG/7-6 - Updating of the DME/DME study*).

### **Implementation of a RAIM availability prediction service**

2.4 The SAM/IG/8 meeting reviewed and approved the technical specifications document for the implementation of a RAIM availability prediction service. The sixth meeting of the Coordination Committee of Project RLA/06/901 (RCC/6), upon analysing the technical specifications, felt that the implementation should be done with the support of Project RLA/06/901. In this regard, the meeting approved an amendment to the project to include the RAIM prediction service. States were requested to review, sign and send the project document to the ICAO Regional Office.

2.5 Regarding the technical specifications for the RAIM availability prediction service, the RCC/6 meeting considered that a web-based teleconference or a meeting was necessary to do a final revision of the technical specifications.

2.6 A teleconference was conducted on 22 February 2012, during which some changes were introduced to the technical specifications. Following the teleconference, other comments were received. Based on comments received from Argentina, Brazil, Chile and Venezuela, the technical specifications document underwent a final revision, and was then sent to the ICAO technical cooperation section on the first week of April 2013 to begin the bidding process.

### **Aspects concerning the Global Navigation Satellite System**

2.7 The Twelfth Air Navigation Conference (AN-Conf/12), upon addressing the issue of the global navigation satellite system, formulated several recommendations for consideration by the States when defining their strategic navigation plans and incorporating new operations.

2.8 These recommendations include Recommendation 6/6 – *Use of multiple constellations*, recommending States to consider in their planning the use of multiple constellations in the short and medium term; Recommendation 6/8 – *Plans to mitigate the vulnerability of the global navigation satellite system*, recommending States to manage the spectrum efficiently, report any interference occurrences to ICAO, and, as a matter of priority, maintain the DMEs and ILS to mitigate GNSS-related issues.

2.9 It also formulated Recommendation 6/9 – *Information about the ionosphere and space meteorological conditions for the implementation of the satellite navigation system*, recommending States to apply a collaborative approach to the solution of ionosphere issues.

2.10 Recommendation 6/10 – *Rationalising ground navigation aids*, was also formulated to encourage States to rational

2.11 use ground navigation aids when planning for the implementation of performance-based navigation. **Appendix C** to this working paper contains the aforementioned recommendations of AN-Conf/12.

### **Alignment with ASBU**

2.12 The deliverables of Project A2- *Air navigation systems in support of PBN*, are in line with the elements of modules B-065 – *Optimisation of approach procedures, including vertical guidance*, B0-10 – *Improved operations through improved en-route paths*; B0-105 – *Meteorological information in support of improved efficiency and safety*; and B0-20 – *Improved flexibility and efficiency in climb profiles — Continuous climb operations (CCO)*.

### **3. Suggested action**

3.1 The Meeting is invited to:

- a) Take note of the information presented herein;
- b) Analyse the information presented in section 2 of this working paper; y
- c) Address any other related issues that it may deem appropriate.

-----

## APPENDIX A

## PROJECT ON AIR NAVIGATION SYSTEMS IN SUPPORT OF PBN

SAM Region	PROJECT DESCRIPTION (DP)	DP N° A2	
Programme	Title of the Project	Start	End
PBN (Programme coordinator: TBD)	Air navigation systems in support of PBN <i>Project coordinator: Alexandre Luiz Dutra Bastos (Brazil)</i> Experts contributing to the project: <i>Alessander Santoro, Andre Jansen, Fabio Augusto Andrade (Brazil), Paulo Vila and Tomas Macedo (Peru) and the SAM/IG PBN Group</i>	January 2011	May 2013
Objective	Develop guides, conduct analyses, and implement services in support of PBN implementation in the SAM Region		
Scope	Support to PBN implementation in the SAM Region, which initially involves: <ul style="list-style-type: none"> <li>• Practical GBAS system implementation guide</li> <li>• Analysis of DME/DME coverage to support PBN procedures</li> <li>• Implementation of a RAIM availability prediction service</li> </ul>		
Metrics	<ul style="list-style-type: none"> <li>• Drafting of a practical GBAS system implementation guide</li> <li>• DME/DME coverage in the SAM Region</li> <li>• Availability of a RAM availability prediction service</li> </ul>		
Strategy	<ul style="list-style-type: none"> <li>• All tasks will be executed by experts nominated by SAM States and organisations participating in project <i>Air navigation systems in support of PBN</i> under the management of the project coordinator and under the supervision of the programme coordinator. Communications amongst project members, and between the project and programme coordinators shall be done via teleconference and the Internet. Likewise, the programme and project coordinators, as well as the contributing experts can meet during SAM/IG meetings.</li> <li>• Once the studies are completed, the results will be sent to the ICAO programme coordinator in the form of a final consolidated document for analysis, revision and approval of the GREPECAS PPRC.</li> </ul>		
Goals	<ul style="list-style-type: none"> <li>• Guide for the implementation of a GBAS system for October 2011.</li> <li>• DME/DME coverage assessment to support PBN procedures for May 2011.</li> <li>• RAIM prediction availability service for the SAM Region implemented by May 2013.</li> </ul>		

<b>Rationale</b>	<ul style="list-style-type: none"> <li>The implementation of PBN procedures for approach, terminal, and en-route operations requires the implementation of air navigation systems, services, and infrastructure studies, such as the installation of DMEs to support DME/DME navigation required in case of GNSS failure, the RAIM availability prediction service that will allow the user to know RAIM availability for en-route, terminal, and approach operations, and the implementation of GBAS systems to support precision landing procedures.</li> <li>This project contributes to the implementation of SAM PFFs CNS 03, ATM 01, ATM 02, and ATM 03 of the <i>SAM Performance-Based Navigation System Implementation Plan (SAM PBIP)</i></li> </ul>
<b>Related projects</b>	<ul style="list-style-type: none"> <li>Implementation of PBN operational aspects</li> </ul>

<b>Project Deliverables</b>	<b>Relationship with the regional performance-based plan (PFF) and ASBU Modules</b>	<b>Responsible Party</b>	<b>Status of Implementation <sup>1</sup></b>	<b>Date of Delivery</b>	<b>Comments</b>
<i>Develop a practical guide for the implementation of the GBAS system</i>					
Practical guide for the implementation of GBAS systems	SAM PFF CNS 03 B0-65	Alessander Santoro (Brazil)		October 2012	The initial material for the practical guide on the implementation of GNSS systems was presented at the SAM/IG/8 meeting
<i>Analyse the DME/DME and GNSS infrastructure and coverage required to support PBN implementation</i>					
Analysis of the DME/DME and GNSS infrastructure required to support the implementation of PBN implementation in the SAM Region	SAM PFF CNS 03 SAM PFF ATM/01 ATM/02 ATM/03 B0-65, B0-10, B0-05 & B0-20	Fabio Augusto Andrade and Andre Jansen (Brazil) Paulo Vilas and Tomas Macedo (Peru)		Completed-Study of coverage supporting RNAV5 (SAM/IG/8, October 2011)	A <i>DME/DME coverage study</i> was presented to, and reviewed by the SAM/IG/7 meeting (Lima, Peru, 23-27 May 2011). The coverage study was conducted using the EMACS tool and the result was KMZ file showing DME/DME coverage over the geographical map of the SAM Region through Google Earth. The study supports only RNAV/5 procedures.
<i>Development of guidelines on the use and availability of GNSS service forecast/validation tools</i>					

<sup>1</sup>

**Grey** – Task not started yet  
**Green** – Activity being implemented as scheduled  
**Yellow** – Activity started with some delay, but expected to be implemented on time  
**Red** – Activity not implemented on time; mitigation measures are required

Project Deliverables	Relationship with the regional performance-based plan (PFF) and ASBU Modules	Responsible Party	Status of Implementation <sup>1</sup>	Date of Delivery	Comments
Implementation of a RAIM availability prediction service	SAM PFF CNS 03 SAM PFF ATM/01 ATM/02 ATM/03 B0-65, B0-10, B0-05 & B0-20	Project coordinator SAM/IG PBN Group		May 2013	Corresponding technical specifications have been drafted as result of an initial study on the implementation of a RAIM availability prediction service (SAM/IG/8, 10-14 October 2011). The bidding process is expected to start at the end of May 2013, with the aim of having the application implemented by the end of the last quarter of 2013.
Monitor activities for the implementation of air navigation systems in support of PBN		ICAO		January 2011 – May 2013	
Resources needed	Implementation of the RAIM availability prediction service				

**APPENDIX B**



**INTERNATIONAL CIVIL AVIATION ORGANIZATION**

**GUIDE FOR GROUND BASED AUGMENTATION  
SYSTEM IMPLEMENTATION**

**May 2013**

## **Foreword**

The Ground Based Augmentation System (GBAS) is being developed and implemented in several countries and a large amount of information is being generated. This guide intends to be a basis for countries interested in implementation of GBAS.

Considering the continuous development of GBAS, this manual should be considered a living document to be constantly updated.

Comments are well appreciated and should be addressed to [icaosam@icao.int](mailto:icaosam@icao.int).



## TABLE OF CONTENTS

1	Introduction .....	4
2	Global Navigation Satellite System (GNSS) .....	6
2.1	Core Satellite Constellations .....	6
2.1.1	Global Positioning System (GPS) .....	6
2.1.2	Globalnaya Navigatsionnaya Sputnikovaya Sistema (GLONASS) .....	7
2.2	GNSS Receivers .....	8
2.3	Augmentation Systems .....	8
2.3.1	Aircraft-Based Augmentation System (ABAS) .....	9
2.3.2	Ground-Based Regional Augmentation System (GRAS) .....	10
2.3.3	Satellite-Based Augmentation System (SBAS) .....	10
3	Ground Based Augmentation System (GBAS) .....	11
3.1	General description .....	11
3.2	Benefits of GBAS .....	13
3.2.1	Reduction of critical and sensitive areas .....	13
3.2.2	Curved approach .....	13
3.2.3	Positioning service .....	13
3.2.4	Provision of service in several runways at the same airport .....	14
3.2.5	Provision of several approach glide angles and displaced threshold .....	14
3.2.6	Guided missed approach .....	14
3.2.7	Adjacent airports use .....	14
3.3	GBAS basic technical information .....	14
3.3.1	Data content .....	16
3.3.1.1	Type 1 message .....	16
3.3.1.2	Type 2 message .....	17
3.3.1.3	Type 4 message .....	17
3.3.2	Channel number .....	18
3.3.3	GBAS receiver .....	18
3.3.4	Siting considerations .....	19
3.3.5	Frequency interference issues .....	20
3.3.6	Influence of the Ionosphere .....	20
3.4	Development of GBAS .....	22
3.4.1	International GBAS Working Group (IGWG) .....	22
3.4.2	GBAS station manufacturers .....	23
3.4.3	GBAS receiver manufacturers .....	23
3.4.4	GBAS in aircraft manufacturers .....	23
3.5	Considerations for GBAS implementation .....	23
3.5.1	Implementation Planning .....	23
3.5.2	Analysis of ionosphere impact on GBAS .....	24
3.5.3	Personnel Training .....	26
3.5.4	GBAS ground station acquisition and installation .....	26
3.5.5	Certification and operational approvals .....	26
4	List of acronyms .....	28
5	List of references in the document .....	30
6	List of reference documents .....	31

## **Guide for Ground Based Augmentation System Implementation**

### **1 Introduction**

All navigation and approach aids (NAVAIDs) must meet the requirements of accuracy, continuity, availability and integrity specified to each phase of flight.

As the air traffic flow increased, the conventional NAVAIDs were not able to provide the flexibility in airspace to absorb this growth fitting the needs of the requirements referred so above.

The development, initially by the United States, of a global system providing positioning and timing services allowed the introduction of an alternative to those conventional NAVAIDs with the possibility of using new concepts in air navigation capable of satisfying the new needs of the aeronautical community.

As the development of new concepts and systems occurred, the International Civil Aviation Organization (ICAO) introduced the Global Navigation Satellite System (GNSS), which allows navigation in all phases of flight and precision approach and, according to Volume 1 of Annex 10 to the Convention on International Civil Aviation (from here on referred to as Annex 10, vol.1), is comprised by:

- Global Positioning System (GPS) that provides the Standard Positioning System (SPS);
- Global Navigation Satellite System (GLONASS) that provides the Channel of Standard Accuracy (CSA) navigation signal;
- Aircraft-based augmentation system (ABAS);
- Ground-based augmentation system (GBAS);
- Ground-based regional augmentation system (GRAS); and
- Aircraft GNSS receivers.

The list above presents position generation systems (the core constellations), receivers (with these two groups always present in navigation), and augmentation systems, which will be present when the core constellations cannot support alone the requirements for the phase of flight.

Typical operation	Accuracy horizontal 95%	Accuracy vertical 95%	Integrity	Time-to-alert	Continuity	Availability
En-route	3.7 km (2.0 NM)	N/A	$1 - 1 \times 10^{-7}/h$	5 min	$1 - 1 \times 10^{-4}/h$ to $1 - 1 \times 10^{-5}/h$	0.99 to 0.99999
En-route, Terminal	0.74 km (0.4 NM)	N/A	$1 - 1 \times 10^{-7}/h$	15 s	$1 - 1 \times 10^{-4}/h$ to $1 - 1 \times 10^{-5}/h$	0.99 to 0.99999
Initial approach, Intermediate approach, Non-precision approach (NPA), Departure	220 m (720 ft)	N/A	$1 - 1 \times 10^{-7}/h$	10 s	$1 - 1 \times 10^{-4}/h$ to $1 - 1 \times 10^{-5}/h$	0.99 to 0.99999
Approach operations with vertical guidance (APV-I)	16.0 m (52 ft)	20 m (66 ft)	$1 - 2 \times 10^{-7}$ in any approach	10 s	$1 - 8 \times 10^{-6}$ per 15 s	0.99 to 0.99999
Approach operations with vertical guidance (APV-II)	16.0 m (52 ft)	8.0 m (26 ft)	$1 - 2 \times 10^{-7}$ in any approach	6 s	$1 - 8 \times 10^{-6}$ per 15 s	0.99 to 0.99999
Category I precision approach	16.0 m (52 ft)	6.0 m to 4.0 m (20 ft to 13 ft)	$1 - 2 \times 10^{-7}$ in any approach	6 s	$1 - 8 \times 10^{-6}$ per 15 s	0.99 to 0.99999

**Table 1 – Signal-in-space performance requirements (Annex 10, vol. 1, table 3.7.2.4-1)**

## **2 Global Navigation Satellite System (GNSS)**

As was briefly presented in the introduction, GNSS comprises the core constellations (GPS and GLONASS), ABAS, GBAS, GRAS and GNSS receivers.

In order to increase the understanding of GBAS and put it into the GNSS context, it is important to describe the other components of the system.

### ***2.1 Core Satellite Constellations***

This is, together with the receivers, the basic part of the GNSS. According to Annex 10, two core satellite constellations have Standards and Recommended Practices (SARPs) incorporated: the GPS from United States of America and the GLONASS from the Russian Federation. There are two other constellations under development: GALILEO (European) and COMPASS (Chinese).

GPS and GLONASS have the capability to provide accurate position and time information worldwide. The accuracy provided by both systems meets aviation requirements for en-route through non-precision approach, but not the requirements for precision approach.

Considering the importance of the core constellations, according to Annex 10, any change in the SARPs that requires the replacement or update of GNSS equipment require a six-year advance notice. Similarly, a six-year notice is required of a core or augmentation system provider who plans to terminate the service provided.

#### **2.1.1 Global Positioning System (GPS)**

GPS is a satellite-based radio navigation system which uses precise range measurements from GPS satellites to determine position and time anywhere in the world. The system is operated for the government of the United States by the United States Air Force. In 1994, the United States offered the GPS standard positioning service (SPS) to support the needs of international civil aviation and the ICAO Council accepted the offer.

The design of GPS space segment is comprised of 24 satellites in six orbital planes. The satellites operate in near-circular 20 200 km (10 900 NM) orbits at an inclination angle of 55 degrees to the equator; each satellite completes an orbit in approximately 12 hours. The GPS control segment has five monitor stations and four ground antennas with uplink capabilities. The monitor stations use a GPS receiver to passively track all satellites in view and accumulate ranging data. The master control station processes this information to determine satellite clock and orbit states and to update the navigation message of each satellite. This updated information is transmitted to the satellites via the ground antennas, which are also used for transmitting and receiving health and control information.

The navigation data transmitted by the satellites shall include the necessary information to determine satellite time of transmission, satellite position, satellite health, satellite clock correction, propagation delay effects, time transfer to UTC and constellation status.

GPS SPS, which utilizes a coarse acquisition (C/A) code on the L1 frequency (1 575.42 MHz), is designed to provide an accurate positioning capability for civilian users throughout the world. A precise positioning service (PPS), which utilizes the Precise Code (P-code) on a second frequency L2 (1 227.6 MHz), provides a more accurate positioning capability, but is encrypted to restrict its use to authorized agencies.

On 1 May 2000, the United States discontinued the use of GPS selective availability (SA). The discontinuation of SA resulted in an immediate improvement of GPS SPS accuracy.

The Interface Control Document (ICD) available in <http://www.navcen.uscg.gov/pubs/gps/icd200/default.htm> defines the requirements related to the interface between the Space Segment (SS) of the GPS and the Navigation User Segment.

GPS uses the geodetic reference datum approved by ICAO WGS-84 (World Geodetic System 1984).

	Global average 95% of the time	Worst site 95% of the time
Horizontal position error	13 m (43 ft)	36 m (118 ft)
Vertical position error	22 m (72 ft)	77 m (253 ft)

**Table 2 – GPS SPS Position Accuracy (Annex 10, vol. 1, item 3.7.3.1.1.1)**

## 2.1.2 Globalnaya Navigatsionnay Sputnikovaya Sistema (GLONASS)

GLONASS provides three-dimensional position and velocity determinations based upon the measurement of transit time and Doppler shift of radio frequency (RF) signals transmitted by GLONASS satellites. The system is operated by the Ministry of Defence of the Russian Federation. In 1996, the Russian Federation offered the GLONASS channel of standard accuracy (CSA) to support the needs of international civil aviation and the ICAO Council accepted the offer.

The nominal GLONASS space segment consists of 24 operational satellites and several spares. GLONASS satellites orbit at an altitude of 19 100 km (10 310 NM) with an orbital period of 11 hours and 15 minutes. Eight evenly spaced satellites are to be arranged in each of the three orbital planes, inclined 64.8 degrees and spaced 120 degrees apart.

A navigation message transmitted from each satellite consists of satellite coordinates, velocity vector components, corrections to GLONASS system time, and satellite health information. Measurements from a minimum of four satellites are required to establish three-dimensional position and time. A minimum of three satellite measurements is required to determine two-dimensional position and time, if altitude is known. The user's receiver may track these satellites either simultaneously or sequentially. GLONASS satellites broadcast in two L-band portions of the RF spectrum and have two binary codes, namely, the C/A code and the P-code, and the data message. GLONASS is based upon a frequency division multiple access (FDMA) concept. GLONASS satellites transmit carrier signals at different frequencies. A GLONASS receiver separates the total incoming signal from all visible satellites by assigning different frequencies to its tracking channels. The use of FDMA permits each GLONASS satellite to transmit identical P-code and C/A code.

The navigation data message provides information regarding the status of the individual transmitting satellite along with information on the remainder of the satellite constellation. From a user's perspective, the primary elements of information in a GLONASS satellite transmission are the clock correction parameters and the satellite position (ephemeris). GLONASS clock corrections provide data detailing the difference between the individual satellite's time and GLONASS system time, which is referenced to Coordinated Universal Time (UTC).

Ephemeris information includes the three-dimensional Earth-centred Earth-fixed position, velocity and acceleration for every half-hour epoch of each satellite. For a measurement time somewhere between the half-hour epochs, a user interpolates the satellite's coordinates using position, velocity and acceleration from the half-hour marks before and after the measurement time.

The GLONASS control segment performs satellite monitoring and control functions, and determines the navigation data to be modulated on the coded satellite navigation signals. The control segment includes a master control station and monitoring and upload stations. Measurement data from each monitoring station is processed at the master control station and used to compute the navigation data that is uploaded to the satellites via the upload station. Operation of the system requires precise synchronization of satellite clocks with GLONASS system time. To accomplish the necessary synchronization, the master control station provides the clock correction parameters.

The Interface Control Document (ICD) for GLONASS is available at <http://www.glonass-center.ru>.

As a geodetic system, GLONASS uses PZ-90 (Parameters of Earth 1990 coordinate system), and the SARPs for GNSS in Annex 10 include a conversion matrix from PZ-90 to WGS-84.

	Global average 95% of the time	Worst site 95% of the time
Horizontal position error	19 m (62 ft)	44 m (146 ft)
Vertical position error	29 m (96 ft)	93 m (308 ft)

**Table 3 – GLONASS CSA Position Accuracy (Annex 10, vol. 1 item 3.7.3.2.1.1)**

## **2.2 GNSS Receivers**

A GNSS receiver consists of an antenna and a processor which computes position, time and, possibly, other information depending on the application. Measurements from a minimum of four satellites are required to establish three-dimensional position and time. Accuracy is dependent on the precision of the measurements from the satellites and the relative positions (geometry) of the satellites used.

## **2.3 Augmentation Systems**

Even though the core constellations and the receivers can provide accuracy, continuity, availability and integrity to meet from en-route to non-precision approach (NPA) requirements, for precision approach and procedures that require a greater degree of accuracy or integrity, it is necessary to have some source of augmentation for these parameters.

The augmentation systems that are listed in Annex 10 SARPs are ABAS, GRAS, SBAS and GBAS and will be briefly described below.

Except for ABAS, the philosophy of the other augmentation systems is based on the concept of differential correction, which uses GNSS receivers installed on the ground in a precisely defined position to calculate the error for each pseudo-range distance measured from satellites in view of the core constellations. The calculated error for each satellite is then broadcasted so other receivers can correct the information coming from the satellites.

### **2.3.1 Aircraft-Based Augmentation System (ABAS)**

In the early 1990s, many aircraft operators were quick to adopt GNSS because of the availability of relatively inexpensive Global Positioning System (GPS) receivers. Operators used these early receivers as an aid to visual flight rules (VFR) and instrument flight rules (IFR) navigation. They quickly saw the benefits of having global area navigation (RNAV) capability, and demanded avionics that could be used for IFR navigation.

The core satellite constellations were not developed to satisfy the strict requirements of IFR navigation. For this reason, GNSS avionics used in IFR operations should augment the GNSS signal to ensure, among other things, its integrity. ABAS augments and/or integrates GNSS information with information available on-board the aircraft to enhance the performance of the core satellite constellations.

The most common ABAS technique is called receiver autonomous integrity monitoring (RAIM). RAIM requires redundant satellite range measurements to detect faulty signals and alert the pilot. The requirement for redundant signals means that navigation guidance with integrity provided by RAIM may not be available 100 per cent of the time. RAIM availability depends on the type of operation; it is lower for non-precision approach than for terminal, and lower for terminal than for en-route. It is for this reason that GPS/RAIM approvals usually have operational restrictions. Another ABAS technique involves integration of GNSS with other airborne sensors such as inertial navigation systems.

Many States have taken advantage of GPS/ABAS to improve service without incurring any expenditure on infrastructure. The use of GPS/ABAS is a worthwhile first stage in a phased transition to GNSS guidance for all phases of flight.

Some States have also approved the use of GPS as the only navigation service in oceanic and remote areas. In this case avionics should not only have the ability to detect a faulty satellite (through RAIM), but it should also exclude that satellite and continue to provide guidance. This feature is called fault detection and exclusion (FDE). Under such approval, aircraft carry dual systems and operators perform pre-flight predictions to ensure that there will be enough satellites in view to support the planned flight. This provides operators with a cost-effective alternative to inertial navigation systems in oceanic and remote airspace.

Some aircraft with existing inertial navigation systems have used another ABAS technique which involves the integration of GNSS with the inertial data. The combination of GNSS fault detection (FD), or FDE, along with the short-term accuracy of modern inertial navigation systems, provides enhanced availability of GNSS integrity for all phases of flight.

RAIM algorithms require a minimum of five visible satellites in order to perform fault detection and detect the presence of an unacceptably large position error for a given mode of flight. FDE uses a minimum of six satellites not only to detect a faulty satellite but also to exclude it from the navigation solution so that the navigation function can continue without interruption.

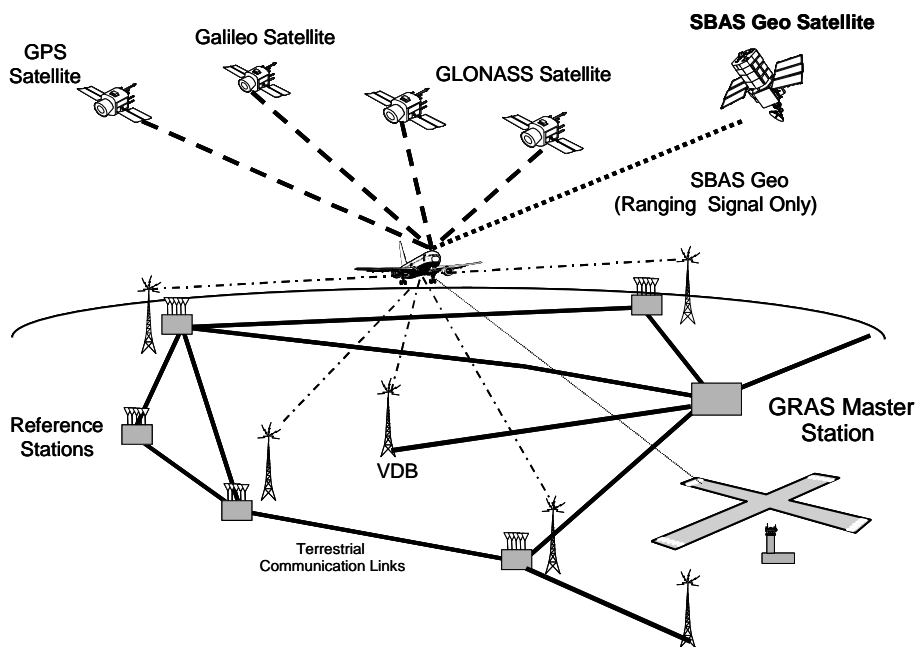
A barometric altimeter may be used as an additional measurement so that the number of ranging sources required for RAIM and FDE can be reduced by one. Baro aiding can also help to increase availability when there are enough visible satellites, but their geometry is not adequate to perform integrity function. Basic GNSS receivers require the use of baro aiding for non-precision approach operations.

### 2.3.2 Ground-Based Regional Augmentation System (GRAS)

GRAS was a system conceptually developed but was never set to operation considering its complexity and the advances in other augmentation systems.

The concept was based on ground reference stations installed all over a large area in precisely defined positions that transmitted the signal received to a master station capable of processing all information and generating error correction for each pseudo-range information received from the satellites.

The master station, then, would send the corrections to VHF stations located all over the area of interest that broadcasted the corrections according to the satellites in view in the coverage area of each VHF station.



**Figure 1 – GRAS architecture**

### 2.3.3 Satellite-Based Augmentation System (SBAS)

An SBAS augments core satellite constellations by providing ranging, integrity and correction information via geostationary satellites. The system comprises:

- a network of ground reference stations that monitor satellite signals;
- master stations that collect and process reference station data and generate SBAS messages;
- uplink stations that send the messages to geostationary satellites; and
- transponders on these satellites that broadcast the SBAS messages.



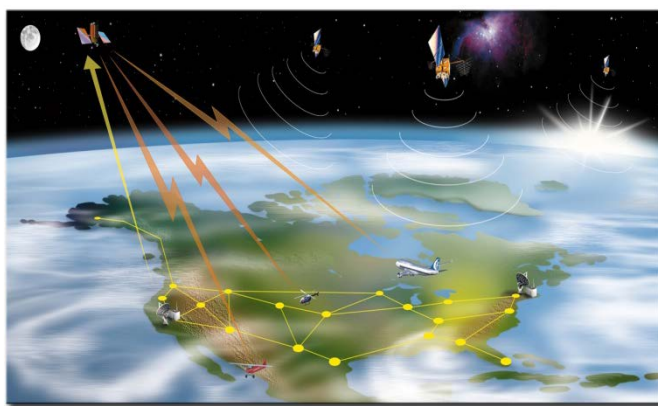
By providing differential corrections, extra ranging signals via geostationary satellites and integrity information for each navigation satellite, SBAS delivers much higher availability of service than the core satellite constellations with ABAS alone. In certain configurations, SBAS can support approach procedures with vertical guidance (APV). An SBAS approach does not require any SBAS infrastructure at an airport.

SBAS can support all en-route and terminal RNAV operations. Significantly, SBAS offers the promise of affordable RNAV capability for a wide cross section of users. This will allow States to reorganize airspace for maximum efficiency and capacity, allowing aircraft to follow the most efficient flight path between airports.

There is one operational SBAS that is the Wide Area Augmentation System (from USA) and several being developed: the European Geostationary Navigation Overlay Service (EGNOS), the Indian GPS and Geostationary Earth Orbit (GEO) Augmented Navigation (GAGAN) System, the Japanese Multi-functional Transport Satellite (MTSAT) Satellite-based Augmentation System (MSAS) and the Russian System for Differential Corrections and Monitoring (SDCM).

Geostationary satellite footprints define the coverage area of an SBAS. Within this coverage area, States may establish service areas where SBAS supports approved operations.

SBAS may suffer impact of ionosphere behavior with decreasing of positioning accuracy or even signal interruption. Ionosphere effects are discussed in section 3.3.6 of this guide.



**Figure 2 – SBAS architecture**  
(source <http://www.faa.gov>)

### **3 Ground Based Augmentation System (GBAS)**

#### **3.1 General description**

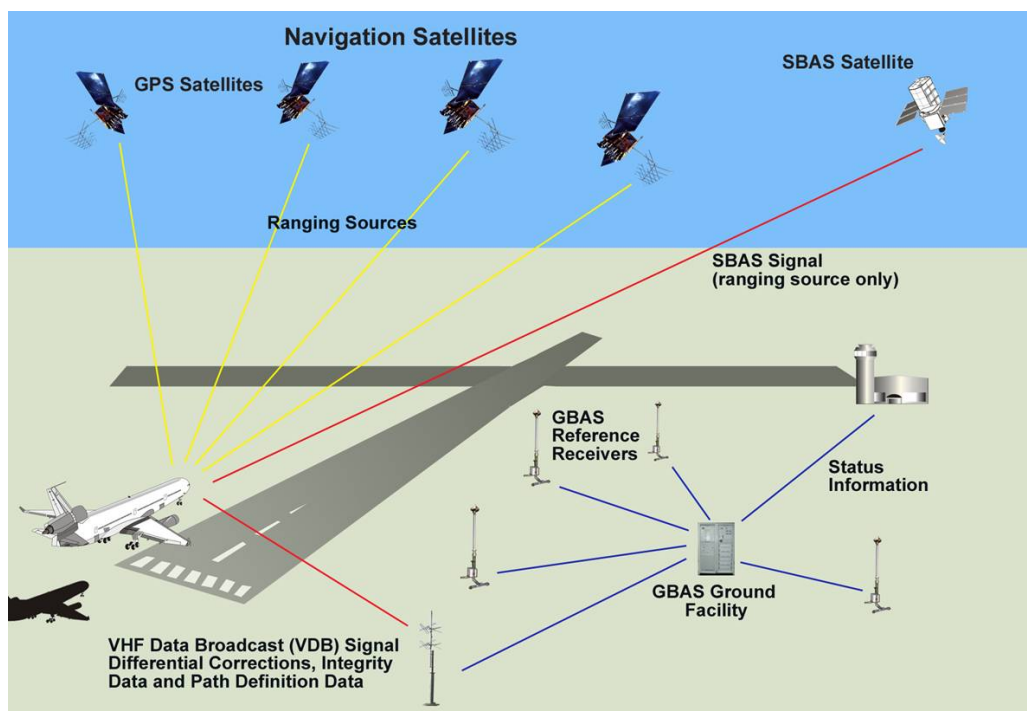
The current core constellation is unable to provide accuracy, availability, continuity and integrity to achieve precision approach. GBAS uses the concept of differential corrections to augment satellites signal in order to meet these requirements.

GBAS provides augmentation to the core constellations to enable precision approach up to Category III.

In Annex 10, volume 1, to date, there are SARPs for GBAS operating over single frequency and single constellation to CAT I operations.

SARPs for CAT II/III are already developed by the ICAO Navigation System Panel (NSP) but not yet included in Annex 10, waiting for developments in the industry.

GBAS works based on three segments: satellites constellation, ground station and aircraft receiver, as shown in Figure 3.



**Figure 3 – GBAS architecture**  
(source <http://www.faa.gov>)

GBAS ground station is formed by reference receivers with their antennas installed in precisely surveyed points. The information generated in the receiver is sent to a processor that computes the corrections for each navigation satellite in view and broadcasts these differential corrections, besides integrity parameters and precision approach pathpoints data, via a Very High Frequency (VHF) Data Broadcast (VDB).

The information broadcast is received by aircraft in VHF coverage that also receive information from the navigation satellites. Then, it uses the differential corrections on the information received directly from the navigation satellites to calculate the precise position.

The precise position is used, along with pathpoints data, to supply deviation signals to drive appropriate aircraft systems supporting precision approach operations.

The GBAS approach indication to the pilot is similar to the course and glide path indications of ILS.

### **3.2 *Benefits of GBAS***

Comparing to other precision approach systems, GBAS presents lots of benefits:

- Reduction of critical and sensitive areas;
- Curved approach;
- Positioning service;
- Provision of service in several runways in the same airport;
- Provision of several approach glide angles and displaced threshold;
- Guided missed approach; and
- Adjacent airports use.

#### **3.2.1 Reduction of critical and sensitive areas**

Localizer and glide slope have defined radiation patterns which are essential to the composition of navigation signals and thus to the precision of the signal received by the aircraft. Any disturbance in the pattern will cause deviations in the signal.

In order to guarantee that the ILS signal will not be disturbed during instrument approaches critical and sensitive areas were created and are described in Annex 10, Volume 1.

The creation of critical and sensitive areas, however, produces an operational impact with restrictions during aircraft approach.

Considering that GBAS does not use antenna patterns to compose the navigation signal, the site constraints are more related to signal blockage and multipath effects, considerably reducing the operational impact of critical and sensitive areas and increasing airport operational capabilities comparing to other precision approach system.

#### **3.2.2 Curved approach**

GBAS permits the use of guided curved approach both with lateral and vertical guidance.

This is an important feature if it is necessary to create procedures to avoid aircraft flying over specific areas close to airports for reasons of noise over urban areas or even to avoid obstacles.

This capability has been proven in test flights in several airports, but there are no SARPs in Annex 10 on an autopilot capable of executing the automatic procedure, which shall be a requirement, considering the complexity of this kind of procedure.

The Federal Aviation Administration (FAA) calls this capability TAP (Terminal Approach Path).

#### **3.2.3 Positioning service**

The GBAS positioning service provides horizontal position information to support RNAV operations within the service area.

This feature allows the increase of precision of positioning information and reduction of separation between aircraft in terminal area.

### **3.2.4 Provision of service in several runways at the same airport**

According to GBAS SARPs, the system may be configured to broadcast a maximum of 48 approaches with different configurations, which may serve different runways with different approach parameters (see Table 7).

### **3.2.5 Provision of several approach glide angles and displaced threshold**

The 48 different approaches that a single GBAS may broadcast can be configured to different parameters (see Table 7). In each Final Approach Segment (FAS) data block transmitted, parameters like glide angle and origin of the glide path can be set differently. Broadcasting different glide angles to the same runway allows setting approaches that best fit each kind of aircraft operating at the airport.

If there is a need to displace the threshold, GBAS can be quickly configured to support the new threshold, differently from ILS that should be physically moved to comply with the new position.

### **3.2.6 Guided missed approach**

This is a feature that is not defined in the SARPs but that can be provided by GBAS, increasing the safety of missed approaches.

### **3.2.7 Adjacent airports use**

The structure of FAS data block allows the same GBAS station to serve different airports (see Table 7). It has to be within the coverage of the VDB transmitted signal.

## **3.3 GBAS basic technical information**

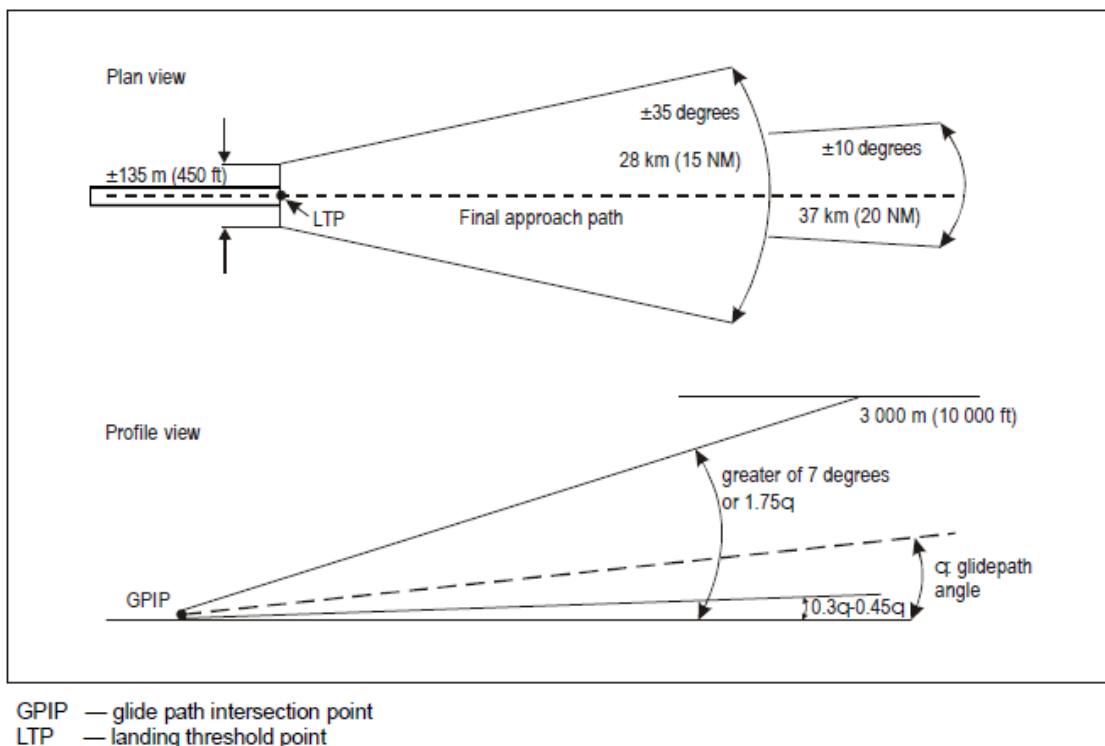
According to Annex 10, vol. 1, GBAS is intended to support all types of approach, landing, departure and surface operations and may support en-route and terminal operations.

The SARPs were developed, to date, to support Category I precision approach, approach with vertical guidance and GBAS positioning service.

The GBAS ground station performs the following functions:

- Provide locally relevant pseudo-range corrections;
- Provide GBAS-related data;
- Provide final approach segment data when supporting precision approach;
- Provide ranging source availability data; and
- Provide integrity monitoring for GNSS ranging sources.

The coverage shall be capable of supporting the level of service required in specified areas, covering, at least, according to Figure 4 – Minimum GBAS coverage (Annex 10, vol. 1, fig. D-4).



**Figure 4 – Minimum GBAS coverage (Annex 10, vol. 1, fig. D-4)**

**VDB Frequencies** - Data broadcast radio frequencies used in GBAS are selected from the radio frequencies in the band of 108 to 117.975. The lowest assignable frequency is 108.025 MHz and the highest assignable frequency is 117.950 MHz. The separation between assignable frequencies (channel spacing) is 25 kHz.

**Access technique** - A time division multiple access (TDMA) technique is used with a fixed frame structure. The data broadcast is assigned one to eight slots.

**Modulation** - GBAS data is transmitted as 3-bit symbols, modulating the data broadcast carrier by D8PSK, at a rate of 10 500 symbols per second.

**Polarization** - GBAS can provide a VHF data broadcast with either horizontal (GBAS/H) or elliptical (GBAS/E) polarization.

**Navigation information** - The navigation data transmitted by GBAS includes the following information:

- a) pseudo-range corrections, reference time and integrity data;
- b) GBAS-related data;
- c) final approach segment data when supporting precision approach; and
- d) predicted ranging source availability data.

### 3.3.1 Data content

The message types that can be transmitted by GBAS are as in Table 4.

Message type identifier	Message name
0	Spare
1	Pseudo-range corrections
2	GBAS-related data
3	Reserved for ground-based ranging source
4	Final approach segment (FAS) data
5	Predicted ranging source availability
6	Reserved
7	Reserved for national applications
8	Reserved for test applications
9 to 100	Spare
101	GRAS pseudo-range corrections
102 to 255	Spare

**Table 4 – GBAS VHF data broadcast messages (Annex 10, vol. 1, Table B-63)**

#### 3.3.1.1 Type 1 message

The Type 1 message provides differential correction for individual GNSS ranging sources. The message contains three sections:

- message information (time of validity, additional message flag, number of measurements and the measurement type);
- low-frequency information (ephemeris decorrelation parameter, satellite ephemeris, Cyclic Redundancy Check and satellite availability information); and
- satellite data measurement block.

Data content	Bits used	Range of values	Resolution
Modified Z-count	14	0 to 1 199.9 s	0.1 s
Additional message flag	2	0 to 3	1
Number of measurements (N)	5	0 to 18	1
Measurement type	3	0 to 7	1
Ephemeris decorrelation parameter (P)	8	0 to $1.275 \times 10^{-3}$ m/m	$5 \times 10^{-6}$ m/m
Ephemeris CRC	16	—	—
Source availability duration	8	0 to 2 540 s	10 s
For N measurement blocks			
Ranging source ID	8	1 to 255	1
Issue of data (IOD)	8	0 to 255	1
Pseudo-range correction (PRC)	16	$\pm 327.67$ m	0.01 m
Range rate correction (RRC)	16	$\pm 32.767$ m/s	0.001 m/s
$\sigma_{PR\_gnd}$	8	0 to 5.08 m	0.02 m
B <sub>1</sub>	8	$\pm 6.35$ m	0.05 m
B <sub>2</sub>	8	$\pm 6.35$ m	0.05 m
B <sub>3</sub>	8	$\pm 6.35$ m	0.05 m
B <sub>4</sub>	8	$\pm 6.35$ m	0.05 m

**Table 5 – Type 1 pseudo-range corrections message (Annex 10, vol. 1, table B-70)**

### 3.3.1.2 Type 2 message

The Type 2 message identifies the location of the GBAS reference point at which the corrections provided by the GBAS apply and gives other GBAS-related data according to Table 6.

Data content	Bits used	Range of values	Resolution
GBAS reference receivers	2	2 to 4	—
Ground accuracy designator letter	2	—	—
Spare	1	—	—
GBAS continuity/integrity designator	3	0 to 7	1
Local magnetic variation	11	$\pm 180^\circ$	$0.25^\circ$
Spare	5	—	—
$G_{\text{vert\_iono\_gradient}}$	8	0 to $25.5 \times 10^{-6}$ m/m	$0.1 \times 10^{-6}$ m/m
Refractivity index	8	16 to 781	3
Scale height	8	0 to 25 500 m	100 m
Refractivity uncertainty	8	0 to 255	1
Latitude	32	$\pm 90.0^\circ$	0.0005 arcsec
Longitude	32	$\pm 180.0^\circ$	0.0005 arcsec
GBAS reference point height	24	$\pm 83\,886.07$ m	0.01 m
Additional data block 1 (if provided)			
Reference station data selector	8	0 to 48	1
Maximum use distance ( $D_{\text{max}}$ )	8	2 to 510 km	2 km
$K_{\text{md\_e\_POS,GPS}}$	8	0 to 12.75	0.05
$K_{\text{md\_e\_GPS}}$	8	0 to 12.75	0.05
$K_{\text{md\_e\_POS,GLONASS}}$	8	0 to 12.75	0.05
$K_{\text{md\_e\_GLONASS}}$	8	0 to 12.75	0.05
Additional data block 2 (if provided)			
Additional data block length	8	2 to 255	1
Additional data block number	8	2 to 255	1
Additional data parameters	Variable	—	—

**Table 6 – Type 2 GBAS-related data message (Annex 10, vol. 1, Table B-71)**

### 3.3.1.3 Type 4 message

The Type 4 message contains one or more sets of Final Approach Segment (FAS) data, each defining a single precision approach. Each Type 4 message data set includes:

- Data set length;
- FAS data block – the set of parameters to identify a single precision approach or APV and define its associate approach path;
- FASVAL approach status; and
- FASLAL approach status.

Data content	Bits used	Range of values	Resolution
Operation type	4	0 to 15	1
SBAS provider ID	4	0 to 15	1
Airport ID	32	—	—
Runway number	6	0 to 36	1
Runway letter	2	—	—
Approach performance designator	3	0 to 7	1
Route indicator	5	—	—
Reference path data selector	8	0 to 48	1
Reference path identifier	32	—	—
LTP/FTP latitude	32	±90.0°	0.0005 arcsec
LTP/FTP longitude	32	±180.0°	0.0005 arcsec
LTP/FTP height	16	−512.0 to 6 041.5 m	0.1 m
ΔFPAP latitude	24	±1.0°	0.0005 arcsec
ΔFPAP longitude	24	±1.0°	0.0005 arcsec
Approach TCH (Note 2)	15	0 to 1 638.35 m or 0 to 3 276.7 ft	0.05 m or 0.1 ft
Approach TCH units selector	1	—	—
GPA	16	0 to 90.0°	0.01°
Course width (Note 1)	8	80 to 143.75 m	0.25 m
ΔLength offset	8	0 to 2 032 m	8 m
Final approach segment CRC	32	—	—

*Note 1.— When the runway number is set to 0, then the course width field is ignored and the course width is 38 metres.*

*Note 2.— Information can be provided in either feet or metres as indicated by the approach TCH unit selector.*

**Table 7 – Final Approach Segment (FAS) Data block (Annex 10, v. 1, Table B-66)**

### 3.3.2 Channel number

Each GBAS approach transmitted from the ground subsystem is associated with a channel number in the range of 20 001 to 39 999. If provided, the GBAS positioning service is associated with a separate channel number in the range of 20 001 to 39 999. The channel number is given by:

$$\text{Channel number} = 20\,000 + 40(F - 108.0) + 411(S)$$

where

F = the data broadcast frequency (MHz)

S = RPDS or RSDS

RPDS = reference path data selector for the FAS data block

RSDS = reference station data selector for the GBAS ground subsystem.

### 3.3.3 GBAS receiver

The term “GBAS receiver” designates the GNSS avionics that at least meet the requirements for a GBAS receiver as outlined in Annex 10, vol. 1 and the specifications of RTCA/DO-253A, as amended by the relevant United States FAA TSO (or equivalent).

Aircraft must have the capability to receive navigation satellites signal and the VDB information, with respective antennas, and a way to select the approach and an indication of course and glide path.



Like ILS and microwave landing system (MLS), GBAS will provide lateral and vertical guidance relative to the defined final approach course and glide path. The GBAS receiver will employ a channelling scheme that selects the VDB frequency. Approach procedure data are uplinked via the VDB. Each separate procedure requires a different channel assignment.

GBAS avionics standards have been developed to mimic the ILS, in terms of aircraft system integration, in order to minimize the impact of installing GBAS on the existing avionics. For example, display scaling and deviation outputs will be equivalent to the ILS. All avionics will provide final approach course and glide path guidance to all configurations of ground stations.

The GBAS positioning service will provide position, velocity and time data that can be used as an input to an on-board navigator.

In line with ICAO SARPs and the strategy for the introduction and application of non-visual aids to approach and landing, which permit a mix of systems providing precision approach service, industry has developed the multi-mode receiver. This receiver may support precision approach operations based on ILS, MLS and GNSS (GBAS and SBAS).

For GBAS, integrity monitoring is accomplished by the avionics continually comparing Horizontal/Lateral and Vertical Protection Levels (HPL/LPL and VPL), derived from the augmentation signal and satellite pseudorange measurements, against the alert limit for the current phase of flight. When either the vertical or the horizontal limit is exceeded, an alert is given to the pilot. For a precision approach, the aircraft GBAS receiver only uses satellites for which corrections are available.

### **3.3.4 Siting considerations**

The installation of a GBAS ground subsystem involves special considerations in choosing prospective sites for the reference receiver antennas and the VDB antenna(s). In planning antenna siting, Annex 14 obstacle limitation requirements must be met.

The site should be selected in an area free of obstructions, so as to permit the reception of satellite signals at elevation angles as low as possible. In general, anything masking GNSS satellites at elevation angles higher than 5 degrees will degrade system availability.

The antennas for the reference receivers should be designed and sited to limit multipath signals that interfere with the desired signal. Mounting antennas close to a ground plane reduces long-delay multipath resulting from reflections below the antenna. Mounting height should be sufficient to prevent the antenna being covered by snow, or being interfered with by maintenance personnel or ground traffic. The antenna should be sited so that any metal structures, such as air vents, pipes and other antennas are outside the near-field effects of the antenna.

Besides the magnitude of the multipath error at each reference receiver antenna location, the degree of correlation must also be considered. Reference receiver antennas should be located in places that provide independent multipath environments.

The installation of each antenna should include a mounting that will not flex in winds or under ice loads.

Reference receiver antennas should be located in an area where access is controlled. Traffic may contribute to error due to multipath or obstruct view of satellites from the antennas.

The VDB antenna should be located so that an unobstructed line-of-sight exists from the antenna to any point within the coverage volume for each supported FAS. Consideration should also be given to ensuring the minimum transmitter-to-receiver separation so that the maximum field strength is not exceeded. In order to provide the required coverage for multiple FASs at a given airport, and in order to allow flexibility in VDB antenna siting, the actual coverage volume around the transmitter antenna may need to be considerably larger than that required for a single FAS. The ability to provide this coverage is dependent on the VDB antenna location with respect to the runway and the height of the VDB antenna. Generally speaking, increased antenna height may be needed to provide adequate signal strength to users at low altitudes, but may also result in unacceptable multipath nulls within the desired coverage volume. A suitable antenna height trade-off must be made based on analysis, to ensure the signal strength requirements are met within the entire volume. Consideration should also be given to the effect of terrain features and buildings on the multipath environment.

### **3.3.5 Frequency interference issues**

GBAS works with navigation satellites frequencies and VHF frequencies for transmitting VDB information. Both frequency bands are susceptible to suffer interference that can even block the signal.

Causes of interference in 108-118MHz band are well known to affect VOR and Localizers.

In navigation satellites band, the signal is very weak (-160dBm) and thus, susceptible to interference.

Interference was noticed in GBAS within the navigation satellites band at airports in USA and Germany, caused by GNSS repeaters and GNSS blockers (jammers).

### **3.3.6 Influence of the Ionosphere**

The ionosphere affects signals broadcast by GNSS (core satellite constellations and SBAS geostationary satellites) in two ways: it delays the propagation of the modulation (i.e., the code carried by the signal from which pseudorange measurements are made) and, in some regions, it can cause rapid fluctuations in the power and phase of the received signal. The first effect is known as “group delay”, the second as “scintillation”. While the errors in pseudorange measurements caused by group delay are typically of the order of a few tenths of a meter, they can exceed 100 m on rare occasions.

The behavior of the ionosphere, as far as its observable effects on radio signals are concerned, varies with time and location. Since the ionization of the upper atmosphere is caused by radiations from the sun, the density and altitude distribution of the free electrons it contains vary with the 11-year solar cycle, the season of the year, and time of day. They also vary as a function of geomagnetic latitude. Finally, they can be severely perturbed by rare geomagnetic (ionospheric) storms caused by powerful energetic emissions from the sun.

In general ionospheric effects in mid-latitude regions are mild: variations in ionospheric delays are gradual and scintillation virtually inexistent. This may not be true during severe ionospheric (geomagnetic) storms, but such storms are very rare, and their effects can be detected, and sometimes corrected, by augmentation systems. In low-latitude regions, ionospheric effects are more severe: large variations ionospheric delays and patches causing intense amplitude and phase scintillation are frequent, particularly during the local evening hours during years near a peak of the solar cycle. Furthermore, steep ionospheric delay gradients can occur at the edges of deep ionospheric depletions, also known as ionospheric bubbles. In high-latitude regions, ionospheric effects are more severe than in mid-latitude regions, but less severe than in low-latitude regions. This is due to the magnitudes of ionospheric delays,

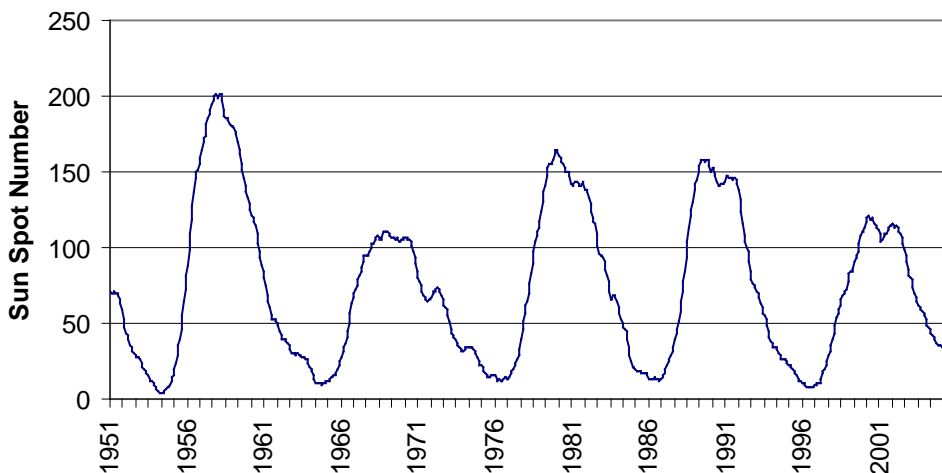
which, while fairly variable, tend to be much smaller than in low-latitude regions. Scintillation can also occur in high-latitude regions, particularly during periods of increased ionospheric activity. It mostly occurs in the form of phase scintillation in these regions.

The different GNSS systems use different approaches to correcting for ionospheric delays.

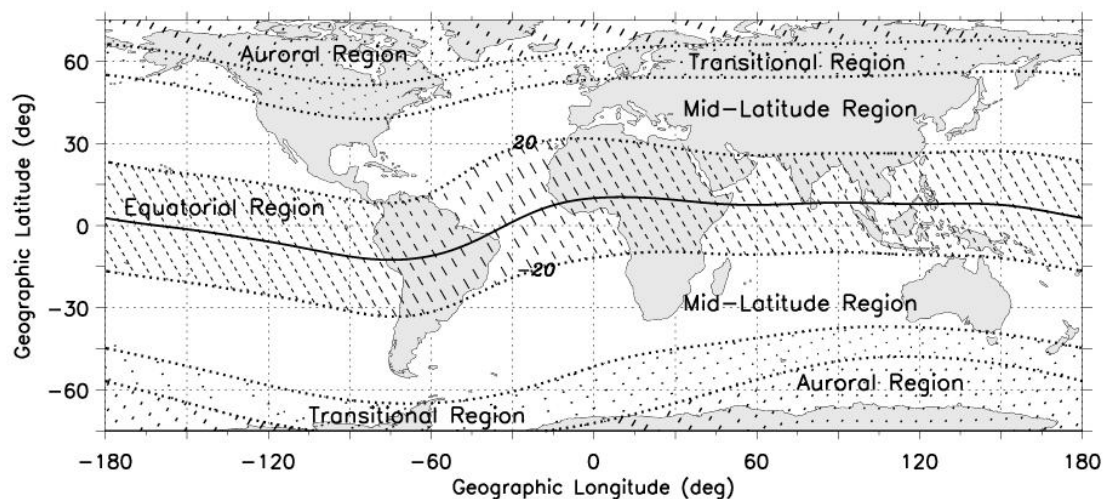
Single-frequency GBAS avionics systems correct for the combined effects of multiple sources of errors simultaneously, including satellite clock and ephemeris errors, ionospheric delay errors, and tropospheric delay errors, using the differential corrections broadcast by a GBAS ground station. This approach to correcting for ionospheric delays is adequate for Category I precision approach operations.

The VHF Data Broadcast function of GBAS broadcasts messages that contain pseudorange corrections for all satellites in view. When applied, these corrections eliminate, or at least greatly reduce, the majority of common errors (e.g., ionospheric delay) between the ground and the aircraft. In addition, the messages also carry parameters characterizing the uncertainties in these corrections. Equations implemented in the avionics rely on these parameters to calculate protection levels. These protection levels are then compared to the maximum alert limits for that station and the desired flight operation.

A key limitation on the GBAS corrections is the spatial separation between the GBAS ground station and the GBAS aircraft user, since the corrections broadcast to the aircraft can only correct common errors. The main issue here relates to the ionospheric delay, which can vary as a function of distance. This difference tends to be small over small distances typical of the local area under nominal ionospheric conditions in the mid-latitudes. (This is not necessarily the case, however, in the equatorial area where variations can be large even in a local area). Conditions associated with severe mid-latitude ionospheric storms present a different case. In this case, delay magnitudes can vary quite rapidly over short distances and thus may not be adequately mitigated even after the corrections from the GBAS ground station are applied. This presents significant challenges for meeting CAT I requirements and major design issues for CAT II/III, given the more stringent accuracy and integrity requirements that apply to these operations. The main challenge is to adequately demonstrate that the system will be able to meet the integrity and availability requirements during severe ionospheric storms when ionospheric delays can potentially vary rapidly both in time and space.



**Figure 5 – Solar Activity**  
(source <http://www.swpc.noaa.gov/> )



**Figure 6 – Ionospheric regions**

### 3.4 Development of GBAS

GBAS was included in Annex 10, Volume 1 by Amendment 76, developed by the Global Navigation Satellite System Panel (GNSSP) from ICAO, that later became the current Navigation Systems Panel (NSP).

Several government agencies, industries and universities work on the development of GBAS ground stations and aircraft receivers and on the operational implementation of the system.



**Figure 7 – GBAS stations**  
(source [www.flygls.net](http://www.flygls.net))

#### 3.4.1 International GBAS Working Group (IGWG)

Since 2004, the Federal Aviation Administration and Eurocontrol chair the meetings of the International GBAS Working Group with the attendance of Air Navigation Service Providers, Certification Authorities, Airport Authorities, Airlines, aeronautical industries, universities and others.

The purpose of the IGWG is to share information regarding GBAS implementation and development. On February 2011, IGWG was in their 11<sup>th</sup> meeting.

IGWG information is hosted at <https://extranet.eurocontrol.int>.

### **3.4.2 GBAS station manufacturers**

Several universities and companies are developing GBAS ground stations. Until mid 2011, only Honeywell has a certified station (SLS-4000).

Several other companies are working on GBAS projects: IACIT, SELEX, NPPF Spectr, Indra, Thales, NEC, Park Air, GM Merck and others.

### **3.4.3 GBAS receiver manufacturers**

Avionics companies are developing Multi-mode receivers (MMR), which comprise several receivers in the same box (VOR, ILS, GNSS). This is interesting for space and weight saving in the aircraft. Rockwell-Collins has its GLU-925 (GNSS Landing Unit) that is certified for GBAS CAT I operations. Honeywell is developing an Integrated Navigation Receiver (INR).

Although MMR is a good concept, it is expensive. General aviation lacks a single GBAS receiver.

### **3.4.4 GBAS in aircraft manufacturers**

The big aircraft manufacturers (Boeing and Airbus) have already implemented GBAS landing capability in several of their aircrafts.

Airbus offers GBAS CAT I as an optional item for customers in A380, A350 and A320. For A330 and A340, they are still working on approval for operation.

Boeing offers GBAS CAT I as an optional item in B737-NG and as a regular item in B747-8 and B787.

## **3.5 Considerations for GBAS implementation**

The implementation of GBAS operations requires a series of activities in order to enable the accomplishment of an efficient process.

### **3.5.1 Implementation Planning**

The decision of installing a GBAS has effects in several areas of aeronautical community and must be preceded by a detailed analysis of the scenario.

A study for identification of airports suitable for installation must be conducted followed by a Cost-benefit analysis (CBA) of the implementation.

The CBA must take in consideration several items like:

- ✓ Number of aircraft ready to operate GBAS;
- ✓ Number of aircraft operators committed with the acquisition/modernization of GBAS-capable aircraft;
- ✓ Statistical analysis of meteorological conditions;
- ✓ Evaluation of air traffic growth;
- ✓ NAVAIDs existing to support nonvisual approaches;
- ✓ Planning to change the existing NAVAIDs;
- ✓ Evaluation of the real operational requirements at the airport.

### **3.5.2 Analysis of ionosphere impact on GBAS**

Ionosphere is a challenge for GBAS implementation. Under normal conditions, this layer of the atmosphere is already causing delays in the signals from GPS satellites, varying according to the region of the globe.

SAM region, located in the vicinity of the geomagnetic equator, suffers greater impacts because of the ionosphere particularly with the phenomena of scintillation and plasma bubbles, which can cause errors in receivers and even cause loss of information from satellites.

Stanford University has developed a threat model to increase the availability of GBAS stations based on the geometrical arrangement of satellites in space. In addition, they have modeled abnormal shaped ionosphere gradients as linear wavefronts semi-infinite with constant speed propagation. The gradient is assumed as a linear variation in the vertical ionosphere delay between a maximum and a minimum (<http://waas.stanford.edu/~wwu/papers/gps/PDF/LeeIONGNSS06.pdf>).

Thus, three parameters are essential in this threat model:

- Delay difference between two points;
- Distance between the points;
- Speed of the wavefront.

This threat model, however, applies to date only to the architecture of the station Honeywell SLS-4000 and was conducted only with data collected in the continental U.S. and is valid for mid-latitude regions.

A State that purchases a station from other company must ensure the same equipment certification in accordance with the requirements of accuracy, availability, continuity and integrity required for the phase of flight that is required to support, even during hostile ionosphere conditions. It must be clear that manufactures can use a different threat model in their systems and they must be certificated according to State regulations.

Ensuring that a GBAS system is robust enough to operate at low latitudes may require simulations or even tests facing the actual events of the ionosphere. The problem of using actual events is that they are unpredictable and periods of high solar activity, when events become more frequent, occur every 11 years.

**A State wishing to validate Stanford threat model for a specific region** should set up a structure which allows collecting data from GPS satellites to identify and measure the ionosphere gradients and their speeds. To do this it is necessary to:

### **1- Install GPS receivers around the area of interest**

The receivers must be in large number to allow identification of delays at various points in the ionosphere.

The receivers must be spaced apart no more than 100 km in order to provide a good definition of the gradients calculated.

The receivers must be able to receive L1 and L2 frequencies, for a better definition of the ionosphere delays.

Data acquisition rate of the receivers must be greater than 1Hz for greater definition of the measures, which will generate a large amount of data.

The mounting location of GPS antennas should preferably be free of obstacles from 5 degrees elevation.

### **2- Collect and store data from receivers**

Data should be collected periodically from the stations and stored.

Data collection can be accomplished by an external storage device or by a network that performs the download to a storage server.

### **3- Identify the occurrence of severe ionosphere events**

A software must be used to identify, within the amount of data collected, the occurrence of significant ionosphere event.

### **4- Calculate the velocities of the wavefronts and gradients**

A software must be used to calculate the velocity of the wavefronts and the gradients referent to the data with significant ionosphere event.

### **5- Comparison with the threat model**

Finally, the calculated points will be entered into the threat model allowing the evaluation of the applicability of the model.

It is important to point out that the validation of Stanford threat model is a huge effort, demanding a high budget to cover expenses with equipment, software and research, and also requires the support of institutions capable of doing this kind of work.

Besides, the completion of this kind of analysis in an area subject to worse ionosphere behavior is very useful to areas with better ionosphere.

### **3.5.3 Personnel training**

The transition to GBAS represents a significant change for aviation, so it requires new approaches to regulation, provision of services and operation of aircraft, and personnel training is the key for the success of implementation.

Training must include:

- ✓ Regulators – responsible for updating the regulation to include GBAS operations;
- ✓ Procedure designers – responsible for the design of new GBAS procedures;
- ✓ Air traffic services – responsible for airspace traffic control;
- ✓ Aeronautical information services – responsible for NOTAM and databases;
- ✓ Aerodrome operators – responsible for the operation of the new GBAS infrastructure;
- ✓ Pilots;
- ✓ Airworthiness standards – responsible for approving avionics and installation;
- ✓ NAVAIDs maintenance personnel – responsible for the maintenance of the GBAS station.

### **3.5.4 GBAS ground station acquisition and installation**

This phase comprises several activities that include:

- ✓ Identification of the GBAS manufacturers;
- ✓ Obtainment of information from the manufacturers;
- ✓ Definition of technical and logistics requirements for the acquisition;
- ✓ Obtainment of proposals from the manufacturers;
- ✓ Selection of the best proposal and contract signature;
- ✓ Installation and configuration of the station;
- ✓ Ground and flight tests;
- ✓ Commissioning.

### **3.5.5 Certification and operational approvals**

An important issue during implementation of GBAS is certification and operational approvals that are dependant upon the country regulations.

The common steps in certification are: System Design Approval, Facility Approval and Operational Approval.

System design approval (SDA) refers to the certification of the system as a product. Each state may have a procedure to do all the SDA or validate the SDA done by another country.

Facility approval refers to the certification of the installation, with the compliance with all the requirements of the product installed in a specific location and condition.

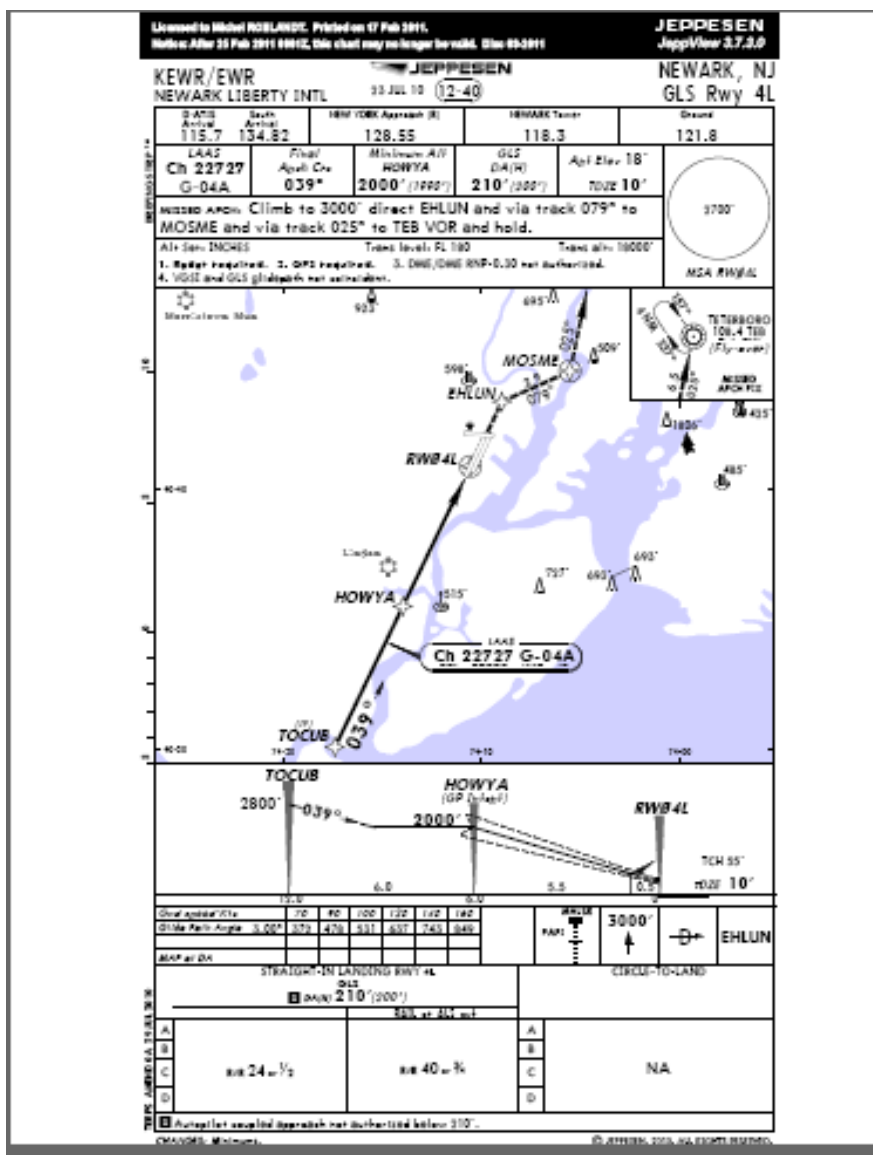
Operational approval refers to proper operation, and involves existence of regulations, personnel training and all operational process defined and documented.



### Effective implementation

Following the phases of training personnel, updating regulations, installing ground station and certification, the Aeronautical Authority must render effective the use of the GBAS system.

During the update of regulations, it is important to define the backup infrastructure and alternate procedures in case of system failure.



**Figure 8 – GLS approach chart**  
 (available at <http://flygls.net/articles/?c=charts>)

#### 4 List of acronyms

The following acronyms are found in the body of this guide:

ABAS	- Aircraft Based Augmentation System
APV	- Approach with Vertical Guidance
C/A	- Coarse Acquisition
CSA	- Channel of Standard Accuracy
EGNOS	- European Geostationary Navigation Overlay Service
FAA	- Federal Aviation Administration
FAS	- Final Approach Segment
FDE	- Fault Detection and Exclusion
FDMA	- Frequency Division Multiple Access
GAGAN	- GPS and Geostationary Earth Orbit Augmented Navigation System
GBAS	- Ground Based Augmentation System
GEO	- Geostationary Earth Orbit
GLONASS	- Global Navigation Satellite System
GNSS	- Global Navigation Satellite System
GNSSP	- Global Navigation Satellite System Panel
GPS	- Global Positioning System
GRAS	- Ground Based Regional Augmentation System
HPL	- Horizontal Protection Level
ICAO	- International Civil Aviation Organization
ICD	- Interface Control Document
IFR	- Instrument Flight Rules
IGWG	- International GBAS Working Group
ILS	- Instrument Landing System
LAL	- Lateral Alert Limit
MLS	- Microwave Landing System
MMR	- Multi-Mode Receiver
MSAS	- MTSAT Satellite Based Augmentation System
MTSAT	- Multi-functional Transport Satellite
NAVAID	- Navigation Aid
NPA	- Non Precision Approach
NSP	- Navigation Systems Panel
PPS	- Precision Positioning System
RAIM	- Receiver Autonomous Integrity Monitoring
RF	- Radio Frequency
RNAV	- Area Navigation
RPDS	- Reference Path Data Selector
RSDS	- Reference Station Data Selector
SARPs	- Standards and Recommended Practices
SBAS	- Satellite Based Augmentation System
SDCM	- System for Differential Corrections and Monitoring
SPS	- Standard Positioning System
TAP	- Terminal Approach Path
TDMA	- Time Division Multiple Access
TSO	- Technical Standard Order

UTC	- Universal Time Coordinated
VAL	- Vertical Alert Limit
VDB	- VHF Data Broadcast
VFR	- Visual Flight Rules
VHF	- Very High Frequency
VOR	- VHF Omnidirectional Range
VPL	- Vertical Protection Level
WAAS	- Wide Area Augmentation System

## 5 List of references in the document

Figure 1 – GRAS architecture.....	10
Figure 2 – SBAS architecture .....	11
Figure 3 – GBAS architecture.....	12
Figure 4 – Minimum GBAS coverage (Annex 10, vol. 1, fig. D-4) .....	15
Figure 5 – Solar Activity.....	21
Figure 6 – Ionospheric regions.....	22
Figure 7 – GBAS stations .....	22
Figure 8 – GLS approach chart.....	27
Table 1 – Signal-in-space performance requirements (Annex 10, vol. 1, table 3.7.2.4-1) .....	5
Table 2 – GPS SPS Position Accuracy (Annex 10, vol. 1, item 3.7.3.1.1.1).....	7
Table 3 – GLONASS CSA Position Accuracy (Annex 10, vol. 1 item 3.7.3.2.1.1).....	8
Table 4 – GBAS VHF data broadcast messages (Annex 10, vol. 1, Table B-63) .....	16
Table 5 – Type 1 pseudo-range corrections message (Annex 10, vol. 1, table B-70) .....	16
Table 6 – Type 2 GBAS-related data message (Annex 10, vol. 1, Table B-71).....	17
Table 7 – Final Approach Segment (FAS) Data block (Annex 10, v. 1, Table B-66).....	18

## 6 List of reference documents

All documents included in this section provide information about GBAS and contribute to the implementation of the concept.

- ICAO Annex 10, vol.1, to the Convention on International Civil Aviation;
- ICAO Annex 14 to the Convention on International Civil Aviation;
- ICAO Doc 9849 – GNSS Manual;
- ICAO NSP Manual on Ionospheric Effects on GNSS Aviation Operations – December/2006;
- FAA Non-Fed Specification FAA-E-AJW44-2937A - CATEGORY I LOCAL AREA AUGMENTATION SYSTEM GROUND FACILITY;
- Department of Defense. (2000). *Navstar GPS Space Segment/Navigation User Interfaces* (ICDGPS-200C with IRN-200C-004, 12 April 2000). Washington, DC: U.S. Government Printing Office;
- RTCA, Incorporated. (2001). *GNSS based precision approach local area augmentation system (LAAS) signal-in-space interface control document* (RTCA/DO-246C). Washington, DC: RTCA, Incorporated.
- RTCA, Incorporated. (2001). *Minimum Aviation System Performance Standards for the local area augmentation system (LAAS)* (RTCA/DO-245A). Washington, DC: RTCA, Incorporated.
- RTCA, Incorporated. (2001). *Minimum operational performance standards for global positioning system/local area augmentation system airborne equipment* (RTCA/DO-253A). Washington, DC: RTCA, Incorporated.
- RTCA, Incorporated. (2002). *Guidelines for Communication Navigation Surveillance, and Air Traffic Management (CNS/ATM) Systems Software Integrity Assurance* (RTCA/DO-278). Washington, DC: RTCA, Incorporated.
- TSO C162 - Ground Based Augmentation System Very High Frequency Data Broadcast Equipment.
- TSO C161 - Ground Based Augmentation System Positioning and Navigation Equipment.
- ED-88 - MOPS for Multi-Mode Airborne Receiver (MMR) including ILS, MLS and GPS used for Supplemental Means of Navigation, Aug 97.
- ED-95 - MASPS for a Global Navigation Satellite System Ground Based Augmentation System to Support Cat I Operations, October 99.
- ED-114 - MOPS for a Ground Based Augmentation System (GBAS) ground facility to support CAT I approach and landing, Sept. 03.
- ED-144 - System / Ground Based Augmentation System to Support Precision Approach Operations, Oct 2007.

## **APPENDIX C**

### **GNSS RELATED AN-CONF/12 RECOMMENDATIONS**

#### **Recommendation 6/5 – ICAO work programme to support global navigation satellite system evolution**

That ICAO undertake a work programme to address:

- a) interoperability of existing and future global navigation satellite system constellations and augmentation systems, with particular regard to the technical and operational issues associated with the use of multiple constellations;
- b) identification of operational benefits to enable air navigation service providers and aircraft operators to quantify these benefits for their specific operational environment; and
- c) continued development of Standards and Recommended Practices and guidance material for existing and future global navigation satellite system elements and encouraging the development of industry standards for avionics.

#### **Recommendation 6/6 – Use of multiple constellations**

That States, when defining their air navigation strategic plans and introducing new operations:

- a) take advantage of the improved robustness and availability made possible by the existence of multiple global navigation satellite system constellations and associated augmentation systems;
- b) publish information specifying the global navigation satellite system elements that are approved for use in their airspace;
- c) adopt a performance-based approach with regard to the use of global navigation satellite system (GNSS), and avoid prohibiting the use of GNSS elements that are compliant with applicable ICAO Standards and Recommended Practices;
- d) carefully consider and assess if mandates for equipage or use of any particular global navigation satellite system core constellation or augmentation system are necessary or appropriate;

That aircraft operators:

- e) consider equipage with GNSS receivers able to process more than one constellation in order to gain the benefits associated with the support of more demanding operations.

#### **Recommendation 6/8 – Planning for mitigation of global navigation satellite system vulnerabilities**

That States:

- a) assess the likelihood and effects of global navigation satellite system vulnerabilities in their airspace and apply, as necessary, recognized and available mitigation methods;
- b) provide effective spectrum management and protection of global navigation satellite system (GNSS) frequencies to reduce the likelihood of unintentional interference or degradation of GNSS performance;

- c) report to ICAO cases of harmful interference to global navigation satellite system that may have an impact on international civil aviation operations;
- d) develop and enforce a strong regulatory framework governing the use of global navigation satellite system repeaters, pseudolites, spoofers and jammers;
- e) allow for realization of the full advantages of on-board mitigation techniques, particularly inertial navigation systems; and
- f) where it is determined that terrestrial aids are needed as part of a mitigation strategy, give priority to retention of distance measuring equipment (DME) in support of inertial navigation system (INS)/DME or DME/DME area navigation, and of instrument landing system at selected runways.

**Recommendation 6/9 – Ionosphere and space weather information for future global navigation satellite system implementation**

That ICAO:

- a) coordinate regional and global activities on ionosphere characterization for global navigation satellite system implementation;
- b) continue its effort to address the global navigation satellite system (GNSS) vulnerability to space weather to assist States in GNSS implementation taking into account of long-term GNSS evolution as well as projected space weather phenomena; and
- c) study the optimum use of space weather information that is globally applicable from low to high magnetic latitude regions for enhanced global navigation satellite system performance at a global context.

That States:

- d) consider a collaborative approach to resolve ionospheric issues including ionospheric characterization for cost-effective, harmonized and regionally suitable global navigation satellite system implementation.

**Recommendation 6/10 – Rationalization of terrestrial navigation aids**

That, in planning for the implementation of performance-based navigation, States should:

- a) assess the opportunity for realizing economic benefits by reducing the number of navigation aids through the implementation of performance-based navigation;
- b) ensure that an adequate terrestrial navigation and air traffic management infrastructure remains available to mitigate the potential loss of global navigation satellite system service in their airspace; and
- c) align performance-based navigation implementation plans with navigation aid replacement cycles, where feasible, to maximize cost savings by avoiding unnecessary infrastructure investment.