



Agenda Item 3: Review of GREPECAS Programmes and Projects

3.8 Projects of the MET Programme

(Presented by the Secretariat)

SUMMARY	
This working paper presents the regional implementation activities of the “Aeronautical Meteorology” Programme and its associated projects, as approved by the Eleventh Meeting of the Aeronautical Meteorology Subgroup (AERMETSG/11).	
REFERENCES	
<ul style="list-style-type: none">• Report of the Sixteenth Meeting of the CAR/SAM Regional Planning and Implementation Group (GREPECAS/16), Punta Cana, Dominican Republic, 28 March - 1 April 2011; and• Report of the Eleventh Meeting of the Aeronautical Meteorology Subgroup (AERMETSG/11), Lima, Peru, 28-30 November 2011.	
ICAO strategic objectives:	<i>A – Safety</i> <i>C- Environmental protection and sustainable development of air transport</i>

1. Background

1.1 The sixteenth meeting of the CAR/SAM Regional Planning and Implementation Group (GREPECAS/16) approved Decision 16/47, whereby the activities of the AERMET Subgroup, amongst other subgroups, and of its respective Task Forces become programmes and projects.

2. Discussion

In compliance with GREPECAS Decision 16/47, the Eleventh Meeting of the Aeronautical Meteorology Subgroup (AERMETSG/11), held on 28-30 November 2011, formulated Decision 11/06, which had been approved through the GREPECAS “fast-track” procedure, and whereby the AERMET Subgroup became the MET Programme for the CAR and SAM Regions, with the following projects:

- WAFS implementation project (CAR/SAM)
- IAVW implementation project (for each Region);
- QMS/MET implementation project (for each Region); and
- Project for the optimisation of OPMET exchange, including SIGMETs (WS, WV, and WC) (for each Region).

2.1 The Meeting should note that the projects approved by GREPECAS are closely related to the tasks that were being carried out by the AERMETSG in collaboration with the Secretariat, and that progress had been made in the tasks of various projects. In general terms, the MET programme is making progress as scheduled. The main achievements of these projects in the SAM Region, since they started, are:

- Drafting and updating of amendments up to amendment 75 to Annex 3 (November 2010), the SIGMET guide, the OPMET guide, and the QMS/MET practical guide for the preparation of ISO 9001: 2008 documentation (17 model documents);
- 19 MET experts of 11 States participated at the ICAO/WMO Seminar/Workshop on volcanic ash SIGMETs;
- Volcanic ash simulation protocols were developed in coordination with the Buenos Aires and Washington volcanic ash advisory centres;
- 6 volcanic ash simulation exercises (SIGMET tests) were carried out;
- Implementation of two OPMET data and SIGMET control processes four times a year at the Brasilia International OPMET data bank to detect errors in message headers. Likewise, annual control of OPMET exchange was implemented amongst 11 States for detecting and analysing deficiencies in the drafting and issuance of messages so that States may take immediate action to make sure that messages are received by the various users;
- Two CAR/SAM seminars/workshops on quality management in aeronautical meteorological services (QMS/MET) were held in coordination with WMO, the first one in the Dominican Republic (December 2006) and the second one in Mexico (October 2011), which provided training to 10 professionals of 8 States and 2 professionals of 2 States, respectively;
- 27 MET experts of 9 States attended the seminar/workshop on quality management in aeronautical meteorological services (QMS/MET), which was held in Spanish in Lima, Peru (December 2010) for SAM States. 97 experts of 4 States who did not attend the Lima seminar participated in their respective State.
- A lead auditor course that was attended by meteorology experts of 9 States of the Region, all of whom passed the course;
- MET “audit test” conducted in CORPAC, Peru, led by a lead auditor of a certifying company, with the participation of three of the experts who had recently passed the lead auditor course;
- Out of the 97 aerodromes listed in the CAR/SAM FASID AOP Table, 35 from three SAM States are already certified, accounting for 36% of the total, and it is expected that by 15 November 2012, when standard 2.2.3 of Annex 3 will become effective, at least 50% of the aerodromes listed in the aforementioned AOP Table will be certified.

2.2 The Meeting should take note that one State of the Region included a provision in its ISO 9001: 2008 certification contract whereby the certifying company would ask the ICAO SAM Office for MET experts in order to continue giving certified MET lead auditors an opportunity, since they can identify opportunities for improvement not only in the State being audited but also in their own State.

2.3 **Appendices A and B** contain a description of the projects and a GANTT diagram for each of the four projects of the MET Programme in the CAR and SAM Regions, respectively.

2.4 In terms of conflict management, the Meeting should note that conflict is inevitable within the context of a project. Conflict may result from scarce resources, timetable priorities, and individual working styles. Therefore, it is imperative to minimise conflict by means of basic team rules, group rules, and sound project management practices, and through communication plans and the definition of roles.

2.5 Within this context and pursuant to GREPECAS Conclusion 16/49, the implementation of projects under the MET Programme requires the necessary human resources. Consequently, the respective administrations must help project directors and members meet their commitment to project activities. This includes systems for enabling the “GoToMeeting” tool, since several project members have mentioned that the hardware and software required to use the “GoToMeeting” tool, as well as the MS Project application are not available. Administrations should guarantee their participation at any events that may be required.

2.6 Another problem we face is the fact that the WMO has projects for assisting States in the implementation, *inter alia*, of QMS/MET, thus duplicating the efforts of both ICAO and the States.

2.7 In this sense, and based on paragraph 6 of Doc 7475, *Modus Vivendi agreed between ICAO and the WMO*, “the two Organizations will consult each other about their respective plans and programmes for technical assistance in the area of meteorology in order to ensure a high level of professional training and maximum use of meteorological services in benefit of insufficiently developed countries.”

3. **Suggested action**

3.1 The Meeting is invited to:

- a) take into account the information provided in this working paper;
- b) review the information contained in Appendices A and B; and
- c) agree on any other action it may deem necessary.

APPENDIX B1

CAR/SAM PROJECT FOR THE IMPLEMENTATION OF THE WORLD AREA FORECAST SYSTEM (WAFS)

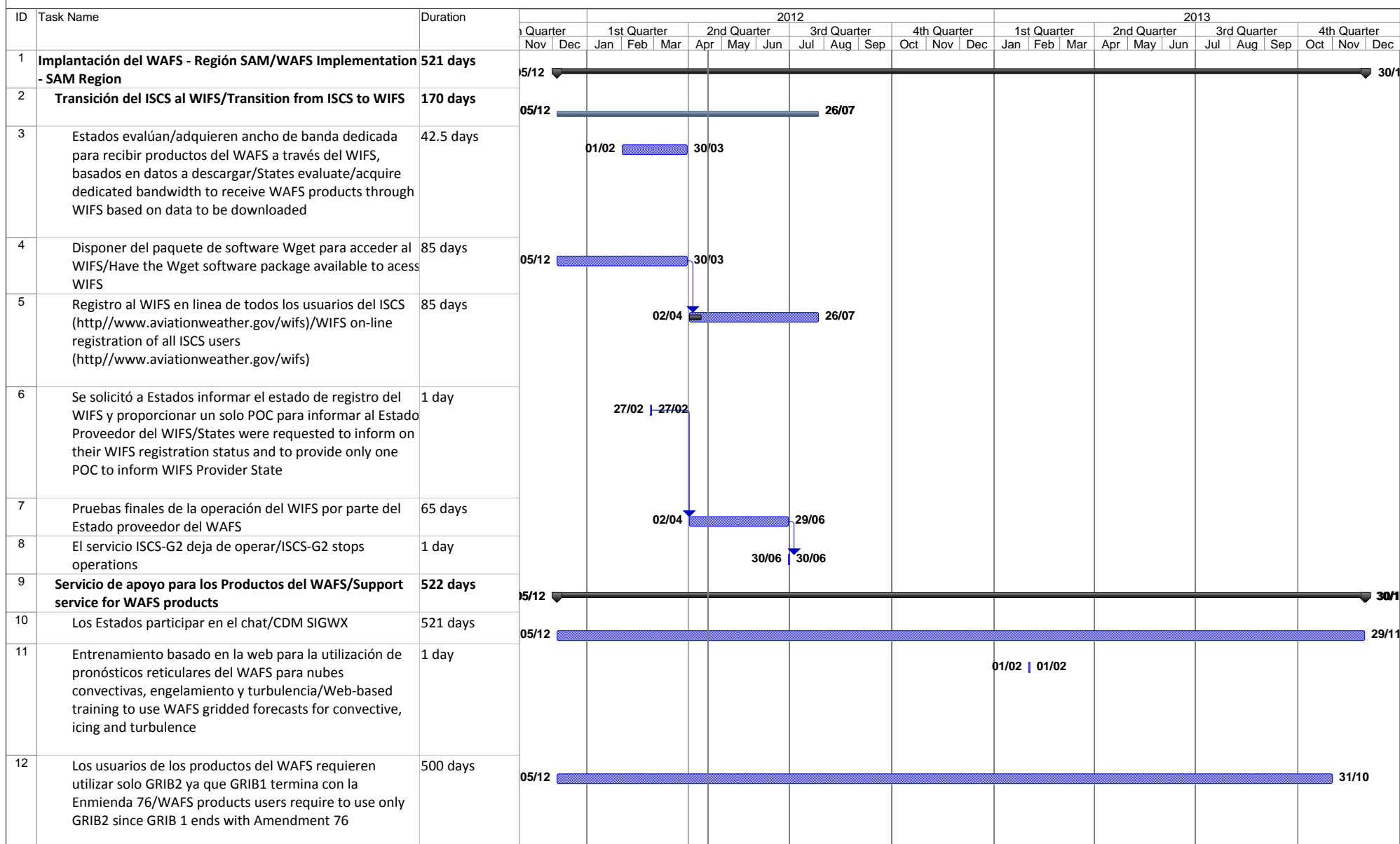
SAM Region	PROJECT DESCRIPTION (DP)	DP N° H1	
Programme	Title of the Project	Start	End
Aeronautical Meteorology <i>(Programme coordinator: Nohora Arias)</i>	Implementation of the world area forecast system (WAFS) <i>Project coordinator: Steven Albersheim (USA)</i> <i>Experts contributing to the project: Dulce Roses (United States) and Matt Strahan (United States)</i>	December 2011	November 2013
Objective	Assist States in the implementation of the WAFS and of the standards and recommended practices of Annex 3 and Part VI – MET of the CAR/SAM ANP, Basic and FASID, with regard to the use of WAFS products, and in the transition from the international satellite communications system (ISCS) to the WAFS Internet File Service (WIFS).		
Scope	The project will comprise all aerodrome offices of the SAM Region listed in Table MET 1A of the CAR/SAM FASID.		
Metrics	Number of States that receive WAFS products through the WIFS on 30 June 2012.		
Strategy	All tasks will be carried out by experts nominated by SAM States participating in the project, led by the Project Coordinator and under the supervision of the MET Programme Coordinator through the “GoTo Meeting” tool. Upon completion of the tasks, the results will be sent to the MET Programme Coordinator as a final document for submission to, and if necessary approval by, the GREPECAS CRPP through the GREPECAS fast-track procedure. For the purpose of collaborative decision-making, meetings will be held with the areas involved.		
Rationale	The introduction of the new WAFS forecasts is an improvement to the WAFS in terms of improved accuracy, timely distribution, and usefulness of forecasts to facilitate airspace optimisation.		
Related projects	<ul style="list-style-type: none"> ➤ Optimisation of the en-route airspace structure ➤ Improvement of ATM situational awareness ➤ Implementation of ATFM ➤ Implementation of the new flight plan format (FPL) ➤ Aeronautical mobile service in the SAM Region 		

Project Deliverables	Relationship with the regional performance-based plan (PFF)	Responsible Party	Status of Implementation ¹	Date of Delivery	Comments
Updated WIFS user's guide	PFF SAM MET 04	MET programme coordinator and project director		November 2013	The guide was developed by the United States as the WAFS provider State. However, it shall be updated by the project.
Operational use of the WIFS	PFF SAM MET 04	MET programme coordinator and project director		30 June 2012	The ISCS will continue to operate until 30 June 2012.
Training for CAR/SAM States on the details and use of the new WAFS forecasts of convective clouds, icing, and turbulence derived from GRIB 2 data	PFF SAM MET 04	MET programme coordinator and project director		November 2012	GREPECAS Conclusion 15/5 requested that the Washington WAFC be invited to provide training to CAR/SAM States, in coordination with WMO.
Resources needed	Funds to conduct the seminar and to keep the WIFS user's guide up to date in English and Spanish. Likewise, the project coordinator and the experts must be provided with the equipment and time necessary to participate in GoTo Meetings.				

¹

Grey Task not started yet
Green Activity being implemented as scheduled
Yellow Activity started with some delay, but will be implemented on time
Red Activity not implemented on time; mitigation measures are required

GRUPO REGIONAL CAR/SAM DE PLANIFICACIÓN Y EJECUCIÓN / CAR/SAM REGIONAL PLANNING AND IMPLEMENTATION GROUP (GREPECAS)
 IMPLANTACION DEL WAFS EN LA REGION SAM / WAFS IMPLEMENTATION IN THE SAM REGION



APPENDIX B2

PROJECT FOR THE IMPLEMENTATION OF THE INTERNATIONAL AIRWAYS VOLCANO WATCH (IAVW)

SAM Region	PROJECT DESCRIPTION (DP)	DP N° H2	
Programme	Title of the project	Start	End
Aeronautical meteorology <i>(Programme coordinator: Nohora Arias)</i>	Implementation of the international airways volcano watch (IAVW) <i>Project coordinator: Jorge Oscar Leguizamón (Argentina):</i> <i>Experts contributing to the project: Olver Boolsen (Argentina), Walter Ríos (Bolivia), Oscar Bermudez (Colombia), Jorge Armoa (Paraguay), Lourdes Martínez (Peru)</i>	December 2011	November 2013
Objective	Assist States in the implementation of the IAVW and the standards and recommended practices of Annex 3 and Part VI – MET of the CAR/SAM ANP, Basic and FASID, concerning the issuance and distribution of en-route weather phenomena likely to affect the safety of aircraft operations, and the evolution of such phenomena in time and space (SIGMET WS, WV, WC, and WR).		
Scope	The project will comprise all meteorological watch offices (MWO) of the SAM Region listed in Table MET 1B of the CAR/SAM FASID, in coordination with the ACCs/FICs/NOFs.		
Metrics	Testing of volcanic ash SIGMETs shall result in continuous improvements once project deliverables are available to the States.		
Strategy	All tasks will be carried out by experts nominated by SAM States participating in the project, led by the Project Coordinator and under the supervision of the MET Programme Coordinator through the “GoToMeeting” tool. Upon completion of the tasks, the results will be sent to the MET Programme Coordinator as a final document for submission to, and if necessary approval by, the GREPECAS CRPP through the GREPECAS fast-track procedure. For the purpose of collaborative decision-making, meetings will be held with the areas involved.		
Rationale	The severity, persistence, and increased frequency of volcanic events with ash dispersion in the SAM Region and their repercussions on the provision of air navigation services call for tools to allow the personnel involved in the different air navigation areas to receive, properly use, and disseminate quality information related to such events. Likewise, based on Japan’s experience, contingency plans are needed not only for this type of events but also for radioactive clouds when more than one FIR in the Region is involved.		
Related projects	<ul style="list-style-type: none"> ➤ Optimisation of the en-route airspace structure ➤ Implementation of the new flight plan format (FPL) ➤ Implementation of ATFM 		

Project Deliverables	Relationship with the performance-based regional plan (PFF)	Responsible Party	Status of Implementation ¹	Date of Delivery	Comments
SIGMET guide revised and updated	PFF SAM MET 03	MET programme coordinator and project director		November 2012	The guide will include MWO responsibility handover procedures.
Regional contingency plan for volcanic activity events	PFF SAM MET 03	MET programme coordinator and project director		November 2012	Prior to its approval by GREPECAS, the ATM, MET, and AIM personnel of the Region shall approve the plan, for which a meeting will be held.
Regional contingency plan for accidental release of radioactive material.	PFF SAM MET 03	MET programme coordinator and project director		November 2013	Prior to its approval by GREPECAS, the ATM, MET, and AIM personnel of the Region shall approve the plan, for which a meeting will be held.
Protocol for the volcanic ash SIGMET exercise	PFF SAM MET 03	MET programme coordinator and project director		November 2012	The protocol for the volcanic ash SIGMET exercise reviewed and updated.
Results of the exercise	PFF SAM MET 03	MET programme coordinator and project director		November 2012	Based on the results, values may be assigned to the quality of SIGMETs and their exchange as compared with previous exercises.
Resources needed	Funds to conduct the meetings and to translate the regional volcanic ash contingency plan and the regional contingency plan in case of accidental release of radioactive material. Likewise, participants must be given facilities to participate in GoTo Meetings.				

¹

Grey Task not started yet
Green Activity being implemented as scheduled
Yellow Activity started with some delay, but will be implemented on time
Red Activity not implemented on time; mitigation measures are required

GRUPO REGIONAL CAR/SAM DE PLANIFICACIÓN Y EJECUCIÓN / CAR/SAM REGIONAL PLANNING AND IMPLEMENTATION GROUP (GREPECAS)
IMPLEMENTACION DE LA VIGILANCIA DE LOS VOLCANES EN LAS AEROVIAS INTERNACIONALES / IMPLEMENTATION OF INTERNATIONAL AIRWAYS VOLCANO WATCH

ID	Task Name	Duration	2011												2012															
			4th Quarter				1st Quarter			2nd Quarter			3rd Quarter			4th Quarter			1st Quarter			2nd Quarter								
			Sep	Oct	Nov	Dec	Jan	Feb	Mar	Apr	May	Jun	Jul	Aug	Sep	Oct	Nov	Dec	Jan	Feb	Mar	Apr								
1	Implantación de la Vigilancia en Aerovías Internacionales (IAVW)/Implementation of International Airways Volcano Watch (IAVW)	838 days																												
2	Revisar y actualizar la Guía SIGMET/Review and update SIGMET Guide	125 days	09/01																											
3	Revisar la Guía SIGMET y proponer mejoras de ser necesario/Review SIGMET Guide and propose improvements as necessary	38 days	09/0129/02																											
4	Crear la lista de puntos de contacto operativos (POC)/Create the list of points of contact (POCs)	22 days	17/0115/02																											
5	Desarrollar los procedimientos de traspaso de responsabilidades de las MWOs/Develop MWO handover procedures	33 days	15/0230/03																											
6	Revisar y mejorar, de ser necesario, el protocolo para el ejercicio SIGMET sobre cenizas volcánicas/Review and improve, as applicable, the protocol for the volcanic ash SIGMET exercise	54 days	16/0129/03																											
7	Definir procedimientos de coordinación entre las áreas afectadas/Define procedures for coordination between affected areas	81 days	81 days																											
8	GoTo Meeting para revisar con la coordinadora del Prrograma MET las tareas/Go-to-Meeting to review tasks with the MET Programme coordinator	3 days	02/05																											
9	Definir procedimientos de transferencia de responsabilidades y de asesoramiento entre el CMRE, las MWO y los ACC/Define procedures for handover and advisory activities between CMRE, MWOs and ACCs	81 days	09/01																											
10	Consolidar la Guía /Consolidate the Guide	5 days																												
11	Ejercicio sobre cenizas volcánicas/Volcanic ash exercise	838 days																												
12	Adaptar el protocolo para el ejercicio sobre ceniza volcánica de los Estados SAM en coordinación con los VAAC de Buenos Aires y Washington/Adjust the volcanic ash protocol for SAM States, in coordination with VAAC Buenos Aires and Washington	19 days																												
13	Llevar a cabo el ejercicio/Carry out the exercise	1 day																												
14	Analizar los resultados del ejercicio y enviarlo a los miembros del proyecto/Analyse the results of the exercise and submit them to project members	20 days																												

GRUPO REGIONAL CAR/SAM DE PLANIFICACIÓN Y EJECUCIÓN / CAR/SAM REGIONAL PLANNING AND IMPLEMENTATION GROUP (GREPECAS)
IMPLEMENTACION DE LA VIGILANCIA DE LOS VOLCANES EN LAS AEROVÍAS INTERNACIONALES / IMPLEMENTATION OF INTERNATIONAL AIRWAYS VOLCANO WATCH

ID	Task Name	Duration	2011												2012										
			4th Quarter				1st Quarter			2nd Quarter			3rd Quarter			4th Quarter				1st Quarter			2nd Quarter		
			Sep	Oct	Nov	Dec	Jan	Feb	Mar	Apr	May	Jun	Jul	Aug	Sep	Oct	Nov	Dec	Jan	Feb	Mar	Apr			
15	Enviar a los Estados los resultados del análisis con acciones de mejora, si fuera el caso/Submit the results of the analysis to States, including improvement measures as applicable	1 day																							
16	Preparar una reunión para revisión y aprobación de la Guía SIGMET/Prepare a meeting to review and approve the SIGMET Guide	4 days																							
17	Llevar a cabo una reunión para revisión y aprobación de la Guía SIGMET/Carry out a meeting to review and approve the SIGMET Guide	3 days																							
18	Adaptar el protocolo para el ejercicio sobre ceniza volcánica de los Estados SAM en coordinación con los VAAC de Buenos Aires y Washington/Adjust the volcanic ash protocol for SAM States, in coordination with VAAC Buenos Aires and Washington	22 days																							
19	Llevar a cabo el ejercicio/Carry out the exercise	1 day																							
20	Analizar los resultados del ejercicio y enviarlo a los miembros del proyecto/Analyse the results of the exercise and submit them to project members	20 days																							
21	Enviar a los Estados los resultados del análisis con acciones de mejora, si fuera el caso/ Submit the results of the analysis to States, including improvement measures as applicable	0 days	11																						
22	Revisar el borrador del Plan regional de contingencia para ceniza volcánica (RAPVA)/Review the draft regional volcanic ash contingency plan (RVACP)	838 days	9																						
23	Preparar la reunión para revisión y aprobación del RVACP/Prepare a meeting to review and approve the RVACP	20 days																							
24	Llevar a cabo una reunión con personal ATM, MET y AIM para revisión y aprobación del RVACP/Carry out a meeting with ATM, MET, and AIM personnel to review and approve the RVACP	1 day																							

GRUPO REGIONAL CAR/SAM DE PLANIFICACIÓN Y EJECUCIÓN / CAR/SAM REGIONAL PLANNING AND IMPLEMENTATION GROUP (GREPECAS)
IMPLEMENTACION DE LA VIGILANCIA DE LOS VOLCANES EN LAS AEROVÍAS INTERNACIONALES / IMPLEMENTATION OF INTERNATIONAL AIRWAYS VOLCANO WATCH

ID	Task Name	Duration	2011												2012									
			4th Quarter				1st Quarter			2nd Quarter			3rd Quarter			4th Quarter				1st Quarter			2nd Quarter	
			Sep	Oct	Nov	Dec	Jan	Feb	Mar	Apr	May	Jun	Jul	Aug	Sep	Oct	Nov	Dec	Jan	Feb	Mar	Apr		
25	Analizar los resultados del ejercicio y enviarlo a los miembros del proyecto/Analyse the results of the exercise and submit them to project members	20 days	09 15/09																					
26	Enviar a los Estados los resultados del análisis con acciones de mejora, si fuera el caso/ Submit the results of the analysis to States, including improvement measures as applicable	1 day																						
27	Adaptar el protocolo para el ejercicio sobre ceniza volcánica de los Estados SAM en coordinación con los VAAC de Buenos Aires y Washington/Adjust the volcanic ash protocol for SAM States, in coordination with VAAC Buenos Aires and Washington	22 days																						
28	Llevar a cabo el ejercicio/Carry out the exercise	1 day																						
29	Analizar los resultados del ejercicio y enviarlo a los miembros del proyecto/ Analyse the results of the exercise and submit them to project members	20 days																						
30	Enviar a los Estados los resultados del análisis con acciones de mejora, si fuera el caso/Submit the results of the analysis to States, including improvement measures as applicable	1 day																						
31	Elaborar el borrador del Plan regional de contingencia para nubes radiactivasa (RAPVA)/Prepare the draft regional radioactive cloud contingency plan (RRCCP)	19 days																						
32	Preparar una reunión con personal ATM, MET y AIM para revisión y aprobación del RAPCR/Prepare a meeting with ATM, MET, and AIM personnel to review and approve the RRCCP	2 days																						
33	Llevar a cabo una reunión con personal ATM, MET y AIM para revisión y aprobación del RAPCR	2 days																						

GRUPO REGIONAL CAR/SAM DE PLANIFICACIÓN Y EJECUCIÓN / CAR/SAM REGIONAL PLANNING AND IMPLEMENTATION GROUP (GREPECAS)
IMPLEMENTACION DE LA VIGILANCIA DE LOS VOLCANES EN LAS AEROVÍAS INTERNACIONALES / IMPLEMENTATION OF INTERNATIONAL AIRWAYS VOLCANO WATCH

ID	Task Name	Duration	2013												
			1st Quarter			2nd Quarter			3rd Quarter			4th Quarter			
			Jan	Feb	Mar	Apr	May	Jun	Jul	Aug	Sep	Oct	Nov	Dec	
1	Implantación de la Vigilancia en Aerovías Internacionales (IAVW)/Implementation of International Airways Volcano Watch (IAVW)	838 days													29/11
2	Revisar y actualizar la Guía SIGMET/Review and update SIGMET Guide	125 days													
3	Revisar la Guía SIGMET y proponer mejoras de ser necesario/Review SIGMET Guide and propose improvements as necessary	38 days													
4	Crear la lista de puntos de contacto operativos (POC)/Create the list of points of contact (POCs)	22 days													
5	Desarrollar los procedimientos de traspaso de responsabilidades de las MWOs/Develop MWO handover procedures	33 days													
6	Revisar y mejorar, de ser necesario, el protocolo para el ejercicio SIGMET sobre cenizas volcánicas/Review and improve, as applicable, the protocol for the volcanic ash SIGMET exercise	54 days													
7	Definir procedimientos de coordinación entre las áreas afectadas/Define procedures for coordination between affected areas	81 days													
8	GoTo Meeting para revisar con la coordinadora del Prrograma MET las tareas/Go-to-Meeting to review tasks with the MET Programme coordinator	3 days													
9	Definir procedimientos de transferencia de responsabilidades y de asesoramiento entre el CMRE, las MWO y los ACC/Define procedures for handover and advisory activities between CMRE, MWOs and ACCs	81 days													
10	Consolidar la Guía /Consolidate the Guide	5 days													
11	Ejercicio sobre cenizas volcánicas/Volcanic ash exercise	838 days													29/11
12	Adaptar el protocolo para el ejercicio sobre ceniza volcánica de los Estados SAM en coordinación con los VAAC de Buenos Aires y Washington/Adjust the volcanic ash protocol for SAM States, in coordination with VAAC Buenos Aires and Washington	19 days													
13	Llevar a cabo el ejercicio/Carry out the exercise	1 day													
14	Analizar los resultados del ejercicio y enviarlo a los miembros del proyecto/Analyse the results of the exercise and submit them to project members	20 days													

GRUPO REGIONAL CAR/SAM DE PLANIFICACIÓN Y EJECUCIÓN / CAR/SAM REGIONAL PLANNING AND IMPLEMENTATION GROUP (GREPECAS)
IMPLEMENTACION DE LA VIGILANCIA DE LOS VOLCANES EN LAS AEROVIAS INTERNACIONALES / IMPLEMENTATION OF INTERNATIONAL AIRWAYS VOLCANO WATCH

ID	Task Name	Duration	2013																							
			1st Quarter						2nd Quarter						3rd Quarter						4th Quarter					
			May	Jun	Jul	Aug	Sep	Oct	Nov	Dec	Jan	Feb	Mar	Apr	May	Jun	Jul	Aug	Sep	Oct	Nov	Dec	Jan	Feb	Mar	Apr
15	Enviar a los Estados los resultados del análisis con acciones de mejora, si fuera el caso/Submit the results of the analysis to States, including improvement measures as applicable	1 day								07/01	07/01															
16	Preparar una reunión para revisión y aprobación de la Guía SIGMET/Prepare a meeting to review and approve the SIGMET Guide	4 days			15/06	20/06																				
17	Llevar a cabo una reunión para revisión y aprobación de la Guía SIGMET/Carry out a meeting to review and approve the SIGMET Guide	3 days				01/08	03/08																			
18	Adaptar el protocolo para el ejercicio sobre ceniza volcánica de los Estados SAM en coordinación con los VAAC de Buenos Aires y Washington/Adjust the volcanic ash protocol for SAM States, in coordination with VAAC Buenos Aires and Washington	22 days															01/08	30/08								
19	Llevar a cabo el ejercicio/Carry out the exercise	1 day																	25/09	25/09						
20	Analizar los resultados del ejercicio y enviarlo a los miembros del proyecto/Analyse the results of the exercise and submit them to project members	20 days																			04/11	29/11				
21	Enviar a los Estados los resultados del análisis con acciones de mejora, si fuera el caso/ Submit the results of the analysis to States, including improvement measures as applicable	0 days																			29/11	29/11				
22	Revisar el borrador del Plan regional de contingencia para ceniza volcánica (RAPVA)/Review the draft regional volcanic ash contingency plan (RVACP)	838 days																								29/11
23	Preparar la reunión para revisión y aprobación del RVACP/Prepare a meeting to review and approve the RVACP	20 days			04/06	29/06																				
24	Llevar a cabo una reunión con personal ATM, MET y AIM para revisión y aprobación del RVACP/Carry out a meeting with ATM, MET, and AIM personnel to review and approve the RVACP	1 day						25/09	25/09																	

GRUPO REGIONAL CAR/SAM DE PLANIFICACIÓN Y EJECUCIÓN / CAR/SAM REGIONAL PLANNING AND IMPLEMENTATION GROUP (GREPECAS)
IMPLEMENTACION DE LA VIGILANCIA DE LOS VOLCANES EN LAS AEROVIAS INTERNACIONALES / IMPLEMENTATION OF INTERNATIONAL AIRWAYS VOLCANO WATCH

ID	Task Name	Duration	2013																							
			1st Quarter						2nd Quarter						3rd Quarter						4th Quarter					
			May	Jun	Jul	Aug	Sep	Oct	Nov	Dec	Jan	Feb	Mar	Apr	May	Jun	Jul	Aug	Sep	Oct	Nov	Dec	Jan	Feb	Mar	Apr
25	Analizar los resultados del ejercicio y enviarlo a los miembros del proyecto/Analyse the results of the exercise and submit them to project members	20 days						05/11		30/11																
26	Enviar a los Estados los resultados del análisis con acciones de mejora, si fuera el caso/ Submit the results of the analysis to States, including improvement measures as applicable	1 day							07/01		07/01															
27	Adaptar el protocolo para el ejercicio sobre ceniza volcánica de los Estados SAM en coordinación con los VAAC de Buenos Aires y Washington/Adjust the volcanic ash protocol for SAM States, in coordination with VAAC Buenos Aires and Washington	22 days															01/08		30/08							
28	Llevar a cabo el ejercicio/Carry out the exercise	1 day																	25/09		25/09					
29	Analizar los resultados del ejercicio y enviarlo a los miembros del proyecto/ Analyse the results of the exercise and submit them to project members	20 days																			04/11					29/11
30	Enviar a los Estados los resultados del análisis con acciones de mejora, si fuera el caso/Submit the results of the analysis to States, including improvement measures as applicable	1 day																								
31	Elaborar el borrador del Plan regional de contingencia para nubes radiactivas (RAPVA)/Prepare the draft regional radioactive cloud contingency plan (RRCCP)	19 days									04/02		28/02													
32	Preparar una reunión con personal ATM, MET y AIM para revisión y aprobación del RAPCR/Prepare a meeting with ATM, MET, and AIM personnel to review and approve the RRCCP	2 days												28/03		29/03										
33	Llevar a cabo una reunión con personal ATM, MET y AIM para revisión y aprobación del RAPCR	2 days																								

APPENDIX B3

PROJECT FOR THE IMPLEMENTATION OF THE MET INFORMATION QUALITY MANAGEMENT SYSTEM (QMS/MET)

SAM Region	PROJECT DESCRIPTION (DP)	DP N° H3	
Programme	Title of the Project	Start	End
Aeronautical Meteorology <i>(Programme coordinator: Nohora Arias)</i>	Implementation of the QMS/MET <i>Project coordinator: Ricardo Reyes (Peru)</i> <i>Experts contributing to the project: Olver Boolsen (Argentina), Arthur Gonçalves Ferreira (Brazil), Xenia Guardia (Panama), Roberto Salinas (Paraguay), Lourdes Martínez (Peru)</i>	December 2011	December 2013
Objective	Assist States in the implementation of the QMS/MET and certification where applicable. Update and improve the QMS/MET guide to assist States in the production of MET documentation under ISO 9001: 2008, the implementation of Annex 3 and Part VI – MET of the CAR/SAM ANP, and the conduction of audit trials.		
Scope	Establishment and application of a duly organised MET service quality system at each MET unit of all SAM aerodromes listed in the CAR/SAM ANP, and compliance with the standards and recommended practices of Annex 3 and the CAR/SAM ANP, Vol. I, Basic, and Vol. II, FASID, Part VI – MET.		
Metrics	Number of AOP aerodromes certified under ISO 9000: 2008, and list of aerodromes and their status of implementation of QMS/MET in each of their units.		
Strategy	All tasks will be carried out by experts nominated by SAM States participating in the project, led by the Project Coordinator and under the supervision of the MET Programme Coordinator through the “GoToMeeting” tool. Upon completion of the tasks, the results will be sent to the MET Programme Coordinator as a final document for submission to, and if necessary approval by, the GREPECAS CRPP through the GREPECAS fast-track procedure. For the purpose of collaborative decision-making, meetings will be held with the areas involved.		
Rationale	More accurate and timely meteorological information will optimise flight path planning and prediction, thus improving ATM safety and efficiency; improved aerodrome reports and forecasts will optimise the use of available aerodrome capacity; and meteorological information will minimise the environmental impact of air traffic. Performance management will be an important part of meteorological information quality assurance.		
Related projects	<ul style="list-style-type: none"> ➤ Automation ➤ Improved ATM situational awareness 		

Project Deliverables	Relationship with the regional performance-based plan (PFF)	Responsible Party	Status of Implementation ¹	Date of Delivery	Comments
Revised and updated QMS/MET guide.	PFF SAM MET 02, 03, and 04	MET programme coordinator and project director		November 2013	The practical guide will facilitate the drafting of ISO 9000: 2008 documentation by MET service provider States.
Development of a State survey on MET personnel	PFF SAM MET 02, 03, and 04	MET programme coordinator and project director		November 2012	One of the main problems facing MET service provider States is the lack of personnel with the competencies required by WMO and ICAO. State requirements will be officially communicated to ICAO contracting States.
Table of compliance with Annex 3 standards and MET procedures	PFF SAM MET 02, 03, and 04	MET programme coordinator and project director		August 2012	In the first instance, strict compliance with ICAO standards related to the provision of MET services will be monitored.
Table of compliance with the CAR/SAM ANP, Part VI - MET.	PFF SAM MET 02, 03, and 04	MET programme coordinator and project director		August 2012	Close monitoring of strict compliance with Part VI- MET of the CAR/SAM ANP.
Audit trials	PFF SAM MET 02, 03, and 04	MET programme coordinator and project director		November 2013	Audit trials will be conducted to identify QMS/MET implementation issues and to propose strategies for their resolution.
Resources needed	Funds to conduct audit trials. States could cover the cost of trials by their lead auditors, since the experience obtained will contribute to improve the system. Likewise, participants must be given facilities to participate in GoTo Meetings.				

¹

<i>Grey</i>	<i>Task not started yet</i>
<i>Green</i>	<i>Activity being implemented as scheduled</i>
<i>Yellow</i>	<i>Activity started with some delay, but will be implemented on time</i>
<i>Red</i>	<i>Activity not implemented on time; mitigation measures are required</i>

GRUPO REGIONAL CAR/SAM DE PLANIFICACIÓN Y EJECUCIÓN / CAR/SAM REGIONAL PLANNING AND IMPLEMENTATION GROUP (GREPECAS)
 IMPLANTACION DEL QMS/MET EN LA REGION SAM / QMS/MET IMPLEMENTATION IN THE SAM REGION

ID	Task Name	Duration																									
			2011				2012				2013																
			3rd Quarter	4th Quarter	1st Quarter	2nd Quarter	3rd Quarter	4th Quarter	1st Quarter	2nd Quarter	3rd Quarter	4th Quarter	1st Quarter	2nd Quarter	3rd Quarter	4th Quarter											
Sep	Oct	Nov	Dec	Jan	Feb	Mar	Apr	May	Jun	Jul	Aug	Sep	Oct	Nov	Dec	Jan	Feb	Mar	Apr	May	Jun	Jul	Aug	Sep	Oct	Nov	Dec
1	Implantación del QMS/MET - Región SAM/QMS/MET Implementation - SAM Region	522 days																									
2	Actualización de la Guía QMS/MET/Update of QMS/MET Guide	383 days																									
3	Actualización de la Guía con respecto a las competencias del personal MET/Update of the Guide with regard to MET personnel competencies	57 days																									
4	Actualización de la Guía con respecto a la Enmienda 76 del Anexo 3/Update of the Guide with respect to Amendment 76 to Annex 3	22 days																									
5	Requisitos para la implantación del QMS/MET/QMS/MET implementation requirements	173 days																									
6	Tabla de cumplimiento a las normas del Anexo 3 de cada uno de los Estados/Table of compliance to Annex 3 standards in each State	149 days																									
7	Tablas de cumplimiento (3) de la Parte VI - MET del ANP CAR/SAM/Tables of compliance (3) of Part VI - MET of CAR/SAM ANP	149 days																									
8	Plan de implantación del QMS/MET en los aeródromos SAM del ANP CAR/SAM/QMS/MET implementation plan in CAR/SAM ANP SAM aerodromes	1 day																									
9	Esquema documentario MET aprobado por la alta dirección de la Norma ISO 9001:2008/Documentation scheme approved by the senior management of Standard ISO 9001:2008	149 days																									
10	Tareas adicionales en apoyo a la implantación edel QMS/MET/Additional tasks in support of QMS/MET implementation	522 days																									
11	Actualización permanente del punto de contacto (POC) QMS/MET/Pemanent update of QMS/MET points of contact	521 days																									
12	GoTo Meetings para apoyar a los Estados que requieran apoyo adicional al suministrado hasta la fecha/GoToMeetings to support States requiring additional support to the one so far provided	521 days																									
13	Ensayos de auditoría a tres (3) Estados de la Región/Audit trials to three (3) States of the Region	10 days																									
14	Reporte de problemas para análisis y estrategias de solución/Report of problems for analysis and solution strategies	149 days																									

GRUPO REGIONAL CAR/SAM DE PLANIFICACIÓN Y EJECUCIÓN / CAR/SAM REGIONAL PLANNING AND IMPLEMENTATION GROUP (GREPECAS)
IMPLANTACION DEL QMS/MET EN LA REGION SAM / QMS/MET IMPLEMENTATION IN THE SAM REGION

ID	Task Name	Duration	2011												2012				2013																																																																																																																																																																																																																																																																																																																																																																																																																																																																																																																																																																																																																																																																																																																																																																																																																																																																																																																																																																																																																																																																																																																																																																																																																																																																																																																																																																																																																																									
			3rd Quarter				4th Quarter				1st Quarter				2nd Quarter				3rd Quarter				4th Quarter																																																																																																																																																																																																																																																																																																																																																																																																																																																																																																																																																																																																																																																																																																																																																																																																																																																																																																																																																																																																																																																																																																																																																																																																																																																																																																																																																																																																																																					
			Sep	Oct	Nov	Dec	Jan	Feb	Mar	Apr	May	Jun	Jul	Aug	Sep	Oct	Nov	Dec	Jan	Feb	Mar	Apr	May	Jun	Jul	Aug	Sep	Oct	Nov	Dec																																																																																																																																																																																																																																																																																																																																																																																																																																																																																																																																																																																																																																																																																																																																																																																																																																																																																																																																																																																																																																																																																																																																																																																																																																																																																																																																																																																																																														
15	Supervisión y revisión continua del QMS/MET en los aeródromos SAM del ANP CAR/SAM/Continuous supervision and revision of QMS/MET in SAM aerodromes of CAR/SAM ANP	149 days													05/01																																																																																																																																																																																																																																																																																																																																																																																																																																																																																																																																																																																																																																																																																																																																																																																																																																																																																																																																																																																																																																																																																																																																																																																																																																																																																																																																																																																																																																													</

APPENDIX B4

PROJECT FOR THE OPTIMISATION OF OPMET EXCHANGE, INCLUDING SIGMETs (WS, WV, WC, AND WR), WARNINGS AND METEOROLOGICAL ALERTS

SAM Region	PROJECT DESCRIPTION (DP)	DP N° H4	
Programme	Title of the project	Start	End
Aeronautical meteorology (Programme coordinator: Nohora Arias)	<i>Optimisation of OPMET exchange, including SIGMETs (WS, WV, WC, and WR), warnings and meteorological alerts</i> <i>Project coordinator: Daniel Martins Neiva Filho (Brazil)</i> <i>Experts contributing to the project: Aníbal Castro Cárdenas (Bolivia), Valdeci Donizeti Juliar da Franca (Brazil), Domingo Torres (Ecuador), Celestino Lamboglia (Panama), Miguel Vara (Peru), Warsodikromo Truusje Soetinie (Suriname), Tjiettra Akloe (Suriname), José Ramón Pereira Bastida (Venezuela)</i>	December 2011	November 2013
Objective	Achieve at least 95% efficiency in the preparation and dissemination of OPMET information to SAM States by 31 November 2013		
Scope	Correct preparation and timely dissemination of OPMET information involves all MET service units [(EMA(s), OMA(s), MWO(s) and OPMET data banks] of all SAM aerodromes listed in the CAR/SAM ANP.		
Metrics	The percentage of OPMET messages received on time at the Brasilia International OPMET Data Bank (according to Annex 3, Appendix 10, OPMET control considers as messages received those OPMET messages with transit times of 10 minutes) and verification of proper and standard production (quality) of OPMET information at MET services [(EMA(s), OMA(s), and MWO(s)] (Annex 3, in Appendices 3, 4, 5, and 6, contains the (OPMET) message planning tables.		
Strategy	All tasks will be carried out by experts nominated by SAM States (Points of Contact – POC) and by experts contributing to the project, led by the Project Coordinator and under the supervision of the MET Programme Coordinator through State letters sent by the ICAO Lima Office, by e-mail, and the “GoToMeeting” tool. Upon completion of the tasks, the results will be sent to the MET Programme Coordinator as a final document for submission to, and if necessary approval by, the GREPECAS CRPP through the GREPECAS fast-track procedure. For the purpose of collaborative decision-making, meetings will be held with the areas involved.		
Rationale	More timely meteorological information will optimise flight path planning and prediction, thus improving ATM system safety and efficiency, pursuant to GREPECAS Conclusion 12/64 (CAR/SAM OPMET EXCHANGE CONTROLS). Meteorological information will also minimise the environmental impact of air traffic.		
Related projects	<ul style="list-style-type: none"> ➤ Automation ➤ Implementation of ATFM ➤ Installation of AMHS at MET units having an international OPMET requirement ➤ Implementation of the MET information quality management system (QMS/MET) ➤ Enhanced ATM situational awareness ➤ Implementation of the new flight plan format (FPL) 		

Project Deliverables	Relationship with the performance-based regional plan (PFF) ¹	Responsible Party	Status of Implementation ²	Date of Delivery	Comments
OPMET guide revised and updated	PFF SAM MET 02	MET programme coordinator and project coordinator		September 2012	The OPMET guide prepared by the SAM Office will include procedures for preparing OPMET data and tables containing the AFTN addresses to which OPMET information must be sent worldwide in accordance with the CAR/SAM FASID, thus facilitating the preparation and issuance of MET messages.
Results of coordinated controls of annual SIGMET WV tests	PFF SAM MET 02	POC and BR OPMET data bank		February 2013	The measurement of SIGMET WV messages received on time at the Brasilia International OPMET Data Bank will give the actual percentage of OPMET data, and the verification of the proper preparation of SIGMET WV messages at MWO(s) will permit an assessment of OPMET information quality.
Results of the analysis of coordinated controls of annual SIGMET WV tests	PFF SAM MET 02	MET programme coordinator and project coordinator		May 2013	The results obtained from the coordinated controls of annual SIGMET WV tests will allow programme and project coordinators to adopt, if necessary, corrective action for subsequent coordinated controls of OPMET information, including SIGMETs (WS, WV, WC, and WR), warnings and meteorological alerts.
Results of coordinated controls of OPMET information, including SIGMETs (WS, WV, WC, and WR), warnings and meteorological alerts	PFF SAM MET 02	POC and BR OPMET data bank		August 2013	Timely measurements at the Brasilia International OPMET data bank will provide the actual percentage of OPMET data received, and the verification of the proper preparation of OPMET information at MET services [(EMA(s), OMA(s), and MWO(s))] will permit to assess the quality of OPMET information.
Results of the analysis of coordinated controls of OPMET information, including SIGMETs (WS, WV, WC, and WR), warnings and meteorological alerts	PFF SAM MET 02	MET programme coordinator and project coordinator		September 2013	The results obtained from coordinated controls of OPMET information, including SIGMETs (WS, WV, WC, and WR), warnings and meteorological alerts will give programme and project coordinators an idea of project results.

Project Deliverables	Relationship with the performance-based regional plan (PFF) ¹	Responsible Party	Status of Implementation ²	Date of Delivery	Comments
Final project report	PFF SAM MET 02	MET programme coordinator and project coordinator		November 2013	The purpose of the final project report to be submitted by the programme coordinator is to enable the Lima SAM Office to check the achievements of the project and propose to the States future measures to maintain the level attained through OPMET controls.
Resources needed	Funds for meetings with project members in order to assess the results and propose corrective actions. States could use their human resources to conduct the foreseen OPMET tests and controls, and, if necessary, cover the financial costs, since the experience gained will result in an improvement of their own systems. Likewise, participants must be given facilities to participate in GoToMeetings.				

¹ Air navigation system Performance-Based Implementation Plan for the SAM Region

²

Grey Task not started yet

Green Activity being implemented as scheduled

Yellow Activity started with some delay, but will be implemented on time

Red Activity not implemented on time; mitigation measures are required






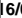

GRUPO REGIONAL CAR/SAM DE PLANIFICACIÓN Y EJECUCIÓN / CAR/SAM REGIONAL PLANNING AND IMPLEMENTATION GROUP (GREPECAS)
OPTIMIZACIÓN DEL INTERCAMBIO OPMET, SIGMET, AVISOS Y ALERTAS MET / OPTIMIZATION OF OPMET EXCHANGE , SIGMET, MET ADVISORIES AND WARNINGS

ID	Task Name	Duration	2012												2013											
			1st Quarter			2nd Quarter			3rd Quarter			4th Quarter			1st Quarter			2nd Quarter			3rd Quarter			4th Quarter		
			Jan	Feb	Mar	Apr	May	Jun	Jul	Aug	Sep	Oct	Nov	Dec	Jan	Feb	Mar	Apr	May	Jun	Jul	Aug	Sep	Oct	Nov	Dec
1	Optimización del intercambio OPMET, incluyendo SIGMET (WS, WV, WC y WR), avisos y alertas Meteorológicas/Optimization of OPMET exchange, including SIGMETs (WS, WV, WC and WR), meteorological warning and alerts	480 days																								
2	Revisar y actualizar la Guía OPMET/Review and update the OPMET Guide	129 days																								
3	Revisar la Guía OPMET y proponer mejoras de ser necesario/Review the OPMET Guide and propose improvements if necessary	38 days																								
4	Actualizar la lista de puntos de contacto operativos OPMET (POC)/Update the list of OPMET operational points of contact (POC)	22 days																								
5	Revisar y, de ser necesario, proponer mejoras a la tabla para el control OPMET/Review and, if necessary, propose improvements to the table for OPMET control	33 days																								
6	GoTo Meeting para revisar con la coordinadora del Programa MET las tareas/GoToMeeting for revision of the tasks with MET Programme Coordinator	3 days																								
7	Consolidar la Guía/Consolidate the Guide	5 days																								
8	Controles de intercambio OPMET de los Estados SAM/SAM States' OPMET exchange controls	305 days																								
9	Control OPMET 2012/OPMET Control 2012	43 days																								
10	Los Estados SAM llevan a cabo el control OPMET/SAM States carry out the OPMET control	7 days																								
11	Cada Estado evalúa los resultados del control OPMET y lo envía a los demás Estados/Each State evaluates the results of OPMET control and sends it to the other States	11 days																								
12	Cada Estado envía los resultados del control y de la evaluación al director del Proyecto/Each State submits the results of the control and the evaluation to the Project director	1 day																								
13	El director del Proyecto analiza y envía al coordinador del Programa MET los resultados del control y de la evaluación/The Project director analyzes and submits to the MET Programme coordinator the results of the control and evaluation	8 days																								

GRUPO REGIONAL CAR/SAM DE PLANIFICACIÓN Y EJECUCIÓN / CAR/SAM REGIONAL PLANNING AND IMPLEMENTATION GROUP (GREPECAS)
OPTIMIZACIÓN DEL INTERCAMBIO OPMET, SIGMET, AVISOS Y ALERTAS MET / OPTIMIZATION OF OPMET EXCHANGE , SIGMET, MET ADVISORIES AND WARNINGS

ID	Task Name	Duration	2012												2013											
			1st Quarter			2nd Quarter			3rd Quarter			4th Quarter			1st Quarter			2nd Quarter			3rd Quarter			4th Quarter		
			Jan	Feb	Mar	Apr	May	Jun	Jul	Aug	Sep	Oct	Nov	Dec	Jan	Feb	Mar	Apr	May	Jun	Jul	Aug	Sep	Oct	Nov	Dec
14	El coordinador del Programa MET analiza los resultados de las tareas realizadas/The MET Programme coordinator analyzes and results of the tasks performed	7 days							20/07	30/07																
15	GoToMeeting para revisar los resultados generales del control OPMET/GoToMeeting to review general results of OPMET control	1 day							31/07	31/07																
16	La Oficina SAM envía a los Estados los resultados del control con acciones de mejora, si fuera el caso/SAM Office submits to States the results of the control with improvement actions, if necessary	1 day							02/08	02/08																
17	Control OPMET 2013/OPMET Control 2013	41 days																10/06								
18	Los Estados SAM llevan a cabo el control OPMET/SAM States carry out the OPMET control	7 days																10/06	17/06							
19	Cada Estado evalúa los resultados del control OPMET y lo envía a los demás Estados/Each State evaluates the results of OPMET control and sends it to the other States	9 days																19/06	01/07							
20	Cada Estado evalúa los resultados del control OPMET y lo envía a los demás Estados/Each State evaluates the results of OPMET control and sends it to the other States	1 day																05/07	05/07							
21	Cada Estado envía los resultados del control y de la evaluación al director del Proyecto/Each State submits the results of the control and the evaluation to the Project director	9 days																10/07	22/07							
22	El coordinador del Programa MET analiza los resultados de las tareas realizadas/The MET Programme coordinator analyzes and results of the tasks performed	6 days																23/07	30/07							
23	GoToMeeting para revisar los resultados generales del control OPMET/GoToMeeting to review general results of OPMET control	1 day																31/07	31/07							
24	La Oficina SAM envía a los Estados los resultados del control con acciones de mejora, si fuera el caso/SAM Office submits to States the results of the control with improvement actions, if necessary	1 day																02/08	02/08							

GRUPO REGIONAL CAR/SAM DE PLANIFICACIÓN Y EJECUCIÓN / CAR/SAM REGIONAL PLANNING AND IMPLEMENTATION GROUP (GREPECAS)
OPTIMIZACIÓN DEL INTERCAMBIO OPMET, SIGMET, AVISOS Y ALERTAS MET / OPTIMIZATION OF OPMET EXCHANGE , SIGMET, MET ADVISORIES AND WARNINGS

ID	Task Name	Duration	2012												2013											
			1st Quarter			2nd Quarter			3rd Quarter			4th Quarter			1st Quarter			2nd Quarter			3rd Quarter			4th Quarter		
			Jan	Feb	Mar	Apr	May	Jun	Jul	Aug	Sep	Oct	Nov	Dec	Jan	Feb	Mar	Apr	May	Jun	Jul	Aug	Sep	Oct	Nov	Dec
25	Control de datos OPMET recibidos en el Banco internacional de datos OPMET (IODB) de Brasilia/OPMET Data Control received in the Brasilia International OPMET databank (IODB)	435 days	10/03  31/10																							
26	Primer control OPMET del IODB de Brasilia en 2012/First OPMET control of the Brasilia IODB in 2012	37 days	10/03  30/04																							
27	El banco lleva a cabo el control de datos OPMET recibidos/The Bank carries out the control of the OPMET data received	6 days	10/03  16/03																							
28	El Banco analiza y evalúa el primer control/The Bank analyzes and evaluates the first control	9 days	19/03  29/03																							
29	El director del Proyecto analiza y envía al coordinador del Programa MET los resultados del control y de la evaluación/The Project director analyzes and submits to the MET Programme coordinator the results of the control and evaluation	6 days	02/04  09/04																							
30	La Oficina SAM envía a los Estados los resultados del control con acciones de mejora, si fuera el caso/SAM Office submits to States the results of the control with improvement actions, if necessary	1 day	16/04  16/04																							
31	Finalización del Proyecto 31 de octubre de 2013 (Estos controles se realizan anualmente en Marzo, Junio, Septiembre, Diciembre)/End of Project 31 October 2013 (These controls are carried out annually in March, June, September & December)	435 days	10/03  31/10																							