



Organización de Aviación Civil Internacional

Oficina Regional Sudamericana

**Octavo Taller/Reunión del Grupo de Implantación SAM
(SAM/IG/7) – Proyecto Regional RLA/06/901**

Lima, Perú, 10 al 14 de Octubre de 2011

SAM/IG/8-NE/18

19/9/11

**Cuestión 6 del
Orden del Día:**

Evaluación de los requisitos operacionales para determinar la implantación de mejoras de las capacidades de comunicaciones, navegación y vigilancia (CNS) para operaciones en ruta y área terminal

GUÍA DE IMPLANTACIÓN GBAS

(Presentada por la Secretaría)

| RESUMEN | |
|---|----------------------------------|
| Esta nota de estudio presenta un borrador de Guía de Implantación del Sistema de Aumentación Basado en Tierra (GBAS) para utilización de los Estados de la región SAM con el fin de que el mismo sea revisado. | |
| Referencias: <ul style="list-style-type: none">• Anexo 10, Volumen 1, al Convenio de la OACI;• ICAO Doc 9849 –Manual GNSS; e• ICAO NSP Manual on Ionospheric Effects on GNSS Aviation Operations – December/2006 | |
| Objetivo estratégico de la OACI: | <i>A – Seguridad operacional</i> |

1 Antecedentes

1.1 En la reunión de la SAM/IG/7, la reunión tomó nota del ofrecimiento de Brasil para realizar una guía para la implementación de sistema GBAS para la Región SAM.

1.2 Esa acción se refiere a la Actividad A2.2 - Desarrollar guía práctica para la implementación del sistema GBAS – del proyecto Sistemas de navegación aérea en apoyo a la PBN del Programa PBN.

2. Acción Sugerida

2.1 Se invita a la reunión a tomar nota de la Guía presentada en el **Apéndice** y proponer los respectivos comentarios.

APPENDIX



INTERNATIONAL CIVIL AVIATION ORGANIZATION

**GUIDE FOR GROUND BASED AUGMENTATION
SYSTEM IMPLEMENTATION**

Draft

Foreword

The Ground Based Augmentation System (GBAS) is being developed and implemented in several countries and a large amount of information is being generated. This guide intends to be a basis for countries interested in implementation of GBAS.

Considering the continuous development of GBAS, this manual should be considered a living document to be constantly updated.

Comments are well appreciated and should be addressed to mail@lima.icao.int.

TABLE OF CONTENTS

| | | |
|---------|---|----|
| 1 | Introduction..... | 2 |
| 2 | Global Navigation Satellite System (GNSS)..... | 4 |
| 2.1 | Core Satellite Constellations..... | 4 |
| 2.1.1 | Global Positioning System (GPS)..... | 4 |
| 2.1.2 | Globalnaya Navigatsionnay Sputnikovaya Sistema (GLONASS)..... | 5 |
| 2.2 | GNSS Receivers..... | 6 |
| 2.3 | Augmentation Systems..... | 7 |
| 2.3.1 | Aircraft-Based Augmentation System (ABAS)..... | 7 |
| 2.3.2 | Ground-Based Regional Augmentation System (GRAS)..... | 8 |
| 2.3.3 | Satellite-Based Augmentation System (SBAS)..... | 9 |
| 3 | Ground Based Augmentation System (GBAS)..... | 10 |
| 3.1 | General description..... | 10 |
| 3.2 | Benefits of GBAS..... | 11 |
| 3.2.1 | Reduction of critical and sensitive areas..... | 11 |
| 3.2.2 | Curved approach..... | 11 |
| 3.2.3 | Positioning service..... | 12 |
| 3.2.4 | Provision of service in several runways at the same airport..... | 12 |
| 3.2.5 | Provision of several approach glide angles and displaced threshold..... | 12 |
| 3.2.6 | Guided missed approach..... | 12 |
| 3.2.7 | Adjacent airports use..... | 12 |
| 3.3 | GBAS basic technical information..... | 12 |
| 3.3.1 | Data content..... | 14 |
| 3.3.1.1 | Type 1 message..... | 14 |
| 3.3.1.2 | Type 2 message..... | 15 |
| 3.3.1.3 | Type 4 message..... | 16 |
| 3.3.2 | Channel number..... | 16 |
| 3.3.3 | GBAS receiver..... | 17 |
| 3.3.4 | Siting considerations..... | 17 |
| 3.3.5 | Frequency interference issues..... | 18 |
| 3.3.6 | Influence of Ionosphere..... | 19 |
| 3.4 | Development of GBAS..... | 21 |
| 3.4.1 | International GBAS Working Group (IGWG)..... | 21 |
| 3.4.2 | GBAS station manufacturers..... | 21 |
| 3.4.3 | GBAS receiver manufacturers..... | 22 |
| 3.4.4 | GBAS in aircraft manufacturers..... | 22 |
| 3.5 | Considerations for GBAS implementation..... | 22 |
| 4 | List of acronyms..... | 25 |
| 5 | List of references in the document..... | 27 |
| 6 | List of reference documents..... | 28 |

Guide for Ground Based Augmentation System Implementation

1 Introduction

All navigation and approach aids (NAVAIDs) must meet the requirements of accuracy, continuity, availability and integrity specified to each phase of flight.

As the air traffic flow increased, the conventional NAVAIDs were not able to provide the flexibility in airspace to absorb this growth fitting the needs of the requirements referred so above.

The development, initially by the United States, of a global system providing positioning and timing services allowed the introduction of an alternative to those conventional NAVAIDs with the possibility of using new concepts in air navigation capable of satisfying the new needs of the aeronautical community.

As the development of new concepts and systems occurred, the International Civil Aviation Organization (ICAO) introduced the Global Navigation Satellite System (GNSS), which allows navigation in all phases of flight and precision approach and, according to Volume 1 of Annex 10 to the Convention on International Civil Aviation (from here on referred to as Annex 10, vol.1), is comprised by:

- Global Positioning System (GPS) that provides the Standard Positioning System (SPS);
- Global Navigation Satellite System (GLONASS) that provides the Channel of Standard Accuracy (CSA) navigation signal;
- Aircraft-based augmentation system (ABAS);
- Ground-based augmentation system (GBAS);
- Ground-based regional augmentation system (GRAS); and
- Aircraft GNSS receivers.

The list above presents position generation systems (the core constellations), receivers (with these two groups always present in navigation), and augmentation systems, which will be present when the core constellations cannot support alone the requirements for the phase of flight.

| Typical operation | Accuracy horizontal 95% | Accuracy vertical 95% | Integrity | Time-to-alert | Continuity | Availability |
|---|-------------------------------|------------------------------------|--|---------------|---|--------------------|
| En-route | 3.7 km (2.0 NM) | N/A | $1 - 1 \times 10^{-7}/h$ | 5 min | $1 - 1 \times 10^{-4}/h$ to $1 - 1 \times 10^{-5}/h$ | 0.99 to 0.99999 |
| En-route, Terminal | 0.74 km (0.4 NM) | N/A | $1 - 1 \times 10^{-7}/h$ | 15 s | $1 - 1 \times 10^{-4}/h$ to $1 - 1 \times 10^{-5}/h$ | 0.99 to 0.99999 |
| Initial approach, Intermediate approach, Non-precision approach (NPA), Departure | 220 m (720 ft) | N/A | $1 - 1 \times 10^{-7}/h$ | 10 s | $1 - 1 \times 10^{-4}/h$ to $1 - 1 \times 10^{-5}/h$ | 0.99 to 0.99999 |
| Approach operations with vertical guidance (APV-I) | 16.0 m (52 ft) | 20 m (66 ft) | $1 - 2 \times 10^{-7}$ in any approach | 10 s | $1 - 8 \times 10^{-6}$ per 15 s | 0.99 to 0.99999 |
| Approach operations with vertical guidance (APV-II) | 16.0 m (52 ft) | 8.0 m (26 ft) | $1 - 2 \times 10^{-7}$ in any approach | 6 s | $1 - 8 \times 10^{-6}$ per 15 s | 0.99 to 0.99999 |
| Category I precision approach | 16.0 m (52 ft) | 6.0 m to 4.0 m (20 ft to 13 ft) | $1 - 2 \times 10^{-7}$ in any approach | 6 s | $1 - 8 \times 10^{-6}$ per 15 s | 0.99 to 0.99999 |

Table 1 – Signal-in-space performance requirements (Annex 10, vol. 1, table 3.7.2.4-1)

2 Global Navigation Satellite System (GNSS)

As was briefly presented in the introduction, GNSS comprises the core constellations (GPS and GLONASS), ABAS, GBAS, GRAS and GNSS receivers.

In order to increase the understanding of GBAS and put it into the GNSS context, it is important to describe the other components of the system.

2.1 Core Satellite Constellations

2.2

This is, together with the receivers, the basic part of the GNSS. According to Annex 10, two core satellite constellations have Standards and Recommended Practices (SARPs) incorporated: the GPS from the United States of America and the GLONASS from the Russian Federation. There are two other constellations under development: GALILEO (European) and COMPASS (Chinese).

GPS and GLONASS have the capability to provide accurate position and time information worldwide. The accuracy provided by both systems meets aviation requirements for en-route through non-precision approach, but not the requirements for precision approach.

Considering the importance of the core constellations, according to Annex 10, any change in the SARPs that requires the replacement or update of GNSS equipment requires a six-year advance notice. Similarly, a six-year notice is required of a core or augmentation system provider who plans to terminate the service provided.

2.2.1 Global Positioning System (GPS)

GPS is a satellite-based radio navigation system which uses precise range measurements from GPS satellites to determine position and time anywhere in the world. The system is operated for the government of the United States by the United States Air Force. In 1994, the United States offered the GPS standard positioning service (SPS) to support the needs of international civil aviation and the ICAO Council accepted the offer.

The design of GPS space segment is comprised of 24 satellites in six orbital planes. The satellites operate in near-circular 20 200 km (10 900 NM) orbits at an inclination angle of 55 degrees to the equator; each satellite completes an orbit in approximately 12 hours. The GPS control segment has five monitor stations and four ground antennas with uplink capabilities. The monitor stations use a GPS receiver to passively track all satellites in view and accumulate ranging data. The master control station processes this information to determine satellite clock and orbit states and to update the navigation message of each satellite. This updated information is transmitted to the satellites via the ground antennas, which are also used for transmitting and receiving health and control information.

The navigation data transmitted by the satellites shall include the necessary information to determine satellite time of transmission, satellite position, satellite health, satellite clock correction, propagation delay effects, time transfer to UTC and constellation status.

GPS SPS, which utilizes a coarse acquisition (C/A) code on the L1 frequency (1 575.42 MHz), is designed to provide an accurate positioning capability for civilian users throughout the world. A precise positioning service (PPS), which utilizes the Precise Code (P-code) on a second frequency L2 (1 227.6 MHz), provides a more accurate positioning capability, but is encrypted to restrict its use to authorized agencies.

On 1 May 2000, the United States discontinued the use of GPS selective availability (SA). The discontinuation of SA resulted in an immediate improvement of GPS SPS accuracy.

The Interface Control Document (ICD) available in <http://www.navcen.uscg.gov/pubs/gps/icd200/default.htm> defines the requirements related to the interface between the Space Segment (SS) of the GPS and the Navigation User Segment.

GPS uses the geodetic reference datum approved by ICAO WGS-84 (World Geodetic System 1984).

| | Global average 95% of the time | Worst site 95% of the time |
|---------------------------|--------------------------------------|----------------------------------|
| Horizontal position error | 13 m (43 ft) | 36 m (118 ft) |
| Vertical position error | 22 m (72 ft) | 77 m (253 ft) |

Table 2 – GPS SPS Position Accuracy (Annex 10, vol. 1, item 3.7.3.1.1.1)

2.2.2 Globalnaya Navigatsionnaya Sputnikovaya Sistema (GLONASS)

GLONASS provides three-dimensional position and velocity determinations based upon the measurement of transit time and Doppler shift of radio frequency (RF) signals transmitted by GLONASS satellites. The system is operated by the Ministry of Defence of the Russian Federation. In 1996, the Russian Federation offered the GLONASS channel of standard accuracy (CSA) to support the needs of international civil aviation and the ICAO Council accepted the offer.

The nominal GLONASS space segment consists of 24 operational satellites and several spares. GLONASS satellites orbit at an altitude of 19 100 km (10 310 NM) with an orbital period of 11 hours and 15 minutes. Eight evenly spaced satellites are to be arranged in each of the three orbital planes, inclined 64.8 degrees and spaced 120 degrees apart.

A navigation message transmitted from each satellite consists of satellite coordinates, velocity vector components, corrections to GLONASS system time, and satellite health information. Measurements from a minimum of four satellites are required to establish three-dimensional position and time. A minimum of three satellite measurements is required to determine two-dimensional position and time, if altitude is known. The user's receiver may track these satellites either simultaneously or sequentially. GLONASS satellites broadcast in two L-band portions of the RF spectrum and have two binary codes, namely, the C/A code and the P-code, and the data message. GLONASS is based upon a frequency division multiple access (FDMA) concept. GLONASS satellites transmit carrier signals at different frequencies. A GLONASS receiver separates the total incoming signal from all visible satellites by assigning different frequencies to its tracking channels. The use of FDMA permits each GLONASS satellite to transmit identical P-code and C/A code.

The navigation data message provides information regarding the status of the individual transmitting satellite along with information on the remainder of the satellite constellation. From a user's perspective, the primary elements of information in a GLONASS satellite transmission are the clock correction parameters and the satellite position (ephemeris). GLONASS clock corrections provide data detailing the difference between the individual satellite's time and GLONASS system time, which is referenced to Coordinated Universal Time (UTC).

Ephemeris information includes the three-dimensional Earth-centred Earth-fixed position, velocity and acceleration for every half-hour epoch of each satellite. For a measurement time somewhere between the half-hour epochs, a user interpolates the satellite's coordinates using position, velocity and acceleration from the half-hour marks before and after the measurement time.

The GLONASS control segment performs satellite monitoring and control functions, and determines the navigation data to be modulated on the coded satellite navigation signals. The control segment includes a master control station and monitoring and upload stations. Measurement data from each monitoring station is processed at the master control station and used to compute the navigation data that is uploaded to the satellites via the upload station. Operation of the system requires precise synchronization of satellite clocks with GLONASS system time. To accomplish the necessary synchronization, the master control station provides the clock correction parameters.

The Interface Control Document (ICD) for GLONASS is available at <http://www.glonass-center.ru>.

As a geodetic system, GLONASS uses PZ-90 (Parameters of Earth 1990 coordinate system), and the SARPs for GNSS in Annex 10 include a conversion matrix from PZ-90 to WGS-84.

| | Global average 95% of the time | Worst site 95% of the time |
|---------------------------|-----------------------------------|-------------------------------|
| Horizontal position error | 19 m (62 ft) | 44 m (146 ft) |
| Vertical position error | 29 m (96 ft) | 93 m (308 ft) |

Table 3 – GLONASS CSA Position Accuracy (Annex 10, vol. 1 item 3.7.3.2.1.1)

2.3 GNSS Receivers

A GNSS receiver consists of an antenna and a processor which computes position, time and, possibly, other information depending on the application. Measurements from a minimum of four satellites are required to establish three-dimensional position and time. Accuracy is dependent on the precision of the measurements from the satellites and the relative positions (geometry) of the satellites used.

2.4 Augmentation Systems

Even though the core constellations and the receivers can provide accuracy, continuity, availability and integrity to meet from en-route to non-precision approach (NPA) requirements, for precision approach and procedures that require a greater degree of accuracy or integrity, it is necessary to have some source of augmentation for these parameters.

The augmentation systems that are listed in Annex 10 SARPs are ABAS, GRAS, SBAS and GBAS and will be briefly described below.

Except for ABAS, the philosophy of the other augmentation systems is based on the concept of differential correction, which uses GNSS receivers installed on the ground in a precisely defined position to calculate the error for each pseudo-range distance measured from satellites in view of the core constellations. The calculated error for each satellite is then broadcasted so other receivers can correct the information coming from the satellites.

2.4.1 Aircraft-Based Augmentation System (ABAS)

In the early 1990s, many aircraft operators were quick to adopt GNSS because of the availability of relatively inexpensive Global Positioning System (GPS) receivers. Operators used these early receivers as an aid to visual flight rules (VFR) and instrument flight rules (IFR) navigation. They quickly saw the benefits of having global area navigation (RNAV) capability, and demanded avionics that could be used for IFR navigation.

The core satellite constellations were not developed to satisfy the strict requirements of IFR navigation. For this reason, GNSS avionics used in IFR operations should augment the GNSS signal to ensure, among other things, its integrity. ABAS augments and/or integrates GNSS information with information available on-board the aircraft to enhance the performance of the core satellite constellations.

The most common ABAS technique is called receiver autonomous integrity monitoring (RAIM). RAIM requires redundant satellite range measurements to detect faulty signals and alert the pilot. The requirement for redundant signals means that navigation guidance with integrity provided by RAIM may not be available 100 per cent of the time. RAIM availability depends on the type of operation; it is lower for non-precision approach than for terminal, and lower for terminal than for en-route. It is for this reason that GPS/RAIM approvals usually have operational restrictions. Another ABAS technique involves integration of GNSS with other airborne sensors such as inertial navigation systems.

Many States have taken advantage of GPS/ABAS to improve service without incurring any expenditure on infrastructure. The use of GPS/ABAS is a worthwhile first stage in a phased transition to GNSS guidance for all phases of flight.

Some States have also approved the use of GPS as the only navigation service in oceanic and remote areas. In this case avionics should not only have the ability to detect a faulty satellite (through RAIM), but it should also exclude that satellite and continue to provide guidance. This feature is called fault detection and exclusion (FDE). Under such approval, aircraft carry dual systems and operators perform pre-flight predictions to ensure that there will be enough satellites in view to support the planned flight. This provides operators with a cost-effective alternative to inertial navigation systems in oceanic and remote airspace.

Some aircraft with existing inertial navigation systems have used another ABAS technique which involves the integration of GNSS with the inertial data. The combination of GNSS fault detection (FD), or FDE, along with the short-term accuracy of modern inertial navigation systems, provides enhanced availability of GNSS integrity for all phases of flight.

RAIM algorithms require a minimum of five visible satellites in order to perform fault detection and detect the presence of an unacceptably large position error for a given mode of flight. FDE uses a minimum of six satellites not only to detect a faulty satellite but also to exclude it from the navigation solution so that the navigation function can continue without interruption.

A barometric altimeter may be used as an additional measurement so that the number of ranging sources required for RAIM and FDE can be reduced by one. Baro aiding can also help to increase availability when there are enough visible satellites, but their geometry is not adequate to perform integrity function. Basic GNSS receivers require the use of baro aiding for non-precision approach operations.

2.4.2 Ground-Based Regional Augmentation System (GRAS)

GRAS was a system conceptually developed but was never set to operation considering its complexity and the advances in other augmentation systems.

The concept was based on ground reference stations installed all over a large area in precisely defined positions that transmitted the signal received to a master station capable of processing all information and generating error correction for each pseudo-range information received from the satellites.

The master station, then, would send the corrections to VHF stations located all over the area of interest that broadcasted the corrections according to the satellites in view in the coverage area of each VHF station.

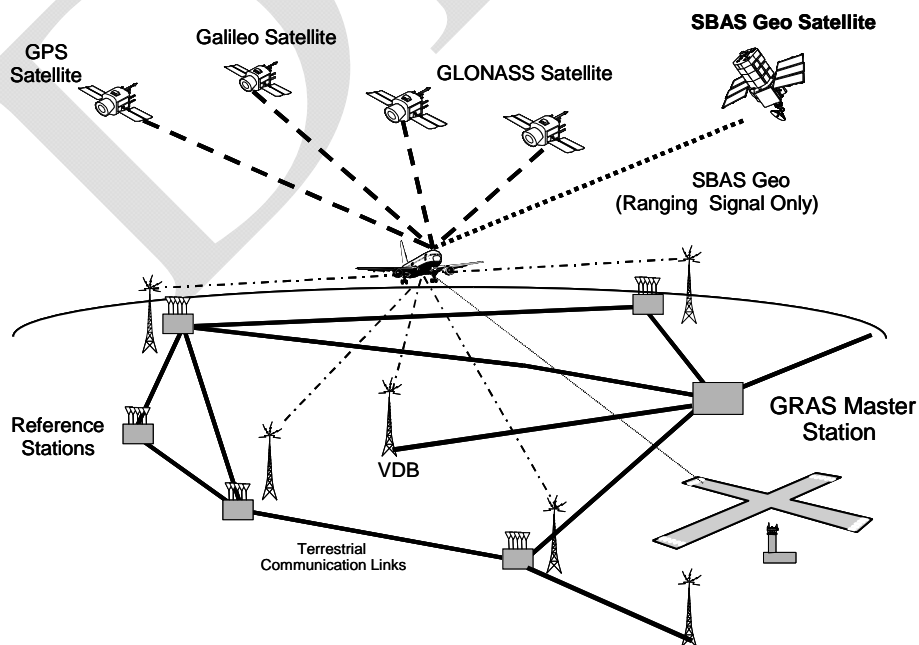


Figure 1 – GRAS architecture

2.4.3 Satellite-Based Augmentation System (SBAS)

An SBAS augments core satellite constellations by providing ranging, integrity and correction information via geostationary satellites. The system comprises:

- a) a network of ground reference stations that monitor satellite signals;
- b) master stations that collect and process reference station data and generate SBAS messages;
- c) uplink stations that send the messages to geostationary satellites; and
- d) transponders on these satellites that broadcast the SBAS messages.

By providing differential corrections, extra ranging signals via geostationary satellites and integrity information for each navigation satellite, SBAS delivers much higher availability of service than the core satellite constellations with ABAS alone. In certain configurations, SBAS can support approach procedures with vertical guidance (APV). An SBAS approach does not require any SBAS infrastructure at an airport.

SBAS can support all en-route and terminal RNAV operations. Significantly, SBAS offers the promise of affordable RNAV capability for a wide cross section of users. This will allow States to reorganize airspace for maximum efficiency and capacity, allowing aircraft to follow the most efficient flight path between airports.

There is one operational SBAS that is the Wide Area Augmentation System (from USA) and several being developed: the European Geostationary Navigation Overlay Service (EGNOS), the Indian GPS and Geostationary Earth Orbit (GEO) Augmented Navigation (GAGAN) System, the Japanese Multi-functional Transport Satellite (MTSAT) Satellite-based Augmentation System (MSAS) and the Russian System for Differential Corrections and Monitoring (SDCM).

Geostationary satellite footprints define the coverage area of an SBAS. Within this coverage area, States may establish service areas where SBAS supports approved operations.

SBAS may suffer impact of ionosphere behavior with decreasing of positioning accuracy or even signal interruption. Ionosphere effects are discussed in section 3.5.6 of this guide.

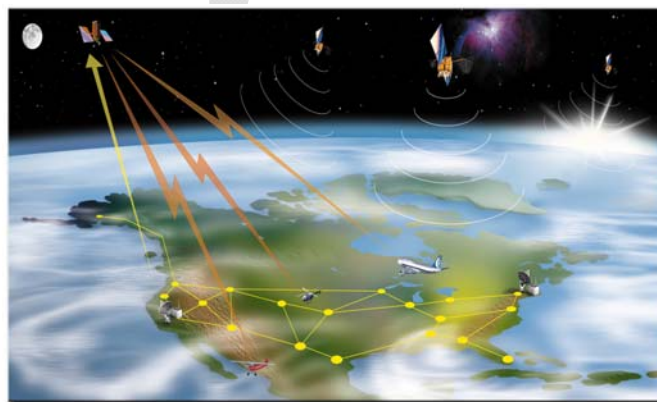


Figure 2 – SBAS architecture
(source <http://www.faa.gov>)

3 Ground Based Augmentation System (GBAS)

3.1 General description

The current core constellation is unable to provide accuracy, availability, continuity and integrity to achieve precision approach. GBAS uses the concept of differential corrections to augment satellites signal in order to meet these requirements.

GBAS provides augmentation to the core constellations to enable precision approach up to Category III.

In Annex 10, volume 1, to date, there are SARPs for GBAS operating over single frequency and single constellation to CAT I operations.

SARPs for CAT II/III are already developed by the ICAO Navigation System Panel (NSP) but not yet included in Annex 10, waiting for developments in the industry.

GBAS works based on three segments: satellites constellation, ground station and aircraft receiver, as shown in Figure 3.

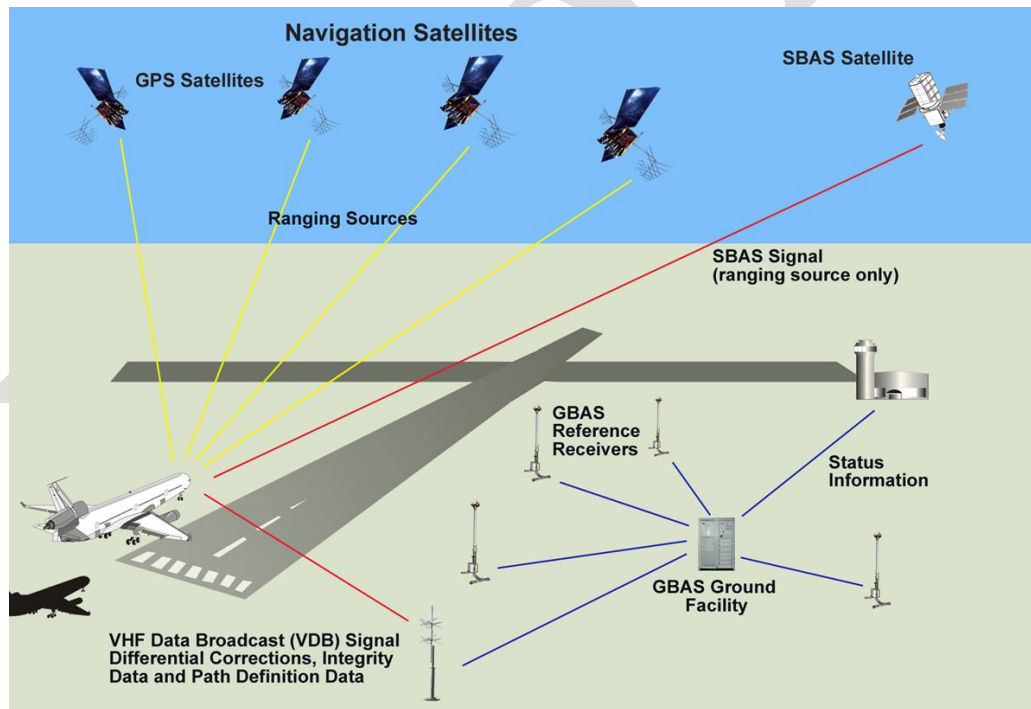


Figure 3 – GBAS architecture
(source <http://www.faa.gov>)

GBAS ground station is formed by reference receivers with their antennas installed in precisely surveyed points. The information generated in the receiver is sent to a processor that computes the corrections for each navigation satellite in view and broadcasts these differential corrections, besides integrity parameters and precision approach pathpoints data, via a Very High Frequency (VHF) Data Broadcast (VDB).

The information broadcast is received by aircraft in VHF coverage that also receive information from the navigation satellites. Then, it uses the differential corrections on the information received directly from the navigation satellites to calculate the precise position.

The precise position is used, along with waypoints data, to supply deviation signals to drive appropriate aircraft systems supporting precision approach operations.

The GBAS approach indication to the pilot is similar to the course and glide path indications of ILS.

3.2 Benefits of GBAS

3.3

Comparing to other precision approach systems, GBAS presents lots of benefits:

- Reduction of critical and sensitive areas;
- Curved approach;
- Positioning service;
- Provision of service in several runways in the same airport;
- Provision of several approach glide angles and displaced threshold;
- Guided missed approach; and
- Adjacent airports use.

3.3.1 Reduction of critical and sensitive areas

Localizer and glide slope have defined radiation patterns which are essential to the composition of navigation signals and thus to the precision of the signal received by the aircraft. Any disturbance in the pattern will cause deviations in the signal.

In order to guarantee that the ILS signal will not be disturbed during instrument approaches critical and sensitive areas were created and are described in Annex 10, Volume 1.

The creation of critical and sensitive areas, however, produces an operational impact with restrictions during aircraft approach.

Considering that GBAS does not use antenna patterns to compose the navigation signal, the site constraints are more related to signal blockage and multipath effects, considerably reducing the operational impact of critical and sensitive areas and increasing airport operational capabilities comparing to other precision approach system.

3.3.2 Curved approach

GBAS permits the use of guided curved approach both with lateral and vertical guidance.

This is an important feature if it is necessary to create procedures to avoid aircraft flying over specific areas close to airports for reasons of noise over urban areas or even to avoid obstacles.

This capability has been proven in test flights in several airports, but there are no SARPs in Annex 10 on an autopilot capable of executing the automatic procedure, which shall be a requirement, considering the complexity of this kind of procedure.

The Federal Aviation Administration (FAA) calls this capability TAP (Terminal Approach Path).

3.3.3 Positioning service

The GBAS positioning service provides horizontal position information to support RNAV operations within the service area.

This feature allows the increase of precision of positioning information and reduction of separation between aircraft in terminal area.

3.3.4 Provision of service in several runways at the same airport

According to GBAS SARPs, the system may be configured to broadcast a maximum of 48 approaches with different configurations, which may serve different runways with different approach parameters (see Table 7).

3.3.5 Provision of several approach glide angles and displaced threshold

The 48 different approaches that a single GBAS may broadcast can be configured to different parameters (see Table 7). In each Final Approach Segment (FAS) data block transmitted, parameters like glide angle and origin of the glide path can be set differently. Broadcasting different glide angles to the same runway allows setting approaches that best fit each kind of aircraft operating at the airport.

If there is a need to displace the threshold, GBAS can be quickly configured to support the new threshold, differently from ILS that should be physically moved to comply with the new position.

3.3.6 Guided missed approach

This is a feature that is not defined in the SARPs but that can be provided by GBAS, increasing the safety of missed approaches.

3.3.7 Adjacent airports use

The structure of FAS data block allows the same GBAS station to serve different airports (see Table 7). It has to be within the coverage of the VDB transmitted signal.

3.4 GBAS basic technical information

3.5

According to Annex 10, vol. 1, GBAS is intended to support all types of approach, landing, departure and surface operations and may support en-route and terminal operations.

The SARPs were developed, to date, to support Category I precision approach, approach with vertical guidance and GBAS positioning service.

The GBAS ground station performs the following functions:

- Provide locally relevant pseudo-range corrections;
- Provide GBAS-related data;
- Provide final approach segment data when supporting precision approach;
- Provide ranging source availability data; and
- Provide integrity monitoring for GNSS ranging sources.

The coverage shall be capable of supporting the level of service required in specified areas, covering, at least, according to Figure 4 – Minimum GBAS coverage (Annex 10, vol. 1, fig. D-4).

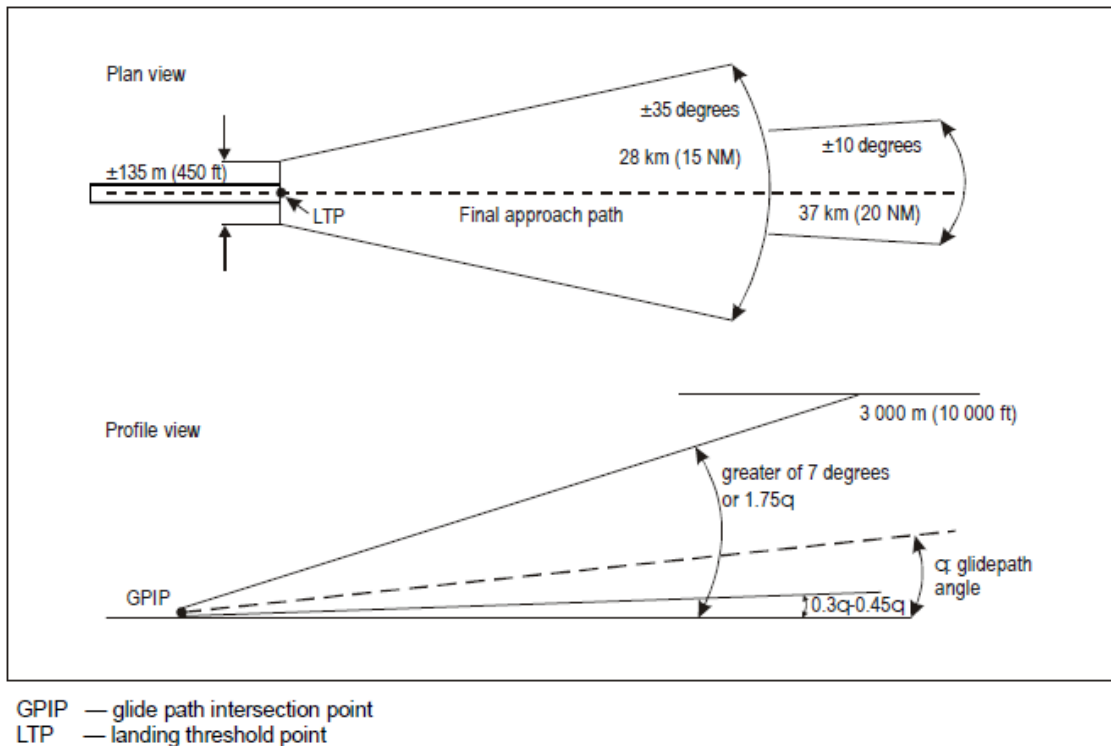


Figure 4 – Minimum GBAS coverage (Annex 10, vol. 1, fig. D-4)

VDB Frequencies - Data broadcast radio frequencies used in GBAS are selected from the radio frequencies in the band of 108 to 117.975 MHz. The lowest assignable frequency is 108.025 MHz and the highest assignable frequency is 117.950 MHz. The separation between assignable frequencies (channel spacing) is 25 kHz.

Access technique - A time division multiple access (TDMA) technique is used with a fixed frame structure. The data broadcast is assigned one to eight slots.

Modulation - GBAS data is transmitted as 3-bit symbols, modulating the data broadcast carrier by D8PSK, at a rate of 10 500 symbols per second.

Polarization - GBAS can provide a VHF data broadcast with either horizontal (GBAS/H) or elliptical (GBAS/E) polarization.

Navigation information - The navigation data transmitted by GBAS includes the following information:

- a) pseudo-range corrections, reference time and integrity data;
- b) GBAS-related data;
- c) final approach segment data when supporting precision approach; and
- d) predicted ranging source availability data.

3.5.1 Data content

The message types that can be transmitted by GBAS are as in Table 4.

| Message type identifier | Message name |
|-------------------------|--|
| 0 | Spare |
| 1 | Pseudo-range corrections |
| 2 | GBAS-related data |
| 3 | Reserved for ground-based ranging source |
| 4 | Final approach segment (FAS) data |
| 5 | Predicted ranging source availability |
| 6 | Reserved |
| 7 | Reserved for national applications |
| 8 | Reserved for test applications |
| 9 to 100 | Spare |
| 101 | GRAS pseudo-range corrections |
| 102 to 255 | Spare |

Table 4 – GBAS VHF data broadcast messages (Annex 10, vol. 1, Table B-63)

3.5.1.1 Type 1 message

The Type 1 message provides differential correction for individual GNSS ranging sources. The message contains three sections:

- a) message information (time of validity, additional message flag, number of measurements and the measurement type);
- b) low-frequency information (ephemeris decorrelation parameter, satellite ephemeris, Cyclic Redundancy Check and satellite availability information); and
- c) satellite data measurement block.

| Data content | Bits used | Range of values | Resolution |
|---------------------------------------|-----------|---------------------------------|------------------------|
| Modified Z-count | 14 | 0 to 1 199.9 s | 0.1 s |
| Additional message flag | 2 | 0 to 3 | 1 |
| Number of measurements (N) | 5 | 0 to 18 | 1 |
| Measurement type | 3 | 0 to 7 | 1 |
| Ephemeris decorrelation parameter (P) | 8 | 0 to 1.275×10^{-3} m/m | 5×10^{-6} m/m |
| Ephemeris CRC | 16 | — | — |
| Source availability duration | 8 | 0 to 2 540 s | 10 s |
| For N measurement blocks | | | |
| Ranging source ID | 8 | 1 to 255 | 1 |
| Issue of data (IOD) | 8 | 0 to 255 | 1 |
| Pseudo-range correction (PRC) | 16 | ± 327.67 m | 0.01 m |
| Range rate correction (RRC) | 16 | ± 32.767 m/s | 0.001 m/s |
| σ_{PR_gnd} | 8 | 0 to 5.08 m | 0.02 m |
| B ₁ | 8 | ± 6.35 m | 0.05 m |
| B ₂ | 8 | ± 6.35 m | 0.05 m |
| B ₃ | 8 | ± 6.35 m | 0.05 m |
| B ₄ | 8 | ± 6.35 m | 0.05 m |

Table 5 – Type 1 pseudo-range corrections message (Annex 10, vol. 1, table B-70)

3.5.1.2 Type 2 message

The Type 2 message identifies the location of the GBAS reference point at which the corrections provided by the GBAS apply and gives other GBAS-related data according to Table 6.

| Data content | Bits used | Range of values | Resolution |
|---------------------------------------|-----------|--------------------------------|--------------------------|
| GBAS reference receivers | 2 | 2 to 4 | — |
| Ground accuracy designator letter | 2 | — | — |
| Spare | 1 | — | — |
| GBAS continuity/integrity designator | 3 | 0 to 7 | 1 |
| Local magnetic variation | 11 | $\pm 180^\circ$ | 0.25° |
| Spare | 5 | — | — |
| $\sigma_{vert_iono_gradient}$ | 8 | 0 to 25.5×10^{-6} m/m | 0.1×10^{-6} m/m |
| Refractivity index | 8 | 16 to 781 | 3 |
| Scale height | 8 | 0 to 25 500 m | 100 m |
| Refractivity uncertainty | 8 | 0 to 255 | 1 |
| Latitude | 32 | $\pm 90.0^\circ$ | 0.0005 arcsec |
| Longitude | 32 | $\pm 180.0^\circ$ | 0.0005 arcsec |
| GBAS reference point height | 24 | $\pm 83\,886.07$ m | 0.01 m |
| Additional data block 1 (if provided) | | | |
| Reference station data selector | 8 | 0 to 48 | 1 |
| Maximum use distance (D_{max}) | 8 | 2 to 510 km | 2 km |
| $K_{md_e_POS, GPS}$ | 8 | 0 to 12.75 | 0.05 |
| $K_{md_e_GPS}$ | 8 | 0 to 12.75 | 0.05 |
| $K_{md_e_POS, GLONASS}$ | 8 | 0 to 12.75 | 0.05 |
| $K_{md_e_GLONASS}$ | 8 | 0 to 12.75 | 0.05 |
| Additional data block 2 (if provided) | | | |
| Additional data block length | 8 | 2 to 255 | 1 |
| Additional data block number | 8 | 2 to 255 | 1 |
| Additional data parameters | Variable | — | — |

Table 6 – Type 2 GBAS-related data message (Annex 10, vol. 1, Table B-71)

3.5.1.3 Type 4 message

The Type 4 message contains one or more sets of Final Approach Segment (FAS) data, each defining a single precision approach. Each Type 4 message data set includes:

- Data set length;
- FAS data block – the set of parameters to identify a single precision approach or APV and define its associate approach path;
- FASVAL approach status; and
- FASLAL approach status.

| Data content | Bits used | Range of values | Resolution |
|---------------------------------|-----------|---------------------------------------|---------------------|
| Operation type | 4 | 0 to 15 | 1 |
| SBAS provider ID | 4 | 0 to 15 | 1 |
| Airport ID | 32 | — | — |
| Runway number | 6 | 0 to 36 | 1 |
| Runway letter | 2 | — | — |
| Approach performance designator | 3 | 0 to 7 | 1 |
| Route indicator | 5 | — | — |
| Reference path data selector | 8 | 0 to 48 | 1 |
| Reference path identifier | 32 | — | — |
| LTP/FTP latitude | 32 | $\pm 90.0^\circ$ | 0.0005 arcsec |
| LTP/FTP longitude | 32 | $\pm 180.0^\circ$ | 0.0005 arcsec |
| LTP/FTP height | 16 | -512.0 to 6 041.5 m | 0.1 m |
| Δ FPAP latitude | 24 | $\pm 1.0^\circ$ | 0.0005 arcsec |
| Δ FPAP longitude | 24 | $\pm 1.0^\circ$ | 0.0005 arcsec |
| Approach TCH (Note 2) | 15 | 0 to 1 638.35 m or 0 to 3 276.7 ft | 0.05 m or 0.1 ft |
| Approach TCH units selector | 1 | — | — |
| GPA | 16 | 0 to 90.0° | 0.01° |
| Course width (Note 1) | 8 | 80 to 143.75 m | 0.25 m |
| Δ Length offset | 8 | 0 to 2 032 m | 8 m |
| Final approach segment CRC | 32 | — | — |

Note 1.— When the runway number is set to 0, then the course width field is ignored and the course width is 38 metres.

Note 2.— Information can be provided in either feet or metres as indicated by the approach TCH unit selector.

Table 7 – Final Approach Segment (FAS) Data block (Annex 10, v. 1, Table B-66)

3.5.2 Channel number

Each GBAS approach transmitted from the ground subsystem is associated with a channel number in the range of 20 001 to 39 999. If provided, the GBAS positioning service is associated with a separate channel number in the range of 20 001 to 39 999. The channel number is given by:

Channel number = $20\,000 + 40(F - 108.0) + 411(S)$

where

F = the data broadcast frequency (MHz)

S = RPDS or RSDS

RPDS = reference path data selector for the FAS data block

RSDS = reference station data selector for the GBAS ground subsystem.

3.5.3 GBAS receiver

The term “GBAS receiver” designates the GNSS avionics that at least meet the requirements for a GBAS receiver as outlined in Annex 10, vol. 1 and the specifications of RTCA/DO-253A, as amended by the relevant United States FAA TSO (or equivalent).

Aircraft must have the capability to receive navigation satellites signal and the VDB information, with respective antennas, and a way to select the approach and an indication of course and glide path.

Like ILS and microwave landing system (MLS), GBAS will provide lateral and vertical guidance relative to the defined final approach course and glide path. The GBAS receiver will employ a channelling scheme that selects the VDB frequency. Approach procedure data are uplinked via the VDB. Each separate procedure requires a different channel assignment.

GBAS avionics standards have been developed to mimic the ILS, in terms of aircraft system integration, in order to minimize the impact of installing GBAS on the existing avionics. For example, display scaling and deviation outputs will be equivalent to the ILS. All avionics will provide final approach course and glide path guidance to all configurations of ground stations.

The GBAS positioning service will provide position, velocity and time data that can be used as an input to an on-board navigator.

In line with ICAO SARPs and the strategy for the introduction and application of non-visual aids to approach and landing, which permit a mix of systems providing precision approach service, industry has developed the multi-mode receiver. This receiver may support precision approach operations based on ILS, MLS and GNSS (GBAS and SBAS).

For GBAS, integrity monitoring is accomplished by the avionics continually comparing Horizontal/Lateral and Vertical Protection Levels (HPL/LPL and VPL), derived from the augmentation signal and satellite pseudorange measurements, against the alert limit for the current phase of flight. When either the vertical or the horizontal limit is exceeded, an alert is given to the pilot. For a precision approach, the aircraft GBAS receiver only uses satellites for which corrections are available.

3.5.4 Siting considerations

The installation of a GBAS ground subsystem involves special considerations in choosing prospective sites for the reference receiver antennas and the VDB antenna(s). In planning antenna siting, Annex 14 obstacle limitation requirements must be met.

The site should be selected in an area free of obstructions, so as to permit the reception of satellite signals at elevation angles as low as possible. In general, anything masking GNSS satellites at elevation angles higher than 5 degrees will degrade system availability.

The antennas for the reference receivers should be designed and sited to limit multipath signals that interfere with the desired signal. Mounting antennas close to a ground plane reduces long-delay multipath resulting from reflections below the antenna. Mounting height should be sufficient to prevent the antenna being covered by snow, or being interfered with by maintenance personnel or ground traffic. The antenna should be sited so that any metal structures, such as air vents, pipes and other antennas are outside the near-field effects of the antenna.

Besides the magnitude of the multipath error at each reference receiver antenna location, the degree of correlation must also be considered. Reference receiver antennas should be located in places that provide independent multipath environments.

The installation of each antenna should include a mounting that will not flex in winds or under ice loads.

Reference receiver antennas should be located in an area where access is controlled. Traffic may contribute to error due to multipath or obstruct view of satellites from the antennas.

The VDB antenna should be located so that an unobstructed line-of-sight exists from the antenna to any point within the coverage volume for each supported FAS. Consideration should also be given to ensuring the minimum transmitter-to-receiver separation so that the maximum field strength is not exceeded. In order to provide the required coverage for multiple FASs at a given airport, and in order to allow flexibility in VDB antenna siting, the actual coverage volume around the transmitter antenna may need to be considerably larger than that required for a single FAS. The ability to provide this coverage is dependent on the VDB antenna location with respect to the runway and the height of the VDB antenna. Generally speaking, increased antenna height may be needed to provide adequate signal strength to users at low altitudes, but may also result in unacceptable multipath nulls within the desired coverage volume. A suitable antenna height trade-off must be made based on analysis, to ensure the signal strength requirements are met within the entire volume. Consideration should also be given to the effect of terrain features and buildings on the multipath environment.

3.5.5 Frequency interference issues

GBAS works with navigation satellites frequencies and VHF frequencies for transmitting VDB information. Both frequency bands are susceptible to suffer interference that can even block the signal.

Causes of interference in 108-118MHz band are well known to affect VOR and Localizers.

In navigation satellites band, the signal is very weak (-160dBm) and thus, susceptible to interference.

Interference was noticed in GBAS within the navigation satellites band at airports in USA and Germany, caused by GNSS repeaters and GNSS blockers (jammers).

3.5.6 Influence of the Ionosphere

The ionosphere affects signals broadcast by GNSS (core satellite constellations and SBAS geostationary satellites) in two ways: it delays the propagation of the modulation (i.e., the code carried by the signal from which pseudorange measurements are made) and, in some regions, it can cause rapid fluctuations in the power and phase of the received signal. The first effect is known as “group delay”, the second as “scintillation”. While the errors in pseudorange measurements caused by group delay are typically of the order of a few tenths of a meter, they can exceed 100 m on rare occasions.

The behavior of the ionosphere, as far as its observable effects on radio signals are concerned, varies with time and location. Since the ionization of the upper atmosphere is caused by radiations from the sun, the density and altitude distribution of the free electrons it contains vary with the 11-year solar cycle, the season of the year, and time of day. They also vary as a function of geomagnetic latitude. Finally, they can be severely perturbed by rare geomagnetic (ionospheric) storms caused by powerful energetic emissions from the sun.

In general ionospheric effects in mid-latitude regions are mild: variations in ionospheric delays are gradual and scintillation virtually inexistent. This may not be true during severe ionospheric (geomagnetic) storms, but such storms are very rare, and their effects can be detected, and sometimes corrected, by augmentation systems. In low-latitude regions, ionospheric effects are more severe: large variations ionospheric delays and patches causing intense amplitude and phase scintillation are frequent, particularly during the local evening hours during years near a peak of the solar cycle. Furthermore, steep ionospheric delay gradients can occur at the edges of deep ionospheric depletions, also known as ionospheric bubbles. In high-latitude regions, ionospheric effects are more severe than in mid-latitude regions, but less severe than in low-latitude regions. This is due to the magnitudes of ionospheric delays, which, while fairly variable, tend to be much smaller than in low-latitude regions. Scintillation can also occur in high-latitude regions, particularly during periods of increased ionospheric activity. It mostly occurs in the form of phase scintillation in these regions.

The different GNSS systems use different approaches to correcting for ionospheric delays.

Single-frequency GBAS avionics systems correct for the combined effects of multiple sources of errors simultaneously, including satellite clock and ephemeris errors, ionospheric delay errors, and tropospheric delay errors, using the differential corrections broadcast by a GBAS ground station. This approach to correcting for ionospheric delays is adequate for Category I precision approach operations.

The VHF Data Broadcast function of GBAS broadcasts messages that contain pseudorange corrections for all satellites in view. When applied, these corrections eliminate, or at least greatly reduce, the majority of common errors (e.g., ionospheric delay) between the ground and the aircraft. In addition, the messages also carry parameters characterizing the uncertainties in these corrections. Equations implemented in the avionics rely on these parameters to calculate protection levels. These protection levels are then compared to the maximum alert limits for that station and the desired flight operation.

A key limitation on the GBAS corrections is the spatial separation between the GBAS ground station and the GBAS aircraft user, since the corrections broadcast to the aircraft can only correct common errors. The main issue here relates to the ionospheric delay, which can vary as a function of distance. This difference tends to be small over small distances typical of the local area under nominal ionospheric conditions in the mid-latitudes. (This is not necessarily the case, however, in the equatorial area where variations can be large even in a local area). Conditions associated with severe mid-latitude ionospheric storms present a different case. In this case, delay magnitudes can vary quite rapidly over short distances and thus may not be adequately mitigated even after the corrections from the GBAS ground station are applied. This presents significant challenges for meeting CAT I requirements and major design issues for CAT II/III, given the more stringent accuracy and integrity requirements that apply to these operations. The main challenge is to adequately demonstrate that the system will be able to meet the integrity and availability requirements during severe ionospheric storms when ionospheric delays can potentially vary rapidly both in time and space.

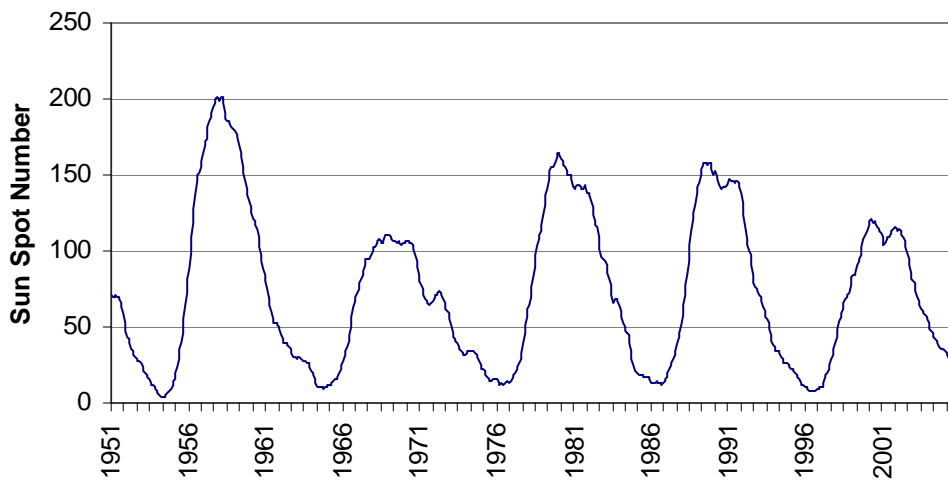


Figure 5 – Solar Activity
(source <http://www.swpc.noaa.gov/>)

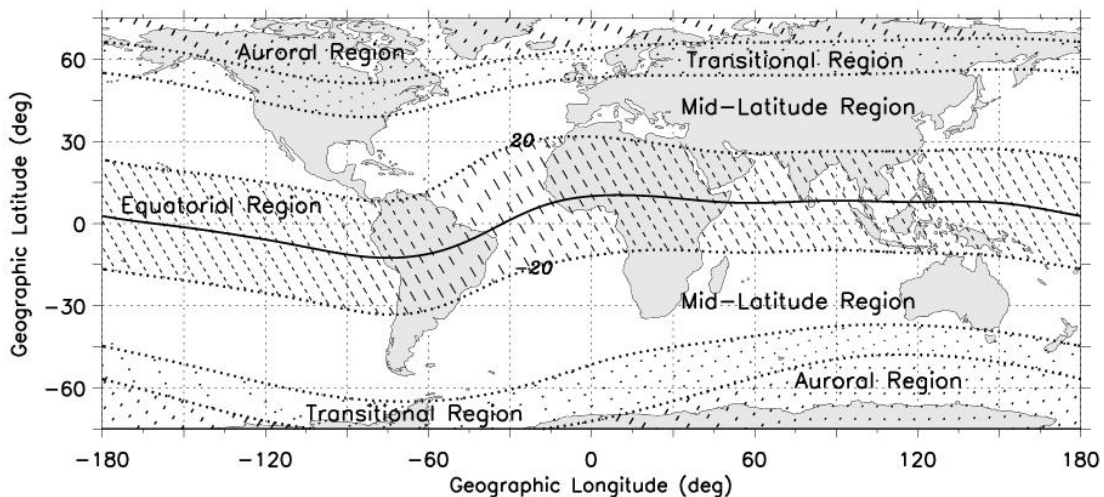


Figure 6 – Ionospheric regions

3.6 Development of GBAS

GBAS was included in Annex 10, Volume 1 by Amendment 76, developed by the Global Navigation Satellite System Panel (GNSSP) from ICAO, that later became the current Navigation Systems Panel (NSP).

Several government agencies, industries and universities work on the development of GBAS ground stations and aircraft receivers and on the operational implementation of the system.



Figure 7 – GBAS stations
(source www.flygls.net)

3.6.1 International GBAS Working Group (IGWG)

Since 2004, the Federal Aviation Administration and Eurocontrol chair the meetings of the International GBAS Working Group with the attendance of Air Navigation Service Providers, Certification Authorities, Airport Authorities, Airlines, aeronautical industries, universities and others.

The purpose of the IGWG is to share information regarding GBAS implementation and development. On February 2011, IGWG was in their 11th meeting.

IGWG information is hosted at <https://extranet.eurocontrol.int>.

3.6.2 GBAS station manufacturers

Several universities and companies are developing GBAS ground stations. Until mid 2011, only Honeywell has a certified station (SLS-4000).

Several other companies are working on GBAS projects: IACIT, SELEX, NPPF Spectra, Indra, Thales, NEC, Park Air, GM Merck and others.

3.6.3 GBAS receiver manufacturers

Avionics companies are developing Multi-mode receivers (MMR), which comprise several receivers in the same box (VOR, ILS, GNSS). This is interesting for space and weight saving in the aircraft. Rockwell-Collins has its GLU-925 (GNSS Landing Unit) that is certified for GBAS CAT I operations. Honeywell is developing an Integrated Navigation Receiver (INR).

Although MMR is a good concept, it is expensive. General aviation lacks a single GBAS receiver.

3.6.4 GBAS in aircraft manufacturers

The big aircraft manufacturers (Boeing and Airbus) have already implemented GBAS landing capability in several of their aircrafts.

Airbus offers GBAS CAT I as an optional item for customers in A380, A350 and A320. For A330 and A340, they are still working on approval for operation.

Boeing offers GBAS CAT I as an optional item in B737-NG and as a regular item in B747-8 and B787.

3.7 Considerations for GBAS implementation

The implementation of GBAS operations requires a series of activities in order to enable the accomplishment of an efficient process.

Implementation Planning

The decision of installing a GBAS has effects in several areas of aeronautical community and must be preceded by a detailed analysis of the scenario.

A study for identification of airports suitable for installation must be conducted followed by a Cost-benefit analysis (CBA) of the implementation.

The CBA must take in consideration several items like:

- ✓ Number of aircraft ready to operate GBAS;
- ✓ Number of aircraft operators committed with the acquisition/modernization of GBAS-capable aircraft;
- ✓ Statistical analysis of meteorological conditions;
- ✓ Evaluation of air traffic growth;
- ✓ NAVAIDs existing to support nonvisual approaches;
- ✓ Planning to change the existing NAVAIDs;
- ✓ Evaluation of the real operational requirements at the airport.

Personnel Training

The transition to GBAS represents a significant change for aviation, so it requires new approaches to regulation, provision of services and operation of aircraft, and personnel training is the key for the success of implementation.

Training must include:

- ✓ Regulators – responsible for updating the regulation to include GBAS operations;
- ✓ Procedure designers – responsible for the design of new GBAS procedures;
- ✓ Air traffic services – responsible for airspace traffic control;
- ✓ Aeronautical information services – responsible for NOTAM and databases;
- ✓ Aerodrome operators – responsible for the operation of the new GBAS infrastructure;
- ✓ Pilots;
- ✓ Airworthiness standards – responsible for approving avionics and installation;
- ✓ NAVAIDs maintenance personnel – responsible for the maintenance of the GBAS station.

GBAS ground station acquisition and installation

This phase comprises several activities that include:

- ✓ Identification of the GBAS manufacturers;
- ✓ Obtainment of information from the manufacturers;
- ✓ Definition of technical and logistics requirements for the acquisition;
- ✓ Obtainment of proposals from the manufacturers;
- ✓ Selection of the best proposal and contract signature;
- ✓ Installation and configuration of the station;
- ✓ Ground and flight tests;
- ✓ Commissioning.

Certification and operational approvals

An important issue during implementation of GBAS is certification and operational approvals that are dependant upon the country regulations.

The common steps in certification are: System Design Approval, Facility Approval and Operational Approval.

System design approval (SDA) refers to the certification of the system as a product. Each state may have a procedure to do all the SDA or validate the SDA done by another country.

Facility approval refers to the certification of the installation, with the compliance with all the requirements of the product installed in a specific location and condition.

Operational approval refers to proper operation, and involves existence of regulations, personnel training and all operational process defined and documented.

Effective Implementation

Following the phases of training personnel, updating regulations, installing ground station and certification, the Aeronautical Authority must render effective the use of the GBAS system.

During the update of regulations, it is important to define the backup infrastructure and alternate procedures in case of system failure.

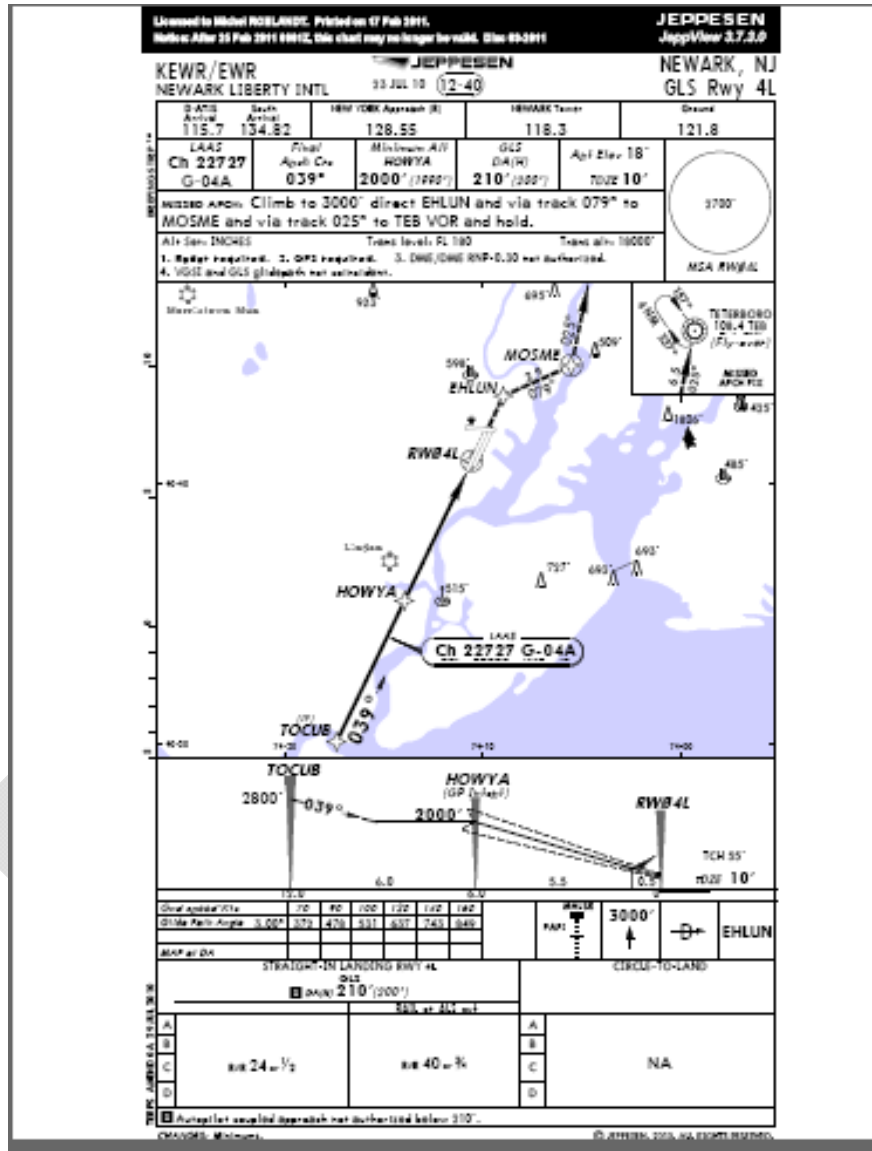


Figure 8 – GLS approach chart
(available at <http://flygls.net/articles/?c=charts>)

4 List of acronyms

The following acronyms are found in the body of this guide:

| | |
|---------|---|
| ABAS | - Aircraft Based Augmentation System |
| APV | - Approach with Vertical Guidance |
| C/A | - Coarse Acquisition |
| CSA | - Channel of Standard Accuracy |
| EGNOS | - European Geostationary Navigation Overlay Service |
| FAA | - Federal Aviation Administration |
| FAS | - Final Approach Segment |
| FDE | - Fault Detection and Exclusion |
| FDMA | - Frequency Division Multiple Access |
| GAGAN | - GPS and Geostationary Earth Orbit Augmented Navigation System |
| GBAS | - Ground Based Augmentation System |
| GEO | - Geostationary Earth Orbit |
| GLONASS | - Global Navigation Satellite System |
| GNSS | - Global Navigation Satellite System |
| GNSSP | - Global Navigation Satellite System Panel |
| GPS | - Global Positioning System |
| GRAS | - Ground Based Regional Augmentation System |
| HPL | - Horizontal Protection Level |
| ICAO | - International Civil Aviation Organization |
| ICD | - Interface Control Document |
| IFR | - Instrument Flight Rules |
| IGWG | - International GBAS Working Group |
| ILS | - Instrument Landing System |
| LAL | - Lateral Alert Limit |
| MLS | - Microwave Landing System |
| MMR | - Multi-Mode Receiver |
| MSAS | - MTSAT Satellite Based Augmentation System |
| MTSAT | - Multi-functional Transport Satellite |
| NAVAID | - Navigation Aid |
| NPA | - Non Precision Approach |
| NSP | - Navigation Systems Panel |
| PPS | - Precision Positioning System |
| RAIM | - Receiver Autonomous Integrity Monitoring |
| RF | - Radio Frequency |
| RNAV | - Area Navigation |
| RPDS | - Reference Path Data Selector |
| RSDS | - Reference Station Data Selector |
| SARPs | - Standards and Recommended Practices |
| SBAS | - Satellite Based Augmentation System |
| SDCM | - System for Differential Corrections and Monitoring |
| SPS | - Standard Positioning System |
| TAP | - Terminal Approach Path |
| TDMA | - Time Division Multiple Access |
| TSO | - Technical Standard Order |

| | |
|------|---------------------------------|
| UTC | - Universal Time Coordinated |
| VAL | - Vertical Alert Limit |
| VDB | - VHF Data Broadcast |
| VFR | - Visual Flight Rules |
| VHF | - Very High Frequency |
| VOR | - VHF Omnidirectional Range |
| VPL | - Vertical Protection Level |
| WAAS | - Wide Area Augmentation System |

Draft

5 List of references in the document

| | |
|---|----|
| Figure 1 – GRAS architecture | 8 |
| Figure 2 – SBAS architecture..... | 9 |
| Figure 3 – GBAS architecture | 10 |
| Figure 4 – Minimum GBAS coverage (Annex 10, vol. 1, fig. D-4)..... | 13 |
| Figure 5 – Solar Activity | 20 |
| Figure 6 – Ionospheric regions..... | 20 |
| Figure 7 – GBAS stations..... | 21 |
| Figure 8 – GLS approach chart | 24 |
| | |
| Table 1 – Signal-in-space performance requirements (Annex 10, vol. 1, table 3.7.2.4-1)..... | 3 |
| Table 2 – GPS SPS Position Accuracy (Annex 10, vol. 1, item 3.7.3.1.1.1) | 5 |
| Table 3 – GLONASS CSA Position Accuracy (Annex 10, vol. 1 item 3.7.3.2.1.1) | 6 |
| Table 4 – GBAS VHF data broadcast messages (Annex 10, vol. 1, Table B-63)..... | 14 |
| Table 5 – Type 1 pseudo-range corrections message (Annex 10, vol. 1, table B-70)..... | 15 |
| Table 6 – Type 2 GBAS-related data message (Annex 10, vol. 1, Table B-71) | 15 |
| Table 7 – Final Approach Segment (FAS) Data block (Annex 10, v. 1, Table B-66) | 16 |

6 List of reference documents

All documents included in this section provide information about GBAS and contribute to the implementation of the concept.

- ICAO Annex 10, vol.1, to the Convention on International Civil Aviation;
- ICAO Annex 14 to the Convention on International Civil Aviation;
- ICAO Doc 9849 – GNSS Manual;
- ICAO NSP Manual on Ionospheric Effects on GNSS Aviation Operations – December/2006;
- FAA Non-Fed Specification FAA-E-AJW44-293 7A - CATEGORY I LOCAL AREA AUGMENTATION SYSTEM GROUND FACILITY;
- Department of Defense. (2000). *Navstar GPS Space Segment/Navigation User Interfaces* (ICDGPS-200C with IRN-200C-004, 12 April 2000). Washington, DC: U.S. Government Printing Office;
- RTCA, Incorporated. (2001). *GNSS based precision approach local area augmentation system (LAAS) signal-in-space interface control document* (RTCA/DO-246C). Washington, DC: RTCA, Incorporated.
- RTCA, Incorporated. (2001). *Minimum Aviation System Performance Standards for the local area augmentation system (LAAS)* (RTCA/DO-245A). Washington, DC: RTCA, Incorporated.
- RTCA, Incorporated. (2001). *Minimum operational performance standards for global positioning system/local area augmentation system airborne equipment* (RTCA/DO-253A). Washington, DC: RTCA, Incorporated.
- RTCA, Incorporated. (2002). *Guidelines for Communication Navigation Surveillance, and Air Traffic Management (CNS/ATM) Systems Software Integrity Assurance* (RTCA/DO-278). Washington, DC: RTCA, Incorporated.
- TSO C162 - Ground Based Augmentation System Very High Frequency Data Broadcast Equipment.
- TSO C161 - Ground Based Augmentation System Positioning and Navigation Equipment.
- ED-88 - MOPS for Multi-Mode Airborne Receiver (MMR) including ILS, MLS and GPS used for Supplemental Means of Navigation, Aug 97.
- ED-95 - MASPS for a Global Navigation Satellite System Ground Based Augmentation System to Support Cat I Operations, October 99.
- ED-114 - MOPS for a Ground Based Augmentation System (GBAS) ground facility to support CAT I approach and landing, Sept. 03.
- ED-144 - System / Ground Based Augmentation System to Support Precision Approach Operations, Oct 2007.

- END -