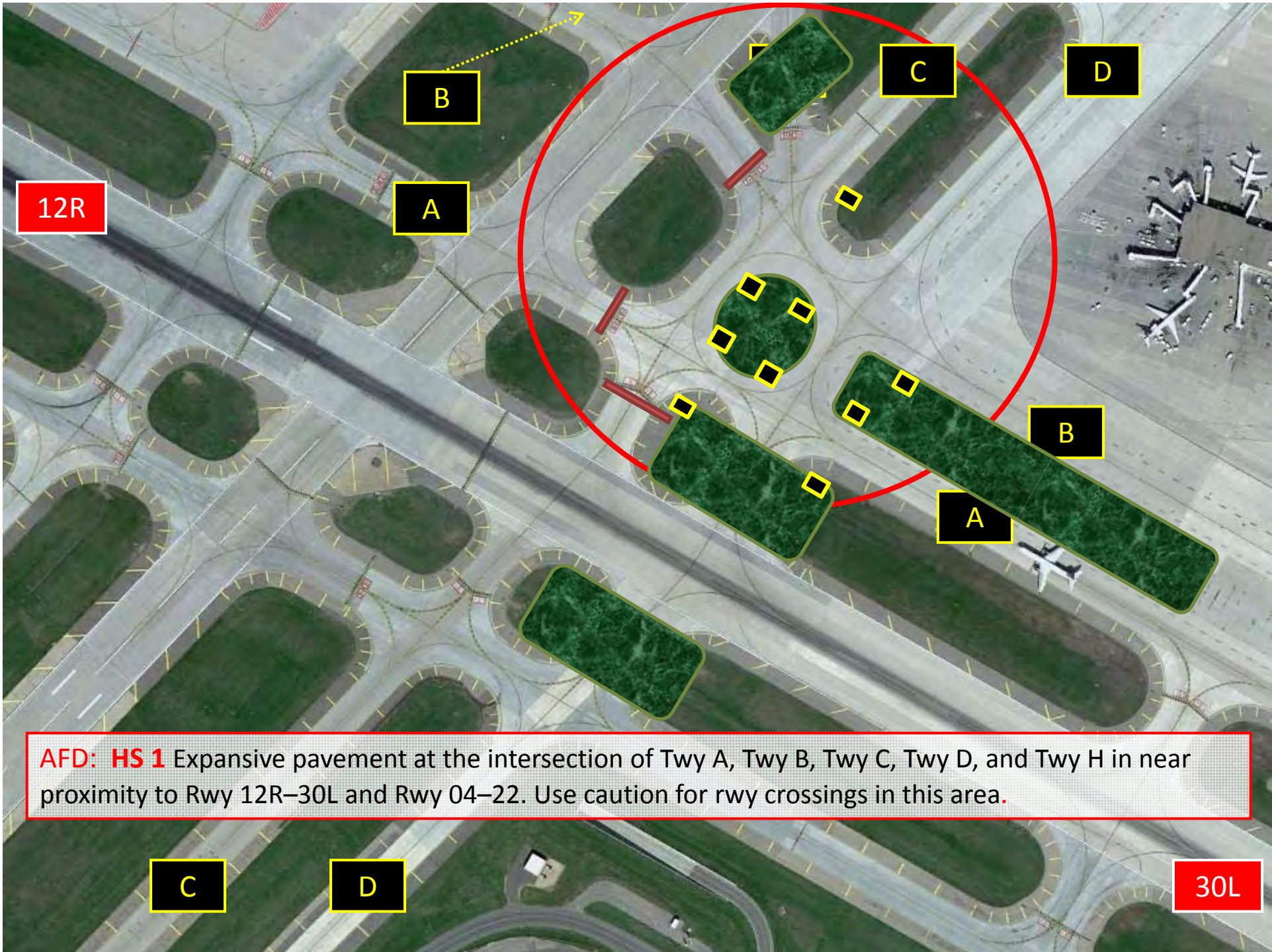
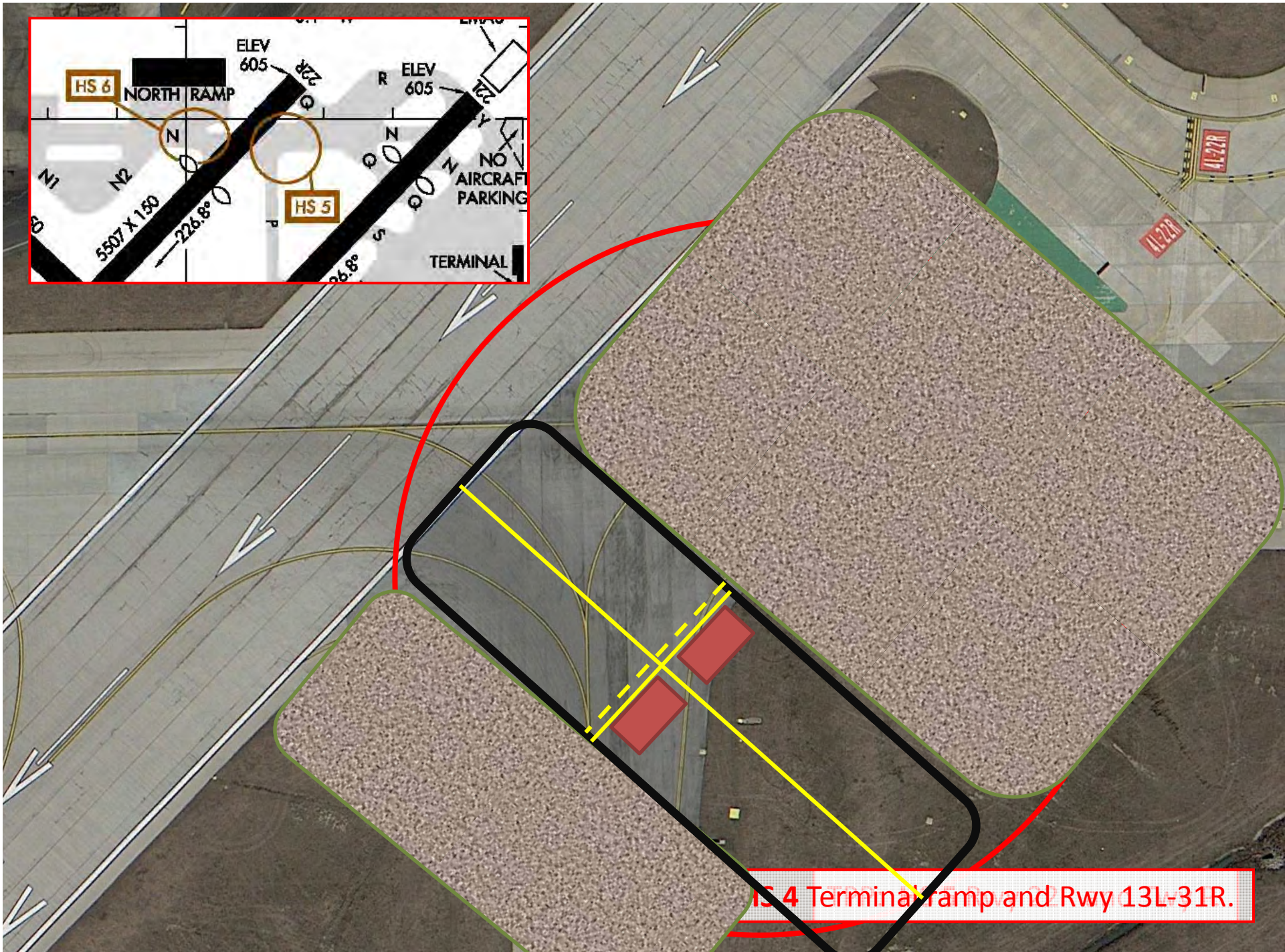


Minneapolis Intl Airport,  
Minnesota  
(MSP)  
HOT SPOT #3



**AFD: HS 1** Expansive pavement at the intersection of Twy A, Twy B, Twy C, Twy D, and Twy H in near proximity to Rwy 12R-30L and Rwy 04-22. Use caution for rwy crossings in this area.

Chicago Midway Airport, Illinois  
(MDW)  
HOT SPOT #4



HS 4 Terminal Ramp and Rwy 13L-31R.

Las Vegas Intl Airport, Nevada  
(LAS)  
HOT SPOT #4

19R

TPP: **HS 4** Rwy 07L and Rwy 01L, co-located rwy holding position markings.

AFD: **HS 4** Rwy holding position markings for Rwy 07L and Rwy 01L are co-located, and located north of Rwy 07L. Verify rwy heading and alignment with proper rwy prior to departure.

Jepp: **HS 4** Runway holding position markings for Rws 7L and 1L are co-located, and located north of Rwy 7L. Verify runway heading and alignment with proper runway prior to departure.

H

7L

1L

E

