

The background of the lower half of the page is a photograph of an airplane cockpit. The view is from the pilot's perspective, looking forward at the instrument panel. The panel is filled with various gauges, dials, and digital displays. Two control yokes are visible on either side of the center console. The cockpit is brightly lit, and the overall color scheme is dominated by blues and whites.

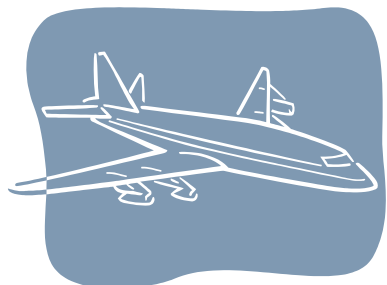
**AVIATION  
EQUIPMENT SURVEY  
2012**



## The following 86 airspace users contributed equipage data...

ADRIA AIRWAYS	BELLE AIR	LACSA
AEGEAN AIRLINES	BLUE PANORAMA AIRLINES	LION AIR
AER LINGUS	BRITISH AIRWAYS	LUFTHANSA
AEROFLOT	CARGOJET AIRWAYS	LUFTHANSA CARGO
AEROGAL	CARGOLUX	MAHAN AIR
AEROLINEAS ARGENTINAS	CARIBBEAN AIRLINES	NETJETS
AEROMEXICO	CATHAY PACIFIC AIRWAYS	OLYMPIC AIR
AEROMEXICO CONNECT	CEBU PACIFIC AIR	PERUVIAN AIRLINES
AEROSVIT UKRAINIAN AIRLINES	CONDOR	PHILIPPINE AIRLINES
AIR AUSTRAL	COPA AIRLINES	QANTAS
AIR BALTIC	CORSAIR	QATAR AIRWAYS
AIR BERLIN	CROATIA AIRLINES	SA AIRLINK
AIR CORSICA	DELTA	SAUDI ARABIAN AIRLINES
AIR EUROPA	DHL	SILKAIR
AIR FRANCE	ETIHAD	SINGAPORE AIRLINES
AIR MALTA	EUROATLANTIC AIRWAYS	SOUTH AFRICAN AIRWAYS
AIR MOLDOVA	EUROPEAN AIR TRANSPORT	SWISS INTERNATIONAL AIR LINES
AIR NEW ZEALAND	EVA AIRWAYS	TACA
AIR TAHITI NUI	FREEBIRD AIRLINES	TACA PERU
AIR TRANSAT	GARUDA INDONESIA	TAM BRAZILIAN AIRLINES
AIR VANUATU	HAHN AIR LINES	TAM LINHAS AEREAS
ALITALIA	HAWAIIAN AIRLINES	TAME
ALL NIPPON AIRWAYS	INSEL AIR INTERNATIONAL	THAI AIRWAYS
ALMASRIA UNIVERSAL AIRLINES	JAPAN AIR COMMUTER	TUIFLY
ASIANA AIRLINES	JAPAN AIRLINES	UNITED
ATLAS AIR	JAPAN TRANSOCEAN AIR	VIET NAM AIRLINES
AUSTRAL LINEAS AEREAS	JETSTAR PACIFIC AIRLINES	VIRGIN AUSTRALIA
AVIANCA AIRLINES	KINGFISHER AIRLINES	VOLARIS
	KOREAN AIRLINES	VRG LINHAS AEREAS - GOL

Questions and comments regarding this report should be addressed to...



**Mr. Kieran O'Carroll**

*Asst. Director, Safety, Operations and Infrastructure*

*North Atlantic and North America*

Office tel: +1 786 536 3493

Office fax: +1 (305) 264-7718

Mobile: +1 (305) 798 4023

eMail: [ocarrollk@iata.org](mailto:ocarrollk@iata.org)

**International Air Transport Association**

703 Waterford Way, Suite 600

Miami, Florida, 33126, USA



## The following aircraft types are represented in this report...

(Designations as provided by airspace users)

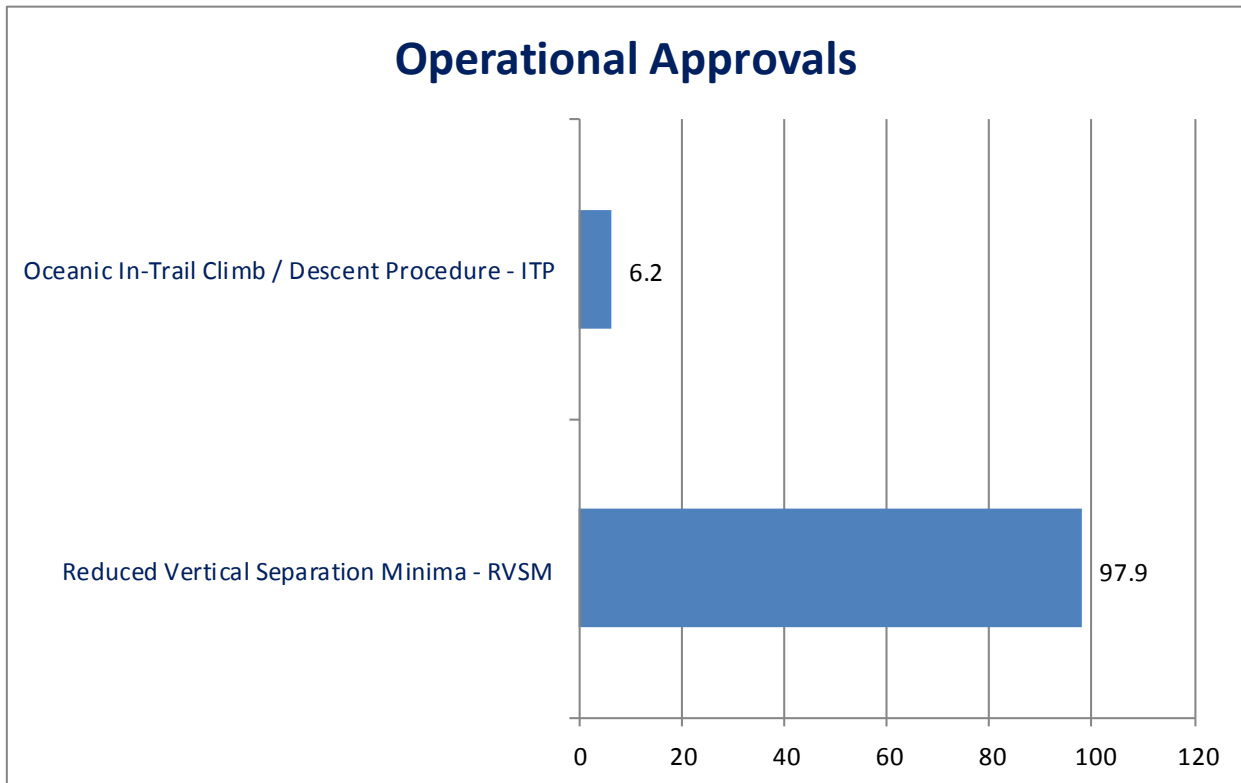
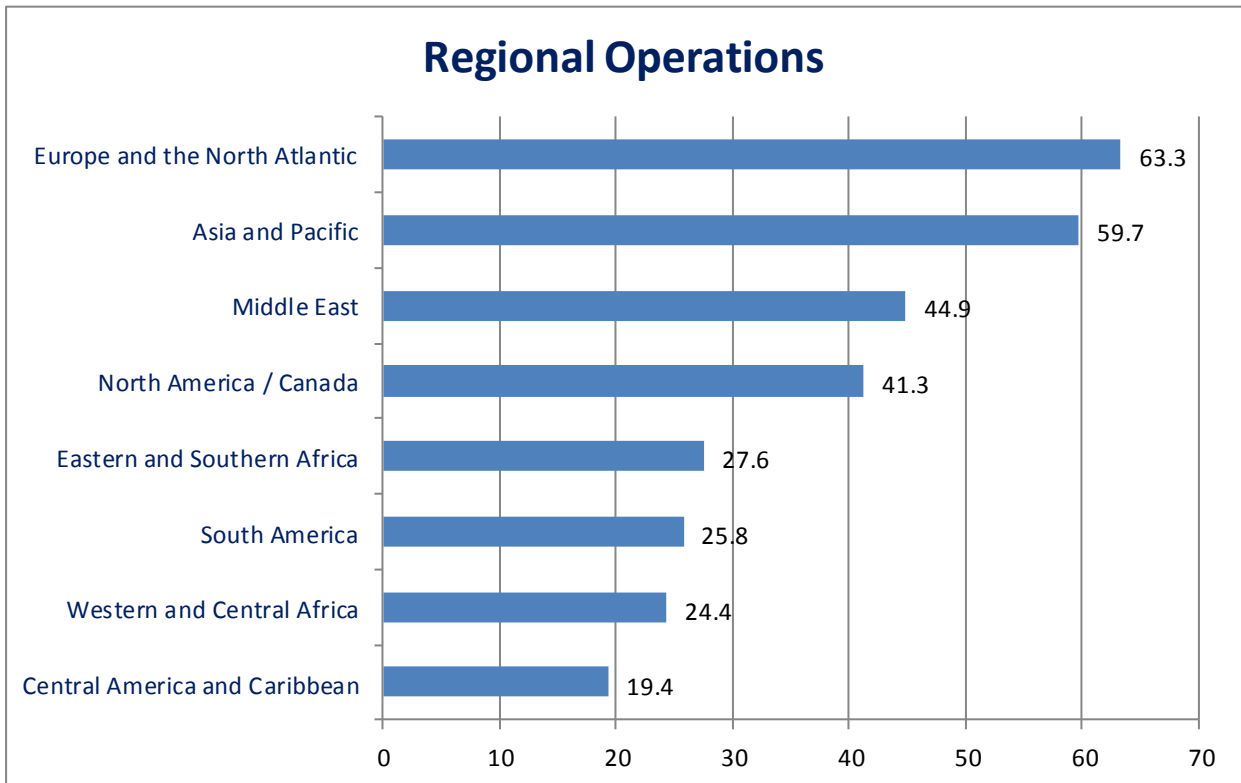
### Survey Sample Size

**4874 aircraft**

**283 fleets**



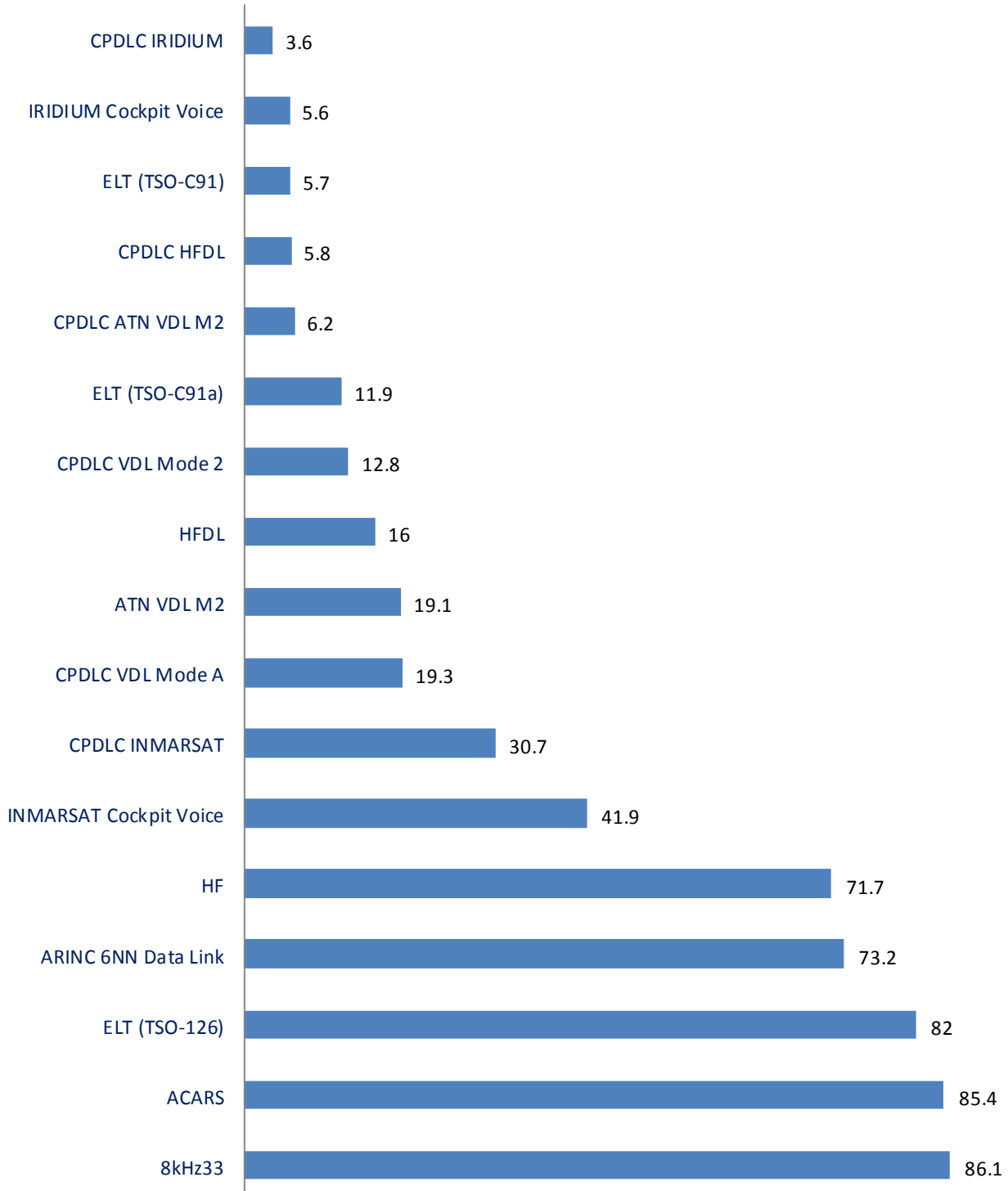
A300	B752
A300B2	B753
A300B2K	B757
A300B4	B762
A300B4-603	B763
A300B4-605R	B764
A306	B767
A310-304	B767-300ER
A318	B772
A319	B773
A319M	B777
A320	B777W
A320M	B77L
A321	B77W
A330	B788
A332	C25C
A333	CL-600-2B19
A342	CL-600-2D24
A343	Dash 8-100
A345	DH8C
A346	DH8D
A388	E120
ATR72	E135
ATR75	E145
B712	E170
B722	E190
B732	F50
B733	G5
B734	GLEX
B735	IL96
B737	MD11
B738	MD11F
B739	MD80
B73W	MD82
B744	P180
B748	Q400
B74D	RJ1H
	SF34





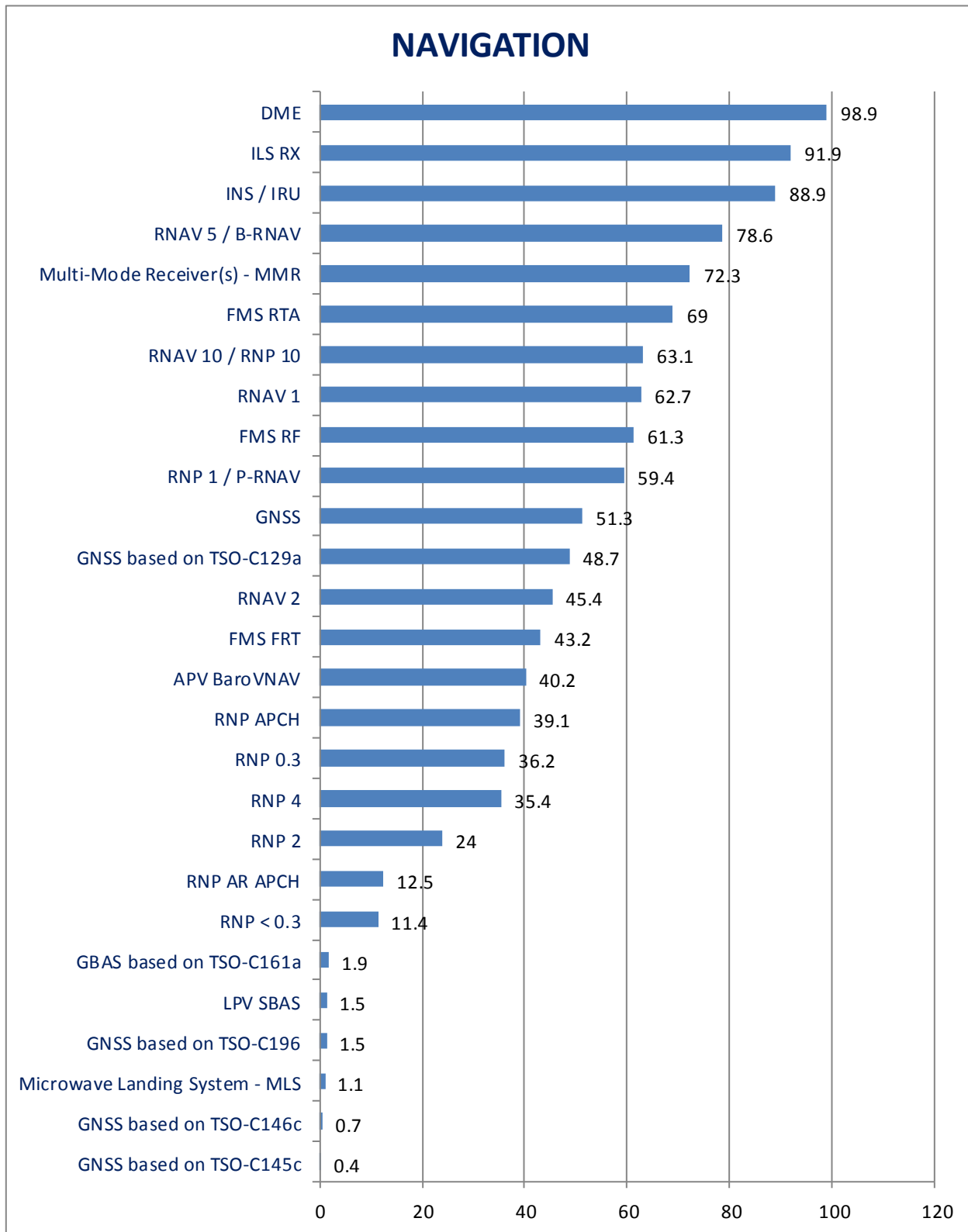
# Global CNS Summary (%)

## COMMUNICATIONS



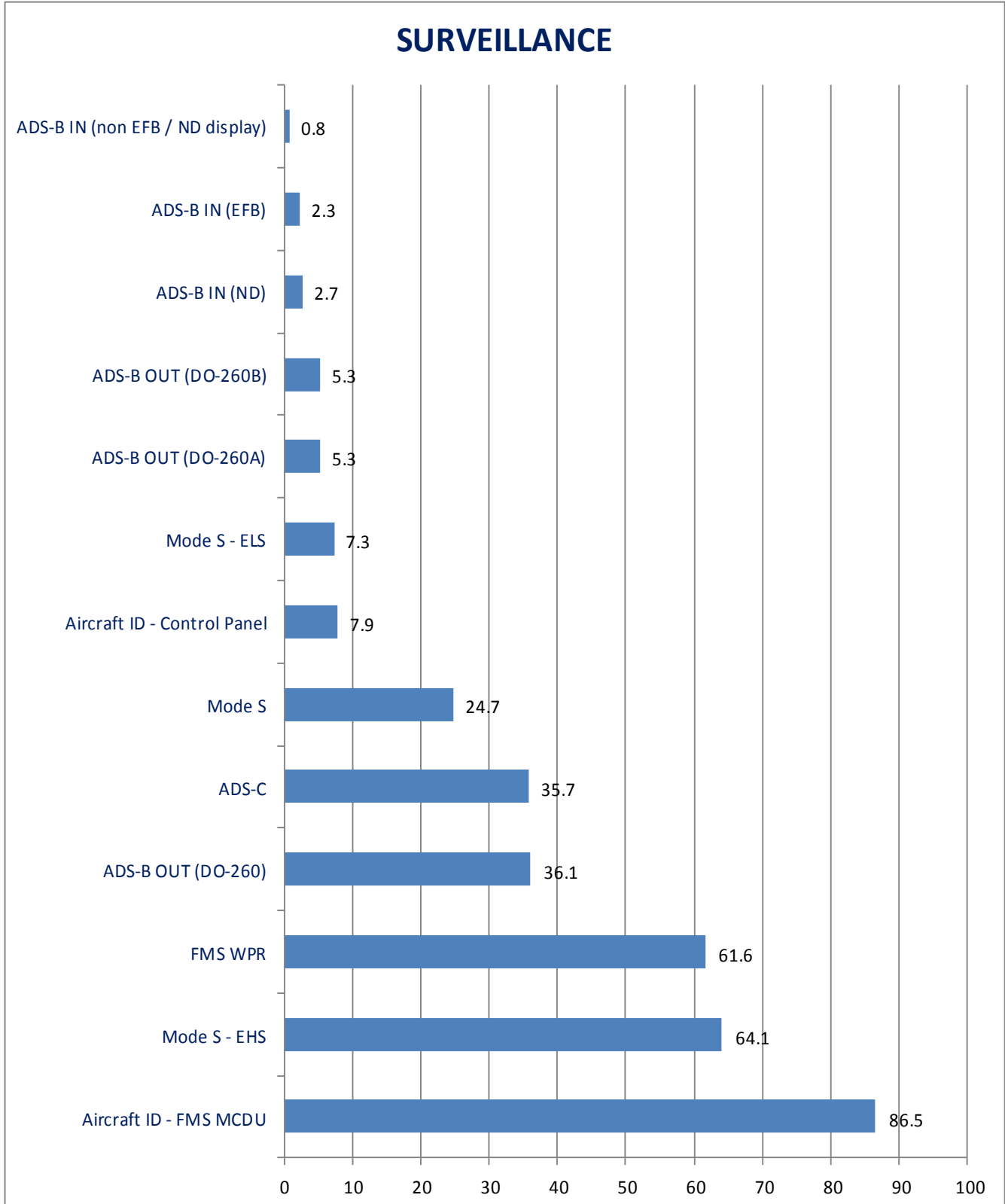


# Global CNS Summary (%)



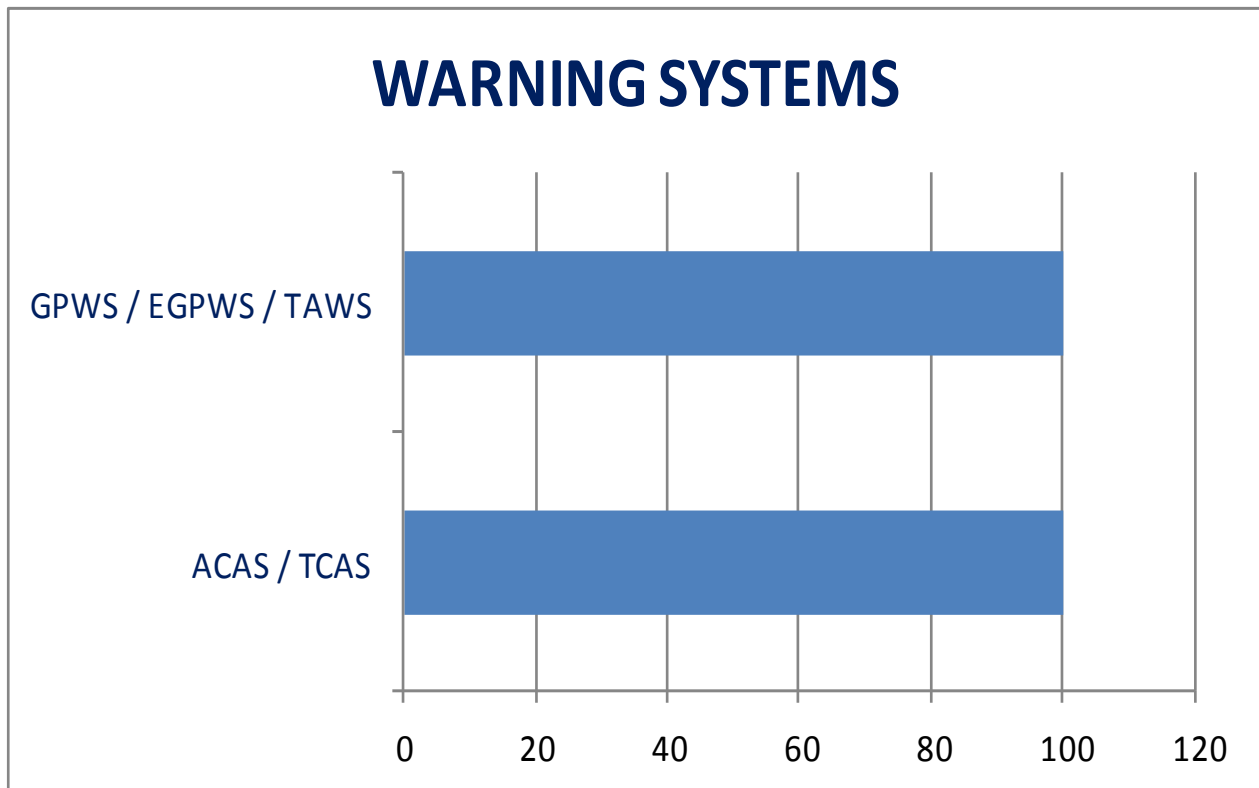
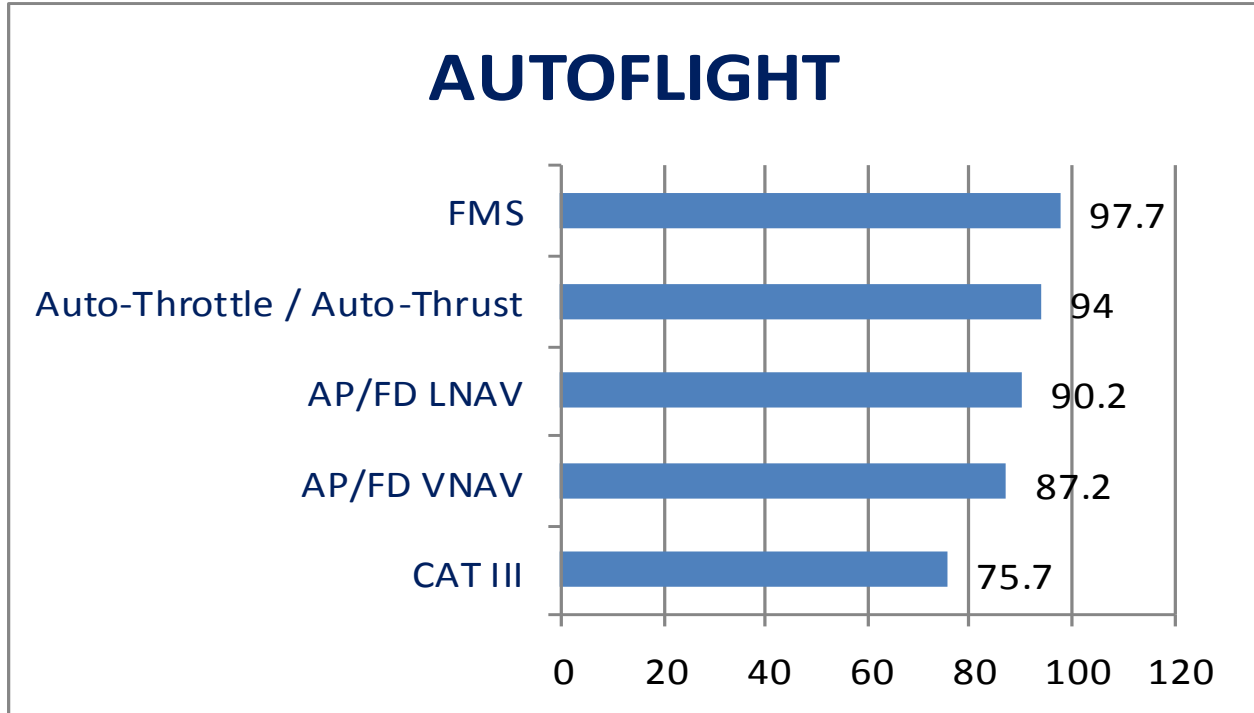


# Global CNS Summary (%)





## Other Systems (%)







## Other Systems (%)

