

Aviation Safety Network database

Contents

- Main Accidents & hijackings database (18,000)
 - Aircraft model data (420)
 - Airport data (15,000)
 - Country / region data (230)
 - Operator data (5,400)
 - Safety recommendations (3,400)
- Wikibase (162,000)

Standards used

- ICAO Doc 8643 - Aircraft Type Designators
- ICAO Doc 8585 - Designators for Aircraft Operating Agencies
- ICAO ADREP taxonomies (a.o. flight phase, damage)
- IATA Airport & Airline codes
- ISO 3166 (country codes)

Data Entry

20140815-0

15 AUG 2014

19:36

A

A2

Preliminary - off

Update

UE

☐ Checked

British Aerospace 3102 Jetstream 31

JTST31

J531

State of Reg

G

Modified

2014-09-02

G-GAVA

785

Links Air

Isf

Created

2014-08-16 8:55:17

Crew

0

2

Ground cas

Collision cas

Damage

SUW

Fate

Aircraft info

Built

1987

F/I

Engines

Garrett TPE331-10UGR-516H

TT

Cycles

Image

☒

Crew info

CPT

F/O

3rd crew

total hrs

8740

on type

3263

age

54

Doncaster/Sheffield-Robin Hood Airport

United Kingdom

Lat

Long

From

Belfast City Airport (BHD/EGAC) [G]

To

Doncaster/Sheffield-Robin Hood Airport (DCA/EGCN) [G]

A Jetstream 31, registration G-GAVA, sustained substantial damage in a landing accident at Doncaster/Sheffield-Robin Hood Airport (DCA), U.K.

Flight 207 took off from Belfast City Airport (BHD) at 17:45 hrs operating a scheduled air service to Doncaster with one passenger and a crew of two pilots on board. The captain was the Pilot Flying (PF) and the co-pilot was the Pilot Monitoring (PM).

The departure, cruise and approach to Doncaster Sheffield Airport were uneventful. Although runway 02 was the active runway, the crew requested radar vectors for a visual final approach to runway 20, a request which was approved by ATC. The loadsheet recorded that the aircraft's mass at landing was expected to be 5,059 kg which required a target threshold indicated airspeed (IAS) of 141 kt.

weckage elevatic

recovery

sea

17

☐

Embed_code

```
<blockquote class="twitter-tweet" lang="en"><p>Latest photos from Doncaster Robin Hood Airport following the Aircraft crash earlier. <a href="http://t.co/j8UEbQCSiB">pic.twitter.com/j8UEbQCSiB</a></p></blockquote>
<a href="https://twitter.com/Alexjroeuck/statuses/500444529611513857">August 16, 2014</a></blockquote>
<script async src="//platform.twitter.com/widgets.js" charset="utf-8"></script>
```

Subform_Sources_URL

Source_title	Source_URL	Source
Telegraph	http://www.telegraph.co.uk/news/aviation/110384	<input checked="" type="checkbox"/>
March 8, 2012 accident at Ronaldway	http://aviation-safety.net/database/record.php?id=	<input type="checkbox"/>
AAIB Bulletin S5/2014	http://www.aaib.eov.uk/cms_resources.cfm?file=/s	<input type="checkbox"/>

Records: 1 1 1 1 1 van 3

Safety Actions

Cause

Occurrence

Airplane - Undercarriage - Gear

Circumst

Result

Result - Runway mishap

Subform_SafetyRecommendations

IssuedTo	Recommendation	Agency	Title
EASA	It is recommended that the European Aviation Safety Agency take action to mandate an effective inspec	AAIB	Safety Recommendation
EASA	It is recommended that the European Aviation Safety Agency take action to assure the continued airwor	AAIB	Safety Recommendation

Records: 1 1 1 1 1 van 2

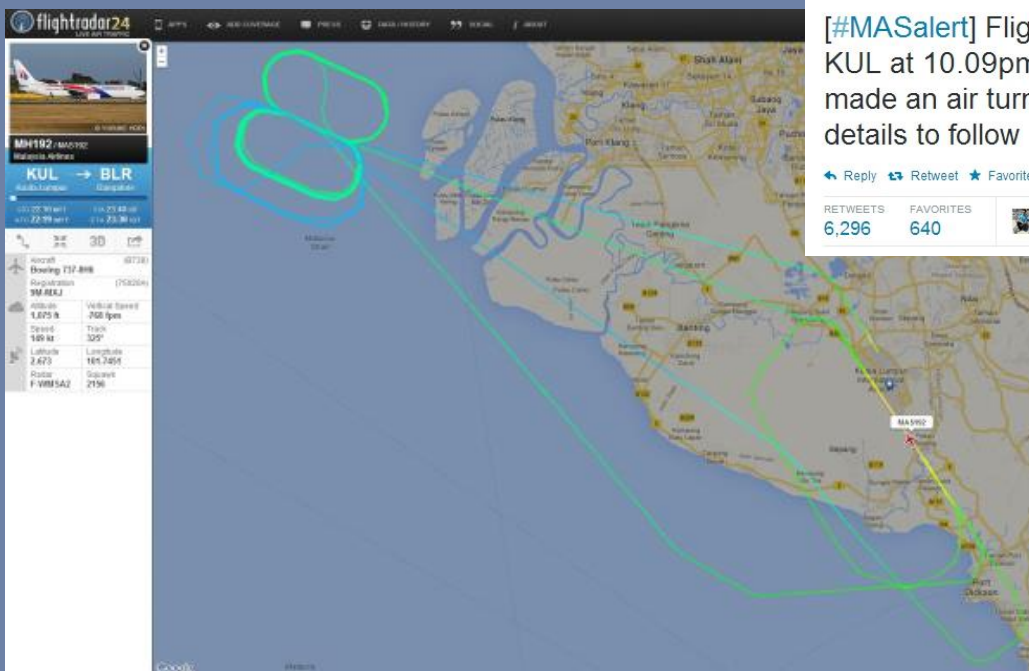
Subform_METAR

METAR_time_Z	METAR_time_local	METAR	Decoded_metar
18:20	19:20	EGCN 151820Z 26005KT 220V280 9999 FEW030 17/14 Q1019	Winds:: 260 degrees at 5 knots, varying between 220 an
18:50	19:50	EGCN 151850Z 22004KT 9999 FEW027 16/14 Q1019	

Records: 1 1 1 1 1 van 2

Challenge 7 - timeliness

Media and public demand immediate incident information



Research



KTLA
@KTLA

Follow

#BREAKING: Aeroméxico plane makes safe emergency landing at LAX, loses 2 tires

3:48 PM - 4 Oct 2014

41 RETWEETS 41 FAVORITES



Krista Seiden
@kristaseiden

Follow

Omg a plane just crashed at SFO on landing as I'm boarding my plane

8:29 PM - 6 Jul 2013

1,415 RETWEETS 148 FAVORITES



Research - NOTAMs

The image shows a screenshot of a NOTAM (Notice to Airmen) list for KSFO. The list contains four entries, each with a title and a description. A red rectangular box highlights the second and third entries. The first entry is for RWY 28R ALS U/S. The second entry is for NAV ILS RWY 28R GP U/S. The third entry is for NAV ILS RWY 28L GP U/S. The fourth entry is for RWY 28R RVRT U/S.

NOTAM Title	NOTAM Description
KSFO - 06/003	RWY 28R ALS U/S. 01 JUN 14:00 2013 UNTIL 22 AUG 23:59 2013. CREATED: 01 JUN 13:39 2013
KSFO - 06/004	NAV ILS RWY 28R GP U/S. 01 JUN 14:00 2013 UNTIL 22 AUG 23:59 2013. CREATED: 01 JUN 13:40 2013
KSFO - 06/005	NAV ILS RWY 28L GP U/S. 01 JUN 14:00 2013 UNTIL 22 AUG 23:59 2013. CREATED: 01 JUN 13:40 2013
KSFO - 06/006	RWY 28R RVRT U/S. 01 JUN 14:00 2013 UNTIL 22 AUG 23:59 2013. CREATED: 01 JUN 13:42 2013

Research - METARs

***[0956 PDT] KSFO 061656Z VRB06KT 10SM FEW013 SCT018 17/10 A2982
RMK AO2 SLP096 T01670100=***

***[1056 PDT] KSFO 061756Z 21006KT 10SM FEW016 18/10 A2982 RMK AO2
SLP097 T01780100 10183 20128 51005=***

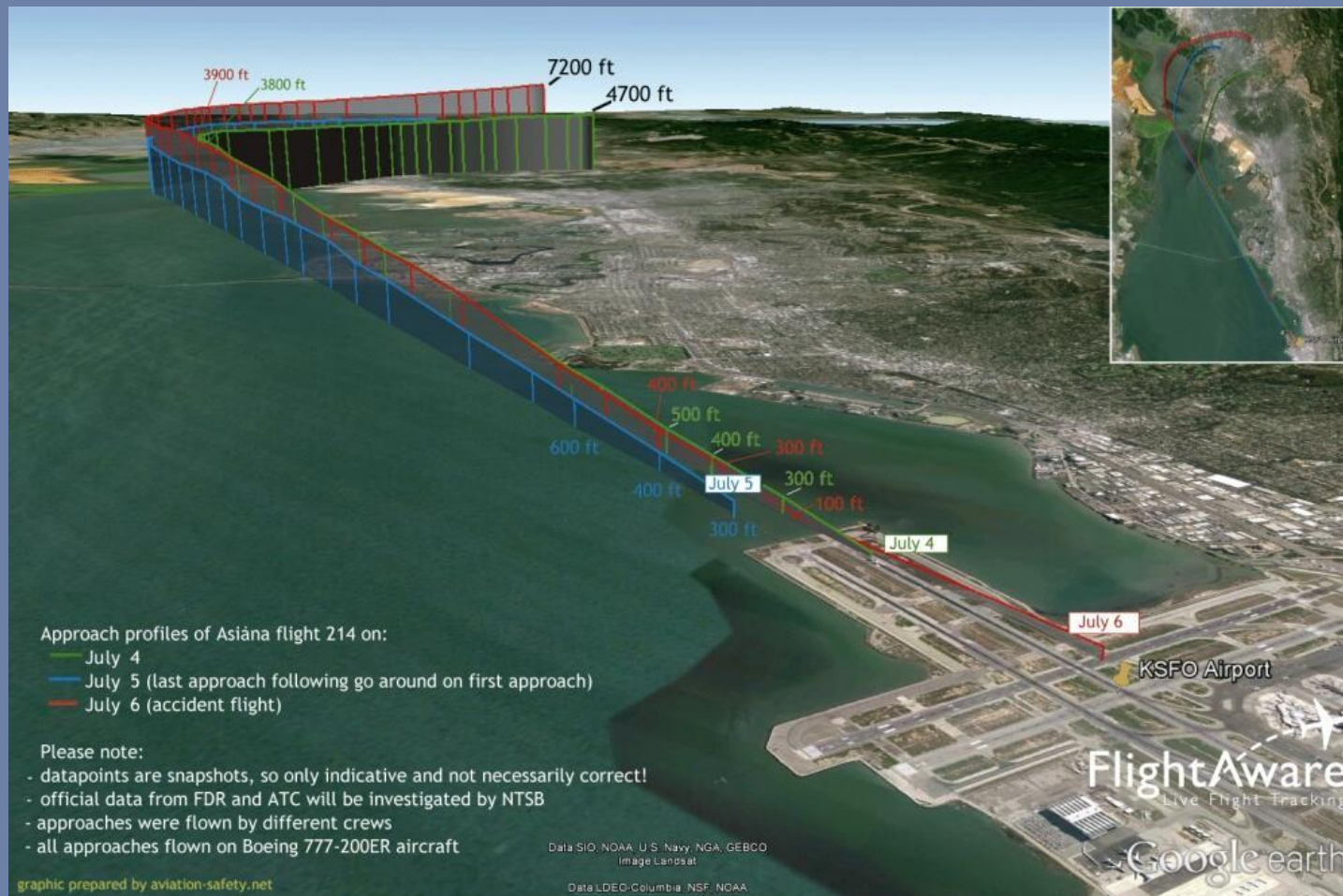
ACCIDENT TIME 1128 PDT

***[1156 PDT] KSFO 061856Z 21007KT 170V240 10SM FEW016 18/10 A2982
RMK AO2 SLP098 T01830100=***

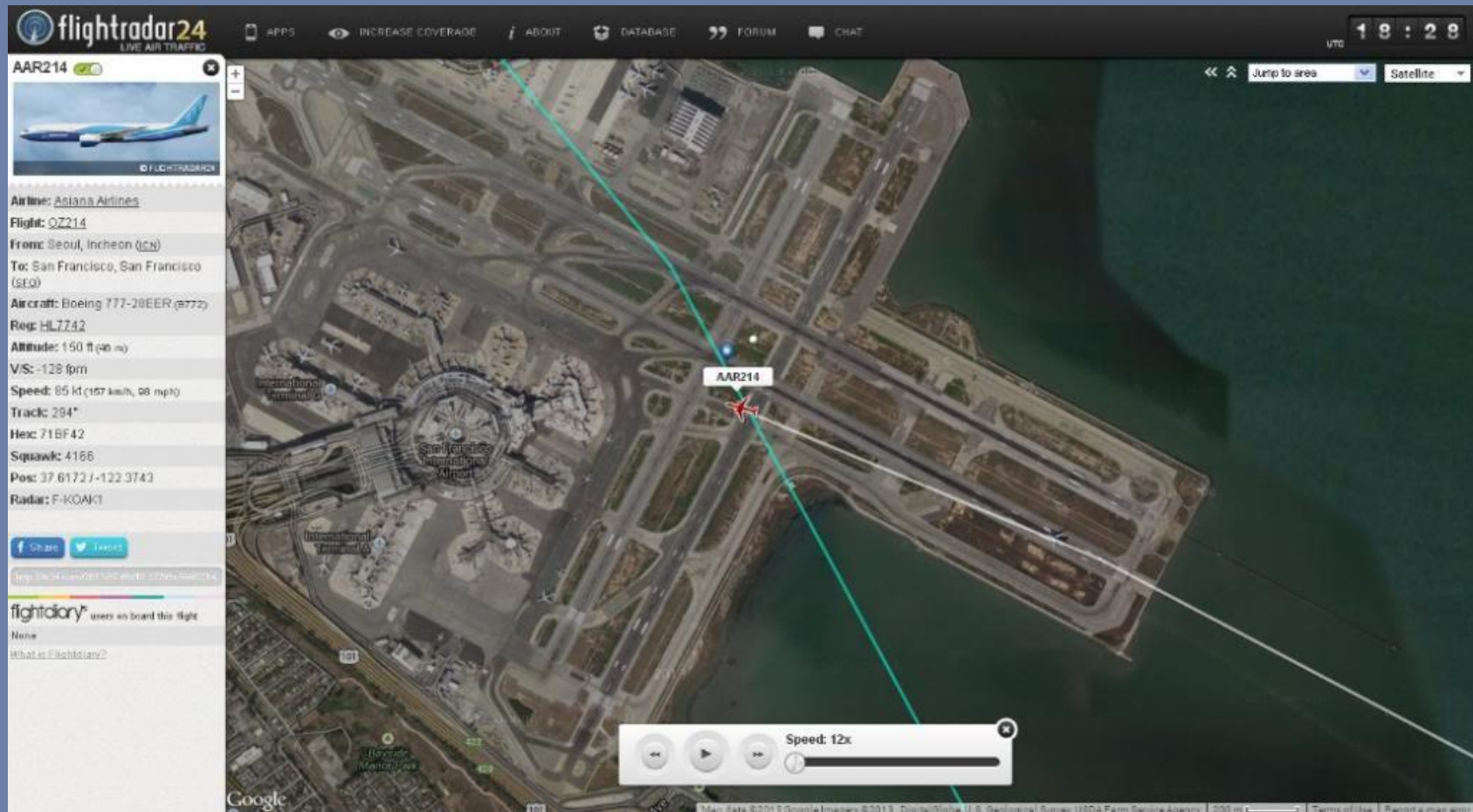
Research - Flight route



Research - Flight route 2

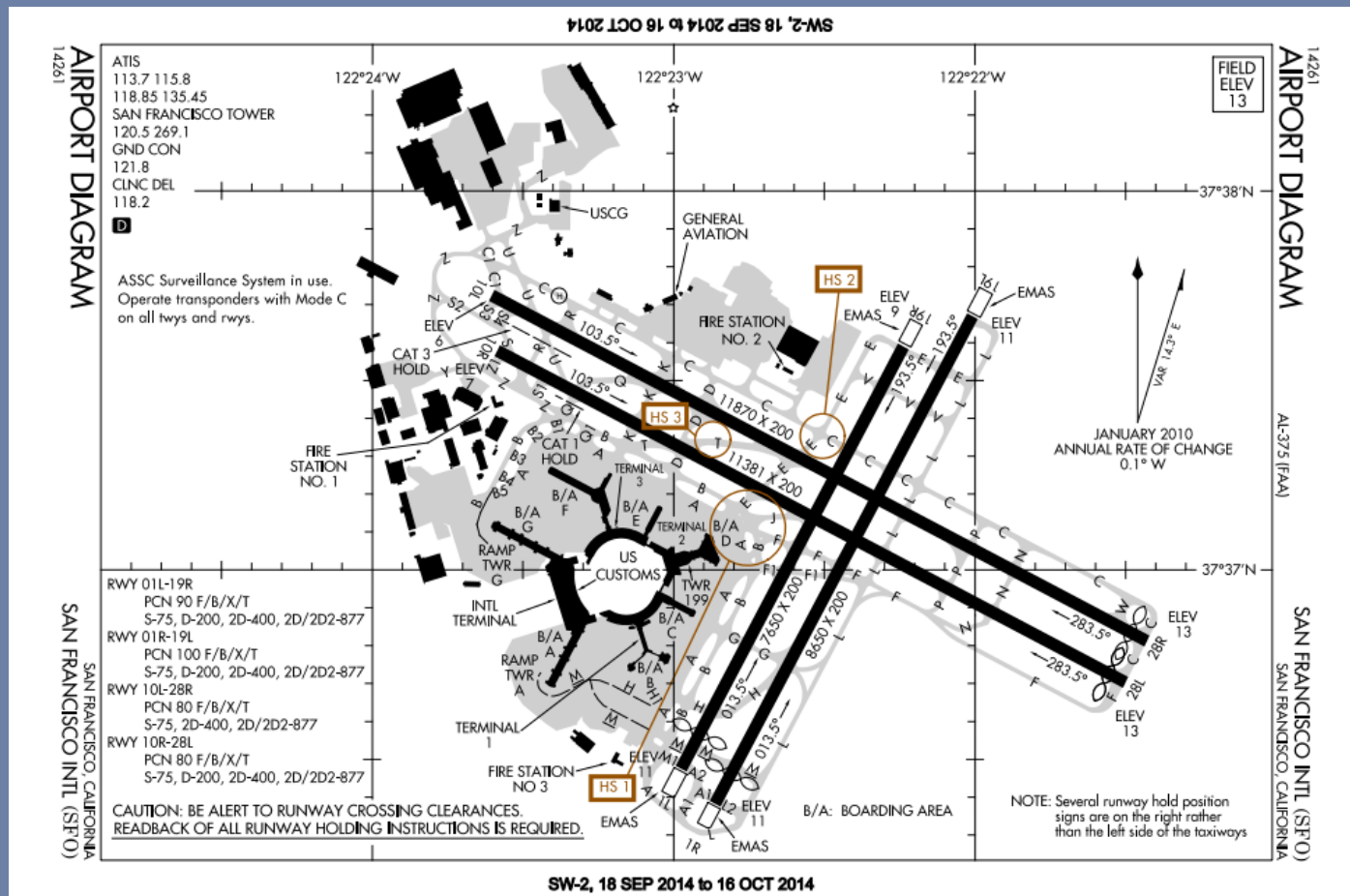


Research - Flight route 3

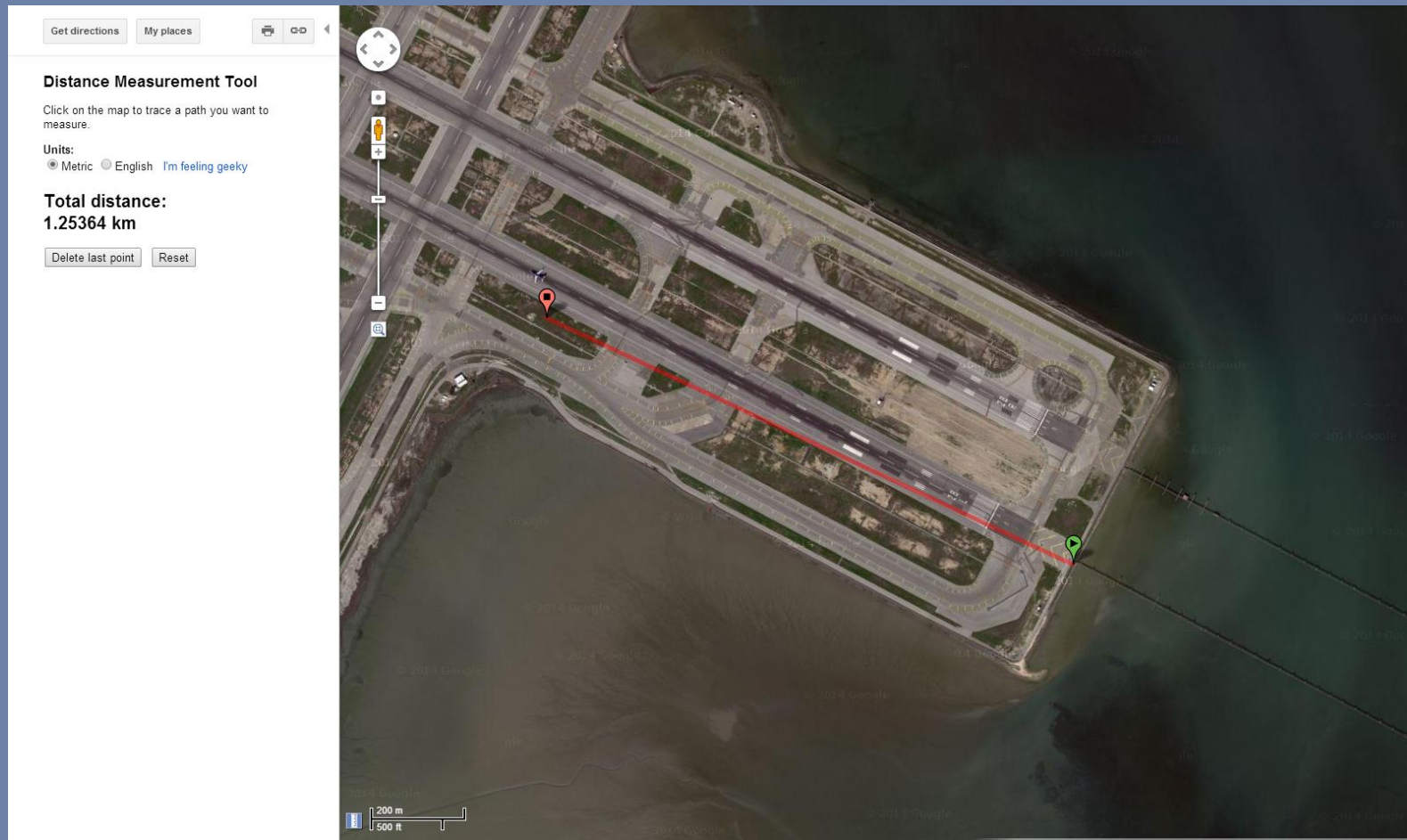


Aviation safety information

Research - AIP




Research - Charts (Google Earth)



Research - Photos



Research - Official statements

**NTSB** ✓
@NTSB

NTSB is gathering information about a plane crash on the runway of San Francisco International Airport. More information will come soon.

9:23 PM - 6 Jul 2013

154 RETWEETS 19 FAVORITES

**flySFO**
@flySFO

An accident has occurred at SFO. Asiana flight 214 inbound from Seoul has crashed. Rescue efforts underway.

9:48 PM - 6 Jul 2013

389 RETWEETS 46 FAVORITES

**Boeing Airplanes** ✓
@BoeingAirplanes

We are aware of the incident at SFO and continue to gather information.

9:49 PM - 6 Jul 2013

251 RETWEETS 33 FAVORITES

**Asiana Airlines**
@AsianaAirlines

We've posted our press release on most of our social media platforms. Here's the official release on our website: us.flyasiana.com/Global/US/en/h...

3:35 AM - 7 Jul 2013

179 RETWEETS 24 FAVORITES

**NTSB** ✓
@NTSB

NTSB investigators conduct first site assessment of #Asiana214 in S.F.

9:30 AM - 7 Jul 2013

236 RETWEETS 42 FAVORITES

Research - Similar cases

Accident description

Status: Preliminary - official
 Date: Friday 15 August 2014
 Time: 19:36



Type: [British Aerospace 3102 Jetstream 31](#)
 Operator: [Links Air](#)
 Registration: [G-GAVA](#)
 C/n / msn: 785
 First flight: 1987
 Engines: 2 [Garrett TPE331-10UGR-516H](#)
 Crew: Fatalities: 0 / Occupants: 2
 Passengers: Fatalities: 0 / Occupants: 1
 Total: Fatalities: 0 / Occupants: 3
 Airplane damage: Substantial
 Location: Doncaster/Sheffield-Robin Hood Airport (DCA) ([United Kingdom](#))
 Phase: Landing (LDG)
 Nature: Domestic Scheduled Passenger
 Departure airport: [Belfast City Airport \(BHD/EGAC\)](#), United Kingdom
 Destination airport: [Doncaster/Sheffield-Robin Hood Airport \(DCA/EGCN\)](#), United Kingdom
 Flightnumber: 207

Narrative:
 A Jetstream 31, registration G-GAVA, sustained substantial damage in a landing accident at Doncaster/Sheffield-Robin Hood Airport (DCA), U.K.

Flight 207 took off from Belfast City Airport (BHD/EGAC) on 15 August 2014, en route to Doncaster with one passenger and a crew of two pilots (PM). The co-pilot was the Pilot Monitoring (PM).

The departure, cruise and approach were unremarkable. The aircraft was on the active runway 02 when the accident occurred.



© Colin Franklin

aviation-safety.net

Accident description

Status: Final
 Date: Thursday 8 March 2012
 Time: 17:57



Type: [British Aerospace 3102 Jetstream 31](#)
 Operating for: [Manx2](#)
 Leased from: Links Air
 Registration: [G-DMW](#)
 C/n / msn: 785
 First flight: 1987
 Engines: 2 [Garrett TPE331-10UGR-516H](#)
 Crew: Fatalities: 0 / Occupants: 2
 Passengers: Fatalities: 0 / Occupants: 12
 Total: Fatalities: 0 / Occupants: 14
 Airplane damage: Substantial
 Airplane fate: Repaired
 Location: Isle Of Man-Ronaldsway Airport (IOM) ([United Kingdom](#))
 Phase: Landing (LDG)
 Nature: Domestic Scheduled Passenger
 Departure airport: [Leeds/Bradford Airport \(LBA/EGNM\)](#), United Kingdom
 Destination airport: [Isle Of Man-Ronaldsway Airport \(IOM/EGNS\)](#), United Kingdom
 Flightnumber: 309

Narrative:
 A BAe Jetstream 31 turboprop plane sustained damage when the starboard undercarriage failed on landing at Ronaldsway Airport, Isle of Man. There were 12 passengers and two crew members on board. Flight NM309 had departed Leeds/Bradford Airport (LBA/EGNM) on 8 March 2012, en route to Isle of Man-Ronaldsway Airport (IOM/EGNS) for a routine and the crew were flying at 14 kt. The commander was on his line training on type.



Research - Interim & Final reports



Thank you

More information:

<http://aviation-safety.net>

Or follow us on:



@AviationSafety



@harro



facebook.com/AviationSafetyNetwork

Visualisation missing airliners

