



# ICAO Global ATFM

A day in the life.....

**Andy Brooker-Tormey**

Group Head Network Management Centre



A large, semi-transparent globe graphic is centered in the background, showing the outlines of continents and latitude/longitude lines. It is set against a red-to-purple gradient background with a large, stylized number '9' shape behind it.

# Introduction to AA

# At a glance

 **6 base countries**

 **23 hubs**

 **200+ aircraft**

 **9 aoc**

|  |                                  |
|--|----------------------------------|
|   | 6 : KUL, JHB, BKI, KCH, PEN, LGK |
|   | 6 : DMK, HKT, CNX, KBV, UTP, HDY |
|   | 4 : CGK, SUB, KNO, DPS           |
|   | 3 : MNL, CEB, KLO                |
|   | 3 : BLR, DEL, CCU                |
|  | 1 : NGO                          |

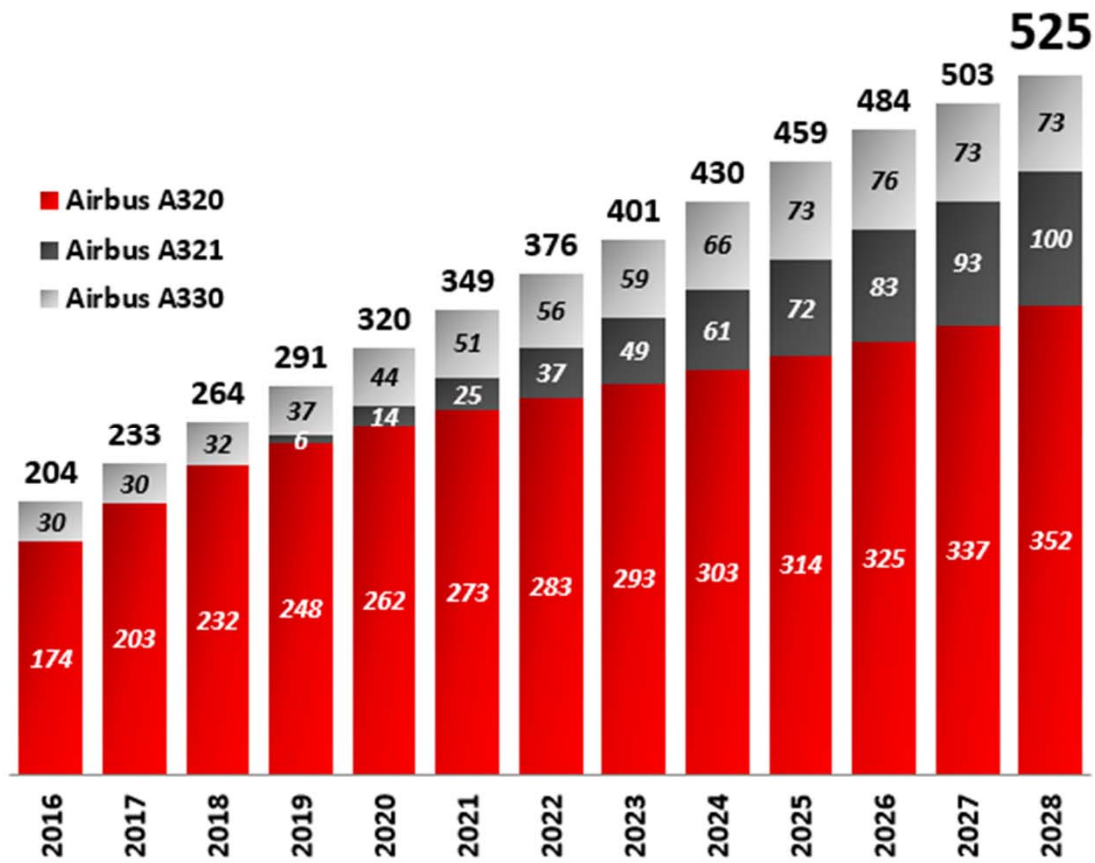






Coming

# (more) Growth





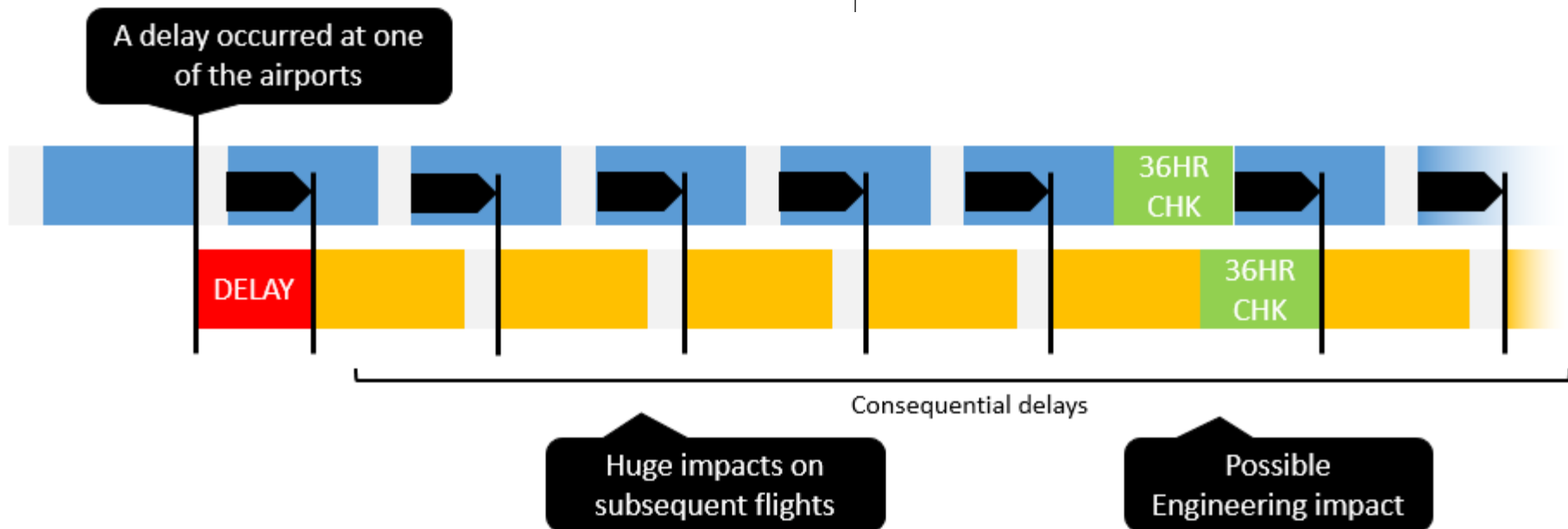
Today

# Business model

- Tight cost management
- High utilisation
- Speedy turnaround
- High loadfactor

# Boundaries

- Aircraft availability
- Crew legal duty period
- Airport operating hours
- Consumer expectations





# Challenges

- **Timeline to knowledge of delay / disruption**
  - At departure time / holding / enroute deviation
  - Lack of visibility of constraints
  - Lack of clarity on TOBT / TSAT style info
- **No common interface / single user portal**
  - Webpage
  - Email
  - Phonecall
  - Worst of all none of the above
- **Impacts across stakeholder groups**
  - Guests
  - Crew
  - Support teams (Handling / Fuelling etc)
  - Destination / Departure airport
  - Further rotations through the day

Our own

Learn once:

- Common awareness
- Common response

# Goals

- Predictability
  - Tactical
  - Pre Tactical
- Efficiency
- Visibility
- Agility

*...implementation of a seamless, global ATM system that will enable aircraft operators to meet their planned times of departure and arrival and adhere to their preferred flight profiles with minimum constraints and without compromising agreed levels of safety*

# Help (!) us to

- Visualise the constraints
  - Understand Capacity
  - Understand how & why it changes
- Understand the investment
  - Equipage
  - Timelines
  - Benefits
- Mini wins
  - Multi Nodal
- SWIM – with the users
  - Common portal
  - Operational system interface / API

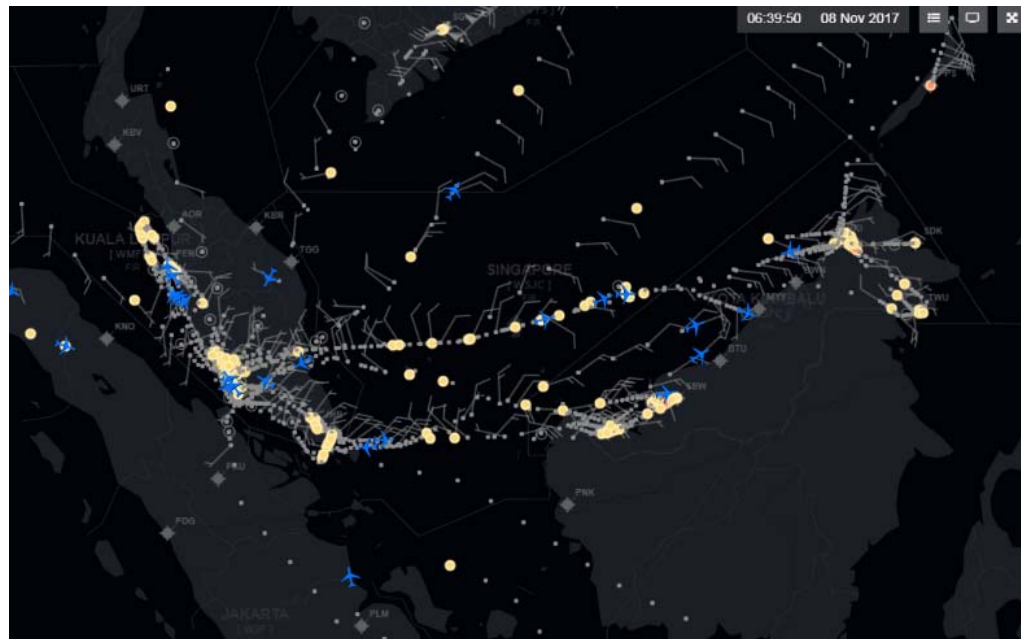




Future

# On our side

- TAMDAR – MET & EDR ( image courtesy of Panasonic)



- MSN specific performance
- Actively engage and be open to the conversation



THANK YOU