

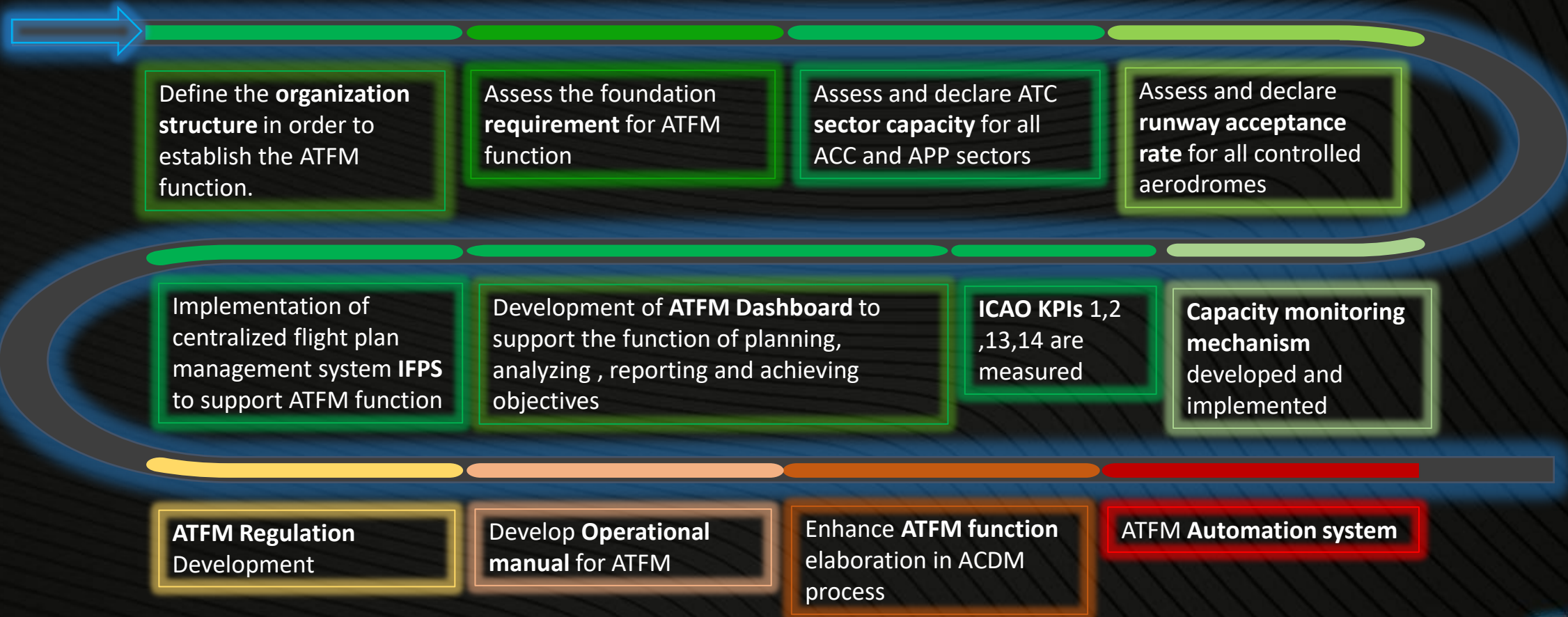


JEDDAH ATFM DASHBOARD

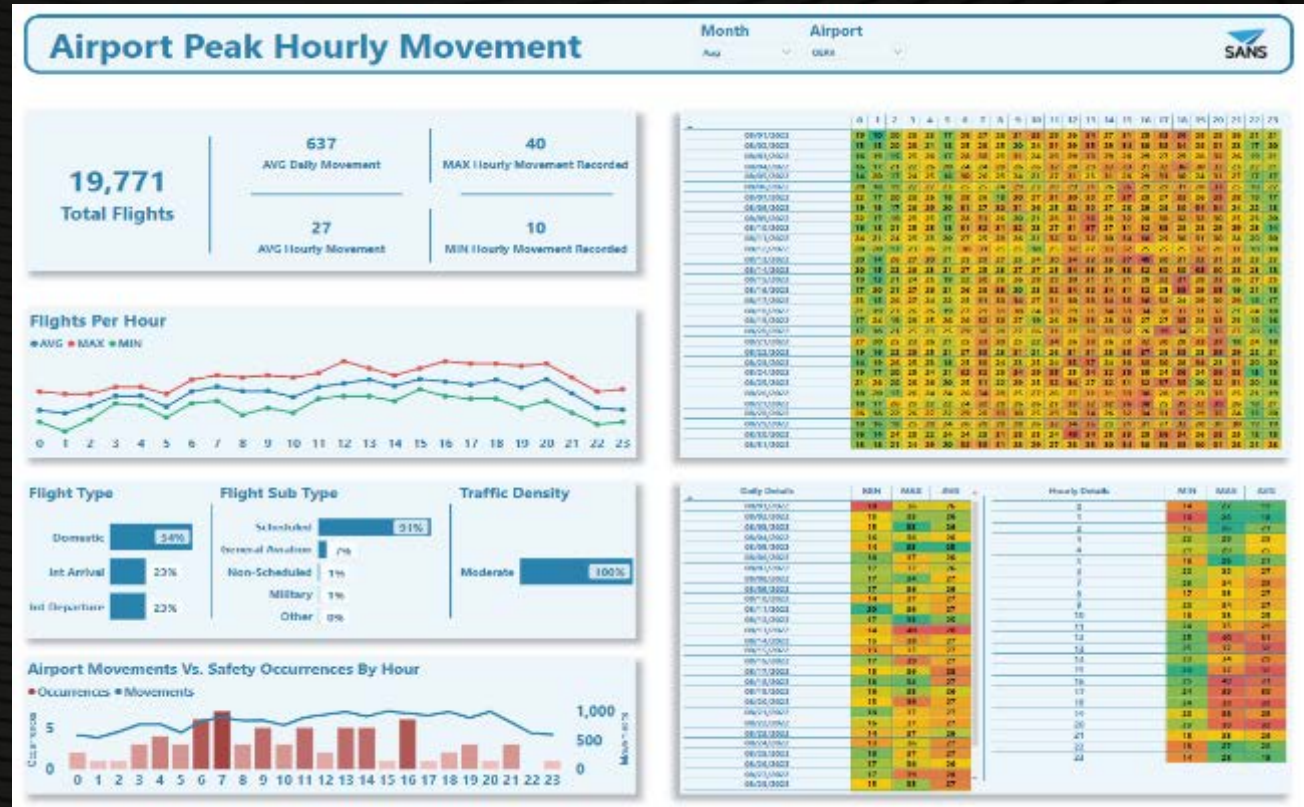
2023

WWW.SANS.COM.SA

BEYOND 

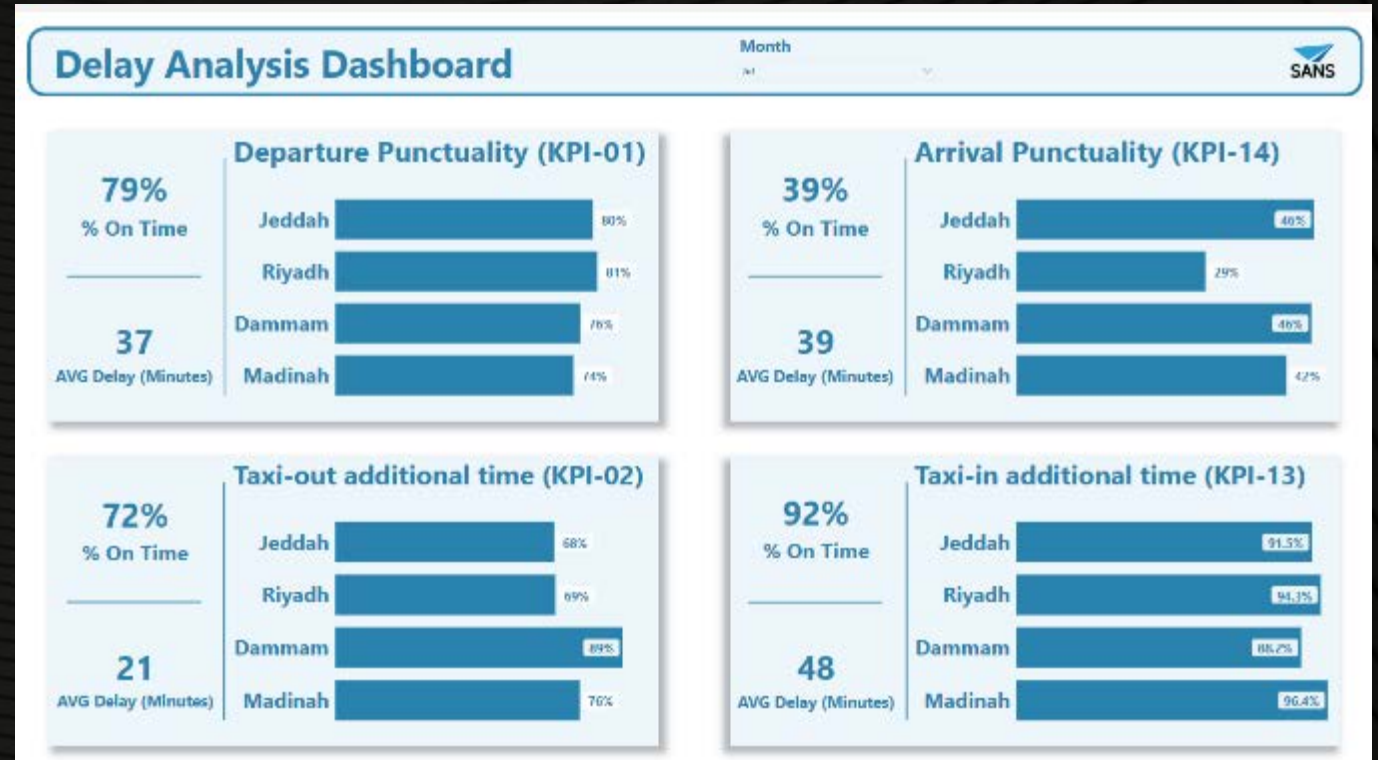


SANS ATFM is holding accountability on processing and disseminating statistics reports as per required regulation and operation needs. ATFM section has developed a dashboard to support in balancing traffic demand Vs. capacity monitor workload and optimize airspace utilization.



ATFM KPIs

- **KPI 01**
percentage for all flight departing the gate on time compared to schedule
- **KPI 02**
measuring the actual taxi-out time compared to the reference taxi-out time
- **KPI 13**
actual taxi-in time compared to the reference taxi-in time
- **KPI 14**
percentage of all arriving flight to the gate on time compared to schedule



Adjacent FIR Dashboard

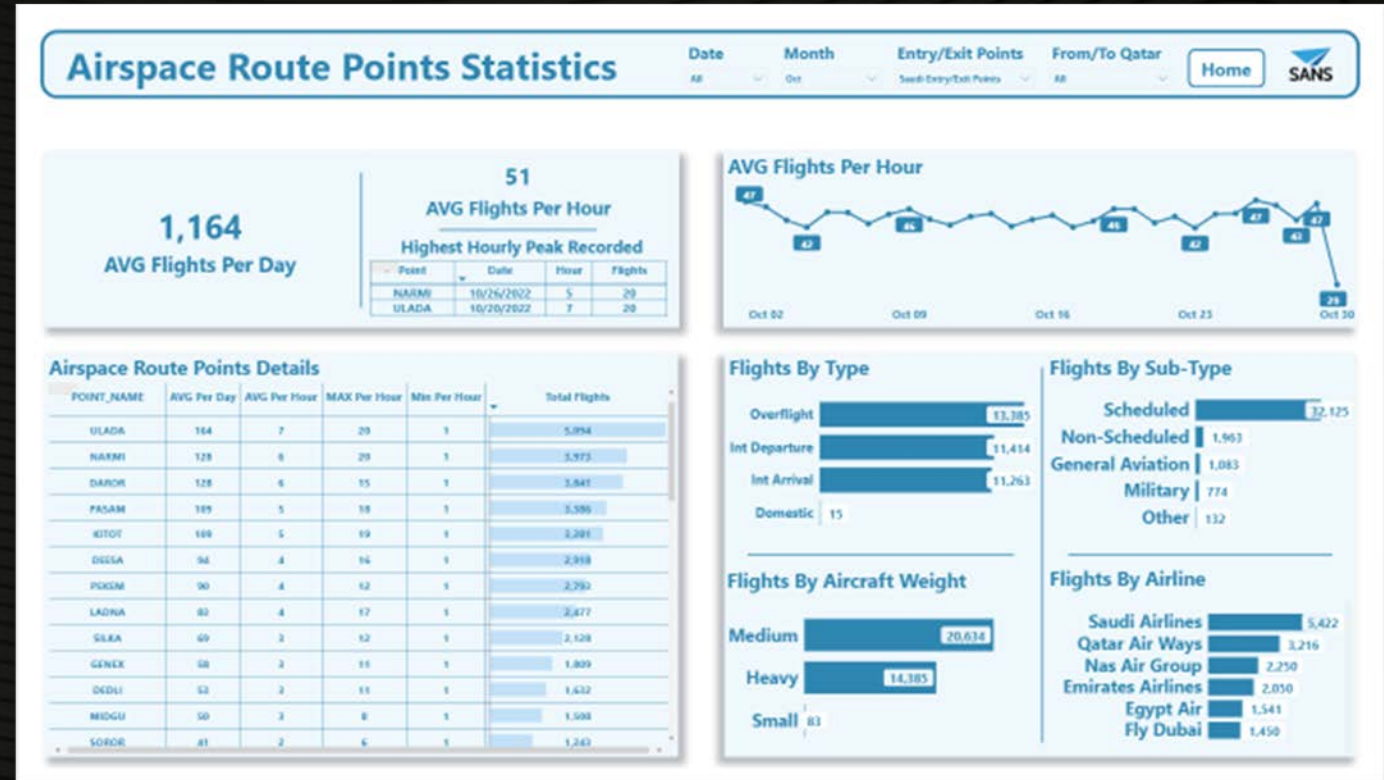
This tool support the ATFM in
 1- Monitor the traffic demand interaction with all adjacent FIRs

2- Support the decision making, through all phases (strategic, pre-tactical and tactical) in balancing demand against available capacity



Waypoint Dashboard

This tool support ATFM in Identifying the peak traffic demand over any waypoint in the FIR and also study the ATS route utilization, aeronautical studies and other



ATC Sector Dashboard

This tool support the ATFM team in

- 1- Maintain sector monitoring
- 2- Ensure proper ATCO workload
- 3- Proper resource utilization based on demand
- 4- Identifying the peak traffic trends
- 5- Analyzation of traffic peak, traffic trends, AVG traffic flow per hour, day, month and more filters can be applied as needed





THANK YOU



BEYOND