

Coronavirus disease (COVID-19)

Situation Report – 144

Data as received by WHO from national authorities by 10:00 CEST, 12 June 2020

Highlights

WHO has published a rapid advice guidance on the [Use of chest imaging in COVID-19](#). The guide examines available evidence and makes recommendations for the use of radiography, computed tomography and ultrasound for acute care of adult patients with suspected, probable or confirmed COVID-19 at different levels of disease severity.

The private sector plays a critical role in the preparedness and response activities for COVID-19 locally, nationally and globally. WHO has published [‘Asks’ to the private sector in the response to COVID-19](#), such as protecting stakeholders and businesses, making essential supplies available, and providing financial support.

[The Government of Canada has agreed to contribute over US \\$5 million](#) to the WHO Regional Office for the Americas to support COVID-19 response activities, including increasing access to personal protective equipment and other critical supplies. The contribution will focus on supporting marginalized and vulnerable communities in 23 countries in the Americas.

Doctors and nurses on the frontlines of the COVID-19 response in the Republic of the Congo have [shared stories about their daily lives, personal sacrifices and inspirations](#).

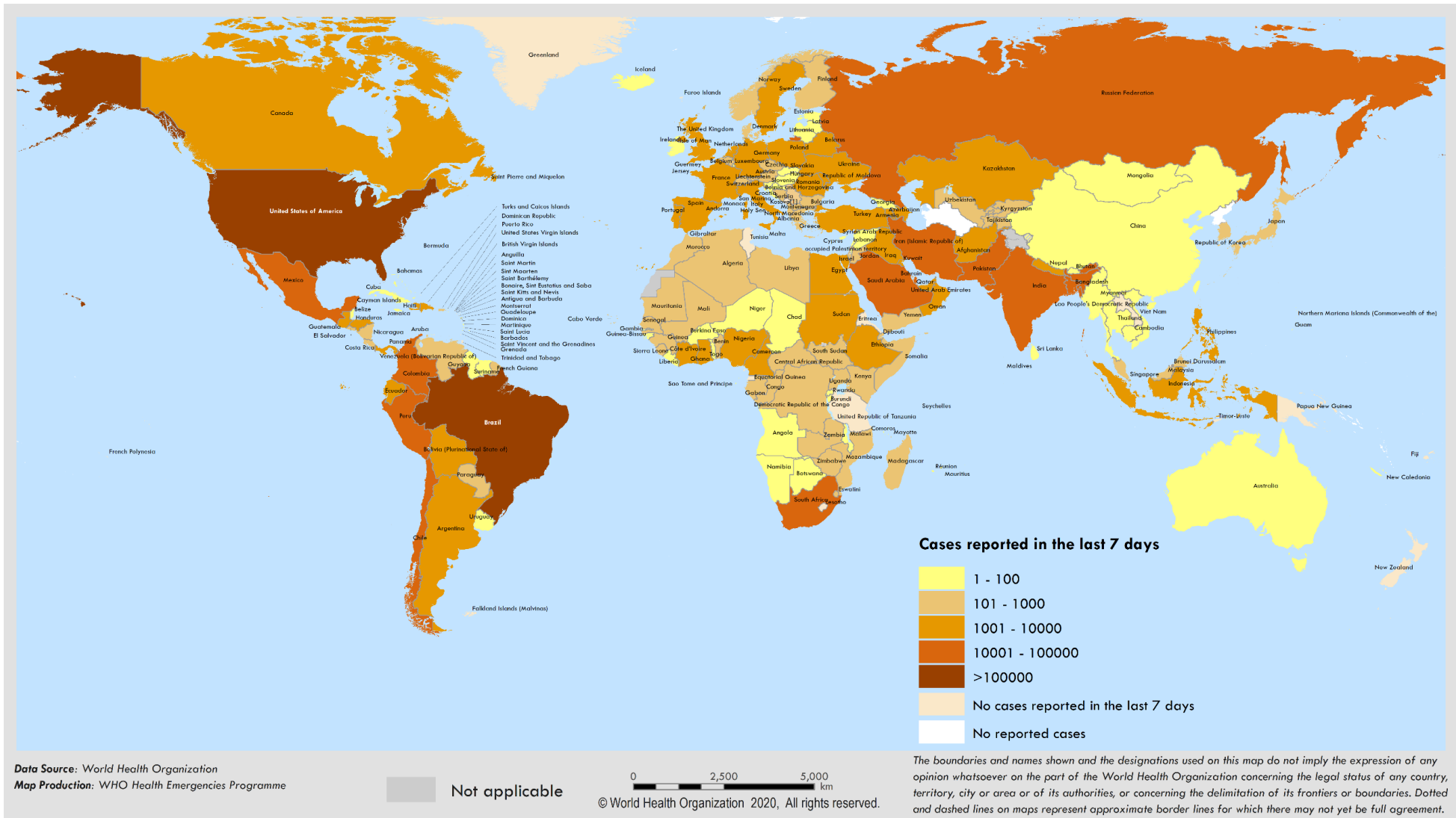
Situation in numbers (by WHO Region)

Total (new cases in last 24 hours)

Globally	7 410 510 cases (136 572)	418 294 deaths (4 925)
Africa	155 762 cases (5 680)	3 700 deaths (107)
Americas	3 560 591 cases (75 346)	192 944 deaths (3 401)
Eastern Mediterranean	716 151 cases (19 310)	15 947 deaths (366)
Europe	2 358 953 cases (19 808)	186 889 deaths (565)
South-East Asia	422 825 cases (15 411)	11 645 deaths (474)
Western Pacific	195 487 cases (1 017)	7 156 deaths (12)

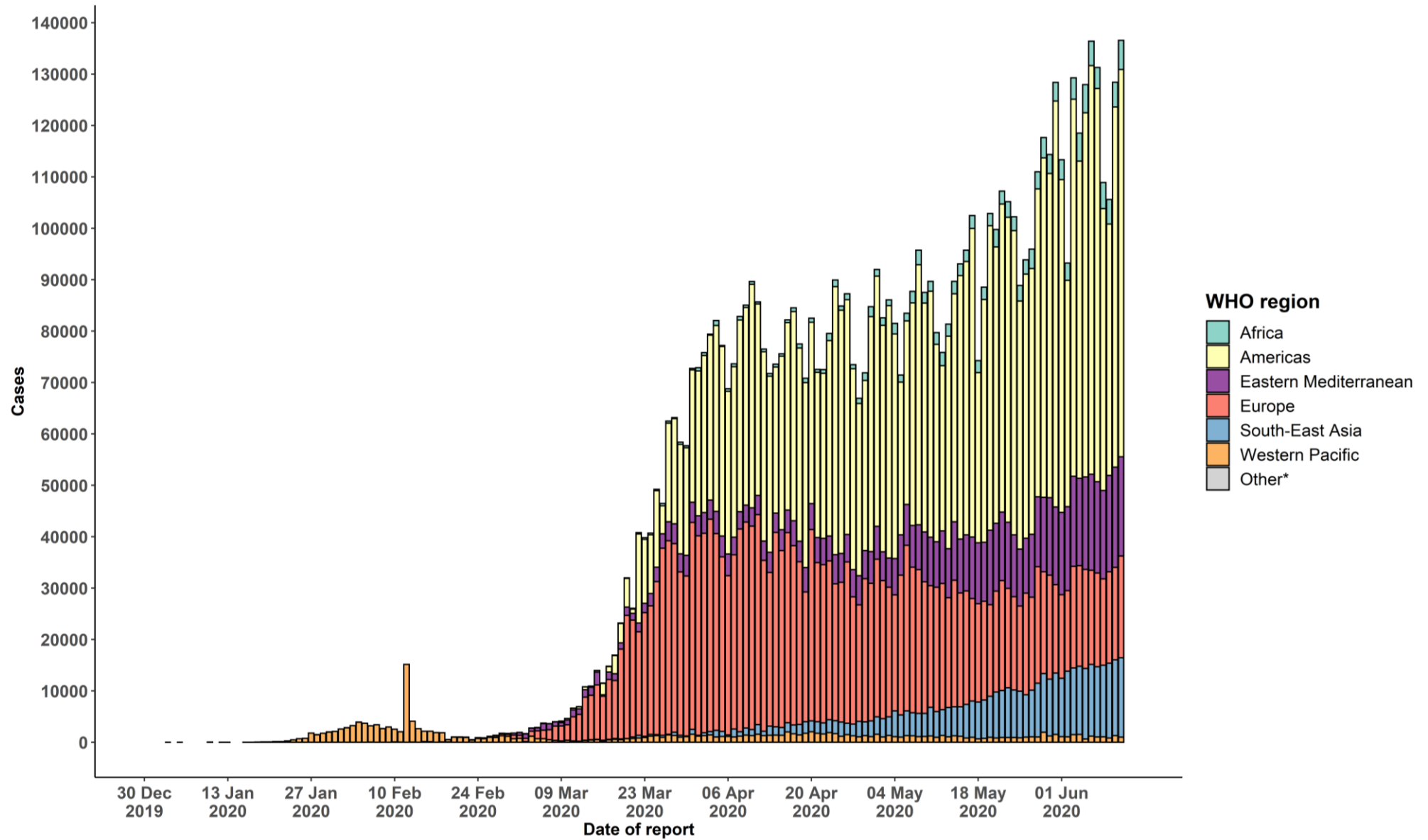
Surveillance

Figure 1. Number of confirmed COVID-19 cases reported in the last seven days by country, territory or area, 06 June to 12 June**



**See [Annex 1](#) for data, table and figure notes.

Figure 2. Number of confirmed COVID-19 cases, by date of report and WHO region, 30 December through 12 June**



**See [Annex 1](#) for data, table and figure notes.

Table 1. Countries, territories or areas with reported laboratory-confirmed COVID-19 cases and deaths, by WHO region. Data as of 10 AM CEST, 12 June 2020**

Reporting Country/ Territory/Area	Total confirmed cases	Total confirmed new cases	Total deaths	Total new deaths	Transmission classification ⁱ	Days since last reported case
Africa						
South Africa	58 568	3 147	1 284	74	Community transmission	0
Nigeria	14 554	681	387	5	Community transmission	0
Algeria	10 589	105	741	9	Community transmission	0
Ghana	10 358	157	48	0	Community transmission	0
Cameroon	8 681	0	215	0	Community transmission	1
Senegal	4 759	119	55	1	Community transmission	0
Democratic Republic of the Congo	4 514	125	97	1	Community transmission	0
Côte d'Ivoire	4 404	223	41	0	Community transmission	0
Guinea	4 372	81	23	0	Community transmission	0
Gabon	3 463	169	23	2	Community transmission	0
Kenya	3 215	121	92	3	Community transmission	0
Ethiopia	2 670	164	40	5	Clusters of cases	0
Central African Republic	2 044	156	5	0	Clusters of cases	0
Mali	1 722	55	97	1	Community transmission	0
South Sudan	1 606	0	22	2	Clusters of cases	2
Guinea-Bissau	1 389	0	12	0	Community transmission	3
Mauritania	1 283	0	71	0	Clusters of cases	1
Zambia	1 252	0	10	0	Community transmission	1
Madagascar	1 203	41	10	0	Clusters of cases	0
Sierra Leone	1 085	23	50	0	Community transmission	0
Equatorial Guinea	1 043	0	12	0	Community transmission	19

Reporting Country/ Territory/Area	Total confirmed cases	Total confirmed new cases	Total deaths	Total new deaths	Transmission classification ¹	Days since last reported case
Niger	974	0	65	0	Community transmission	2
Burkina Faso	891	0	53	0	Community transmission	2
Chad	848	2	72	0	Community transmission	0
Uganda	808	14	0	0	Sporadic cases	0
Congo	745	17	25	1	Community transmission	0
Cabo Verde	657	41	6	1	Clusters of cases	0
Togo	522	0	13	0	Community transmission	1
United Republic of Tanzania	509	0	21	0	Community transmission	35
Rwanda	494	18	2	0	Sporadic cases	0
Mozambique	489	17	2	0	Clusters of cases	0
Malawi	481	26	4	0	Clusters of cases	0
Eswatini	449	51	3	0	Clusters of cases	0
Liberia	410	13	31	0	Community transmission	0
Benin	390	51	5	1	Community transmission	0
São Tomé and Príncipe	388	0	10	0	Clusters of cases	1
Mauritius	337	0	10	0	Clusters of cases	6
Zimbabwe	332	12	4	0	Sporadic cases	0
Comoros	162	0	2	0	Community transmission	1
Angola	118	5	5	1	Clusters of cases	0
Burundi	94	11	1	0	Clusters of cases	0
Botswana	48	0	1	0	Clusters of cases	1
Eritrea	41	0	0	0	Sporadic cases	7
Namibia	31	0	0	0	Sporadic cases	3

Reporting Country/ Territory/Area	Total confirmed cases	Total confirmed new cases	Total deaths	Total new deaths	Transmission classification ¹	Days since last reported case
Gambia	28	0	1	0	Sporadic cases	3
Seychelles	11	0	0	0	Clusters of cases	66
Lesotho	4	0	0	0	Sporadic cases	8
Territories ⁱⁱ						
Mayotte	2 240	34	28	0	Clusters of cases	0
Réunion	487	1	1	0	Clusters of cases	0
Americas						
United States of America	1 988 646	20 315	112 810	832	Community transmission	0
Brazil	772 416	32 913	39 680	1 274	Community transmission	0
Peru	208 823	5 087	5 903	165	Community transmission	0
Chile	154 092	5 596	2 648	173	Community transmission	0
Mexico	129 184	4 883	15 357	708	Community transmission	0
Canada	97 125	472	7 960	63	Community transmission	0
Ecuador	44 440	0	3 720	0	Community transmission	1
Colombia	43 682	1 604	1 433	61	Community transmission	0
Argentina	25 987	1 226	741	24	Community transmission	0
Dominican Republic	21 437	629	561	11	Community transmission	0
Panama	17 889	656	413	10	Community transmission	0
Bolivia (Plurinational State of)	15 281	637	512	25	Community transmission	0
Guatemala	8 221	355	316	27	Community transmission	0
Honduras	7 360	425	290	19	Community transmission	0
Haiti	3 796	134	58	2	Community transmission	0
El Salvador	3 373	99	64	4	Community transmission	0
Venezuela (Bolivarian Republic of)	2 738	106	23	0	Community transmission	0

Reporting Country/ Territory/Area	Total confirmed cases	Total confirmed new cases	Total deaths	Total new deaths	Transmission classification ⁱ	Days since last reported case
Cuba	2 219	8	84	1	Clusters of cases	0
Nicaragua	1 655	0	55	0	Community transmission	1
Costa Rica	1 461	86	12	1	Clusters of cases	0
Paraguay	1 230	28	11	0	Community transmission	0
Uruguay	847	1	23	0	Clusters of cases	0
Jamaica	598	0	10	0	Clusters of cases	3
Guyana	156	0	12	0	Clusters of cases	1
Suriname	144	7	2	0	Clusters of cases	0
Trinidad and Tobago	117	0	8	0	Sporadic cases	11
Bahamas	103	0	11	0	Clusters of cases	5
Barbados	96	0	7	0	Clusters of cases	1
Saint Vincent and the Grenadines	27	0	0	0	Sporadic cases	3
Antigua and Barbuda	25	0	3	0	Clusters of cases	39
Grenada	23	0	0	0	Clusters of cases	16
Belize	20	0	2	0	Sporadic cases	1
Saint Lucia	19	0	0	0	Sporadic cases	6
Dominica	16	0	0	0	Clusters of cases	62
Saint Kitts and Nevis	15	0	0	0	Sporadic cases	52
Territoriesⁱⁱ						
Puerto Rico	5 352	23	144	1	Community transmission	0
French Guiana	917	52	2	0	Clusters of cases	0
Martinique	202	0	14	0	Clusters of cases	5
Cayman Islands	180	4	1	0	Clusters of cases	0
Guadeloupe	164	0	14	0	Clusters of cases	6

Reporting Country/ Territory/Area	Total confirmed cases	Total confirmed new cases	Total deaths	Total new deaths	Transmission classification ¹	Days since last reported case
Bermuda	141	0	9	0	Clusters of cases	9
Aruba	101	0	3	0	No cases	37
Sint Maarten	77	0	15	0	Sporadic cases	6
United States Virgin Islands	72	0	6	0	Clusters of cases	1
Saint Martin	41	0	3	0	Sporadic cases	12
Curaçao	22	0	1	0	Sporadic cases	1
Falkland Islands (Malvinas)	13	0	0	0	Clusters of cases	47
Turks and Caicos Islands	12	0	1	0	Sporadic cases	45
Montserrat	11	0	1	0	Sporadic cases	59
British Virgin Islands	8	0	1	0	Sporadic cases	27
Bonaire, Sint Eustatius and Saba	7	0	0	0	No cases	17
Saint Barthélemy	6	0	0	0	Sporadic cases	73
Anguilla	3	0	0	0	Sporadic cases	69
Saint Pierre and Miquelon	1	0	0	0	Sporadic cases	65
Eastern Mediterranean						
Iran (Islamic Republic of)	180 176	2 238	8 584	78	Community transmission	0
Pakistan	125 521	5 985	2 463	107	Clusters of cases	0
Saudi Arabia	116 021	3 733	857	38	Clusters of cases	0
Qatar	75 071	1 476	69	3	Community transmission	0
United Arab Emirates	40 986	479	286	2	Pending	0
Egypt	39 726	1 442	1 395	53	Clusters of cases	0
Kuwait	34 432	609	279	4	Clusters of cases	0
Afghanistan	23 546	656	446	20	Clusters of cases	0
Oman	19 954	1 067	89	5	Clusters of cases	0

Reporting Country/ Territory/Area	Total confirmed cases	Total confirmed new cases	Total deaths	Total new deaths	Transmission classification ⁱ	Days since last reported case
Iraq	16 675	1 261	457	31	Clusters of cases	0
Bahrain	16 667	0	34	2	Clusters of cases	1
Morocco	8 537	29	211	0	Clusters of cases	0
Sudan	6 730	148	413	12	Community transmission	0
Djibouti	4 398	25	37	3	Clusters of cases	0
Somalia	2 513	61	85	0	Sporadic cases	0
Lebanon	1 402	14	31	1	Clusters of cases	0
Tunisia	1 087	0	49	0	Community transmission	8
Jordan	890	27	9	0	Clusters of cases	0
Yemen	595	31	137	7	Pending	0
Libya	393	15	5	0	Clusters of cases	0
Syrian Arab Republic	164	12	6	0	Community transmission	0
Territoriesⁱⁱ						
occupied Palestinian territory	667	2	5	0	Clusters of cases	0
Europe						
Russian Federation	511 423	8 987	6 715	183	Clusters of cases	0
The United Kingdom	291 413	1 266	41 279	151	Community transmission	0
Spain	242 707	427	27 136	0	Community transmission	0
Italy	236 142	379	34 167	53	Community transmission	0
Germany	185 674	258	8 763	8	Community transmission	0
Turkey	174 023	987	4 763	17	Community transmission	0
France	151 503	358	29 284	27	Community transmission	0
Belgium	59 711	142	9 636	7	Community transmission	0
Belarus	51 816	750	293	5	Community transmission	0

Reporting Country/ Territory/Area	Total confirmed cases	Total confirmed new cases	Total deaths	Total new deaths	Transmission classification ¹	Days since last reported case
Sweden	48 288	1 474	4 814	19	Community transmission	0
Netherlands	48 251	164	6 044	2	Community transmission	0
Portugal	35 910	310	1 504	9	Community transmission	0
Switzerland	30 961	33	1 674	0	Community transmission	0
Ukraine	29 753	683	870	16	Community transmission	0
Poland	28 201	444	1 215	9	Community transmission	0
Ireland	25 238	7	1 703	8	Community transmission	0
Romania	21 182	237	1 369	9	Community transmission	0
Israel	18 461	193	300	1	Pending	0
Austria	16 964	28	674	1	Community transmission	0
Armenia	15 281	612	258	13	Community transmission	0
Kazakhstan	13 872	313	67	0	Clusters of cases	0
Serbia	12 102	71	252	1	Pending	0
Denmark	12 035	19	593	0	Community transmission	0
Republic of Moldova	10 727	406	375	4	Community transmission	0
Czechia	9 886	62	329	1	Clusters of cases	0
Azerbaijan	8 882	352	108	6	Clusters of cases	0
Norway	8 594	18	242	3	Clusters of cases	0
Finland	7 064	24	325	1	Pending	0
Tajikistan	4 834	71	49	1	Pending	0
Uzbekistan	4 819	124	19	0	Clusters of cases	0
Luxembourg	4 052	3	110	0	Clusters of cases	0
Hungary	4 039	12	553	2	Community transmission	0
North Macedonia	3 542	175	169	5	Clusters of cases	0

Reporting Country/ Territory/Area	Total confirmed cases	Total confirmed new cases	Total deaths	Total new deaths	Transmission classification ⁱ	Days since last reported case
Greece	3 088	20	183	0	Clusters of cases	0
Bulgaria	3 086	197	168	1	Clusters of cases	0
Bosnia and Herzegovina	2 831	55	160	0	Community transmission	0
Croatia	2 249	0	106	0	Sporadic cases	1
Kyrgyzstan	2 166	37	26	0	Clusters of cases	0
Estonia	1 965	7	69	0	Sporadic cases	0
Iceland	1 807	0	10	0	Community transmission	4
Lithuania	1 752	19	74	0	Community transmission	0
Slovakia	1 541	8	28	0	Clusters of cases	0
Slovenia	1 488	0	109	0	Clusters of cases	1
Albania	1 416	31	36	2	Clusters of cases	0
Latvia	1 094	2	26	0	Clusters of cases	0
Cyprus	975	1	18	0	Clusters of cases	0
Andorra	852	0	51	0	Community transmission	7
Georgia	837	9	13	0	Community transmission	0
San Marino	695	0	42	0	Community transmission	7
Malta	640	5	9	0	Sporadic cases	0
Montenegro	324	0	9	0	Clusters of cases	37
Monaco	99	0	1	0	Sporadic cases	5
Liechtenstein	83	0	1	0	Pending	47
Holy See	12	0	0	0	Sporadic cases	36
Territoriesⁱⁱ						
Kosovo ^[1]	1 326	28	31	0	Community transmission	0
Isle of Man	336	0	24	0	Pending	21

Reporting Country/ Territory/Area	Total confirmed cases	Total confirmed new cases	Total deaths	Total new deaths	Transmission classification ¹	Days since last reported case
Jersey	313	0	30	0	Community transmission	2
Guernsey	252	0	13	0	Community transmission	40
Faroe Islands	187	0	0	0	Pending	49
Gibraltar	176	0	0	0	Clusters of cases	3
Greenland	13	0	0	0	Pending	14
South-East Asia						
India	297 535	10 956	8 498	396	Clusters of cases	0
Bangladesh	78 052	3 187	1 049	37	Community transmission	0
Indonesia	35 295	979	2 000	41	Community transmission	0
Nepal	4 614	250	15	0	Sporadic cases	0
Thailand	3 129	4	58	0	Clusters of cases	0
Maldives	1 976	14	8	0	Clusters of cases	0
Sri Lanka	1 877	8	11	0	Clusters of cases	0
Myanmar	261	13	6	0	Clusters of cases	0
Bhutan	62	0	0	0	Sporadic cases	1
Timor-Leste	24	0	0	0	Clusters of cases	49
Western Pacific						
China	84 659	7	4 645	0	Clusters of cases	0
Singapore	39 387	422	25	0	Clusters of cases	0
Philippines	24 175	443	1 036	9	Community transmission	0
Japan	17 332	40	922	2	Clusters of cases	0
Republic of Korea	12 003	56	277	1	Clusters of cases	0
Malaysia	8 369	31	118	0	Clusters of cases	0

Reporting Country/ Territory/Area	Total confirmed cases	Total confirmed new cases	Total deaths	Total new deaths	Transmission classification ⁱ	Days since last reported case
Australia	7 285	18	102	0	Clusters of cases	0
New Zealand	1 154	0	22	0	Clusters of cases	21
Viet Nam	332	0	0	0	Clusters of cases	3
Mongolia	194	0	0	0	Sporadic cases	3
Brunei Darussalam	141	0	2	0	Clusters of cases	35
Cambodia	126	0	0	0	Sporadic cases	5
Lao People's Democratic Republic	19	0	0	0	Sporadic cases	60
Fiji	18	0	0	0	Sporadic cases	52
Papua New Guinea	8	0	0	0	Sporadic cases	50
Territoriesⁱⁱ						
Guam	174	0	5	0	Clusters of cases	1
French Polynesia	60	0	0	0	Sporadic cases	37
Northern Mariana Islands (Commonwealth of the)	30	0	2	0	Pending	2
New Caledonia	21	0	0	0	Sporadic cases	2
Subtotal for all regions	7 409 769	136 572	418 281	4 925		
Other*	741	0	13	0	Not applicable	-
Grand total	7 410 510	136 572	418 294	4 925		

**See [Annex 1](#) for data, table and figure notes.

Technical guidance and other resources

- To view all technical guidance documents regarding COVID-19, please go to [this webpage](#).
- Updates from WHO regional offices
 - [WHO AFRO](#)
 - [WHO EMRO](#)
 - [WHO EURO](#)
 - [WHO PAHO](#)
 - [WHO SEARO](#)
 - [WHO WPRO](#)
- [Research and Development](#)
- [Online courses on COVID-19](#) and in [additional national languages](#)
- [The Strategic Preparedness and Response Plan](#) (SPRP) outlining the support the international community can provide to all countries to prepare and respond to the virus
- [WHO Coronavirus Disease \(COVID-19\) Dashboard](#)
- [Weekly COVID-19 Operations Updates](#)

Recommendations and advice for the public

- [Protect yourself](#)
- [Questions and answers](#)
- [Travel advice](#)
- [EPI-WIN](#): tailored information for individuals, organizations and communities

Case definitions

WHO periodically updates the [Global Surveillance for human infection with coronavirus disease \(COVID-19\)](#) document which includes surveillance definitions.

Definition of COVID-19 death

A COVID-19 death is defined for surveillance purposes as a death resulting from a clinically compatible illness in a probable or confirmed COVID-19 case, unless there is a clear alternative cause of death that cannot be related to COVID-19 disease (e.g. trauma). There should be no period of complete recovery between the illness and death.

Further guidance for certification and classification (coding) of COVID-19 as cause of death is available [here](#) and [here](#).

Annex 1: Data, table and figure notes

Caution must be taken when interpreting all data presented. Differences are to be expected between information products published by WHO, national public health authorities, and other sources using different inclusion criteria and different data cut-off times. While steps are taken to ensure accuracy and reliability, all data are subject to continuous verification and change. Case detection, definitions, testing strategies, reporting practice, and lag times differ between countries/territories/areas. These factors, amongst others, influence the counts presented, with variable underestimation of true case and death counts, and variable delays to reflecting these data at global level.

The designations employed, and the presentation of these materials do not imply the expression of any opinion whatsoever on the part of WHO concerning the legal status of any country, territory or area or of its authorities, or concerning the delimitation of its frontiers or boundaries. Dotted and dashed lines on maps represent approximate border lines for which there may not yet be full agreement. Countries, territories and areas are arranged under the administering WHO region.

The mention of specific companies or of certain manufacturers' products does not imply that they are endorsed or recommended by WHO in preference to others of a similar nature that are not mentioned. Errors and omissions excepted, the names of proprietary products are distinguished by initial capital letters.

[1] All references to Kosovo should be understood to be in the context of the United Nations Security Council resolution 1244 (1999). In the map, number of cases of Serbia and Kosovo (UNSCR 1244, 1999) have been aggregated for visualization purposes.

Counts reflect laboratory-confirmed cases and deaths, based on [WHO case definitions](#), unless stated otherwise (see Country, territory, or area-specific updates and errata), and include both domestic and repatriated cases.

Other*: includes cases reported from international conveyances.

Due to the recent trend of countries conducting data reconciliation exercises which remove large numbers of cases or deaths from their total counts, WHO will now display such data as negative numbers in the "new cases" / "new deaths" columns as appropriate. This will aid readers in identifying when such adjustments occur. When additional details become available that allow the subtractions to be suitably apportioned to previous days, graphics will be updated accordingly. Prior situation reports will not be edited; see covid19.who.int for the most up-to-date data.

Additional table notes

ⁱ Transmission classification is based on a process of country/territory/area self-reporting. Classifications are reviewed on a weekly basis and may be revised as new information becomes available. and. Differing degrees of transmission may be present within countries/territories/areas; classification is based on the highest category reported within a country/territory/area. Categories:

- No cases: with no confirmed cases
- Sporadic cases: with one or more cases, imported or locally detected
- Clusters of cases: experiencing cases, clustered in time, geographic location and/or by common exposures
- Community transmission: experiencing larger outbreaks of local transmission defined through an assessment of factors including, but not limited to: large numbers of cases not linkable to transmission chains; large numbers of cases from sentinel lab surveillance; and/or multiple unrelated clusters in several areas of the country/territory/area
- Pending: transmission classification has not been reported to WHO

ii “Territories” include territories, areas, overseas dependencies and other jurisdictions of similar status.

Country, territory, or area-specific updates and errata

- None