



ICAO



RWANDA
CIVIL AVIATION
AUTHORITY



AERODROME EMERGENCY PLANNING

*Rwanda – Experience, Challenges &
Recommendations*

Monday, May 16, 2022

RWANDA

Rwanda is a resilient, forward-looking country with a vision of becoming a globally competitive knowledge-based economy by 2024.

- ▶ In the last 27 years, Rwanda has redefined itself as the preferred investment and tourism destination of the world. It prides itself in being among the easiest, safest and cleanest places to do business and travel to in the world

Currently, the services sector is the largest contributor to GDP. The sector contributes about 48%, followed by Agriculture at 29% and the Industrial sectors 16% respectively.



ICAO



RWANDA
CIVIL AVIATION
AUTHORITY



ELEMENTS OF AIR TRANSPORT IN RWANDA TODAY



ABOUT RWANDA AIRPORTS COMPANY

RAC is a subsidiary of "The Aviation, Travel and Logistics Holding Limited", a Holding Group wholly owned by the government of Rwanda. Rwanda Airports Company Ltd has within its responsibilities, the daily management of airports operations and provision of air navigation services in the country.

RAC manages three airports (Kigali international Airport, Kamembe Airport and Gisenyi Airport) and three airstrips (Ruhengeri, Butare and Nemba Airstrip)



ICAO



RWANDA
CIVIL AVIATION
AUTHORITY



KIGALI INTERNATIONAL AIRPORT

Kigali international airport is located in Kigali, the capital of Rwanda. In the last two consecutive years, KIA was ranked amongst the top ten best airports in Africa, based on customer service surveys.

The airport operates 24/7 and is dedicated to ensuring safety and supporting air navigation services with the latest technologies.



ICAO



RWANDA
CIVIL AVIATION
AUTHORITY



Requirement

- ▶ Part 26 of the Rwanda Civil Aviation Regulations states in 26.485 that:
- ▶ (a) An operator shall establish an aerodrome emergency plan at the aerodrome, which shall—
- ▶ (1) be commensurate with the aircraft operations and activities conducted at the aerodrome; and
- ▶ (2) provide for the coordination of the actions to be taken in the event of an emergency occurring at the aerodrome or in its vicinity.



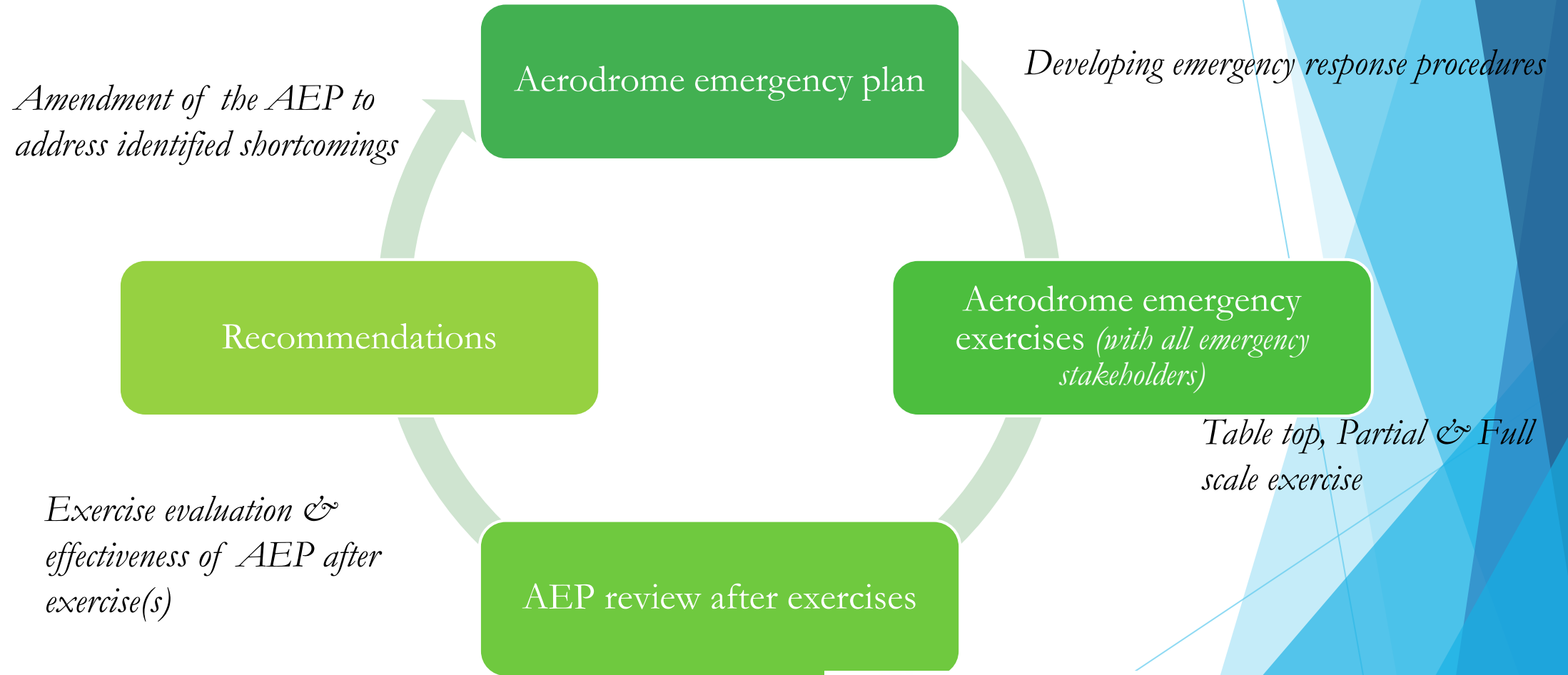
ICAO



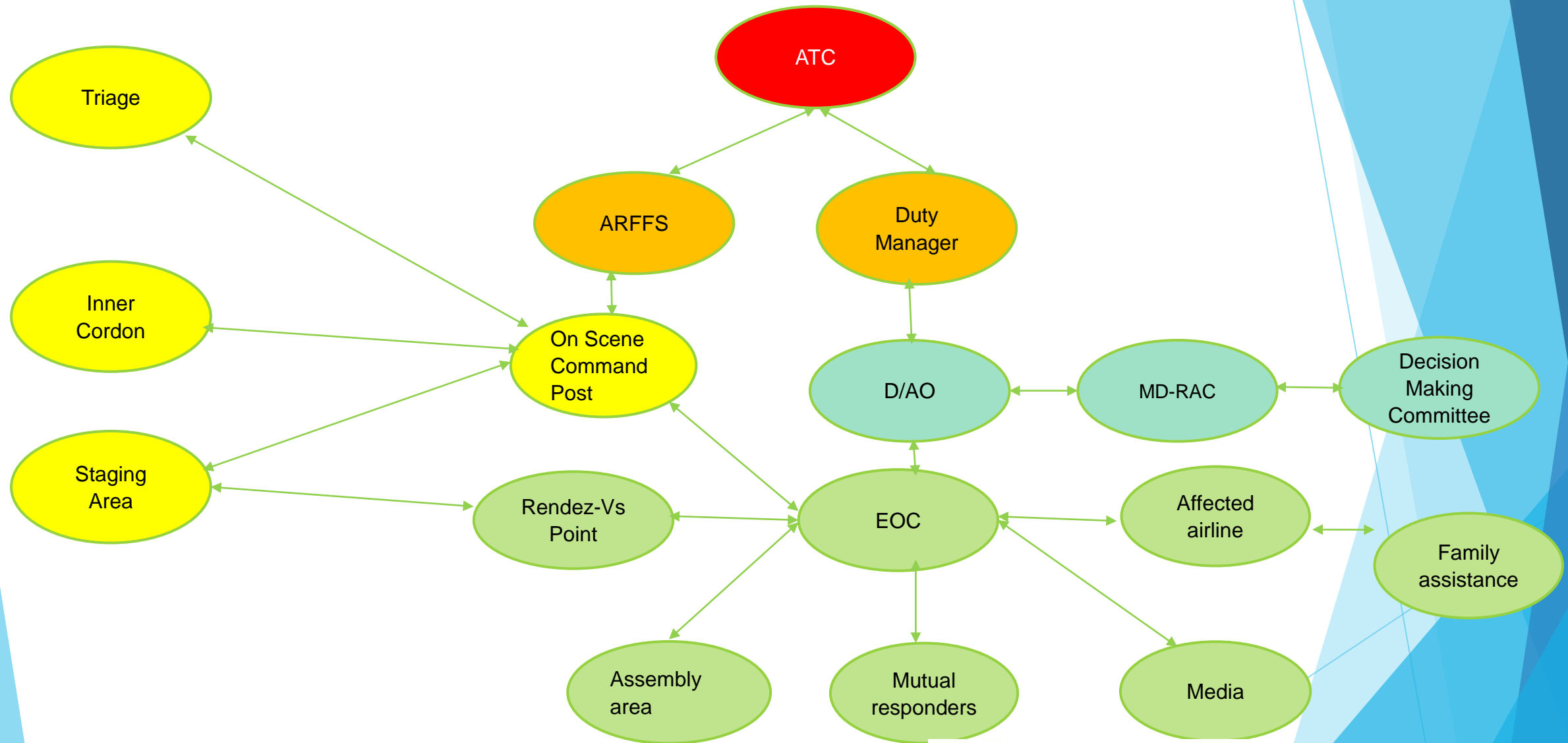
RWANDA
CIVIL AVIATION
AUTHORITY



KIA AERODROME EMERGENCY PLANNING



KIA EMERGENCY MANAGEMENT INFORMATION FLOW CHART



CHALLENGES

- Limited training in emergency management
- Radio communication issues (in terms of user familiarity and navigating in different channels)
- Dispatching all arrived support to rendez-vous point without looking at what is needed. This may create congestion and hamper movement of emergency vehicles like ambulance evacuating victims.
- Airlines' ERP not synchronized with the AEP.

RECOMMENDATIONS

- Airport staff trainings in all areas of emergency response.
- All responders should be trained on radio communication
- All responders need to synchronize their emergency response plans with the aerodrome emergency plan for effective response to any emergency which may arise.
- Coordination between Operations Control Center (OCC) and Emergency Control Center (EOC) is very important and should be maintained for effective emergency response.

THANK YOU



ICAO



RWANDA
CIVIL AVIATION
AUTHORITY

