



กองด่านควบคุมโรคติดต่อ
ระหว่างประเทศและกักกันโรค

17 TA : POINTS OF ENTRY- POEs AND BORDER HEALTH

Dr. Rome Buathong, MD. MIH. FETP.
Director of Division of International Communicable
Disease Control Port and Quarantine
Department of Disease Control



Agenda

- **Overview Point of Entry in Thailand**
- **POE1. Core capacity requirements at all times for PoEs (airports, ports and ground crossings)**
- **POE2. Public health response at PoEs**
- **POE3. Risk-based approach to international travel-related measures**

JEE components - scoring & grading

Scoring	Grading
No capacity – 1	Capacity is not in place
Limited capacity – 2	Capacity is in development stage (some measures are achieved)
Developed capacity – 3	Capacity is in place; however, there is the issue of sustainability as evinced by lack of inclusion in national health sector planning and/or secured funding
Demonstrated capacity – 4	Capacity is in place, sustainable for a few more years and can be measured by the inclusion of IHR capacities in the national health sector plan
Sustainable capacity – 5	Capacity is functional and sustainable and the country is supporting other countries in its implementation

JEE Technical Team

	Technical area	Technical area lead
1	P1. Legal instruments	PREVENT
2	P2. Financing	
3	P3. IHR coordination, national IHR Focal Point functions & advocacy	
4	P4. AMR	
5	P5. Zoonotic disease	
6	P6. Food safety	
7	P7. Biosafety & biosecurity	
8	P8. Immunization	
9	D1. National lab system	DETECT
10	D2. Surveillance	
11	D3. Human resources	
12	R1. Health emergency management	RESPONSE
13	R2. Linking public health & security authorities	
14	R3. Health services provision	
15	R4. Infection prevention & control	
16	R5. Risk communication & community engagement	
17	POE. Points of entry & border health	OTHERS
18	CE. Chemical events	
19	RE. Radiation emergencies	



กองด่านควบคุมโรคติดต่อ
ระหว่างประเทศและกักกันโรค



PoE3. Risk-based approach to international travel-related measures



PoE Passenger Screening Under Law (Communicable Disease Act. 2015)

Normal situations

- PoE screen passenger only from affected zone/countries of Dangerous Communicable Disease (Quarantinable diseases)
- PoE officer detect and isolate ill passenger for 13 Dangerous Communicable Diseases (Quarantinable diseases).
- PoE inspect vehicle/conveyance from affected zone/countries of Dangerous Communicable Diseases (Quarantinable diseases)



กองควบคุมโรคติดต่อ
และพ่วงประเทศและกักกันโรค

Dangerous communicable diseases (Quarantinable diseases) under Communicable Diseases Act B.E.2558



1

Plague



2

Smallpox



3

Crimean-Congo
hemorrhagic fever



4

West Nile fever



5

Yellow fever



6

Lassa fever



7

Nipah virus disease



8

Marburg virus
disease



9

Ebola virus disease



10

Hendra virus disease



11

Severe Acute
Respiratory Syndrome
(SARS)



12

Middle East
Respiratory Syndrome
(MERS)



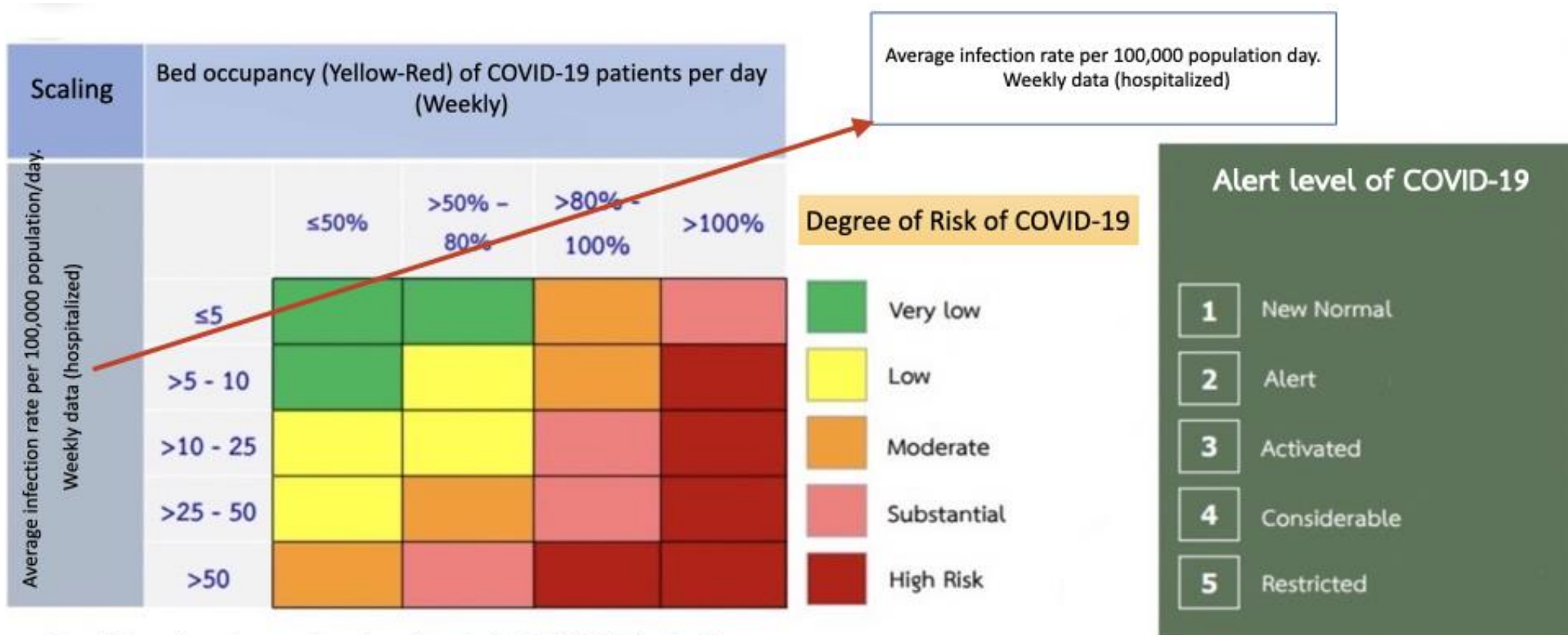
13

Extensively drug-resistant
tuberculosis (XDR-TB)



กองด่านควบคุมโรคติดต่อ
ระหว่างประเทศและกักกันโรค

Risk and alert level of COVID-19 Thailand, 2021-2022



Consideration factor the alert level of COVID-19 including

- Degree of Risk of COVID-19 (color)
- Coverage of two doses of vaccinations, Group 607 : Level5 < 50%, Level4; 50%-59%, Level3; 60%-69%
- Cluster outbreaks have been beyond the control potential of the disease and have co-occurred over several periods



กองด่านควบคุมโรคติดต่อระหว่างประเทศและกักกันโรค

The alert level and preventive measures for traveler entry into Thailand during May 2022

Risk Factors	Preventive and control measures critical to COVID-19 alert level.				
	Level 1	Level 2	Level 3	Level 4	Level 5
Risky Place	Available everywhere COVID-free	Limit access to closed space	Close the service centre Refrain from entering closed venues.	Open only the necessary for living.	
Participate in activity with a large number of people	Smart living	Criteria for the number of people to be able to gathering According to the level of risk of disease outbreaks (each province)			Less than 5 people
Travel across areas/ provinces	Public transportation COVID-Free		WFH, Screening before travel	WFH, Slow down travel across the area	WFH, Screening before entering area
Entry country	Normal	Start Test & Go	Open Sandbox	Quarantine (Reduction of Quarantine date)	All of Quarantinee

Consideration of the alert level of Covid-19 and preventive measures for disease control at the provincial level.



กองด่านควบคุมโรคติดต่อ
ระหว่างประเทศและกักกันโรค

COVID-19 alert level and Public advice establishment Sep. 2022 (The most recent before opening the country)

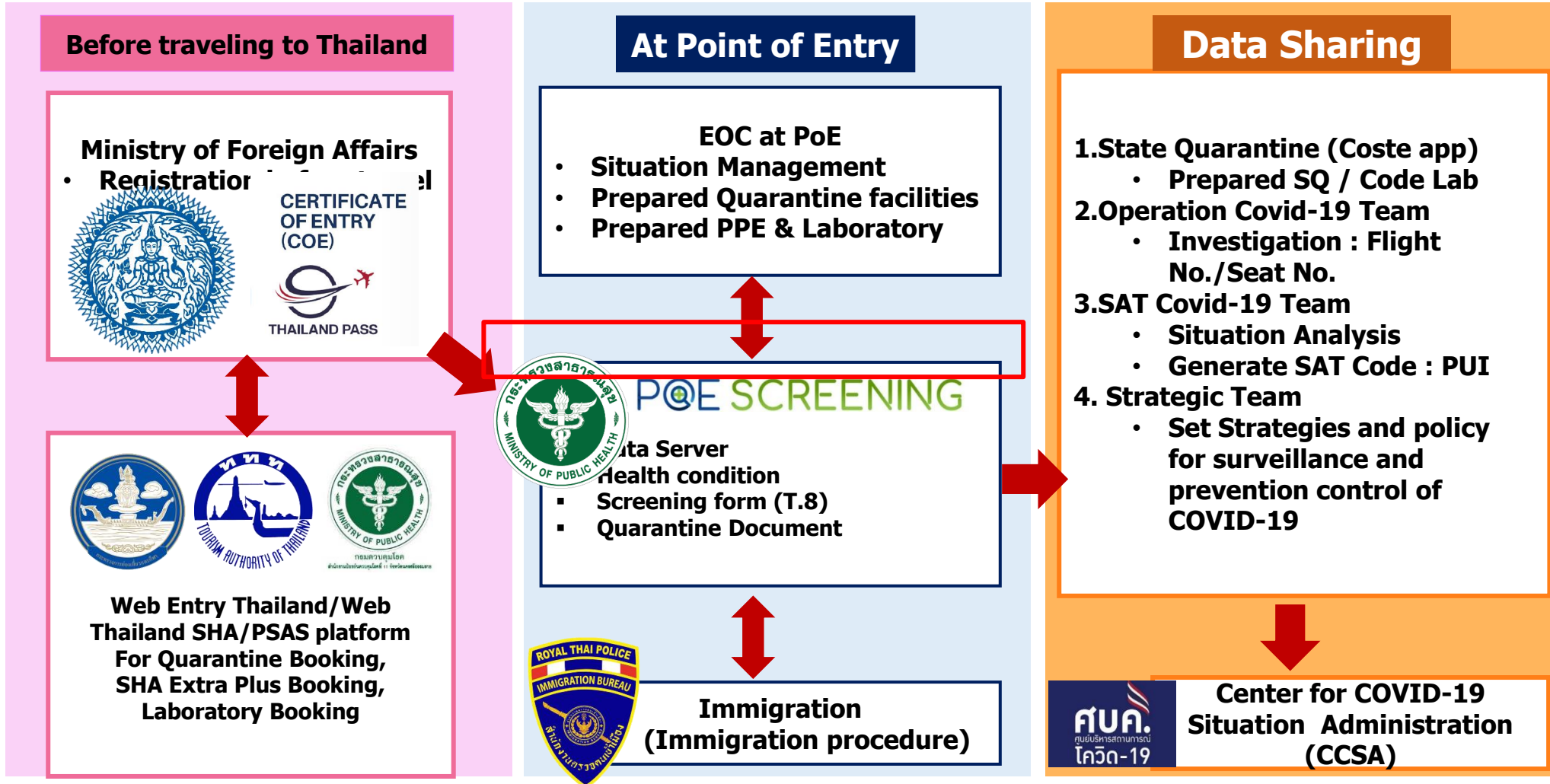
Focus on measures 2U : Universal Prevention should wear a mask and Universal Vaccination Group 608 (Chronic Disease) received the booster vaccine.

Risk Factors	Warning level for COVID-19 for the public and establishments				
	Level 1	Level 2	Level 3	Level 4	Level 5
• Risky place	Available everywhere	<u>Group 608 (Chronic Disease) did not meet the vaccination criteria.</u> <ul style="list-style-type: none"> Refrain from going to entertainment venues Avoid entering closed/crowded places 	<u>Everyone</u> <ul style="list-style-type: none"> Refrain from going to entertainment venues Avoid entering closed/crowded places 	<u>Everyone</u> <ul style="list-style-type: none"> Refrain from eating and drinking in the restaurant Refrain from entering all types of risky places. 	<u>Everyone</u> <ul style="list-style-type: none"> Refrain from going out if necessary for living, such as check up, buying food and supplies.
• Participate in activities with a large number of people	Participate in activities in a New Normal	<u>Group 608 (Chronic Disease) did not meet the vaccination criteria.</u> Avoid participating in crowded places	<u>Group 608 (Chronic Disease)/ traveller who did not meet the vaccination criteria.</u> <ul style="list-style-type: none"> Avoid participating in crowded places 	<u>Everyone</u> <ul style="list-style-type: none"> Avoid being close to others outside the home. Refrain from participating in group activities 	<u>Everyone</u> <ul style="list-style-type: none"> No gatherings >5 people. Refrain from being close to each other in the house. (People who are not vaccinated)
• Travel across areas / provinces	Accessible by public transport	<u>Group 608 (Chronic Disease) did not meet the vaccination criteria.</u> <ul style="list-style-type: none"> Avoid all types of public transport. 	<u>Group 608 (Chronic Disease)/ traveller who did not meet the vaccination criteria.</u> <ul style="list-style-type: none"> Avoid all types of public transport. 	<u>Everyone</u> No public transport, if not required.	<u>Everyone</u> <ul style="list-style-type: none"> Refrain from going out. If necessary, use a private car.
• Entry into Thailand	Normal	<u>Group 608 (Chronic Disease) did not meet the vaccination criteria.</u> <ul style="list-style-type: none"> Refrain traveling abroad Enter the country: self-screening 	<u>Group 608 (Chronic Disease)/ traveller who did not meet the vaccination criteria.</u> <ul style="list-style-type: none"> Refrain from traveling abroad. <u>Normal people</u> avoids traveling abroad. Enter Country: Quarantine 	<u>Everyone</u> <ul style="list-style-type: none"> Refrain from traveling abroad. Enter Country: Quarantine 	<u>Everyone</u> <ul style="list-style-type: none"> Do not go abroad. Enter Country: Quarantine



กองด่านควบคุมโรคติดต่อระหว่างประเทศและกักกันโรค

Data collection and Data sharing in COVID-19 Situation



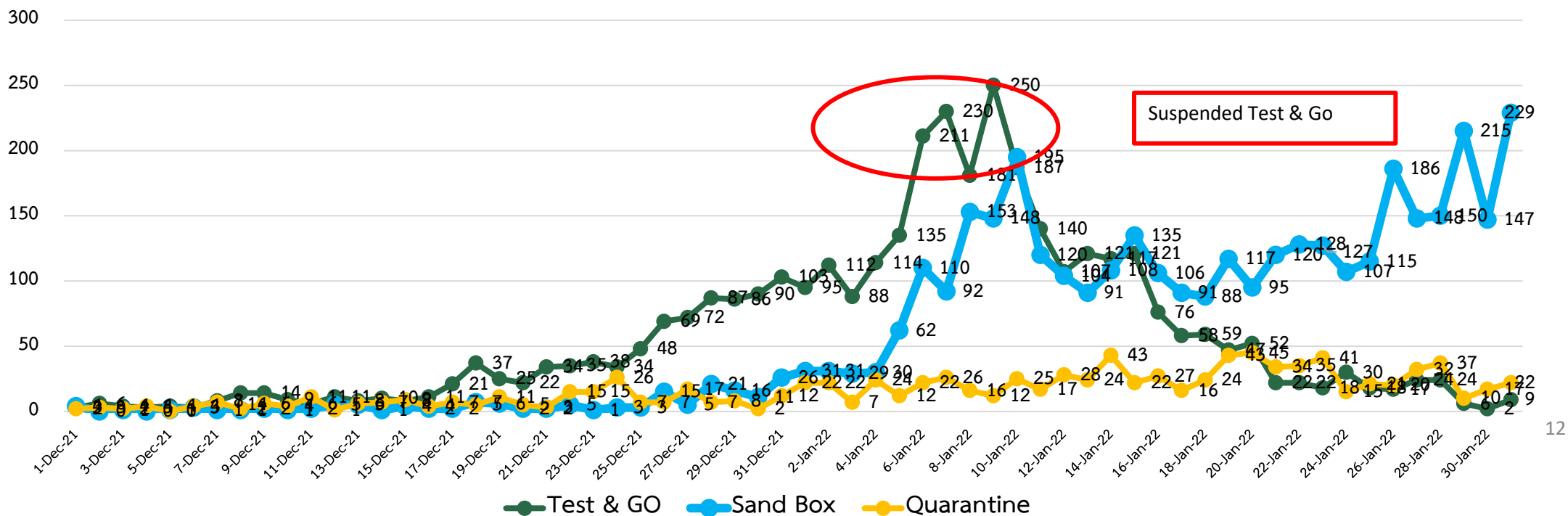


Example for risk assessment daily to CCSA by PoE Screening application

December 1, 2021 – January 31, 2022 (Total 8,362 cases)

December 2021	1,300 cases (290,617 persons = 0.45 %)
Test & Go	923 cases (240,552 persons = 0.38 %)
Sandbox	158 cases (42,867 persons = 0.37 %)
Quarantine	219 cases (7,198 persons = 3.04 %)

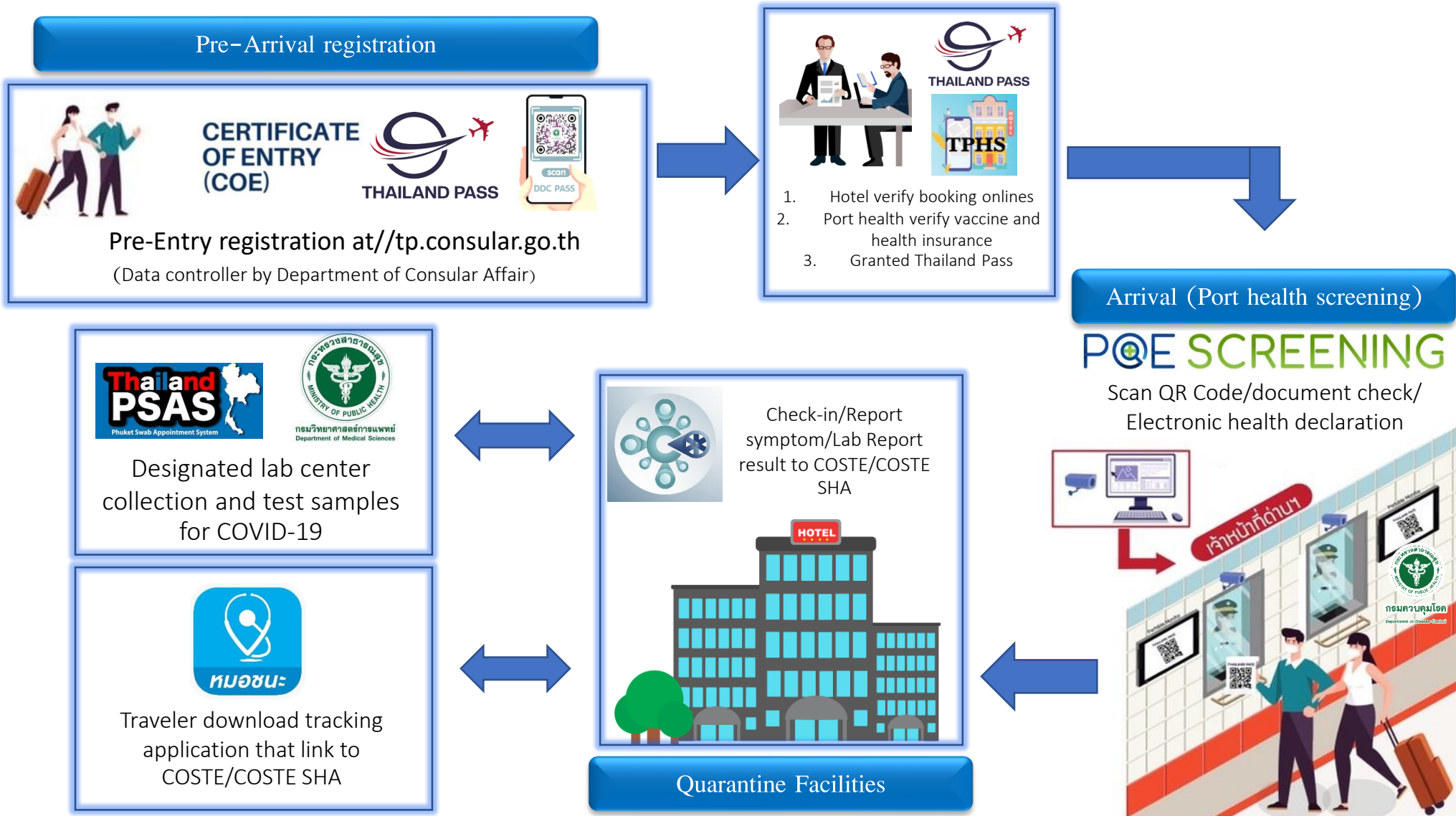
January 2022	7,062 cases (189,193 persons = 3.73 %)
Test & Go	2,693 cases (70,704 persons = 3.81 %)
Sandbox	3,608 cases (83,825 persons = 4.30 %)
Quarantine	761 cases (34,664 persons = 2.20 %)





กองด่านควบคุมโรคติดต่อ
ระหว่างประเทศและกักกันโรค

Pre-arrival registration with Thailand Pass during COVID-19





กองด่านควบคุมโรคติดต่อ
ระหว่างประเทศและกักกันโรค

Thailand's COVID-19 Quarantine facilities





กองด่านควบคุมโรคติดต่อระหว่างประเทศและกักกันโรค

The modification from Thailand Pass Post-COVID-19 to be Health Declaration form (Thai Health Pass & DDC Pass)

Pre-Arrival (Health Declaration Form)

Thai Health Pass
: Register for airport travelers arriving from dangerous infectious disease areas such as yellow fever, and fill in the yellow fever vaccination history before arrival.



DDC Pass
:Travelers and vehicle operators register information before entering Thailand or at DDC checkpoint by fill in the information once, it can be used 1 year for ground crossing border



Arrival (PoE screening)

POE SCREENING




Scan QR Code/Check traveler's documents/Vehicle inspection/Collect electronically T.8 and T.1 form.



Thai Health Pass




Normal entry



A traveler who sick while Traveling can report symptoms to the Thai Health Pass's website

High risk : To QC of DIPQ



For High risk contract (Quarantiner) /Check in /Report symptoms /Lab report to COSTE SHA

Using process of

POE SCREENING



1



Scan QR Code / Scan Passport /
Search Passport No. on PoE
Screening

2



Scan QR Code / Scan Passport / Search
Passport No. PoE Screening

3



Travelers screening/Vehicle Operator
and record data in the system



กองด่านควบคุมโรคติดต่อ
ระหว่างประเทศและกักกันโรค

Timeline : Measure for entry to Thailand in COVID-19 situation, 2020-2022

Measure	Start date	Quarantine period (day)	Quarantine facilities	Required Document(s)
Airport Entry Screening	4 April 2020	Q=14	SQ, ASQ, HQ, AHQ,OQ	COE, pre-departure RT-PCR (72 hrs.), health insurance, quarantine facilities confirmation
Ground crossing and Port Entry screening	18 April 2020	Q=14	LQ, ALQ, HQ ,AHQ, OQ	
Phuket Sandbox Entry Programme	1 July 2021	Q=7 UO=7	SHA Extra plus Hotel	COE/Thailand Pass, Vaccine Cert., Pre-departure RT-PCR (72 hrs.), health insurance, hotel facilities confirmation
Samui Plus Model Entry Programme	15 July 2021	Q=7 UO=7	SHA Extra plus Hotel	
Charming Chiang Mai Entry Programme	5 November 2021	Q=7 UO=7	SHA Extra plus Hotel	
Test and Go Entry Programme	1 November 2021	Q=1	ASQ, SHA Extra plus Hotel	
Free to go (No Quarantine)	1 May 2022	No Q	-	Thailand Pass, Vaccine Cert., RT-PCR

Q=Quarantine UO=Under Observation COE=Certificate of Entry (Issuing documents by Department of Consular Affairs)

Indicators: POINTS OF ENTRY AND BORDER HEALTH

Score

	PoE1. Core capacity requirements at all times for PoEs (airports, ports and ground crossings)	PoE2. Public health response at PoEs	PoE3. Risk-based approach to international travel-related measures ¹²⁶
No capacity – 1	A strategic risk assessment for the designation of individual PoEs as an integral part of a national risk assessment has not been completed	PoEs designated based on a strategic risk assessment are in the process of developing a PoE multisectoral public health emergency contingency plan ¹²³	National multisectoral mechanism to conduct risk-based approaches for strategic planning for international travel-related measures, including prevention, detection/investigation, response and recovery, is under development
Limited capacity – 2	Some designated PoEs are implementing some of the routine core capacities ¹²² based on a completed associated strategic risk assessment	Some designated PoEs have developed a PoE multisectoral public health emergency contingency plan for events caused by biological hazards	A national multisectoral strategy for international travel related measures is developed based on a risk-based approach with identified and assigned responsibilities
Developed capacity – 3	Some designated PoEs are implementing all the routine core capacities and these designated PoE are integrated into the national surveillance system for biological hazards/all hazards (e.g., event-based and early warning surveillance)	All designated PoEs have developed PoE multisectoral public health emergency contingency plans for events caused by biological hazards and are integrated into national surveillance systems and emergency response plans. ¹²⁴ Other non-designated PoEs are integrated into the national surveillance system ¹²⁵	Guidelines and SOPs are developed to facilitate the implementation of the strategy for international travel-related measures. Country has capacities/ arrangements are in place to calibrate and implement the national multisectoral strategy for international travel-related measures
Demonstrated capacity – 4	All designated PoEs are implementing routine core capacities with an all hazard and multisectoral approach integrated into the national surveillance system. Other non-designated PoEs are integrated into the national surveillance system	All designated PoEs have developed PoE multisectoral public health emergency contingency plans for events caused by all hazards and integrated into national emergency response plans. Contingency planning is conducted at some non-designated PoEs	Country has capacities/arrangements are in place to implement, adjust and adapt international travel related measures that are commensurate to the risks and to implement the national multisectoral strategy for international travel-related measures
Sustainable capacity – 5	Routine core capacities implemented at all designated PoEs are exercised, reviewed, evaluated, updated and actions are taken to improve capacity on a regular basis	All PoE public health emergency contingency plans for events caused by all hazards all designated PoEs are exercised, reviewed, evaluated and updated on a regular basis. Some non-designated PoEs have developed PoE multisectoral public health emergency contingency plans for events caused by all hazards and are integrated into national emergency response plans	Country has conducted at least one review, exercise or evaluation (either through an actual event or an exercise) at national and/or intermediate levels to test the national multisectoral strategy for international travel-related measures, and updated accordingly ¹²⁷

POE. Points of entry

POE.1 Score: 4
POE.2 Score: 4
POE.3 Score: 3

- Develop guidelines and SOPs and provide training to staff at ground crossings, as per the IHR (2005) Annex 1B
- Complement the existing indicator-based surveillance system at points of entry by adopting an event-based surveillance strategy that feeds into the national surveillance system
- Develop a set of guidelines, tailored specifically to points of entry, for routine activities including maintenance of food hygiene and potable water, waste management, and vector control



กองด่านควบคุมโรคติดต่อ
ระหว่างประเทศและกักกันโรค

Thank you for your kind attention

