



INDONESIA READY TO IMPLEMENT ATFM

Auditorium AirNav, 22 Oktober 2015

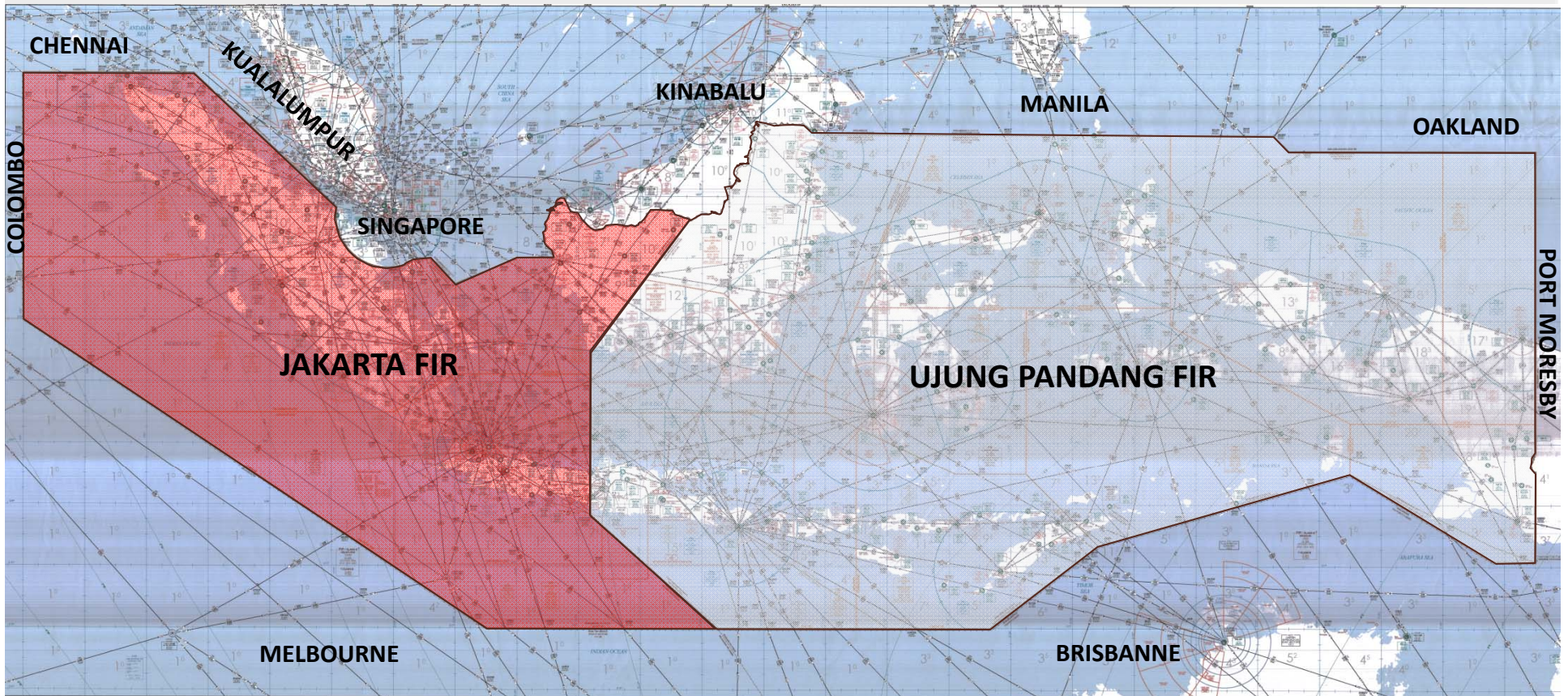
AirNav Indonesia

The Very Best for Safety



INDONESIAN AIRSPACE

2 FIR 2 ACC





INDONESIAN AIRSPACE

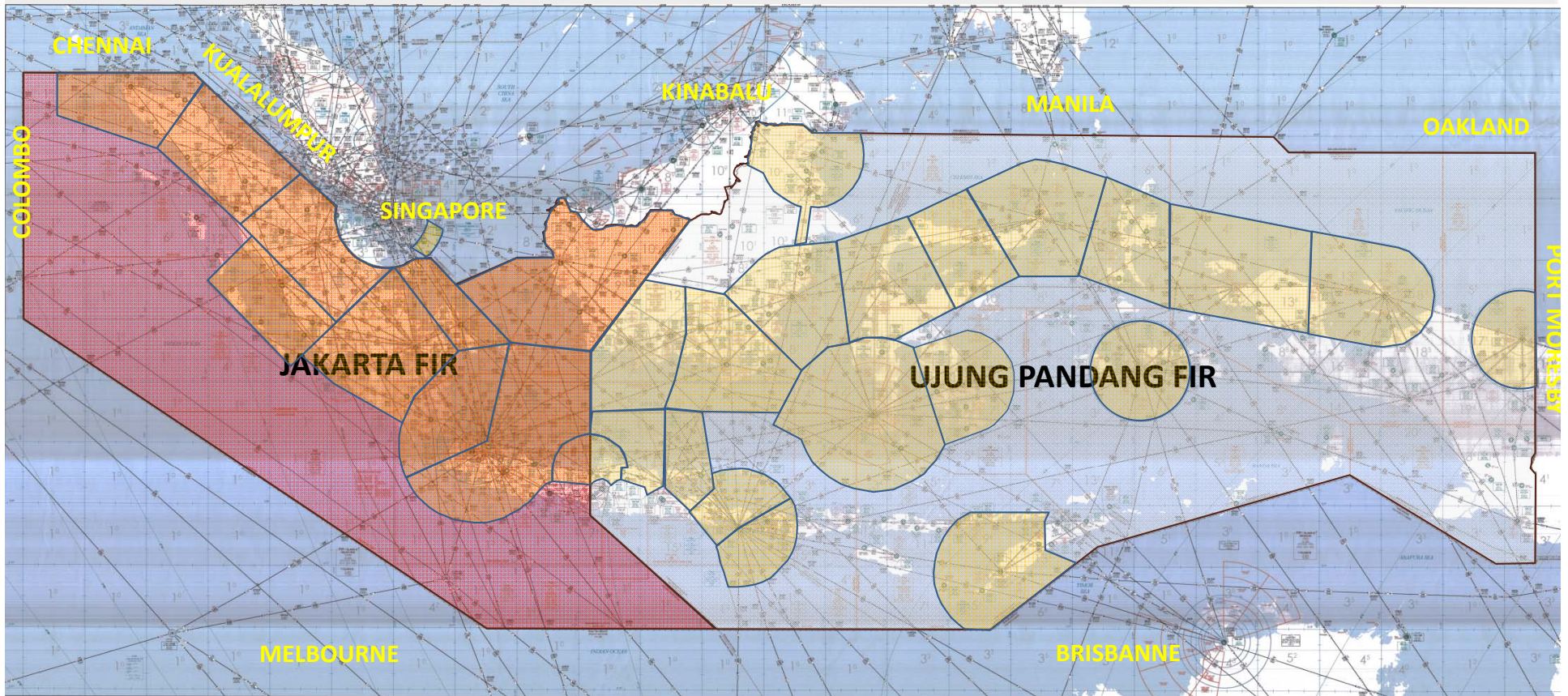
34 TMA, 14 FSS



237 Airports



59 Aircraft Opereter





INDONESIA AVIATION

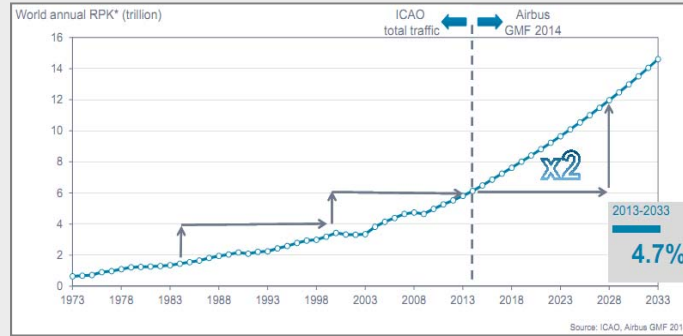
COUNTRY	PASSENGER VOLUME	ANNUAL %
Indonesia	92.534.902	20,4
Thailand	62.831.288	16,4
China	404.174.939	11,8
Singapore	42.438.276	7,6
Malaysia	51.821.210	7,5
Japan	148.450.196	4,9
India	97.677.318	4,4
Hongkong	44.399.060	3,9
Korea, republic of	62.166.163	1,2
Australia	81.983.309	0,6
Asia/Southwest Pacific	1.075.572.893	8,5

Top Asia/Pacific Passenger Countries 2013

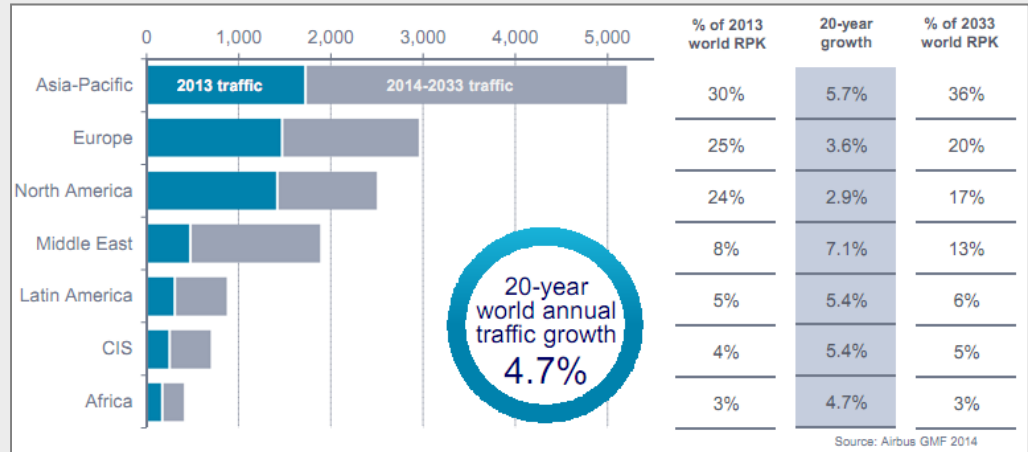




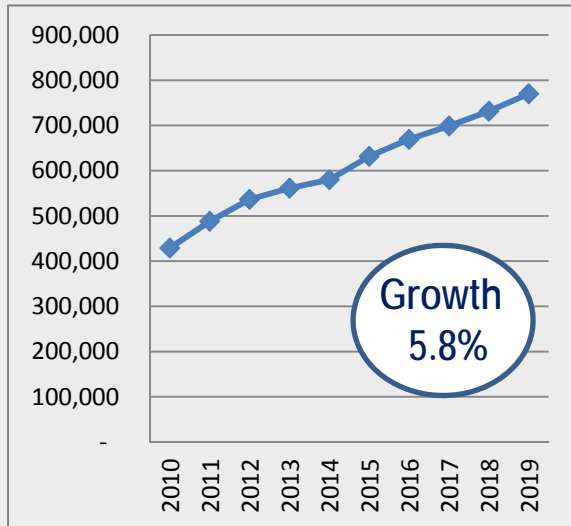
INDONESIA AVIATION



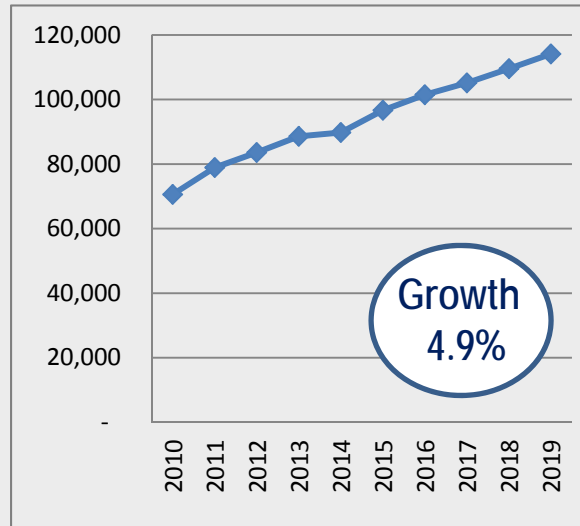
Global



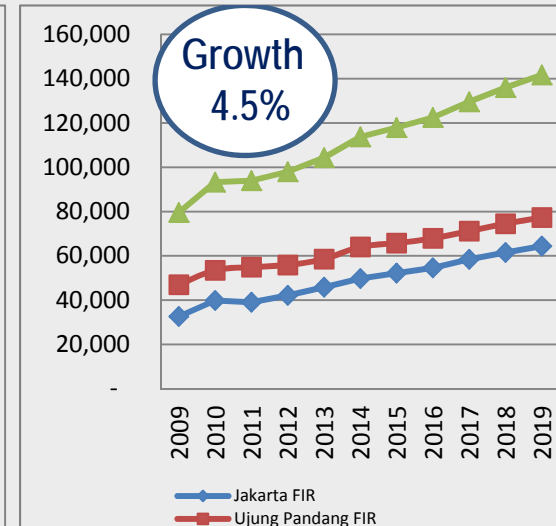
Asia Pasific



Domestik



Internasional



Overflying





INDONESIA AVIATION

- 78 % DOMESTIC FLIGHT
- 22 % INTERNATIONAL FLIGHT





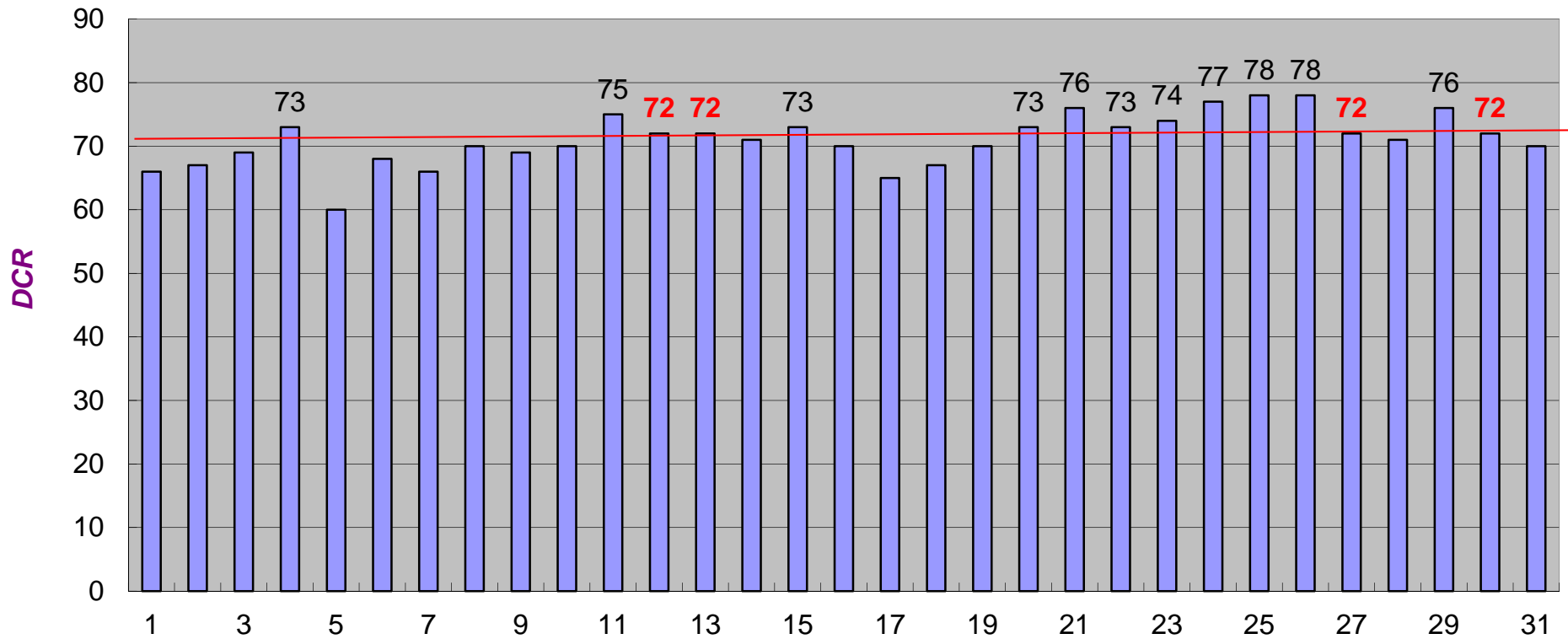
DECLARE AIRPORT CAPACITY

NO	AIRPORT	DECLARE AIRPORT CAPACITY	
		100%	80%
1.	Soekarno Hatta - Jakarta	90	72
2.	Kualanamu - Medan	33	26
3.	Sultan Aji Muhammad Sulaiman- Balikpapan	26	20
4.	Hasanuddin-Makassar	32	26
5.	Sentani - Jayapura	21	17
6.	Sultan Mahmud Badaruddin II - Palembang	27	21
7.	I Gusti Ngurah Rai - Denpasar	25	20
8.	Juanda - Surabaya	33	26





Traffic Movement Jakarta (CKG)

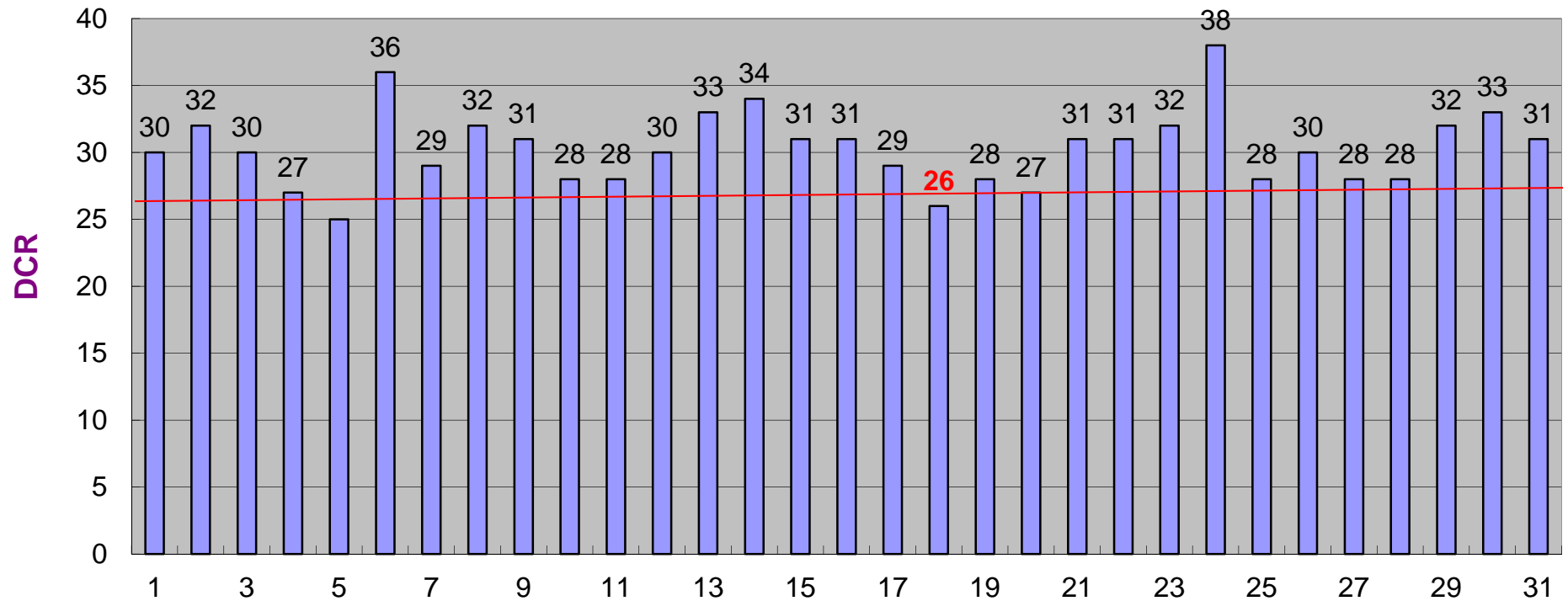


Juli 2015





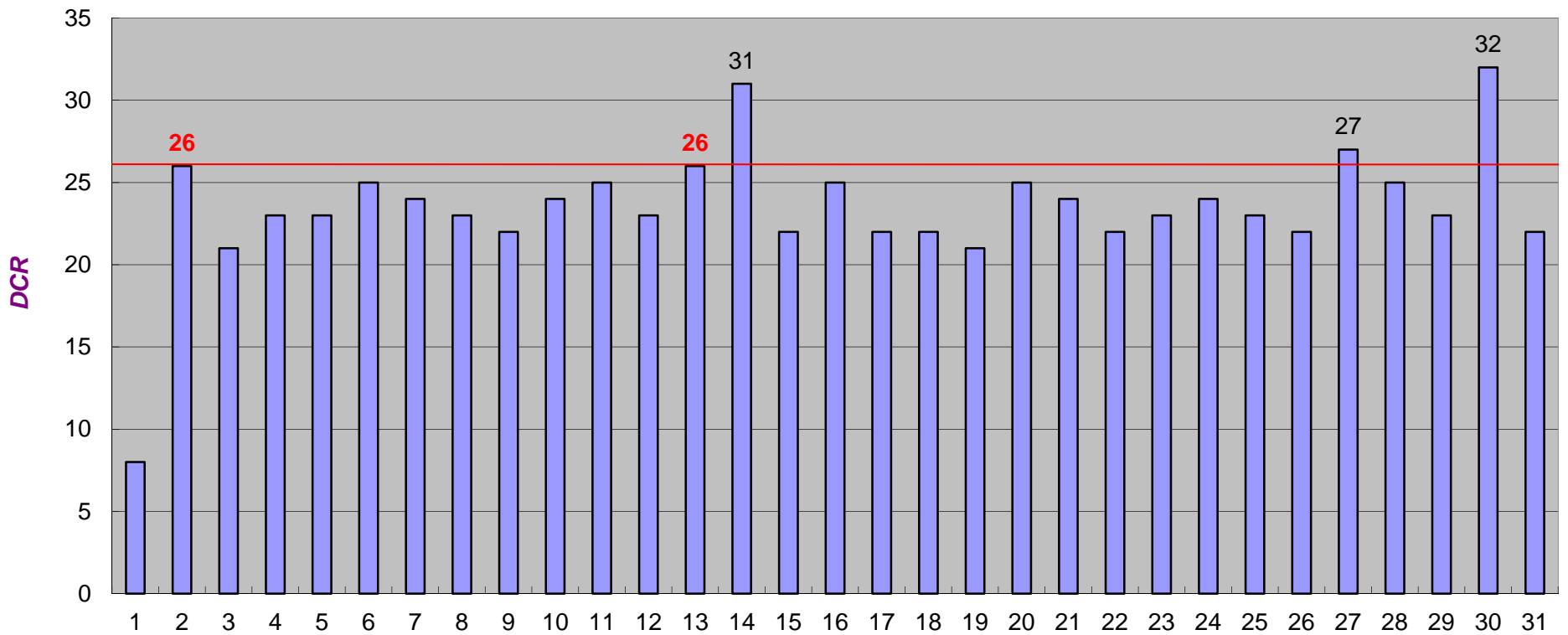
Traffic Movement Surabaya (SUB)



Juli 2015



Traffic Movement Makassar (MKS)

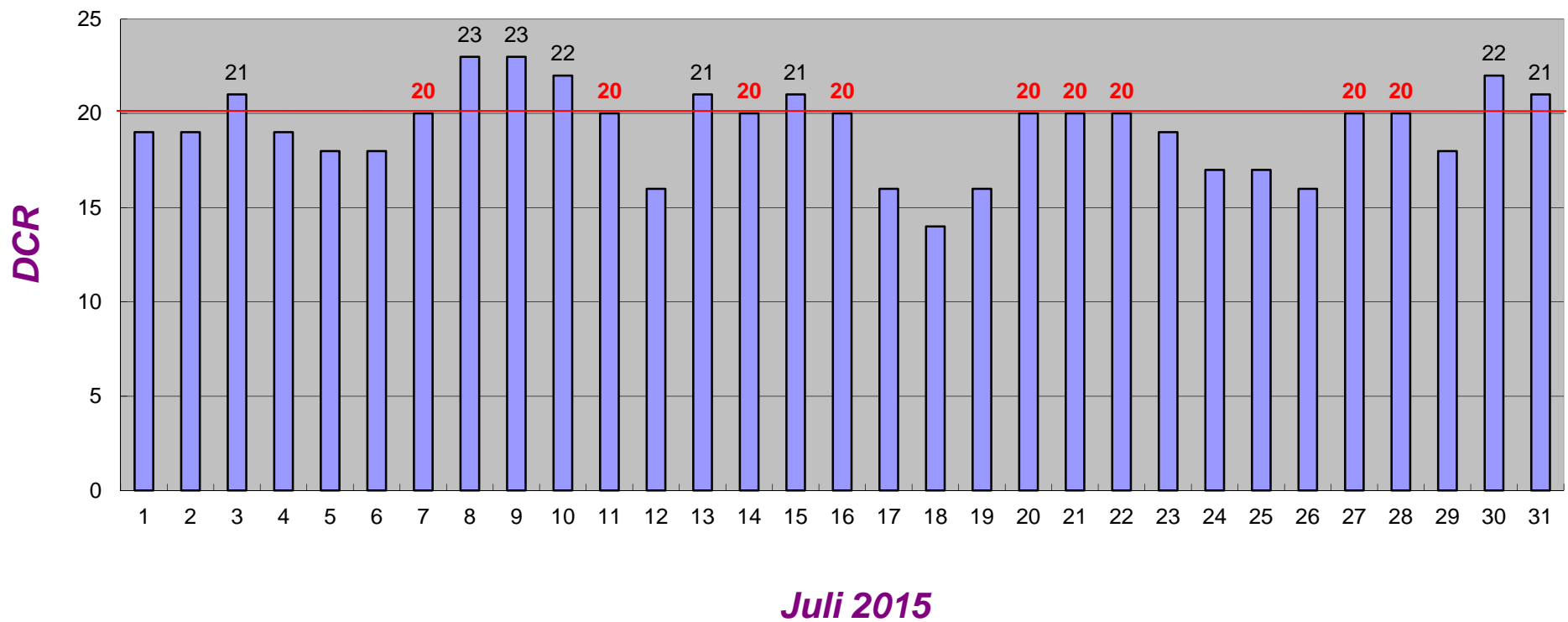


Juli 2015



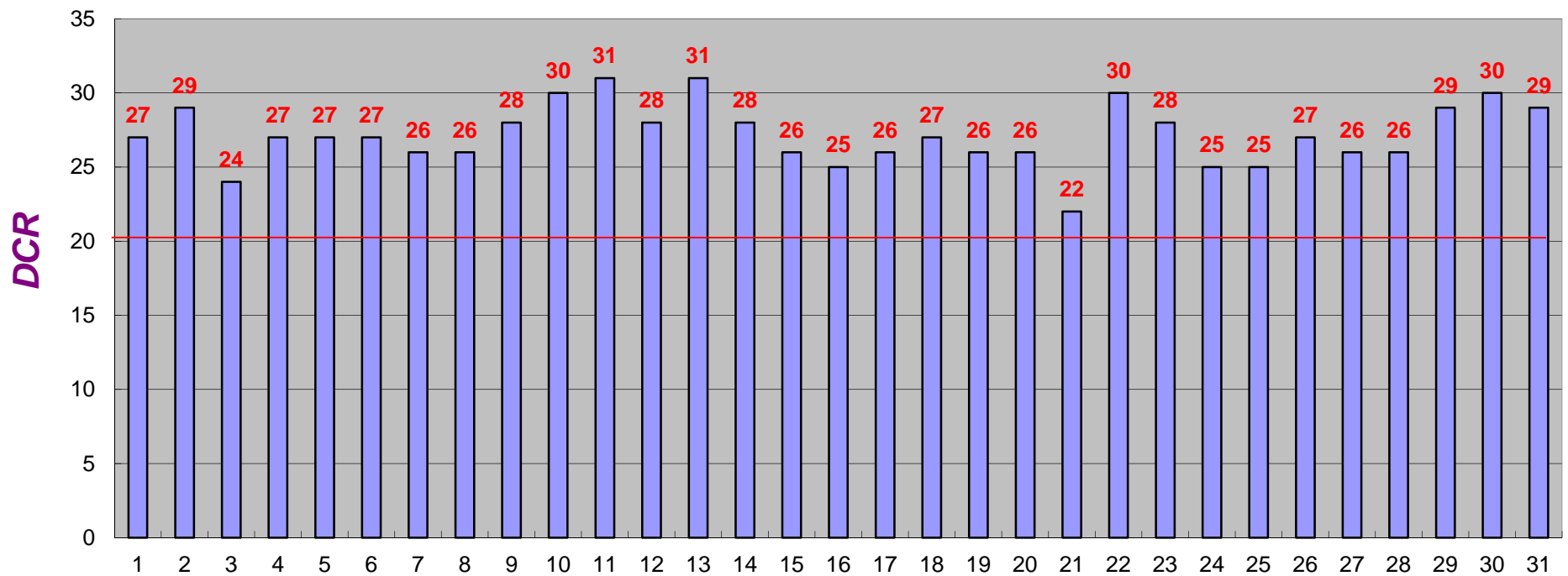


Traffic Movement Balikpapan (BPN)





Traffic Movement Bali (DPS)



Juli 2015





AIRLINE REPORT

➤ 2014

Garuda Indonesia Airline report spent out extra fuel budget **IDR 243 Billion** for delay (airborne holding and surface queing)

➤ Jan – July 2015

Extra fuel budget **IDR 76,57 Billion** for delay (airborne holding and surface queing)

- CGK : IDR 20,85 Billion
- SUB : IDR 5,15 Billion
- DPS : IDR 3,58 Billion
- Other Airport : IDR 46,99 Billion





STEP TO ATFM IMPLEMENTATION

➤ REGIONAL

a. Actively participate on ICAO Regional and Multi Nodal ATFM Operation Trial Meeting

b. Level 2 ATFM Node

Airport :

❖ WIII, WARR & WADD

Airlines :

❖ GIA, LNI & IAA





➤ NATIONAL (2015)

- a. Indonesia Slot Coordinator (IASM) manage airport slot on 8 coordinated airport and will expand to manage 32 coordinated airport on November 2015
- b. Workshop and socialization
 - 22 April 2015 ATFM Workshop with JICA
 - 27 – 29 April 2015 ATFM Workshop with DFS
 - 29 – 31 July 2015 Fundamental ATFM Workshop with ICAO RSO
 - 21 – 22 July 2015 Cross Border ATFM Workshop





- ATFM Socialization to ATFM stakeholder at 8 coordinated Aiport
- c. Indonesia ATFM/CDM Taskforce consist Airnav, Airport, Airline, Military, Meteorology and regulator.
output : create all thing that needed for ATFM implementation (draft policy, draft regulation, draft new procedure). Meeting monthly
ATFM will be implemented at 8 coordinated airport
- d. AirNav prepare to establish centralize FPL in 2016
- e. AirNav Cooperate with JICA for improvement of aviation safety and efficiency (one of project is ATFM Operational Concept in Indonesia)





- f. AirNav & AP II Cooperate with NATS UK for improvement Runway Capacity to 86 mov/hour
- g. AirNav, Airport and Airline have signed Memorandum of Comitment to support ATFM implementation in Indonesia



2016

- a. Establishment Centralize FPL
- b. Cooperate with ICAO RSO
- c. Establishment ATFM Unit at 8 coordinated airport
- d. ATFM Personel Training
- e. Upgrade to level 3 ATFM Node
- f. National ATFM implementation





MEMORANDUM OF COMMITMENT



KOMITMENT BERSAMA

IMPLEMENTASI AIR TRAFFIC FLOW MANAGEMENT/ COLLABORATED DECISION MAKING (ATFM/CDM) DI INDONESIA

Kami komunitas penerbangan Indonesia memahami pentingnya implementasi ATFM untuk meningkatkan keselamatan, keteraturan, dan efisiensi penerbangan. Untuk mendukung keberhasilan Implementasi ATFM di Indonesia, perlu dilaksanakan suatu kolaborasi dalam pengambilan keputusan (Collaborated Decision Making/CDM).

Oleh karena itu, kami selaku pemangku kepentingan penerbangan nasional berkomitmen untuk :

1. Pentingnya implementasi ATFM untuk mendukung keberhasilan penerbangan nasional secara umum
2. Berpartisipasi aktif dalam kolaborasi implementasi ATFM/CDM
3. Bekerjasama untuk kemanfaatan bersama
4. Saling berbagi informasi yang diperlukan oleh semua stakeholder
5. Mendukung pola kerja dan budaya kerja operasional yang bekerja dalam konteks *teamwork*

Jakarta, Juli 2015

Direktur Utama
PT. Angkasa Pura I (Persero)


SULISTYWO WIMBO S

Direktur Utama
PT. Angkasa Pura II (Persero)


BUDI KARYA SUMADI

Direktur Utama
Perum LPPNRI


BAMBANG TJAHJONO



- a. AirNav, Airline and Airport commit to support implementation ATFM/CDM in Indonesia.
- b. AirNav, Airline and Airport actively participate to collaborate in implementation ATFM
- c. Cooperate for mutual benefit
- d. Conduct information sharing





Terima Kasih

