



International Civil Aviation Organization

**THE TENTH MEETING OF ASIA/PACIFIC OPMET MANAGEMENT
TASK FORCE (OPMET/M TF/10)**

Bangkok, Thailand, 17 – 19 April 2012

Agenda Item 2

Review:

**a) Current status of OPMET exchange in the Region - Status of WIFS
Implementation**

WIFS IMPLEMENTATION

(Presented by Singapore)

SUMMARY

This information paper provides the WIFS
implementation status in Singapore.

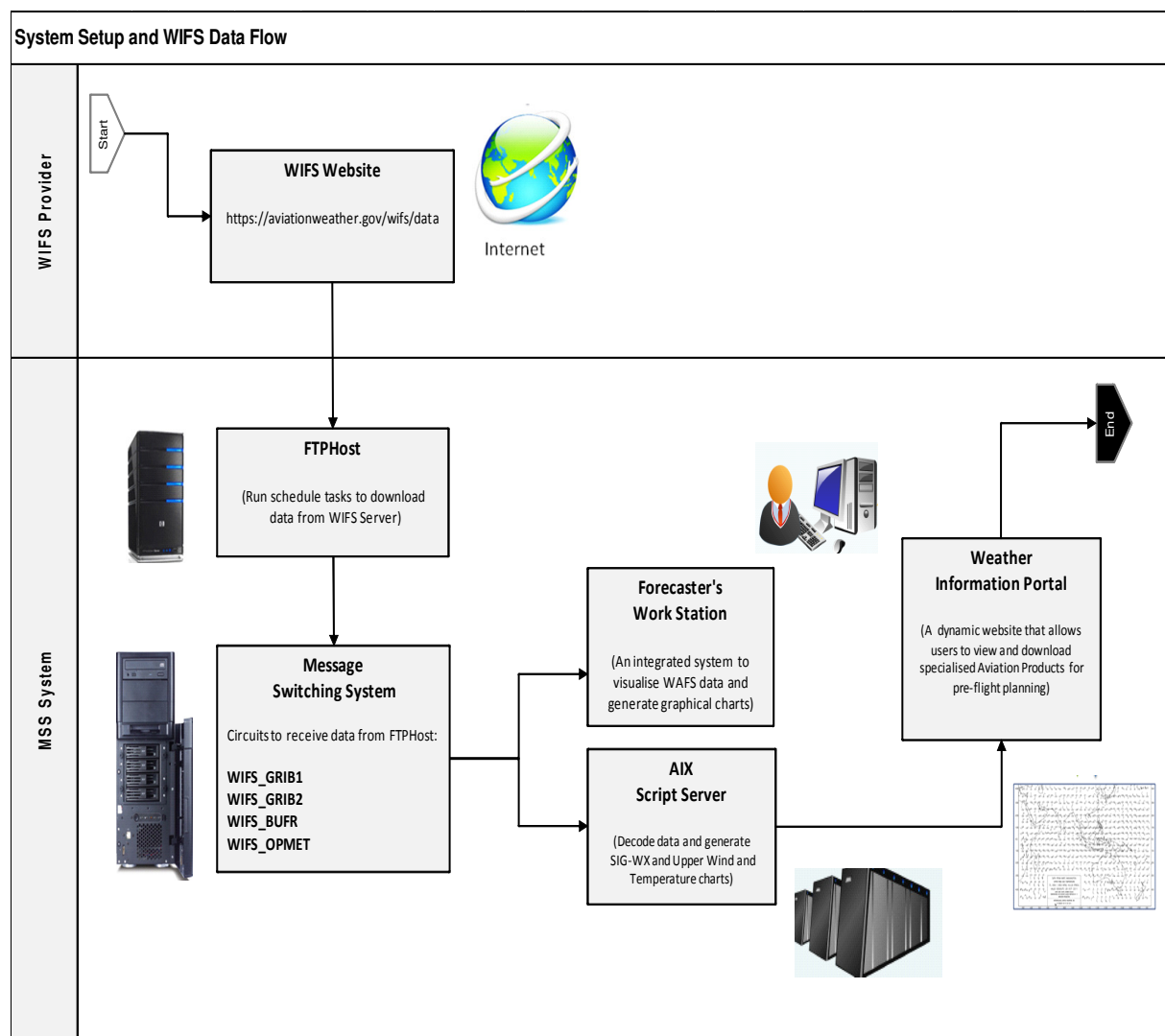
1. INTRODUCTION

1.1 The WAFS Internet File Service (WIFS) is now operationally available for use either as a primary means for the accessing of WAFS-Washington's products or as a back-up to the International Satellite Communication System-Generation 2 (ISCS-G2). The cut-off date for the ISCS-G2 transmission will be scheduled for end June 2012 and States are encouraged to migrate to WIFS by Mar 2012.

1.2 The downloading and testing of data from WIFS at Singapore has been in progress since July 2010. As of 22 Feb 0200UTC, WAFS data (OPMET, GRIB1 and BUFR SIGWX) from WIFS was ingested into the Pilot Message Switching System for operational use. The data reception from ISCS-G2 was routed to the standby Comm Server and as a backup to WIFS till 30 Jun.

2. WIFS IMPLEMENTATION

2.1 System setup and Data Flow

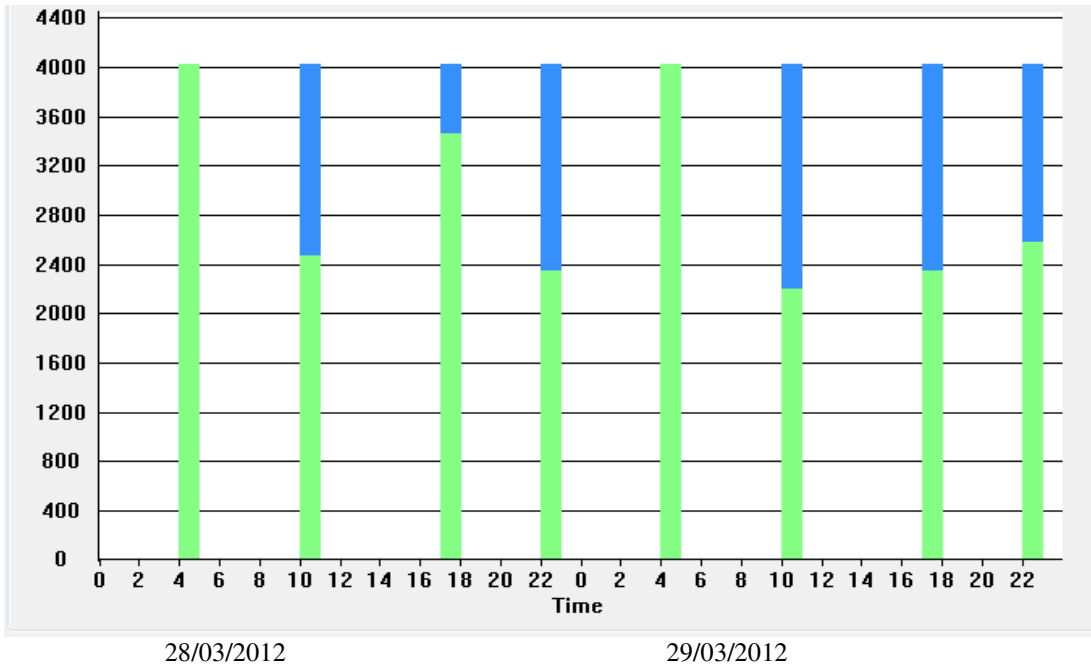


2.2 Data Files downloaded from WIFS

2.2.1 The following screenshots provide an overview of number of files downloaded from WIFS.

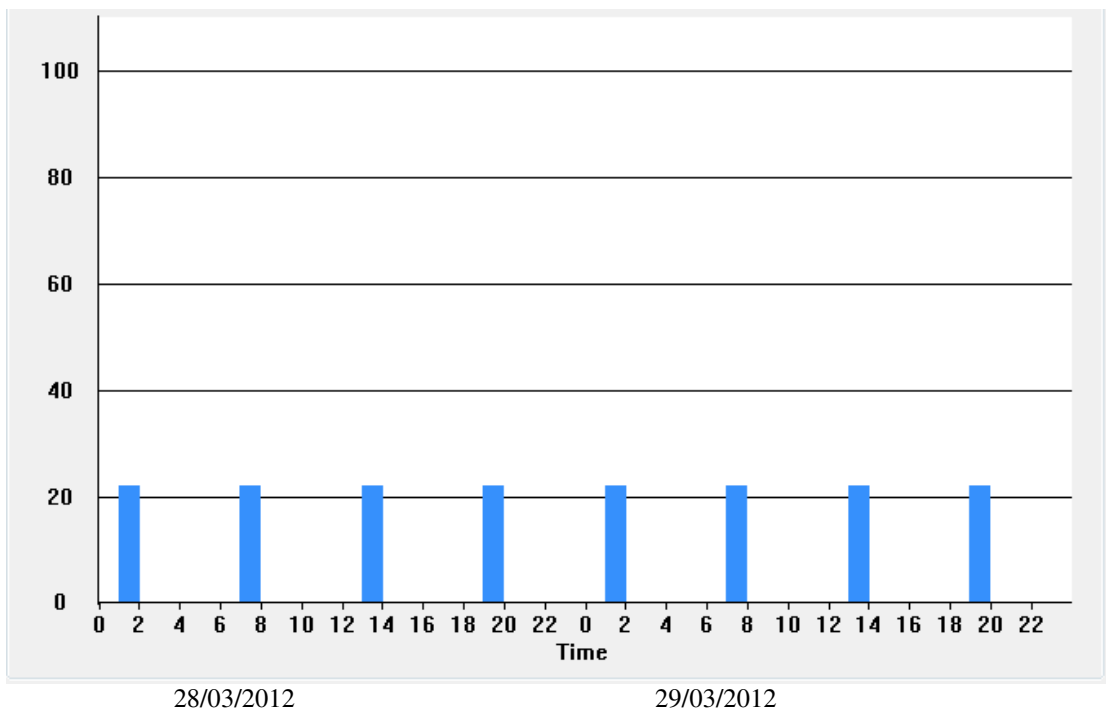
Traffic in Number of GRIB1 Messages received from WIFS-GRIB

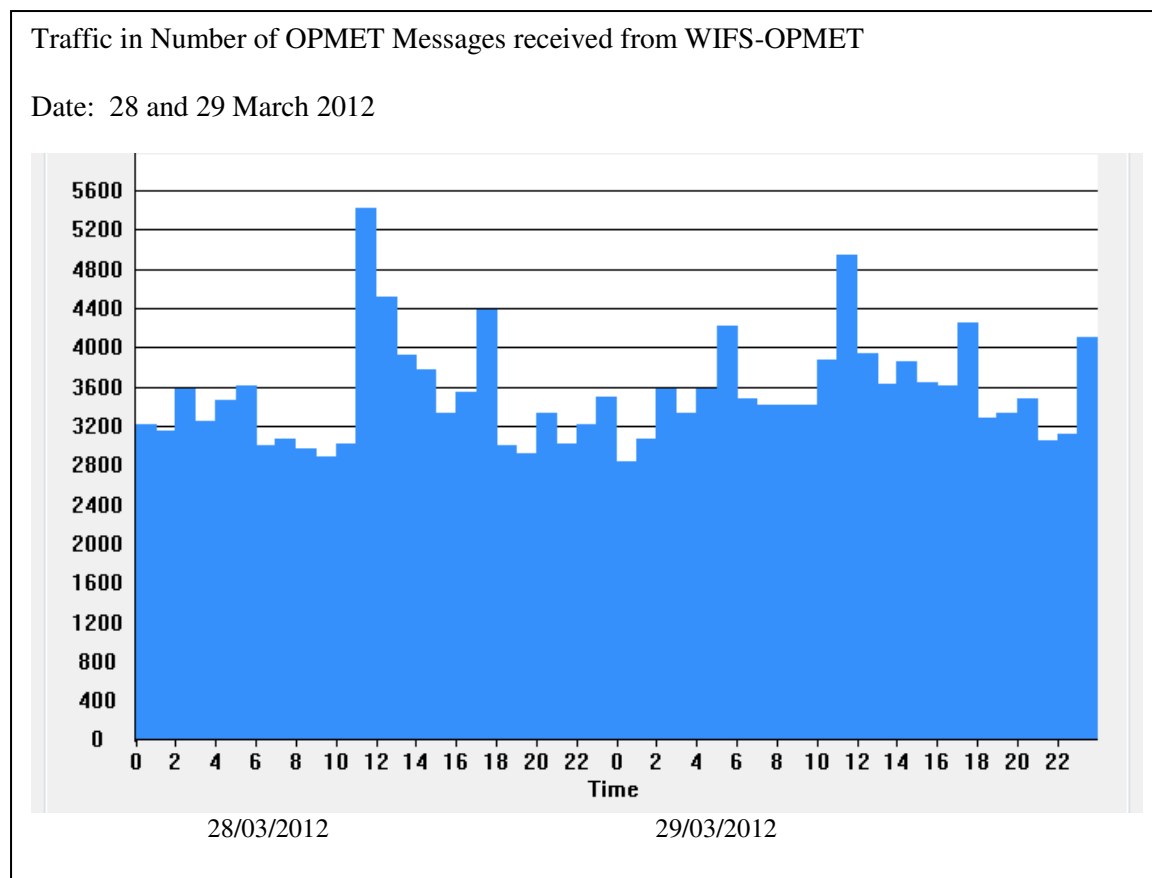
Date: 28 and 29 March 2012



Traffic in Number of BUFR Messages received from WIFS-BUFR

Date: 28 and 29 March 2012





2.3 Time to download files from WIFS

2.3.1 The following table provides number of files/bulletins, download time and download rate for each of the WIFS folders, based on bandwidth of 256 kbps over a period of 24 hours (Statistics was collated from 16 to 30 March 12).

WIFS Folder		No of Files Downloaded	No of Bulletins in each file	Download Time in mins	Download Rate in kbps	Average File Size (in mb)	TOTAL No of Files Downloaded per day	TOTAL No of Bulletins Downloaded per day	TOTAL File Size (in mb)
GRIB1	00 hour	6	672	11	255.3	20.0	24	16,128	79.9
	06 hour	6	672	11	257.2	19.9			
	12 hour	6	672	11	256.1	20.0			
	18 hour	6	672	11	260.6	20.0			
GRIB2	00 hour	11	61	15	212.5	23.3	44	2,684	93.7
	06 hour	11	61	15	209.3	23.4			
	12 hour	11	61	16	209.3	23.5			
	18 hour	11	61	16	206.6	23.5			
WIFS Folder		No of Files Downloaded	No of Bulletins received	Download Time in mins	Download Rate in kbps	Average File Size (in kb)	TOTAL No of Files Downloaded per day	TOTAL No of Bulletins Downloaded per day	TOTAL File Size (in kb)
BUFR	00 hour	22	22	3	1.6	39.6	88	88	158.0
	06 hour	22	22	3	1.6	39.8			
	12 hour	22	22	3	1.6	39.5			
	18 hour	22	22	3	1.6	39.8			
WIFS Folder		No of Files Downloaded per mins	Average No of Bulletins in each file	Download Time in secs	Download Rate in kbps (standard download time of 2 sec)	Average File Size (in kb)	TOTAL No of Files Downloaded per day	TOTAL No of Bulletins per day	TOTAL File Size (in mb)
OPMET-MINUTE	every minute	1	40	< 10 secs	50 -135	12.0	1440	55,623	16.0

2.3.2 The connection with the WIFS using **wget** protocol (*Wget is a computer program that retrieves content from web servers Its features include recursive download, conversion of links for offline viewing of local HTML, support for proxies*) is good and reliable. WAFS data are downloaded on time to meet the operational requirements.

3. ACTION BY THE MEETING

3.1 The meeting is invited to note the WIFS implementation progress in Singapore.
