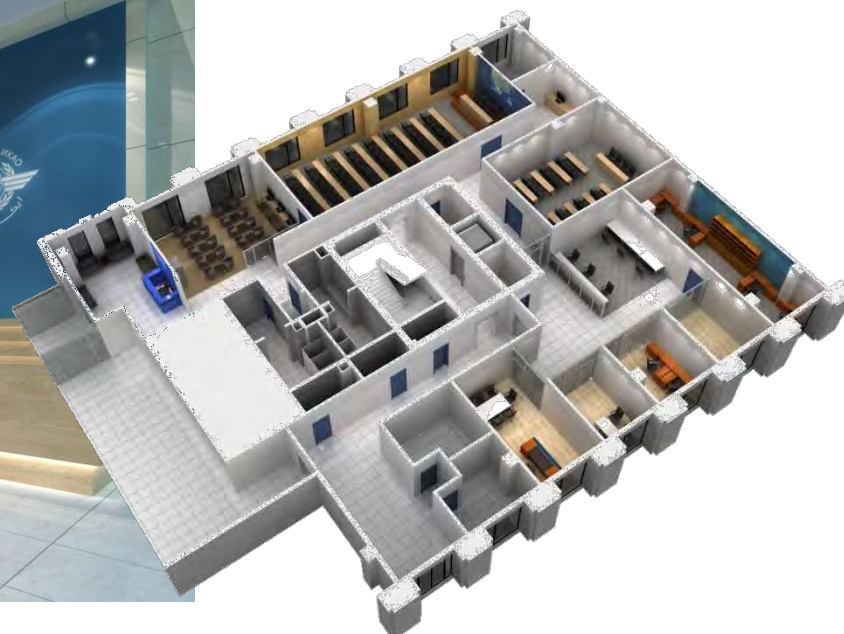
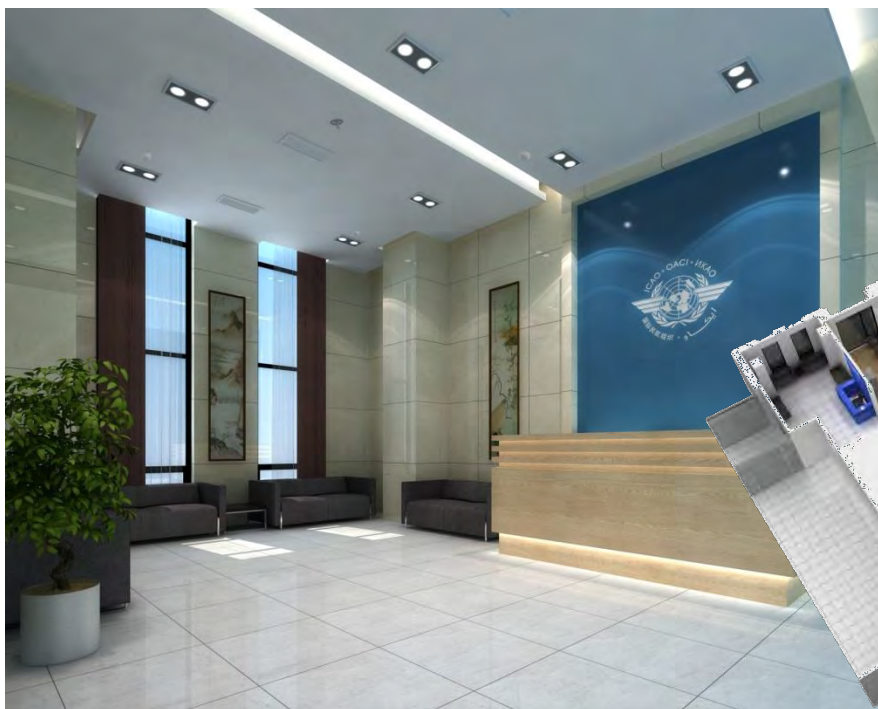




INTERNATIONAL CIVIL AVIATION ORGANIZATION

A United Nations Specialized Agency

Strategic Way Forward: ICAO APAC Regional Sub-Office (RSO)





C

国际民航组织
亚太区分办事处
ICAO
Asia And Pacific
Regional Sub-Office

09

Strategic Framework for the Regional Sub-Office (RSO)



A. Improve **Safety and Efficiency of Flight Operations** through Innovative Procedures.

B. Enhance **Airspace Capacity and Efficiency** to Accommodate Asian Aviation Growth

C. Optimize **ATM Operations** via Collaborative Management of Traffic Flow



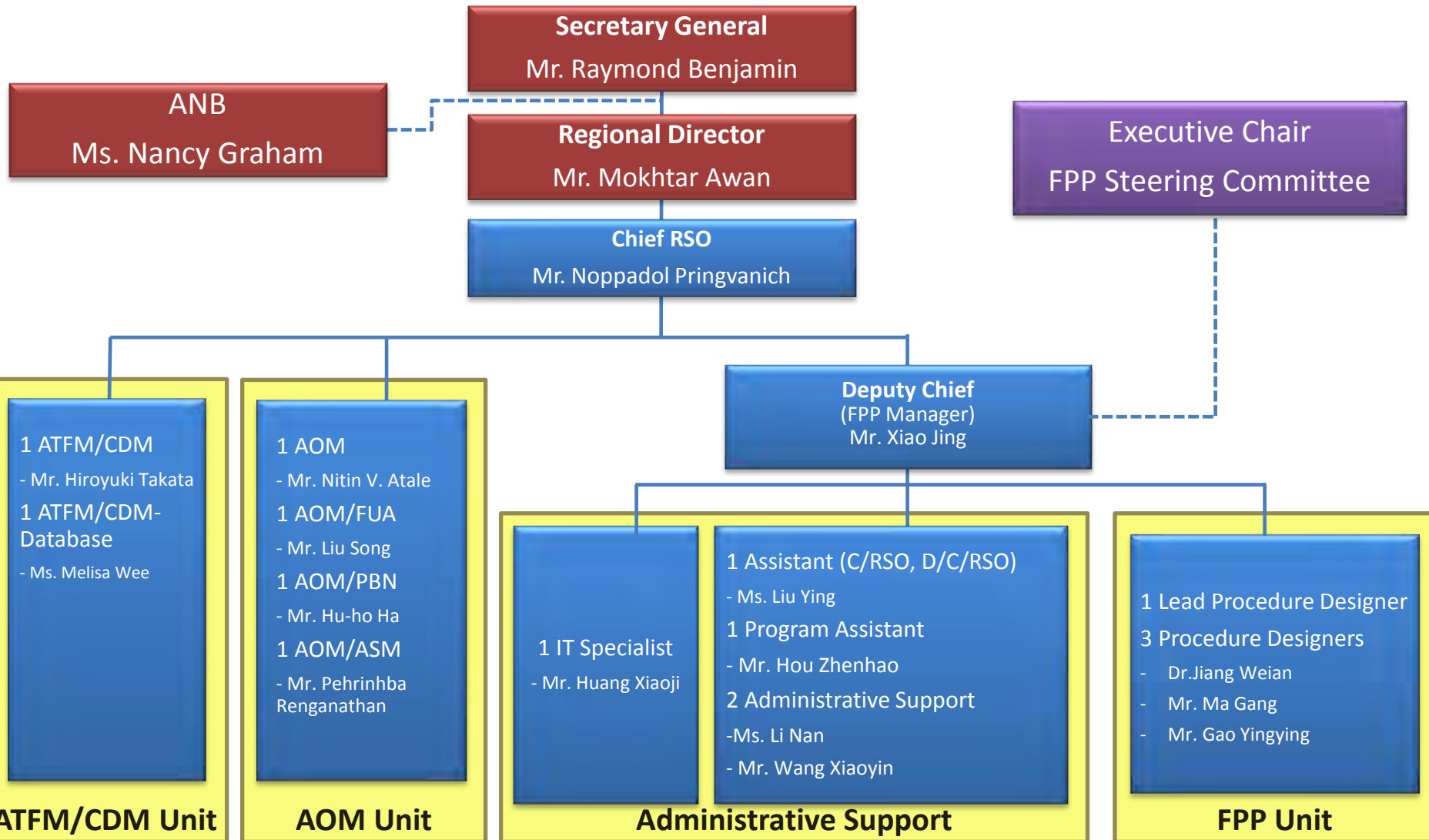
In coordination with ANB and APAC Regional Office

D. Ensure **Continuous Improvement of Organizational Performances** by Proper Managements of Quality, Work Plans, Resources and Developments of Team-members' Capacity



Consistent with ICAO culture and practices

Work Structure of the Regional Sub-Office (RSO)

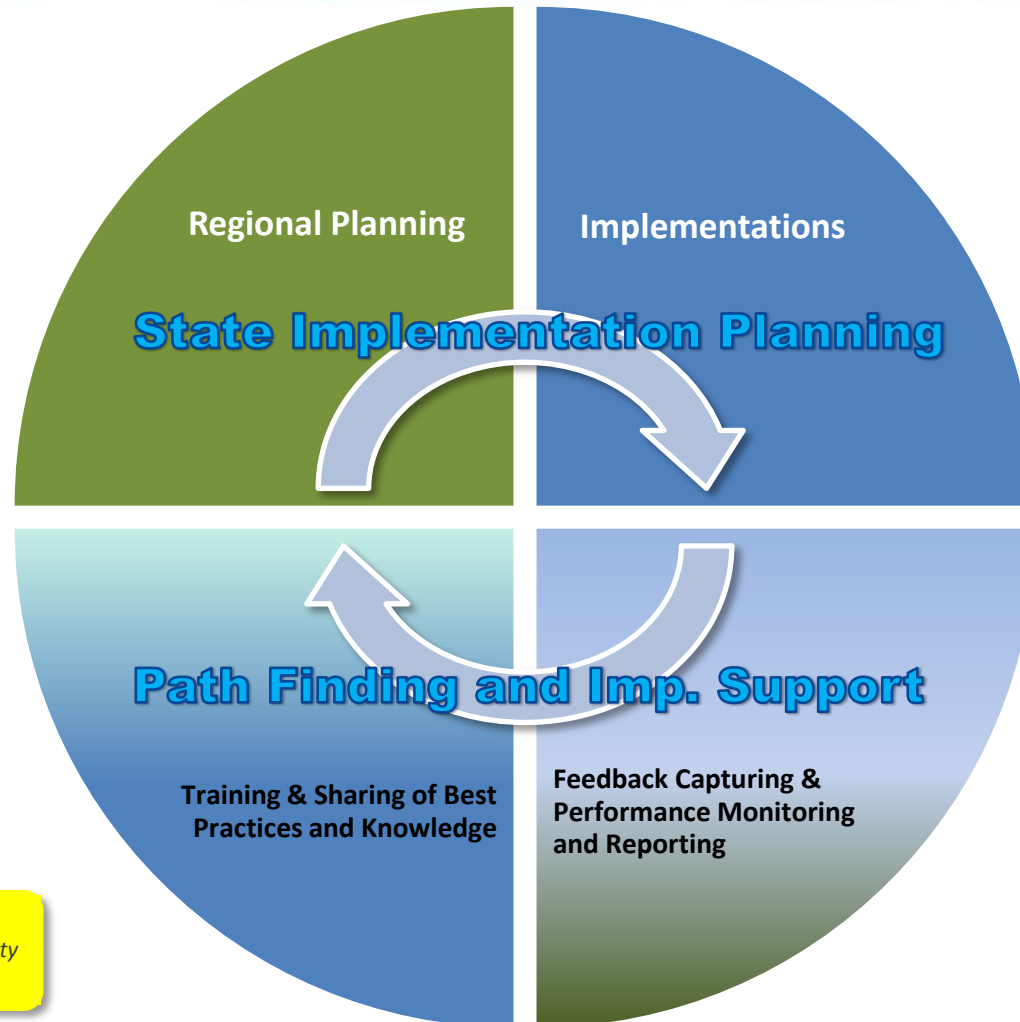


FPP Integration into the RSO



- **Endorsed by the FPP Steering Committee**
- **Benefits of Integration**
 - Strategic Alignment
 - Sharing of Professional Expertise
 - Sharing of Training and Office Facilities
- **FPP Steering Committee also endorsed Work Plan, Budget and Phase 2 – Strategy Forward as followings:**
 - Enhance Internal Process
 - Expand Value Creation
 - Increase Public Visibility

Coordination Structure between APAC RO and RSO



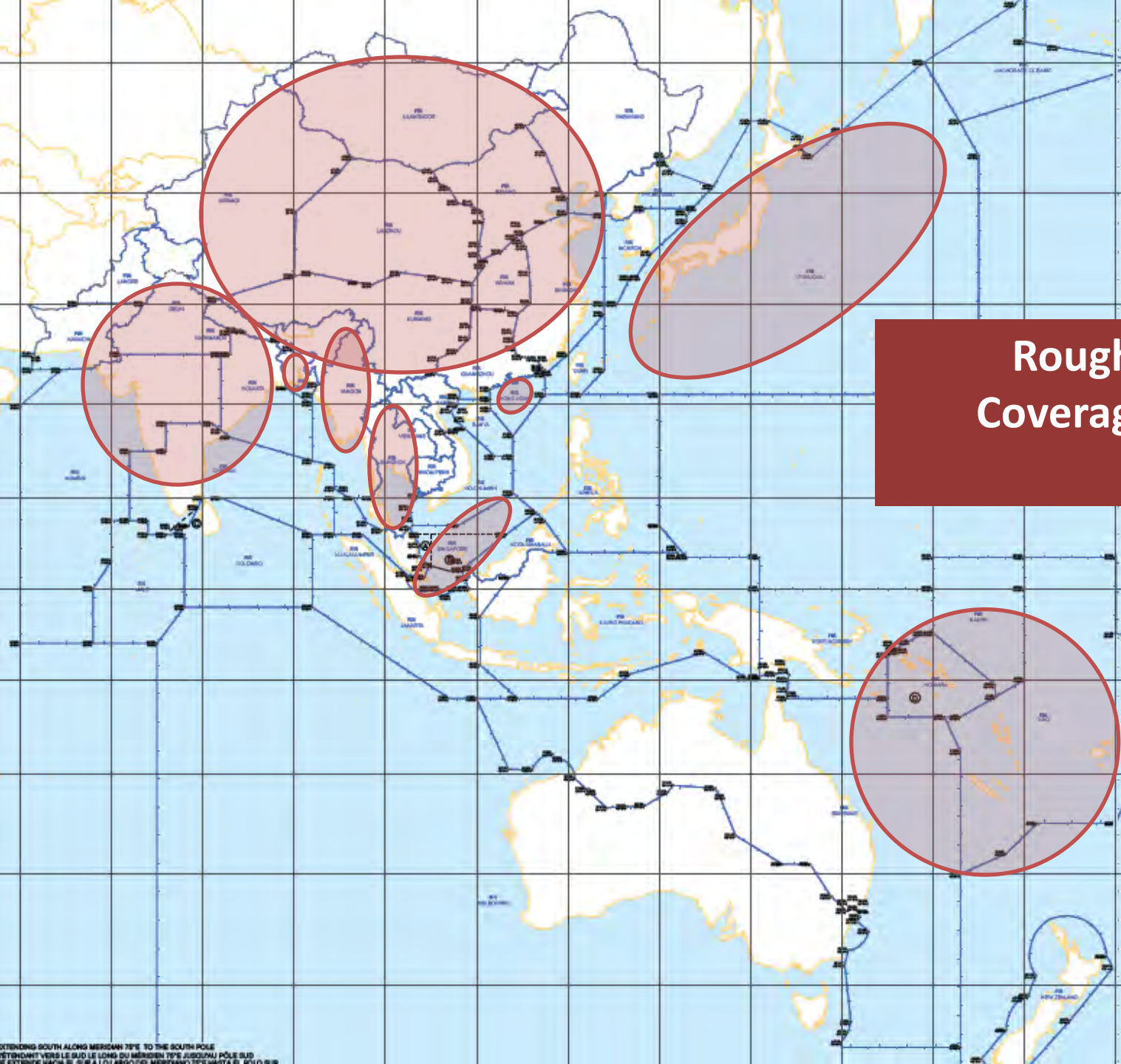
RO as Main Player
RSO as Supporting Player

RO as Supporting Player
RSO as Main Player

Note: Performance Monitoring and Reporting will be under the responsibility of the RO.

Kick-off RSO Projects

- PBN APV Approaches for DAC Airport, Bangladesh
- PBN TMA for Myanmar
- PBN for Pacific Island States
- Airspace Optimization in East Asia
- Workshop on CDM/ATFM



Rough Geographical Coverage of Proposed RSO Projects

EXTENDING SOUTH ALONG MERIDIAN 75°E TO THE SOUTH POLE
ÉTENDANT VERS LE SUD LE LONG DU MÉRIDIEN 75°E JUSQU'AU PÔLE SUD
SE EXTIENDE HACIA EL SUR A LO LARGO DEL MERIDIANO 75°E HASTA EL POLO SUR

Strategy D: Ensure Continuous Improvement of Organizational Performances



- **Deployment of RSO Facility and Equipment**
 - Office and Conference Facilities
 - ICT Infrastructure
 - ATM Specialized Equipment
- **RSO Team Members**
 - Professional Staff
 - Administrative Staff
 - FPP Staff
- **Agreed Work Plans, Success Criteria and Evaluation Methodology**

RSO Facilities



RSO Team Members





North American
Central American
and Caribbean
(NACC) Office
Mexico City

South American
(SAM) Office
Lima

**ICAO
Headquarters
Montreal**

Western and
Central African
(WACAF) Office
Dakar

European and
North Atlantic
(EUR/NAT) Office
Paris

Middle East
(MID) Office
Cairo

Eastern and
Southern African
(ESAF) Office
Nairobi

Asia and Pacific
(APAC) Office
Bangkok

Thank You

A world map is shown in a light blue color. Eight colored dots (one orange for Montreal, seven blue for other offices) are placed on the map, with thin lines connecting them to their respective text labels. A large, rounded rectangular box with a grey-to-white gradient background and a dark blue border is centered over the map, containing the text 'Thank You' in a bold, dark blue font.