

A light beige silhouette map of Japan is positioned in the background, showing the four main islands and surrounding waters.

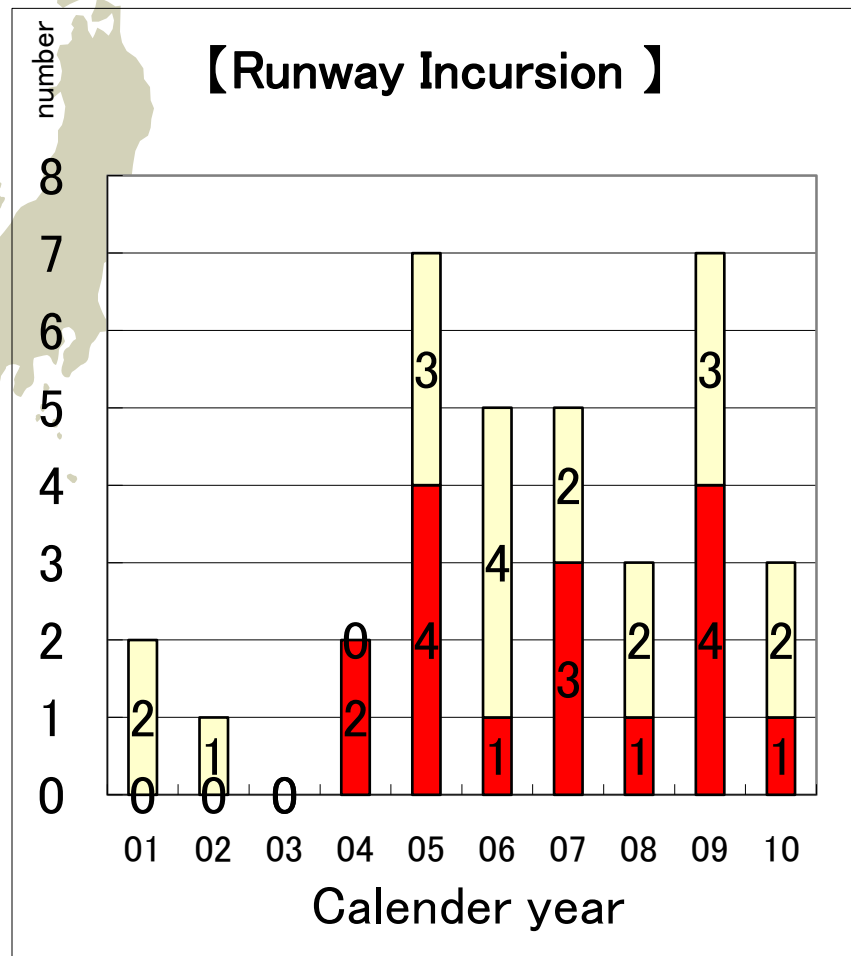
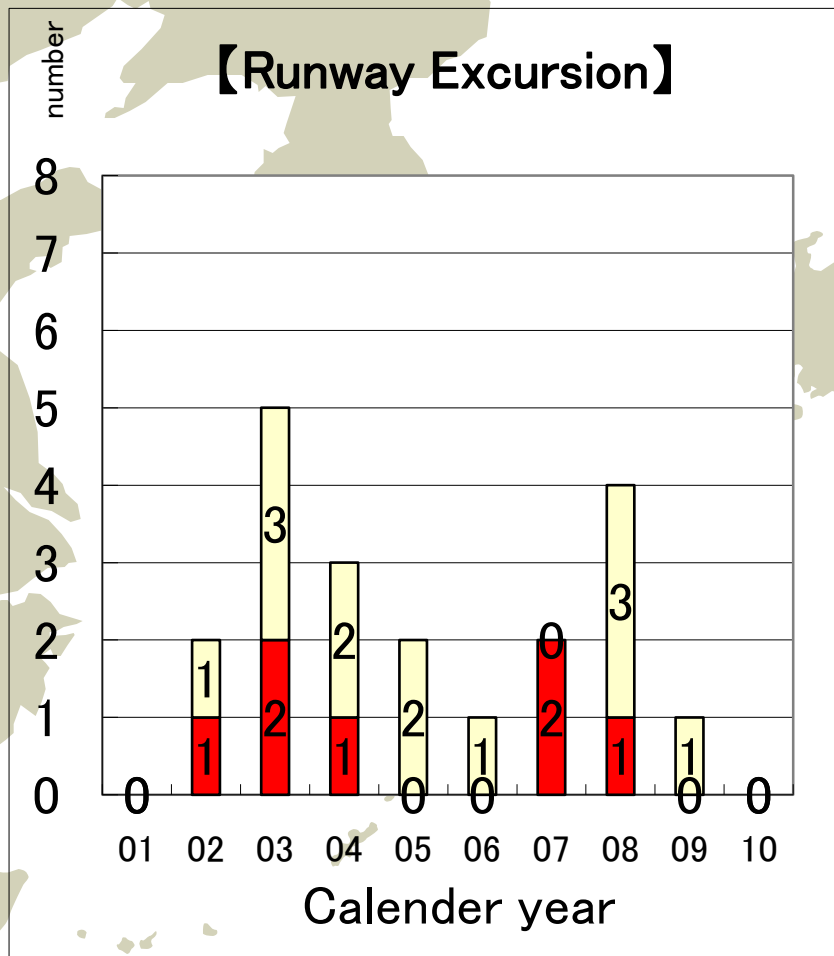
Runway Safety in Japan

Katsuyuki Nakatsubo

Electronic Navigation Research Institute, Japan

Status of Runway Safety

Serious incident and Minor incident



 : Serious incident

 : Minor incident

Measures Taken(1) –Runway Excursion –



Risk: Inappropriate operation by pilots

Measure: Revision of Operating procedures, Crew Training such as SIM training on turbulent weather (LOFT)



Risk: High cost of expanding new RESA site due to mountainous geography

Measure: Consideration of alternative mitigating measures for these airports instead of expansion of RESA



Risk: Runway condition

Measure: Maintain appropriate transverse slopes, grooving, Periodic check and removal of FOD

Risk: Lack of information on rainy/icy ground condition

Measures: Checking/Reporting friction coefficient and ground condition

Measures Taken(2) –Runway Incursion –



Risk: Miscommunication between ATC and pilots

Measure: Read-back rules, Reminder for similar call sign, Sharing common recognition among all ATC staffs and pilots

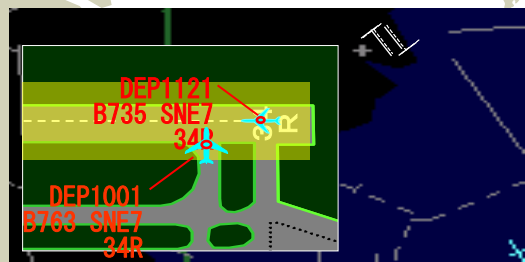
Risk: Lack of appropriate training for ATC/pilots

Measure: Revision of Operating procedures, Crew Training (Application of LOSA/FOQA), Simulator training for ATC

Risk: Lack of appropriate visual aids and surveillance

Measure: Improvement of visual aids, Improvement of ATC support functions through enhanced ground surveillance such as Multilateration,

Other: Sharing of safety information among airport management and flight operators in each airport



- **Efforts from administration side**

- Implementation of State Safety Programme (SSP)

- Streamlining administrative organization for multidisciplinary/holistic approach for effective SMS including runway safety

Activities for the Future

- **Introduction/Improvement of various tools/aids such as RWSL**
 - Standardization to avoid confusion
- **R&D activities including those on Human Factor related issues**
 - A/G-G/G communications, training of ATC/Pilot, fatigue etc.
- **Sharing of runway safety data**
 - Measures based on experiences of other states
 - Non-punitive reporting system