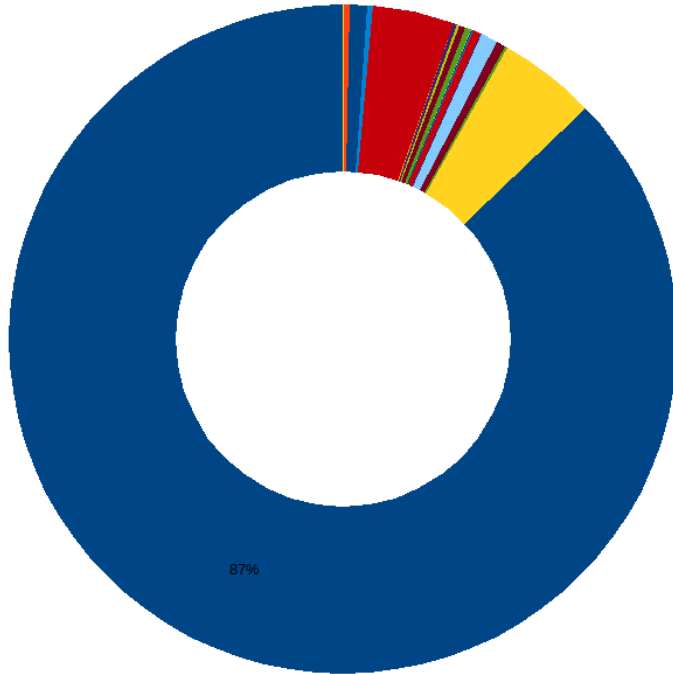


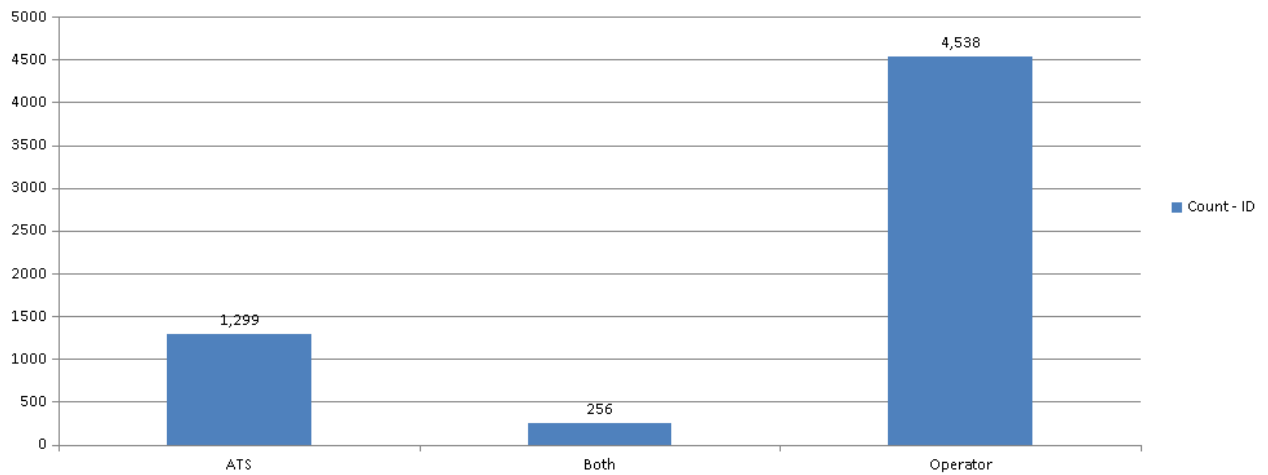
Correct vs Incorrect, Relative values

October 13 to 19, 2019



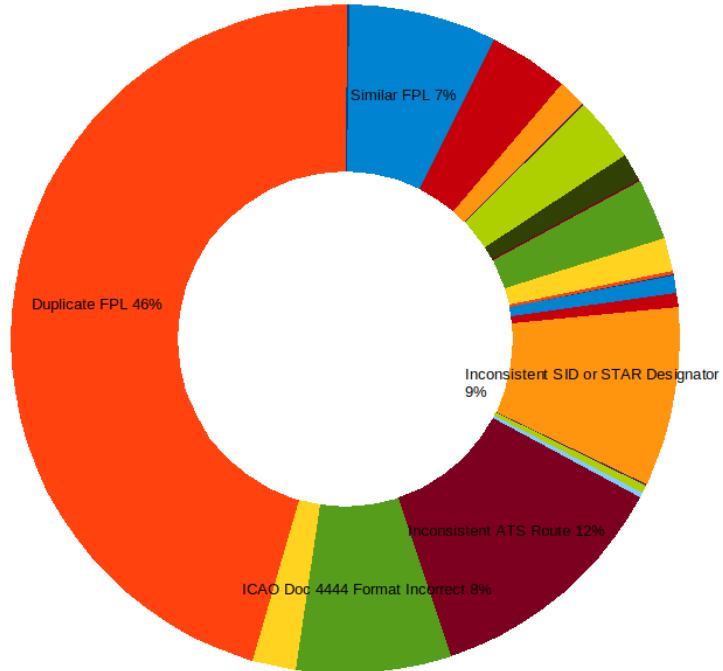
- Correct
- does not include ADEP
- Duplicate FPL
- FPL does not belong to FIR/State
- ICAO Doc 4444 Format Incorrect
- Inconsistent ATS Route
- Inconsistent Field 10
- Inconsistent Field 10 and Field 18
- Inconsistent Item 10 R/ and 18 PBN/
- Inconsistent Item 10 Z/ and 18 COM/ NAV/ DAT/ SUR/
- Inconsistent SID or STAR Designator
- Inconsistent Type of Aircraft and Speed or Level
- Inconsistent Wake Cat with Aircraft
- Incorrect RVSM Status
- Invalid Aircraft Model
- Invalid Date of Flight
- Invalid EET Data
- Invalid FL or Altitude
- Invalid Item 10 Data
- Invalid Item 18 Data
- Missing FPL
- No .
- No Alternate Aerodrome
- Other (not in the list)
- Similar FPL
- SPL Information Included
- Syntax Error in Field 16

Errors by Originator Type



Errors by Type, Absolute values

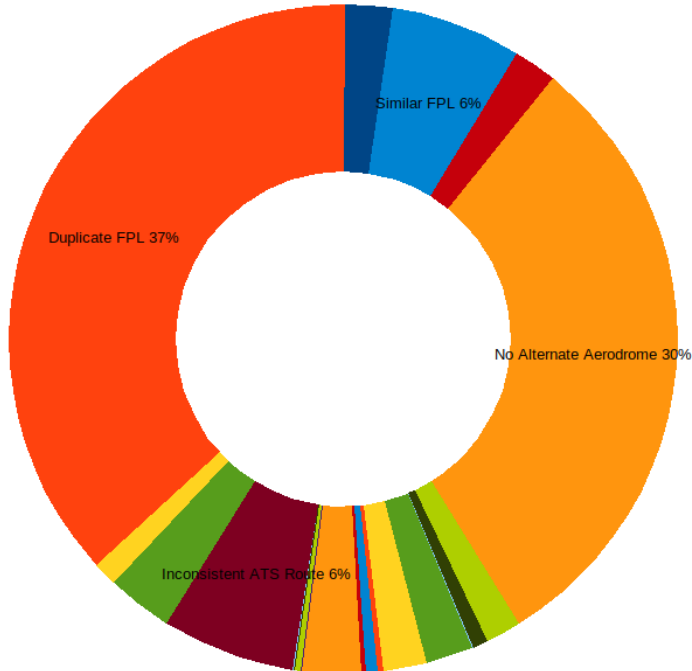
October 13 to 19, 2019



- does not include ADEP
- Duplicate FPL
- FPL does not belong to FIR/State
- ICAO Doc 4444 Format Incorrect
- Inconsistent ATS Route
- Inconsistent Field 10
- Inconsistent Field 10 and Field 18
- Inconsistent Item 10 R/ and 18 PBN/
- Inconsistent Item 10 Z/ and 18 COM/ NAV/ DAT/ SUR/
- Inconsistent SID or STAR Designator
- Inconsistent Type of Aircraft and Speed or Level
- Inconsistent Wake Cat with Aircraft
- Incorrect RVSM Status
- Invalid Aircraft Model
- Invalid Date of Flight
- Invalid EET Data
- Invalid FL or Altitude
- Invalid Item 10 Data
- Invalid Item 18 Data
- Missing FPL
- No .
- No Alternate Aerodrome
- Other (not in the list)
- Similar FPL
- SPL Information Included
- Syntax Error in Field 16

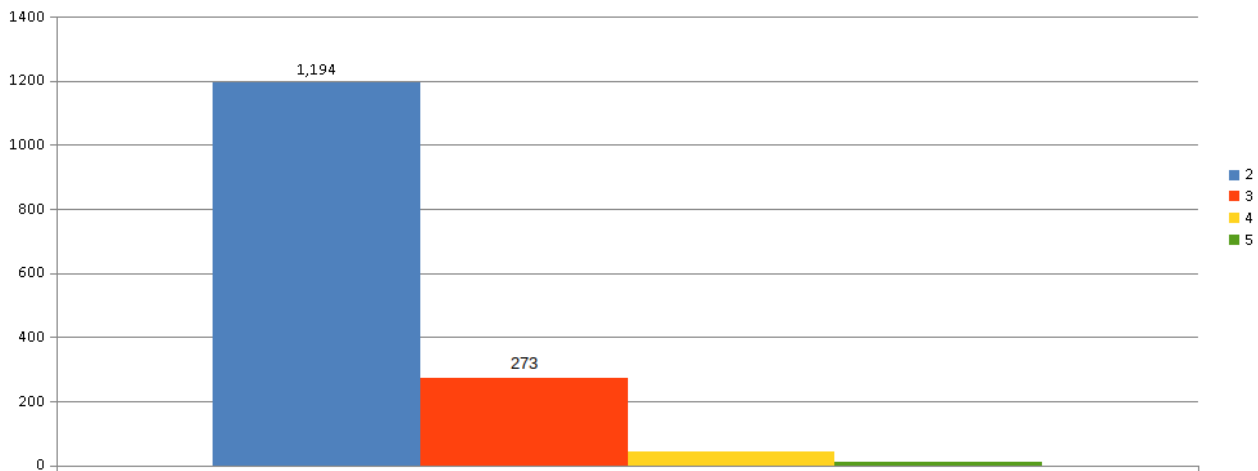
Errors by Type, Relative values

October 13 to 19, 2019



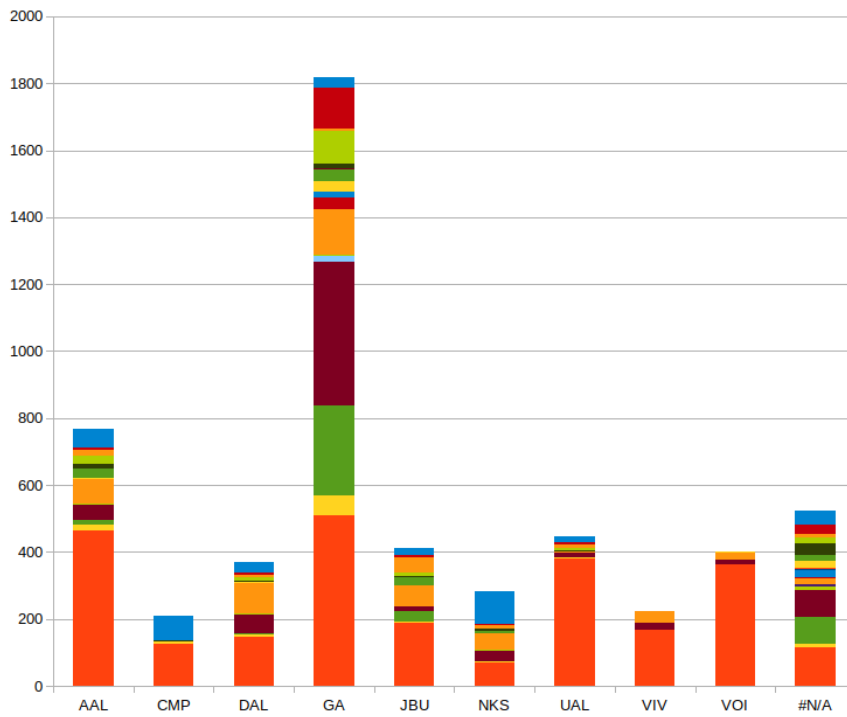
- does not include ADEP
- Duplicate FPL
- FPL does not belong to FIR/State
- ICAO Doc 4444 Format Incorrect
- Inconsistent ATS Route
- Inconsistent Field 10
- Inconsistent Field 10 and Field 18
- Inconsistent Item 10 R/ and 18 PBN/
- Inconsistent Item 10 Z/ and 18 COM/ NAV/ DAT/ SUR/
- Inconsistent SID or STAR Designator
- Inconsistent Type of Aircraft and Speed or Level
- Inconsistent Wake Cat with Aircraft
- Incorrect RVSM Status
- Invalid Aircraft Model
- Invalid Date of Flight
- Invalid EET Data
- Invalid FL or Altitude
- Invalid Item 10 Data
- Invalid Item 18 Data
- Missing FPL
- No .
- No Alternate Aerodrome
- Other (not in the list)
- Similar FPL
- SPL Information Included
- Syntax Error in Field 16

Flight Plans with Multiple Errors



Errors by Company, Absolute values

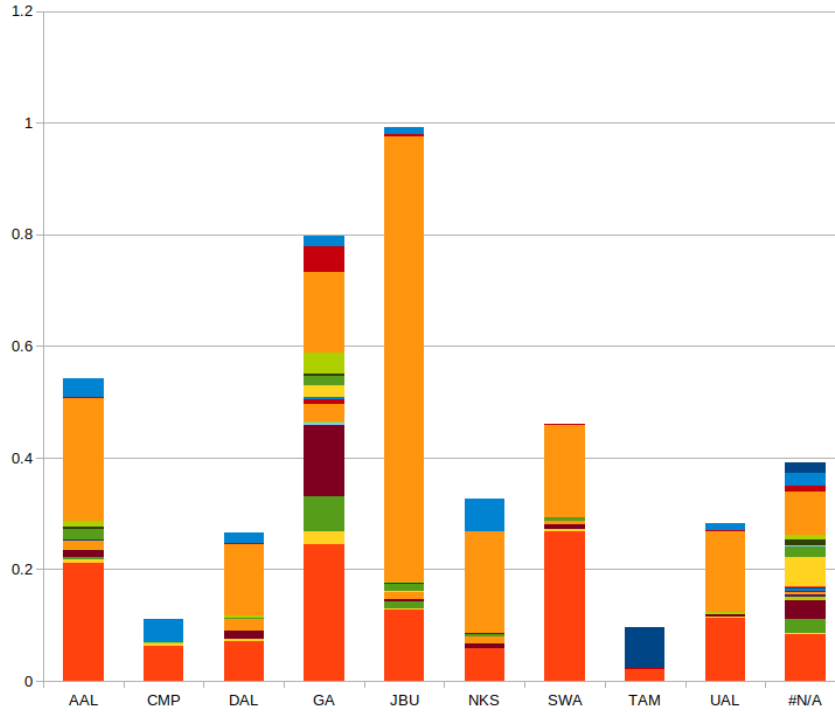
October 13 to 19, 2019



- Syntax Error in Field 16
- SPL Information Included
- Similar FPL
- Other (not in the list)
- No Alternate Aerodrome
- No .
- Missing FPL
- Invalid Item 18 Data
- Invalid Item 10 Data
- Invalid FL or Altitude
- Invalid EET Data
- Invalid Date of Flight
- Invalid Aircraft Model
- Incorrect RVSM Status
- Inconsistent Wake Cat with Aircraft
- Inconsistent Type of Aircraft and Speed or Level
- Inconsistent SID or STAR Designator
- Inconsistent Item 10 Z/ and 18 COM/ NAV/ DAT/ SUR/
- Inconsistent Item 10 R/ and 18 PBN/
- Inconsistent Field 10 and Field 18
- Inconsistent Field 10
- Inconsistent ATS Route
- ICAO Doc 4444 Format Incorrect
- FPL does not belong to FIR/State
- Duplicate FPL
- does not include ADEP

Errors by Company, Relative values

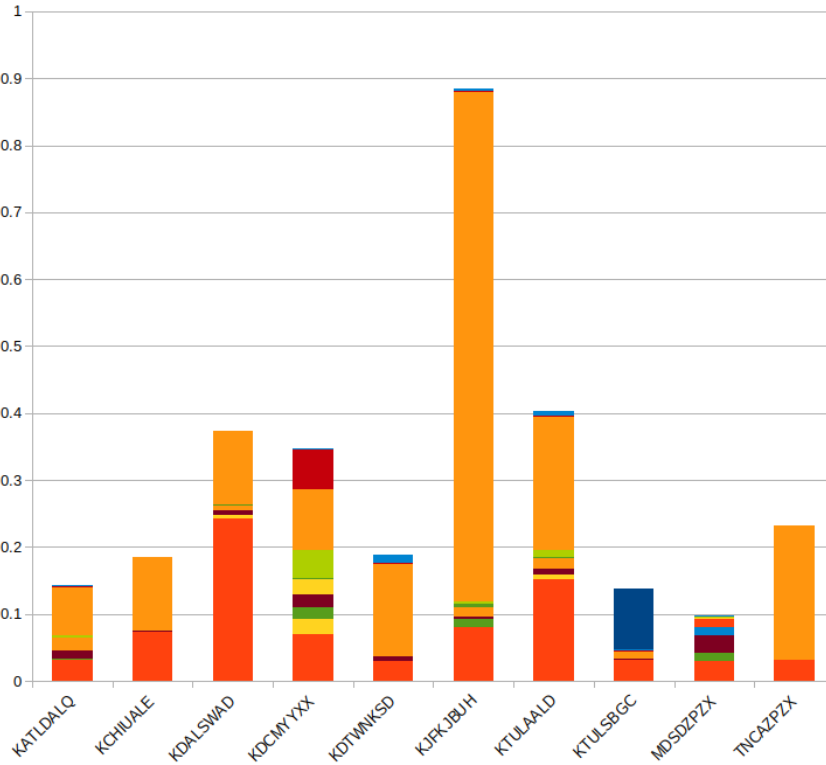
October 13 to 19, 2019



- Syntax Error in Field 16
- SPL Information Included
- Similar FPL
- Other (not in the list)
- No Alternate Aerodrome
- No .
- Missing FPL
- Invalid Item 18 Data
- Invalid Item 10 Data
- Invalid FL or Altitude
- Invalid EET Data
- Invalid Date of Flight
- Invalid Aircraft Model
- Incorrect RVSM Status
- Inconsistent Wake Cat with Aircraft
- Inconsistent Type of Aircraft and Speed or Level
- Inconsistent SID or STAR Designator
- Inconsistent Item 10 Z/ and 18 COM/ NAV/ DAT/ SUR/
- Inconsistent Item 10 R/ and 18 PBN/
- Inconsistent Field 10 and Field 18
- Inconsistent Field 10
- Inconsistent ATS Route
- ICAO Doc 4444 Format Incorrect
- FPL does not belong to FIR/State
- Duplicate FPL
- does not include ADEP

Errors by Originating Address, Relative values

October 13 to 19, 2019



- Syntax Error in Field 16
- SPL Information Included
- Similar FPL
- Other (not in the list)
- No Alternate Aerodrome
- No .
- Missing FPL
- Invalid Item 18 Data
- Invalid Item 10 Data
- Invalid FL or Altitude
- Invalid EET Data
- Invalid Date of Flight
- Invalid Aircraft Model
- Incorrect RVSM Status
- Inconsistent Wake Cat with Aircraft
- Inconsistent Type of Aircraft and Speed or Level
- Inconsistent SID or STAR Designator
- Inconsistent Item 10 Z/ and 18 COM/ NAV/ DAT/ SUR/
- Inconsistent Item 10 R/ and 18 PBN/
- Inconsistent Field 10 and Field 18
- Inconsistent Field 10
- Inconsistent ATS Route
- ICAO Doc 4444 Format Incorrect
- FPL does not belong to FIR/State
- Duplicate FPL
- does not include ADEP

