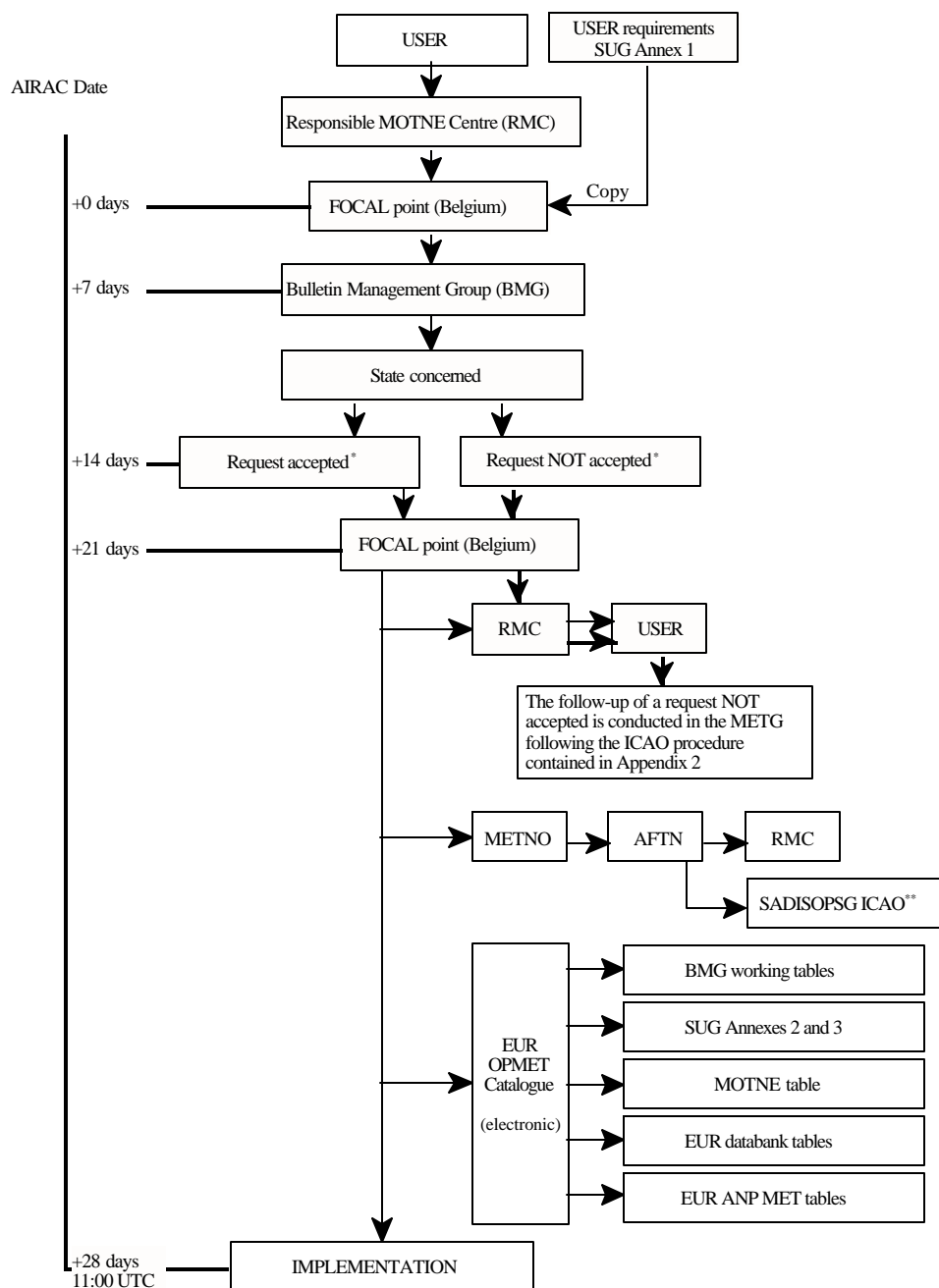


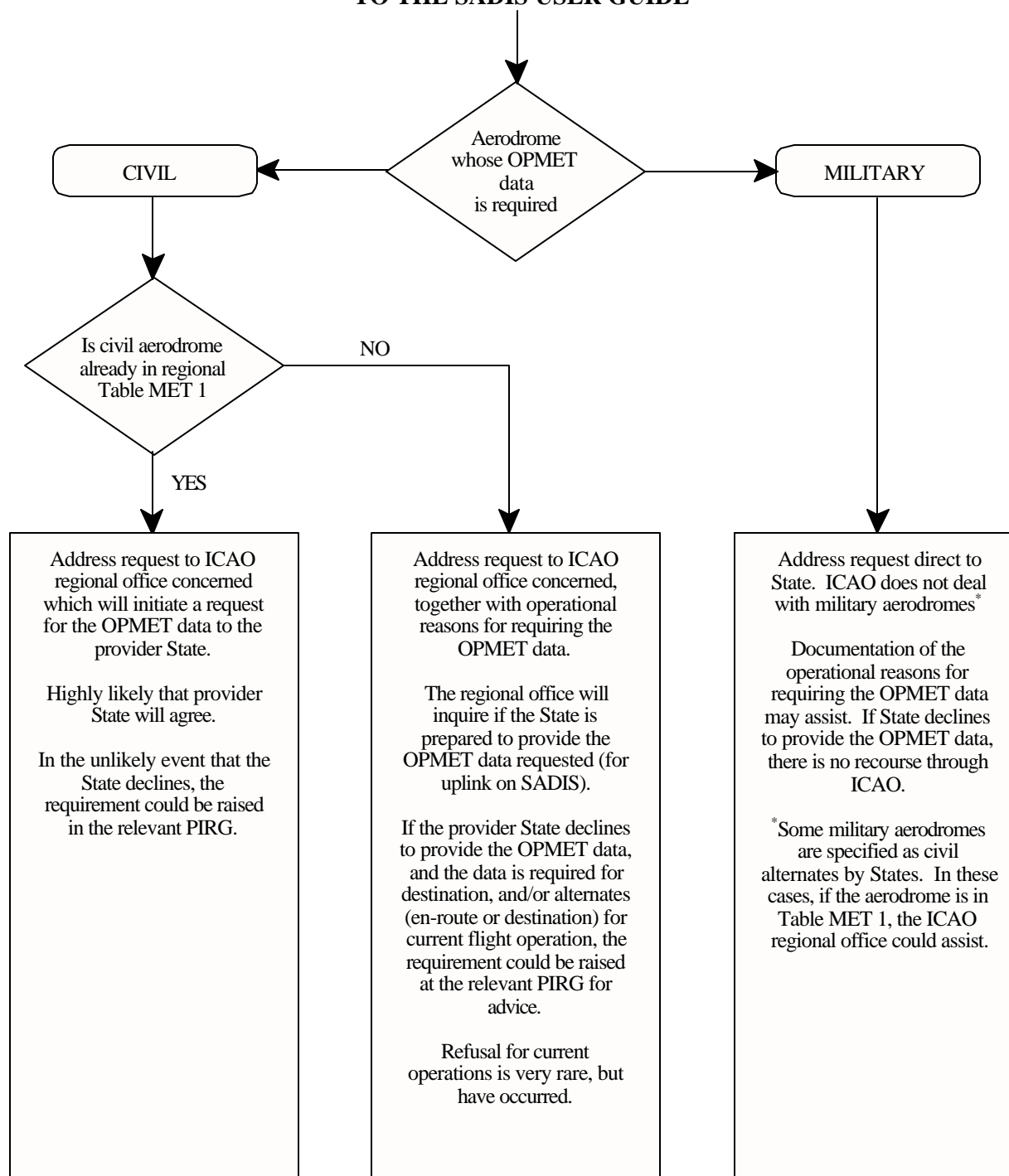
APPENDIX E

EUR OPMET DATA UPDATE PROCEDURE
FLOW DIAGRAM

* The "request accepted/not accepted" refers to EUR aerodrome not listed in SUG Annex 1.

** Via UKMO as SADIS provider State on behalf of the SADISOPSG.

**PROCEDURE FOR REQUESTING
ADDITIONAL AERODROMES OR
OPMET DATA TO LISTED IN ANNEX 1
TO THE SADIS USER GUIDE**



Note.— For civil aerodromes, changes to the requirements for OPMET data will be reflected in the relevant RAN Plan and, as necessary, in Annex 1 to the SADIS User Guide.

