



International Civil Aviation Organization

MIDANPIRG ATM Sub Group

Second Meeting (ATM SG/2)
(Cairo, Egypt, 30 November - 03 December 2015)

Agenda Item 4: MID Region ATS Route Network

MID ATS ROUTE NETWORK

(Presented by the Secretariat)

SUMMARY

The aim of this paper is to review and take appropriate actions to improve the ATS route network in the MID Region.

Action by the meeting is at paragraph 3.

REFERENCES

- ATS Route Catalogue
- MIDANPIRG/15 Report
- MID ANP (Table ATS 1 – ATS Route Network)

1. INTRODUCTION

1.1 The meeting may wish to note that effective interregional coordination and collaboration between all stakeholders is essential in order to achieve seamless air traffic management and more optimum routes through the airspace.

1.2 It is to be noted that the the implementation of Performance Based Navigation (PBN) routes can have significant efficiency benefits on flight operations in the en-route environment. PBN contribute to reduce route spacing, greater application of user preferred routes and increased airspace utilization.

2. DISCUSSION

2.1 The meeting may wish to recall that MIDANPIRG/15 meeting (Bahrain, 8-11 June 2015), noted that a number of States were still implementing changes to the Regional ATS Route Network without complying with the established procedures for the amendment of the MID Air Navigation Plan (ANP). Accordingly, the meeting urged States to adhere to the established ICAO procedures related to the publication and amendment of regional ATS routes.

2.2 The MIDANPIRG/15 meeting noted with concern that the Proposal for Amendment (PfA) Serial No. MID Basic ANP 13/01 – ATM, which was approved by the President of the ICAO Council on 2 August 2013, has not yet been implemented by Egypt and Jordan. Accordingly, the meeting urged the concerned States to take necessary measures in order to resolve this pending issue.

2.3 The MIDANPIRG/15 meeting reviewed and agreed to the revised Top Ten Routes as at **Appendix A**. The meeting urged concerned States to implement the Top Ten Routes and provide the ICAO MID Regional Office with an update on the actions undertaken by 1 October 2015, for review by the ATM SG/2 meeting. The meeting may wish to note that no update has been received by the MID Office.

2.4 The meeting may wish to note that as a follow-up action to the ANSIG/1 Draft Conclusion 1/3, the ICAO MID Regional Office processed PfA (Serial No.: MID Basic ANP 15/04 – ATM) to amend Table ATS 1, which was circulated through State Letter Ref.: AN 6/5A - 15/136 dated 6 May 2015. The PfA was approved by the ICAO Council on 16 June 2015. The latest version of Table ATS 1 is at **Appendix B**.

2.5 The meeting may wish to note that the process to ensure consistency between the coordinates of the waypoints, in particular when they form part of several ATS Routes is becoming a complicated issue. Accordingly, the Secretariat is proposing to remove from the Table ATS 1 the coordinates and the remarks related to “Boundary Point” in order to avoid any discrepancies related to FIR descriptions.

2.6 The MID ATS Route Catalogue, as updated by the ATM SG/1 meeting, is available on the ICAO MID website: (https://portal.icao.int/RO_MID/Pages/eDocs.aspx). The MIDANPIRG/15 meeting invited States to take into consideration the proposed routes contained in the routes Catalogue in their planning process for the improvement of the ATS route structure.

2.7 The MIDANPIRG/15 meeting was apprised of the developments carried out by ICAO to upgrade the ICARD platform (the State Letter Ref.: AN 11/45.5-15/32 dated 7 May 2015 refers). The meeting urged States and airspace users to report 5LNCs duplication and/or like-sounding issues, if any, to the ICAO MID Regional Office, to recommend appropriate solutions. It is to be highlighted that a new ICARD platform with enhanced features will be available beginning of 2016.

2.8 In connection with the above, the MIDANPIRG/15 meeting urged States to coordinate with the ICAO MID Regional Office the assignment/changes related to route designators.

2.9 The meeting may wish to note that recently the ICAO MID Regional Office in coordination with the concerned States and IATA has been working on the enhancement of the ATS route network at the following interfaces:

- Iran/Turkey and Iran/Pakistan:
 - a) OTS
 - b) DANOV-NH (in Karachi)
 - c) DULAV-SNJ (Eastbound)
 - d) LOVID-MAGRI (Westbound)
 - e) CRM-ZAJ (to replace ALARM)
 - f) ARI-AGINA-GODNA (UP146) Bidirectional

- Iran-Bahrain:

Concerns are related to current “bunching” and overload of point ROTOX for traffic entering Tehran FIR. It was reported that there are more than 70 movements per hour over UT444/UT602 and solution to this overload situation is required. Some solutions were proposed by EUROCONTROL are at **Appendix C**.

- Egypt/Cyprus:
 - a) NWB-LKATO; or
 - b) NWB-KAROLThe main objective of these the route is to facilitate the implementation of 10 or 15 NM longitudinal separation between Cairo and Nicosia ACCs and eventually between Cairo and Jeddah ACCs.
- Egypt/Jordan:
ATS Route T424 (TAKSU-KARIK-METSA) has been successfully implemented since 17 September 2015.
- Jordan/Saudi Arabia:
The ATS route UY415 (DEESA-LOTOK) has been Successful implemented on 17 September 2015.
- India/Oman:
ICAO is coordinating with India the implementation of 50 NM longitudinal separation between Mumbai and Muscat ACCs, as a follow-up action to the outcome of the Third Meeting of the Ad-hoc Afghanistan Contingency Group (AHACG/3) meeting (Muscat, Oman, 11-14 May 2015).

3. ACTION BY THE MEETING

3.1 The meeting is invited to:

- a) review and update the status of implementation of the top ten ATS routes at **Appendix A**, and amend the list as deemed necessary;
- b) review and update the MID ATS Route Catalogue;
- c) review and propose amendment to the MID ANP, Table ATS-1-ATS Route Network at **Appendix B**, as deemed necessary;
- d) discuss and take action as appropriate related to the proposal at para 2.5;
- e) urge States to comply with the established procedures for the amendment of the ATS route network by submitting requests to amend the Table ATS 1 prior the publication of the routes in their Aeronautical Information Publications (AIPs);
- f) urge States to take necessary measures to implement the agreed proposed routes aiming to improve the traffic flow in the MID Region; and
- g) discuss and take action as appropriate to the proposed routes reflected in para 2.9.

APPENDIX A

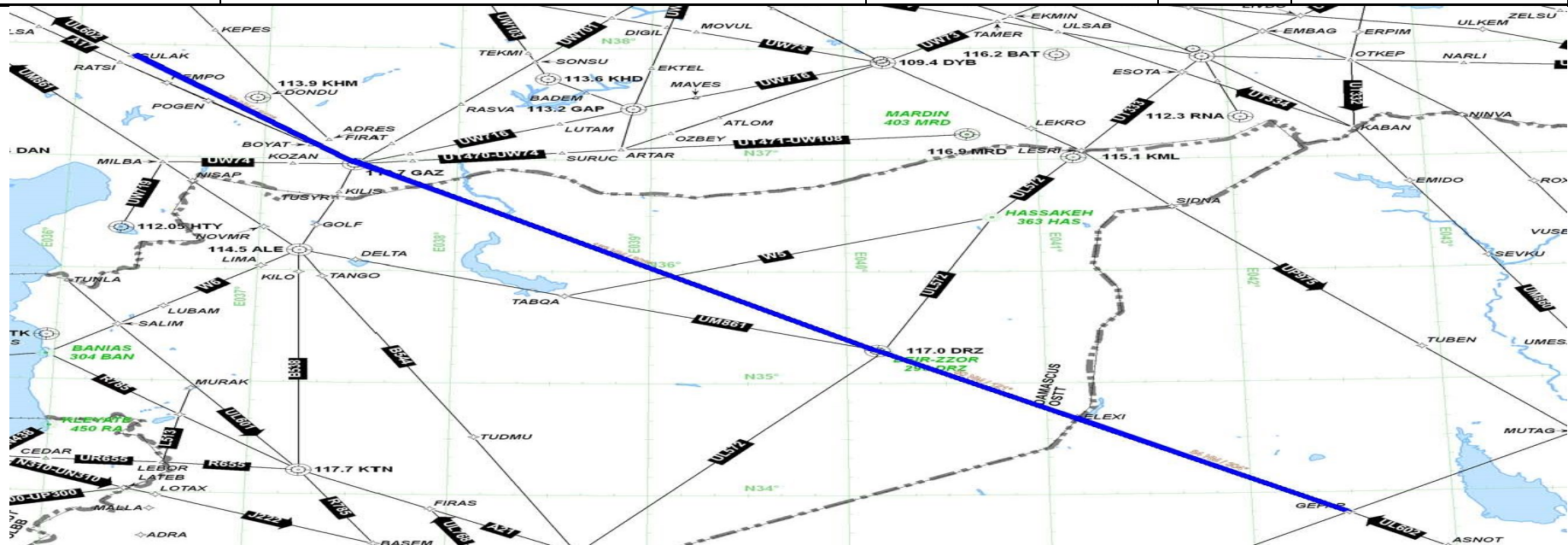
MID TOP 10 PROPOSED ATS ROUTES

TPR	ATS Route Catalogue Reference	ATS Route Affected	States Concerned	Status			Remarks
				Reviewed by	Date	Changed	
(a)	(b)	(c)	(d)	(e)	(f)	(g)	(h)
1	RC-035	UL602	Iraq – Syria-Turkey	ATM SG/1	June 2014	Yes	Pending for Syria approval
2	RC-045	New	Saudi Arabia-Sudan	ATM SG/1	June 2014	Yes	Moved to ANP
3	RC-055	L315	Egypt-Saudi Arabia	ATM SG/1	June 2014	Yes	Saudi proposed SOBEL-DEDLI
4	RC-056	New	Egypt	ATM SG/1	June 2014	Yes	
5	RC-070	New	Egypt-Libya	ATM SG/1	June 2014	Yes	Moved to ANP
6	RC-082	New	Jordan-Saudi Arabia	ATM SG/1	June 2014	Yes	Route amended and moved to ANP
7	RC-083	New	Egypt-Libya-Saudi Arabia	ATM SG/1	June 2014	Yes	Route amended and moved to ANP
8	Eurocontrol Proposal 1	New	Egypt	ATM SG/1	June 2014	New	
9	UKMUG-SIDAD	New	Bahrain-Iraq-Kuwait	ATM SG/1	June 2014	New	RNAV 1 Routes
10	SIDNA-ASLAN	New	Bahrain-Iraq-Kuwait	ATM SG/1	June 2014	New	RNAV 1 Routes

Table explanation

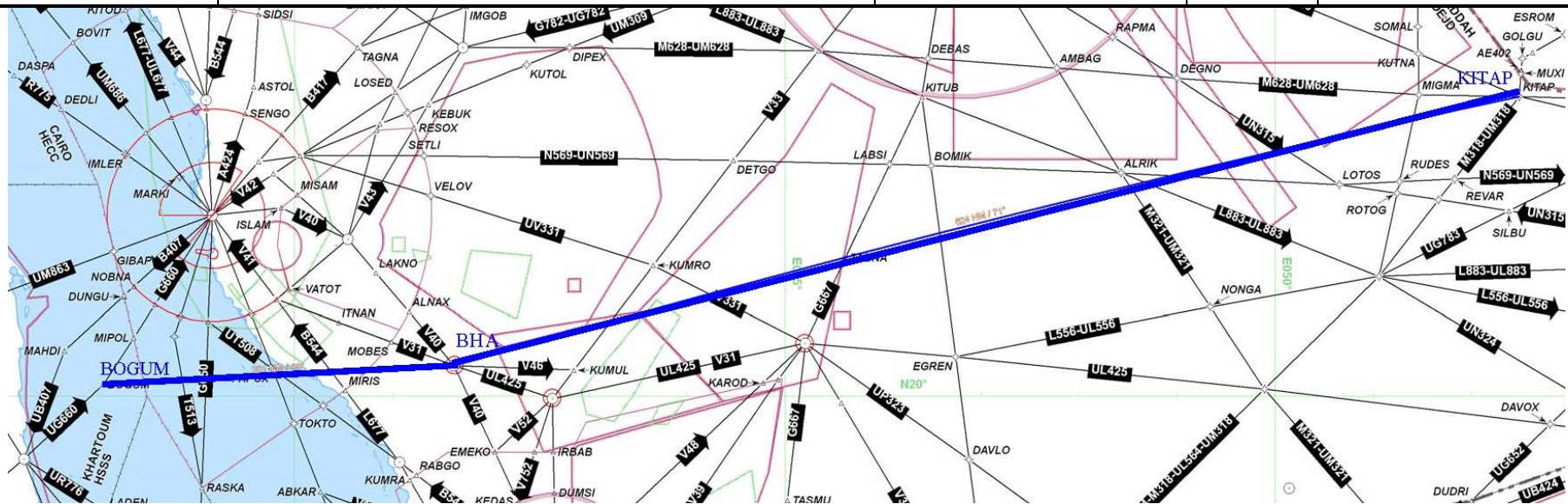
- a) TPR used as reference for the proposed Top 10 routes to be considered for implementation, numbers do not reflect the level of priority.
- b) Source of the proposed routes.
- c) Affected ATS Routes by the implementation of the new proposed routes.
- d) States Concerned with the implementation.
- e) The Group, Sub-Group or Task Force that had reviewed and updated the status of implementation of these top 10 routes.
- f) Date of last status update.
- g) Indicates if the status is changed or Not.
- h) Remarks

MID/RC-035 (TPR 1)	ATS Route Name: UL602	Entry-Exit: TUMAK (OB-OM) – KUKSI (OS-LT) MAKOL (LT) END		Inter- Rgional Cross Reference if any	Users Priority	URGENT	Originator of Proposal	Iraq
		Date of Proposal	RDGE/11 (Oct 2009)					
Route Description		States Concerned	Expected Impl. date	Implementation Status	ANP Status	Action Taken / Required	Deadline for each Action	
GEPAP 334906N 0422851E ELEXI 344130N 0410900E DRZ 351724N 0401124E GAZ 365701N 0372824E SULAK 375439N 0361712E		Iraq Syria Turkey		Entire route Westbound	Suspended in the Damascus FIR GEPAP (OR) to SULSAK (LT) not implemented	Syria requested additional time to examine the communication requirements by concerned FIR's. Once the communication issues are resolved it is expected that the ATS route will be implemented. Iraq has no objection	Conditional on Communication Pending acceptance by Syria, based on the status of communication infrastructure	
Flight Level Band: FL240-FL460								
Potential City Pairs:								
Conclusions/Remarks						Last updated	ATM SG/1 June 2014	



MID/RC-035 - (TPR 1)

MID/RC-045 (TPR 2)	ATS Route Name: New Route	Entry-Exit: PSD- KITAP	Inter-Regional Cross Reference if any		Users Priority		Originator of Proposal	IATA
							Date of Proposal	ARN TF/2
Route Description		States Concerned	Expected Impl. date	Implementation Status	ANP Status	Action Taken / Required	Deadline for each Action	
Port Sudan (PSD) BOGUM AI BAHA (BHA) KITAP		Saudi Arabia, Sudan		Not implemented	Moved to ANP August 2014	Sudan has no objection from Port Sudan to SALWA (CDR) KSA suggest Port Sudan BHA- KITAP (Normal route) will avoid CDR KSA needs more time for studying.		
Flight Level Band:								
Potential City Pairs: DGAA, DNMM, HSSS, OEJN, SBGR to OBBI, OMAA, OMDB, OTBD (Central and Eastern Arabian Peninsula to Sudan, West Africa, South America)								
Conclusions/Remarks		Saves 58 miles and 3196 Kg of CO2 to recalculate				Last updated	ATM SG/1 June 2014	



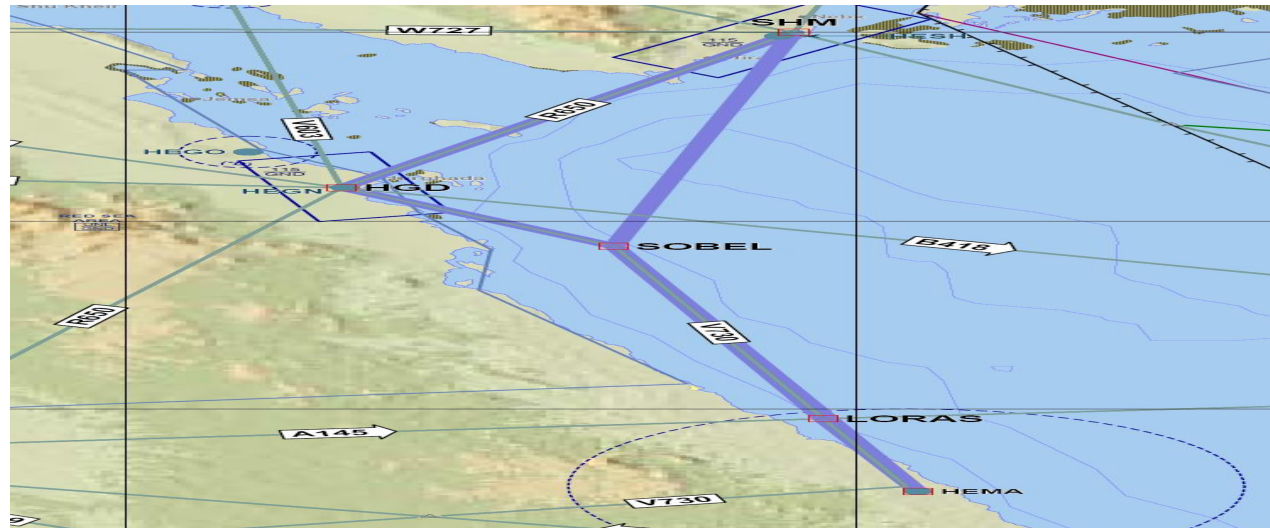
MID/RC-045 - (TPR 2)

ATM SG/2-WP/8
APPENDIX A

A-4

MID/RC-055 (TPR 3)	ATS Route Name: New Route L315	Entry-Exit: HEMA-CVO	Inter-Regional Cross Reference if any		Users Priority		Originator of Proposal	IATA
							Date of Proposal	ARN TF/2
Route Description MAK-CVO		States Concerned	Expected Impl. date	Implementation Status	ANP Status	Action Taken / Required	Deadline for each Action	
GIBAL HGD CVO		Egypt Saudi Arabia		Implemented with opposite direction CVO-HGD Eastbound GIBAL-HGD Westbound	Already in ANP	Saudi Arabia proposed L315 westbound and new Segment HDG or SOBEL-DEDLI for eastbound. This requires that CVO-HGD to be bi-directional. Pending Egypt approval		
Flight Level Band: Upper								
Potential City Pairs: North-western Red Sea to HECA and Europe								
Conclusions/Remarks	Saves 9 miles					Last updated	ATM SG/1 June 2014	

MID/RC-056 (TPR 4)	ATS Route Name: New Route	Entry-Exit: HEMA-SHM	Inter-Regional Cross Reference if any		Users Priority	Originator of Proposal	IATA
						Date of Proposal	ARN TF/2
Route Description HEMA-SHM		States Concerned	Expected Impl. date	Implementation Status	ANP Status	Action Taken / Required	Deadline for each Action
Flight Level Band: Upper		Egypt		No progress reported		IATA to provide further details Tied with L315 await further discussions from Egypt.	
Potential City Pairs: HESH, Eastern Mediterranean, Europe to Western Red Sea Coast							
Conclusions/Remarks	Saves 17 miles					Last updated	ATM SG/1 June 2014

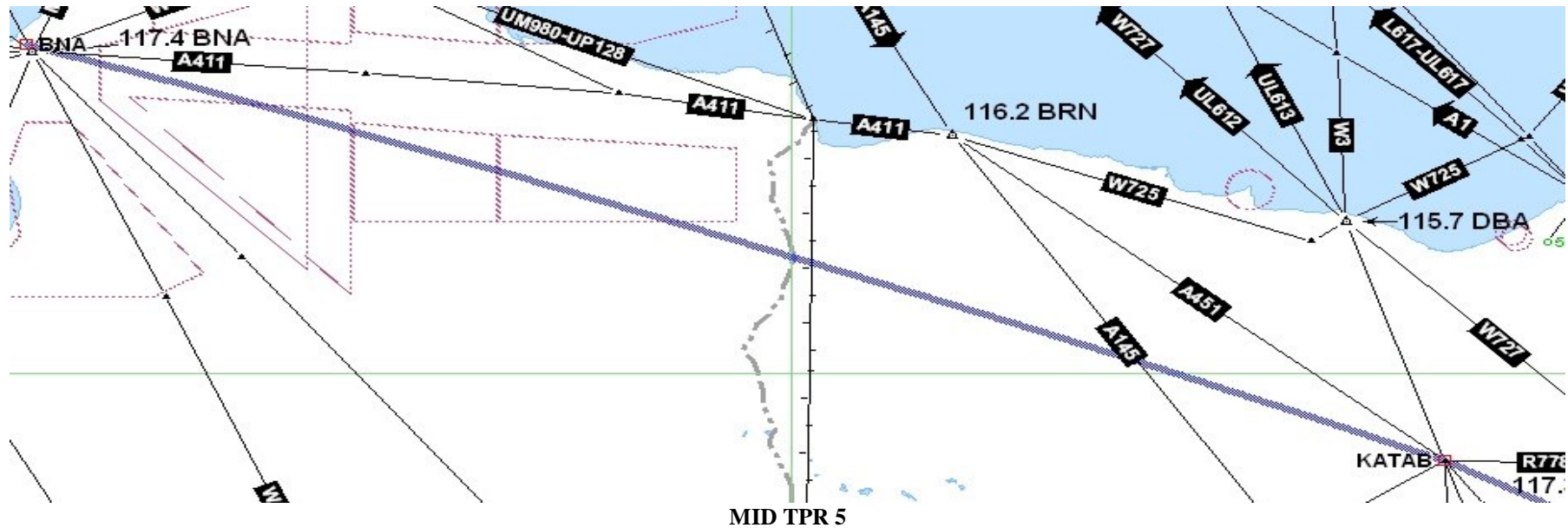


MID/RC-056- (TPR 4)

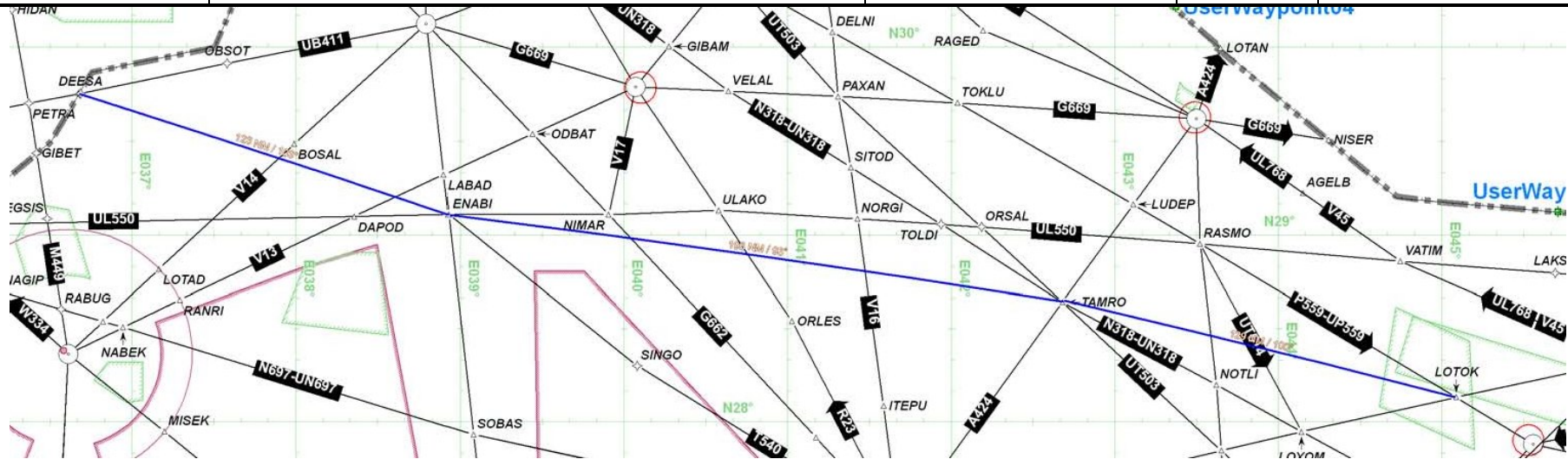
ATM SG/2-WP/8
APPENDIX A

A-6

MID/RC-070 (TPR 5)	ATS Route Name: New Route	Entry-Exit: BNA-KATAB- SEMURU	Inter-Regional Cross Reference if any		Users Priority	High	Originator of Proposal	IATA
							Date of Proposal	ARN TF/1
Route Description		States Concerned	Expected Impl. date	Implementation Status	ANP Status	Action Taken/Required	Deadline for each Action	
BNA (N32 07.5 E020 15.2) – KATAB (N29 25.0 E029 05.1)		Egypt Libya		New ATS route.	Moved to ANP	Differed for the future		
Flight Level Band: FL290 – FL410						Implement if possible Priority Routes		
Potential City Pairs: CMN/ALG/TUN/TIP-DOH						Requires further coordination with concerned States Egypt and Libya to implement the route		
Conclusions/Remarks		This AWY would save considerable track miles BNA – KATAB – SEMRU Libya FIR to Egypt FIR				Last updated	ATM SG/1 June 2014	



MID/RC-082 (TPR 6)	ATS Route Name: New Route UQ597 Eastbound	Entry-Exit: DANAD - METSA - ASH - ULOVO		Inter-Regional Cross Reference if any		Users Priority High	Originator of Proposal	IATA iFLEX Proposal
		Date of Proposal	17 May 2011					
Route Description		States Concerned	Expected Impl. date	Implementation Status		ANP Status	Action Taken/Required	Deadline for each Action
DEESA ENABI TAMRO LOTOK		Jordan Saudi Arabia				Moved to ANP	Connecting to UP559. Implement if possible Priority Routes	TBD
Flight Level Band:							Saudi Arabia to implement the route	
Potential City Pairs: Dakar FIR, Algiers FIR, Tripoli FIR, Cairo FIR, Jeddah FIR								
Conclusions/Remarks	Proposals agreed to by some State during the iFLEX workshop Dubai						Last updated	ATM/AIM/SAR SG/13 SEP 2013

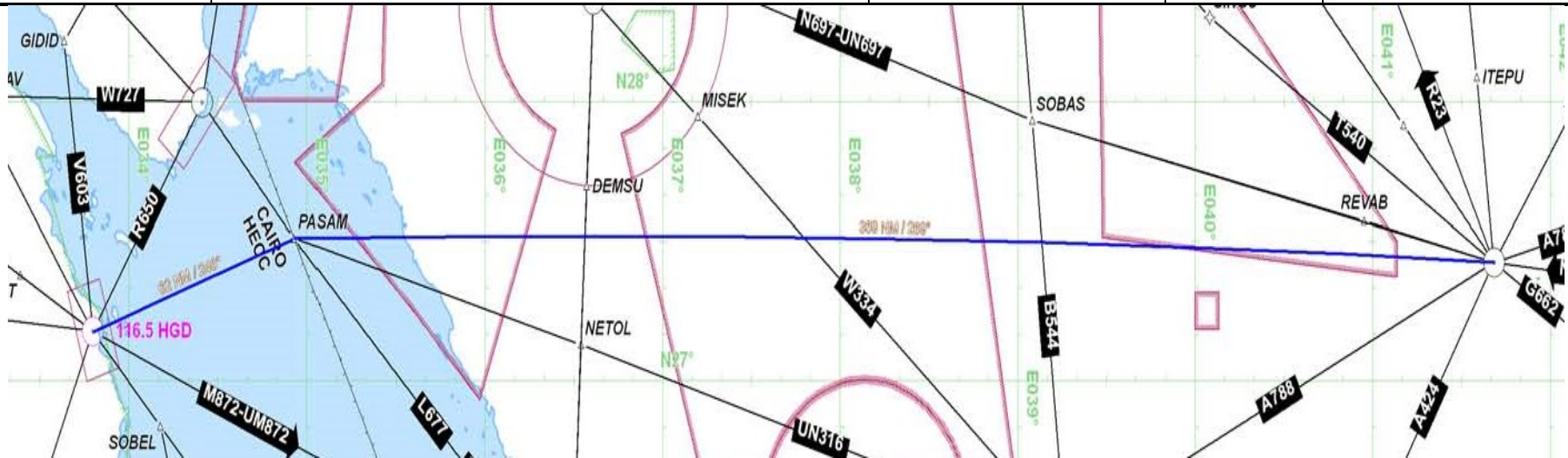


MID TPR 6

ATM SG/2-WP/8
APPENDIX A

A-8

MID/RC-083 (TPR 7)	ATS Route Name: New Route UQ598 Westbound	Entry-Exit: DITAR – NABED – PASAM – HIL - ANTER - KUTEM		Inter-Regional Cross Reference if any		Users Priority High	Originator of Proposal	IATA iFLEX Proposal
		Date of Proposal	17 May 2011					
Route Description		States Concerned	Expected Impl. date	Implementation Status		ANP Status	Action Taken/Required	Deadline for each Action
HIL PASAM HGD		Egypt Saudi Arabia				Moved to ANP	Implement if possible Priority Routes Important Segment HGD-PASAM It's a west bound direction (FUA) N697 - HIL-PASAM-HGD -V608 RC 083 amended to include segment AST-DITAR only Concerned States to implement the route	TBD
Flight Level Band:								
Potential City Pairs:								
Conclusions/Remarks							Last updated	ATM SG/1 June 2014

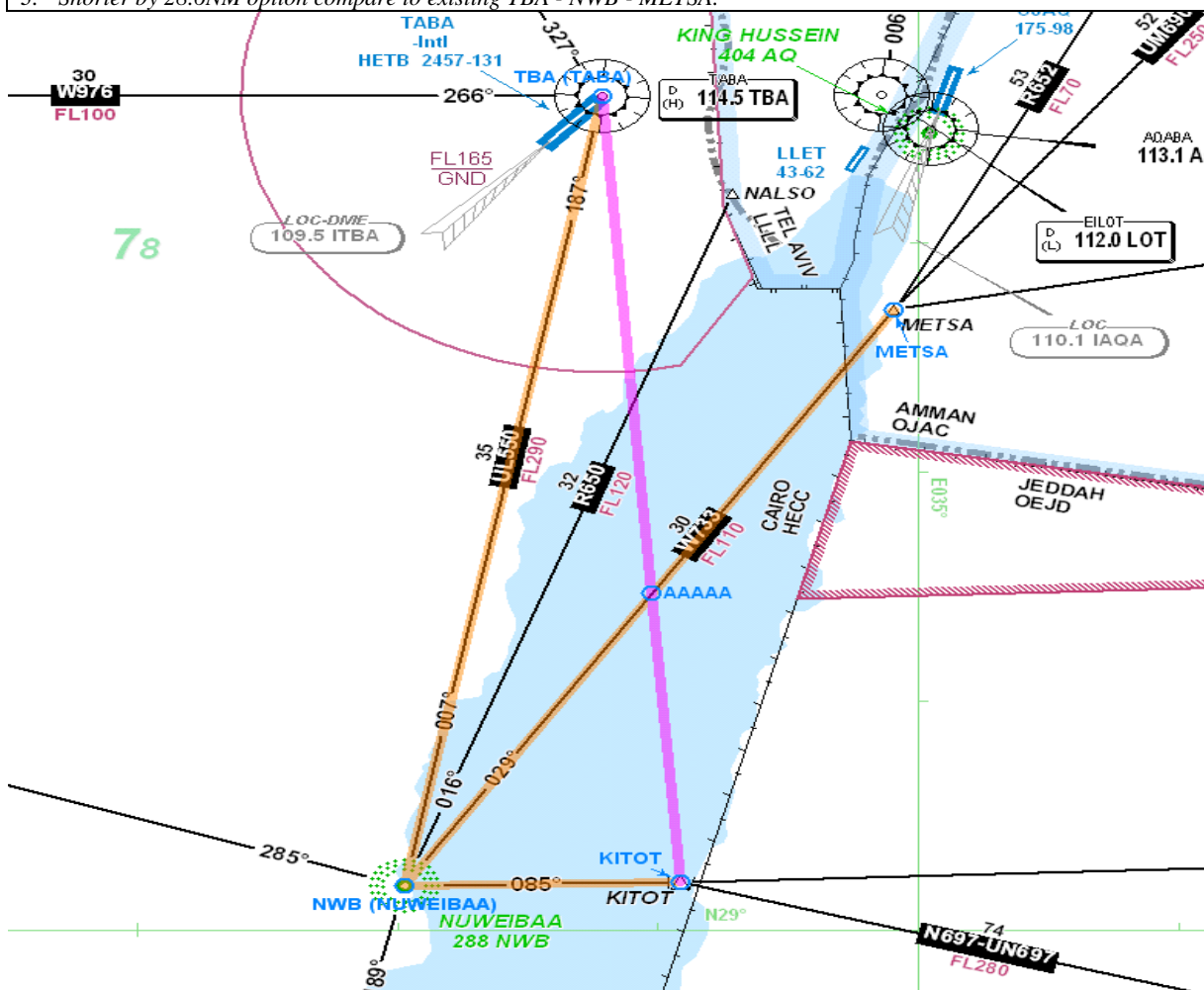


MID (TPR 7)

Eurocontrol proposals

Reference	Objective and Proposal	State(s) concerned
TPR 8	<i>Objective:</i> To further improve ATS route network within Cairo FIR.	EGY
	To implement bi-directional ATS route TBA - AAAAA - KITOT .	Originator EUROCONTROL

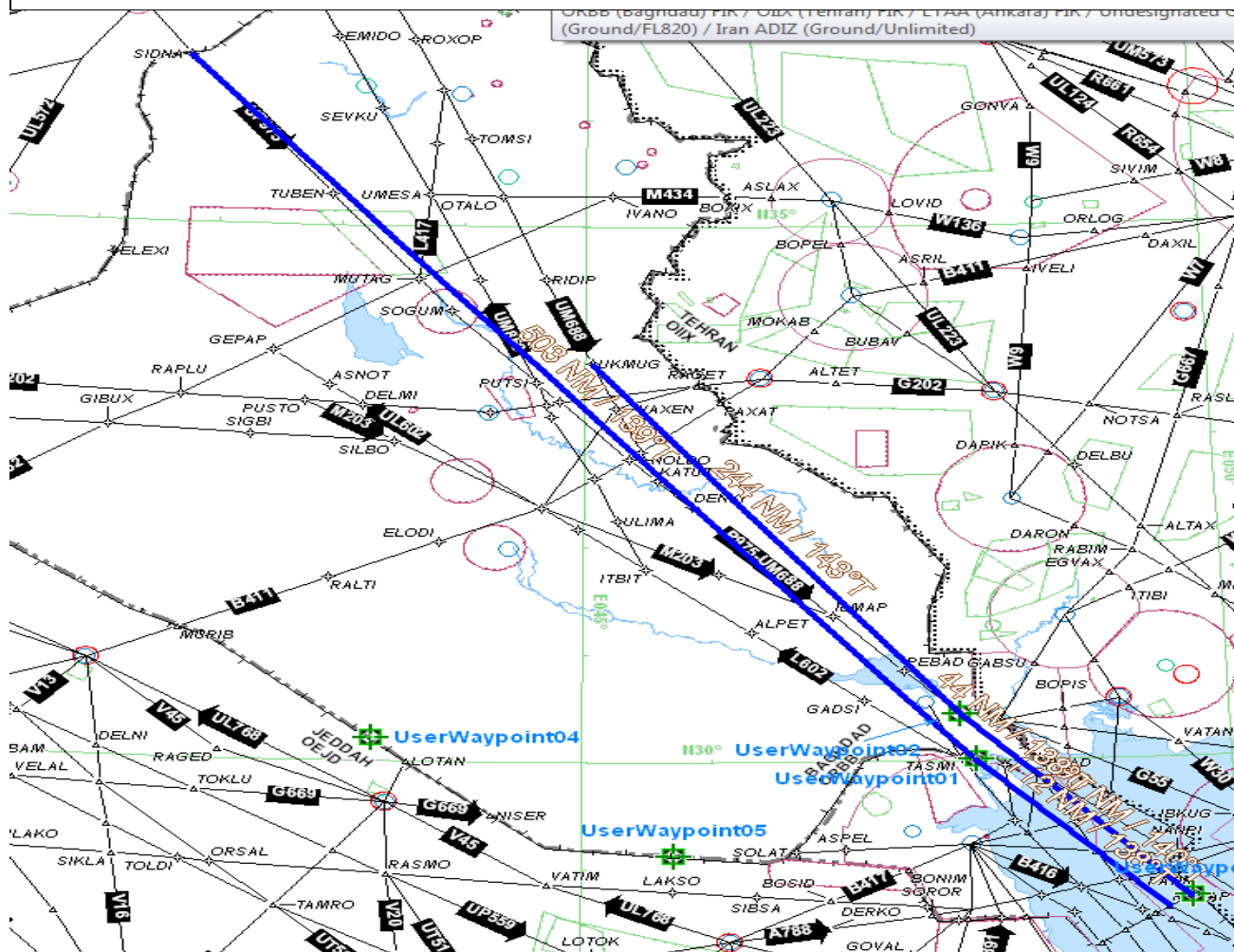
Notes:
 1. AAAAA - crossing point between new TBA - KITOT and existing ATS route W733 allowing connection to/from METSA.
 2. Shorter by 9.2NM option compare to existing TBA - NWB - KITOT.
 3. Shorter by 28.6NM option compare to existing TBA - NWB - METSA.



(TPR 8)

Reference	Objective and Proposal	State(s) concerned
TPR 9	<i>Objective:</i> To further improve ATS route network between Baghdad and Kuwait FIRs.	Bahrain-Iraq-Kuwait
	To implement ATS route UKMUG-SIDAD- New Point East of RABAP then join the ATS Route network within Bahrain.	Originator ATM/AIM/SAR SG13 Oct 2013
Notes: 1. RNAV 1 Routes, target date of implementation second quarter of 2014.		

Reference	Objective and Proposal	State(s) concerned
TPR 10	<i>Objective:</i> To further improve ATS route network between Baghdad and Kuwait FIRs.	Bahrain-Iraq-Kuwait
	To implement ATS route SIDNA-New point West of ASLAN-RABAP .	Originator ATM/AIM/SAR SG13 Oct 2013
Notes: 2. RNAV 1 Routes, target date of implementation second quarter of 2014.		



TPR 9 and 10

APPENDIX B

MID Basic ATM Section

ATS Table 1

LOWER AIRSPACE		UPPER AIRSPACE	
Designator 1	Significant Points 2	Designator 1	Significant Points 2
A1	METRU 340000N 0250900E SOKAL 323601N 0273706E KATEX 320701N 0282436E BOPED 312939N 0292655E ALEXANDRIA (NOZ) 311113N 0295701E MENKU 310531N 0301806E CAIRO (CVO) 300532N 0312318E	UA1	METRU 340000N 0250900E SOKAL 323601N 0273706E KATEX 320701N 0282436E BOPED 312939N 0292655E ALEXANDRIA (NOZ) 311113N 0295701E MENKU 310531N 0301806E CAIRO (CVO) 300532N 0312318E
A16	RASDA 330600N 0305700E MELDO 320201N 03104406E BALTIM (BLT) 313144N 0311035E DEGDI 311429N 0311035E CAIRO (CVO) 300532N 0312318E	UA16	RASDA 330600N 0305700E MELDO 320201N 03104406E BALTIM (BLT) 313144N 0311035E DEGDI 311429N 0311035E CAIRO (CVO) 300532N 0312318E
A408	(ADDIS ABABA) GWZ SALEH 140000N 0420000E ORNIS 1416.2N04236.9E HODEIDAH 1446.4N 04259.2E	UA408	(ADDIS ABABA) GWZ SALEH 140000N 0420000E ORNIS 1416.2N04236.9E HODEIDAH 1446.4N 04259.2E
A411	BNINA (BNA) 3207.28N 0201513E NASER 3151.2N 2355.3E LOSUL 314100N 250800E SIDI BARANI (BRN) 313532N 260020E	UA411	BNINA (BNA) 3207.28N 0201513E NASER 3151.2N 2355.3E LOSUL 314100N 250800E SIDI BARANI (BRN) 313532N 260020E
A412	TANF ZELAF 325656N 0371121E DAXEN 324444N 0374105E ASLON 321211N 0365111E NADEK 322728N 0371429E KUPRI 320825N 0364530E LUDAN 320256N 0363713E QAA 314423N 0360926E	UA412	TANF ZELAF 325656N 0371121E DAXEN 324444N 0374105E ASLON 321211N 0365111E NADEK 322728N 0371429E KUPRI 320825N 0364530E LUDAN 320256N 0363713E QAA 314423N 0360926E
A416	TABRIZ (TBZ) ARDABIL (ARB) RASHT (RST) RAMSAR (RSR) NOSHAHR (NSR) DASHTI NAZ (DNZ) SABZEVAR (SBZ) MASHHAD (MSD)	UA416	TABRIZ (TBZ) ARDABIL (ARB) RASHT (RST) RAMSAR (RSR) NOSHAHR (NSR) DASHTI NAZ (DNZ) SABZEVAR (SBZ) MASHHAD (MSD)

LOWER AIRSPACE

UPPER AIRSPACE

Designator 1	Significant Points 2
	SOKAM 331316N 0603754E
A418	KUMUN 254000N 0551515E PAPAR 2640N 05427E * Note 7 Segment KUMUN-PAPAR (OI and OM) SHIRAZ (SYZ)
A422	UROMIYEH (UMH) SETNA 3756.3N 04555.4E TABRIZ PARSABAD (PAD) PARSU 3937.8N 04804.8E KARAD 4014.3N 04929.5E (BAKU)
A424	LOVEK 322208N 04440 01E LOTAN 2959.7N 04338.8E RAFHA HAIL MADINAH (PMA) ASTOL 2255.0N 03935.2E KING ABDULAZIZ (JDW)
A453	PIRAN 293406N 0612806E ZAHEDAN (ZDN) BANDAR ABBAS (BND) GHESHM (KHM) BANDAR LENGEH (LEN) KISH MIDSU 2641.7N05152.5E BOTOB 263350N 0514505E ALMOK 262832N 0513840E SOLOB 262241N 0513132E TOBLI 262134N0512301E SOGAT 262029N 0511443E ASTAD 261811N 0505646E BAHRAIN * Note 7 (OB, OI) ELOSO 262409N 0503550E EGMOR 264210N 0502906E LOTOR 264854N 0502200E RAMSI 270249N 0500714E ORNAK 272853N 0493248E SOLEM 275229N 0491136E KUMBO 281705N 0495526E AWADI 283430N 0484354E DEBTI 284406N 0482924E

Designator 1	Significant Points 2
	SOKAM 331316N 0603754E
UA418	KUMUN 254000N 0551515E PAPAR 2640N 05427E * Note 7 Segment KUMUN-PAPAR (OI and OM) SHIRAZ (SYZ)
UA422	UROMIYEH (UMH) SETNA 3756.3N 04555.4E TABRIZ PARSABAD (PAD) PARSU 3937.8N 04804.8E KARAD 4014.3N 04929.5E (BAKU)
UA424	LOVEK 322208N 04440 01E LOTAN 2959.7N 04338.8E RAFHA HAIL MADINAH (PMA) ASTOL 2255.0N 03935.2E KING ABDULAZIZ (JDW)
UA453	PIRAN 293406N 0612806E ZAHEDAN (ZDN) BANDAR ABBAS (BND) GHESHM (KHM) BANDAR LENGEH (LEN) KISH MIDSU 2641.7N05152.5E BOTOB 263350N 0514505E ALMOK 262832N 0513840E SOLOB 262241N 0513132E TOBLI 262134N0512301E SOGAT 262029N 0511443E ASTAD 261811N 0505646E BAHRAIN * Note 7 (OB, OI) ELOSO 262409N 0503550E EGMOR 264210N 0502906E LOTOR 264854N 0502200E RAMSI 270249N 0500714E ORNAK 272853N 0493248E SOLEM 275229N 0491136E KUMBO 281705N 0495526E AWADI 283430N 0484354E DEBTI 284406N 0482924E

LOWER AIRSPACE

UPPER AIRSPACE

Designator 1	Significant Points 2	Designator 1	Significant Points 2
	KUA 291306N 0475906E		KUA 291306N 0475906E
A454	(KC) 2454.6N 06710.6E BEGIM 2443.0N 06700.0E * Note 7 (OO, OP) MELOM 2505.0N 06632.0E PUNEL 2520.0N 06523.0E PARET 2527.2N 06451.5E TAPDO 242400N 0612000E VUSET 235540N 0590812E PASOV 243841N 0565037E	UA454	(KC) 2454.6N 06710.6E BEGIM 2443.0N 06700.0E * Note 7 (OO, OP) MELOM 2505.0N 06632.0E PUNEL 2520.0N 06523.0E PARET 2527.2N 06451.5E TAPDO 242400N 0612000E VUSET 235540N 0590812E PASOV 243841N 0565037E
A727	(PAXIS 3357.1N 02720.0E OTIKO 3134.3N 02936.6E ALEXANDRIA (NOZ) MENKU 3105.5N 03018.1E CAIRO (CVO) LUXOR (LXR) ABU SIMBLE (SML) NUBAR 220000N 03118.1E MEROWE (MRW) KHARTOUM (KTM) KENANA (KNA) LODWAR (LOV) NAKURU (NAK) NAIROBI (NV) KILIMANJARO (KV)	UA727	(PAXIS 3357.1N 02720.0E OTIKO 3134.3N 02936.6E ALEXANDRIA (NOZ) MENKU 3105.5N 03018.1E CAIRO (CVO) LUXOR (LXR) ABU SIMBLE (SML) NUBAR 220000N 03118.1E MEROWE (MRW) KHARTOUM (KTM) KENANA (KNA) LODWAR (LOV) NAKURU (NAK) NAIROBI (NV) KILIMANJARO (KV)
		UA775	REXOD 211230N 0613830E TUMET 222307N 0595702E IMDEK 224647N 0592217E OBTIN 230216N 0585920E KUSRA 231726N 0585102E
A777	TONVO 250500N 0563200E BUBAS 245938N 05700 03E * Note 7 (OO) NADSO 244957N 0574926E MUNGA 242516N 0584533E MIXOL 240618N 0592739E VAXIM 231900N 0611100E		
A788	HALAIFAH HAIL HAFR AL BATIN (HFR) *Note 7 WAFRA 2837. 3N 04757. 5E PATIR 285606N 0492923E KHARK (KHG)	UA788	HALAIFAH HAIL HAFR AL BATIN (HFR) *Note 7 WAFRA 2837. 3N 04757. 5E PATIR 285606N 0492923E KHARK (KHG)

LOWER AIRSPACE

UPPER AIRSPACE

Designator 1	Significant Points 2	Designator 1	Significant Points 2
	SHIRAZ		SHIRAZ
B12	TANSA 340000N 0264900E SOKAL 323601N 0273706E EL DABA (DBA) 310041N 0282801E KATAB 292501N 0290506E BOPOS 264318N 0300722E DEPNO 262438N 0301413E EL KHARGA (KHG) 252654N 0303527E ABU SIMBEL (SML) 222118N 0313719E	UB12	TANSA 340000N 0264900E SOKAL 323601N 0273706E EL DABA (DBA) 310041N 0282801E KATAB 292501N 0290506E BOPOS 264318N 0300722E DEPNO 262438N 0301413E EL KHARGA (KHG) 252654N 0303527E ABU SIMBEL (SML) 222118N 0313719E
B121	RUDESHUR (RUS) RASHT (RST) MAGRI 385408N 0462300E	UB121	RUDESHUR (RUS) RASHT (RST) MAGRI 385408N 0462300E
B400	MUSCAT (MCT) ITURA 232351N 0580720E IZKI (IZK) HAIMA (HAI) ASTUN 180832N0551040E DAXAM 171612N 0544715E MUTVA 165325N 0543201E IMKAD 155245N 0535147E NODMA 152603N 0533358E RIGAM 143932N 0530414E RAPDO 132317N 0521532E VEDET 120134N 0512410E (MOGADISHU)	UB400	MUSCAT (MCT) ITURA 232351N 0580720E IZKI (IZK) HAIMA (HAI) ASTUN 180832N0551040E DAXAM 171612N 0544715E MUTVA 165325N 0543201E IMKAD 155245N 0535147E NODMA 152603N 0533358E RIGAM 143932N 0530414E RAPDO 132317N 0521532E VEDET 120134N 0512410E (MOGADISHU)
		UB403	MANDERA BOMIX 121002N 0502757E ODBEN 123747N 0505648E KAVAN 133250N 0515431E RIGAM 143932N 0530414E
B404	HARGA (HARGEISA) DEMGO 120258N 0483040E PURKA 131208N 0503042E GESIX 134440N 0512823E RIGAM 143932N 0530414E	UB404	HARGA (HARGEISA) DEMGO 120258N 0483040E PURKA 131208N 0503042E GESIX 134440N 0512823E RIGAM 143932N 0530414E
B407	KING ABDULAZIZ (JDW) KAROX 205717N 0381547E MAHDI 2026.0N 03739.3E (PORT SUDAN) PSD	UB407	KING ABDULAZIZ (JDW) KAROX 205717N 0381547E MAHDI 2026.0N 03739.3E (PORT SUDAN) PSD
B411	ROVAR 292438N0345711E AL SHIGAR (ASH) ARAR (AAR)	UB411	ROVAR 292438N0345711E AL SHIGAR (ASH) ARAR (AAR)

LOWER AIRSPACE

UPPER AIRSPACE

Designator 1	Significant Points 2	Designator 1	Significant Points 2
	MURIB 311337N 0415136E LOVEK 3222.1N 04440.0E NOLDO 3249.5N 04521.5E PAXAT 332056N 0460519E ILAM (ILM) KERMANSHAH(KMS) SAVEH (SAV) [TEHRAN] (TRN) * Note 1 DEHNAMAK (DHN) SABZEVAR (SBZ) MASHHAD (MSD)		MURIB 311337N 0415136E LOVEK 3222.1N 04440.0E NOLDO 3249.5N 04521.5E PAXAT 332056N 0460519E ILAM (ILM) KERMANSHAH(KMS) SAVEH (SAV) [TEHRAN] (TRN) * Note 1 DEHNAMAK (DHN) SABZEVAR (SBZ) MASHHAD (MSD)
B412	HALAIFA (HLF) RABIGH (RBG) [KING ABDULAZIZ] (JDW	UB412	HALAIFA (HLF) RABIGH (RBG) [KING ABDULAZIZ] (JDW
B413	LADEN 1853.7N 03805.1E DANAK 1608.0N 04129.0E HODEIDAH TAIZ ADEN ZIZAN 1151.6N 04539.2E AVIMO 0332.9N 05052.6E	UB413	LADEN 1853.7N 03805.1E DANAK 1608.0N 04129.0E HODEIDAH TAIZ ADEN ZIZAN 1151.6N 04539.2E AVIMO 0332.9N 05052.6E
B415	DOHA HAMAD INT (DOH) 251459N 0513634E *Note 8 (DOH-BUNDU) KUPSA 250445N 0521151E BUNDU 250024N 0522924E *Note 7 (BUNDU-ADV) LAGMI 245709N 0524148E GADVO 2441264N 0534300E KUNGU 243754N 05356.274E ABU DHABI ADV 242508N 0544024E	UB415	DOHA HAMAD INT (DOH) 251459N 0513634E *Note 8 (DOH-BUNDU) KUPSA 250445N 0521151E BUNDU 250024N 0522924E *Note 7 (BUNDU-ADV) LAGMI 245709N 0524148E GADVO 2441264N 0534300E KUNGU 243754N 05356.274E ABU DHABI ADV 242508N 0544024E
B416	KUWAIT (KUA) AMBIK 283222N 0492025E *Note 8 (AMBIK-KUVER) TESSO 282852N0492723E GEVAL 282101N 0494300E GOGMA 281421N 0495612E KUVER 280924N 0500600E IMDAT 274100N 0511100E ORSAR 260430N 0535730E PEBAT 255153N 0542357E DESDI 253603N 0544230E	UB416	KUWAIT (KUA) AMBIK 283222N 0492025E *Note 8 (AMBIK-KUVER) TESSO 282852N0492723E GEVAL 282101N 0494300E GOGMA 281421N 0495612E KUVER 280924N 0500600E IMDAT 274100N 0511100E ORSAR 260430N 0535730E PEBAT 255153N 0542357E DESDI 253603N 0544230E

LOWER AIRSPACE

UPPER AIRSPACE

Designator 1	Significant Points 2
B417	MAHSHAHR (MAH) TULAX 2938 53N 04903 01E DESLU 2928.0N 04901.8E ALVIX 2919.3N04824.2E KUWAIT (KUA) *See Note 3 HAFR AL BATIN (HFR) KMC GASSIM (GAS) BIR-DARB (BDB) TAGNA 231652N 0403851E KING ABDULAZIZ (JDW)
B419	(DHA) 261538N 0500824E * Note 8 (DHA-RAMSI) KING FAHD (KFA) * Note 7 (KFA-RAMSI) METLA 265645N 0500432E RAMSI 270249N 0500714E
B424	ITOLI 152825N 0450927E SABEL 185200N 05203.7E OTISA 201000N 0554556E GISKA 213503N 0574014E
B441	MASHHAD (MSD) OTRUZ 363108N 0610956E MARAD 3637.6N 06127.8E
B451	DEHNAMAK (DHN) BOJNORD (BRD) DOLOS 375006N 0580200E (ASHGABAT) (ASB)
B457	NARMI 261802N 0501939E BAH 261551N 0503855E DENVO 260452N 0510509E PATOM 255821N 0511836E EMISA 254658N 0514206E
B505	LALDO 251806N 0563600E * Note 7/8 (OO) NADSO 244957N 0574926E ITLOB 244325N 0590701E EGTAL 2434 58N 06037 24E APELO 2434.9N 0612000E PASNI (PI) 2517.3N 06320.9E

Designator 1	Significant Points 2
UB417	MAHSHAHR (MAH) TULAX 2938 53N 04903 01E DESLU 2928.0N 04901.8E ALVIX 2919.3N04824.2E KUWAIT (KUA) *See Note 3 HAFR AL BATIN (HFR) KMC GASSIM (GAS) BIR-DARB (BDB) TAGNA 231652N 0403851E KING ABDULAZIZ (JDW)
UB419	(DHA) 261538N 0500824E * Note 8 (DHA-RAMSI) KING FAHD (KFA) * Note 7 (KFA-RAMSI) METLA 265645N 0500432E RAMSI 270249N 0500714E
UB424	ITOLI 152825N 0450927E SABEL 185200N 05203.7E OTISA 201000N 0554556E GISKA 213503N 0574014E
UB441	MASHHAD (MSD) OTRUZ 363108N 0610956E MARAD 3637.6N 06127.8E
UB451	DEHNAMAK (DHN) BOJNORD (BRD) DOLOS 375006N 0580200E (ASHGABAT) (ASB)
UB457	NARMI 261802N 0501939E BAH 261551N 0503855E DENVO 260452N 0510509E PATOM 255821N 0511836E EMISA 254658N 0514206E

LOWER AIRSPACE

UPPER AIRSPACE

Designator 1	Significant Points 2	Designator 1	Significant Points 2
B524	NADSO 244957N 0574926E * Note 7 DAMUM 243236N 0591307E VEKAN 241235N 0604454E ALPOR 2404 42N 06120E		
B526	(ASMARA) ASM HODEIDAH (HDH) MUKALLA (RIN) RIGAM 143932N 0530414E	UB526	(ASMARA) ASM HODEIDAH (HDH) MUKALLA (RIN) RIGAM 143932N 0530414E
B535	(DJIBOUTI) DTI ADEN (KRA) MUKALLA (RIN) KAPET 1633 22N 0530614E SALALAH (SLL) ASTUN 180832N0551040E	UB535	(DJIBOUTI) DTI ADEN (KRA) MUKALLA (RIN) KAPET 1633 22N 0530614E SALALAH (SLL) ASTUN 180832N0551040E
B538	ALEPPO KARIATAIN	UB538	ALEPPO KARIATAIN
B540	GERAR 240600N 0573616 PASOV 243841N 0565037E KUPMA 245148N 0562648E BUBIN 245742N 0560642E		
B544	(GAZIANTEP) GAZ ALEPPO (ALE) TANF (TAN) NAMBO 331826N0383939E SODAR 315532N0384317E TURAIF (TRF) AL SHIGAR (ASH) HALAIFA (HLF) MADINAH (PMA) RABIGH (RBG) KING ABDULAZIZ (JDW) QUNFIDAH (QUN) ABHA (ABH) NOBSU KRA	UB544	(GAZIANTEP) GAZ ALEPPO (ALE) TANF (TAN) NAMBO 331826N0383939E SODAR 315532N0384317E TURAIF (TRF) AL SHIGAR (ASH) HALAIFA (HLF) MADINAH (PMA) RABIGH (RBG) KING ABDULAZIZ (JDW) QUNFIDAH (QUN) ABHA (ABH) NOBSU KRA
B549	THAMUD 171700N 0495500E ITELI 171310N 0502605E GOGRI 170752N 0510857E TONRO 165850N 0522235E PUTRA 165432N 0525631E LADAR 165324N 0534655E	UB549	THAMUD 171700N 0495500E ITELI 171310N 0502605E GOGRI 170752N 0510857E TONRO 165850N 0522235E PUTRA 165432N 0525631E LADAR 165324N 0534655E

LOWER AIRSPACE

UPPER AIRSPACE

Designator 1	Significant Points 2	Designator 1	Significant Points 2
	MUTVA 165325N 0543201E KIVEL 165306N 0553633E		MUTVA 165325N 0543201E KIVEL 165306N 0553633E
G183	(KAROL 3252.0N 03229.0E) PASOS EL ARISH (ARH) TABA (TBA)		
G202	(VELOX 3349.0N 03405.0E) SILKO 3347.9N 03435.0E KHALDEH (KAD) * Note 4 (OS) DAKWE 3338.9N 03555.0E DAMASCUS (DAM) TANF (TAN) MODIK 3328.1N 03901.0E RAPLU 3323.0N 04145.5E PUSTO 3321.0N 04245.0E DELM I 331918.31N 0431327.59E LAGLO 331538N 0441457E ITOVA 331950.91N 0444128.97E RAGET 3330.8N 04553.8E ILAM (ILM) KHORAM ABAD (KRD) ESFAHAN (ISN) NODLA BIRJAND (BJD) (KAMAR 3239.0N 06044.0E)	UG202	(VELOX 3349.0N 03405.0E) SILKO 3347.9N 03435.0E KHALDEH (KAD) * Note 4 (OS) DAKWE 3338.9N 03555.0E DAMASCUS (DAM) TANF (TAN) MODIK 3328.1N 03901.0E RAPLU 3323.0N 04145.5E PUSTO 3321.0N 04245.0E DELM I 331918.31N 0431327.59E LAGLO 331538N 0441457E ITOVA 331950.91N 0444128.97E RAGET 3330.8N 04553.8E ILAM (ILM) KHORAM ABAD (KRD) ESFAHAN (ISN) NODLA BIRJAND (BJD) (KAMAR 3239.0N 06044.0E)
G208	(PANJGUR) PG KEBUD 2735.9N 06250.4E ZAHEDAN (ZDN) DARBAND (DAR) NODLA 325330N 0545850E ANARAK (ANK) TEHRAN (TRN) ZANJAN (ZAJ) UROMIYEH (UMH) ALRAM 3743.0N 04437.0E (SIIRT)		
G216	LAKLU 232235N 0570401E *Note 7 (OO/OP) Muscat (MCT) ITILA 234055N 0584817E SODEB 234747N 0593023E DORAB 235033N 0594746E ALPOR 240441N 0612000E LATEM	UG216	LAKLU 232235N 0570401E *Note 7 (OO/OP) Muscat (MCT) ITILA 234055N 0584817E SODEB 234747N 0593023E DORAB 235033N 0594746E ALPOR 240441N 0612000E LATEM

LOWER AIRSPACE

UPPER AIRSPACE

Designator 1	Significant Points 2	Designator 1	Significant Points 2
	(KC)		(KC)
G452	SHIRAZ (SYZ) KERMAN (KER) ZAHEDAN (ZDN) DERBO 2925.7N 06117.0E (RAHIMYAR KHAN) RK	UG452	SHIRAZ (SYZ) KERMAN (KER) ZAHEDAN (ZDN) DERBO 2925.7N 06117.0E (RAHIMYAR KHAN) RK
G462	ROVOS 241825N 0552143E Note 7 to ITROK NIBAX 245748N 0541437E RAGTA 250850N 0535840E ALSOK 252607N 0533904E ITROK 253557N 0532751E TUMAK 255031N 0531108E	UG462	ROVOS 241825N 0552143E Note 7 to ITROK NIBAX 245748N 0541437E RAGTA 250850N 0535840E ALSOK 252607N 0533904E ITROK 253557N 0532751E TUMAK 255031N 0531108E
G650	KING ABDULAZIZ (JDW) RASKA 190732N 0390329E ASMARA (ASM)	UG650	KING ABDULAZIZ (JDW) RASKA 190732N 0390329E ASMARA (ASM)
G652	ADEN (KRA) IMPOS 183136N 0511848E DUDRI 190000N 0520000E *Note 8 (DUDRI-TOKRA) TOKRA 220925N 0553350E TAPDO 2424N 06120 E	UG652	ADEN (KRA) IMPOS 183136N 0511848E DUDRI 190000N 0520000E *Note 8 (DUDRI-TOKRA) TOKRA 220925N 0553350E TAPDO 2424N 06120 E
G660	(PORT SUDAN) PSD BOGUM 2006.6N 03803.0E MIPOL 203322N 0382145E KING ABDULAZIZ (JDW)	UG660	(PORT SUDAN) PSD BOGUM 2006.6N 03803.0E MIPOL 203322N 0382145E KING ABDULAZIZ (JDW)
G662	BUSRA 322000N 0363700E KUPRI 320825.87N 0364530.21E ALKOT 313254.22N 0371121.51E GRY 3124.8N 3717.2E AL SHIGAR (ASH) HAIL (HIL) GASSIM (GAS) KING KHALID (KIA)	UG662	BUSRA 322000N 0363700E KUPRI 320825.87N 0364530.21E ALKOT 313254.22N 0371121.51E GRY 3124.8N 3717.2E AL SHIGAR (ASH) HAIL (HIL) GASSIM (GAS) KING KHALID (KIA)
G663	KING KHALID (KIA) SILNO 264024N 0475742E *Note 7 (KIA-KFA) GIBUS 255724N 0472829E *Note 8 (GIBUS-ALSER) KING FAHD (KFA) ULADA 264526N 0501623E LOTOR 264854N 0502200E	UG663	KING KHALID (KIA) SILNO 264024N 0475742E *Note 7 (KIA-KFA) GIBUS 255724N 0472829E *Note 8 (GIBUS-ALSER) KING FAHD (KFA) ULADA 264526N 0501623E LOTOR 264854N 0502200E

LOWER AIRSPACE

UPPER AIRSPACE

Designator 1	Significant Points 2
	RAKAK 265221N 0502618E TOLMO 265504N 0502927E KOBOK 265839N 0503349E ITIXA 270141N 0503735E GETAL 270409N 0504039E VEDOR 270855N 0504630E ALSER 271100N 0504900E SHIRAZ (SYZ) YAZD (YZD) NODLA 325318N 0545848E TABAS (TBS) MASHAD (MSD)
G665	ARAR (AAR) ABADAN (ABD) SHIRAZ (SYZ) * Note 5 (OI) NABOD 2816.1N 05825.8E LOXOL 2745.9N 06045.6E ASVIB 265724N 0631812E (PANJGUR) PG
G666	SHIRAZ (SYZ) LAMERD (LAM) LAVAN (LVA) * Note 7 (OI) ORSAR 2604 .5N 05357.5E ITITA 254410N 0541839E SINBI 250842N 0543741E ABU DHABI (ADV)
G667	PUTMA 3748.0N 05157.6E NOSHAHR (NSR) TEHRAN (TRN) SAVEH (SAV) MIS AHWAZ (AWZ) ABADAN (ABD) ALSAN 295707N 0481456E FALKA KUWAIT (KUA) WAFRA (KFR) *Note 7 (KFR-MGA) COPPI 275033N 0474359E *Note 8 (COPPI-AVOBO) EMENI 273232N 0473849E MUSKO 272640N 0473708E ALSAT 270611N 0473118E LUGAL 264533N 0472528E

Designator 1	Significant Points 2
	RAKAK 265221N 0502618E TOLMO 265504N 0502927E KOBOK 265839N 0503349E ITIXA 270141N 0503735E GETAL 270409N 0504039E VEDOR 270855N 0504630E ALSER 271100N 0504900E SHIRAZ (SYZ) YAZD (YZD) NODLA 325318N 0545848E TABAS (TBS) MASHAD (MSD)
UG665	ARAR (AAR) ABADAN (ABD) SHIRAZ (SYZ) * Note 5 (OI) NABOD 2816.1N 05825.8E LOXOL 2745.9N 06045.6E ASVIB 265724N 0631812E (PANJGUR) PG
UG666	SHIRAZ (SYZ) LAMERD (LAM) LAVAN (LVA) * Note 7 (OI) ORSAR 2604 .5N 05357.5E ITITA 254410N 0541839E SINBI 250842N 0543741E ABU DHABI (ADV)
UG667	PUTMA 3748.0N 05157.6E NOSHAHR (NSR) TEHRAN (TRN) SAVEH (SAV) MIS AHWAZ (AWZ) ABADAN (ABD) ALSAN 295707N 0481456E FALKA KUWAIT (KUA) WAFRA (KFR) *Note 7 (KFR-MGA) COPPI 275033N 0474359E *Note 8 (COPPI-AVOBO) EMENI 273232N 0473849E MUSKO 272640N 0473708E ALSAT 270611N 0473118E LUGAL 264533N 0472528E

LOWER AIRSPACE

UPPER AIRSPACE

Designator 1	Significant Points 2	Designator 1	Significant Points 2
	MAGALA (MGA) AVOBO 260334N 0470719E KING KHALID (KIA) WADI AL DAWASIR (WDR) NEJLAN (NEJ) SANA'A (SAA) PARIM 123142.7N 0432712E DJIBOUTI (DTI)		MAGALA (MGA) AVOBO 260334N 0470719E KING KHALID (KIA) WADI AL DAWASIR (WDR) NEJLAN (NEJ) SANA'A (SAA) PARIM 123142.7N 0432712E DJIBOUTI (DTI)
G669	AL SHIGAR (ASH) AL JOU (AJF) RAFHA (RAF) NISER 2930.5N 04418.4E *Note 3 (OK) SOLAT 290942N 0463810E KUWAIT (KUA) SESRA 290803N 0485453E NANPI 290457N 0493157E KHARK(KHG) SHIRAZ (SYZ)	UG669	AL SHIGAR (ASH) AL JOU (AJF) RAFHA (RAF) NISER 2930.5N 04418.4E *Note 3 (OK) SOLAT 290942N 0463810E KUWAIT (KUA) SESRA 290803N 0485453E NANPI 290457N 0493157E KHARK(KHG) SHIRAZ (SYZ)
G670	RASHT (RST) LALDA 3817.1N 04943.0E (BAKU) GYD	UG670	RASHT (RST) LALDA 3817.1N 04943.0E (BAKU) GYD
G674	MADINAH (PMA) GASSIM (GAS) 2617.9N 04346.8E BOPAN (BPN)	UG674	MADINAH (PMA) GASSIM (GAS) 2617.9N 04346.8E BOPAN (BPN)
G775	(ASHGHABAT) (ASB) ORPAB 3742N 05834.5E MASHHAD (MSD) [BIRJAND] (BJD) * Note 1 ZAHEDAN (ZDN)	UG775	(ASHGHABAT) (ASB) ORPAB 3742N 05834.5E MASHHAD (MSD) [BIRJAND] (BJD) * Note 1 ZAHEDAN (ZDN)
G781	(VAN) BONAM 3802.9N 04418.0E UROMIYEH (UMH) ROVON 3716 01N 0455322E ZANJAN (ZAJ) NOSHAHR(NSR)	UG781	(VAN) BONAM 3802.9N 04418.0E UROMIYEH (UMH) ROVON 3716 01N 0455322E ZANJAN (ZAJ) NOSHAHR(NSR)
G782	KING ABDULAZIZ (JDW) DAFINAH (DFN) RAGA\HBA (RGB) KING KHALID (KIA) MAGALA (MGA) *Note 7 (MGA-KFR)	UG782	KING ABDULAZIZ (JDW) DAFINAH (DFN) RAGA\HBA (RGB) KING KHALID (KIA) MAGALA (MGA) *Note 7 (MGA-KFR)

LOWER AIRSPACE

UPPER AIRSPACE

Designator 1	Significant Points 2	Designator 1	Significant Points 2
	LUGAL 264533N 0472528E WAFRA (KFR) 283715N 0475729E KUWAIT (KUA)		LUGAL 264533N 0472528E WAFRA (KFR) 283715N 0475729E KUWAIT (KUA)
G783	PURDA 210805N 0510329E TANSU 224136N 0542828E RIGIL 230146N 0551430E ELUDA 235107N 0552905E ALN 241535N 0553623E GIDIS 243600N 055600E BUBIN 245742N 0560642E	UG783	PURDA 210805N 0510329E TANSU 224136N 0542828E RIGIL 230146N 0551430E ELUDA 235107N 0552905E ALN 241535N 0553623E GIDIS 243600N 055600E BUBIN 245742N 0560642E
G792	BODKA 3939.0N 05130.0E GIRUN 3806.2N 05620.3E BOJNORD (BRD) MASHAD (MSD)	UG792	BODKA 3939.0N 05130.0E GIRUN 3806.2N 05620.3E BOJNORD (BRD) MASHAD (MSD)
G795	FALKA 2926.2N 04818.3E TASMI 300120N 0475505E BSR 303132.4N 0472112E RAFHA (RAF)	UG795	FALKA 2926.2N 04818.3E TASMI 300120N 0475505E BSR 303132.4N 0472112E RAFHA (RAF)
G799	PMA DAFINAH (DFN)	UG799	PMA DAFINAH (DFN)
		UL124	(VAN) BONAM URUMIYEH (UMH) ZANJAN (ZAJ) SAVEH (SAV) DISEL 332904N 0510118E YAZD (YZD) (R654) KERMAN (KER) KEBUD 273558N 0625028E (PANJGUR) PG
		UL125	DULAV 3857N 04537.9E TABRIZ (TBZ) ZANJAN (ZAJ) PAROT 360940N 0495756E TEHRAN (TRN) ANARAK (ANK) DARBAND (DAR) ZAHEDAN (ZDN) DANIB 290706N 0611717E KEBUD 273558N 0625028E
L126	PUSTO 3321.0N 04245.0E SOGUM 3412.2N 04354.9E	UL126	PUSTO 3321.0N 04245.0E SOGUM 3412.2N 04354.9E

LOWER AIRSPACE

UPPER AIRSPACE

Designator 1	Significant Points 2
	SIGNI 3400.1N 04442.2E MIGMI 3345.9N 04527.4E ILAM (ILM)
L200	AMMAN LOXER 320256N 362500E LUDAN 320256N 0363713 E KUPRI 320825N 0364530 E ASLON 321211N 0365111E NADEK 322728N 0371429E DAXEN 324444N 0374105E ORNAL 324755N0375153E KAREM 325110N 0380324 E KUMLO 325811N 0382807 E DAPUK 330139N 0384026 E PASIP 330600N 0385600E GIBUX 330715N 0411625E SIGBI 330200N 0422000E SILBO 325900N 0432900E
L223	SIRRI (SIR) NALTA 250242N 0553955E * Note 7 (OI-OM-OO) TARDI 243418N 0560915E LAKLU 232235N 05704 01E
L300	LUXOR (LXR) MEMPO 252518N 0335457E GIBAL2437.2N03634.7E YENBO (YEN) 2408.8N 03803.9E
L301	RASKI 230330N 0635200E VAXIM 231900N 0611100E RAGMA 232301N 0603846E
L305	DOHA HAMAD INTL (DOH) 251459N 0513634E ORMAL 252303N 0522200E ENANO 252348N 0522558E ALSEM 252703N 0524322E

Designator 1	Significant Points 2
	SIGNI 3400.1N 04442.2E MIGMI 3345.9N 04527.4E ILAM (ILM)
UL200	AMMAN LOXER 320256N 362500E LUDAN 320256N 0363713 E KUPRI 320825N 0364530 E ASLON 321211N 0365111E NADEK 322728N 0371429E DAXEN 324444N 0374105E ORNAL 324755N0375153E KAREM 325110N 0380324 E KUMLO 325811N 0382807 E DAPUK 330139N 0384026 E PASIP 330600N 0385600E GIBUX 330715N 0411625E SIGBI 330200N 0422000E SILBO 325900N 0432900E
UL223	DASIS 385430N 0441230E UROMIYEH (UMH) SANANDAJ (SNJ) KHORAM ABAD (KRD) MESVI 312920N 0495701E LAMERD (LAM) SIRRI (SIR) * Note 7 (OI-OM-OO) NALTA 250242N 0553955E TARDI 243418N 0560915E LAKLU 232235N 05704 01E
UL300	LUXOR (LXR) MEMPO 252518N 0335457E GIBAL2437.2N03634.7E YENBO (YEN) 2408.8N 03803.9E
UL301	AAU 5153N 07523 38.6E NOBAT 210902.5N 0880000.1E LADOT 220502N 0660001 RASKI 230330N 0635200E VAXIM 231900N 0611100E RAGMA 232301N 0603846E
UL305	DOHA HAMAD INTL (DOH) 251459N 0513634E ORMAL 252303N 0522200E ENANO 252348N 0522558E ALSEM 252703N 0524322E

LOWER AIRSPACE

UPPER AIRSPACE

Designator 1	Significant Points 2	Designator 1	Significant Points 2
	ASTOG 252822N 0525025E *Note 7 (DOH-ITITA) *Note 8 (DOH-ASTOG) ITITA 254410N 0541839E		ASTOG 252822N 0525025E *Note 7 (DOH-ITITA) *Note 8 (DOH-ASTOG) ITITA 254410N 0541839E
L306	TOKRA 220925N 0553350E * Note- 7 (OO) DEMKI 224941N 0562308E LAKLU 232235N 0570401E	UL306	TOKRA 220925N 0553350E * Note- 7 (OO) DEMKI 224941N 0562308E LAKLU 232235N 0570401E
L308	EGNOV 270301N 0474713E *Note 7 (EGNOV- SERSA) *Note 8 (EGNOV- OBNET) (JBL) 270220N 0492427E RAMSI 270249N 0500714E GASSI 2702.9N 05022.5E TOSDA 270005N 0505629E TORBO 265223N 0511024E SOGAN 263915N 0515408E DEGSO 261054N 0531946E OBNET 260032N 0534514E ITITA 254410N 0541839E DESDI 253603N 0544230E RAGOL 252743N 0550739E SERSA 251945N 0553118E TUKLA 251936N 0554010E NADNI 251915N 0555658E LALDO 251806N 0563600E IMLOT 2517.1N 05708.1E KATUS 2515.9N 05747.0E DIVAB 2510.7N 05952.1E EGPIC 2508.6N 06029.5E (JIWANI) LATEM 2431.7N 06449.7E	UL308	EGNOV 270301N 0474713E *Note 7 (EGNOV- SERSA) *Note 8 (EGNOV- OBNET) (JBL) 270220N 0492427E RAMSI 270249N 0500714E GASSI 2702.9N 05022.5E TOSDA 270005N 0505629E TORBO 265223N 0511024E SOGAN 263915N 0515408E DEGSO 261054N 0531946E OBNET 260032N 0534514E ITITA 254410N 0541839E DESDI 253603N 0544230E RAGOL 252743N 0550739E SERSA 251945N 0553118E TUKLA 251936N 0554010E NADNI 251915N 0555658E LALDO 251806N 0563600E IMLOT 2517.1N 05708.1E KATUS 2515.9N 05747.0E DIVAB 2510.7N 05952.1E EGPIC 2508.6N 06029.5E (JIWANI) LATEM 2431.7N 06449.7E
L310	BOXAK 244536N 0540032E *Note 7 & 8 to LALDO SIGBO 2455.4N 05456.9E NALTA 2502.7N 05539.8E AVAMI 2505.9N 05556.8E LALDO 251806N 0563600E	UL310	BOXAK 244536N 0540032E *Note 7 & 8 to LALDO SIGBO 2455.4N 05456.9E NALTA 2502.7N 05539.8E AVAMI 2505.9N 05556.8E LALDO 251806N 0563600E
L314	NABAN 163124N 0430148E GOMRI 131816N 0443224E	UL314	NABAN 163124N 0430148E GOMRI 131816N 0443224E
L315	CAIRO(CVO) HURGHADA (HGD) GIBAL 2437.2N 03634.7E	UL315	CAIRO(CVO) HURGHADA (HGD) GIBAL 2437.2N 03634.7E

LOWER AIRSPACE

UPPER AIRSPACE

Designator 1	Significant Points 2
L319	BAH 261551N 0503855E DAVRI 264936N 0505731E OBTAR 265934N 0510309E
L321	KATAB 292501N 0290506E KUNKI 290726N 0291949E KUNAK 2527.7N 03041.2E LUGAV 224205N 0313722E SML 222118N 0313719E
L417	VUSEB 361637N 0434800E UMESA 351741N 0434307E MUTAG 343003N 0433834 E LAGLO 3515.6 04414.0E ELOSI 330800N 0441800E LOVEK 3222.1N 04440.0E ELIBA 320915N 0444645E NADOX 310505N 0451851E

Designator 1	Significant Points 2
UL319	BAH 261551N 0503855E DAVRI 264936N 0505731E OBTAR 265934N 0510309E
UL321	KATAB 292501N 0290506E KUNKI 290726N 0291949E KUNAK 2527.7N 03041.2E LUGAV 224205N 0313722E SML 222118N 0313719E
UL322	MUMBAI (BBB) * Note 7&1 SUGID 1933.1N 06921.0E BOLIS 2033.5N 065 00.0E REXOD 2112.5N 06138.5E
UL333	DASIS TABRIZ (TBZ) RASHT (RST) GIBAB 3537.0N 05430.9E ALRAS 3511.3N 05541.6E TASLU 342632N 0574234E SOKAM 331316N 0603752E
UL417	VUSEB 361637N 0434800E UMESA 351741N 0434307E MUTAG 343003N 0433834 E LAGLO 3515.6 04414.0E ELOSI 330800N 0441800E LOVEK 3222.1N 04440.0E ELIBA 320915N 0444645E NADOX 310505N 0451851E
UL425	KING ABDULAZIZ (JDW) TONBO 205502N 0394911E AL BAHA (BHA) BISHA (BSH) WADI AL DAWASIR (WDR) EGREN 202236N 0464422E ASTIN 200410N 0495320E DIRAS 195235N 0513704E GOBRO 193622N 0534741E NOVNO 193313N 0535858E ITUVO 190315N 0554328E DEDSO 185811N 0560041E BOVOS 182230N 0575844E ASPUX 174406N 0600006E (TRIVANDRUM)

LOWER AIRSPACE

UPPER AIRSPACE

Designator 1	Significant Points 2
L430	VAXIM 231900N 0611100E MESPO 244936N 0593411E MELMI 264625N 0572300E TAVNO 281112N 0563252E ASMET 284827N 0560806E SRJ 2933.4N 05539.6E
L438	LONOS 283027N 0491713E LOPOL 281849N 0492845E ATBAG 280842N 0493844E GODRI 280256N 0494307E RAKSO 275326N 0495032E GOGRA 274918N 0495344E OBNAX 272650N 0501103E DEKTA 271605N 0501946E VELOG 270215N 0503055E KOBOK 265839N 0503349E MOGAS 264759N 0503909E TOSTA 262746N 0504912E ASTAD 261811N 0505646E
L440	KANIP 2410.7N 05520.7E *Note 7 RETAS 235754N 0553423E
L443	RABAP 283625N 0492722 TESSO 282852N 0492723E LOPOL 281849N 0492845E ENAVI 275552N 0493151E GIRSI 274126N 0493310E ORDAN 271706N 0495442E RAMSI 270249N 0500714E GASSI 270257N 0502229E
L444	KIPOL 230410N 0612903E *Note 7 (OO) VUSIN 225940N 0605510E MIBSA 225400N 0601338E KAXEM 225103N 0595243E IMDEK 224647N 0592217E TOLDA 224008N 0583624E
L513	MURAK 3459.4N 03642.1E LEBOR 3415.9N 03635.0E DAMASCUS (DAM) * Note 3 (OS) BUSRA 3220.0 N 03637.0 E QUEEN ALIA (QAA) QATRANEH (QTR)

Designator 1	Significant Points 2
UL430	VAXIM 231900N 0611100E MESPO 244936N 0593411E MELMI 264625N 0572300E TAVNO 281112N 0563252E ASMET 284827N 0560806E SRJ 2933.4N 05539.6E
UL438	LONOS 283027N 0491713E LOPOL 281849N 0492845E ATBAG 280842N 0493844E GODRI 280256N 0494307E RAKSO 275326N 0495032E GOGRA 274918N 0495344E OBNAX 272650N 0501103E DEKTA 271605N 0501946E VELOG 270215N 0503055E KOBOK 265839N 0503349E MOGAS 264759N 0503909E TOSTA 262746N 0504912E ASTAD 261811N 0505646E
UL440	KANIP 2410.7N 05520.7E *Note 7 RETAS 235754N 0553423E
UL443	RABAP 283625N 0492722 TESSO 282852N 0492723E LOPOL 281849N 0492845E ENAVI 275552N 0493151E GIRSI 274126N 0493310E ORDAN 271706N 0495442E RAMSI 270249N 0500714E GASSI 270257N 0502229E
UL444	KIPOL 230410N 0612903E *Note 7 (OO) VUSIN 225940N 0605510E MIBSA 225400N 0601338E KAXEM 225103N 0595243E IMDEK 224647N 0592217E TOLDA 224008N 0583624E
UL513	MURAK 3459.4N 03642.1E LEBOR 3415.9N 03635.0E DAMASCUS (DAM) * Note 3 (OS) BUSRA 3220.0 N 03637.0 E QUEEN ALIA (QAA) QATRANEH (QTR)

LOWER AIRSPACE

UPPER AIRSPACE

Designator 1	Significant Points 2	Designator 1	Significant Points 2
	MAZAR 3048.0N 03610.0E		MAZAR 3048.0N 03610.0E
		UL516	KITAL 2003.0N 06018.0E ELKEL 0149.0N 06911.0E DIEGO GARCIA (NDG)
L519	ABU DHABI (ADV) *Note 7 (OM) NAMSI 2437.5N 05456.8E EMERU 244829N 0550303 LUDER 2457.5N 05505.2E	UL519	ABU DHABI (ADV) *Note 7 (OM) NAMSI 2437.5N 05456.8E EMERU 244829N 0550303 LUDER 2457.5N 05505.2E
		UL550	WAFRA (KFR) NIDAP 283850N 0473656E BOSID 2842.4N 04652.6E VATIM 2851.6N 04444.7E RASMO 2857.2N 04331.3E ORSAL2902.8N 04210.8E NIMAR 2906.6N 03954.4E KITOT 2902.1N 03450.8E NUWEIBAA (NWB) TABA (TBA) EL ARISH (ARH) PASOS (KAROL 3252.0N 03229.0E)
L551	ANTAR 334800N 0281600E EL DABA (DBA) 310041N 0282801E	UL551	ANTAR 334800N 0281600E EL DABA (DBA) 310041N 0282801E
L555	TOTOX 215030N 0622230E TUMET 222307N 0595702E TOLDA 224008N 0583624E	UL555	TOTOX 215030N 0622230E TUMET 222307N 0595702E TOLDA 224008N 0583624E
		UL556	EGREN 202236N 0464422E NONGA 205048N 0492014E PURDA 210805N 0510329E Note:- 7 (OO, OB) IMDAM 202416N 0550801E OTISA 201000N 0554556E HAIMA (HAI) 195813N 0561651E GIVNO 195011N 0563059E KUTVI 184306N 0582642E
		UL560	ARDABIL (ARB) 3819.9N 04824.9E * Note 3&4 (OI) SEVAN (SVN) 4032.0N 04456.9E
L564	DOHA/HAMAD INTL	UL564	DOHA/HAMAD INTL

LOWER AIRSPACE

UPPER AIRSPACE

Designator 1	Significant Points 2
(DOH)	251459N 0513634E
PASOM	245545N 0513713E
DATRI	244239N 0513407E
DENSI	242519N 0512959E
*Note 8 (DOH-PURDA)	
BATHA (BAT)	241257N 0512707E
MIGMA	225035N 0512749E
LOTOS	220000N 0503912E
ALNUG	213009N 0500453E
NONGA	205048N 0492012E
DENKU	201123N 0484331E
GERUG	185530N 0473402E
ASKET	181905N 0470113E
PATOG	180241N 0464631E
VUVOD	173941N 0463200E
TULIS	173033N 0462616E
ULBON	171425N 0461515E
RAGNI	163454N 0454815E
LOPAD	161651N 0453738E
ITOLI	152825N 0450927E
OBNAM	144541N 0444448E
GEVEL	141229N 0442547E
NOPVO	135436N 0441536E
TAZ	134150N 0440819E
PARIM	123142N 0432712E

Designator 1	Significant Points 2
(DOH)	251459N 0513634E
PASOM	245545N 0513713E
DATRI	244239N 0513407E
DENSI	242519N 0512959E
*Note 8 (DOH-PURDA)	
BATHA (BAT)	241257N 0512707E
MIGMA	225035N 0512749E
LOTOS	220000N 0503912E
ALNUG	213009N 0500453E
NONGA	205048N 0492012E
DENKU	201123N 0484331E
GERUG	185530N 0473402E
ASKET	181905N 0470113E
PATOG	180241N 0464631E
VUVOD	173941N 0463200E
TULIS	173033N 0462616E
ULBON	171425N 0461515E
RAGNI	163454N 0454815E
LOPAD	161651N 0453738E
ITOLI	152825N 0450927E
OBNAM	144541N 0444448E
GEVEL	141229N 0442547E
NOPVO	135436N 0441536E
TAZ	134150N 0440819E
PARIM	123142N 0432712E
UL566	ASMAK 162327N 0524634E UKNEN 160542N 0522012E PURUG 151204N 0510142E KUSOL 144009N 0501534E NOTBO 142609N 0495530E EMABI 141627N 0494139E SOKEM 134235N 0485329E DATEG 123549N 0471627E
UL572	KAMISHLY (KML) LESRI 3704.3N 04113.8E HASSAKEH (HAS) 3629N 04045.3E DIER ZZOR (DRZ) TANF (TAN)
UL573	DAFINAH (DFN) 231658N 0414310E PMA WEJH (WEJ) 261045N 0362917E
UL601	BAGLUM (BAG) 04004.2 03248.6) * Note 7 ADANA 3656.4N 03512.6E (ADA)

LOWER AIRSPACE

UPPER AIRSPACE

Designator 1	Significant Points 2
L602	TUMAK 255031N 0531108E VEDOM 260109N 0524456E VELAK 261307N 0521821E LABOP 261907N 0520429E ALTOM 262230N 0515639E DASOS 262429N 0515043E ALMOK 262832N 0513840E VEDOS 264105N 0510044E NABOS 264354N 0505145E MEMKO 264611N 0504427E MOGAS 264759N 0503909E TOLMO 265504N 0502927E EGLIT 270255N 0502005E TOKMA 270938N 0501159E ORSOL 272135N 0500207E ITNAS 274643N 0493957E ENAVI 275552N 0493151E DAMUR 280137N 0492637E DAVUS 282346N 0490622E
L604	PLH 351339N 0234051E SALUN 340000N 0242700E BRN 313430N 0260018E KHG 252654N 0303524E LUXOR (LXR) 254458 N 0324607E IMRAD 260506N 0354444E WEJH(WEJ) 261048N 0362918E HLF 262600N 03916.06E GASSIM (GAS) 261754N 0434648E *Note 7 (GAS-KFA) PUSLA 261758N 0461706E *Note 8 to TOSNA MGA 261718N 0471224E ALMAL 261554N 0482106E KING FAHD (KFA) 262154N 0494912E NARMI 261802N 0501939E

Designator 1	Significant Points 2
	TUNLA 3553.0N 0360200E) KARIATAIN 3412.8N 03715.9E
UL602	TUMAK 255031N 0531108E VEDOM 260109N 0524456E VELAK 261307N 0521821E LABOP 261907N 0520429E ALTOM 262230N 0515639E DASOS 262429N 0515043E ALMOK 262832N 0513840E VEDOS 264105N 0510044E NABOS 264354N 0505145E MEMKO 264611N 0504427E MOGAS 264759N 0503909E TOLMO 265504N 0502927E EGLIT 270255N 0502005E TOKMA 270938N 0501159E ORSOL 272135N 0500207E ITNAS 274643N 0493957E ENAVI 275552N 0493151E DAMUR 280137N 0492637E DAVUS 282346N 0490622E DARVA 284814N 0484734E ALVIX 291918N0482412E FALKA 292611N 0481819E TASMI 300120N 0475505E LOVEK322206N 0444000E DELMI331911N 0431731E ELEXI 344237N 0411054E DRZ 351724N 0401124E KUKSI 364508N 0374910E GAZ 365701N 0372824E
UL604	PLH 351339N 0234051E SALUN 340000N 0242700E BRN 313430N 0260018E KHG 252654N 0303524E LUXOR (LXR) 254458 N 0324607E IMRAD 260506N 0354444E WEJH(WEJ) 261048N 0362918E HLF 262600N 03916.06E GASSIM (GAS) 261754N 0434648E *Note 7 (GAS-KFA) PUSLA 261758N 0461706E *Note 8 to TOSNA MGA 261718N 0471224E ALMAL 261554N 0482106E KING FAHD (KFA) 262154N 0494912E NARMI 261802N 0501939E

LOWER AIRSPACE

UPPER AIRSPACE

Designator 1	Significant Points 2	Designator 1	Significant Points 2
	BAHRAIN (BAH) 261551N 0503855E DENVO 260452N 0510509E PATOM 255821N 0511836E EMISA 254658N 0514207E KAPAX 254218N 0515118E ORSIS 252801N 0521636E ENANO 252348N 0522559E TOSNA 251612N 0524116E		BAHRAIN (BAH) 261551N 0503855E DENVO 260452N 0510509E PATOM 255821N 0511836E EMISA 254658N 0514207E KAPAX 254218N 0515118E ORSIS 252801N 0521636E ENANO 252348N 0522559E TOSNA 251612N 0524116E
		UL607	SITIA (SIT) * Note 7 PAXIS 3357.1N02720.0E OTIKO 3134.4N 02936.6E ALEXANDRIA (NOZ)
L612	KUMBI 334250N 0284500E LABNA 321956N 0301612E BALTIM (BLT) 313144N 0310721E	UL612	KUMBI 334250N 0284500E LABNA 321956N 0301612E BALTIM (BLT) 313144N 0310721E
		UL613	EL – DABA (DBA) * Note 7 SOKAL 3236.0N 02720.0E TANSA 3400.0N 02649.0E
L617	ALEXANDRIA NOZ IMRUT 313259N 0293346E ASNIR 323849N 0282144E TANSA 340000N 0264900E	UL617	ALEXANDRIA NOZ IMRUT 313259N 0293346E ASNIR 323849N 0282144E TANSA 340000N 0264900E
L620	BALMA 342856N 0350302E KAD 334827N 0352910E	UL620	BALMA 342856N 0350302E KAD 334827N 0352910E
L631	TOTOX 215030N0622230E IVOMA 223408N 0605430E * Note 7 (OO) MIBSA 225400N 0601338E AMBOS 230324N 0595405E ELIGO 232458N 0590848E KARAR 233042N 0585438E MCT 233528.01N 0581536.47	UL631	TOTOX 215030N0622230E IVOMA 223408N 0605430E * Note 7 (OO) MIBSA 225400N 0601338E AMBOS 230324N 0595405E ELIGO 232458N 0590848E KARAR 233042N 0585438E MCT 233528.01N 0581536.47
L677	(CAIRO) 3005.5N 03123.3E MENLI 2947.0N 03152.1E KAPIT 2917.0N 03236.1E SHARM EL SHEIKH PASAM 2730.8N 03455.7E *Note 7(OE) WEJH 2610.8N 03629.3E MUVAT 2537.9N 03654.8E	UL677	(CAIRO) 3005.5N 03123.3E MENLI 2947.0N 03152.1E KAPIT 2917.0N 03236.1E SHARM EL SHEIKH PASAM 2730.8N 03455.7E *Note 7(OE) WEJH 2610.8N 03629.3E MUVAT 2537.9N 03654.8E

LOWER AIRSPACE

UPPER AIRSPACE

Designator 1	Significant Points 2	Designator 1	Significant Points 2
	YEN 2409.0N 03802.3E JDW 2140.7N 03910.0E QUN 1922.2N 04104.5E TALIB 1838.9N 04131.2E GIZ 1654.5N 04234.7E NABAN 1631.4N 04301.8E IMSIL 1557.6N 04313.2E SAA 1530.0N 04413.2E		YEN 2409.0N 03802.3E JDW 2140.7N 03910.0E QUN 1922.2N 04104.5E TALIB 1838.9N 04131.2E GIZ 1654.5N 04234.7E NABAN 1631.4N 04301.8E IMSIL 1557.6N 04313.2E SAA 1530.0N 04413.2E
L681	EGNOV 270301N 0474713E * Note 5 & 7 & 8 to SALWA GEPAK 2633.0N 04843.5E RADMA 2623.0N 04857.5E DELMU 2618.9N 04903.4E ROSEM 2607.7N 04919.0E SALWA 251538N 0503048E	UL681	EGNOV 270301N 0474713E * Note 5 & 7 & 8 to SALWA GEPAK 2633.0N 04843.5E RADMA 2623.0N 04857.5E DELMU 2618.9N 04903.4E ROSEM 2607.7N 04919.0E SALWA 251538N 0503048E
L695	PAROK 231030N 0590245E *Note 7 (OO) ITURA 232351N 0580720E	UL695	PAROK 231030N 0590245E *Note 7 (OO) ITURA 232351N 0580720E
L764	MUSCAT (MCT) ALMOG 233524N 0574940E IVETO 233520N 0570704E PAXIM 240245N 0561631E	UL764	MUSCAT (MCT) ALMOG 233524N 0574940E IVETO 233520N 0570704E PAXIM 240245N 0561631E
L768	ALPOB 254218N 0530055E * Note 7 to FIRAS * Note 8 (ALPOB-COPPI) ROTAG 255353N 0523621E SOLEG 260159N 0521756E MODOG 261012N 0515935E RAMKI 261138N 0515625E RABLA 261506N 0514834E SOLOB 262241N 0513132E MEDMA 263421N 0505454E TOTLA 263806N 0504301E EGMOR 264211N 0502907E ULADA 264527N 0501624E JBL 270222N 0492426E COPPI 275033N 0474359E	UL768	ALPOB 254218N 0530055E * Note 7 to FIRAS * Note 8 (ALPOB-COPPI) ROTAG 255353N 0523621E SOLEG 260159N 0521756E MODOG 261012N 0515935E RAMKI 261138N 0515625E RABLA 261506N 0514834E SOLOB 262241N 0513132E MEDMA 263421N 0505454E TOTLA 263806N 0504301E EGMOR 264211N 0502907E ULADA 264527N 0501624E JBL 270222N 0492426E COPPI 275033N 0474359E HFR 281950N 0460746E VATIM 285136N 0444442E RAFHA (RAF) 281950N 0460746E ARAR (AAR) 305429N 0410832E OVANO 314801N 0390951E OTILA 320131N 0390153E MODAD 323542N 0384136E SOKAN 330806N 0382206E

LOWER AIRSPACE

UPPER AIRSPACE

Designator 1	Significant Points 2	Designator 1	Significant Points 2
			RAFIF 331248N 0381918E SULAF 332718N 0381024E FIRAS 335218N 0375512E
		UL883	REXOD 211230N 0613830E GADMA 211439N 0600938E TAVKO 211519N 0593147E UMILA 211555N 0584738E MEVLI 211632N 0565606E KUROV 211627N 0561853E ALNUN 211625N 0561041E SITOL 211604N 0552514E PURDA 210805N 0510329E ALRIK 220631N 0482535E UMRAN 2315.1N 04520.4E TUKVU 2346.4N 04353.3E BIR DARB (BDB) PMA N243251N 0394219E
		UL894	KITAL 2003.0N 06018.0E (MALE (MLE) (SUNAN 0028.7N 07800.0E) (DADAR 0200.0S 07927.1E) (PERTH (PH)
M203	PUSTO 3321.0N 04245.0E LOVEK 3222.1N 04440.0E ILMAP 312133N 0465702E	UM203	PUSTO 3321.0N 04245.0E LOVEK 3222.1N 04440.0E ILMAP 312133N 0465702E
M300	LOTAV 2037N 0605700E EMURU 221535N 0584950E	UM300	(CALICUT) CLC LOTAV 2037N 0605700E EMURU 221535N 0584950E
M301	PURAD 145500N 0415354E SANA'A (SAA) ITOLI 152825N 0450927E ASMAK162327N 0524634E	M301	PURAD 145500N 0415354E SANA'A (SAA) ITOLI 152825N 0450927E ASMAK162327N 0524634E
M303	MCT 233528.01N 0581536.47E *Note 7 (OO) SEVLA 233321N 0591122E KIPOL230410N 0612903E	UM303	MCT 233528.01N 0581536.47E *Note 7 (OO) SEVLA 233321N 0591122E KIPOL230410N 0612903E
M305	BRN 3134.5N 02600.3E ATMUL 200000N 2905.4E *Note 3	UM305	BRN 3134.5N 02600.3E ATMUL 200000N 2905.4E *Note 3
		UM309	KIND KHALED (KIA) RAGHBA (RGB)

LOWER AIRSPACE

UPPER AIRSPACE

Designator 1	Significant Points 2	Designator 1	Significant Points 2
			RABTO 221608N 0400326E
M312	DBA 3100.7N 02828.0E AMIBO 3456.7N 2136.4E *Note 3 (HE)	UM312	DBA 3100.7N 02828.0E AMIBO 3456.7N 2136.4E *Note 3 (HE)
M316	KANAS 251552N 0574700E GOKSO 265542N 0604012E	UM316	KANAS 251552N 0574700E GOKSO 265542N 0604012E
M318	GABKO 260404N 0554755E GITSA 254132N 0553926E *Note 7 (SERSA-GABKO) Eastbound SERSA 251945N 0553118E MIADA 245112N 0545736E ABU DHABI (ADV) 242508N 0544024E ATUDO 241708N 0543532E MUSEN 241429N 0543336E GOLGU 231051N 0523109E MUXIT 230229N 0523024E KITAP 224928N 0522923E PURDA 210805N 0510329E SHARURAH (SHA) NADKI 171418N 0464706E SAA 153100N 0441311E HDH 144622N 0425911E	UM318	KITAP 224928N 0522923E PURDA 210805N 0510329E SHARURAH (SHA) NADKI 171418N 0464706E SAA 153100N 0441311E HDH 144622N 0425911E
M320	KING FAHD (KFA) KODAG 2703.3N 04920.4E RAS ASVIR 283220N 0482220E KUWAIT (KUA)	UM320	KING FAHD (KFA) KODAG 2703.3N 04920.4E RAS ASVIR 283220N 0482220E KUWAIT (KUA)
M321	HALAIFA 262602N 0391609E (HLF) ROSUL 2539.7N 04215.3E OVEKU 2509.9 04457.0E KING KHALED (KIA) RESAL 240649N 0470427E AMBAG 230529N 0474611E ALRIK 220631N 0482525E NONGA 205048N 0492014E ASTIN 200410N 0495320E SILPA 184953N 0510158E IMPOS 183136N 0511848E LOTEL 180926N 0514103E PUTRA 165432N 0525631E	UM321	HALAIFA 262602N 0391609E (HLF) ROSUL 2539.7N 04215.3E OVEKU 2509.9 04457.0E KING KHALED (KIA) RESAL 240649N 0470427E AMBAG 230529N 0474611E ALRIK 220631N 0482525E NONGA 205048N 0492014E ASTIN 200410N 0495320E SILPA 184953N 0510158E IMPOS 183136N 0511848E LOTEL 180926N 0514103E PUTRA 165432N 0525631E
M425	SILKO 3347.9N 03435.0E CAK	UM425	SILKO 3347.9N 03435.0E CAK

LOWER AIRSPACE

UPPER AIRSPACE

Designator 1	Significant Points 2
M428	RIKET 251859N 0560200E *Note 7/8 (OO/OM) GOMTA 251115N 0563447E TARBO 244351N 0574637E MUNGA 242516N 0584533E
M430	*Note 5 (KIA-DOH) KING KHALID (KIA) 245310N 0464534E KOBEX 250716N 0475046E KIREN 251447N 0490724E *Note 8 (KIREN-TOSNA) HSA 251645N 0492903E SALWA 251538N 0503048E ULIKA 251545N 0503848E GINTO 251605N 0510415E LAGNO 251613N 0511518E DOHA HAMAD INTL (DOH) 251459N 0513630E BOVIP 251554N 0523135E TOSNA 251612N 0524116E *Note 7 (DOH-KISAG) KISAG 251834N 0541408E
M434	UMESA 351741N 0434307E OTALO 351700N 0441900E IVANO 351724N 0451235E BOXIX 351724N 0460921E ALSAX 351607N 0463118E SANANDAJ (SNJ) HAMDAN(HAM) SAVEH(SAV)
M444	DOHA/HAMAD INTL (DOH) 251459N 0513634E EMISA 254658N 0514206E PATOM 255821N 0511836E DENVO 260452N 0510509E BAHRAIN (BAH) 261551N 0503855E ELOS0 262409N 0503550E

Designator 1	Significant Points 2
UM428	RIKET 251859N 0560200E *Note 7/8 (OO/OM) GOMTA 251115N 0563447E TARBO 244351N 0574637E MUNGA 242516N 0584533E
UM430	*Note 5 (KIA-DOH) KING KHALID (KIA) 245310N 0464534E KOBEX 250716N 0475046E KIREN 251447N 0490724E *Note 8 (KIREN-TOSNA) HSA 251645N 0492903E SALWA 251538N 0503048E ULIKA 251545N 0503848E GINTO 251605N 0510415E LAGNO 251613N 0511518E DOHA HAMAD INTL (DOH) 251459N 0513630E BOVIP 251554N 0523135E TOSNA 251612N 0524116E *Note 7 (DOH-KISAG) KISAG 251834N 0541408E
UM434	UMESA 351741N 0434307E OTALO 351700N 0441900E IVANO 351724N 0451235E BOXIX 351724N 0460921E ALSAX 351607N 0463118E SANANDAJ (SNJ) HAMDAN(HAM) SAVEH(SAV)
UM440	KING KHALED (KIA) OTAMA 235148N 0494707E KUTNA 231341N 0512730E KITAP 224928N 0522923E TOKRA 220925N 0553350E
UM444	DOHA/HAMAD INTL (DOH) 251459N 0513634E EMISA 254658N 0514206E PATOM 255821N 0511836E DENVO 260452N 0510509E BAHRAIN (BAH) 261551N 0503855E ELOS0 262409N 0503550E

LOWER AIRSPACE

UPPER AIRSPACE

Designator 1	Significant Points 2	Designator 1	Significant Points 2
	EGMOR 264210N 0502906E LOTOR 264854N 0502200E RAMSI 270249N 0500714E ORDAN 271706N 0495442E GIRSI 274126N 0493310E ENASO 275706N 0491911E DAVUS 282346N 0490622E		EGMOR 264210N 0502906E LOTOR 264854N 0502200E RAMSI 270249N 0500714E ORDAN 271706N 0495442E GIRSI 274126N 0493310E ENASO 275706N 0491911E DAVUS 282346N 0490622E
M449	BUSRA 322000N 0363700E MAZAR 3048.0N 03610.0E GIBET 2926.3N 03625.0E TABUK (TBK) WEJH (WEJ)	UM449	BUSRA 322000N 0363700E MAZAR 3048.0N 03610.0E GIBET 2926.3N 03625.0E TABUK (TBK) WEJH (WEJ)
M551	KIVEL 165306N 0553633E DAXAM 171612N 0544715E	UM551	DONSA1435.3N06344.0E ANGAL1614.1N 06000.1E OTOTO 164004N 0570435E KIVEL 165306N 0553633E DAXAM 171612N 0544715E
M557	ATBOR 251007N 0551947E *Note7 & 8 to MIDS NADIL 252252N 0544717E NABOP 252607N 0540405E EMAGO 253456N 0535751E VUVOK 254408N 0533024E	UM557	ATBOR 251007N 0551947E *Note7 & 8 to MIDS NADIL 252252N 0544717E NABOP 252607N 0540405E EMAGO 253456N 0535751E VUVOK 254408N 0533024E
M559	LABNI 165620N 0410921E NISMI 162415N 0421838E ITOLI 152825N 0450927E MUKALLA (RIN) VEDET 120134N 0512410E	UM559	LABNI 165620N 0410921E NISMI 162415N 0421838E ITOLI 152825N 0450927E MUKALLA (RIN) VEDET 120134N 0512410E
M561	KISH (KIS) MOBET 2645.3N 05609.8E ASVIB 265724N 0631812E PANJGUR (PG)	UM561	KISH (KIS) MOBET 2645.3N 05609.8E ASVIB 265724N 0631812E PANJGUR (PG)
		UM573	TEHERAN (TRN) TABRIZ (TBZ) 3808.3N 04613.9E
		UM574	MALE) (MLE) (POPET) 0713.7N06813.6E NABIL 1222.0E0600.0E RIGAM 143932N 0530414E NOBSU 171554N 0431318E

LOWER AIRSPACE

UPPER AIRSPACE

Designator 1	Significant Points 2
M600	RANBI 251908N 0544500E KISAG 251834N 0541408E TUMAK 255031N 0531108E VEDOM 260109N 0524456E VELAK 261307N 0521821E LABOP 261907N 0520429E ALTOM 262230N 0515639E DASOS 262429N 0515043E ALMOK 262832N 0513840E VEDOS 264105N 0510044E NABOS 264354N 0505145E MOGAS 264759N 0503909E RAKAK 265221N 0502618E RAMSI 270249N 0500714E ORNAK 272853N 0493248E SOLEM 275229N 0491136E KUMBO 281705N 0485526E
M628	LUDID 230227N 0551800E LABSA 230153N 0555505E EGVAN 230127N 0561907E TULBU 230005N 0571827E IZK 225318.60N 0574542.73E TOLDA 224008N 0583624E LOXOP 223722N 0594548E LADAP 223513N 0603238E IVOMA 223408N 0605430E PARAR 222630N 0630700E
M634	ANGAL 161406N 0600006E VEDET 120134N 0512410E DAROT 0911.4N 04721.2E
M651	ATBOT 171418N 0464706E ADEN (KRA) (HARGEISA) HARGA
M677	SESRA 290800N 0485454E RABAP 283625N 0492722E PASAK 282459N 0494846E

Designator 1	Significant Points 2
UM600	RANBI 251908N 0544500E KISAG 251834N 0541408E TUMAK 255031N 0531108E VEDOM 260109N 0524456E VELAK 261307N 0521821E LABOP 261907N 0520429E ALTOM 262230N 0515639E DASOS 262429N 0515043E ALMOK 262832N 0513840E VEDOS 264105N 0510044E NABOS 264354N 0505145E MOGAS 264759N 0503909E RAKAK 265221N 0502618E RAMSI 270249N 0500714E ORNAK 272853N 0493248E SOLEM 275229N 0491136E KUMBO 281705N 0485526E
UM628	DAFINAH (DFN) 231700N 0414312E KIPOM 225316N 0501518E MIGMA 225035N 0512749E KITAP 224928N 0522923E ALPEK 224648N 0535942E LUDID 230227N 0551800E LABSA 230153N 0555505E EGVAN 230127N 0561907E TULBU 230005N 0571827E IZK 225318.60N 0574542.73E TOLDA 224008N 0583624E LOXOP 223722N 0594548E LOSIM 223513N 0603238E IVOMA 223408N 0605430E PARAR 222630N 0630700E
UM634	ANGAL 161406N 0600006E VEDET 120134N 0512410E DAROT 0911.4N 04721.2E
UM651	ATBOT 171418N 0464706E ADEN (KRA) (HARGEISA) HARGA
UM677	SESRA 290800N 0485454E RABAP 283625N 0492722E PASAK 282459N 0494846E

LOWER AIRSPACE

UPPER AIRSPACE

Designator 1	Significant Points 2
	GOGMA 281421N 0495612E IVIVI 273734N 0502437E VEDOR 270855N 0504630E TOSDA 270004N 0505629E TORBO 265222N 0511024E SOGAN 263915N 0515408E DEGSO 261054N 0531946E OBNET 260032N 0534514E ITITA 254410N 0541839E SERSA 251945N 0553118E LALDO 251806N 0563600E
M681	TARBO 244351N 0574637E *Note 7/8 (OO) DAMUM 243236N 0591307E
M686	LUXOR (LXR) MEMPO 252518N 0335457E GIBAL 243712N 0363442E KING ABDULAZIZ (JDW)

Designator 1	Significant Points 2
	GOGMA 281421N 0495612E IVIVI 273734N 0502437E VEDOR 270855N 0504630E TOSDA 270004N 0505629E TORBO 265222N 0511024E SOGAN 263915N 0515408E DEGSO 261054N 0531946E OBNET 260032N 0534514E ITITA 254410N 0541839E SERSA 251945N 0553118E LALDO 251806N 0563600E
UM681	TARBO 244351N 0574637E *Note 7/8 (OO) DAMUM 243236N 0591307E
UM686	LUXOR (LXR) MEMPO 252518N 0335457E GIBAL 243712N 0363442E KING ABDULAZIZ (JDW)
UM688	CRM GULRA ERN EVSAS BAYIR 383541N 0412414 E ULTED OTKEP NINVA 372100N 0431300E ROXOP 364917N 0433100E VUSEB 3616 37N E0434800E OTALO 351700N 0441900E RIDIP 343012N 0444027E UKMUG 334300N 0450329E VAXEN 3318 00N 0451500E PAPUS 325334N 0452706E KATUT 323737N 0453439E DENKI 322228.46N 0455121.58E ILMAP 31 21 33N 0465702E PEBAD 305023.09N 0472958.49E SIDAD 295231N 0482944E
UM690	ZELAF 325656N 0371121E ORNAL 324755N 0375153E DESLI 314921N 0365909E ELOXI 313359N 0364536E KULDI 311847 0363214E MAZAR 3048N 3610E ROVAR 292438N 0345711E

LOWER AIRSPACE

UPPER AIRSPACE

Designator 1	Significant Points 2
M691	DEDAS 2630.2N 05014.4E KING FAHAD KUSAR 264741N 0490218E KEDAT 2721.8N 04759.0E ITIXI 275031N 0470435E
M762	REXOD 211230N 0613830E SUR 223159N 0592829E ITURA 232351N 0580720E ALMOG 233524N0574940E TAPRA 242607N 0563803E VAXAS 244308N 0561807E * Note 7 (OM, OO) BUBIN 245742N 0560642E
M860	KUGOS 4246.8N 03405.3E SINOP (SIN) CARSAMBA (CRM) SRT 3754.6N 04152.9E KABAN N371456N 0423859E EMIDO 364411.33N 042 56 00E SEVKU 360548.02N 0431715.84E UMESA 351741.49N 0434306.89E TAGRU 342958.95N 0440816.67E PUTSI 333200N E044 3700E ITOVA 331950.91N 0444 28.97E SEPTU 331300N 0444400E LONOR 323838.63N 0450458.48E ULIMA 321500N 0451600E ITBIT 314735.20N 045 2916.57E RUGIR 303219.06N 046 0618.20E MOBIS 295108.84N 047 0457.39E
M863	KING ABDUL AZIZ (JDW) 214237N 0390948E GIBAP 212218N 0380931E TOMRU 204411N 0361950E ASKOL 1548.9N 02400.1E KITOB 1521.7N 02258.8E IPONO 150621 N 0222436 E N'DJAMENA (FL) 1208.5N 01502.3E
M872	PLH 3513.7N 02340.9E

Designator 1	Significant Points 2
UM691	DEDAS 2630.2N 05014.4E KING FAHAD KUSAR 264741N 0490218E KEDAT 2721.8N 04759.0E ITIXI 275031N 0470435E
UM860	KUGOS 4246.8N 03405.3E SINOP (SIN) CARSAMBA (CRM) SRT 3754.6N 04152.9E KABAN N371456N 0423859E EMIDO 364411.33N 042 56 00E SEVKU 360548.02N 0431715.84E UMESA 351741.49N 0434306.89E TAGRU 342958.95N 0440816.67E PUTSI 333200N E044 3700E ITOVA 331950.91N 0444 28.97E SEPTU 331300N 0444400E LONOR 323838.63N 0450458.48E ULIMA 321500N 0451600E ITBIT 314735.20N 045 2916.57E RUGIR 303219.06N 046 0618.20E MOBIS 295108.84N 047 0457.39E
UM861	ELEXI 3441.5N 04109.0E DIER-ZZOR (DRZ) ALEPPO (ALE) NISAP 364724N 0363830E
UM863	KING ABDUL AZIZ (JDW) 214237N 0390948E GIBAP 212218N 0380931E TOMRU 204411N 0361950E ASKOL 1548.9N 02400.1E KITOB 1521.7N 02258.8E IPONO 150621 N 0222436 E N'DJAMENA (FL) 1208.5N 01502.3E
UM872	PLH 3513.7N 02340.9E

LOWER AIRSPACE

UPPER AIRSPACE

Designator 1	Significant Points 2
	*Note 7 (PLH-DBA) METRU 340000N 0250900E KANAR 322727N 0265330E EL DABA (DBA) 310041N 0282801E FYM 2923.8N 03023.6E *Note 7 (FYM-SEMRU) SEMRU 280200N 0320306E HURGHADA (HGD) SILKA 263400N 0352900E WEJH (WEJ) 261046N 0362917E KODIN 2517.9N 03836.2E MADINAH (PMA) *Note 7 (PMA-MIDSI) BIR DARB (BDB) AL DAWADMI (DAW) KING KHALID (KIA) AKRAM 255036N 0475133E *Note 8 to MIDSI ALMAL 261553N 0482108E DAVRI 264936N 0505732E MIDSI 264142N0515442E
M999	GS DITAR 265903N 0250000E KHG KUNAK (LUXOR) LXR DEDLI 2242 32N 03737 19E IMLER 221706N 0381653E KING ABDULAZIZ (JDW) TOKTO 194421N 00395945E DANAK 1608.0N 04129.0E (ASSAB) SB
N300	DOHA/HAMAD INTL (DOH) 251459N 0513634E *Note 7 & 8 to TONVO ELOBI 250752N 0521721E NAMLA 250532N 0523318E BOXAK 244536N 0540032E MIADA 245112N 0545736E TONVO 250500N 0563200E
N302	SIDAD 295231N 0482944E ALVIX 291915N 0482944E

Designator 1	Significant Points 2
	*Note 7 (PLH-DBA) METRU 340000N 0250900E KANAR 322727N 0265330E EL DABA (DBA) 310041N 0282801E FYM 2923.8N 03023.6E *Note 7 (FYM-SEMRU) SEMRU 280200N 0320306E HURGHADA (HGD) SILKA 263400N 0352900E WEJH (WEJ) 261046N 0362917E KODIN 2517.9N 03836.2E MADINAH (PMA) *Note 7 (PMA-MIDSI) BIR DARB (BDB) AL DAWADMI (DAW) KING KHALID (KIA) AKRAM 255036N 0475133E *Note 8 to MIDSI ALMAL 261553N 0482108E DAVRI 264936N 0505732E MIDSI 264142N0515442E
UM877	VUSET 235540N 0590812E ITILA 234015N 0584817E KUSRA 232426N 0582611E
UM999	GS DITAR 265903N 0250000E KHG KUNAK (LUXOR) LXR DEDLI 2242 32N 03737 19E IMLER 221706N 0381653E KING ABDULAZIZ (JDW) TOKTO 194421N 00395945E DANAK 1608.0N 04129.0E (ASSAB) SB
UN300	DOH 2514.0N 05134.6E (DOH) 251459N 0513634E *Note 7 & 8 to TONVO ELOBI 250752N 0521721E NAMLA 250532N 0523318E BOXAK 244536N 0540032E MIADA 245112N 0545736E TONVO 250500N 0563200E
UN302	SIDAD 295231N 0482944E ALVIX 291915N 0482944E

LOWER AIRSPACE

UPPER AIRSPACE

Designator 1	Significant Points 2
N303	(HARGEISA) HARGA PARIM 1231.7N 04327.2E RIBOK1547N 04152.5E LABNI 1656.3N 04109.4E
N307	MELDO 320201N 0310406E LAKTO 323800N 0320500E
N310	BALMA 342856N 0350302E CAK 341802N 0354200E LATEB 3401.9N 03624.1E BASEM 3333.6N 03739.1E
N318	QAA 314423N 0360926E ALNOR 313955N 0362507E KINUR 313626N 0363714E ELOXI 313359N 0364536E GENEX 312935N 370052E GURIAT (GRY) 312445N 0371712E ORKAS 3047254N 0384617 E NEVOL 302446N 0393841E VELAL 294602N 04038214E TAMRO 283838N 0424047E * Note7 (OE, OB, OM, OO) MOGON 273848N 0444554E TAGSO 272744N 0454510E *Note 8 (OB, OO) EGNOV 270301N 0474713E KUSAR 264741N 0490218E ASPAN 263255N 0494903E DEDAS 263011N 0501427E LADNA 262749N 0502245E ELOS0 262409N 0503551E DAVOV 262255N 0504013E GOLKO 262149N 0504404E ASTAD 261812N 0505646E

Designator 1	Significant Points 2
UN303	(HARGEISA) HARGA PARIM 1231.7N 04327.2E RIBOK1547N 04152.5E LABNI 1656.3N 04109.4E
UN307	MELDO 320201N 0310406E LAKTO 323800N 0320500E
UN310	BALMA 342856N 0350302E CAK 341802N 0354200E LATEB 3401.9N 03624.1E BASEM 3333.6N 03739.1E
UN315	ASPUX 174406N 0600006E KUTVI 184306N 0582642E Note:- 7 (OO/OB) SITOL 211604N 0552514E LOTOS 220000N 0503912E RAPMA 232256N 0482028E RESAL 240649N 0470427E KING KHALED (KIA)
UN316	HALAIFA (HLF) 262603N 0391609E PASAM 273045N 0345542E
UN318	QAA 314423N 0360926E ALNOR 313955N 0362507E KINUR 313626N 0363714E ELOXI 313359N 0364536E GENEX 312935N 370052E GURIAT (GRY) 312445N 0371712E ORKAS 3047254N 0384617 E NEVOL 302446N 0393841E VELAL 294602N 04038214E TAMRO 283838N 0424047E * Note7 (OE, OB, OM, OO) MOGON 273848N 0444554E TAGSO 272744N 0454510E *Note 8 (OB, OO) EGNOV 270301N 0474713E KUSAR 264741N 0490218E ASPAN 263255N 0494903E DEDAS 263011N 0501427E LADNA 262749N 0502245E ELOS0 262409N 0503551E DAVOV 262255N 0504013E GOLKO 262149N 0504404E ASTAD 261812N 0505646E

LOWER AIRSPACE

UPPER AIRSPACE

Designator 1	Significant Points 2
	TOTIS 261119N 0511027E
	RASDI 260425N 0512407E
	VELAM 255426N 0514347E
	VUTAN 255015N 0515218E
	RESAR 253707N 0522328E
	ALSEM 252703N 0524322E
	OVONA 252443N 0524739E
	(LOXAT – REXOD)
	KATIK 251709N 0531515E
	KANIP 241042N 0552042E
	LABRI 240344N 0553842E
	EGROK 235253N 0560126E
	LAKLU 232235N 0570401E
	GEVED 230105N 0575111E
	TOLDA 223720N 0583503E
	REXOD211230N 0613830E

Designator 1	Significant Points 2
	TOTIS 261119N 0511027E
	RASDI 260425N 0512407E
	VELAM 255426N 0514347E
	VUTAN 255015N 0515218E
	RESAR 253707N 0522328E
	ALSEM 252703N 0524322E
	OVONA 252443N 0524739E
	(LOXAT-REXOD)
	KATIK 251709N 0531515E
	KANIP 241042N 0552042E
	LABRI 240344N 0553842E
	EGROK 235253N 0560126E
	LAKLU 232235N 0570401E
	GEVED 230105N 0575111E
	TOLDA 223720N 0583503E
	REXOD211230N 0613830E

UN319	ZAHEDAN (ZDN)
	TABAS (TBS)
	DASHT-E-NAZ (DNZ)
	ULDUS- 3800.0N 05101.0E
	LUSAL 4035.0N 04757.0E
	ADEKI 4117.8N 04645.0E
	TBILIS (TBS)
	MUKHARANI (DF)
	ALI (BT)
	LOBIN 4210.9N 04306.4E
	IBERI 4209.6N 04143.3E

N324	PURDA 210805N 0510329E
	GOBRO 193622N 0534741E
	ASTUN 180832N 0551040E

UN324	PURDA 210805N 0510329E
	GOBRO 193622N 0534741E
	ASTUN 180832N 0551040E

N430	TARBO 244351N 0574637E
	*Note 7/8 (OO)
	ITLOB 244325N 0590701E

UN430	TARBO 244351N 0574637E
	*Note 7/8 (OO)
	ITLOB 244325N 0590701E

N438	LITAN 333456N 0343758E
	KAD 334827N 0352910E
	CAK 341802N 0354200E
	RA 343510N 0360010E

UN438	LITAN 333456N 0343758E
	KAD 334827N 0352910E
	CAK 341802N 0354200E
	RA 343510N 0360010E

N440	MOBON 274414N 0552513E
	DARAX 260916N 0555307E

UN440	MOBON 274414N 0552513E
	DARAX 260916N 0555307E

UN555	BELGAUM (BBM)
	BISET 1823.4N 06918.1E
	KATBI 1931.6N 06500.0E
	LOTAV 2037.0N 06057.0E

LOWER AIRSPACE

UPPER AIRSPACE

Designator 1	Significant Points 2
N563	REXOD 211230N 0613830E *Note 8 (OB, OM) *Note 7 (OB, OO, OM) EMURU 221357N 0585338E TULBU 230005N 0571827E MEKNA 223309N 0560815E SODEX 234954N 0553202E NOBTO 235525N 0551840E ADV MEMBI 243705N 0542631E ATBEX 250739N 0535019E ITROK 253557N 0532751E ALPOB 254218N 0530055E ROTAG 255353N 0523621E SOLEG 260159N 0521756E SOLOB 262241N 0513132E MEDMA 263412N 0505454E TOTLA 263806N 0504301E RULEX 264529N 0501745E SILNO 264026N 0475745E GIBUS 255724N 0472829E
N571	PARAR 2226.5 N 06307E *Note 7 & 8 (OB, OM, OO) KIPOL 230410N 0612903E RAGMA 230600N 0610539E SODEB 234747N 0593023E VUSET 235540N 0590812E KIROP 243000N 0574700E MENSA 245750N 0563249E AVAMI 250554N 0555647E ATBOR 251007N 0551947E MUVLA 251716N 0544500E SENTO 251908N 0544500E ELUKU 252910N 0535610E

Designator 1	Significant Points 2
UN563	(BANGALORE) BBG *Note 8 (OB, OM) REXOD 211230N 0613830E *Note 7 (OB, OO,OM) EMURU 221357N 0585338E TULBU 230005N 0571827E MEKNA 223309N 0560815E SODEX 234954N 0553202E NOBTO 235525N 0551840E MEMBI 243705N 0542631E ATBEX 250739N 0535019E ITROK 253557N 0532751E ALPOB 254218N 0530055E ROTAG 255353N 0523621E SOLEG 260159N 0521756E SOLOB 262241N 0513132E MEDMA 263412N 0505454E TOTLA 263806N 0504301E RULEX 264529N 0501745E SILNO 264026N 0475745E GIBUS 255724N 0472829E
UN569	BONUM 221252N 0393805E RABTO 221608N 0400326E LOTOS *Note:- 7 (LOTOS-GOLNI) TOKRA 220925N 0553350E TOPSO 215653N 0562043E MOGOK 215057N 0564236E KEBAS 214330N 0570948E GISKA 213503N 0574014E UMILA 211555N 0584738E GOLNI 210014N 0594130E LOTAV 203700N 0605700E
UN571	(GUNIP 0429.9N 09931.8E) (VAMPI 0610.9N 09735.1E) (MEKAR 0630.2N 06929.5E) (SUGID- 1933.1 N 06921.0E) PARAR 2226.5 N 06307E *Note 7 & 8 (OB, OM, OO) KIPOL 230410N 0612903E RAGMA 230600N 0610539E SODEB 234747N 0593023E VUSET 235540N 0590812E KIROP 243000N 0574700E MENSA 245750N 0563249E AVAMI 250554N 0555647E

LOWER AIRSPACE

UPPER AIRSPACE

Designator 1	Significant Points 2
	ITROK 253557N 0532751E ALPOB 254218N 0530055E SOLOB 262241N 0513132E MEDMA 263412N 0505454E TOTLA 263806N 0504301E RULEX 264529N 0501745E SILNO 264026N 0475745E KUTEM 264359N 0473521E BOPAN (BPN) 270314N 0452642E
N629	TARDI 243418N 0560915E *Note 7 (OO) NOSMI 241757N 0563002E MUSUK 234320N 0572148E GEPOT 231446N 0580053E GIDAN 230104N 0582232E TOTOX 215030N 0622230E
N638	KING KHALED (KIA) OVEKU 250955N 0445701E MADINAH (PMA)
N685	TAGSO 272744N 0454510E *Note 7 (TAGSO-KUSAR) *Note 8 (TAGSO-TOSNA) DEBOL 272116N 0461843E TORTA 271906N 0462911E ALSAT 270611N 0473118E EGNOV 270301N 0474713E KUSAR 264741N 0490218E KING FAHAD (KFA) 262153N 0494910E NARMI 261802N 0501939E BAHRAIN (BAH) 261551N 0503856E DENVO 260452N 0510509E PATOM 255821N 0511836E EMISA 254658N 0514207E *Note 7 to LAKLU KAPAX 254218N 0515118E ORSIS 252801N 0521636E ENANO 252348N 0522558E TOSNA 251612N 0524116E TOPSI 250910N 0531200E BOXAK 244536N 0540032E

Designator 1	Significant Points 2
	ATBOR 251007N 0551947E MUVLA 251716N 0544500E SENTO 251908N 0544500E ELUKU 252910N 0535610E ITROK 253557N 0532751E ALPOB 254218N 0530055E SOLOB 262241N 0513132E MEDMA 263412N 0505454E TOTLA 263806N 0504301E RULEX 264529N 0501745E SILNO 264026N 0475745E KUTEM 264359N 0473521E BOPAN (BPN) 270314N 0452642E
UN629	TARDI 243418N 0560915E *Note 7 (OO) NOSMI 241757N 0563002E MUSUK 234320N 0572148E GEPOT 231446N 0580053E GIDAN 230104N 0582232E TOTOX 215030N 0622230E
UN638	KING KHALED (KIA) OVEKU 250955N 0445701E MADINAH (PMA)
UN685	TAGSO 272744N 0454510E *Note 7 (TAGSO-KUSAR) *Note 8 (TAGSO-TOSNA) DEBOL 272116N 0461843E TORTA 271906N 0462911E ALSAT 270611N 0473118E EGNOV 270301N 0474713E KUSAR 264741N 0490218E KING FAHAD (KFA) 262153N 0494910E NARMI 261802N 0501939E BAHRAIN (BAH) 261551N 0503856E DENVO 260452N 0510509E PATOM 255821N 0511836E EMISA 254658N 0514207E *Note 7 to LAKLU KAPAX 254218N 0515118E ORSIS 252801N 0521636E ENANO 252348N 0522558E TOSNA 251612N 0524116E TOPSI 250910N 0531200E BOXAK 244536N 0540032E

LOWER AIRSPACE

UPPER AIRSPACE

Designator 1	Significant Points 2	Designator 1	Significant Points 2
	ADV 242508N 0544024 RETAS 235754N 0553423E *Note 8 (OO) PUTSO 232037N 0565322E LAKLU 232235N 0570401E		ADV 242508N 0544024 RETAS 235754N 0553423E *Note 8 (OO) PUTSO 232037N 0565322E LAKLU 232235N 0570401E
N687	KING KHALID (KIA) 245310N 0464534E KINIB 254108N 0482317E *Note 5 & 7 & 8 KING FAHAD (KFA) 262153N 0494910E EMOLO 263559N 0500526E ROTEL 264015N 0502149E EGMOR 264210N 0502906E DAVRI 264936N 0505732E TORBO 265223N 0511024E	UN687	KING KHALID (KIA) 245310N 0464534E KINIB 254108N 0482317E *Note 5 & 7 & 8 KING FAHAD (KFA) 262153N 0494910E EMOLO 263559N 0500526E ROTEL 264015N 0502149E EGMOR 264210N 0502906E DAVRI 264936N 0505732E TORBO 265223N 0511024E
N694	KING KHALD (KIA) TORKI 261400N 0463103E SIBLI 265459N 0462334E AKODI 275012N 0461320E HAFR AL BATIN 281949N 0460746E (HFR)	UN694	KING KHALD (KIA) TORKI 261400N 0463103E SIBLI 265459N 0462334E AKODI 275012N 0461320E HAFR AL BATIN 281949N 0460746E (HFR)
N697	MENLI 294700N 0315206E SISIK 293600N 0324100E NUWEIBAA * Note 7 (NWB-KITOT above FL350) KITOT 290205N 0345050E SOBAS 275600N 0390454E HAIL (HIL) 272530N 0414058E *Note 7 (HIL-KFA) BPN 270312N 0452642E *Note 8 (BPN-TORBO) KING FAHD (KFA) 262153N 04949 NARMI 261802N 0501939E BAHRAIN (BAH) 261551N 0503855E *Note 7 GOLKO 262149N 0504404E TOSTA 262746N 0504912E MEDMA 263421N 0505454E VEDOS 264105N 0510044E SODAK 264634N 0510530E TORBO 265223N 0511024E	UN687	MENLI 294700N 0315206E SISIK 293600N 0324100E NUWEIBAA * Note 7 (NWB-KITOT above FL350) KITOT 290205N 0345050E SOBAS 275600N 0390454E HAIL (HIL) 272530N 0414058E *Note 7 (HIL-KFA) BPN 270312N 0452642E *Note 8 (BPN-TORBO) KING FAHD (KFA) 262153N 04949 NARMI 261802N 0501939E BAHRAIN (BAH) 261551N 0503855E *Note 7 GOLKO 262149N 0504404E TOSTA 262746N 0504912E MEDMA 263421N 0505454E VEDOS 264105N 0510044E SODAK 264634N 0510530E TORBO 265223N 0511024E
N764	NOBSU 171554N 0431318E MUKALLAH (RIN) 144015N 0492329E SOCOTRA (SOC) 123749N 0535429E	UN764	NOBSU 171554N 0431318E MUKALLAH (RIN) 144015N 0492329E SOCOTRA (SOC) 123749N 0535429E

LOWER AIRSPACE

UPPER AIRSPACE

Designator 1	Significant Points 2	Designator 1	Significant Points 2
	SUHIL 120000N 0550000E NABAM 101112N 0581424E		SUHIL 120000N 0550000E NABAM 101112N 0581424E
N767	PARAR 222630N 0630700E VUSIN 225940N 0605510E * Note 7 (OO) ATBED 230352N 0603752E ELIGO 232458N 0590848	UN767	PARAR 222630N 0630700E VUSIN 225940N 0605510E * Note 7 (OO) ATBED 230352N 0603752E ELIGO 232458N 0590848
		UN881	RASKI 230330N 0635200E SETSI 230412N 0614410E KIPOL 230410N 0612903E ATBED 230352N 0603752E AMBOS 230324N 0595405 MUSRU 230256N 0592223E *Note 7 (OO) OBTIN 230216N 0585920E GIDAN 230104N 0582232E GEVED 230105N 0575111E TULBU 230005N 0571827E
N929	DASLO 254537N 0523029E *Note 7 & 8 to GIBUS NAGOG 255214N 0521615E BONAN 260201N 0515505E VEDED 260558N 0514628E SOGAT 262029N 0511443E TOSTA 262746N 0504913E DANAG 264438N 0494856E NADNA 264245N 0485309E SILNO 264026N 0475745E ASKOK 262623N 0474809E MUSRI 261647.0N 0474137.0E GIBUS 255724.0N 0472829.0E	UN929	DASLO 254537N 0523029E *Note 7 & 8 to GIBUS NAGOG 255214N 0521615E BONAN 260201N 0515505E VEDED 260558N 0514628E SOGAT 262029N 0511443E TOSTA 262746N 0504913E DANAG 264438N 0494856E NADNA 264245N 0485309E SILNO 264026N 0475745E ASKOK 262623N 0474809E MUSRI 261647.0N 0474137.0E GIBUS 255724.0N 0472829.0E
		UP146	RASHT (RST) AGINA 3919.4N 04405.2E (AGRI) (ARI) (YAVUZ 4002.7N 04226.0E) (TRABZON (TBN)
P300	KAD 334827N 0352910E LATEB 3401.9N 03624.1E	UP300	KAD 334827N 0352910E LATEB 3401.9N 03624.1E
P304	EGROK 235253N 0560126E *Note 7 (OO) MEKNA 233309N 0560815E EGVAN 230127N 0561907E DEMKI 224941N 0562308E	UP304	EGROK 235253N 0560126E *Note 7 (OO) MEKNA 233309N 0560815E EGVAN 230127N 0561907E DEMKI 224941N 0562308E

LOWER AIRSPACE

UPPER AIRSPACE

Designator 1	Significant Points 2	Designator 1	Significant Points 2
	NAMVA 223309N 0562223E TOPSO 215653N 0562043E KUROV 211627N 0561853E VELIK 203322N 0561656E		NAMVA 223309N 0562223E TOPSO 215653N 0562043E KUROV 211627N 0561853E VELIK 203322N 0561656E
P307	(SHJ) 251944.9N 0553118.1E Note 7 (OM,OO) TONVO 250500N 0563200E PURNI 243804N 0574354E *Note 8 (OO) KUNUS 241927N 0583226E ALSAS 240054N 0591955E DERTO 235033N 0594746E VAXIM 231900N 0611100E SETSI 230412N 0614410E PARAR 222630N 0630700E	UP307	(SHJ) 251944.9N 0553118.1E Note 7 (OM,OO) TONVO 250500N 0563200E PURNI 243804N 0574354E *Note 8 (OO) KUNUS 241927N 0583226E ALSAS 240054N 0591955E DERTO 235033N 0594746E VAXIM 231900N 0611100E SETSI 230412N 0614410E PARAR 222630N 0630700E
P312	MUKALLA (RIN) PAKER 1155.0N0463500E (HARGEISA) HARGA	UP312	MUKALLA (RIN) PAKER 1155.0N0463500E (HARGEISA) HARGA
P316	SALALLAH (SLL) * Note 7 (OO) DAXAM 171612N 0544715E GAGLA 180505N 0552410E GIVNO 195011N 0563059E MOBAB 201032N 0564415E GISKA 213503N 0574014E RADAX 220809N 0580230E MUSCAT (MCT)	UP316	SALALLAH (SLL) * Note 7 (OO) DAXAM 171612N 0544715E GAGLA 180505N 0552410E GIVNO 195011N 0563059E MOBAB 201032N 0564415E GISKA 213503N 0574014E RADAX 220809N 0580230E MUSCAT (MCT)
		UP323	DONSA 1435.3N06511.6E GIDAS 142004N0600000E NODMA 1526.0N05334.0E THAMD 1717.0N 04955.0E WDR
P425	DAHRAN (DHA) *Note 8 to ALSER BAHRAIN (BAH) 261551N 0503855E DAVOV 262255N 0504012E DATGO 262957N 0504130E TOTLA 263806N 0504301E MEMKO 264611N 0504427E BOXOG 265403N 0504553E ALSER 271100N 0504900E	UP425	DAHRAN (DHA) *Note 8 to ALSER BAHRAIN (BAH) 261551N 0503855E DAVOV 262255N 0504012E DATGO 262957N 0504130E TOTLA 263806N 0504301E MEMKO 264611N 0504427E BOXOG 265403N 0504553E ALSER 271100N 0504900E
P430	DOHA/HAMAD INTL (DOH) 251459N 0513634E	UP430	DOHA/HAMAD INTL (DOH) 251459N 0513634E

LOWER AIRSPACE

UPPER AIRSPACE

Designator 1	Significant Points 2
	*Note 8 to MIDS BAYAN 252926N 0514849E *Note 7 to MIDS KAPAX 254218N 0515118E VUTAN 255016N 0515218E ALVEN 255418N 0515315E BONAN 260201N 0515505E RAMKI 261138N 0515625E ALTOM 262230N 0515639E
P513	BUBAS 245938N 0570003E GERAR 240600N 0573616E MIXAM 234139N 0575523E * Note 7 (OO) MUSCAT (MCT)
P557	NUBAR 220000N 0313806E *See Note 6&7 MISUK 290507N 0290621E KATAB 292501N0290506E
P559	RASLI 315424N 0383648E TURAIF (TRF) 314136N 0384405E *Note 7 to DESDI KAVID 303552N 0401147E TOKLU 294213N 04202204E RASMO 285713N 0433119E KMC 275250N 0453321E ULOVO 274830N 0455420E *Note 8 (ULOVO-NAPLO) MUSKO 272640N 0473708E KEDAT 272149N 0475901E JUBAIL (JBL) 270222N 0492426E DAROR 270244N 0495815E RAMSI 270249N 0500714E GASSI 2702.9N 05022.5E KOBOK 265839N 0503349E BOXOG 265403N 0504553E DAVRI 264936N 0505731E SODAK 264634N 0510530E

Designator 1	Significant Points 2
	*Note 8 to MIDS BAYAN 252926N 0514849E *Note 7 to MIDS KAPAX 254218N 0515118E VUTAN 255016N 0515218E ALVEN 255418N 0515315E BONAN 260201N 0515505E RAMKI 261138N 0515625E ALTOM 262230N 0515639E
UP517	WAFRA (KFR) GOVAL KMC
UP552	DATEG 123549N 0471627E ULAXI 141524N 0482317E GINBO 160349N 0494017E IMPOS 183137N 0511848E
UP557	NUBAR 220000N 0313806E *See Note 6&7 MISUK 290507N 0290621E KATAB 292501N0290506E
UP559	RASLI 315424N 0383648E TURAIF (TRF) 314136N 0384405E *Note 7 to DESDI KAVID 303552N 0401147E TOKLU 294213N 04202204E RASMO 285713N 0433119E KMC 275250N 0453321E ULOVO 274830N 0455420E *Note 8 (ULOVO-NAPLO) MUSKO 272640N 0473708E KEDAT 272149N 0475901E JUBAIL (JBL) 270222N 0492426E DAROR 270244N 0495815E RAMSI 270249N 0500714E GASSI 2702.9N 05022.5E KOBOK 265839N 0503349E BOXOG 265403N 0504553E DAVRI 264936N 0505731E SODAK 264634N 0510530E

LOWER AIRSPACE

UPPER AIRSPACE

Designator 1	Significant Points 2	Designator 1	Significant Points 2
	DANOB 263946N 0512640E BOTOB 263350N 0514505E ROSAN 263129N 0515220E KUMLA 262609N 0520822E ASPAK 262115N 0522257E TOMSO 260611N 0530214E NALPO 255602N 0532945E RAPSA 253700N 0541700E DESDI 253603N 0544230E		DANOB 263946N 0512640E BOTOB 263350N 0514505E ROSAN 263129N 0515220E KUMLA 262609N 0520822E ASPAK 262115N 0522257E TOMSO 260611N 0530214E NALPO 255602N 0532945E RAPSA 253700N 0541700E DESDI 253603N 0544230E
P560	PORT SUDAN (PSD) 311743N 0321416E BOGUM 200736N 0380360E AL BAH (BHA) 201833N 0413845E KITAP 224928N 05229 PORT SUDAN (PSD) 311743N 0321416E	UP560	PORT SUDAN (PSD) 311743N 0321416E BOGUM 200736N 0380360E AL BAH (BHA) 201833N 0413845E KITAP 224928N 05229 PORT SUDAN (PSD) 311743N 0321416E
P561	BENINA (BNA) 320728N 0201513E KATAB 292501N 0290506E	UP561	BENINA (BNA) 320728N 0201513E KATAB 292501N 0290506E
P562	DEESA 294509N 0364102E ENABI 290739N 0385650E TAMRO 283938N 0424147E LOTOK 280857N 0450512E	UP562	DEESA 294509N 0364102E ENABI 290739N 0385650E TAMRO 283938N 0424147E LOTOK 280857N 0450512E
P563	HAIL (HIL) 272630N 0414158E PASAM 273145N 0345642E HURGHADA (HGD) 271140N 0334847E	UP563	HAIL (HIL) 272630N 0414158E PASAM 273145N 0345642E HURGHADA (HGD) 271140N 0334847E
		UP567	BIRJAND (BJD) ODKAT 3540.6N 05457.2E DASHT-E-NAZ (DNZ) 3638.7N 05311.4E (ULDUS -3800.0N 05101.0E) NETON 3945.7N 04811.7E BARUS 4154.2N 04250.5E
P570	KITAL 2003N 06018E MIXAM 234139N 0575523E	UP570	TRIVENDRUM (TVM) POMAN 1156.1N 07200.0E LATEB 1717.1N 06422.0E KITAL 2003N 06018E MIXAM 234139N 0575523E
		UP574	(BELGAUM) BBM (BISET- 1823.4N 06918.1E) TOTOX 215030N 0622230E * Note 7 (OM, OO)

LOWER AIRSPACE

UPPER AIRSPACE

Designator 1	Significant Points 2	Designator 1	Significant Points 2
			KUSRA 231726N 0585102E MIXAM 234138N 0575525E SOLUD 243223N 0564421E GISMO 244743N 0562236E BUBIN 245742N 0560642E TUKLA 2519.6N 05540.2E KUMUN 254000N 0551512E PAPAR 264000N 0542700E SHIRAZ SAVEH (SAV) ULDUS
		UP634	LALDO 251806N 0563600E *Note 7 ATBOR 251007N 0551947E
		UP693	AL AHSA (HSA) 251644N 0492902E *Note 8 to BUNDU BATHA (BAT) 241257N 0512707E BUNDU 250024N 0522924E
P699	ATBOR 251007N 0551947E *Note 7 (ATBOR-BAH) SITAT 251105N 0544500E KISAG 251834N 0541408E ITMUS 252322N 0535429E ALSOK 252607N 0533904E RUBAL 252957N 0531723E ORMID 253354N 0525434E *Note 8 (ORMID-KFA) DASLO 254537N 0523029E NAGOG 255214N 0521614E BONAN 260200N 0515505E VEDED 260558N 0514627E KUNDO 261631N 0512325E SOGAT 262029N 0511443E ASTAD 261812N 0505646E BAHRAIN (BAH) 261551N 0503856E NARMI 261802N 0501939E KING FHAD (KFA) 262153N 0494910E	UP699	ATBOR 251007N 0551947E *Note 7 (ATBOR-BAH) SITAT 251105N 0544500E KISAG 251834N 0541408E ITMUS 252322N 0535429E ALSOK 252607N 0533904E RUBAL 252957N 0531723E ORMID 253354N 0525434E *Note 8 (ORMID-KFA) DASLO 254537N 0523029E NAGOG 255214N 0521614E BONAN 260200N 0515505E VEDED 260558N 0514627E KUNDO 261631N 0512325E SOGAT 262029N 0511443E ASTAD 261812N 0505646E BAHRAIN (BAH) 261551N 0503856E NARMI 261802N 0501939E KING FHAD (KFA) 262153N 0494910E
P751	AMIBO 3456.7N 2136.4E BRN 3134.5N 02600.3E KATAB 2925.0N 2905.1E AST 2701.9N 03101.9E LUXOR (LXR) ALEBA 2200.0N 03527.0E PORT SUDAN [ASMARA] * Note 1	UP751	AMIBO 3456.7N 2136.4E BRN 3134.5N 02600.3E KATAB 2925.0N 2905.1E AST 2701.9N 03101.9E LUXOR (LXR) ALEBA 2200.0N 03527.0E PORT SUDAN [ASMARA] * Note 1

LOWER AIRSPACE

UPPER AIRSPACE

Designator 1	Significant Points 2
	TOKAR 1304.0N 04238.8E PARIM 1231.7N 04327.2E ADEN (KRA) ANGAL 1614.0N 06000.0E MUMBAI (BBB)
P891	MAGALA (MGA) *Note 7 to KUA KUTEM 264359N 0473521E EGNOV EMILU KUNRU 283220N 0481050E KUWAIT (KUA)
P899	MIXAM 234139N 0575523E *Note 7 to KUPSA PAXIM 240245N 05617631E ITRAX 241248N 0554749E AL AIN (ALN) ABU DHABI DASLA N2437.8 E05332.8 VEBAT N2448.5 E05251.0 MEKMA N245430 E0522506 *Note 8 (OB) KUPSA N250445 E0521151
P975	NOLDO 324932N 0452129E *Note 7 KATUT 323737N 0453439E DENKI 322228N 0455122E ILMAP 312133N 0465702E PEBAD 305023N 0472958E SIDAD 295231N 0482944E LOVAR 292424N 0484606E SESRA 290800N 00485454E DANAL 285130N 0490448E IMDOX 283454N 0491436E LONOS 283027N 0491713E ORGEL 281312N 0494614E

Designator 1	Significant Points 2
	TOKAR 1304.0N 04238.8E PARIM 1231.7N 04327.2E ADEN (KRA) ANGAL 1614.0N 06000.0E MUMBAI (BBB)
UP891	MAGALA (MGA) *Note 7 to KUA KUTEM 264359N 0473521E EGNOV EMILU KUNRU 283220N 0481050E KUWAIT (KUA)
UP899	MIXAM 234139N 0575523E *Note 7 to KUPSA PAXIM 240245N 05617631E ITRAX 241248N 0554749E AL AIN (ALN) ABU DHABI DASLA N2437.8 E05332.8 VEBAT N2448.5 E05251.0 MEKMA N245430 E0522506 *Note 8 (OB) KUPSA N250445 E0521151
UP975	(ELAZIG) EZS *Note7 (DYB) 384225N 0391328E LESRI 370420N 0411348E SIDNA 3634.0N 04141.0E TUBEN 351724N 0425434E MUTAG 343003N 0433834E SOGUM 341212N 0435454E SINKA 332137N 0444753E NOLDO 324932N 0452129E *Note 7 KATUT 323737N 0453439E DENKI 322228N 0455122E ILMAP 312133N 0465702E PEBAD 305023N 0472958E SIDAD 295231N 0482944E LOVAR 292424N 0484606E SESRA 290800N 00485454E DANAL 285130N 0490448E IMDOX 283454N 0491436E LONOS 283027N 0491713E ORGEL 281312N 0494614E

LOWER AIRSPACE

UPPER AIRSPACE

Designator 1	Significant Points 2	Designator 1	Significant Points 2
	DATEN 273118N 0501832E REVAX 272026N 0502651E GETAL 270409N 0504039E LOSI 270118N 0504208E BOXOG 265403N 0504553E NABOS 264354N 0505145E TOTIS 261119N 0511026E		DATEN 273118N 0501832E REVAX 272026N 0502651E GETAL 270409N 0504039E LOSI 270118N 0504208E BOXOG 265403N 0504553E NABOS 264354N 0505145E TOTIS 261119N 0511026E
R2	ATMUL 220000N 0290527E TULOP 252209N 0262226E DITAR 265903N 0250000E	UR2	ATMUL 220000N 0290527E TULOP 252209N 0262226E DITAR 265903N 0250000E
R205	ANARAK (ANK) BIRJAND (BJD)	UR205	ANARAK (ANK) BIRJAND (BJD)
R219	KUKLA 3414.6N 03444.8E KALDE (KAD)	UR219	KUKLA 3414.6N 03444.8E KALDE (KAD)
R401	AMPEX 08 1000N 055 0000E SUHIL 120000N 0550000E DAPAP 151115N 0552354E KIVEL 165306N 0553633E ERDAX 175903N 0554458E HAIMA (HAI) DEMKI 224941N 0562308E MUSAP 241754N 0555245E GIDIS 243600N 0555600E ANVIX 244655N 0555616E AVAMI 250554N 0555647E ULUSA 254925N 0555010E SOGUR 255221N 0554943E *Note7 Eastbound GABKO 260404N 0554755E GHESHM (KHM)	UR401	AMPEX 08 1000N 055 0000E SUHIL 120000N 0550000E DAPAP 151115N 0552354E KIVEL 165306N 0553633E ERDAX 175903N 0554458E HAIMA (HAI) DEMKI 224941N 0562308E MUSAP 241754N 0555245E GIDIS 243600N 0555600E ANVIX 244655N 0555616E AVAMI 250554N 0555647E ULUSA 254925N 0555010E SOGUR 255221N 0554943E *Note7 Eastbound GABKO 260404N 0554755E GHESHM (KHM)
R402	LAKLU 232235N 0570401E *Note 7 (OO) HAIMA (HAI)	UR402	LAKLU 232235N 0570401E *Note 7 (OO) HAIMA (HAI)
R462	(JIWANI) JI DENDA 2442.5N 06054.8E VUSET 235540N 0590812E *Note 7 (OO) MIXAM 234139N 0575523E	UR462	(JIWANI) JI DENDA 2442.5N 06054.8E VUSET 235540N 0590812E *Note 7 (OO) MIXAM 234139N 0575523E
R650	ASRAB 2547.4N 03306.3E HURGHADA (HGD) SHARM EL SHEIKH (SHM) NUWEIBAA (NWB)	UR650	ASRAB 2547.4N 03306.3E HURGHADA (HGD) SHARM EL SHEIKH (SHM) NUWEIBAA (NWB)

LOWER AIRSPACE

UPPER AIRSPACE

Designator 1	Significant Points 2
	NALSO 2932.0N 03453.0E
R652	ROVAR 292438N0345711E QATRANEH (QTR) GURIAT (GRY) *Note 7(OE) TURAIF (TRF) OVANO 3148.0N 03909.8E DAXAN 320512N 0393719E GIBUX 330500N 0411100E RAPLU 332300N 0414530E GEPAP 334906N 0422851E MUTAG 343003N 0433834E IVANO 351724N 0451235E
R654	ZANJAN (ZAJ) SAVEH (SAV) ESFAHAN (ISN) YAZD (YZD) KERMAN (KER) NABOD 2816.1N 05825.3E CHAH BAHAR (CBH) EGPIC 2508.6N 06029.5E
R655	(LARNACA) LCA CHEKA (CAK) KARIATAIN (KTN)
R659	TEHRAN(TRN) *Note 7 (ISN-TRN) BOXAM 343749N 0515147E DAPOG 333744N 0522331E *Note 3 (DAPOG-SYZ) SHIRAZ (SYZ) MIDSJ 264142N 0515442E *Note 8 (MIDSJ-DOH) *Note 7 (MIDSJ-VELAM) SOGAN 263915N 0515408E ROSAN 263129N 0515220E DASOS 262430N 0515043E RABLA 261506N 0514834E VEDED 260558N 0514628E VELAM 255426N 0514347E EMISA 254658N 0514207E DOHA (DOH)

Designator 1	Significant Points 2
	NALSO 2932.0N 03453.0E
UR652	ROVAR 292438N0345711E QATRANEH (QTR) GURIAT (GRY) *Note 7(OE) TURAIF (TRF) OVANO 3148.0N 03909.8E
UR654	MAGRI 385408N 0462300E ZANJAN (ZAJ) SAVEH (SAV) ESFAHAN (ISN) YAZD (YZD) KERMAN (KER) NABOD 2816.1N 05825.3E CHAH BAHAR (CBH) EGPIC 2508.6N 06029.5E
UR655	(LARNACA) CHEKA (CAK) KARIATAIN (KTN)
UR659	TEHRAN(TRN) *Note 7 (ISN-TRN) BOXAM 343749N 0515147E DAPOG 333744N 0522331E *Note 3 (DAPOG-SYZ) SHIRAZ (SYZ) MIDSJ 264142N 0515442E *Note 8 (MIDSJ-DOH) *Note 7 (MIDSJ-VELAM) SOGAN 263915N 0515408E ROSAN 263129N 0515220E DASOS 262430N 0515043E RABLA 261506N 0514834E VEDED 260558N 0514628E VELAM 255426N 0514347E EMISA 254658N 0514207E DOHA (DOH)

LOWER AIRSPACE

UPPER AIRSPACE

Designator 1	Significant Points 2
R660	(ERZURUM) (ERZ) DASIS 38 54.5N 044 12.5E TABRIZ (TBZ) RASHT (RST) TEHRAN (TRN)
R661	DULAV 3857.0N 04537.9E TABRIZ (TBZ) ZANJAN (ZAJ) RUDESHUR (RUS) VARAMIN (VR) DEHNAMAK (DHN)
R777	DANAK 1608.0N 04129.0E SANA'A TAIZ ARABO 1238.8N 04404.0E TORBA 1210.6N 04402.1E
R784	SHARJAH (SHJ) ORSAR 2604.5N 05357.5E *Note 8 (OM) DURSI 2712.3N 05201.7 E IMDAT 2740.0N 05113.0E ALNIN 2840.9N 05001.6E NANPI 290457N 0493157E SIDAD 295231N 0482944E
R785	TURAIK (TRF) ZELAF 3257.0N 03800.0E KARIATAIN (KTN) BANIAS (BAN) NIKAS 3511.6N 03543.0E
R794	ULDUS 3810.0N 05020.0E

Designator 1	Significant Points 2
UR660	(ERZURUM) (ERZ) RASHT (RST) TEHRAN (TRN)
UR661	DULAV 3857.0N 04537.9E TABRIZ (TBZ) ZANJAN (ZAJ) RUDESHUR (RUS) VARAMIN (VR) DEHNAMAK (DHN)
UR674	SABEL 185158N 0520339E LOTEL 180926N 0514103E PASUL 180341N 0513803E GOGRI 170752N 0510857E OBTAS 164633N 0505756E RARBA 161021N 0503920E UKORA 152407N 0501547E NAKAD 150056N 0500402E DANAN 144010N 0495334E XABIL 142924N 0494809E EMABI 141627N 0494139E PAXED 135027N 0492759E DEMGO 120258N 0483040E
UR777	DANAK 1608.0N 04129.0E SANA'A TAIZ ARABO 1238.8N 04404.0E TORBA 1210.6N 04402.1E
UR784	SHARJAH (SHJ) ORSAR 2604.5N 05357.5E *Note 8 (OM) DURSI 2712.3N 05201.7 E IMDAT 2740.0N 05113.0E ALNIN 2840.9N 05001.6E NANPI 290457N 0493157E SIDAD 295231N 0482944E
UR785	TURAIK (TRF) ZELAF 3257.0N 03800.0E KARIATAIN (KTN) BANIAS (BAN) NIKAS 3511.6N 03543.0E
UR794	ULDUS 3810.0N 05020.0E

LOWER AIRSPACE

UPPER AIRSPACE

Designator 1	Significant Points 2
	NOSHAHR (NSR) DEHNAMAK (DHN) TABAS (TBS) BIRJAND (BJD) * Note 5 (OI)
R799	IMPOS 183136N 0511848 E PASUL 180341N 0513803E TONRO 165850N 0522235E ASMAK 162327N 0524634E ENADO 153333N 0532015E

Designator 1	Significant Points 2
	NOSHAHR (NSR) DEHNAMAK (DHN) TABAS (TBS) BIRJAND (BJD) * Note 5 (OI)
UR799	IMPOS 183136N 0511848 E PASUL 180341N 0513803E TONRO 165850N 0522235E ASMAK 162327N 0524634E ENADO 153333N 0532015E

APPENDIX C

Iran / Bahrain

Problems are related to current “bunching” and overload of point ROTOX for traffic entering Tehran FIR. It was reported that there are more than 70 movements per hour over UT444 / UT602 and solution to this overload situation is required. Ideas might include:

Proposals by Bahrain

1. *“FLAS (currently proposed)” - ROTOX FL280 approved between 0500 - 0700 UTC, otherwise subject to prior approval.*

Proposal might be considered as logic trying to resolve the overload over the single point (ROTOX for departures) by FL allocation. The FLAS proposed between 05:00 - 07:00UTC is too rigid as for example DEP OMD/OMSJ/OMAA with optimum FL340/360 over ROTOX shall fly at FL280 for a long time via whole Bahrain FIR.

2. *“In trail restrictions from Doha and UAE, remember we get 10MIT from UAE and Doha, we blend the 2 streams and give 20MIT to Tehran.”*

No idea what is proposed and cannot comment as it is between the Gulf States but implementation might help.

3. *Reduced in trail to Tehran, perhaps reduced to 10MIT Reduction of radar separation could also help at Bahrain/Iran interface and this will not be the only area where later inside Tehran FIR the separation shall be expanded.*

Reduction of radar separation could also help at Bahrain/Iran interface and this will not be the only area where later inside Tehran FIR the separation shall be expanded.

4. *Additional parallel airway to Ankara FIR*

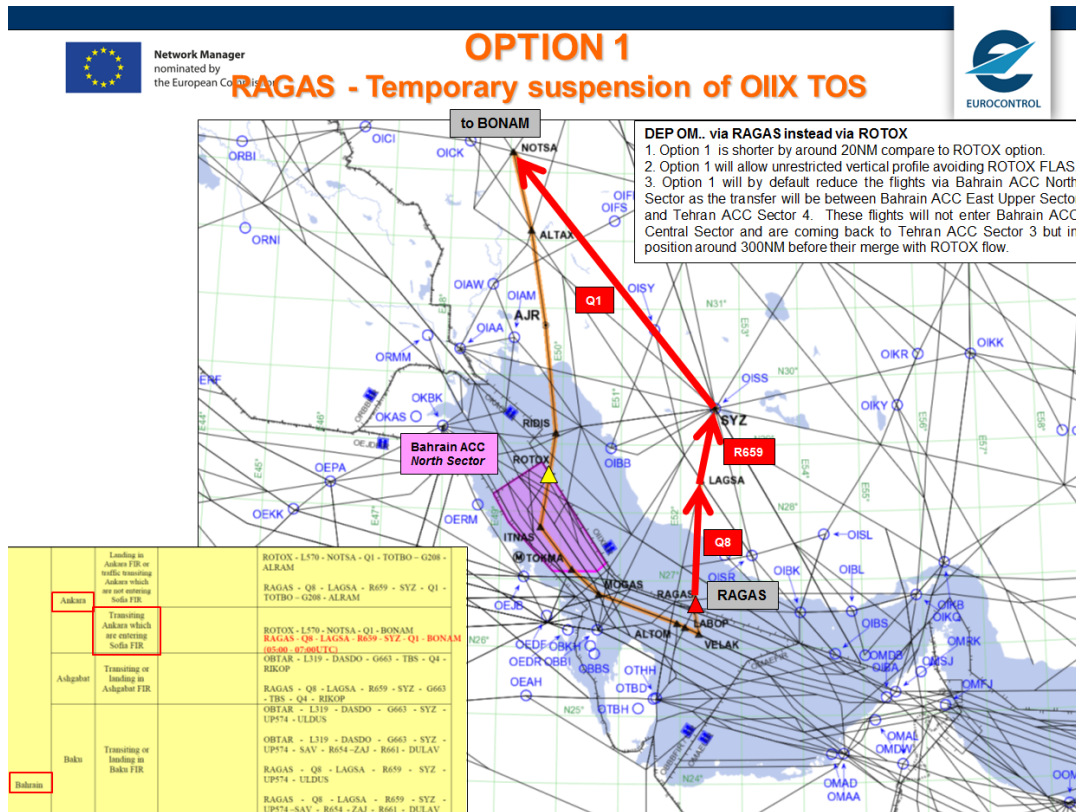
Commented above and is related to common agreement and resolution of other neighboring Turkish interfaces. Further possible reduction of radar separation between Ankara ACC and Tehran ACC is also connected to these developments.

Proposal by EUROCONTROL/NM:

Option 1

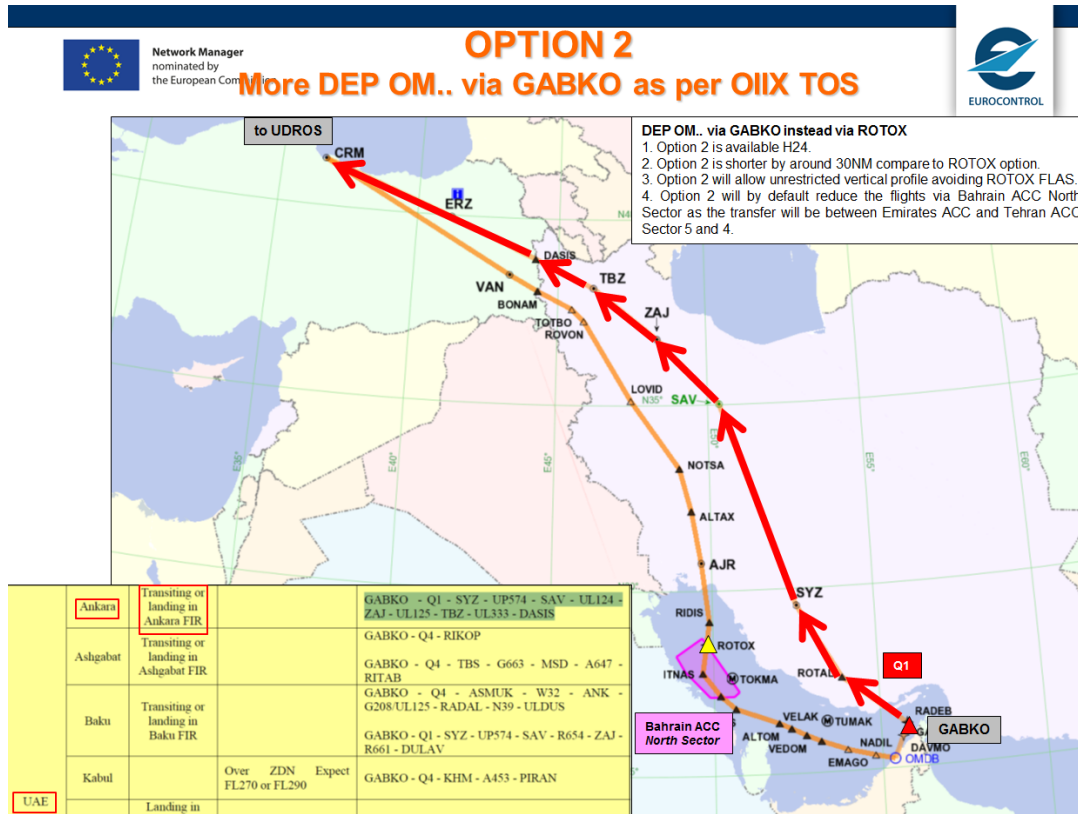
Considering existing situation and the latest “Route Scheme within OIIX” published by AIP SUP 105/16 slight change might also help. Example is current use of the sixth boundary point between Bahrain FIR and Tehran FIR - RAGAS. We do not have in our database full loading for RAGAS (only 24 flight/day) but it is I suppose not like over ROTOX and additional traffic could be accepted. RAGAS is allowed today on ATS route Q8 for landing in Ankara FIR or traffic transiting Ankara not entering Sofia FIR or transiting or landing in Ashgabat FIR or Baku FIR or Kabul FIR or Yerevan FIR and on ATS route Q7 for landing in Karachi FIR or transiting Karachi & inbound Delhi FIR & Mumbai FIR. Possible revision by Iran for use of ATS route Q8 between 05:00 - 07:00UTC will allow traffic from OTHH/OMDB/OMSJ toward BONAM to Sofia FIR via VELAK UT557 RAGAS Q8 LAGSA R659 SYZ Q1 NOTSA which is around 20NM shorter than today’s flown option VELAK UT602 ROTOX L570 NOTSA. This change will by default reduce the flights via Bahrain ACC North Sector as the transfer will be between Bahrain ACC East Upper Sector and Tehran ACC Sector 4. These flights will not enter Bahrain ACC

Central Sector and is coming back to Tehran ACC Sector 3 but in position around 300NM before their merge with ROTOX flow.



Option 2

Second possible solution is between UAE and Iran and might be allowance of more than today (around 30 flights) DEP OMD/OMSJ/OMAA via GABKO towards DASIS which is in accordance with Iranian Route Scheme. This option looks longer but is around 30NM shorter compare to ROTOX and will serve the AOs without FL penalization allowing optimum profiles. Again these flights will not enter Bahrain ACC and will reduce flights via ROTOX.



In conclusion studying deeply the whole interface, from operational point of view, other solutions might be found, if there is a wish for discussions. Proposals in regard to EUR/NAR Region are also reasonable but are the last solutions and possible absence of Turkey is not an obstacle for agreement between Bahrain, UAE and Iran.

- END -